



DANGER

Danger of electrical shock, burns or death. Always remove all power sources before attempting any repair, service or diagnostic work. Power can be present from shore power, generator, inverter or battery. All power sources must be disabled and secured before performing any service.

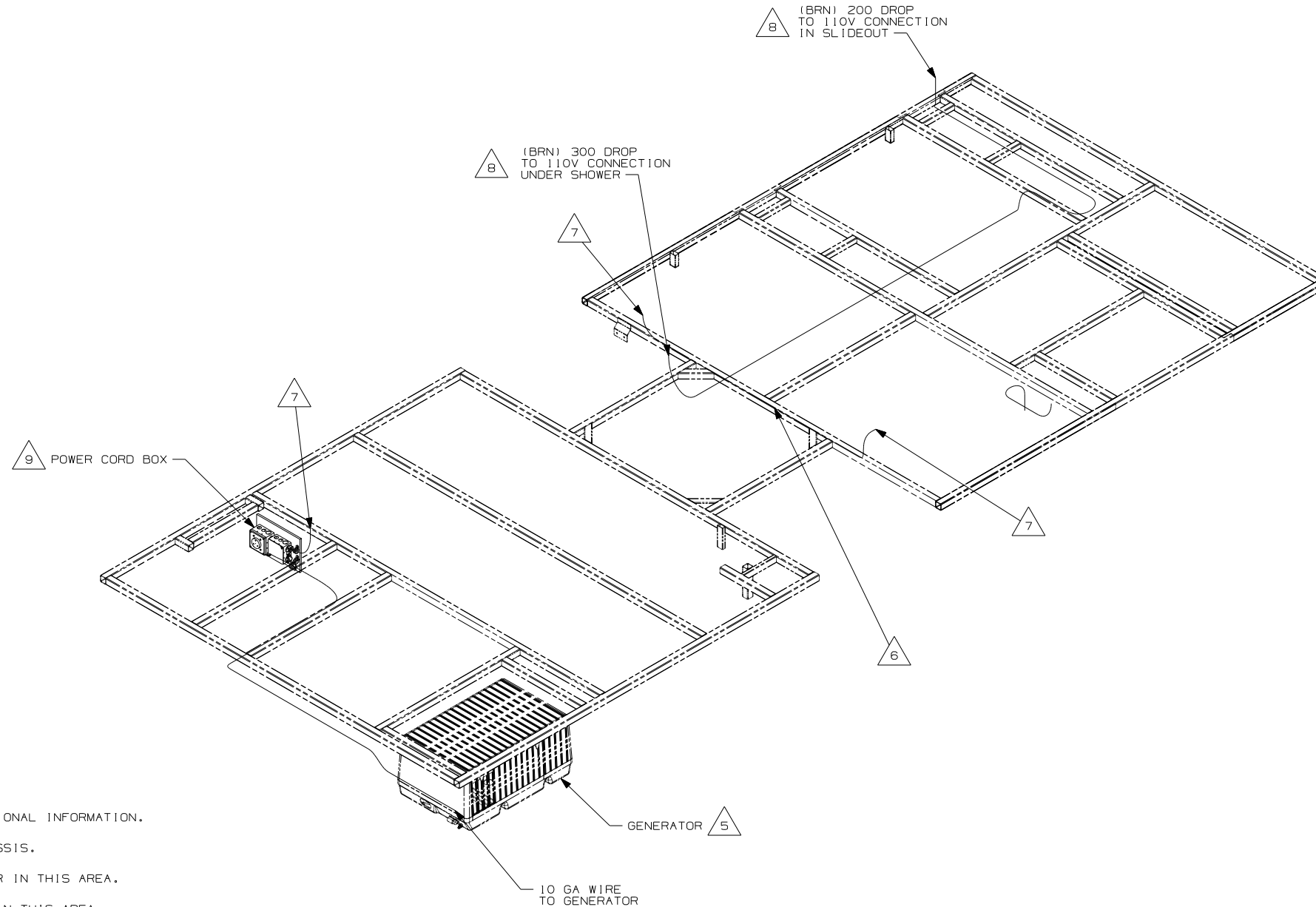


CAUTION

If you lack the skills, tools or equipment to perform diagnostic or repair work leave such work to an authorized Winnebago Industries dealer or other qualified shop.

DRAWING NO.	FEATURES
159876-11	1B1 12D
159876-15	265 12D

RELEASE	REV DATE A	DWG NO 159876
REV ZONE	REVISION RECORD	DATE DFR-ORIG



- 9 SEE LOAD CENTER/ATS ASM FOR ADDITIONAL INFORMATION.
 - 8 FLEX CORD IS PART OF WIRE ASM-CHASSIS.
 - 7 WIRE ASM-110V PASSES THROUGH FLOOR IN THIS AREA.
 - 6 WIRE ASM-110V ROUTED UNDER FLOOR IN THIS AREA.
 - 5 SEE GENERATOR INSTL FOR ADDITIONAL INFORMATION.
4. SEE WIRING DIAGRAM-BODY,110V FOR ADDITIONAL INFORMATION.
 3. ALL GROUND WIRE TO BE COVERED WITH TUBING 8041-02-000.
 2. ALL 110V WIRE TO BE CLAMPED WITH CLAMP 10497-05-000 WITHIN 200MM OF OUTLET BOXES, USE SCREW G67-10-12B.
 1. ALL WIRES TO BE SECURED WITH CLAMP 10495-01-000 OR CLIP 80734-01-000 EVERY 600MM. USE SCREW G67-10-12B UNLESS OTHERWISE SPECIFIED.

NOTES:

- 12D ELECTRICAL SYSTEM 30 AMP
- 265 CODES/STANDARDS-CSA/CMVSS
- 1B1 CODES/STANDARDS USA

1B1 265 12D

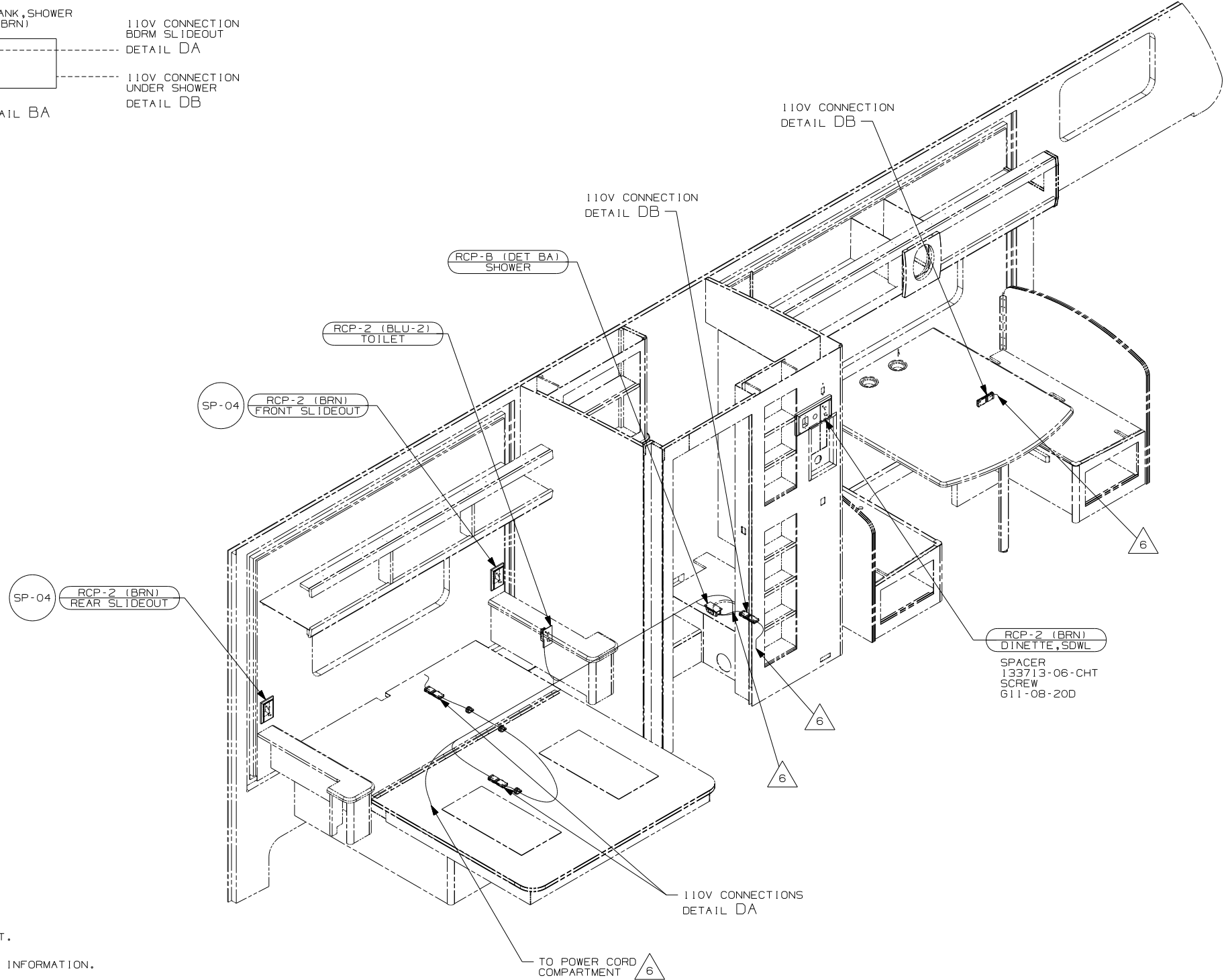
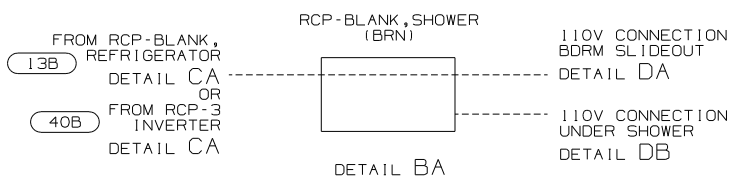


DFTR	ORIG. DATE
CHKR	ALL DIMENSIONS ARE IN MILLIMETERS
P.E.	
M.E.	FIRST USED
DSNR	07 327L
UNSPECIFIED TOLERANCES ARE:	MATERIAL:
HOLE DIM (X)	: 3
ONE-PLACE (X.X)	: 1.5
TWO-PLACE (X.XX)	: 0.50
ANGLE	: 1°
THIRD ANGLE PROJECTION	

FOR ELECTRICAL TORQUE SPECIFICATIONS SEE DWG NO. 128783-01-000

FOR ELECTRICAL CALLOUTS SEE DWG NO. 121339-01-000

DO NOT SCALE DRAWING		
TITLE:	WRING INSTL-BODY, 110V	
SHEET 1 of 4	PART NO	159876
REF:	1 7/13/2006	



- △ 6 WIRE ROUTED THROUGH FLOOR AT THIS POINT.
- △ 5 SEE LOAD CENTER/ATS ASM FOR ADDITIONAL INFORMATION.
4. SEE WIRING DIAGRAM-BODY, 110V FOR ADDITIONAL INFORMATION.
3. ALL GROUND WIRE TO BE COVERED WITH TUBING 8041-02-000.
2. ALL 110V WIRE TO BE CLAMPED WITH CLAMP 10497-05-000 WITHIN 200MM OF OUTLET BOXES, USE SCREW 667-10-12B.
1. ALL WIRES TO BE SECURED WITH CLAMP 10495-01-000 OR CLIP 80734-01-000 EVERY 600MM. USE SCREW 667-10-12B UNLESS OTHERWISE SPECIFIED.

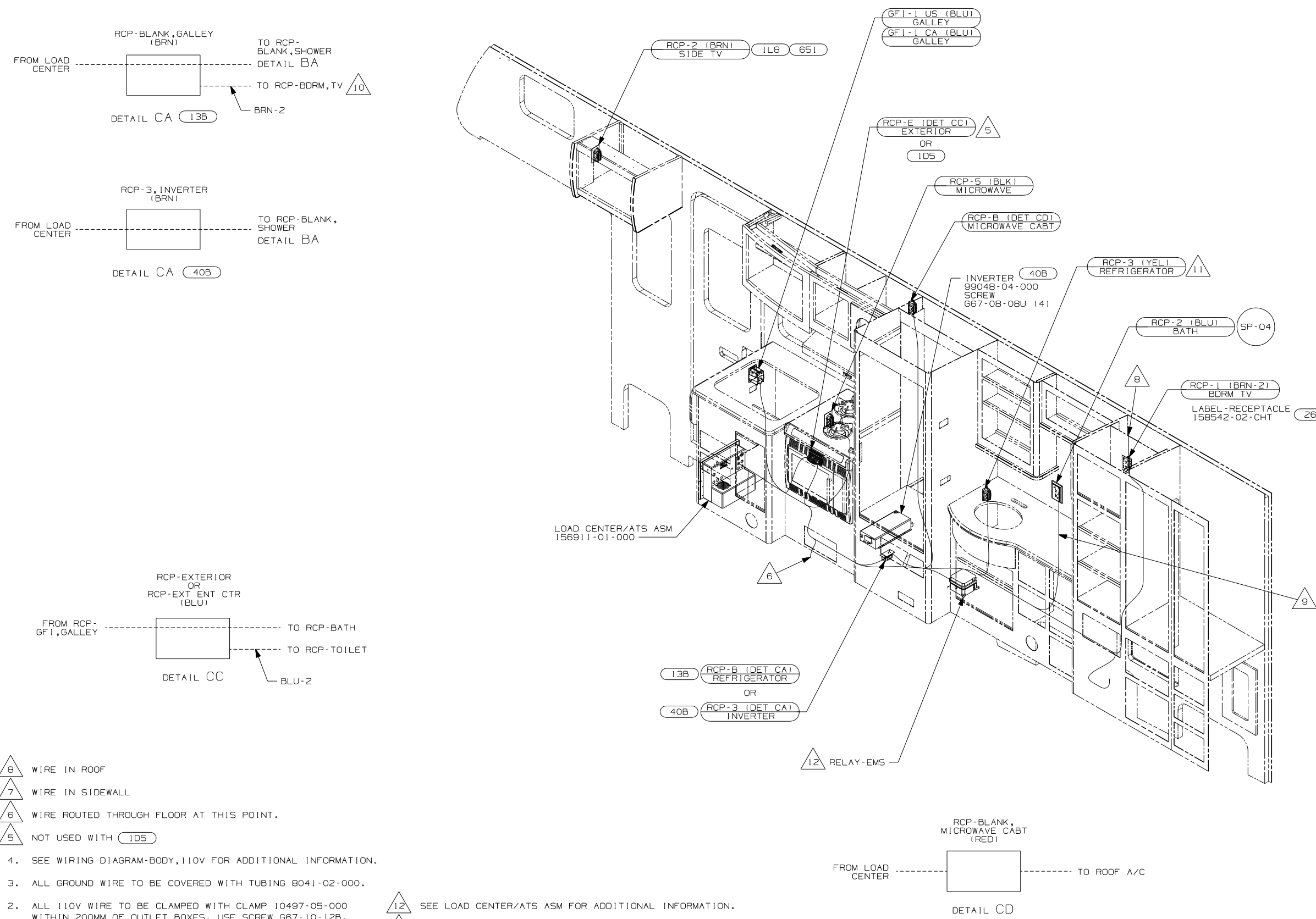
NOTES:

- 40B INVERTER-DC/AC, 300 WATT
- 13B INVERTER/CHARGER-DC/AC W/O
- 22B DINETTE - U-SHAPED
- 14W DINETTE
- 265 CODES/STANDARDS-CSA/CMVSS
- 1B1 CODES/STANDARDS USA

FIRST USED	07 327L	
DO NOT SCALE DRAWING		
TITLE:	WRING INSTL-BODY, 110V	
SHEET 2	PART NO	159876

FOR ELECTRICAL TORQUE SPECIFICATIONS SEE DWG NO. 128783-01-000

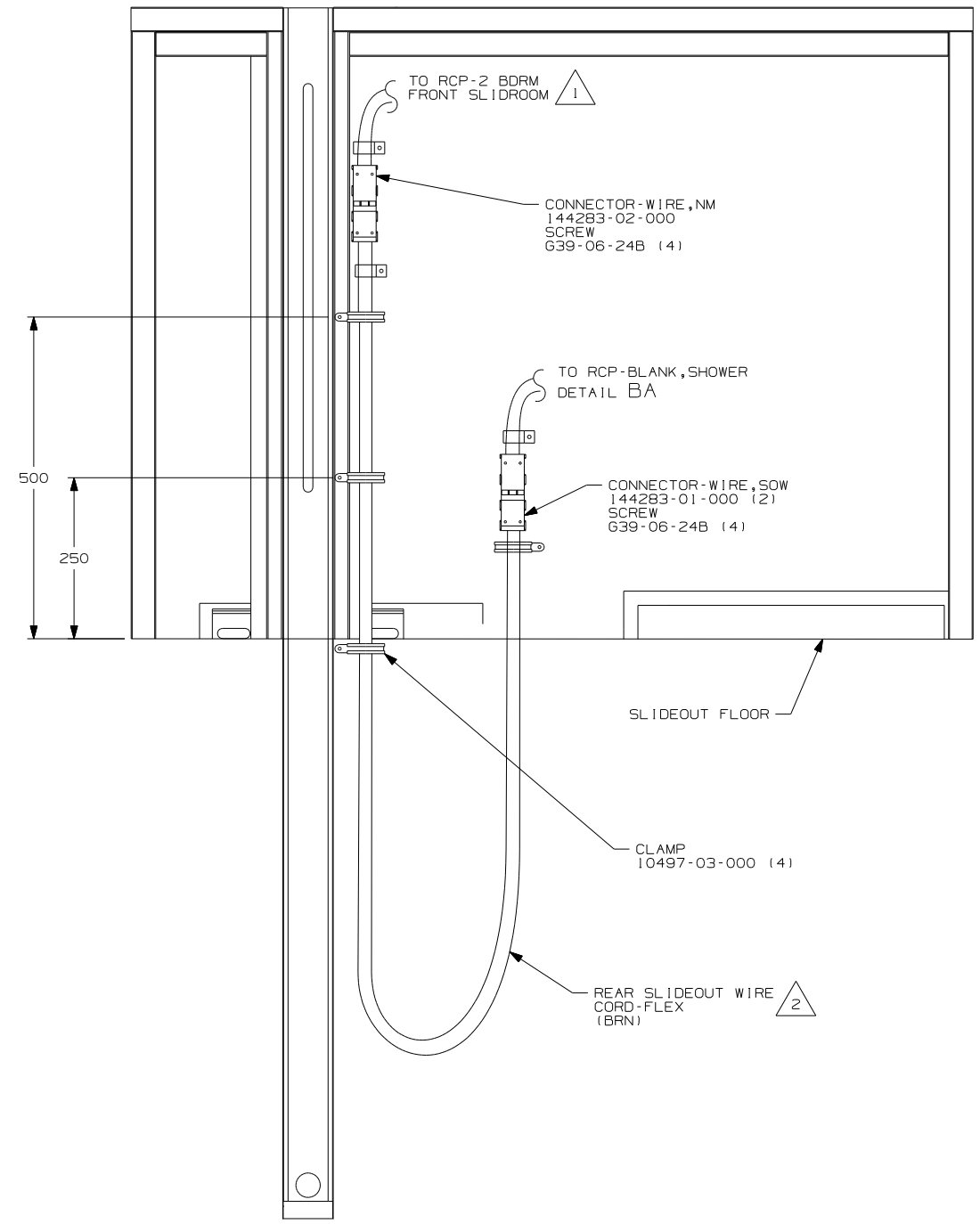
FOR ELECTRICAL CALLOUTS SEE DWG NO. 121339-01-000



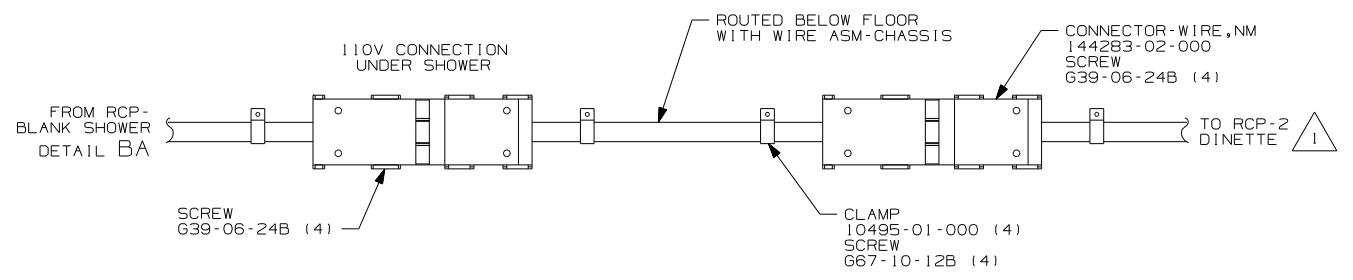
- △ 8 WIRE IN ROOF
 - △ 7 WIRE IN SIDEWALL
 - △ 6 WIRE ROUTED THROUGH FLOOR AT THIS POINT.
 - △ 5 NOT USED WITH (1D5)
4. SEE WIRING DIAGRAM-BODY, 110V FOR ADDITIONAL INFORMATION.
 3. ALL GROUND WIRE TO BE COVERED WITH TUBING 8041-02-000.
 2. ALL 110V WIRE TO BE CLAMPED WITH CLAMP 10497-05-000 WITHIN 200MM OF OUTLET BOXES, USE SCREW G67-10-12B.
 1. ALL WIRES TO BE SECURED WITH CLAMP 10495-01-000 OR CLIP 80734-01-000 EVERY 600MM. USE SCREW G67-10-12B UNLESS OTHERWISE SPECIFIED.

- △ 12 SEE LOAD CENTER/ATS ASM FOR ADDITIONAL INFORMATION.
- △ 11 LOCATE REFRIGERATOR RECEPTACLE ON TIEDOWN BRACKET.
- △ 10 WIRE CONNECTS TO INVERTER WITH (40B)
- △ 9 WIRE ROUTED THROUGH SIDEWALL.

- (651) BUNK FRONT OVERHEAD-SINGLE
- (40B) INVERTER-DC/AC, 300 WATT
- (13B) INVERTER/CHARGER-DC/AC W/O
- (1L8) TV-20"AC,LCD,STEREO/CD/DVD
- (1D5) ENTERTAINMENT CENTR/EXT W/CD
- (265) CODES/STANDARDS-CSA/CMVSS
- (1B1) CODES/STANDARDS USA



DETAIL DA



DETAIL DB

NOTES:
 2 SEE LOAD CENTER/ATS ASM FOR ADDITIONAL INFORMATION.
 1 WIRE IN SIDEWALL.

FOR ELECTRICAL TORQUE SPECIFICATIONS SEE DWG NO. 128783-01-000

FOR ELECTRICAL CALLOUTS SEE DWG NO. 121339-01-000

265 CODES/STANDARDS-CSA/CMVSS
 1B1 CODES/STANDARDS USA
 1B1 265

FIRST USED	07 327L
DO NOT SCALE DRAWING	
TITLE:	WRING INSTL-BODY, 110V
SHEET 4	PART NO 159876 REV