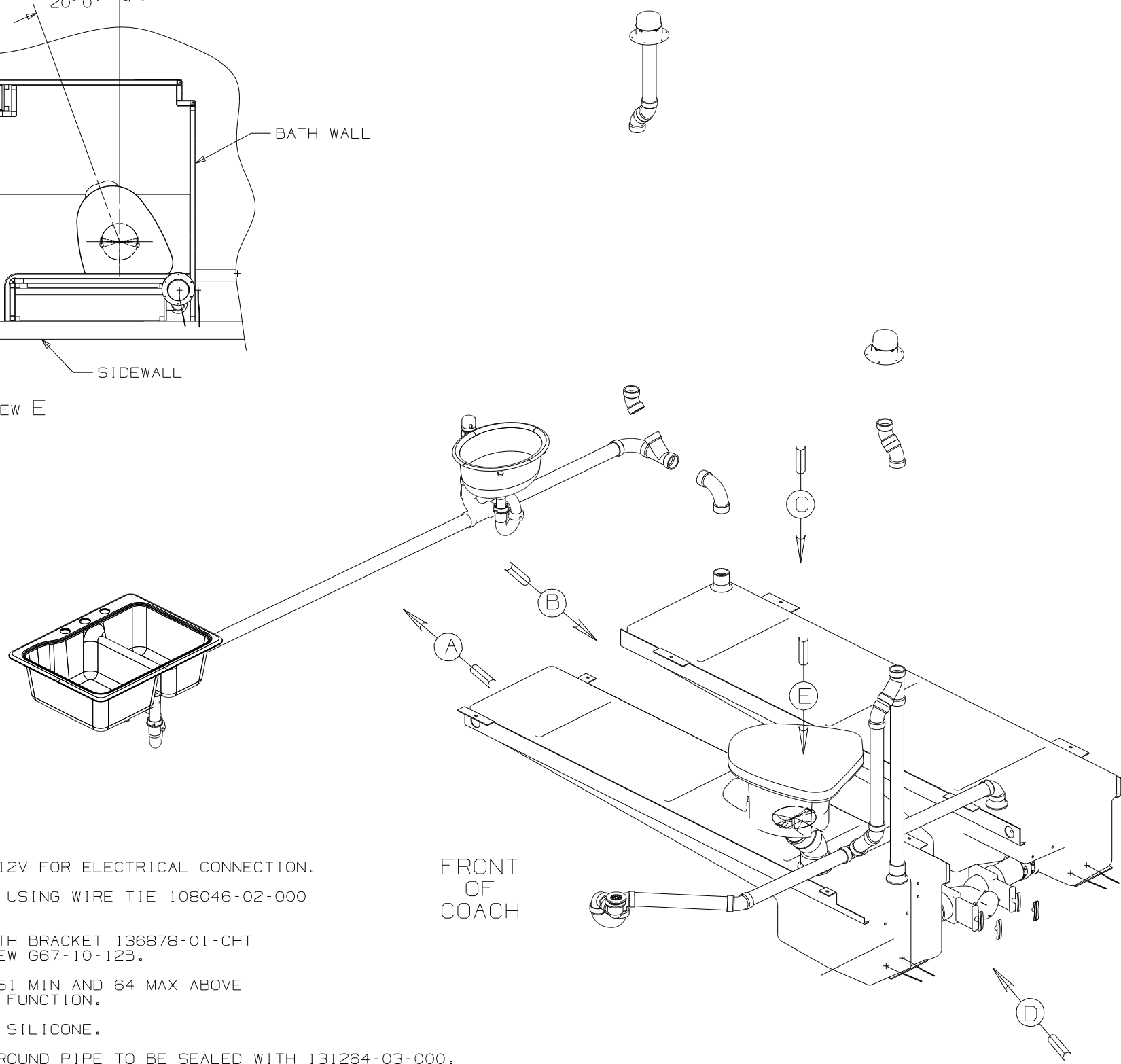


VIEW E



FRONT  
OF  
COACH

- 9 SEE WIRING INSTL-BODY, 12V FOR ELECTRICAL CONNECTION.
- 8 SECURE PIPES TO CABINET USING WIRE TIE 108046-02-000 AND SCREW G67-10-12B.
- 7 SECURE VENT TO FLOOR WITH BRACKET 136878-01-CHT CLAMP 62401-02-000, SCREW G67-10-12B.
- 6 VENT PIPE MUST PROJECT 51 MIN AND 64 MAX ABOVE ROOF FOR PROPER FIT AND FUNCTION.
- 5. SEAL AROUND SHOWER WITH SILICONE.
- 4. ALL EXTERIOR OPENINGS AROUND PIPE TO BE SEALED WITH 131264-03-000.
- 3. ALL PIPE AND FITTINGS TO BE ASSEMBLED WITH SOLVENT 4020-01-000.
- 2. SLOPE OF TRAP ARM MUST BE 6 PER 305 mm.
- 1. SLOPE OF HORIZONTAL PIPING TO BE MIN 3 PER 305 mm.

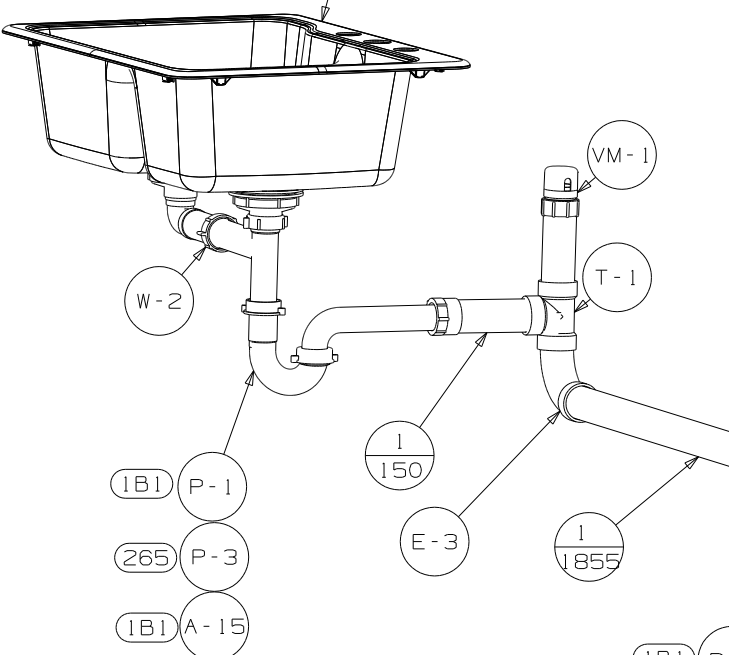
NOTES:

- (23T) DRAINAGE SYSTEM-HEATED
- (1JD) DRAINAGE SYSTEM-HEATED W/O
- (644) GREAT ALASKAN RENTAL PACKAGE

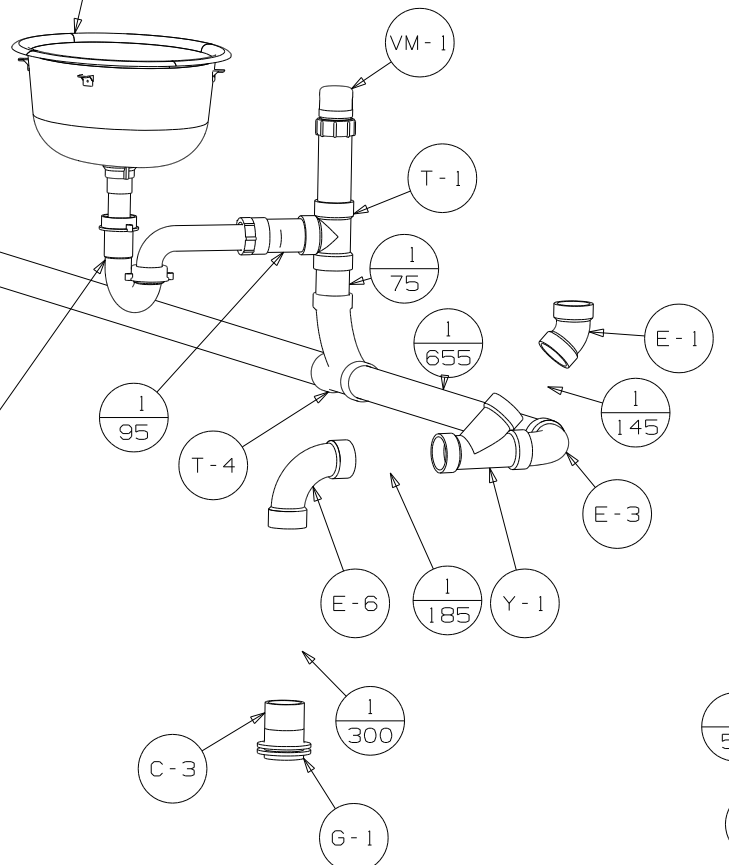
(X-X)  
FOR  
DRAINAGE  
CALLOUTS  
SEE DWG NO  
116229-01-000

<b>WINNEBAGO</b>		COPYRIGHT 2006 WINNEBAGO INDUSTRIES, INC.	
DFTR	ORIG. DATE	ALL DIMENSIONS ARE IN MILLIMETERS	
CHKR		FIRST USED	
P.E.		07 327L	
M.E.		UNSPECIFIED TOLERANCES ARE:	
DSNR		MATERIAL:	
		WHOLE DIM (X)	: 3
		ONE-PLACE (X.X)	:
		TWO-PLACE (X.XX)	:
		ANGLE	:
THIRD ANGLE PROJECTION		DO NOT SCALE DRAWING	
		TITLE: DRAINAGE SYSTEM INSTL	
SHEET 1 OF 3	PART NO	REV	
	159575		

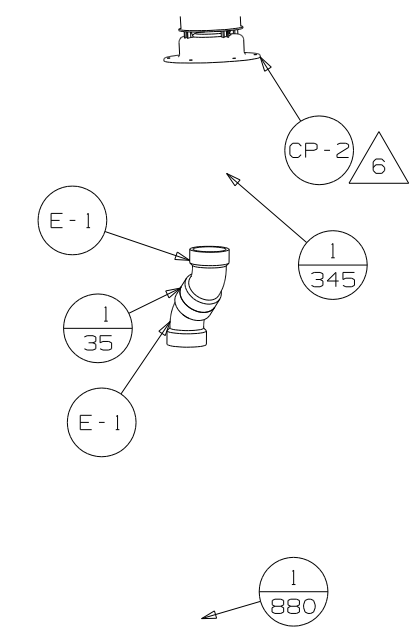
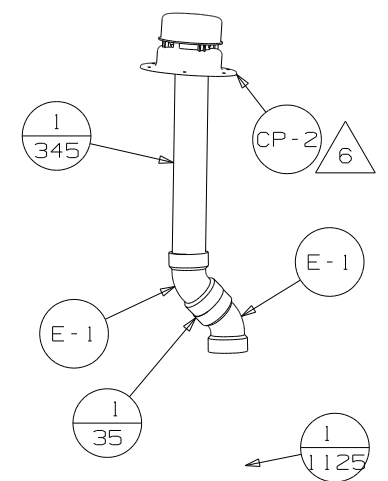
SINK-DBL L/S BASIN  
 148870-01-CHT  
 STRAINER  
 92203-01-000 (2)  
 BRACKET  
 140002-01-CHT (8)  
 SCREW  
 G67-10-08B (8)  
 SEAL  
 (A/R)



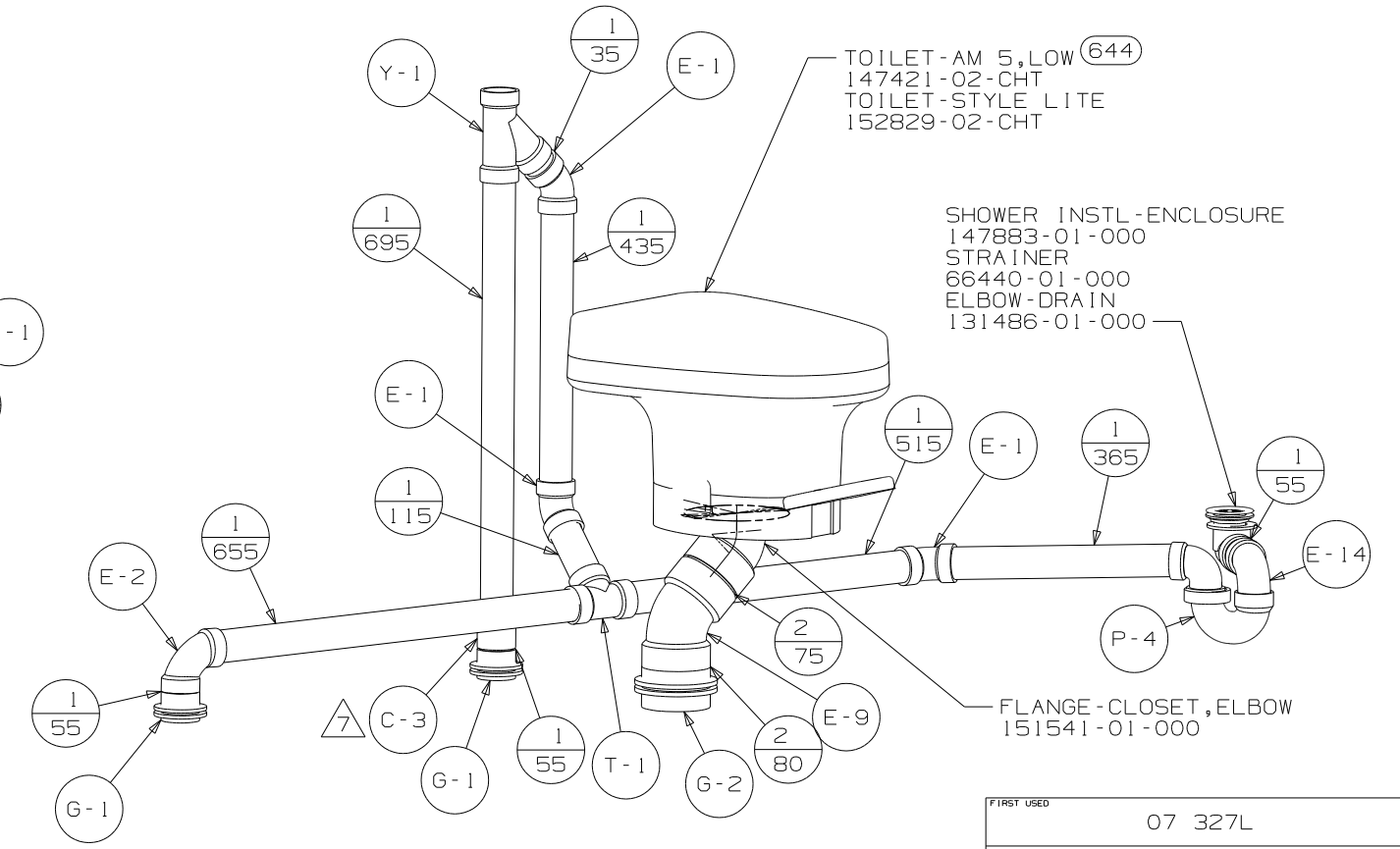
SINK-LAVATORY  
 156661-01-CHT  
 SEAL  
 91255-02-000  
 STRAINER ASM-PLASTIC  
 106116-01-CHT  
 106116-02-CHT



VIEW A



TOILET-AM 5,LOW (644)  
 147421-02-CHT  
 TOILET-STYLE LITE  
 152829-02-CHT

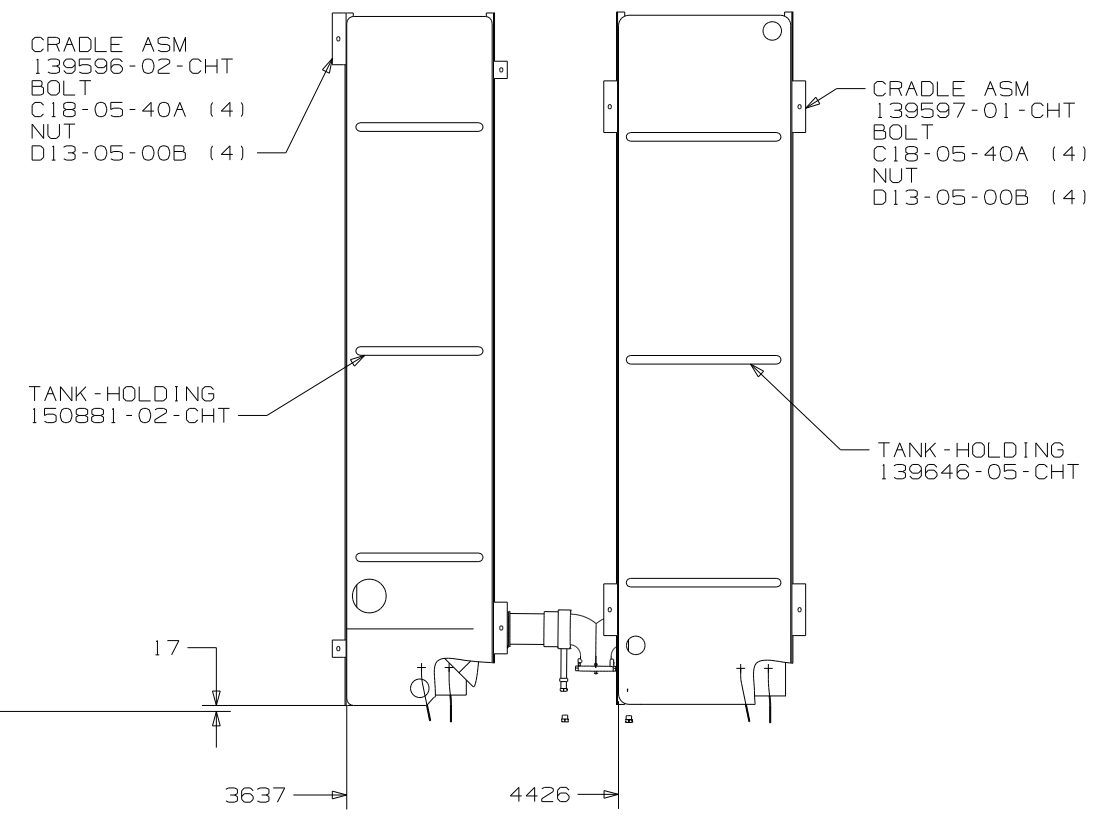
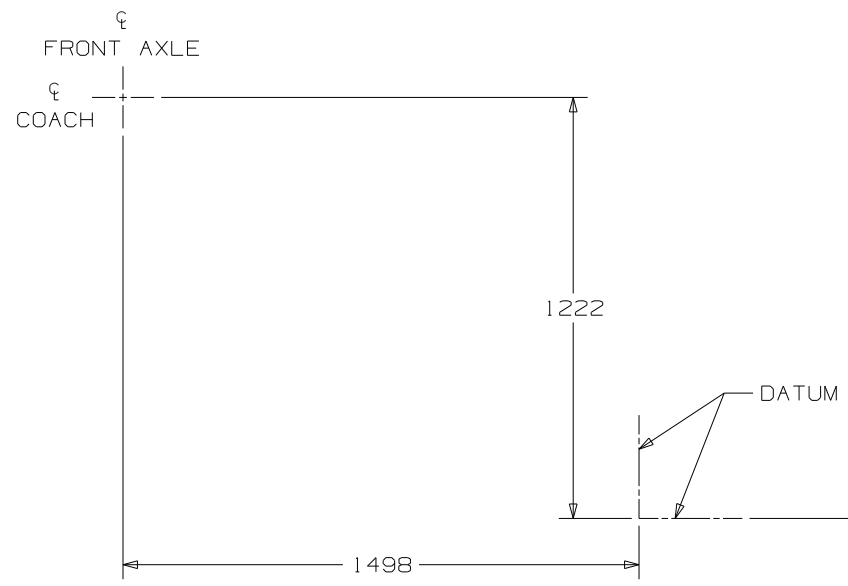


SHOWER INSTL-ENCLOSURE  
 147883-01-000  
 STRAINER  
 66440-01-000  
 ELBOW-DRAIN  
 131486-01-000

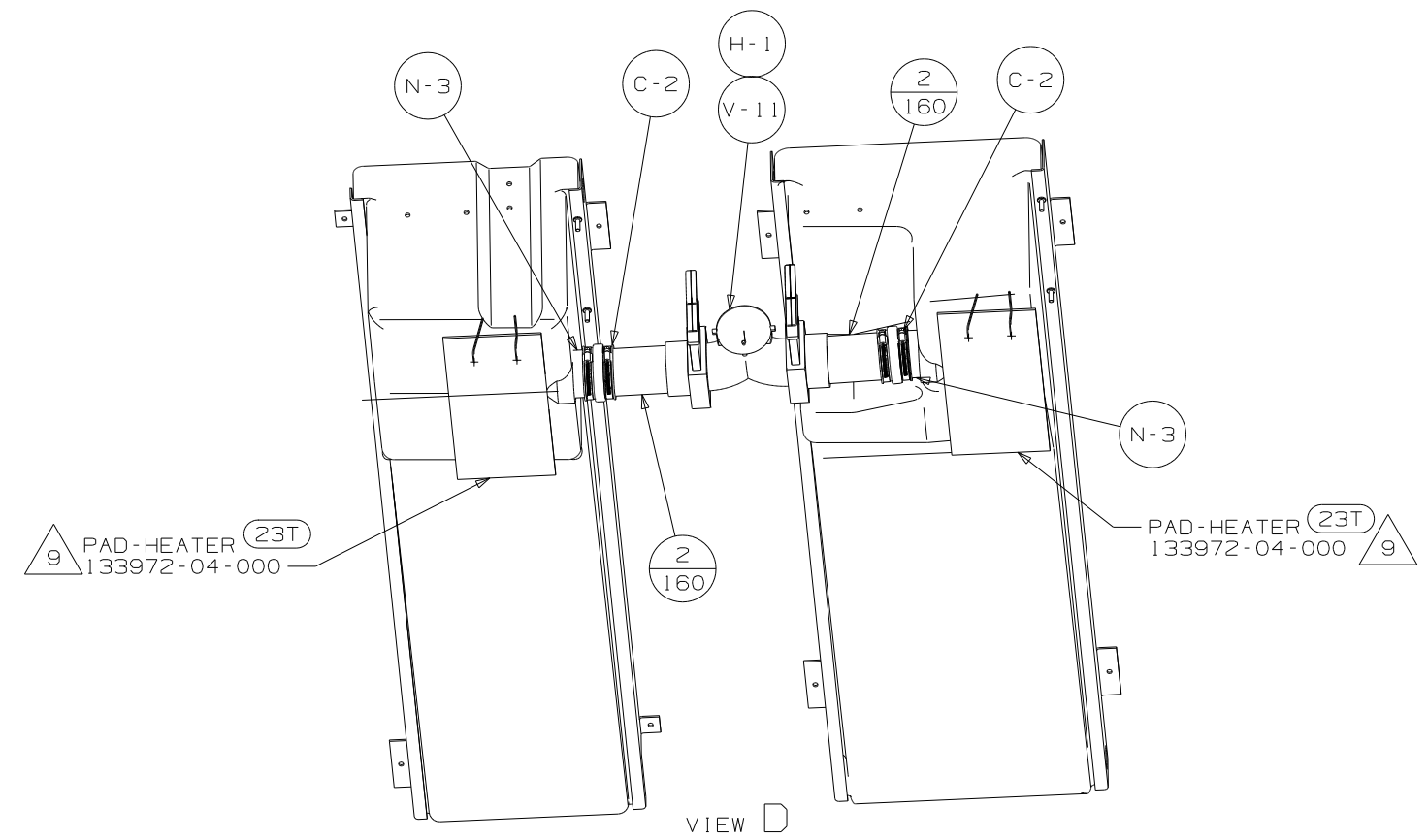
FLANGE-CLOSET,ELBOW  
 151541-01-000

VIEW B

FIRST USED	07 327L		
TITLE	DO NOT SCALE DRAWING		
	DRAINAGE SYSTEM INSTL		
SHEET 2	PART NO	159575	REV



VIEW C



VIEW D

FIRST USED	07 327L	
TITLE	DO NOT SCALE DRAWING DRAINAGE SYSTEM INSTL	
SHEET 3	PART NO	159575
	REV	

8

7

6

5

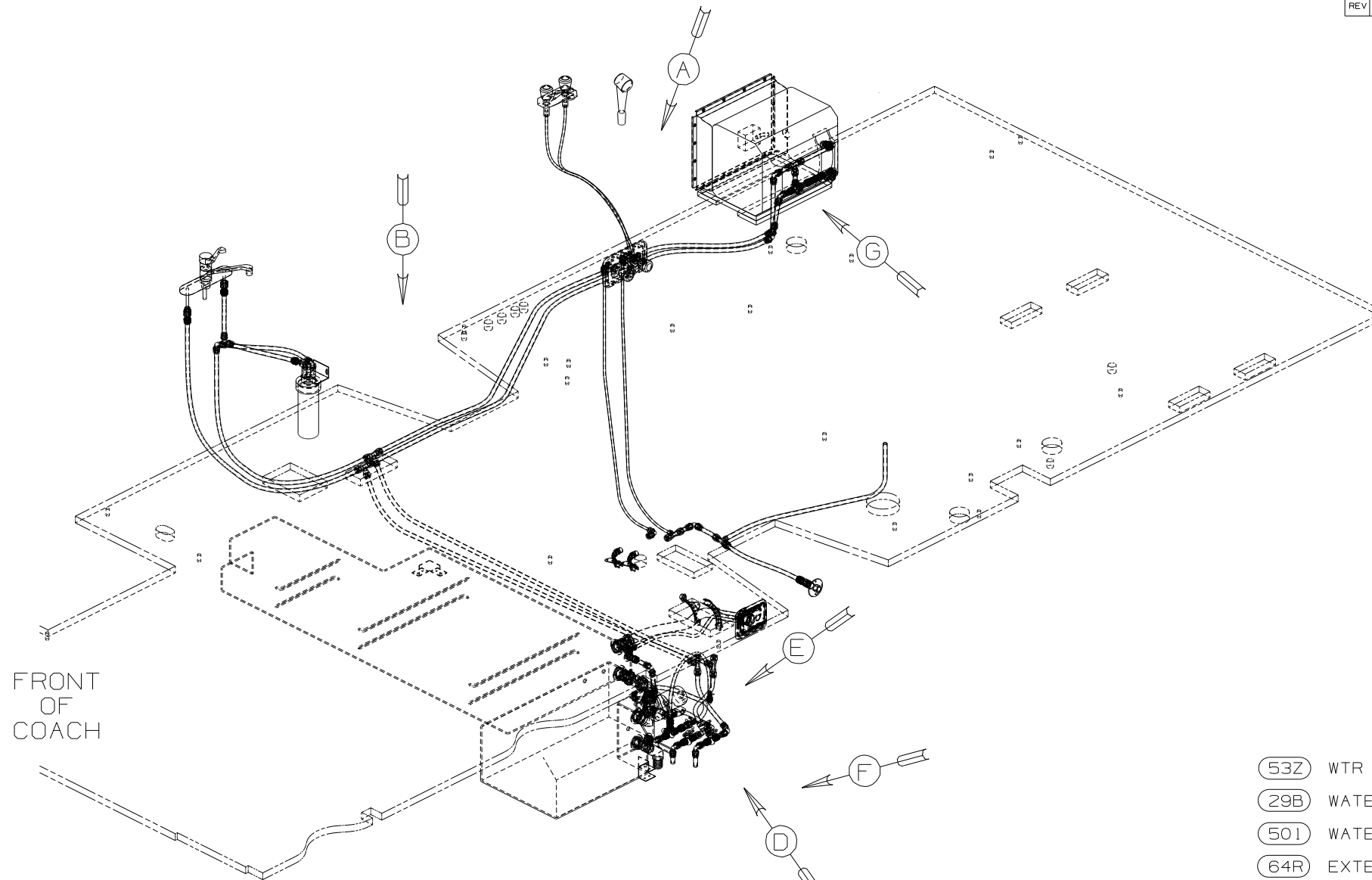
4

3

2

1

RELEASE	REV DATE	DWG NO
A		159580
REV ZONE	REVISION RECORD	DATE DFR-ORIG



FRONT OF COACH

- (53Z) WTR HTR-6GAL/110/LP/MTR/AUTO
- (29B) WATER PURIFIER
- (50I) WATER PURIFIER WITHOUT
- (64R) EXTERIOR WASH STATION
- (1J4) EXT WASH STATION-WITHOUT
- (53E) WATER SYS WINTERIZATION PKG
- (53F) WATER HEATER-ELEC IGNITION
- (086) INTERIOR UPGRADE

- △10 LABEL HOT AND COLD SUPPLY TUBES.
  - △9 TAPE FITTING TO TUBE BEFORE CABINET SET TO PREVENT FITTING FROM MOVING.
  - △8 ATTACH WASHER-PLASTIC 87080-13-CHT WITH TAPE-DOUBLE 123816-03-000 ON BOTTOM SIDE OF LOWER FLOOR.
  - △7 ATTACH WASHER-PLASTIC 87080-13-CHT WITH TAPE-DOUBLE 123816-03-000 ON BOTTOM SIDE OF COMPARTMENT.
  - △6 ADD TEFLON TAPE 10405-03-000.
  - △5 ADD TEFLON TAPE 10405-02-000.
  - △4 ADD TEFLON TAPE 10405-01-000.
3. ALL TUBING TO BE SECURED AT 1200 INTERVALS MAXIMUM WITH CLAMP 10495-01-000 AND SCREW G67-10-12B OR EQUIVALENT.
  2. TUBING TO BE INSTALLED WITH SUFFICIENT SLOPE TO PROVIDE DRAINAGE TO NEAREST VALVE.
  1. PLASTIC FITTINGS TO BE SEALED WITH SEALANT 84456-01-000.

NOTES:

(X-X)  
FOR WATER CALLOUTS SEE DWG NO 116230-01-000

<b>WINNEBAGO</b>		COPYRIGHT 2007 WINNEBAGO INDUSTRIES, INC.	
DFTR	ORIG. DATE	ALL DIMENSIONS ARE IN MILLIMETERS	
CHKR		FIRST USED	
P.E.		07 327L	
M.E.		UNSPECIFIED TOLERANCES ARE:	
DSNR		MATERIAL:	
		WHOLE DIM (X) :	7
		ONE-PLACE (X.X) :	
		TWO-PLACE (X.XX) :	
		ANGLE :	
THIRD ANGLE PROJECTION		DO NOT SCALE DRAWING	
TITLE: WATER SYSTEM INSTL			
SHEET 1 OF 4	PART NO	REV	
	159580		
REF:	1 3/2/2007		

8

7

6

5

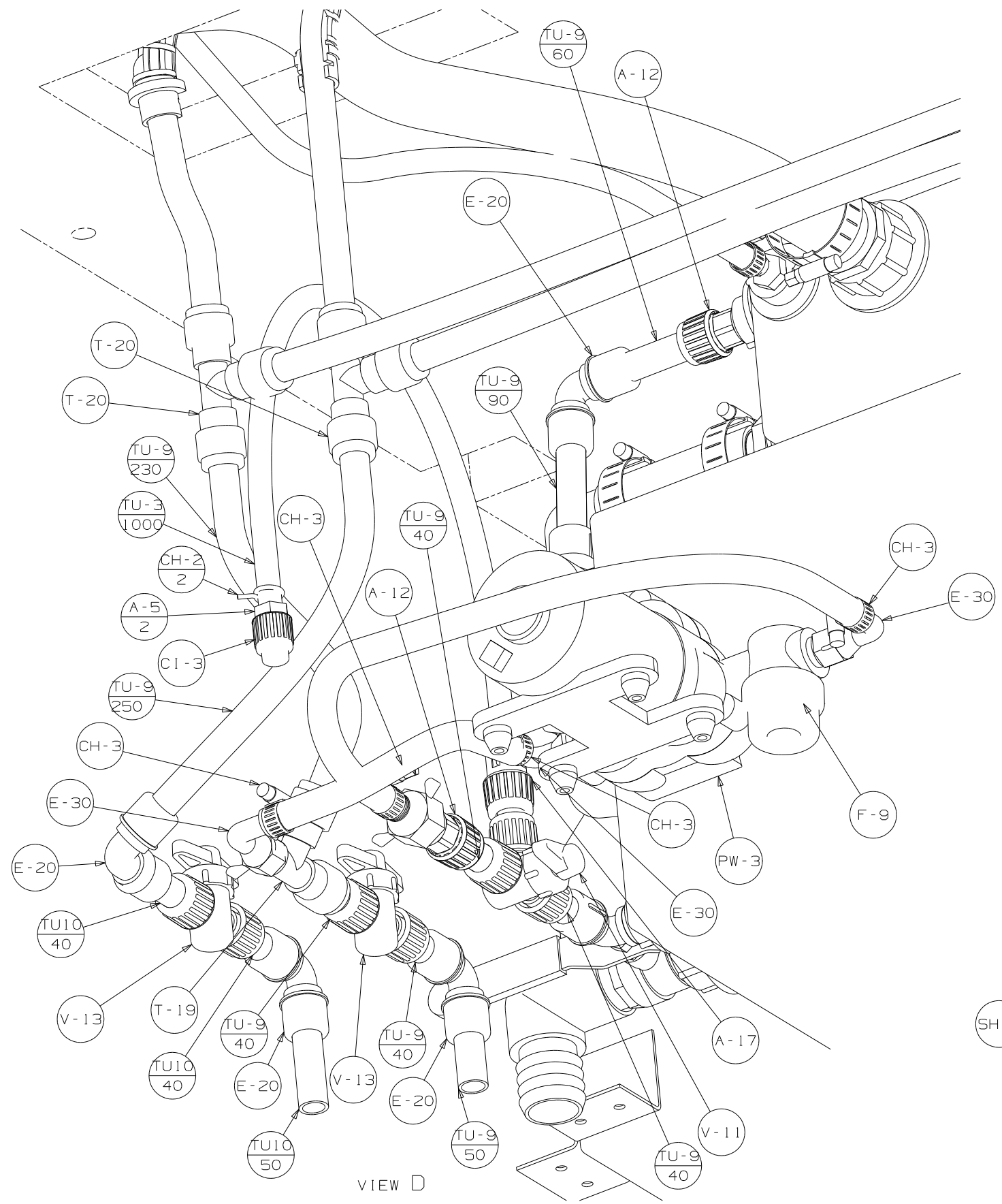
4

3

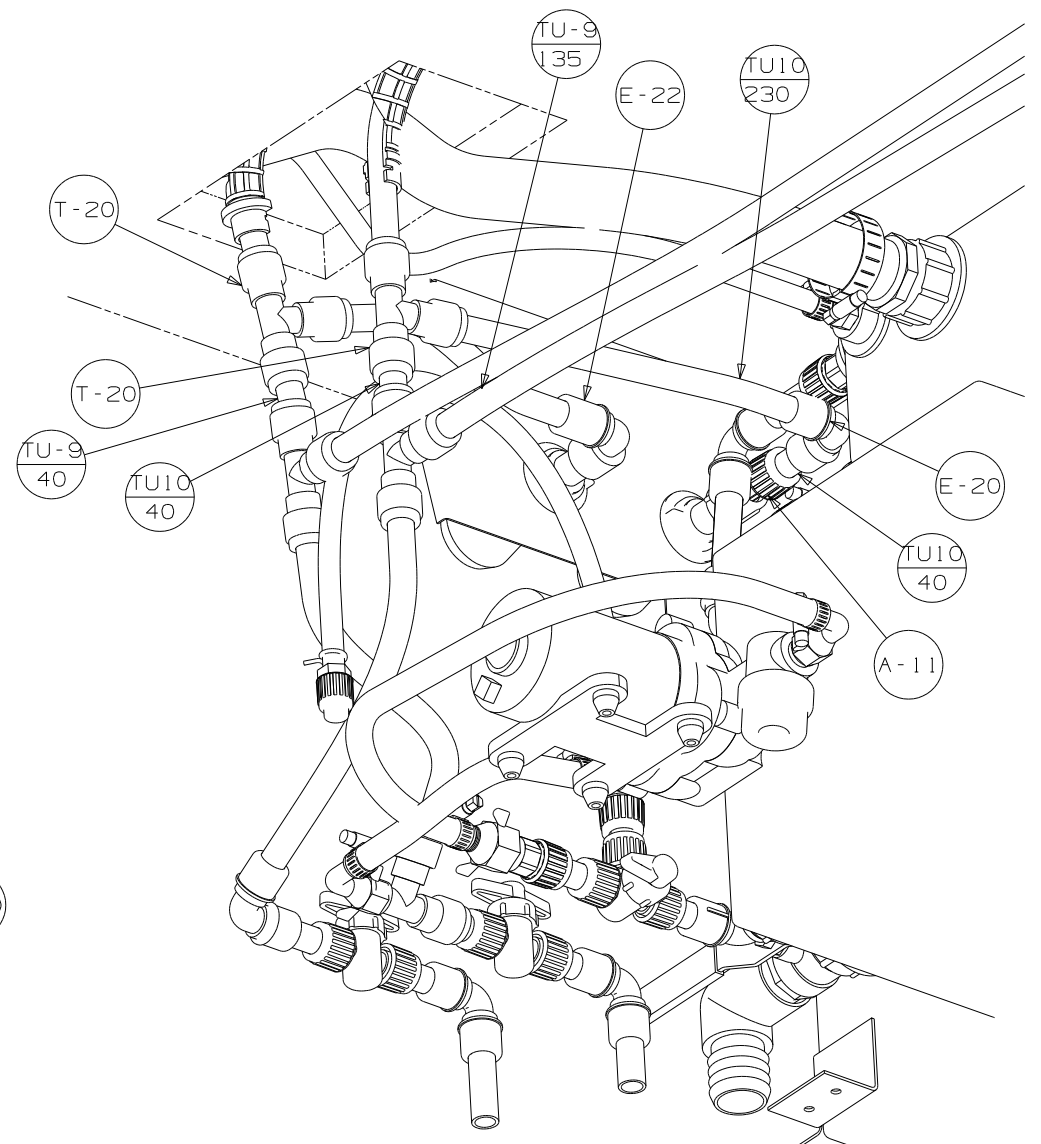
2

1

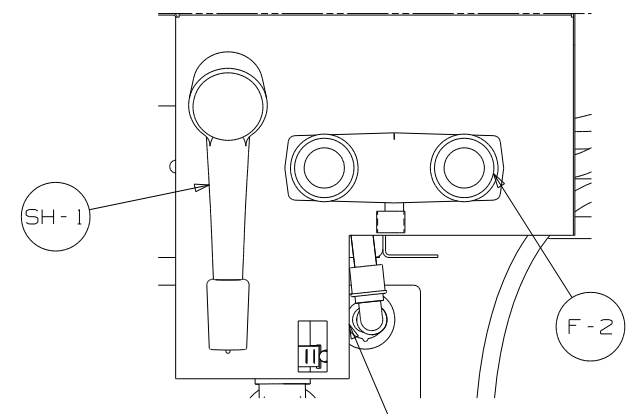




VIEW D



VIEW D  
64R



VIEW E  
BRACKET-SUPPORT, FAUCET  
114416-03-CHT

FIRST USED	07 327L
DO NOT SCALE DRAWING	
TITLE	WATER SYSTEM INSTL
SHEET 3	PART NO 159580 REV

