



DANGER

Danger of electrical shock, burns or death. Always remove all power sources before attempting any repair, service or diagnostic work. Power can be present from shore power, generator, inverter or battery. All power sources must be disabled and secured before performing any service.

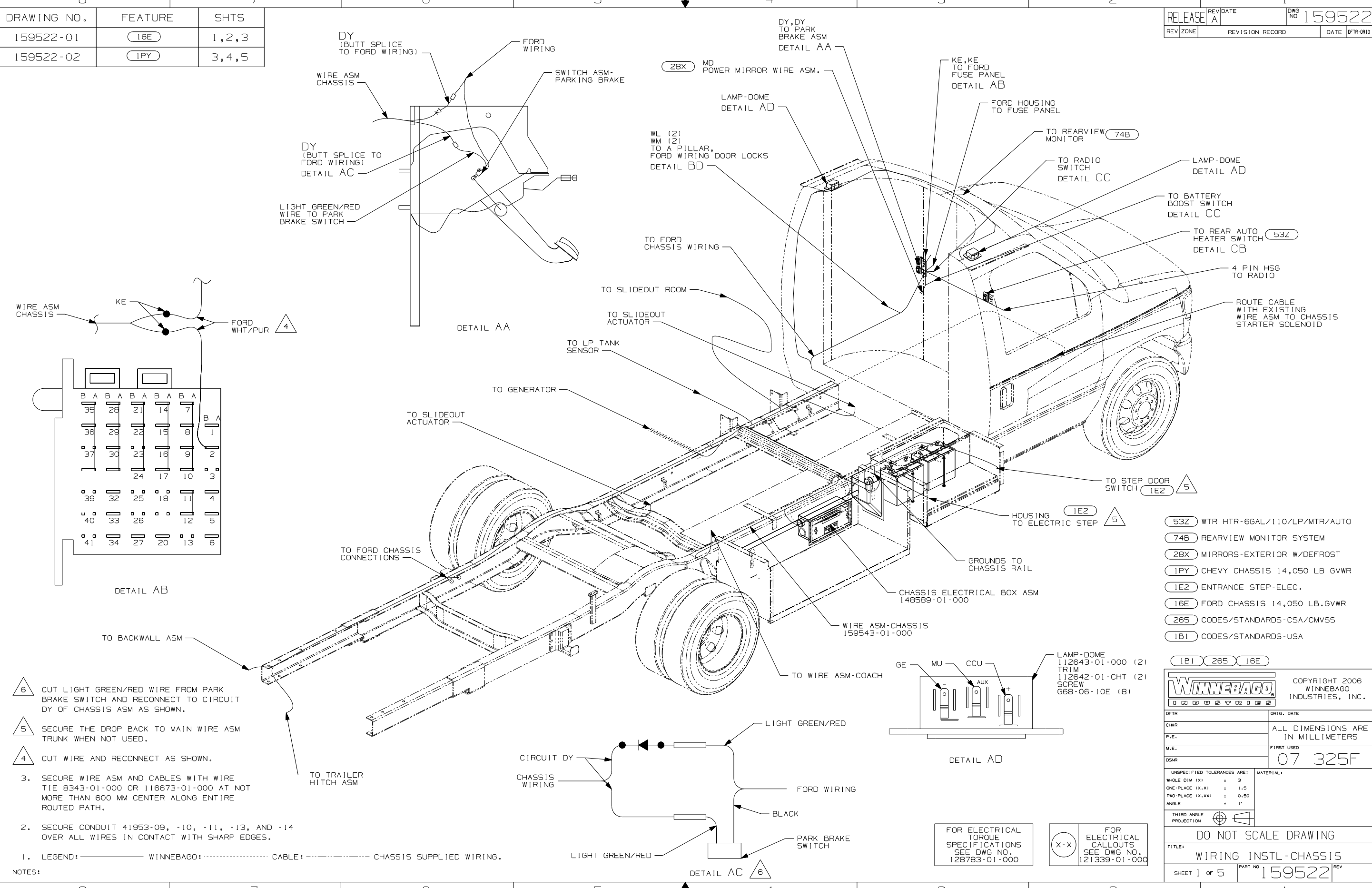


CAUTION

If you lack the skills, tools or equipment to perform diagnostic or repair work leave such work to an authorized Winnebago Industries dealer or other qualified shop.

DRAWING NO.	FEATURE	SHTS
159522-01	16E	1,2,3
159522-02	1PY	3,4,5

RELEASE	REV/DATE	DWG NO
	A	159522
REV ZONE	REVISION RECORD	DATE
		DTR-016



- 53Z WTR HTR-6GAL/110/LP/MTR/AUTO
- 74B REARVIEW MONITOR SYSTEM
- 28X MIRRORS-EXTERIOR W/DEFROST
- 1PY CHEVY CHASSIS 14,050 LB GVWR
- 1E2 ENTRANCE STEP-ELEC.
- 16E FORD CHASSIS 14,050 LB.GVWR
- 265 CODES/STANDARDS-CSA/CMVSS
- 1B1 CODES/STANDARDS-USA

WINNEBAGO COPYRIGHT 2006 WINNEBAGO INDUSTRIES, INC.

DWTR: _____ ORIG. DATE: _____

CHKR: _____ ALL DIMENSIONS ARE IN MILLIMETERS

P.E.: _____

M.E.: _____ FIRST USED: 07 325F

DSNR: _____

UNSPECIFIED TOLERANCES ARE: MATERIAL:

WHOLE DIM (X)	: 3
ONE-PLACE (X.X)	: 1.5
TWO-PLACE (X.XX)	: 0.50
ANGLE	: 1°

THIRD ANGLE PROJECTION

DO NOT SCALE DRAWING

TITLE: **WIRING INSTL-CHASSIS**

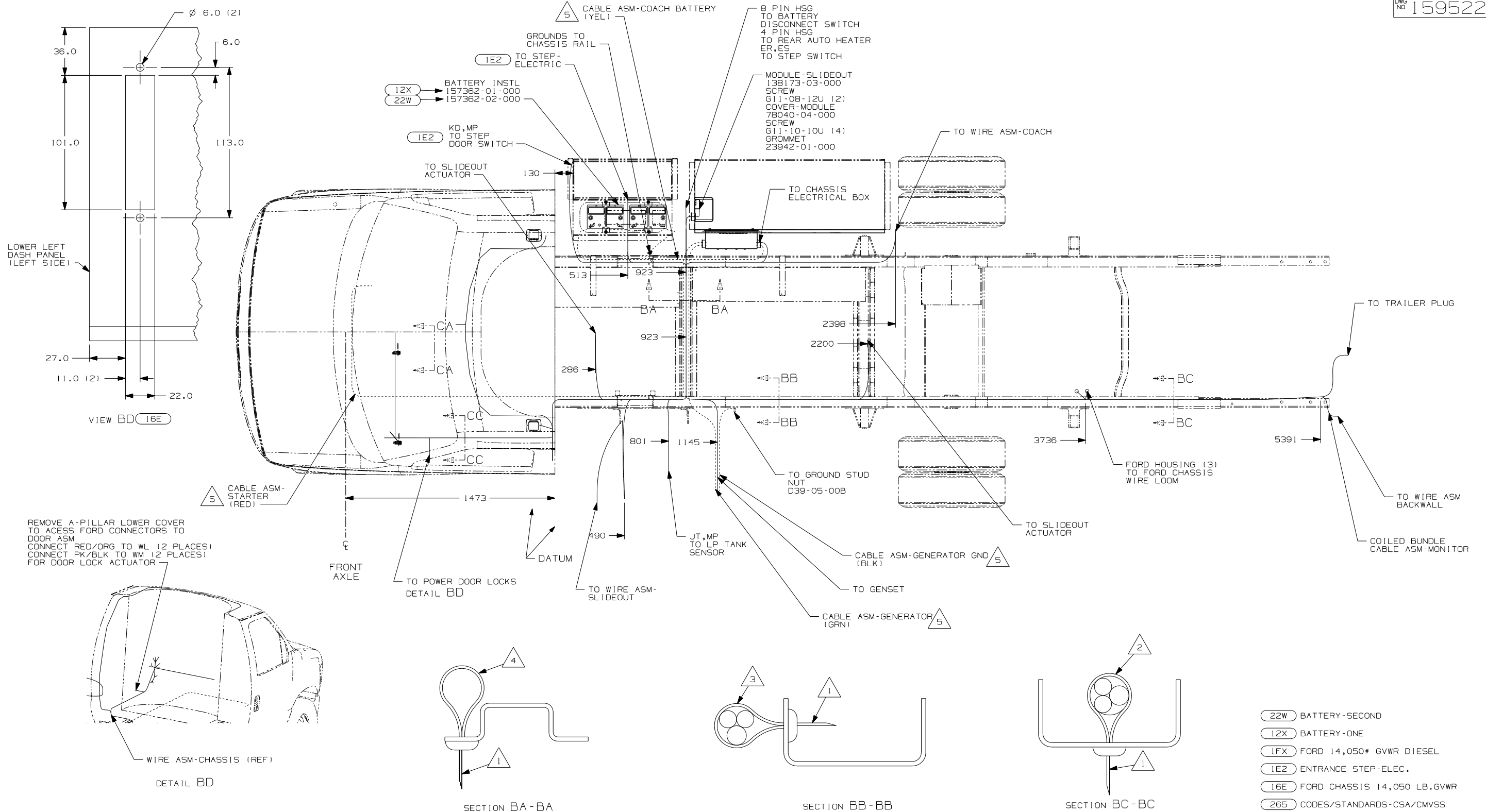
SHEET 1 of 5 PART NO. **159522** REV

REF: **1 8/9/2006**

- 6 CUT LIGHT GREEN/RED WIRE FROM PARK BRAKE SWITCH AND RECONNECT TO CIRCUIT DY OF CHASSIS ASM AS SHOWN.
- 5 SECURE THE DROP BACK TO MAIN WIRE ASM TRUNK WHEN NOT USED.
- 4 CUT WIRE AND RECONNECT AS SHOWN.
3. SECURE WIRE ASM AND CABLES WITH WIRE TIE 8343-01-000 OR 116673-01-000 AT NOT MORE THAN 600 MM CENTER ALONG ENTIRE ROUTED PATH.
2. SECURE CONDUIT 41953-09, -10, -11, -13, AND -14 OVER ALL WIRES IN CONTACT WITH SHARP EDGES.
1. LEGEND: _____ WINNEBAGO: CABLE: ----- CHASSIS SUPPLIED WIRING.
- NOTES:

FOR ELECTRICAL TORQUE SPECIFICATIONS SEE DWG NO. 128783-01-000

(X-X) FOR ELECTRICAL CALLOUTS SEE DWG NO. 121339-01-000



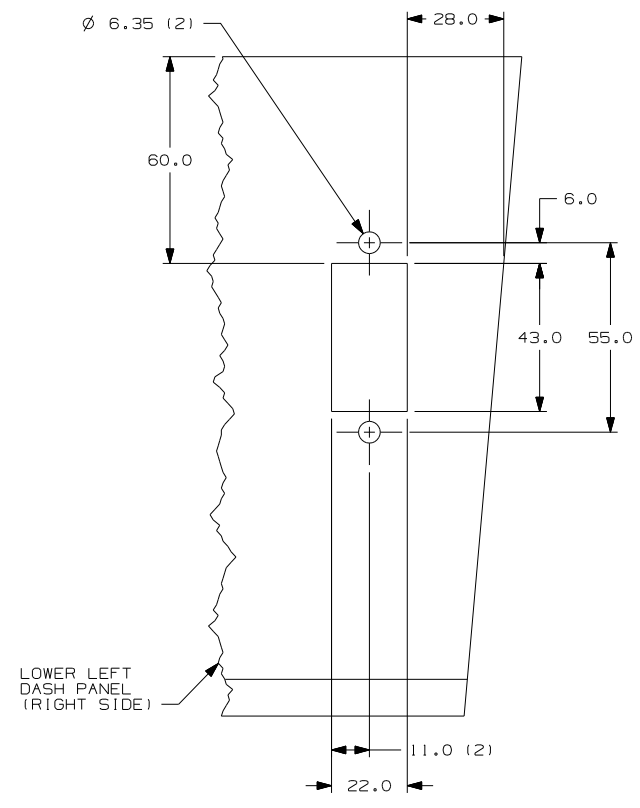
- NOTES:
- 5 SEE BATTERY INSTALLATION FOR ADDITIONAL INFORMATION.
 - 4 WIRES TO BE TIED TO CROSS MEMBER USING EXISTING HOLES.
 - 3 WIRES TO BE TIED TO TOP OF RAIL USING EXISTING HOLES.
 - 2 WIRES TO BE TIED TO INSIDE OF RAIL USING EXISTING HOLES.
 - 1 CUT OFF EXCESS END OF WIRE TIE.

- 22W BATTERY-SECOND
- 12X BATTERY-ONE
- 1FX FORD 14,050# GVWR DIESEL
- 1E2 ENTRANCE STEP-ELEC.
- 16E FORD CHASSIS 14,050 LB.GVWR
- 265 CODES/STANDARDS-CSA/CMVSS
- 1B1 CODES/STANDARDS-USA

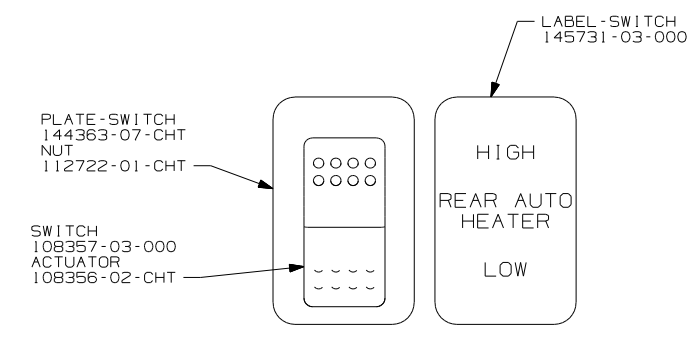
FOR ELECTRICAL TORQUE SPECIFICATIONS SEE DWG NO. 128783-01-000

FOR ELECTRICAL CALLOUTS SEE DWG NO. 121339-01-000

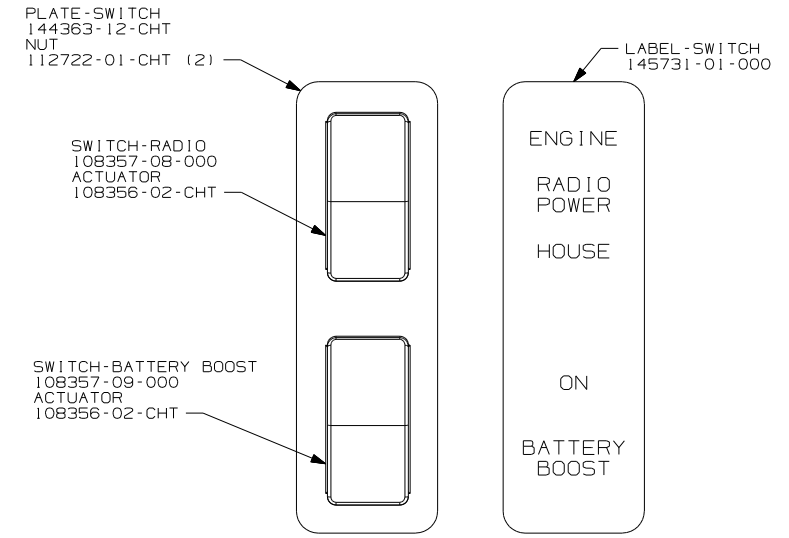
FIRST USED	07 325F
TITLE	DO NOT SCALE DRAWING
TITLE	WIRING INSTL-CHASSIS
SHEET 2	PART NO 159522 REV



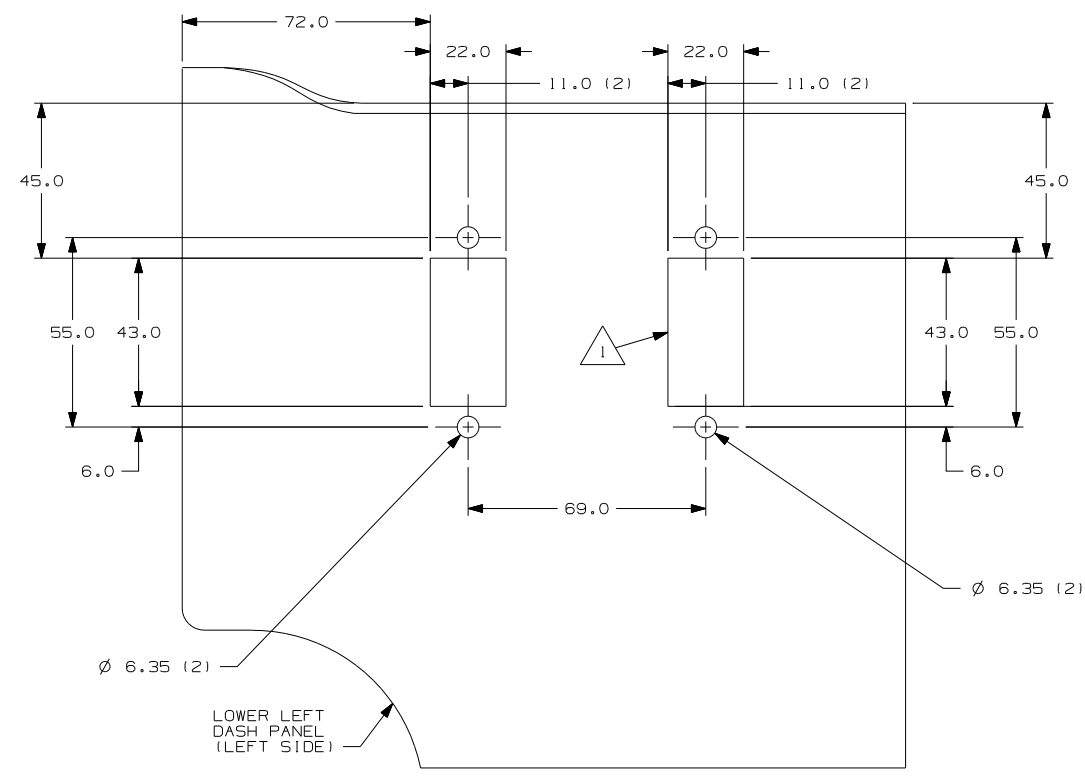
DETAIL CA (16E) (53Z)



DETAIL CB (16E) (IPY) (53Z)



DETAIL CC (16E)



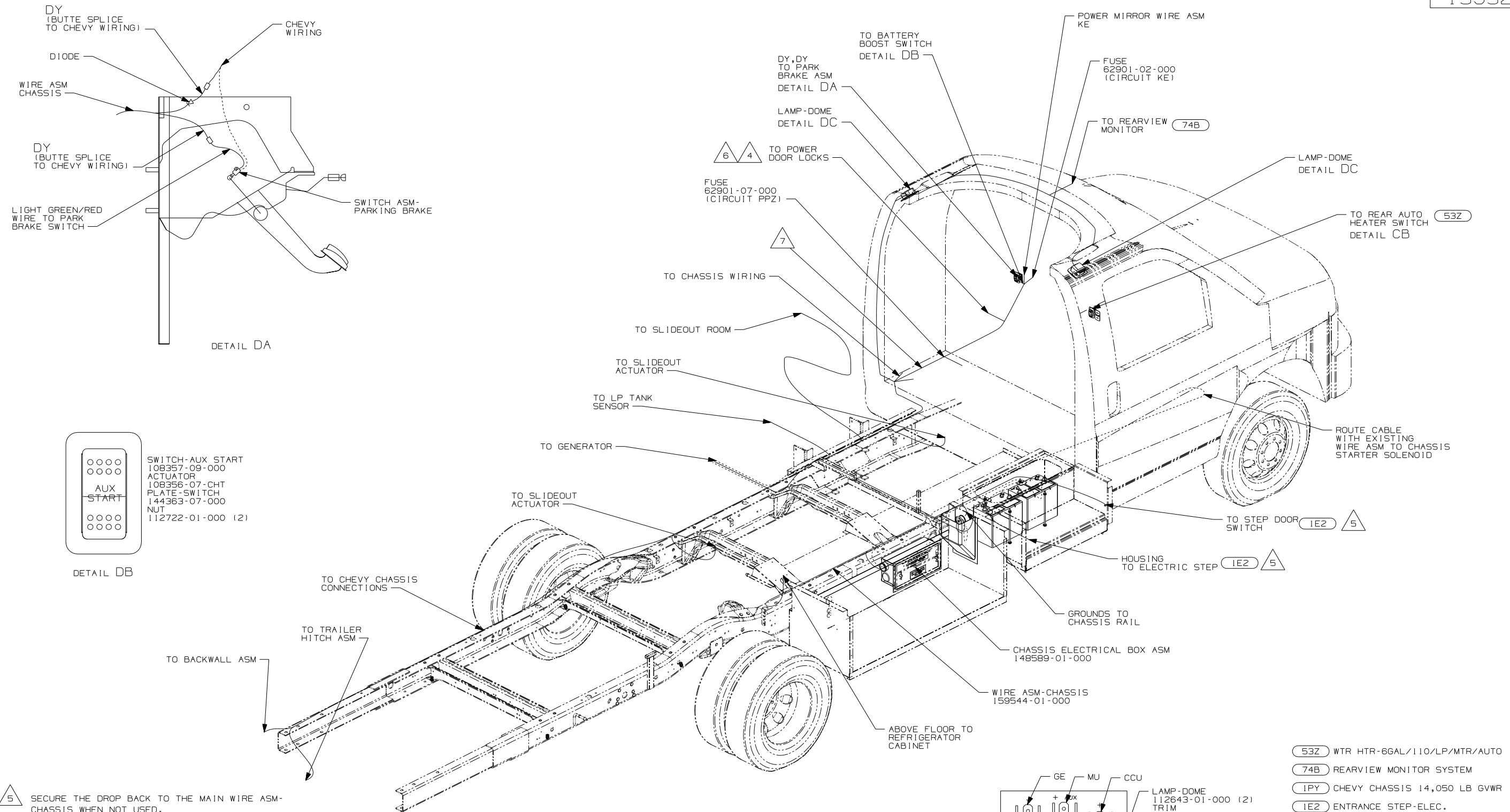
VIEW CD (IPY) (53Z)

NOTES:

1 THIS CUTOUT ONLY USED WITH (53Z)

- (53Z) WTR HTR-6GAL/110/LP/MTR/AUTO
- (16E) FORD CHASSIS 14,050 LB.GVWR
- (IPY) CHEVY CHASSIS 14,050 LB.GVWR
- (265) CODES/STANDARDS-CSA/CMVSS
- (1B1) CODES/STANDARDS-USA

FIRST USED	07 325F
TITLE	DO NOT SCALE DRAWING
SHEET 3	WIRING INSTL-CHASSIS
PART NO	159522
REV	

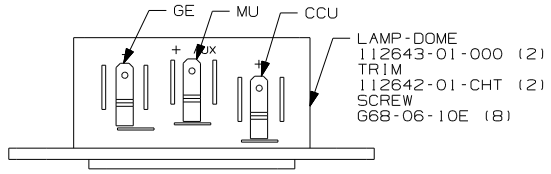


- 5 SECURE THE DROP BACK TO THE MAIN WIRE ASM-CHASSIS WHEN NOT USED.
- 4 THE TAN WIRE IS LOCATED IN POSITION A-4 AND THE GRAY WIRE IS IN LOCATION D-5 OF THE 30 PIN CONNECTOR.

- 3. SECURE WIRE ASM AND CABLES WITH WIRE TIE 8343-01-000 OR 116673-01-000 AT NOT MORE THAN 600mm CENTER ALONG ENTIRE ROUTED PATH.
- 2. SECURE CONDUIT 41953-09, -10, -11, -13 ASN-14 OVER ALL WIRES IN CONTACT WITH SHARP EDGES.

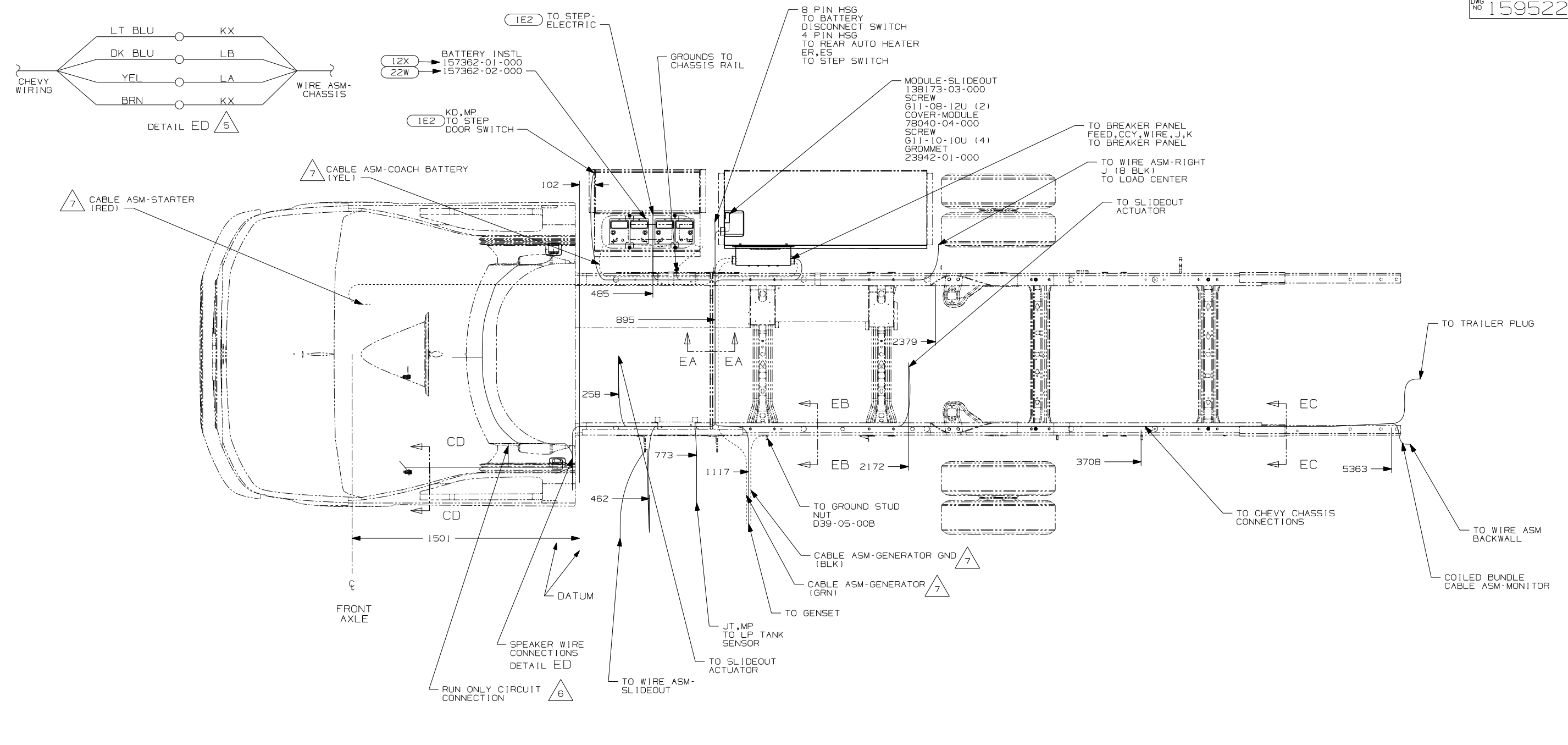
1. LEGEND: — WINNEBAGO; CABLE; - - - - - CHASSIS SUPPLIED WIRING.

- 7 WIRE ASM-CHASSIS ROUTS UNDER SEAT IN THIS AREA. BETWEEN SEAT AND DASH, ROUTE WIRING UNDER FLOOR MAT AND WIRE TIE TO EXISTING CHAVY WIRING.
- 6 REMOVE A-PILLAR LOWER COVER TO ACCESS CHEVY CONNECTORS TO DOOR ASM. CONNECT GRY TO WL (2 PLACES) AND CONNECT TAN TO WM (2 PLACES) FOR DOOR LOCK ACTUATOR.

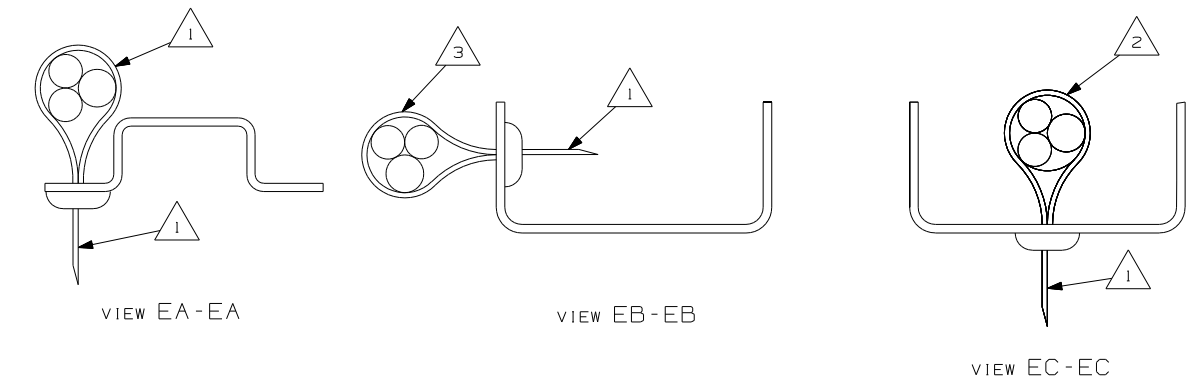


- 53Z WTR HTR-6GAL/110/LP/MTR/AUTO
- 74B REARVIEW MONITOR SYSTEM
- IPY CHEVY CHASSIS 14,050 LB GVWR
- 1E2 ENTRANCE STEP-ELEC.
- 265 CODES/STANDARDS-CSA/CMVSS
- 1B1 CODES/STANDARDS USA

FIRST USED	07 325F
TITLE	DO NOT SCALE DRAWING
	WIRING INSTL-CHASSIS
SHEET 4	PART NO 159522 REV



- 7 SEE BATTERY INSTALLATION FOR ADDITIONAL INFORMATION.
- 6 CONNECT "FEED" CIRCUIT TO CHEVY BROWN WIRE AT B-POST.
- 5 BOTH POSITIVE WIRES ARE TAN. TO TEST, TURN THE RADIO FADE ALL THE WAY TO THE LEFT. CONNECT THE NEGATIVE TERMINAL OF A TEST SPEAKER TO THE WHITE WIRE. THEN ALTERNATE THE TWO TAN WIRES TO THE POSITIVE TERMINAL. WHICHEVER IS THE LOUDER IS THE ONE THAT CONNECTS TO CIRCUIT LA. THE OTHER CONNECTS TO CIRCUIT KX.
- 4 WIRES TO BE TIED TO CROSS MEMBER USING EXISTING HOLES.
- 3 WIRES TO BE TIED TO TOP OF RAIL USING EXISTING HOLES.
- 2 WIRES TO BE TIED TO INSIDE OF RAIL USING EXISTING HOLES.
- 1 CUT OFF EXCESS END OF WIRE TIE.



- 22W BATTERY-SECOND
- 12X BATTERY-ONE
- 265 CODES/STANDARDS-CSA/CMVSS
- 1PY CHEVY CHASSIS 14,050 LB GVWR
- 1E2 ENTRANCE STEP-ELEC.
- 1B1 CODES/STANDARDS USA

FIRST USED	07 325F
DO NOT SCALE DRAWING	
TITLE: WIRING INSTL-CHASSIS	
SHEET 5	PART NO 159522 REV