



DANGER

Danger of electrical shock, burns or death. Always remove all power sources before attempting any repair, service or diagnostic work. Power can be present from shore power, generator, inverter or battery. All power sources must be disabled and secured before performing any service.

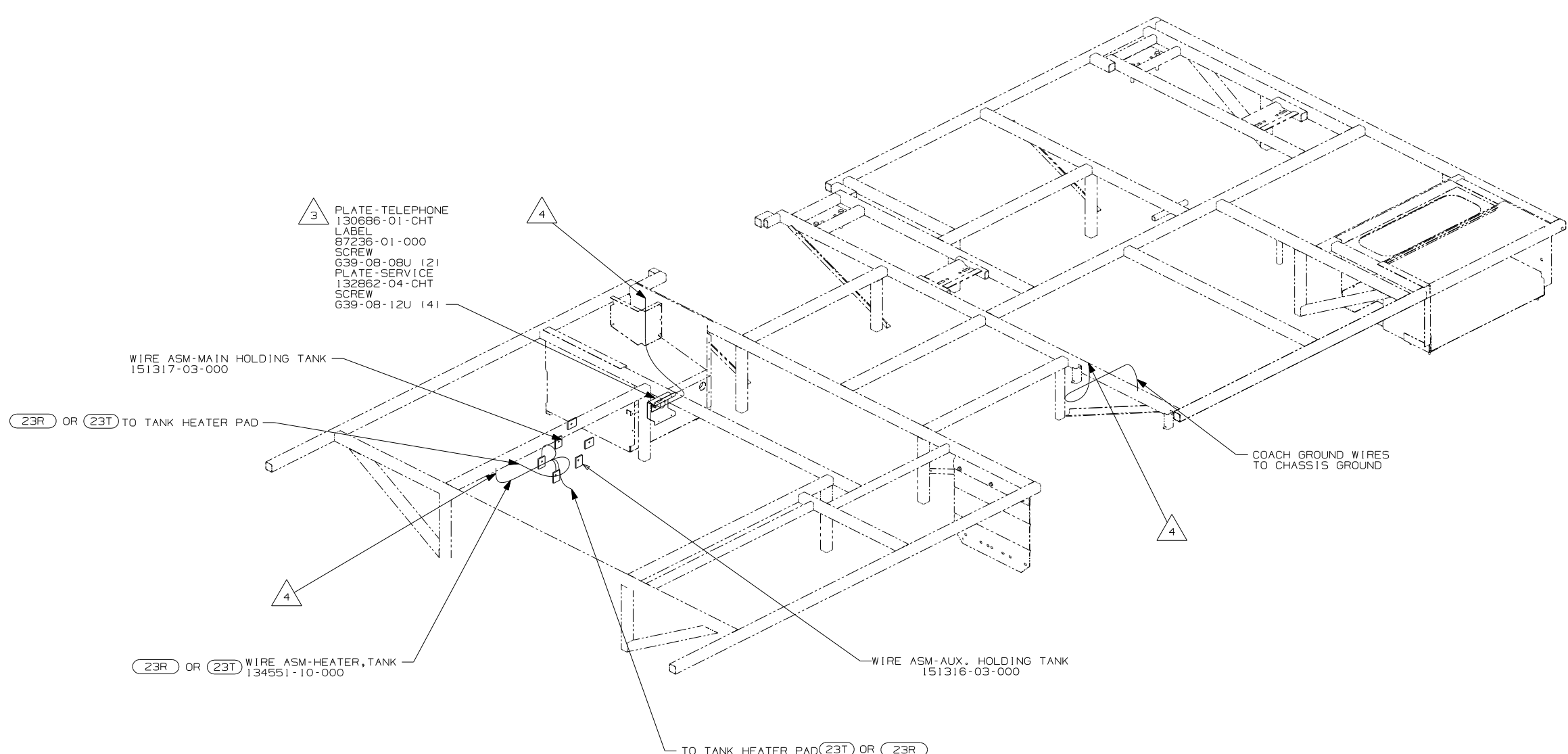


CAUTION

If you lack the skills, tools or equipment to perform diagnostic or repair work leave such work to an authorized Winnebago Industries dealer or other qualified shop.

8 7 6 5 4 3 2

RELEASE	REV DATE A	DWG NO 159521
REV ZONE	REVISION RECORD	DATE DFR-0R16



- (23R) DRAINAGE SYSTEM/HEAT-PREP
- (23T) DRAINAGE SYSTEM-HEATED
- (265) CODES/STANDARDS-CSA/CMVSS
- (1B1) CODES/STANDARDS USA

(1B1) (265)



DFTR	ORIG. DATE
CHKR	ALL DIMENSIONS ARE IN MILLIMETERS
P.E.	
M.E.	FIRST USED
DSNR	07 325F

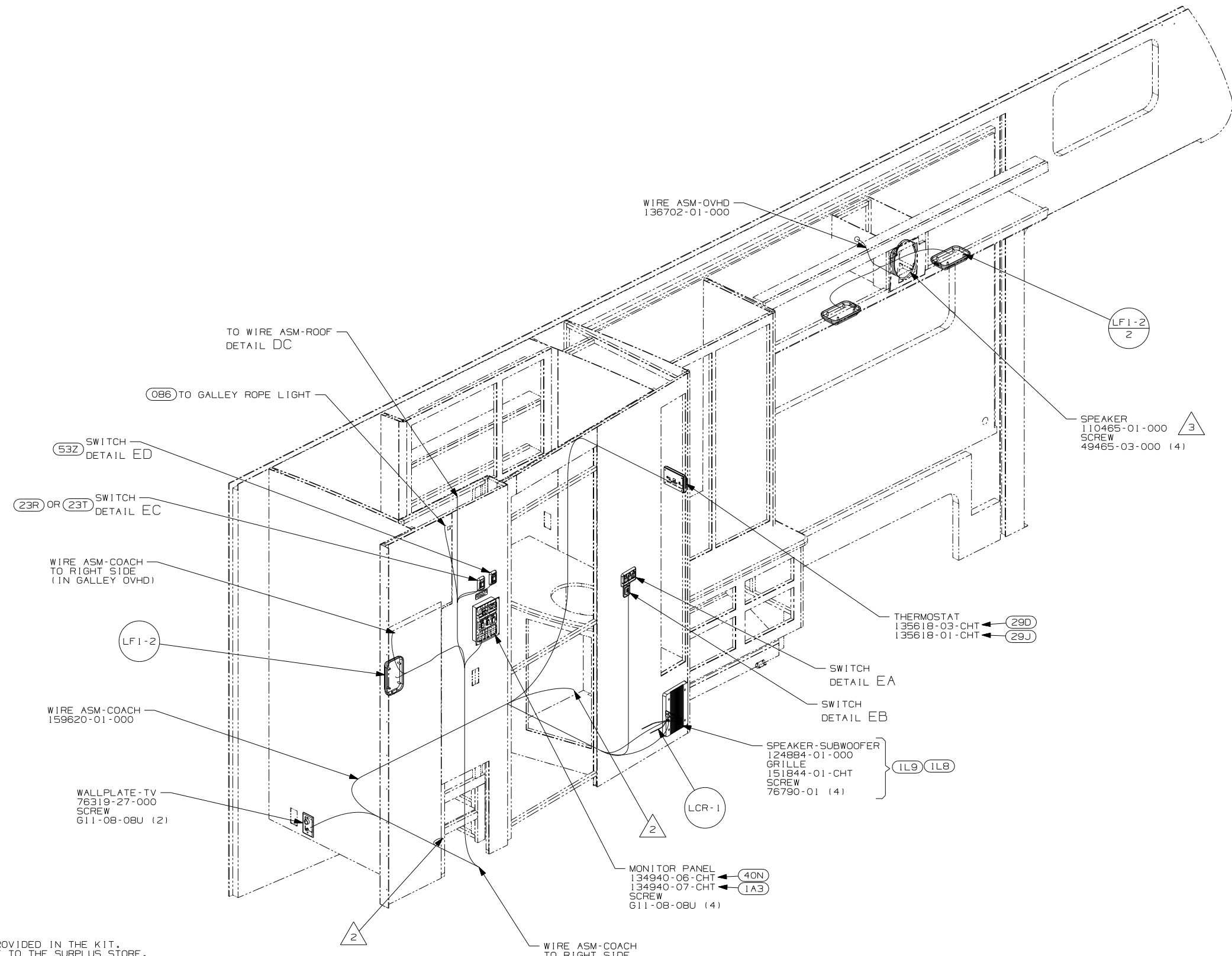
UNSPECIFIED TOLERANCES ARE:	MATERIAL:
HOLE DIM (X) :	
ONE-PLACE (X.X) :	
TWO-PLACE (X.XX) :	
ANGLE :	
THIRD ANGLE PROJECTION	

DO NOT SCALE DRAWING	
TITLE:	WIRING INSTL-BODY, 12V
SHEET 1 OF 7	PART NO 159521 REV

- 4 WIRE ASM PASSES THROUGH FLOOR IN THIS AREA.
- 3 CONNECT WIRES TO MATCHING COLORS ON TELEPHONE PLATE.
2. ROUTE TANK SENSOR WIRES SO THEY DO NOT PASS OVER SENSORS. USE WIRE TIE MOUNT 155366-01-000 AND WIRE TIE 8343-01-000 AS NEEDED. TANK SURFACE MUST BE CLEANED USING ISOPROPYL ALCOHOL AND PRIME WITH PRIMER 94.
1. ALL WIRES TO BE SECURED WITH CLAMP 10495 OR 10497 OR WIRE TIE 8343 OR 108046 EVERY 600mm, USE SCREW G67-XX-XXX OR G56-XX-XXX AS APPROPRIATE FOR INSTALLATION.

FOR ELECTRICAL TORQUE SPECIFICATIONS SEE DWG NO. 128783-01-000

FOR ELECTRICAL CALLOUTS SEE DWG NO. 121339-01-000



3 USE ONE OF THE SPEAKERS PROVIDED IN THE KIT. SEND THE SCREWS IN THE KIT TO THE SURPLUS STORE. SEND THE KIT WIRE ASM-PIGTAIL TO WIRE PREP TO BE INCORPORATED INTO A WIRE ASM.

2 WIRE ASM PASSES THROUGH FLOOR IN THIS AREA.

1. ALL WIRES TO BE SECURED WITH CLAMP 10495 OR 10497 OR WIRE TIE 8343 OR 108046 EVERY 600mm, USE SCREW G67-XX-XXX OR G56-XX-XXX AS APPROPRIATE FOR INSTALLATION.

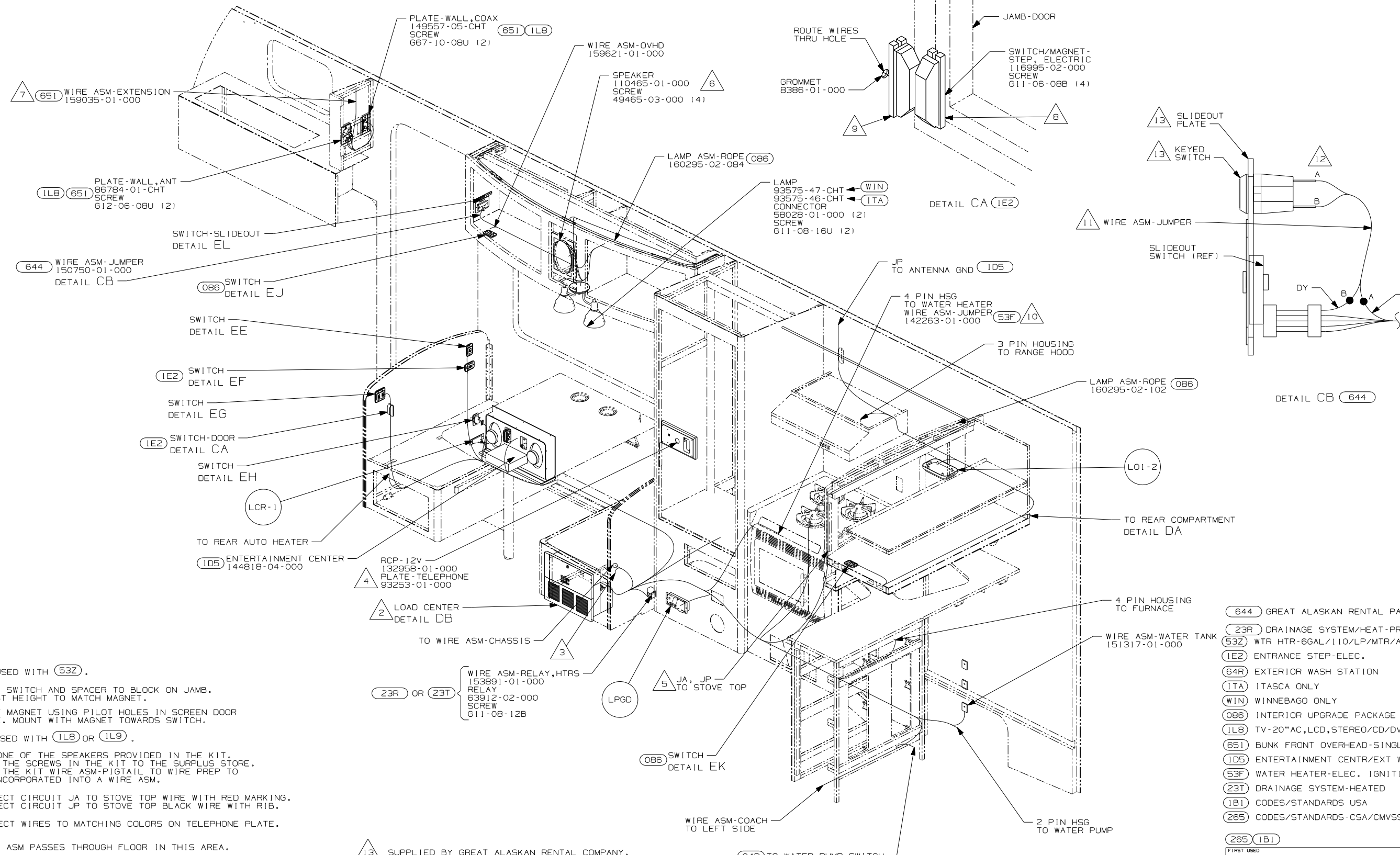
NOTES:

- (23R) DRAINAGE SYSTEM/HEAT-PREWIRED
- (53Z) WTR HTR-6GAL/110/LP/MTR/AUTO
- (23T) DRAINAGE SYSTEM-HEATED
- (086) INTERIOR UPGRADE PACKAGE
- (29D) A/C ROOF-ONE 13,500 BTU
- (1LB) TV-20"AC,LCD,STEREO/CD/DVD
- (1L9) ENTERTAINMENT CENTER-CABOVER
- (1A3) GENERATOR WITHOUT
- (29J) AC HEAT PUMP-1
- (40N) GEN-4.0KW-ONANGAS-MICROQUJET
- (265) CODES/STANDARDS-CSA/CMVSS
- (1B1) CODES/STANDARDS USA

FOR ELECTRICAL TORQUE SPECIFICATIONS SEE DWG NO. 128783-01-000

FOR ELECTRICAL CALLOUTS SEE DWG NO. 121339-01-000

FIRST USED	07 325F	
DO NOT SCALE DRAWING		
TITLE:	WIRING INSTL-BODY, 12V	
SHEET 2	PART NO	159521
REV		



- 10 NOT USED WITH 53Z.
 - 9 MOUNT SWITCH AND SPACER TO BLOCK ON JAMB. ADJUST HEIGHT TO MATCH MAGNET.
 - 8 MOUNT MAGNET USING PILOT HOLES IN SCREEN DOOR FRAME. MOUNT WITH MAGNET TOWARDS SWITCH.
 - 7 NOT USED WITH 1LB OR 1L9.
 - 6 USE ONE OF THE SPEAKERS PROVIDED IN THE KIT. SEND THE SCREWS IN THE KIT TO THE SURPLUS STORE. SEND THE KIT WIRE ASM-PIGTAIL TO WIRE PREP TO BE INCORPORATED INTO A WIRE ASM.
 - 5 CONNECT CIRCUIT JA TO STOVE TOP WIRE WITH RED MARKING. CONNECT CIRCUIT JP TO STOVE TOP BLACK WIRE WITH R1B.
 - 4 CONNECT WIRES TO MATCHING COLORS ON TELEPHONE PLATE.
 - 3 WIRE ASM PASSES THROUGH FLOOR IN THIS AREA.
 - 2 SEE LOAD CENTER/ATS ASM FOR ADDITIONAL INFORMATION.
- NOTES:
- ALL WIRES TO BE SECURED WITH CLAMP 10495 OR 10497 OR WIRE TIE 8343 OR 108046 EVERY 600mm. USE SCREW 667-XX-XXX OR 656-XX-XXX AS APPROPRIATE FOR INSTALLATION.

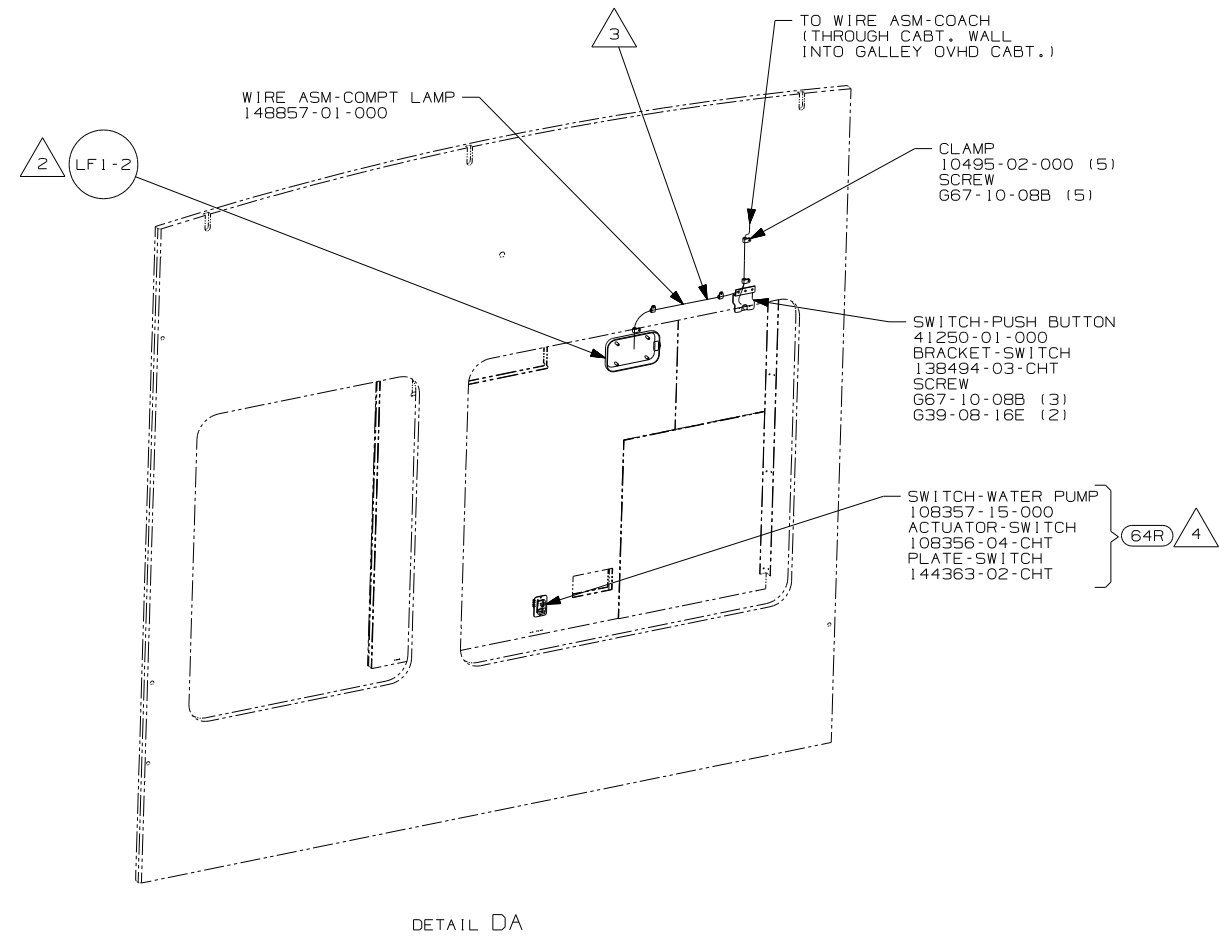
- 13 SUPPLIED BY GREAT ALASKAN RENTAL COMPANY.
- 12 REMOVE TERMINALS (SUPPLIED WITH KEY SWITCH), CRIMP ON TO WIRE ASM-JUMPER, AND RECONNECT TO KEY SWITCH.
- 11 CUT CIRCUIT DY GOING TO SLIDEOUT SWITCH HOUSING AND RECONNECT AS SHOWN.

FOR ELECTRICAL TORQUE SPECIFICATIONS SEE DWG NO. 128783-01-000

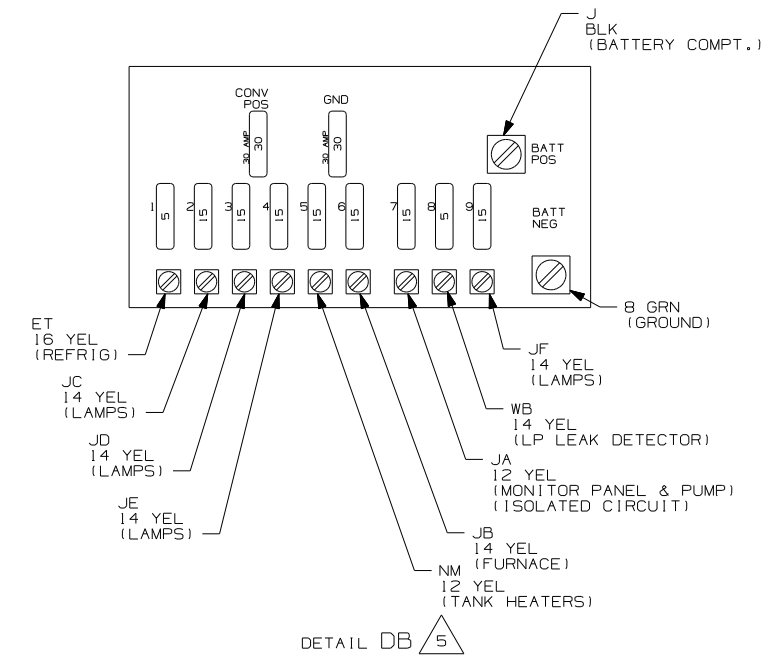
FOR ELECTRICAL CALLOUTS SEE DWG NO. 121339-01-000

- 644 GREAT ALASKAN RENTAL PACKAGE
- 23R DRAINAGE SYSTEM/HEAT-PREP
- 53Z WTR HTR-6GAL/110/LP/MTR/AUTO
- 1E2 ENTRANCE STEP-ELEC.
- 64R EXTERIOR WASH STATION
- ITA ITASCA ONLY
- WIN WINNEBAGO ONLY
- 086 INTERIOR UPGRADE PACKAGE
- 1LB TV-20"AC,LCD,STEREO/CD/DVD
- 651 BUNK FRONT OVERHEAD-SINGLE
- 1D5 ENTERTAINMENT CENTR/EXT W/CD
- 53F WATER HEATER-ELEC. IGNITION
- 23T DRAINAGE SYSTEM-HEATED
- 1B1 CODES/STANDARDS USA
- 265 CODES/STANDARDS-CSA/CMVSS

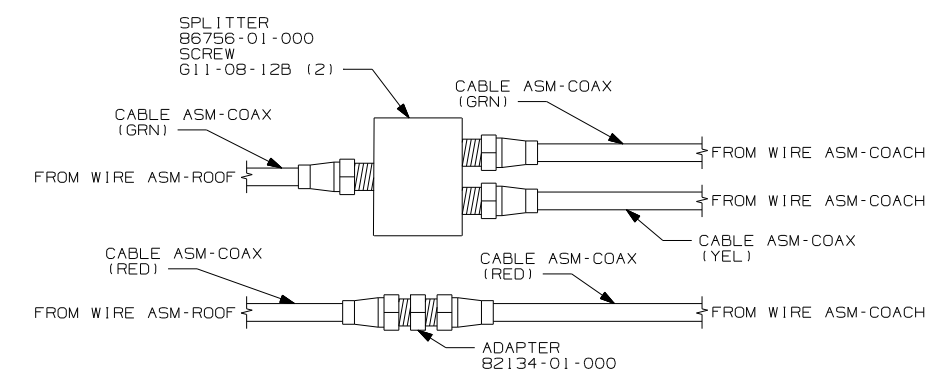
FIRST USED	07 325F
DO NOT SCALE DRAWING	
TITLE:	WIRING INSTL-BODY, 12V
SHEET 3	PART NO 159521 REV



DETAIL DA



DETAIL DB



DETAIL DC

- 5 FOR REFERENCE ONLY. SEE LOAD CENTER/ATS ASM FOR ADDITIONAL INFORMATION.
- 4 WITHOUT (64R) WIRE TIE SWITCH AND WIRE ASSEMBLY TO MAIN HARNESS.
- 3 WIRE ASM IS TO BE CLAMPED TO BACKWALL AND COMPARTMENT DOOR AS SHOWN WITH A 100MM LOOP TO ALLOW FOR DOOR MOVEMENT.
- 2 PUT NOTCH IN SIDE OF LIGHT BASE TO ALLOW CONVOLUTED TUBING AND WIRE TO ENTER LIGHT FIXTURE.

1. ALL WIRES TO BE SECURED WITH CLAMP 10495 OR 10497 OR WIRE TIE 8343 OR 108046 EVERY 600mm, USE SCREW 667-XX-XXX OR 656-XX-XXX AS APPROPRIATE FOR INSTALLATION.

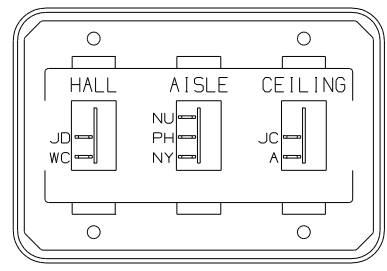
NOTES:

- (64R) EXTERIOR WASH STATION
- (265) CODES/STANDARDS-CSA/CMVSS
- (1B1) CODES/STANDARDS USA

FIRST USED		07 325F	
DO NOT SCALE DRAWING			
TITLE: WIRING INSTL-BODY, 12V			
SHEET 4	PART NO	159521	REV

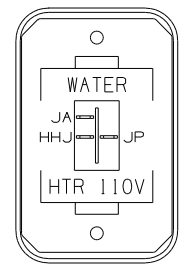
FOR ELECTRICAL TORQUE SPECIFICATIONS SEE DWG NO. 128783-01-000

FOR ELECTRICAL CALLOUTS SEE DWG NO. 121339-01-000



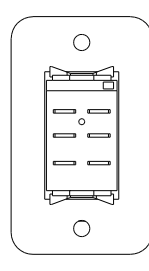
SWITCH-ROCKER 135740-01-CHT (2)
135740-02-CHT
SWITCH-BASE 135741-03-CHT
SWITCH-BEZEL 135742-25-CHT
SCREW 611-08-08U (4)

DETAIL EA



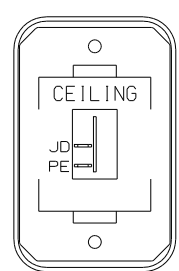
SWITCH-ROCKER 135740-06-CHT
SWITCH-BASE 135741-01-CHT
SWITCH-BEZEL 135742-35-CHT
SCREW 611-08-08U (2)

DETAIL ED (53Z)



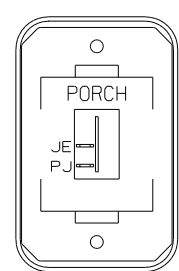
SWITCH-BATTERY,DISC 108357-06-000
ACTUATOR-SWITCH 108356-11-CHT
PLATE-SWITCH 98351-07-CHT
SCREW 611-06-10U (2)

DETAIL EH



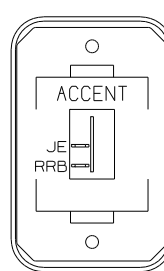
SWITCH-ROCKER 135740-01-CHT
SWITCH-BASE 135741-01-CHT
SWITCH-BEZEL 135742-07-CHT
SCREW 611-08-08U (2)

DETAIL EB



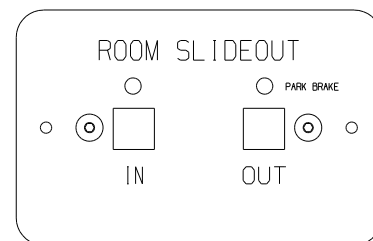
SWITCH-ROCKER 135740-01-CHT
SWITCH-BASE 135741-01-CHT
SWITCH-BEZEL 135742-09-CHT
SCREW 611-08-08U (2)

DETAIL EE



SWITCH-ROCKER 135740-01-CHT
SWITCH-BASE 135741-01-CHT
SWITCH-BEZEL 135742-50-CHT
SCREW 611-08-08U (2)

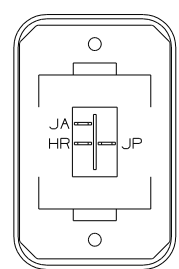
DETAIL EJ (086)



SWITCH-ASM-SLIDEOUT 138173-04-000
LABEL-WARNING 116549-01-000

WARNING UNDERSTAND OPERATOR'S MANUAL BEFORE USING
KEEP PEOPLE AND OBSTRUCTIONS CLEAR OF
SLIDEOUT ROOM WHEN OPERATING TO AVOID
INJURY AND/OR PROPERTY DAMAGE

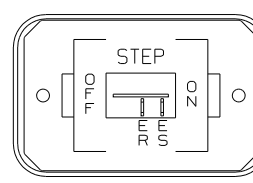
DETAIL EL



SWITCH-ROCKER 135740-06-CHT
SWITCH-BASE 135741-01-CHT
SWITCH-BEZEL 135742-01-CHT
SCREW 611-08-08U (2)
LABEL 134563-01-CHT

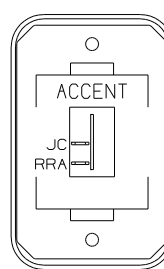
HOLDING TANK HEATER
TURN OFF When Not In Use
SEE OPERATORS MANUAL

DETAIL EC (23T) OR (23R)



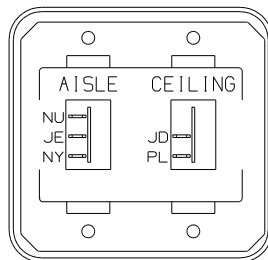
SWITCH-ROCKER 135740-01-CHT
SWITCH-BASE 135741-01-CHT
SWITCH-BEZEL 135742-11-CHT
SCREW 611-08-08U (2)

DETAIL EF (1E2)



SWITCH-ROCKER 135740-01-CHT
SWITCH-BASE 135741-01-CHT
SWITCH-BEZEL 135742-50-CHT
SCREW 611-08-08U (2)

DETAIL EK (086)



SWITCH-ROCKER 135740-01-CHT (2)
SWITCH-BASE 135741-02-CHT
SWITCH-BEZEL 135742-13-CHT
SCREW 611-08-08U (4)

DETAIL EG

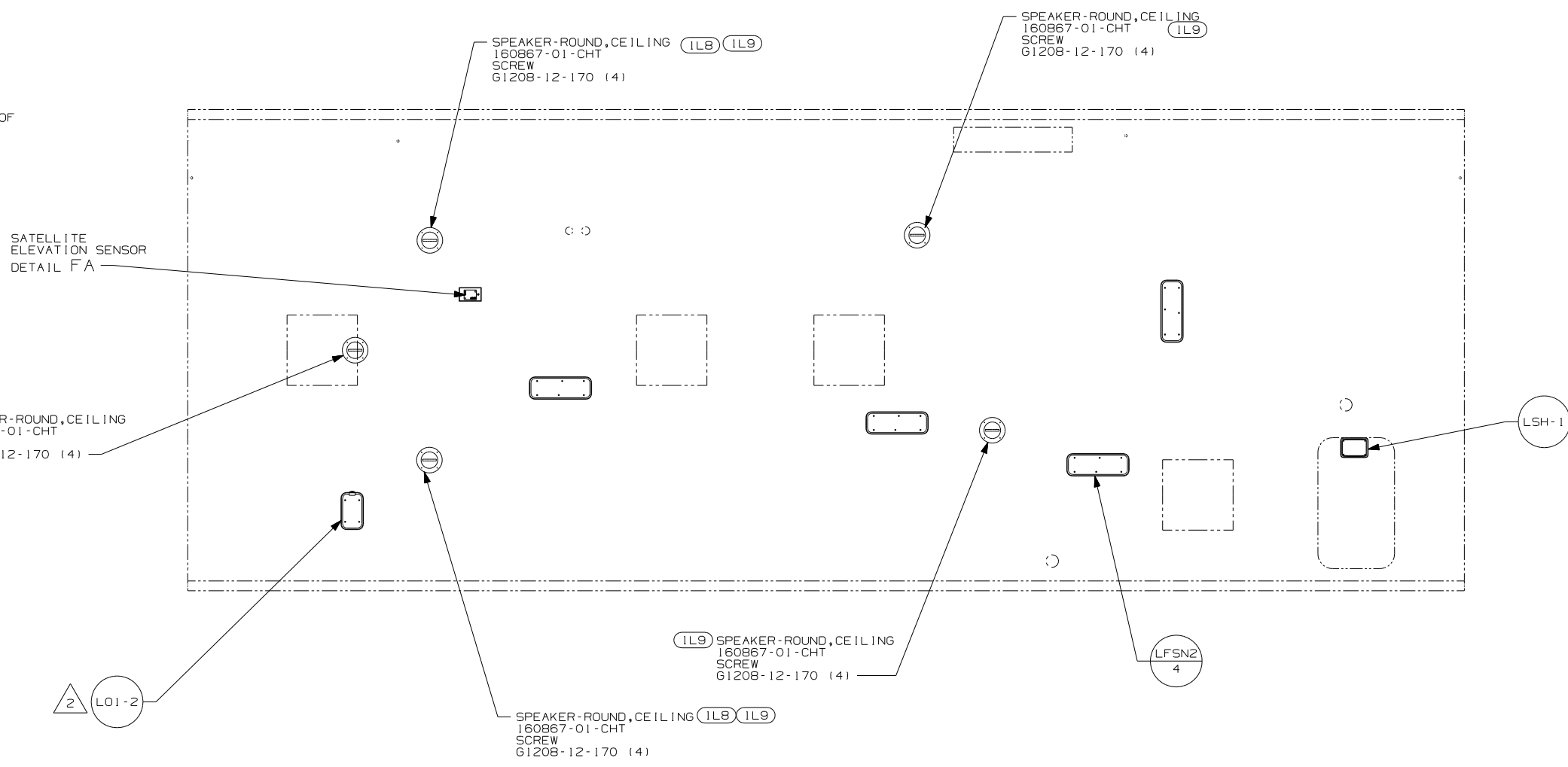
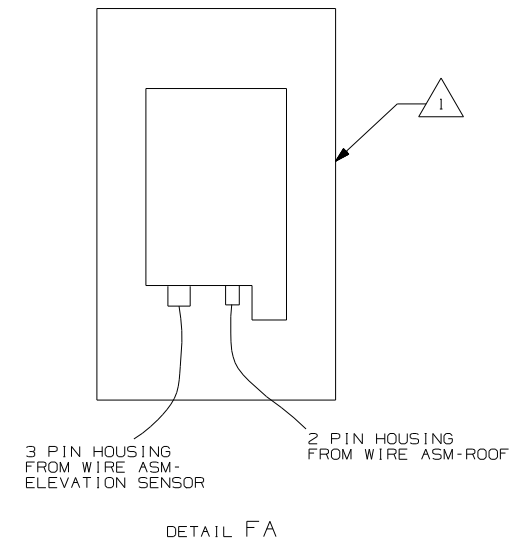
- (23R) DRAINAGE SYSTEM/HEAT-PREWIRED
- (1E2) ENTRANCE STEP-ELEC.
- (23T) DRAINAGE SYSTEM-HEATED
- (53Z) WTR HTR-6GAL/110/LP/MTR/AUTO
- (265) CODES/STANDARDS-CSA/CMVSS
- (1B1) CODES/STANDARDS USA

(1B1) (265)

FOR ELECTRICAL TORQUE SPECIFICATIONS SEE DWG NO. 128783-01-000

(X-X) FOR ELECTRICAL CALLOUTS SEE DWG NO. 121339-01-000

FIRST USED	07 325F
TITLE	DO NOT SCALE DRAWING
	WIRING INSTL-BODY, 12V
SHEET 5	PART NO 159521 REV



NOTES:

2 NOT USED WITH (1L9).

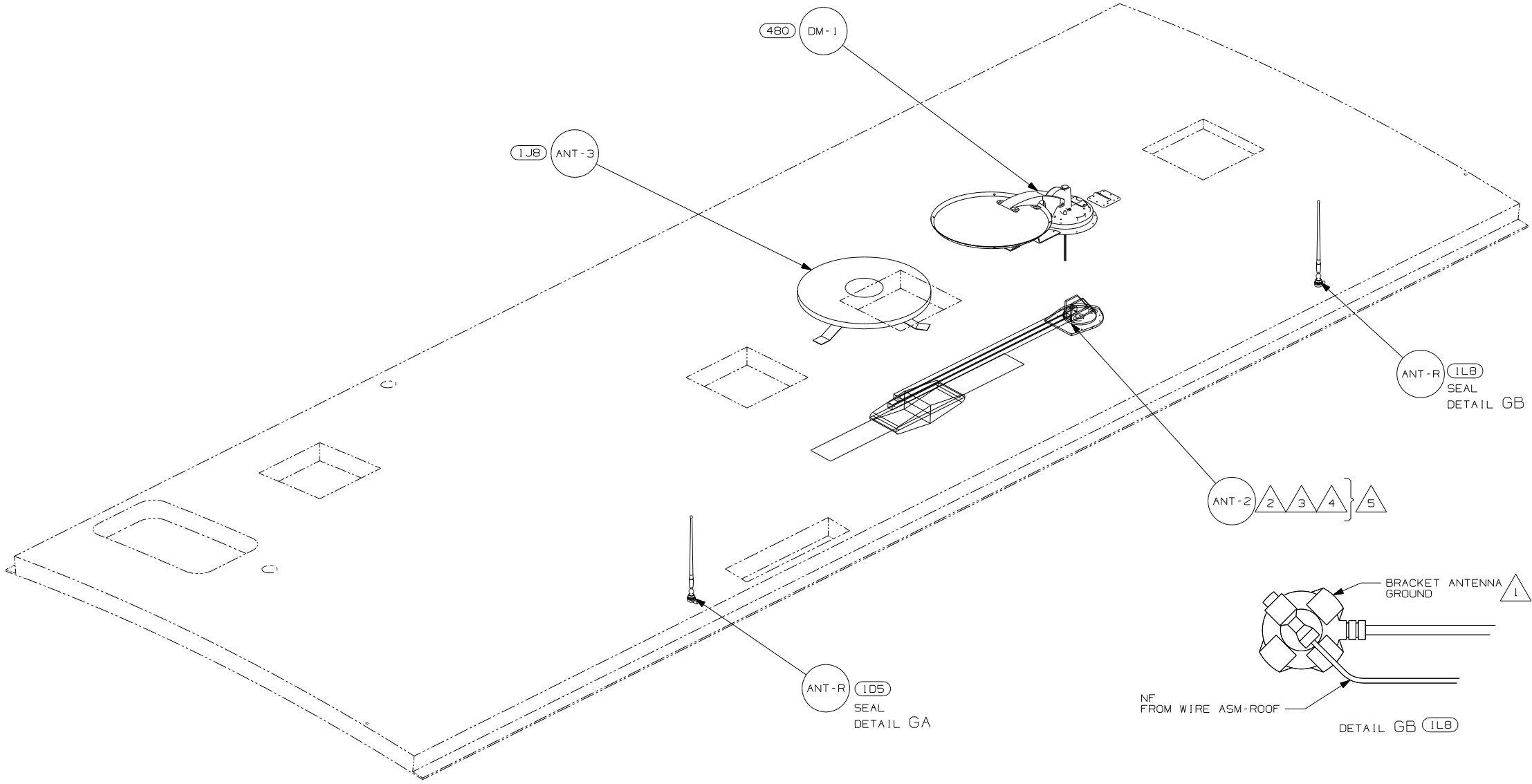
1 SENSOR SUPPLIED WITH SATELLITE ASSEMBLY.

FOR ELECTRICAL TORQUE SPECIFICATIONS SEE DWG NO. 128783-01-000

FOR ELECTRICAL CALLOUTS SEE DWG NO. 121339-01-000

- (1L8) TV-20"AC, LCD, STEREO/CD/DVD
- (1L9) ENTERTAINMENT CENTER-CABOVER
- (265) CODES/STANDARDS- CSA/CMVSS
- (1B1) CODES/STANDARDS USA

FIRST USED		07 325F	
DO NOT SCALE DRAWING			
TITLE: WIRING INSTL - BODY, 12V			
SHEET 6	PART NO	159521	REV



5 NOT USED WITH 1JB.

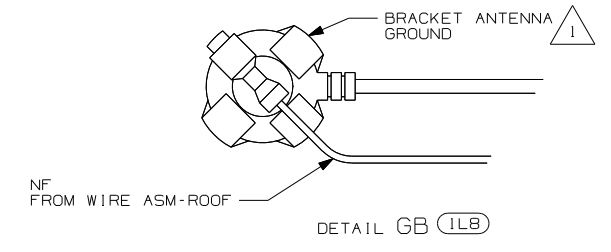
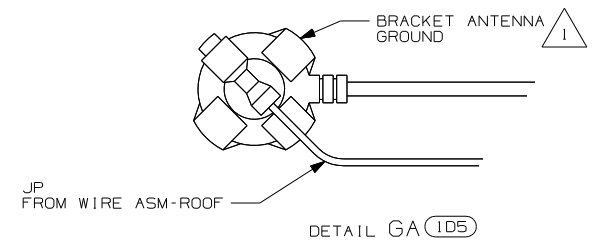
4 ADD RUBBER BUMPER TO ROOF UNDER EACH END OF ANTENNA IN DOWN POSITION WHICH MAY COME INTO CONTACT WITH ROOF.

3 LOCATE CLAMP TO RETAIN CABLE BUT NOT TO RESTRICT ANTENNA TRAVEL.

2 SEE DRAWING 76319-01-000 FOR INSTALLATION INSTRUCTIONS FOR TV ANTENNA.

1 WRAP BRACKET LEGS AROUND ANTENNA BASE.

NOTES:



- 1JB TV ANTENNA-OMNIDIRECTIONAL
- 480 SATELLITE DISH & ELEV.SENSOR
- 1LB TV-20"AC,LCD,STEREO/CD/DVD
- 1D5 ENTERTAINMENT CENTR/EXT W/CD
- 265 CODES/STANDARDS-CSA/CMVSS
- 1B1 CODES/STANDARDS USA

FOR ELECTRICAL TORQUE SPECIFICATIONS SEE DWG NO. 128783-01-000

FOR ELECTRICAL CALLOUTS SEE DWG NO. 121339-01-000

FIRST USED	07 325F
DO NOT SCALE DRAWING	
TITLE:	WIRING INSTL-BODY, 12V
SHEET 7	PART NO 159521 REV