



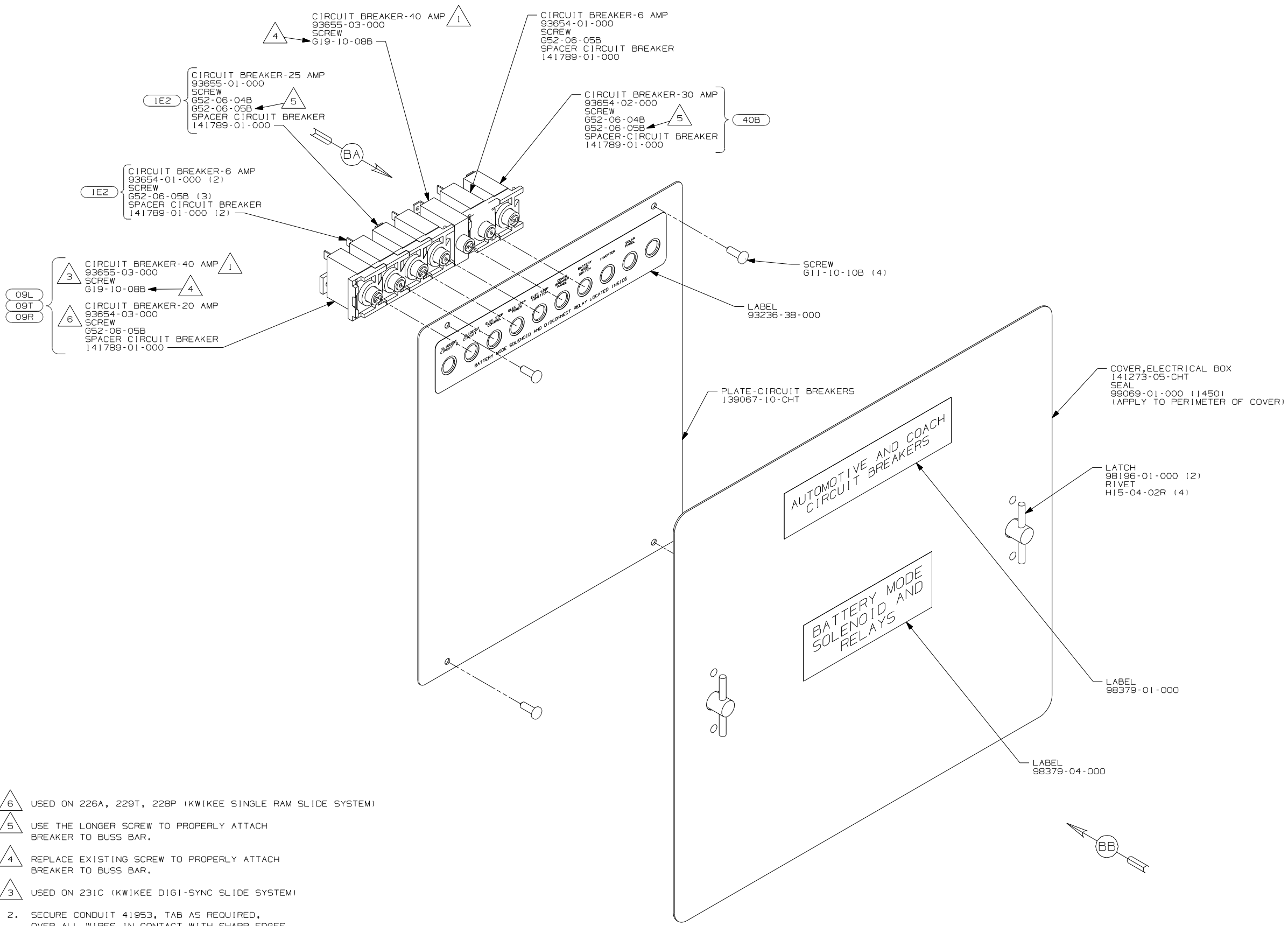
**DANGER**

**Danger of electrical shock, burns or death.** Always remove all power sources before attempting any repair, service or diagnostic work. Power can be present from shore power, generator, inverter or battery. All power sources must be disabled and secured before performing any service.



**CAUTION**

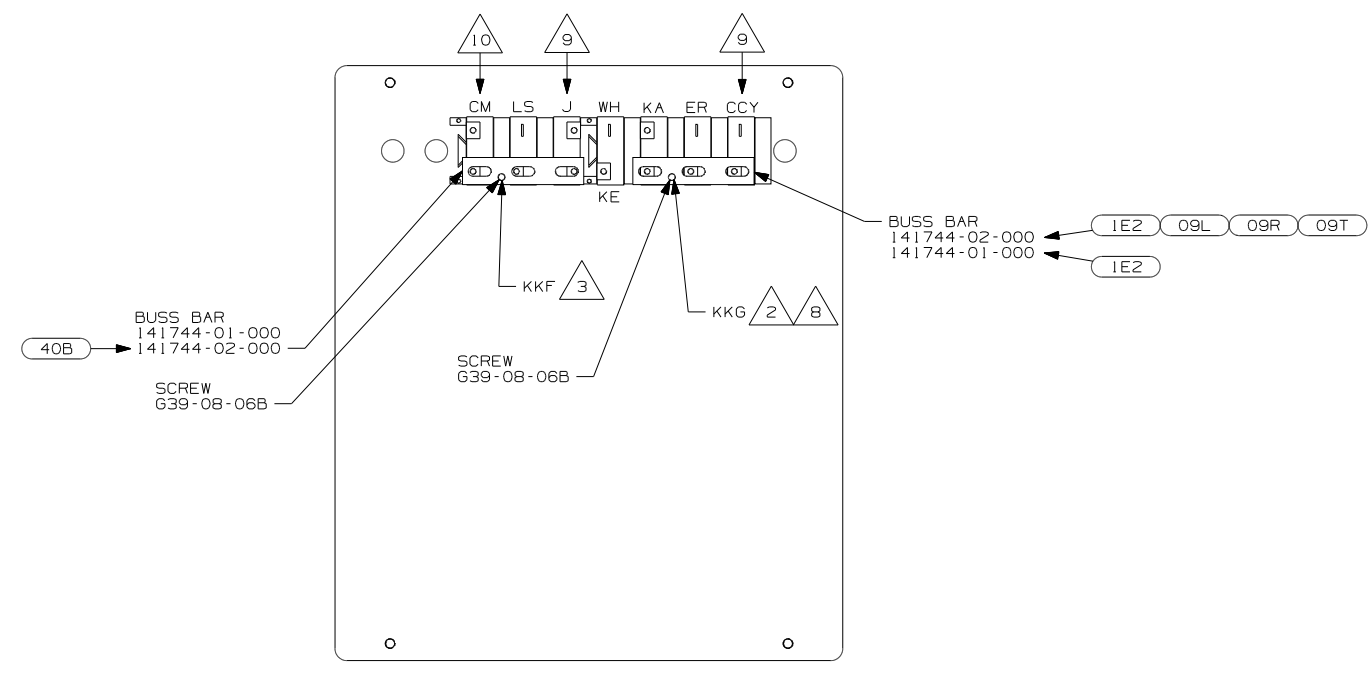
If you lack the skills, tools or equipment to perform diagnostic or repair work leave such work to an authorized Winnebago Industries dealer or other qualified shop.



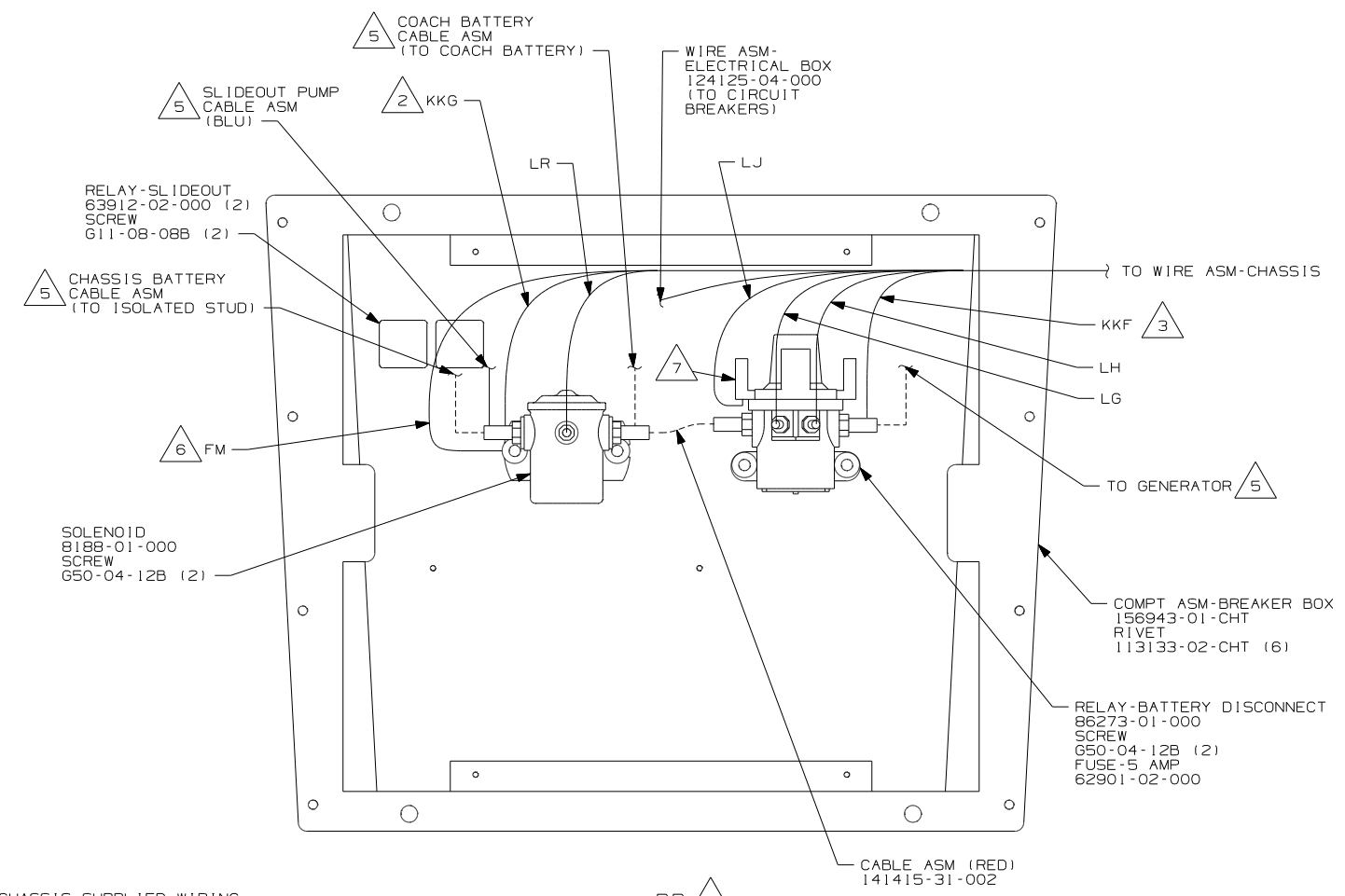
- NOTES:
- 1. SPACER NOT REQUIRED ON 40 AMP BREAKER.
  - 2. SECURE CONDUIT 41953, TAB AS REQUIRED, OVER ALL WIRES IN CONTACT WITH SHARP EDGES.
  - 3. USED ON 231C (KWIKEE DIGI-SYNC SLIDE SYSTEM)
  - 4. REPLACE EXISTING SCREW TO PROPERLY ATTACH BREAKER TO BUSS BAR.
  - 5. USE THE LONGER SCREW TO PROPERLY ATTACH BREAKER TO BUSS BAR.
  - 6. USED ON 226A, 229T, 228P (KWIKEE SINGLE RAM SLIDE SYSTEM)

- 40B INVERTER-DC/AC, 300 WATT
- 09R ENTRANCE STEP-ELEC.
- 09T SLIDEOUT RM-DINETTE, BENCH
- 1E2 ENTRANCE STEP-ELEC.
- 09L SLIDEOUT ROOM FRONT LEFT
- 265 CODES/STANDARDS-CSA/CMVSS
- 1B1 CODES/STANDARDS USA

<b>WINNEBAGO</b>		COPYRIGHT 2006 WINNEBAGO INDUSTRIES, INC.	
DFTR	ORIG. DATE		
CHKR	ALL DIMENSIONS ARE IN MILLIMETERS		
P.E.	FIRST USED	07 200-SER	
M.E.			
DSNR			
UNSPECIFIED TOLERANCES ARE:		MATERIAL:	
WHOLE DIM (X)	:		
ONE-PLACE (X.X)	:		
TWO-PLACE (X.XX)	:		
ANGLE	:		
THIRD ANGLE PROJECTION			
DO NOT SCALE DRAWING			
TITLE: CHASSIS ELECTRICAL BOX ASM			
SHEET 1 OF 2	PART NO	156959	REV
REF:	1 5/15/2007		



VIEW BA 4



VIEW BB 4

- 10 △ CIRCUIT IS FROM WIRE ASM-INVERTER.
- 9 △ CIRCUIT IS FROM WIRE ASM-CHASSIS.
- 8 △ IF BUSS BAR IS NOT REQUIRED CONNECT KKG DIRECTLY TO BREAKER.
- 7 △ INSERT TERMINAL FROM CIRCUIT LJ INTO FUSE HOLDER SOCKET ON RELAY.
- 6 △ SECURE WITH SOLENOID MOUNTING SCREW.
- 5 △ SEE WIRING INSTL-CHASSIS FOR ADDITIONAL INFORMATION.
- 4 △ TAPE BACK UNUSED WIRES TO HARNESS.
- 3 △ WIRE IS MARKED WITH YELLOW TAPE.
- 2 △ WIRE IS MARKED WITH PURPLE TAPE.

1. LEGEND: — WINNEBAGO: - - - - - CABLE: - - - - - CHASSIS SUPPLIED WIRING.

- 40B INVERTER-DC/AC, 300 WATT
- 09R SLIDEOUT RM-DINETTE, U-SHAPE
- 09T SLIDEOUT RM-DINETTE, BENCH
- 1E2 ENTRANCE STEP-ELEC.
- 09L SLIDEOUT ROOM FRONT LEFT
- 265 CODES/STANDARDS-CSA/CMVSS
- 1B1 CODES/STANDARDS USA

FIRST USED	07 200-SER	
TITLE	DO NOT SCALE DRAWING	
	CHASSIS ELECTRICAL BOX ASM	
SHEET 2	PART NO	156959
	REV	