



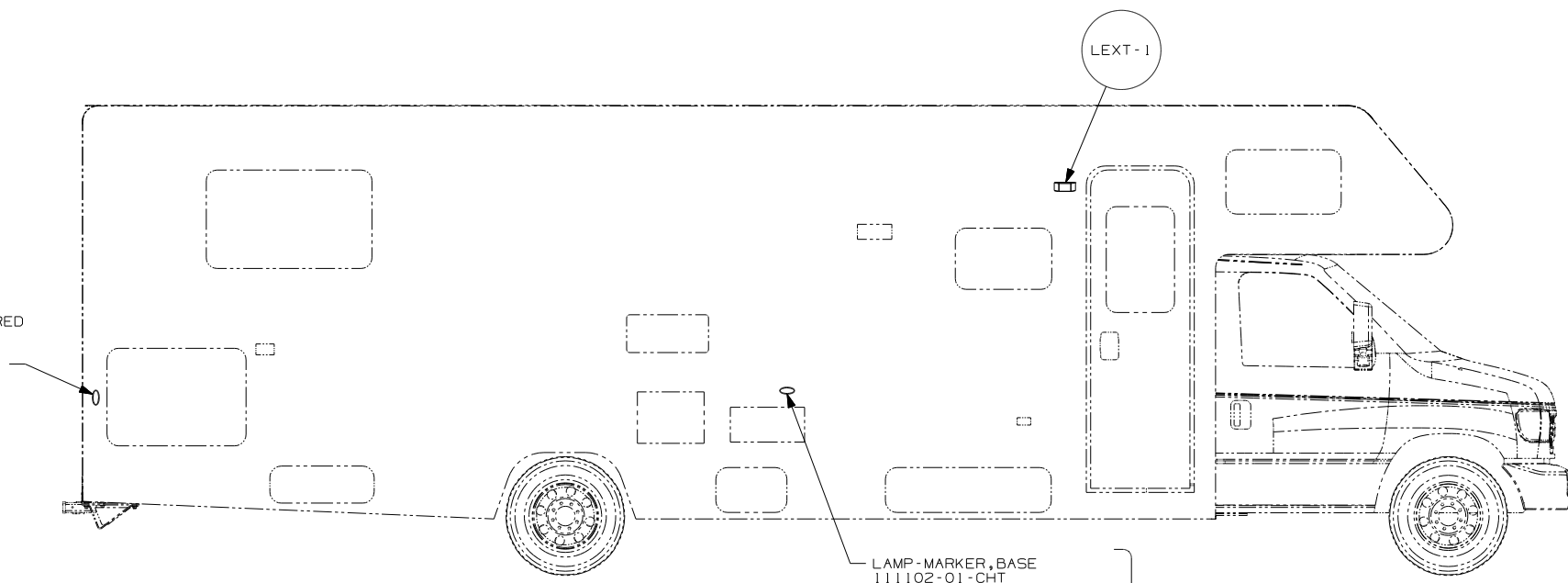
**DANGER**

**Danger of electrical shock, burns or death.** Always remove all power sources before attempting any repair, service or diagnostic work. Power can be present from shore power, generator, inverter or battery. All power sources must be disabled and secured before performing any service.



**CAUTION**

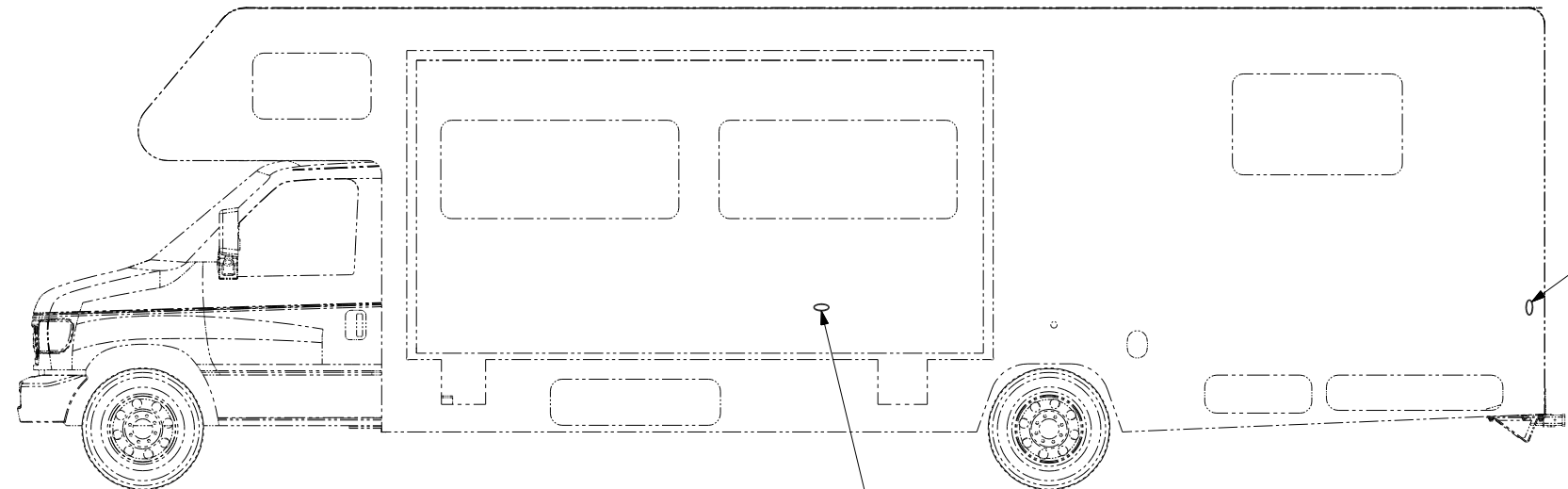
If you lack the skills, tools or equipment to perform diagnostic or repair work leave such work to an authorized Winnebago Industries dealer or other qualified shop.



LAMP-MARKER, BASE  
111102-01-CHT  
LAMP ASM-CLEARANCE, RED  
111102-03-CHT  
SCREW  
G11-08-12U (EXT) (2)

LAMP-MARKER, BASE  
111102-01-CHT  
LAMP ASM-CLEARANCE, AMBER  
111102-02-CHT  
SCREW  
G11-08-12U (EXT) (2)  
CONNECTOR  
58028-01-000 (2)

LEXT-1



LAMP-MARKER, BASE  
111102-01-CHT  
LAMP ASM-CLEARANCE, RED  
111102-03-CHT  
SCREW  
G11-08-12U (EXT) (2)

LAMP-MARKER, BASE  
111102-01-CHT  
LAMP ASM-CLEARANCE, AMBER  
111102-02-CHT  
SCREW  
G11-08-12U (EXT) (2)  
CONNECTOR  
58028-01-000 (2)

265 CODES/STANDARDS-CSA/CMVSS  
1B1 CODES/STANDARDS USA  
1B1 265



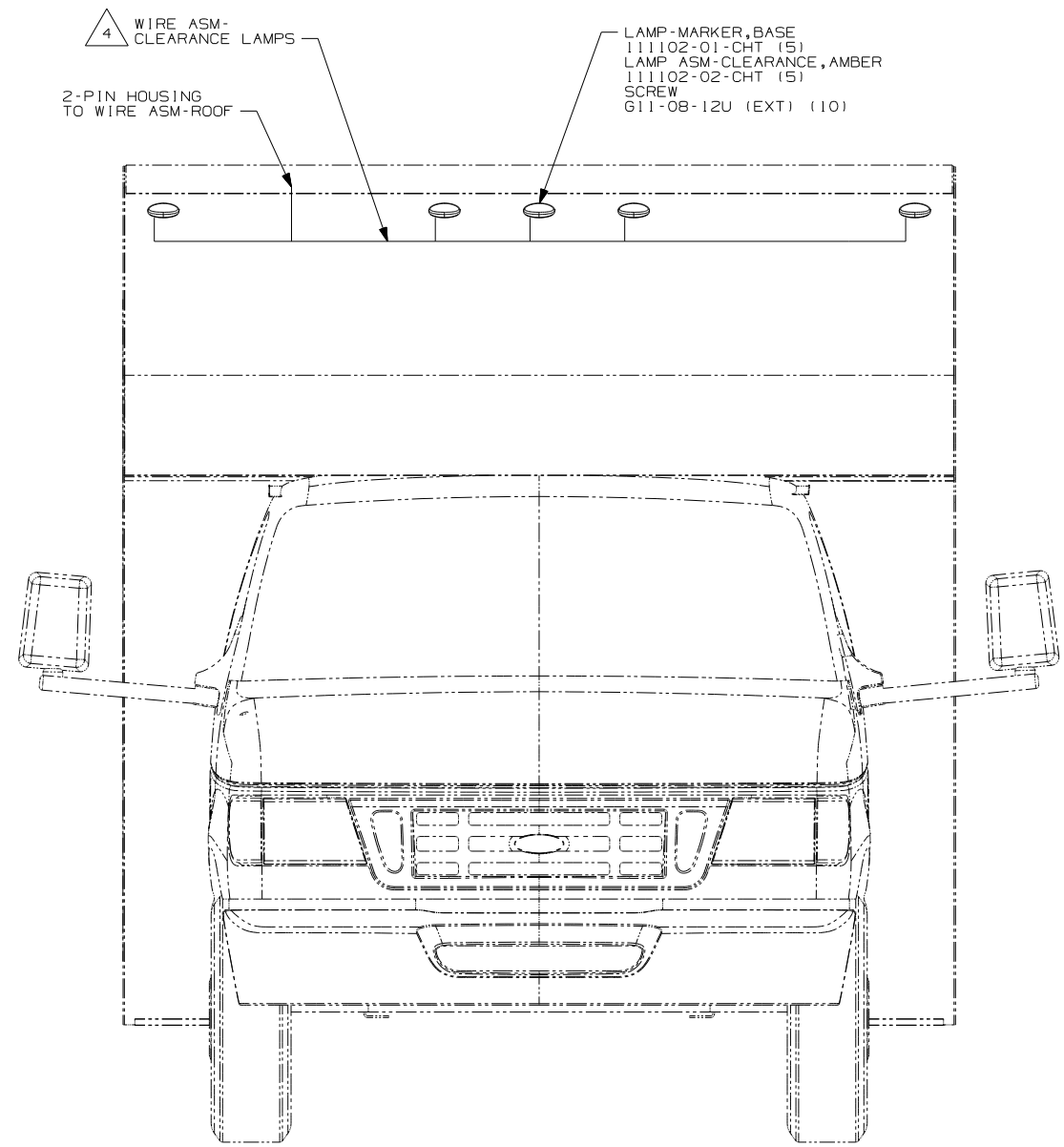
DFTR	ORIG. DATE
CHKR	ALL DIMENSIONS ARE IN MILLIMETERS
P.E.	
M.E.	FIRST USED
DSNR	07 200-SER
UNSPECIFIED TOLERANCES ARE:	MATERIAL:
HOLE DIM (X)	: 3
ONE-PLACE (X.X)	: 1.5
TWO-PLACE (X.XX)	: 0.50
ANGLE	: 1°
THIRD ANGLE PROJECTION	

FOR ELECTRICAL TORQUE SPECIFICATIONS SEE DWG NO. 128783-01-000

FOR ELECTRICAL CALLOUTS SEE DWG NO. 121339-01-000

DO NOT SCALE DRAWING  
TITLE: WIRING INSTL-EXTERIOR LAMPS  
SHEET 1 OF 2 PART NO 156356 REV  
REF: 1 5/15/2007

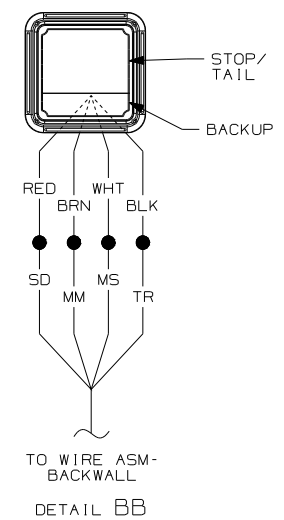
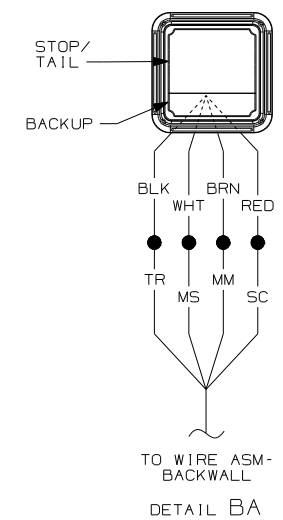
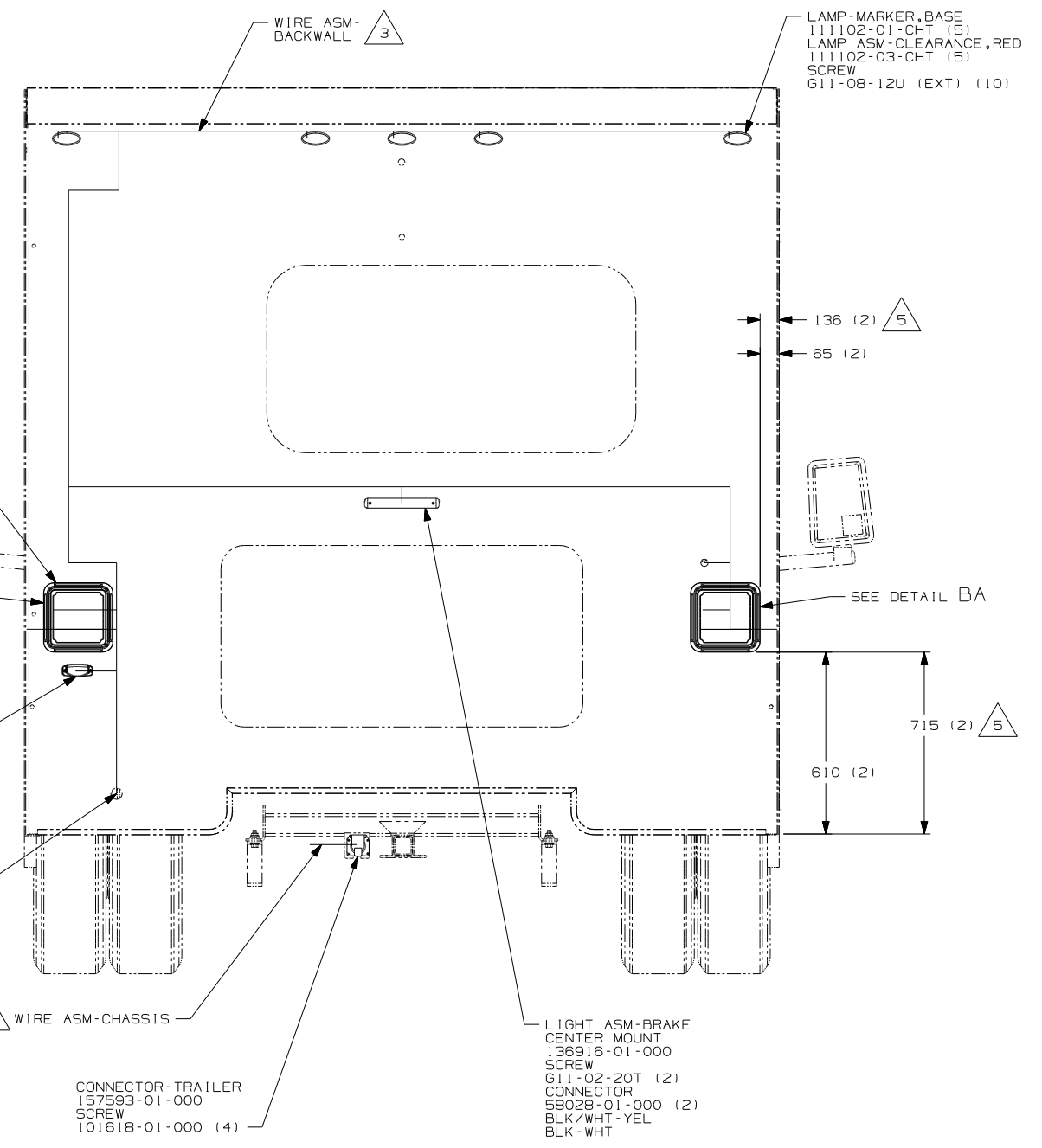
NOTES:  
1 USED ONLY WITH 231C & 229T.



LAMP ASM-STOP/TURN/  
TAIL/BACKUP  
153658-01-CHT (2)  
SCREW  
611-08-12U (8)  
CONNECTOR  
58028-01-000 (8)  
SEALER TAPE  
69640-21-000 (3,4)

BRACKET-LICENSE  
66432-03-000  
SCREW  
667-10-129 (2)  
LIGHT-LICENSE  
66432-02-000  
SCREW  
639-08-12T (EXT) (2)  
CONNECTOR  
58028-01-000 (2)

8-PIN HOUSING TO WIRE ASM-CHASSIS



- 5 LIGHT ASSEMBLIES MOUNTED IN THIS POSITION ON THE 226A.
- 4 LOCATED IN ROOF ASM-FRONT.
- 3 LOCATED IN BACKWALL ASSEMBLY
- 2 SECURE WIRE BELOW COACH WITH CLAMP 10495-01-000 AND SCREW G67-10-12B.

NOTES:  
1. CONNECTOR-PLUG, TRAILER 146246-01-000 TO BE SUPPLIED LOOSE IN OWNERS PACKET WITH TRAILER TOW PACKAGE.

FOR ELECTRICAL TORQUE SPECIFICATIONS SEE DWG NO. 128783-01-000

FOR ELECTRICAL CALLOUTS SEE DWG NO. 121339-01-000

265 CODES/STANDARDS-CSA/CMVSS  
1B1 CODES/STANDARDS USA

FIRST USED	
07 200-SER	
DO NOT SCALE DRAWING	
TITLE: WIRING INSTL-EXTERIOR LAMPS	
SHEET 2	PART NO 156356 REV