



**DANGER**

**Danger of electrical shock, burns or death.** Always remove all power sources before attempting any repair, service or diagnostic work. Power can be present from shore power, generator, inverter or battery. All power sources must be disabled and secured before performing any service.

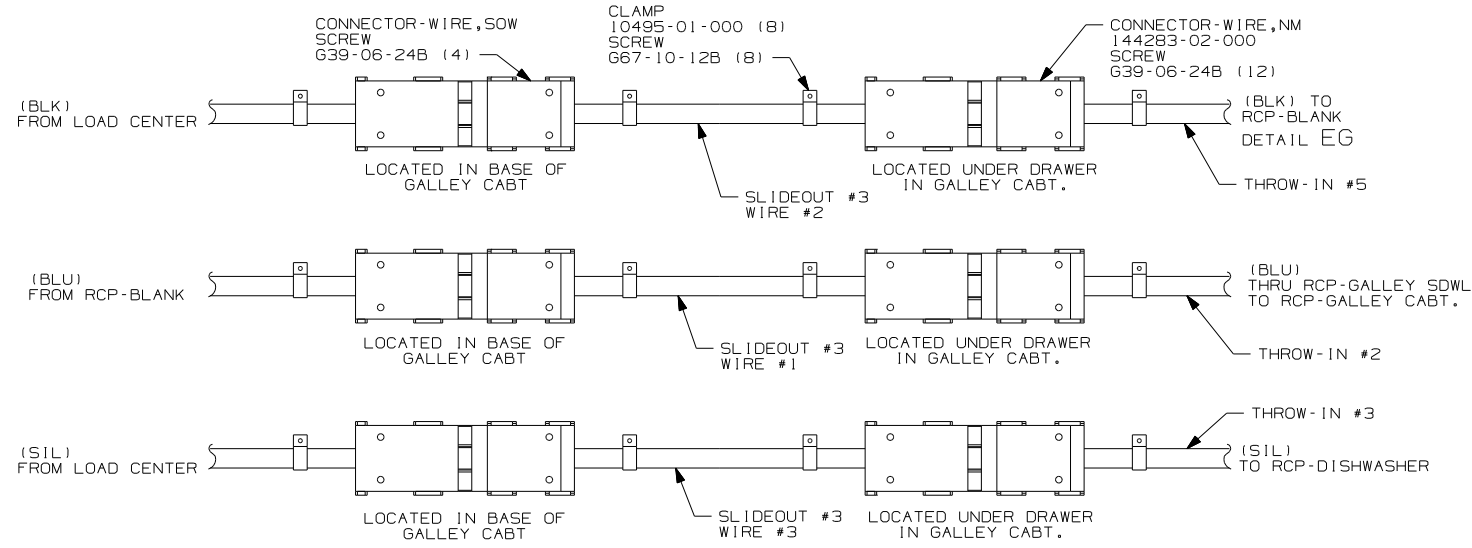


**CAUTION**

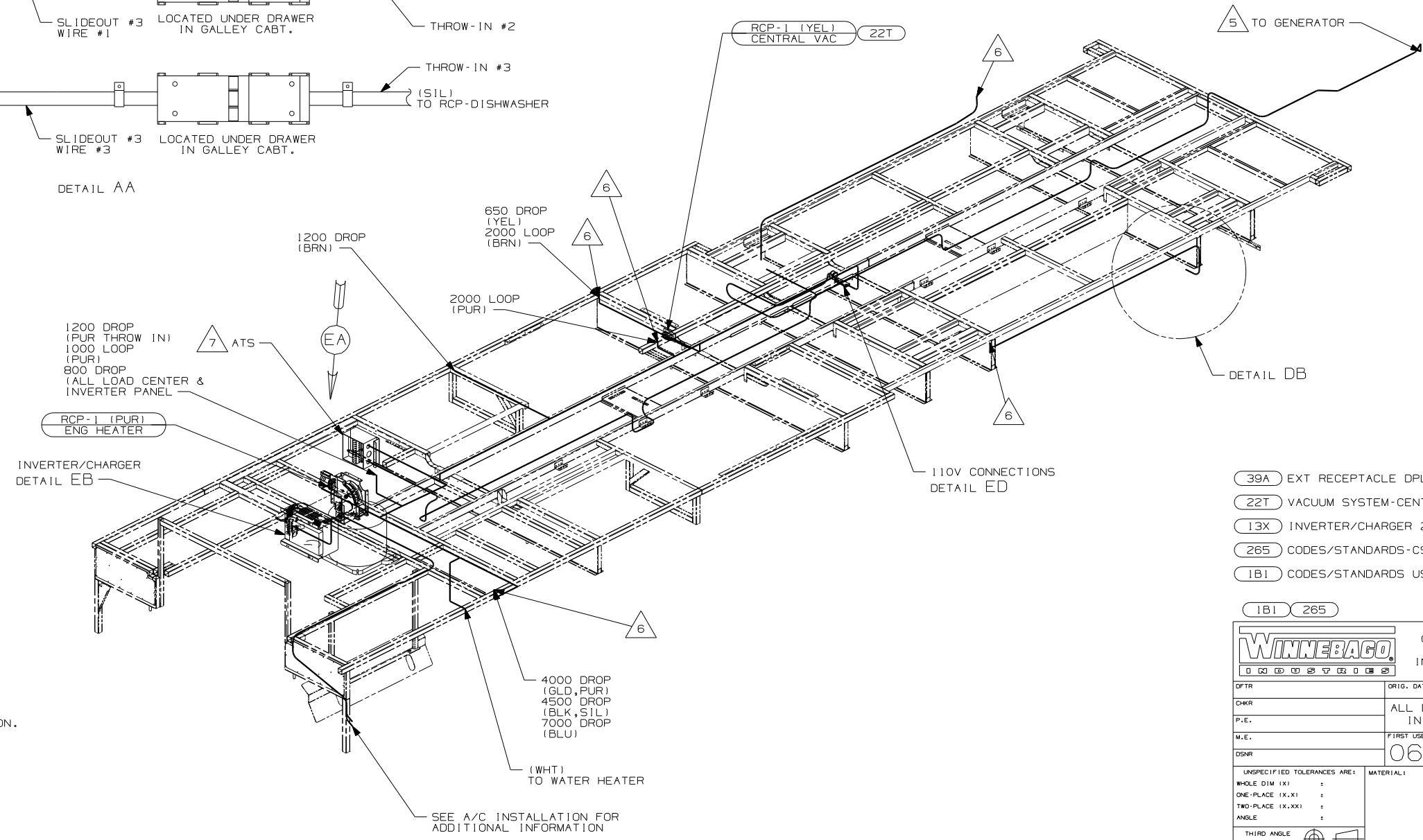
If you lack the skills, tools or equipment to perform diagnostic or repair work leave such work to an authorized Winnebago Industries dealer or other qualified shop.

DRAWING NO.	FEATURE
152889-01	-----
152889-14	(1B1) (78J) (13X)
152889-18	(265) (78J) (13X)

REV	ZONE	REVISION RECORD	DATE	DFTR-ORIG
B	S3	ADDED BUMPER CALLOUTS FOR TV, VIEW CA	10/13/04	2245
C	---	MULTIPLE CHANGES	11/19/04	3728-4118
D	S1,2,5	MULTIPLE CHANGES	02/02/05	2245-4118
E	S4	CLARIFIED RCP CALLOUTS ON DETAIL DB	02/07/05	2245-4118
F	S3	CHANGE BDRM TV	04/20/05	3728-4118
G	S3	REMOVED PLATE MOUNTING, TV 1560068 & SCREW G67-10-12U	05/20/05	2245-4118
H	S3	ADDED LABEL 158542-01 AND FEATURE 21M	11/30/05	2245-3904



DETAIL AA



- (39A) EXT RECEPTACLE DPLX 120VAC
- (22T) VACUUM SYSTEM-CENTRAL
- (13X) INVERTER/CHARGER 2.0 KW
- (265) CODES/STANDARDS-CSA/CMVSS
- (1B1) CODES/STANDARDS USA

- 7 SEE LOAD CENTER/ATS ASM FOR ADDITIONAL INFORMATION.
- 6 TO ABOVE FLOOR.
- 5 SEE GENERATOR INSTALLATION FOR ADDITIONAL INFORMATION.
- 4 SEE EXT ENT CTR COMPT FOR ADDITIONAL INFORMATION.

3. WIRES THAT REST ON WIRE TRAYS ARE TO BE TIED DOWN WITH WIRE TIE 8343-04-000.
2. CLAMP TO FLOOR SUPPORT TUBES AS NECESSARY WITH CLAMP 10497-01-000.
1. ALL WIRES TO BE SECURED WITH CLAMP 10495 OR 10497 OR WIRE TIE 8343 OR 108046 EVERY 600MM, USE SCREW G67-XX-XXX OR G56-XX-XXX AS APPROPRIATE FOR INSTALLATION.

FOR ELECTRICAL TORQUE SPECIFICATIONS SEE DWG NO. 128783-01-000

FOR ELECTRICAL CALLOUTS SEE DWG NO. 121339-01-000

**WINNEBAGO** INDUSTRIES, INC. COPYRIGHT 2004

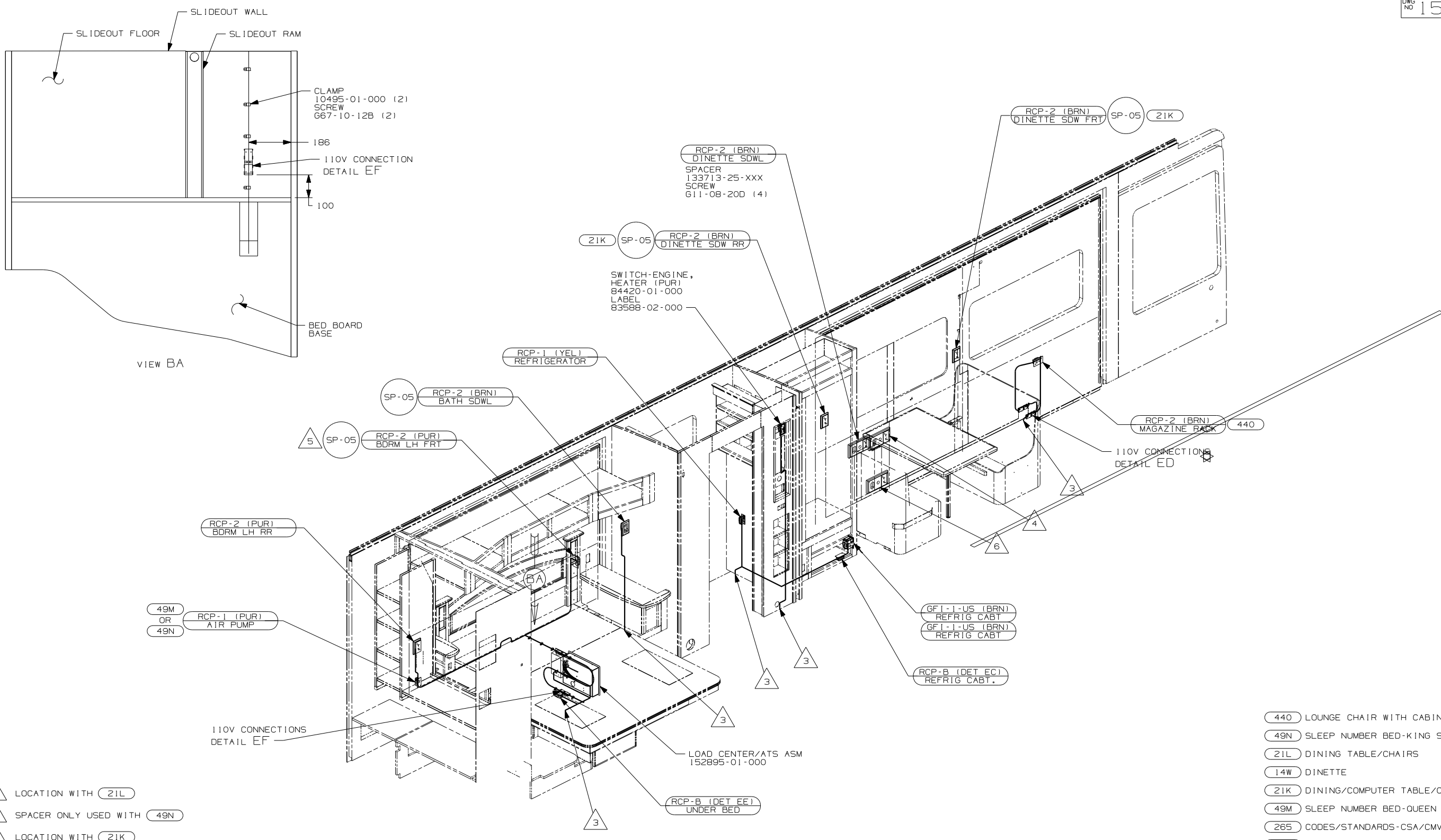
DFTR	ORIG. DATE
CHKR	ALL DIMENSIONS ARE IN MILLIMETERS
P.E.	FIRST USED
M.E.	06 S40KD
DSNR	
UNSPECIFIED TOLERANCES ARE:	MATERIAL:
WHOLE DIM (X)	:
ONE-PLACE (X.X)	:
TWO-PLACE (X.XX)	:
ANGLE	:
THIRD ANGLE PROJECTION	

DO NOT SCALE DRAWING

TITLE: WIRING INSTL-BODY 110V

SHEET 1 of 5 PART NO 152889

REF: 1 12/1/2005



- 6 LOCATION WITH 21L
- 5 SPACER ONLY USED WITH 49N
- 4 LOCATION WITH 21K
- 3 WIRES ROUTE BELOW FLOOR IN THIS AREA.

2. ALL 110V WIRES TO BE CLAMPED WITH CLAMP 10497-05-000 WITHIN 200mm OF OUTLET BOXES, USE SCREW G67-10-12B.

1. ALL WIRES TO BE SECURED WITH CLAMP 10495 OR 10497 OR WIRE TIE 8343 OR 108046 EVERY 600MM, USE SCREW G67-XX-XXX OR G56-XX-XXX AS APPROPRIATE FOR INSTALLATION.

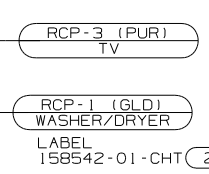
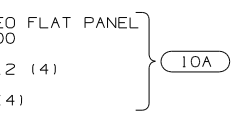
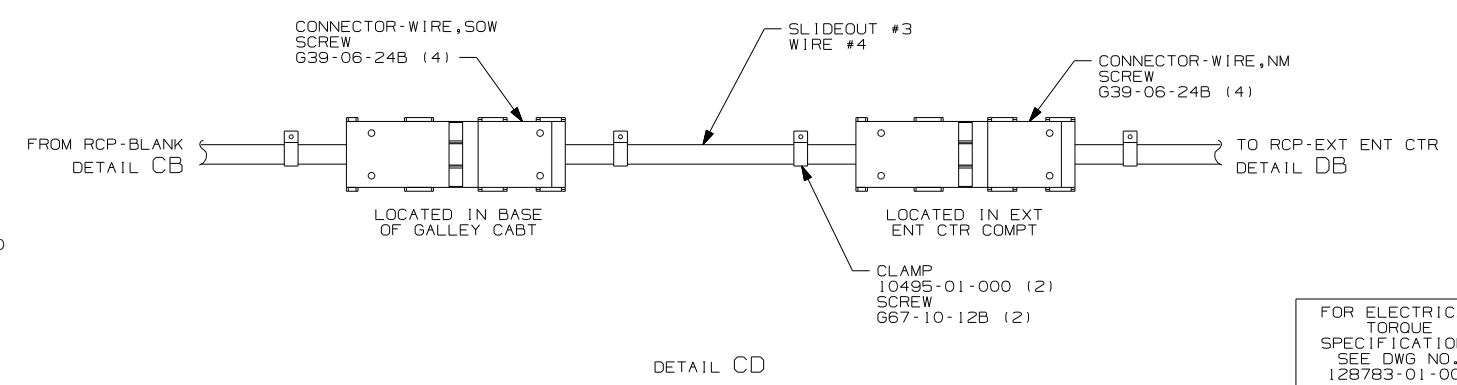
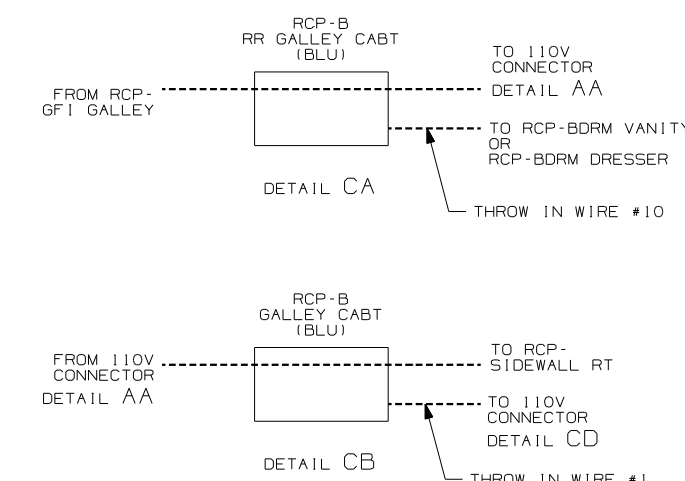
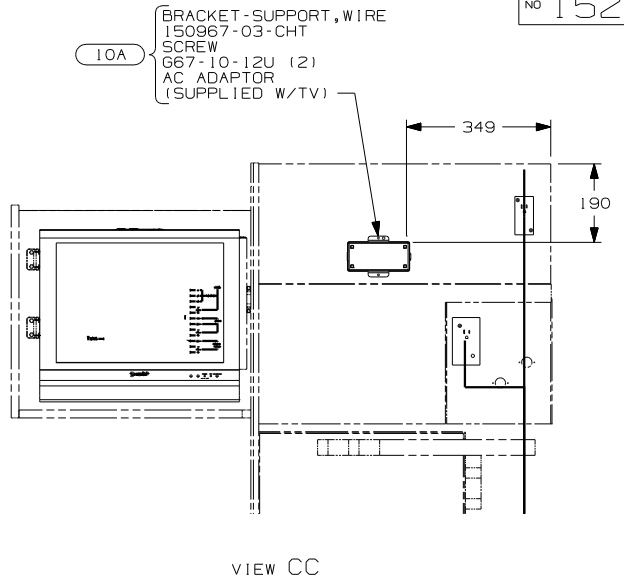
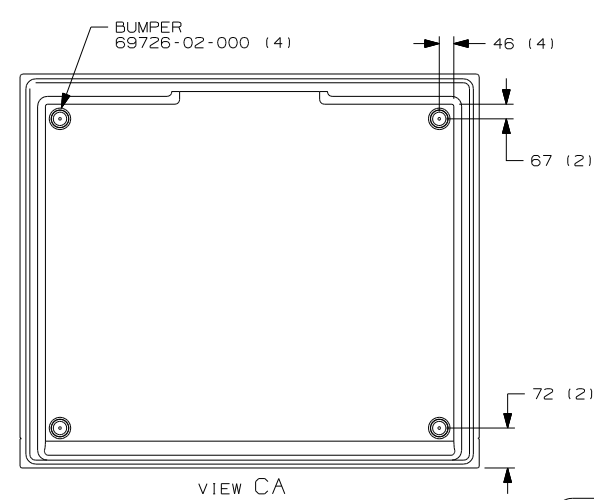
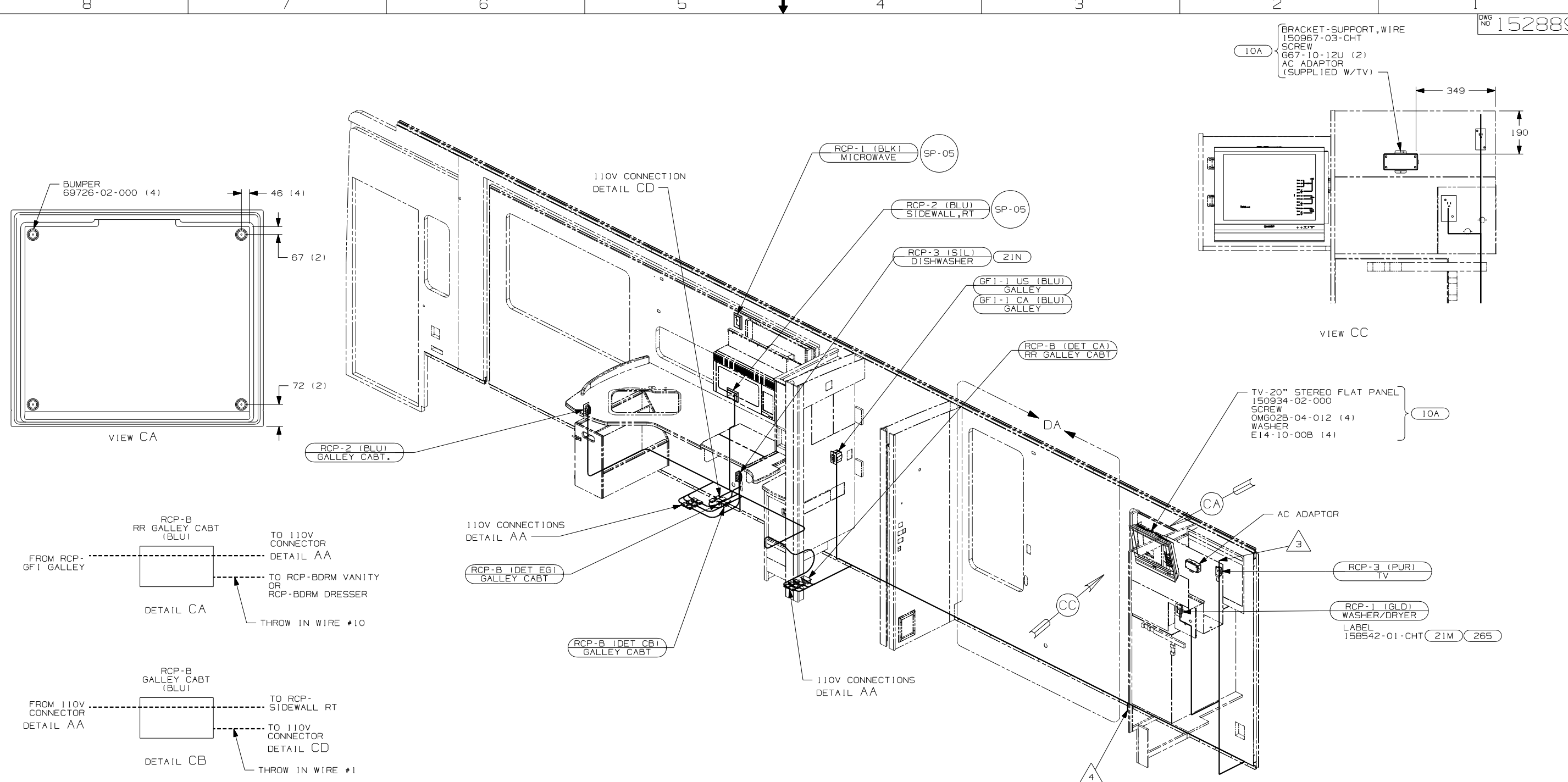
NOTES:

- 440 LOUNGE CHAIR WITH CABINET
- 49N SLEEP NUMBER BED-KING SIZE
- 21L DINING TABLE/CHAIRS
- 14W DINETTE
- 21K DINING/COMPUTER TABLE/CHAIRS
- 49M SLEEP NUMBER BED-QUEEN SIZE
- 265 CODES/STANDARDS-CSA/CMVSS
- 1B1 CODES/STANDARDS USA

FIRST USED	
06 S40KD	
DO NOT SCALE DRAWING	
TITLE:	
WIRING INSTL-BODY 110V	
SHEET 2	PART NO 152889

FOR ELECTRICAL TORQUE SPECIFICATIONS SEE DWG NO. 128783-01-000

FOR ELECTRICAL CALLOUTS SEE DWG NO. 121339-01-000



- 4 TO BELOW FLOOR.
- 3 WIRE FROM ROOF ASM.

2. ALL 110V WIRES TO BE CLAMPED WITH CLAMP 10497-05-000 WITHIN 200mm OF OUTLET BOXES, USE SCREW G67-10-12B.

1. ALL WIRES TO BE SECURED WITH CLAMP 10495 OR 10497 OR WIRE TIE 8343 OR 108046 EVERY 600MM, USE SCREW G67-XX-XXX OR G56-XX-XXX AS APPROPRIATE FOR INSTALLATION.

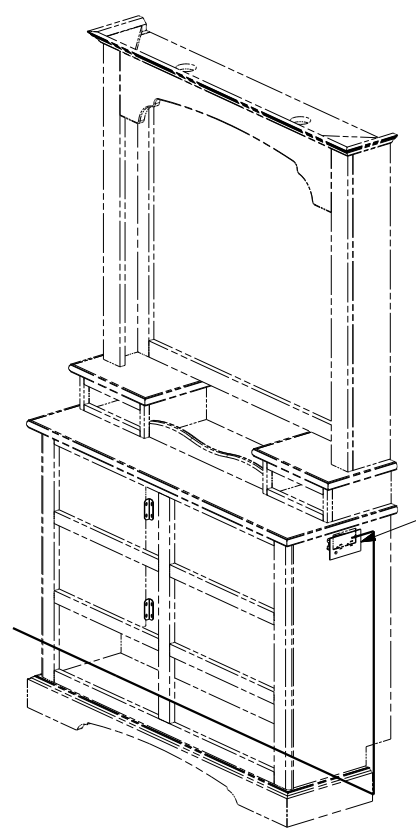
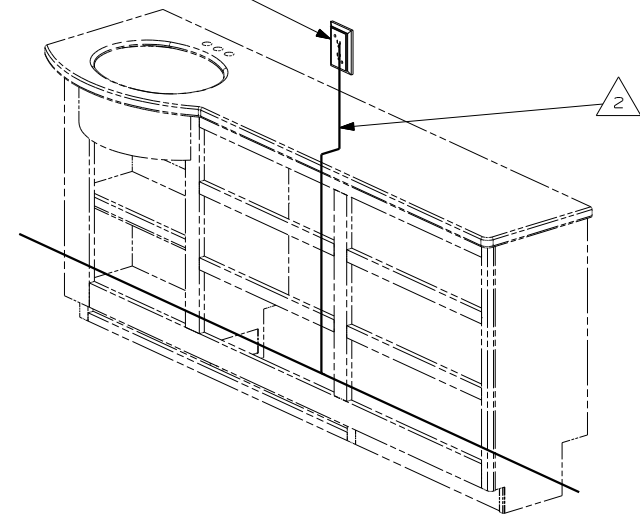
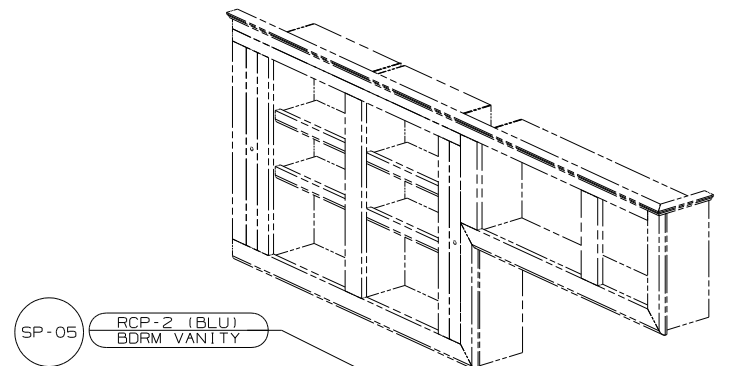
NOTES:

- 21M WASHER/DRYER PREP
- 10A TV (REAR) -20\"/>

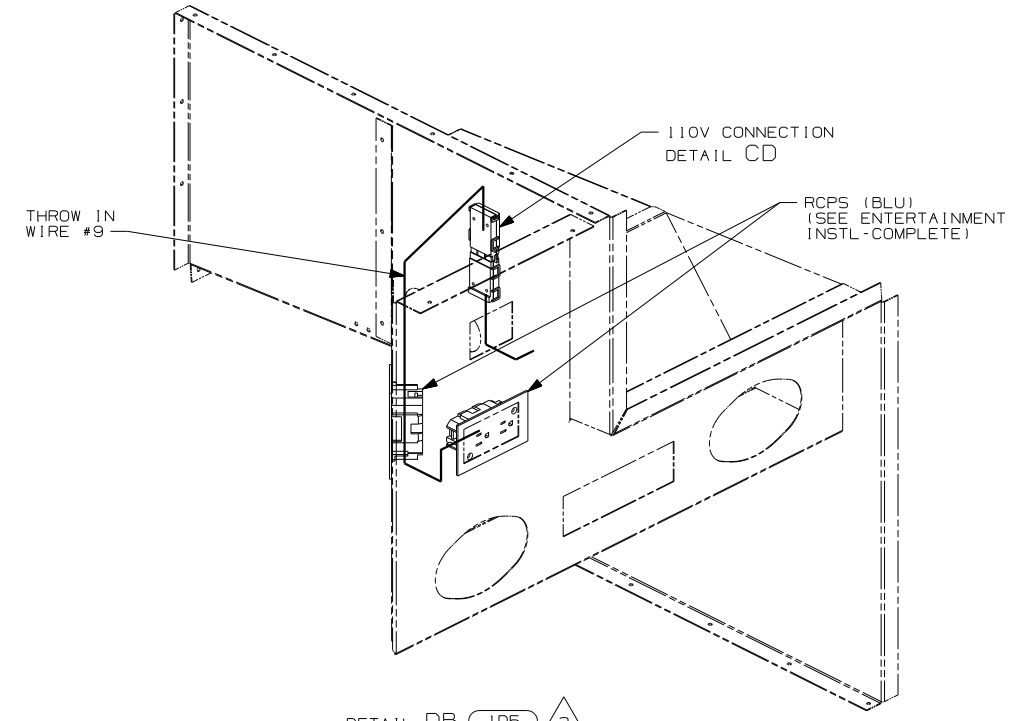
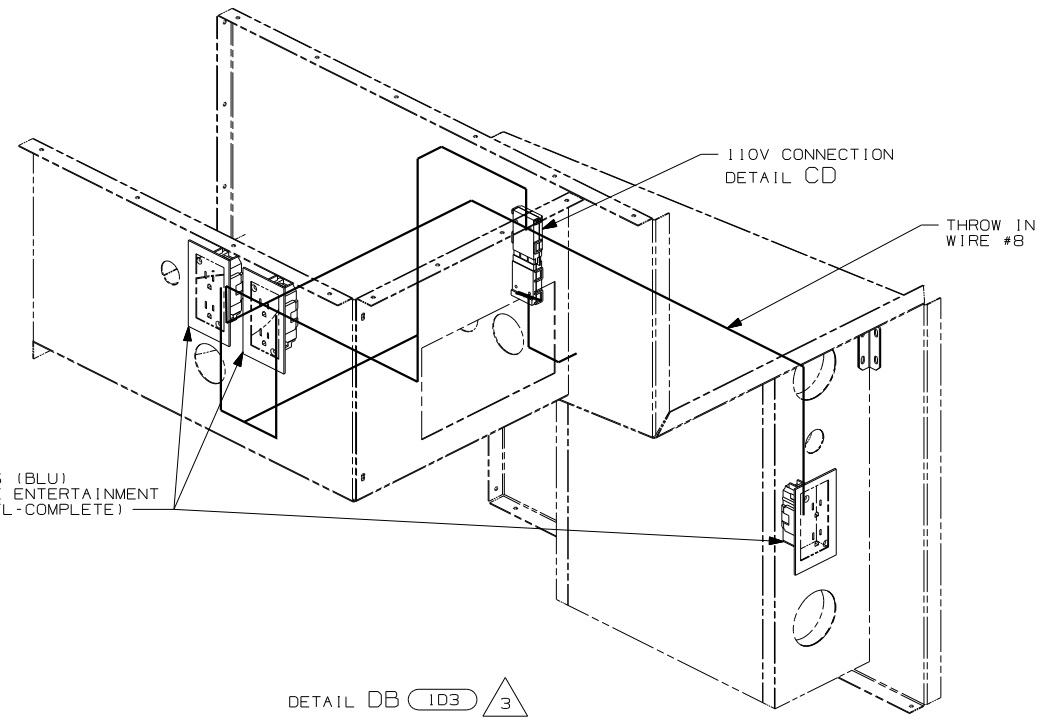
FIRST USED	
06 S40KD	
DO NOT SCALE DRAWING	
TITLE: WIRING INSTL-BODY 110V	
SHEET 3	PART NO 152889

FOR ELECTRICAL TORQUE SPECIFICATIONS SEE DWG NO. 128783-01-000

FOR ELECTRICAL CALLOUTS SEE DWG NO. 121339-01-000



RCP-2 (BLU) BDRM DRESSER



- 3 SEE ENT CTR COMPLETE FOR ADDITIONAL INFORMATION.
- 2 ROUTE WIRE IN SIDEWALL DURING INSTALLATION.

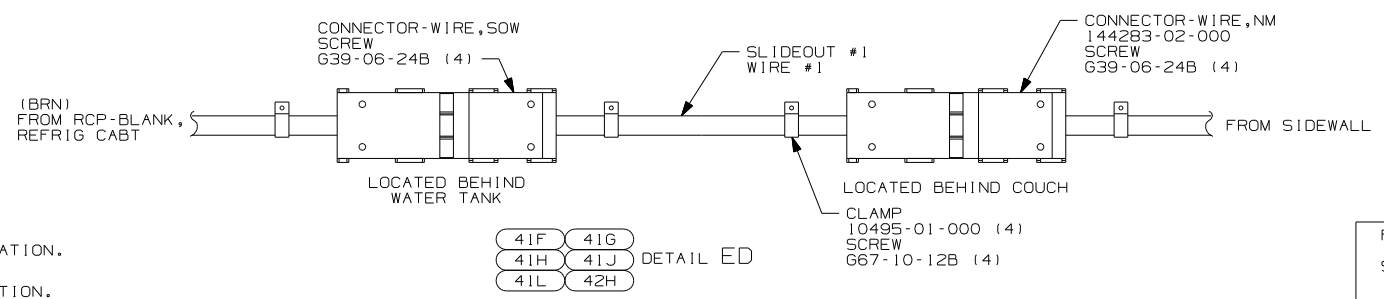
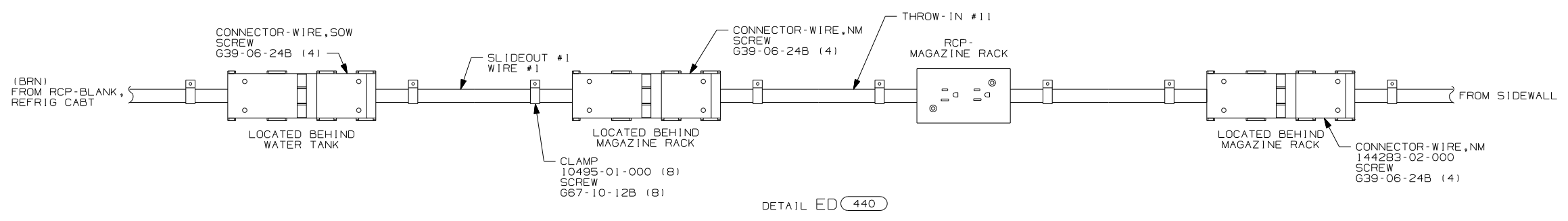
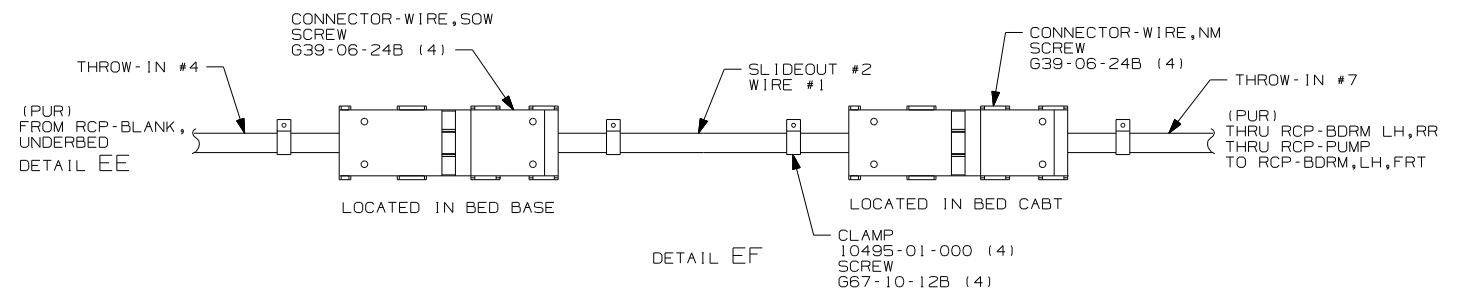
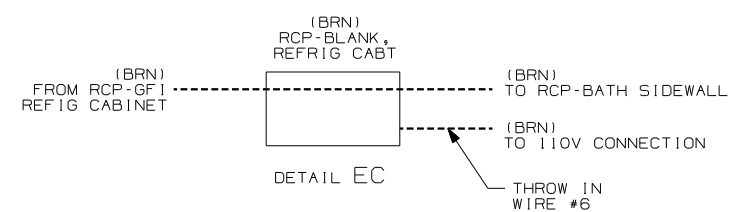
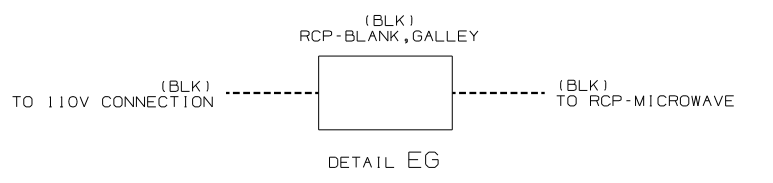
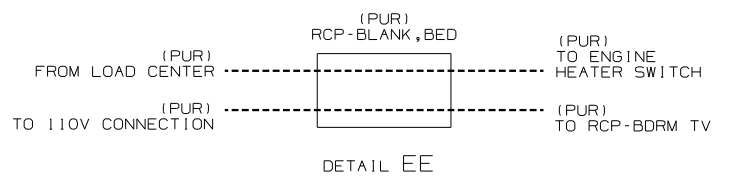
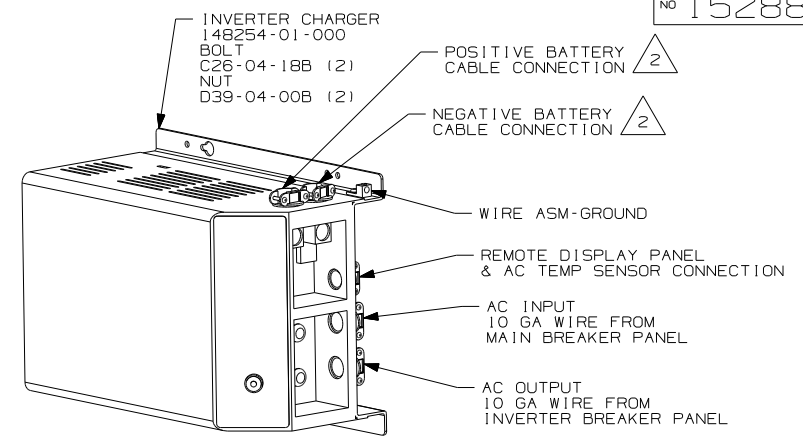
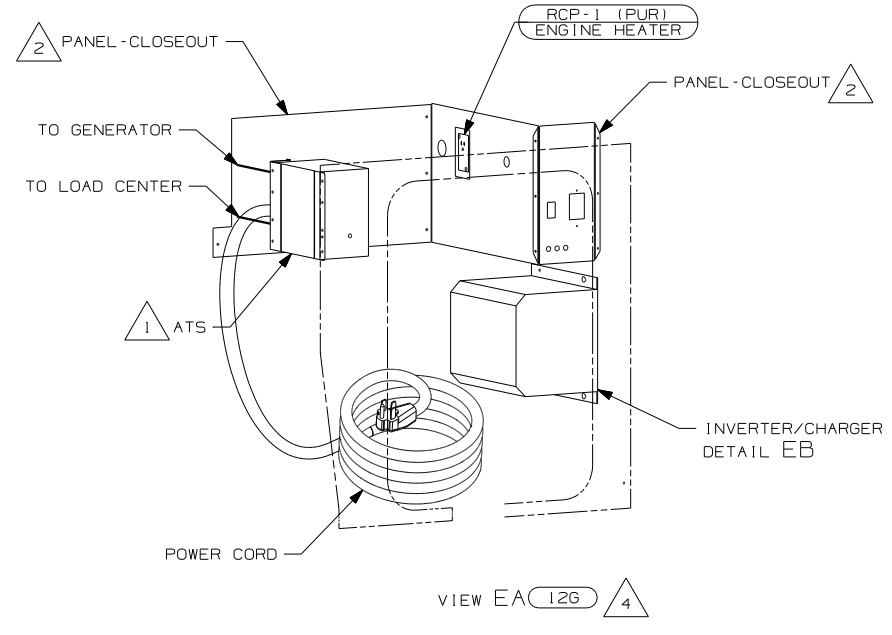
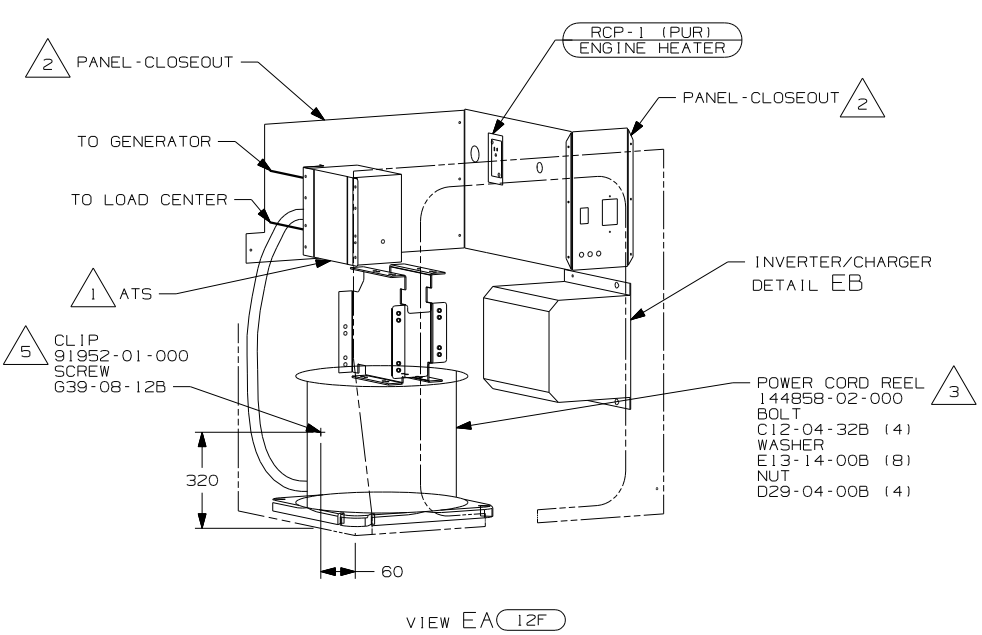
NOTES:  
1. ALL WIRES TO BE SECURED WITH CLAMP 10495 OR 10497 OR WIRE TIE 8343 OR 108046 EVERY 600MM, USE SCREW G67-XX-XXX OR G56-XX-XXX AS APPROPRIATE FOR INSTALLATION.

- 43W CABINET-LAVATORY
- 43V CABINET-CHEST OF DRAWERS
- 265 CODES/STANDARDS-CSA/CMVSS
- 1B1 CODES/STANDARDS USA

FIRST USED	06 S40KD
TITLE	DO NOT SCALE DRAWING
TITLE	WIRING INSTL-BODY 110V
SHEET 4	PART NO 152889

FOR ELECTRICAL TORQUE SPECIFICATIONS SEE DWG NO. 128783-01-000

FOR ELECTRICAL CALLOUTS SEE DWG NO. 121339-01-000



- NOTES:
- 5 FASTEN CLIP TO INSIDE LEFT COMPARTMENT WALL.
  - 4 PLUG POWER CORD REEL MOUNTING HOLES WITH PLUG-PLASTIC 81211-01-000 (4)
  - 3 INSERT BOLT FROM BOTTOM OF COMPARTMENT.
  - 2 SEE WIRING INSTL-CHASSIS FOR ADDITIONAL INFORMATION.
  - 1 SEE LOAD CENTER/ATS ASM FOR ADDITIONAL INFORMATION.

- 41F 41G  
41H 41J  
41L 42H

FOR ELECTRICAL TORQUE SPECIFICATIONS SEE DWG NO. 128783-01-000

FOR ELECTRICAL CALLOUTS SEE DWG NO. 121339-01-000

- (440) LOUNGE CHAIR WITH CABINET
- (42H) RESTEASY-DUAL CONTROL
- (41L) RESTEASY DUAL CTRL ULTRALEA
- (41J) RESTEASY DUAL CONTROL LEATHR
- (41H) RESTEASY, ULTRALEATHER
- (41G) RESTEASY, LEATHER FACED
- (41F) REST EASY MULTI POS LOUNGE
- (12G) POWER CORD REEL -WITHOUT
- (12F) POWER CORD REEL
- (265) CODES/STANDARDS - CSA/CMVSS
- (1B1) CODES/STANDARDS - USA

FIRST USED

06 S40KD

DO NOT SCALE DRAWING

TITLE: WIRING INSTL-BODY 110V

SHEET 5 PART NO 152889

12/1/2005