



DANGER

Danger of electrical shock, burns or death. Always remove all power sources before attempting any repair, service or diagnostic work. Power can be present from shore power, generator, inverter or battery. All power sources must be disabled and secured before performing any service.

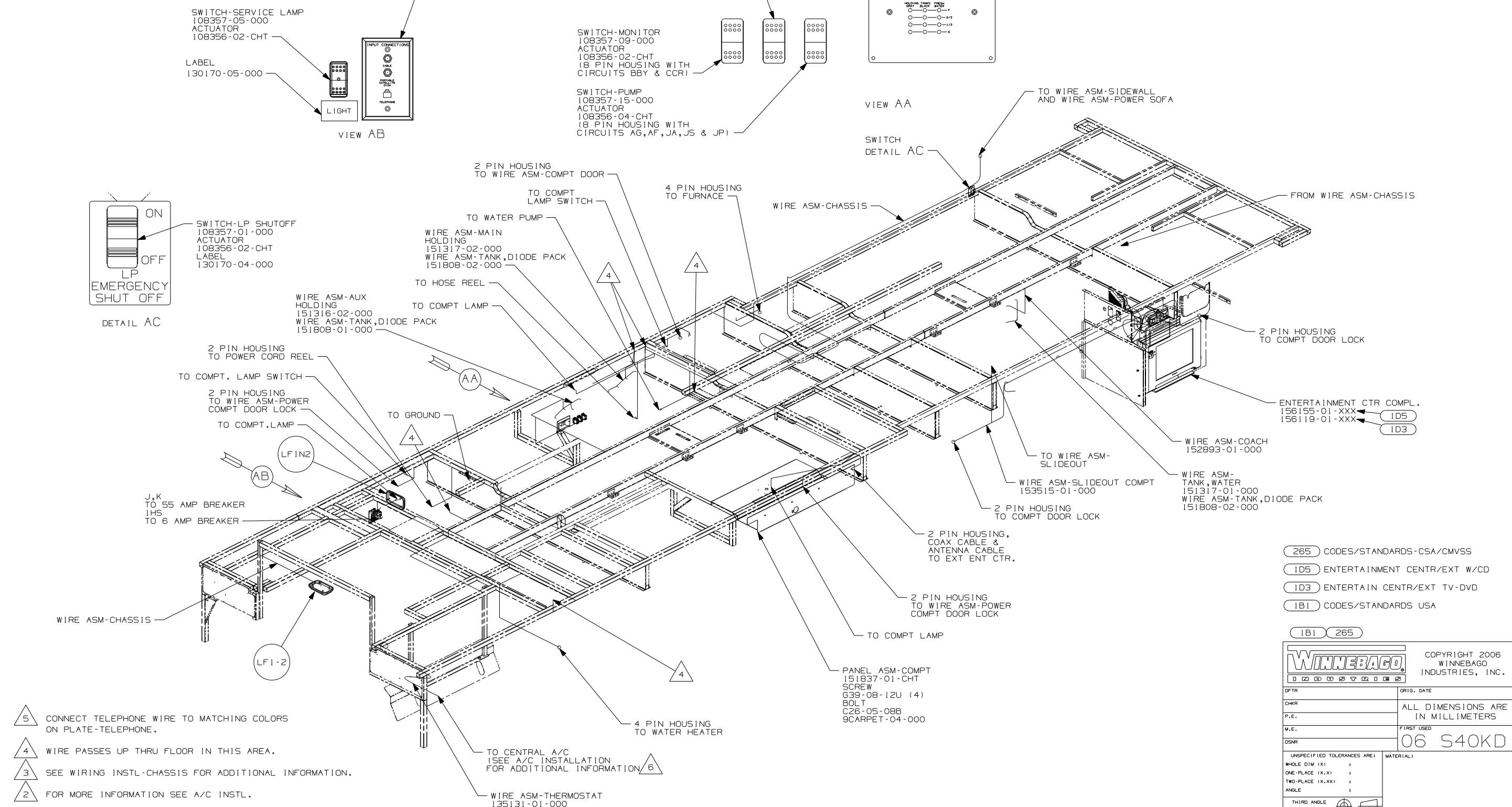


CAUTION

If you lack the skills, tools or equipment to perform diagnostic or repair work leave such work to an authorized Winnebago Industries dealer or other qualified shop.

DRAWING NO.	----
152888-01	WIN
152888-02	ITA

RELEASE	REV/DATE	OWG NO	152888
REV ZONE	REVISION RECORD	DATE	DFTR-ORIG



- 5. CONNECT TELEPHONE WIRE TO MATCHING COLORS ON PLATE-TELEPHONE.
- 4. WIRE PASSES UP THRU FLOOR IN THIS AREA.
- 3. SEE WIRING INSTL-CHASSIS FOR ADDITIONAL INFORMATION.
- 2. FOR MORE INFORMATION SEE A/C INSTL.

1. ALL WIRES TO BE SECURED WITH CLAMP 10495 OR 10497 OR WIRE TIE 8343 OR 108046 EVERY 600MM, USE SCREW G67-XX-XXX OR G56-XX-XXX AS APPROPRIATE FOR INTALLATION.

NOTES:

265	CODES/STANDARDS-CSA/CMVSS
ID5	ENTERTAINMENT CENTR/EXT W/CD
ID3	ENTERTAIN CENTR/EXT TV-DVD
1B1	CODES/STANDARDS USA
1B1	265

WINNEBAGO COPYRIGHT 2006 WINNEBAGO INDUSTRIES, INC.

DFTR	ORIG. DATE
CHKR	ALL DIMENSIONS ARE IN MILLIMETERS
P.E.	
M.E.	FIRST USED
DSNR	06 S40KD

UNSPECIFIED TOLERANCES ARE: MATERIAL:

WHOLE DIM (X)	:
ONE-PLACE (X.X)	:
TWO-PLACE (X.XX)	:
ANGLE	:

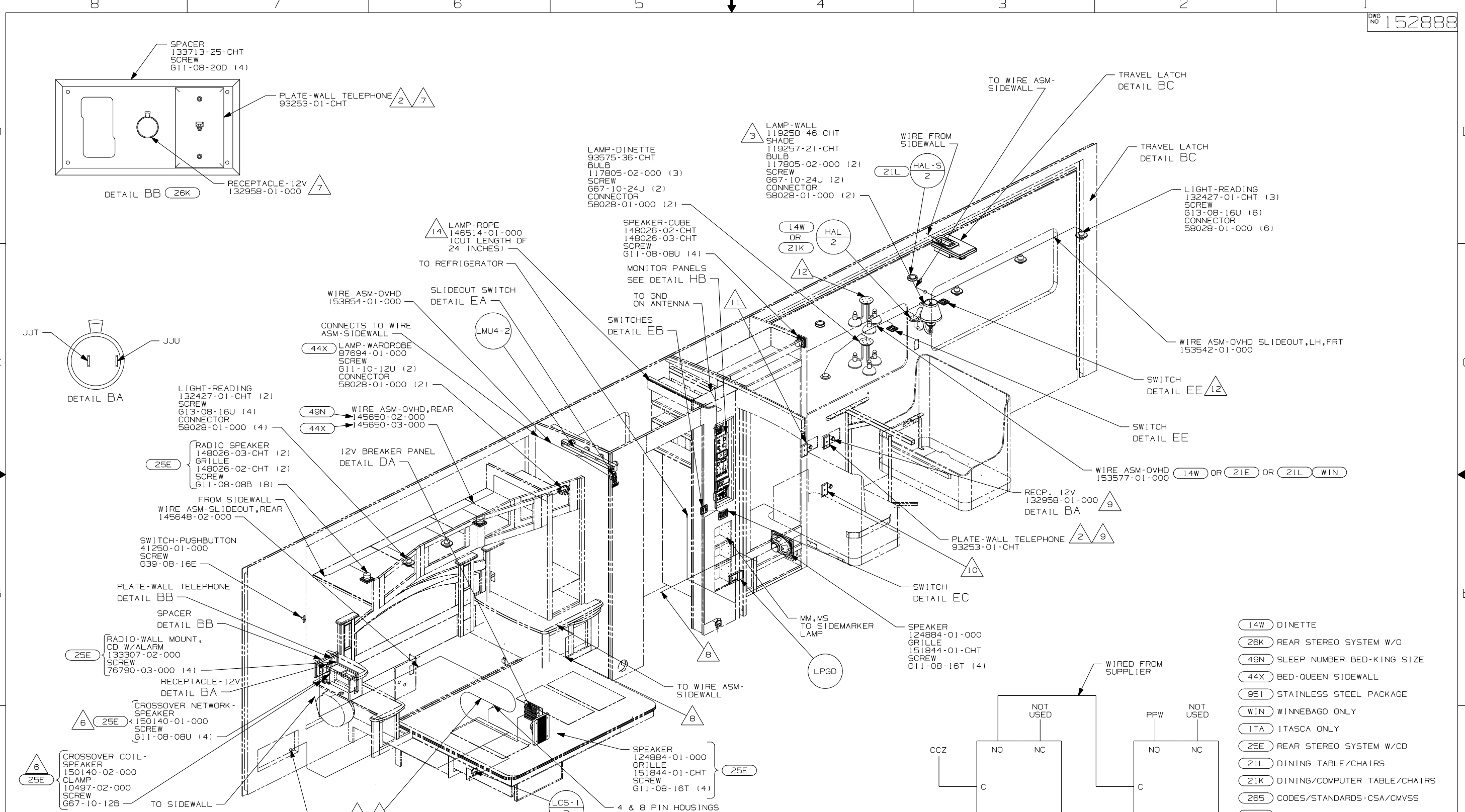
THIRD ANGLE PROJECTION

DO NOT SCALE DRAWING

TITLE: WIRING INSTL-BODY, 12V

SHEET 1 OF 8 PART NO 152888 REV

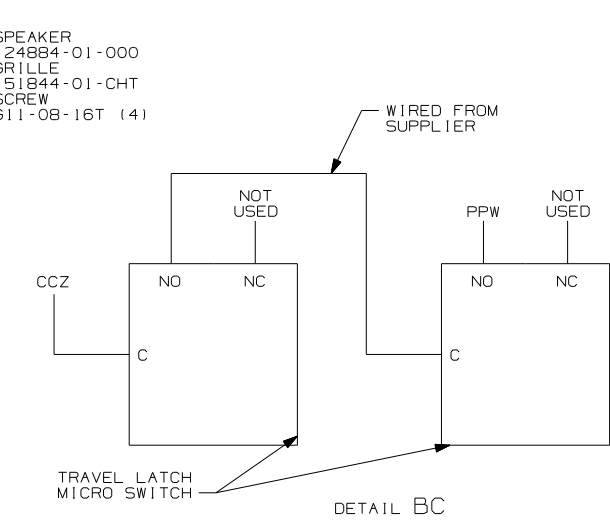
REF: 1 6/15/2006



NOTES:

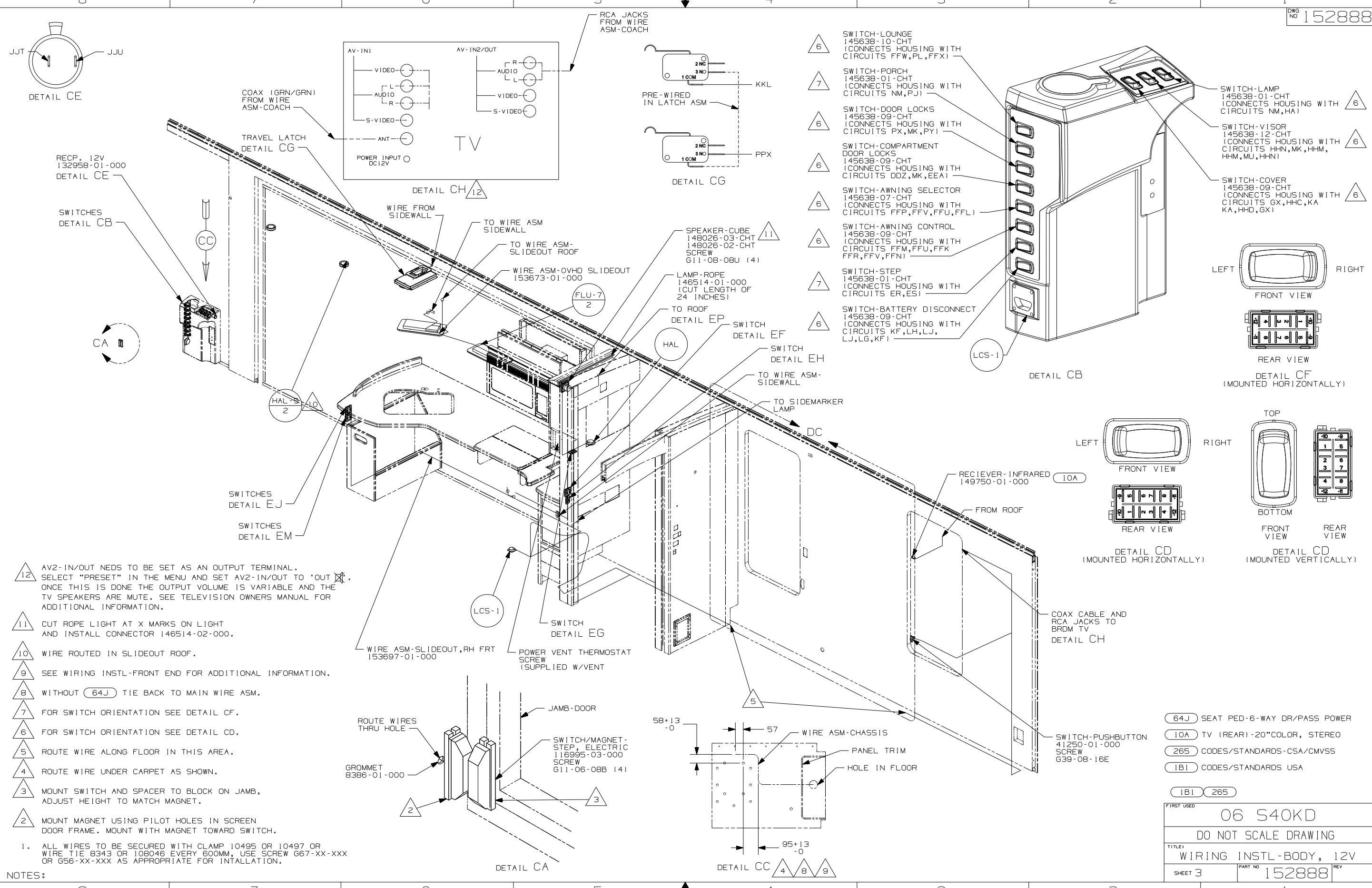
- ALL WIRES TO BE SECURED WITH CLAMP 10495 OR 10497 OR WIRE TIE 8343 OR 108046 EVERY 600MM, USE SCREW 667-XX-XXX OR G56-XX-XXX AS APPROPRIATE FOR INSTALLATION.

- 3 MOUNT LAMP SO THE TOP OF THE SHADE IS 150 FROM BOTTOM OF OVHD CABINET.
- 2 CONNECT TELEPHONE WIRES TO MATCHING COLORS ON PLATE TELEPHONE.
- 4 SEE WIRING INSTL-BODY, 110V FOR ROUTING & CLAMPING INFORMATION.
- 8 WIRES PASS UP THRU FLOOR IN THIS AREA.
- 7 THIS COMPONENT MOVES TO RADIO CABINET WITH 25E.
- 6 MOUNT BOX AND COIL BEHIND REAR STEREO TO SLIDEOUT WALL.
- 12 LOCATION WITH 21L.
- 11 LOCATION WITH 14W.
- 10 LOCATION WITH 21L.
- 9 LOCATION WITH 21K.



- 14W DINETTE
- 26K REAR STEREO SYSTEM W/O
- 49N SLEEP NUMBER BED-KING SIZE
- 44X BED-QUEEN SIDEWALL
- 951 STAINLESS STEEL PACKAGE
- WIN WINNEBAGO ONLY
- 1TA ITASCA ONLY
- 25E REAR STEREO SYSTEM W/CD
- 21L DINING TABLE/CHAIRS
- 21K DINING/COMPUTER TABLE/CHAIRS
- 265 CODES/STANDARDS-CSA/CMVSS
- 1B1 CODES/STANDARDS USA
- 181 265

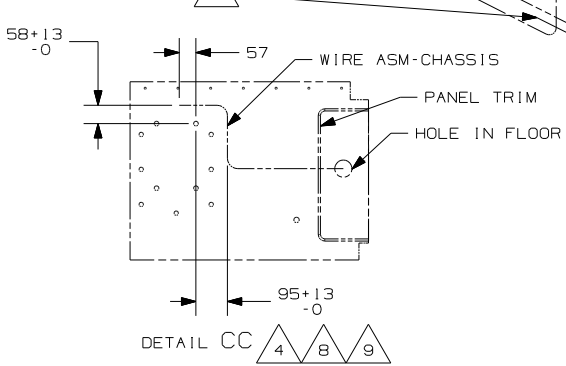
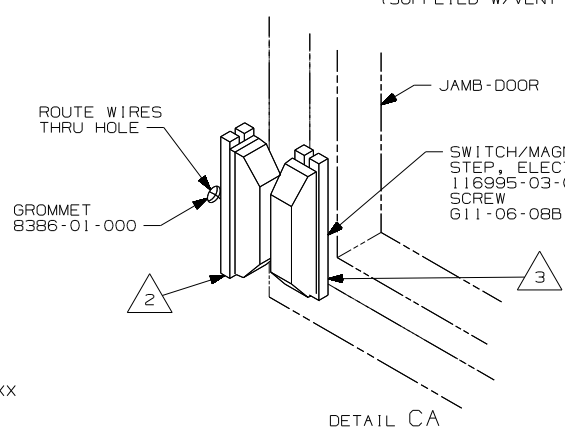
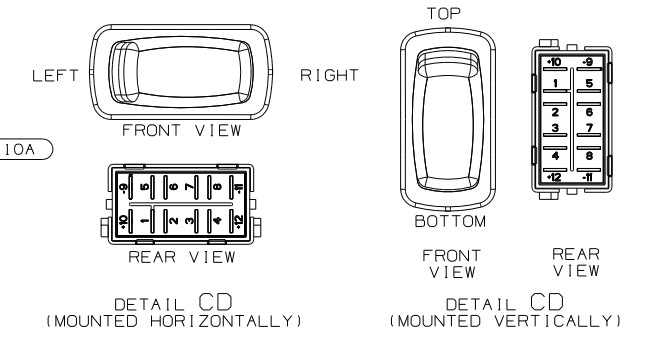
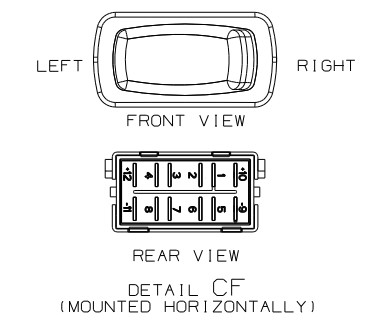
FIRST USED	06 S40KD	
TITLE:	DO NOT SCALE DRAWING	
	WIRING INSTL-BODY, 12V	
SHEET 2	PART NO	152888
	REV	



- 12 AV2-IN/OUT NEEDS TO BE SET AS AN OUTPUT TERMINAL. SELECT "PRESET" IN THE MENU AND SET AV2-IN/OUT TO 'OUT'. ONCE THIS IS DONE THE OUTPUT VOLUME IS VARIABLE AND THE TV SPEAKERS ARE MUTE. SEE TELEVISION OWNERS MANUAL FOR ADDITIONAL INFORMATION.
- 11 CUT ROPE LIGHT AT X MARKS ON LIGHT AND INSTALL CONNECTOR 146514-02-000.
- 10 WIRE ROUTED IN SLIDEOUT ROOF.
- 9 SEE WIRING INSTL-FRONT END FOR ADDITIONAL INFORMATION.
- 8 WITHOUT (64J) TIE BACK TO MAIN WIRE ASM.
- 7 FOR SWITCH ORIENTATION SEE DETAIL CF.
- 6 FOR SWITCH ORIENTATION SEE DETAIL CD.
- 5 ROUTE WIRE ALONG FLOOR IN THIS AREA.
- 4 ROUTE WIRE UNDER CARPET AS SHOWN.
- 3 MOUNT SWITCH AND SPACER TO BLOCK ON JAMB, ADJUST HEIGHT TO MATCH MAGNET.
- 2 MOUNT MAGNET USING PILOT HOLES IN SCREEN DOOR FRAME. MOUNT WITH MAGNET TOWARD SWITCH.

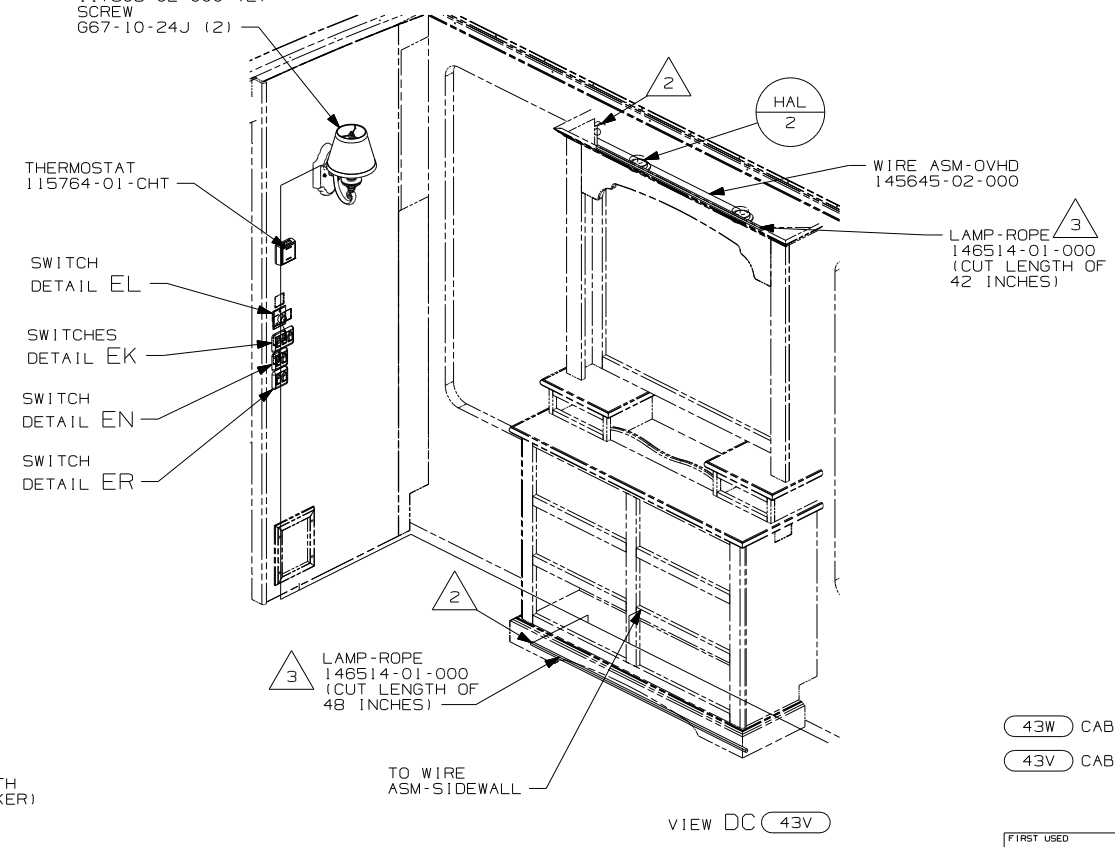
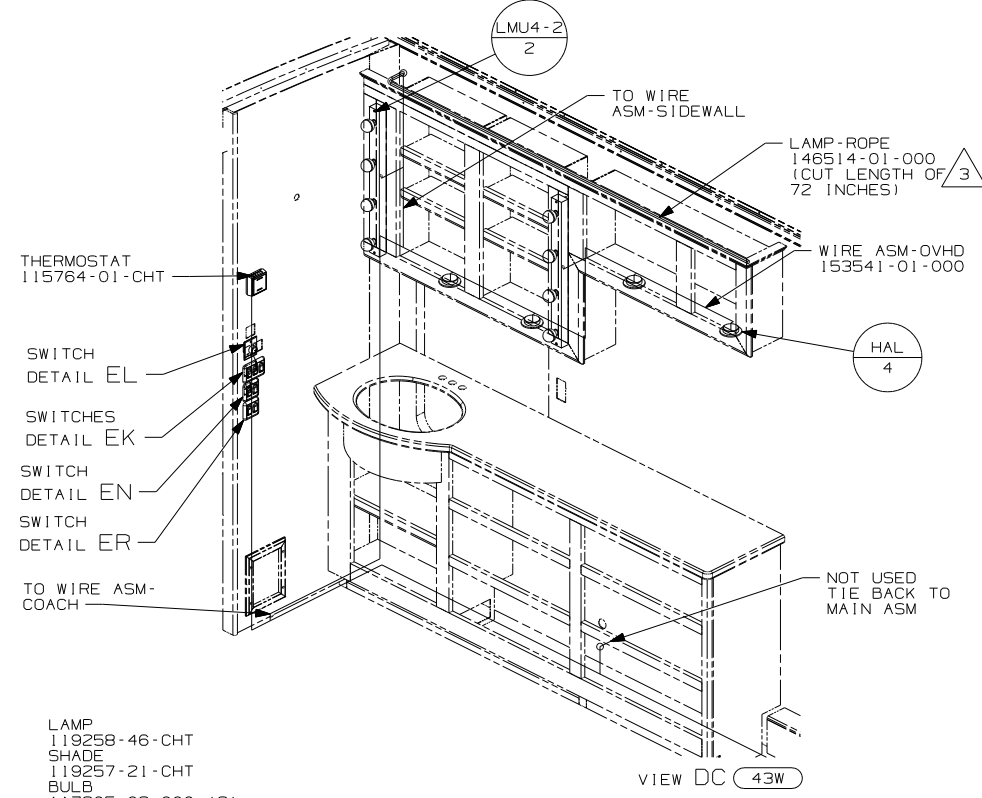
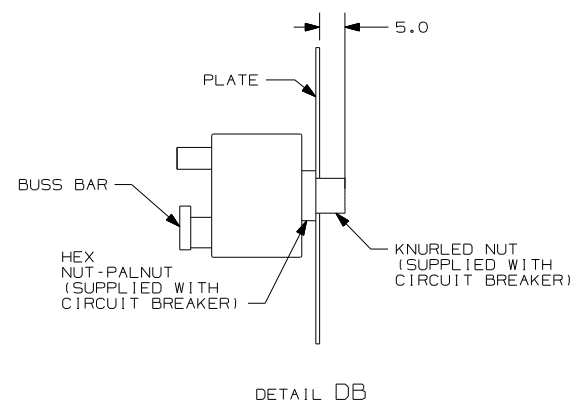
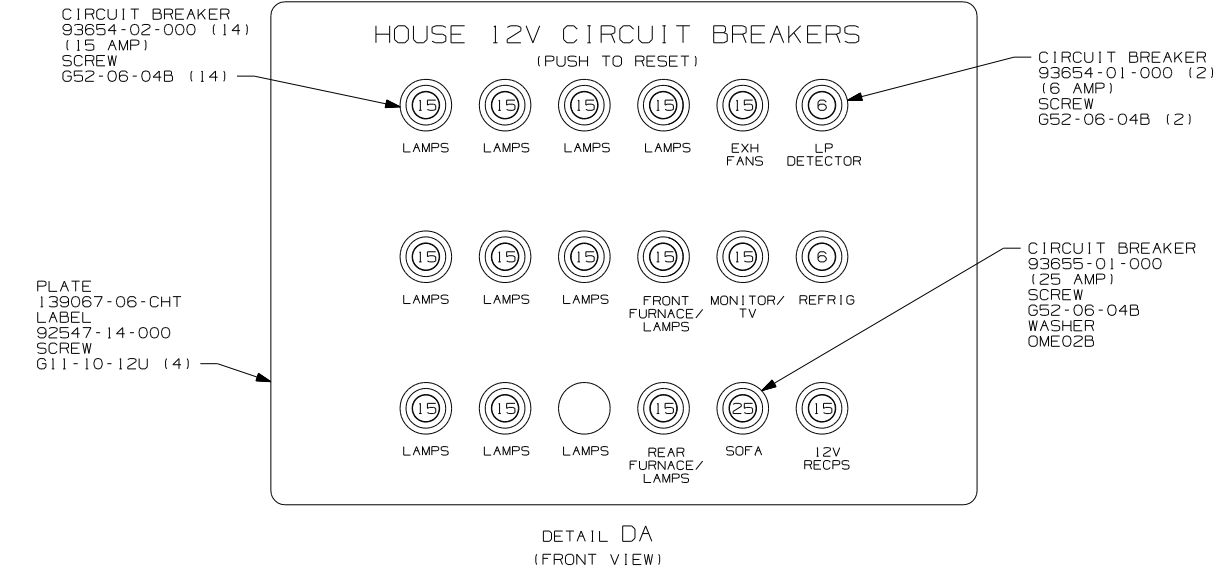
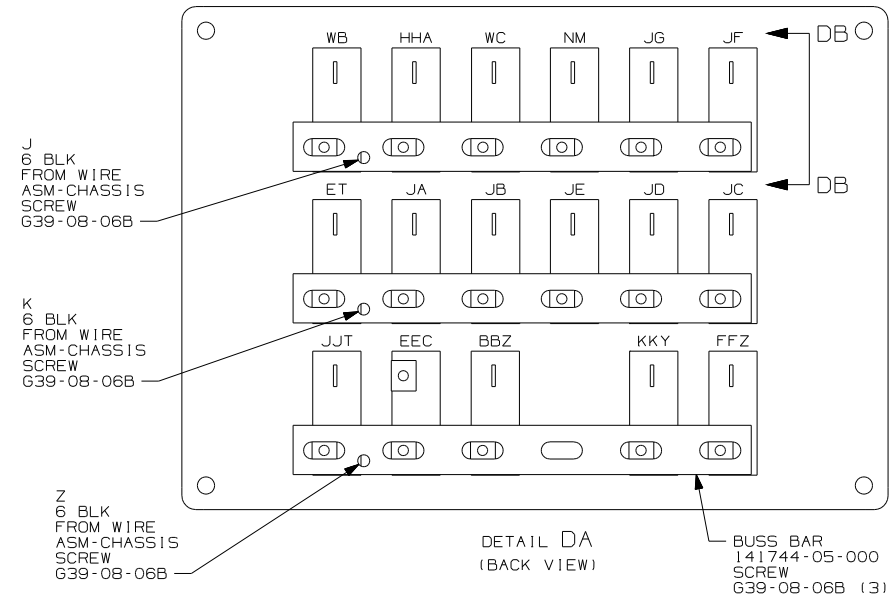
NOTES:
 1. ALL WIRES TO BE SECURED WITH CLAMP 10495 OR 10497 OR WIRE TIE 8343 OR 108046 EVERY 600MM, USE SCREW G67-XX-XXX OR G56-XX-XXX AS APPROPRIATE FOR INTALLATION.

- 6 SWITCH-LOUNGE 145638-10-CHT (CONNECTS HOUSING WITH CIRCUITS FFW,PL,FFX)
- 7 SWITCH-PORCH 145638-01-CHT (CONNECTS HOUSING WITH CIRCUITS NM,PJ)
- 6 SWITCH-DOOR LOCKS 145638-09-CHT (CONNECTS HOUSING WITH CIRCUITS PX,MK,PY)
- 6 SWITCH-COMPARTMENT DOOR LOCKS 145638-09-CHT (CONNECTS HOUSING WITH CIRCUITS DDZ,MK,EEA)
- 6 SWITCH-AWNING SELECTOR 145638-07-CHT (CONNECTS HOUSING WITH CIRCUITS FFP,FFV,FFU,FFL)
- 6 SWITCH-AWNING CONTROL 145638-09-CHT (CONNECTS HOUSING WITH CIRCUITS FFM,FFU,FFK,FFR,FFV,FFN)
- 7 SWITCH-STEP 145638-01-CHT (CONNECTS HOUSING WITH CIRCUITS ER,ES)
- 6 SWITCH-BATTERY DISCONNECT 145638-09-CHT (CONNECTS HOUSING WITH CIRCUITS KF,LH,LJ,LJ,LG,KF)
- 6 SWITCH-LAMP 145638-01-CHT (CONNECTS HOUSING WITH CIRCUITS NM,HA)
- 6 SWITCH-VISOR 145638-12-CHT (CONNECTS HOUSING WITH CIRCUITS HHN,MK,HHM,HHM,MU,HHN)
- 6 SWITCH-COVER 145638-09-CHT (CONNECTS HOUSING WITH CIRCUITS GX,HHC,KA,KA,HHD,6X)



- (64J) SEAT PED-6-WAY DR/PASS POWER
- (10A) TV (REAR)-20"COLOR, STEREO
- (265) CODES/STANDARDS-CSA/CMVSS
- (1B1) CODES/STANDARDS USA

FIRST USED	06 S40KD	
TITLE	DO NOT SCALE DRAWING	
	WIRING INSTL-BODY, 12V	
SHEET 3	PART NO	152888 REV



- 3 CUT ROPE LIGHT AT X MARKS ON LIGHT AND INSTALL CONNECTOR 146514-02-000.
- 2 PLACE CONNECTOR HERE TO MAKE CONNECTION TO MATING HOUSING.
1. ALL WIRES TO BE SECURED WITH CLAMP 10495 OR 10497 OR WIRE TIE 8343 OR 108046 EVERY 600MM, USE SCREW G67-XX-XXX OR G56-XX-XXX AS APPROPRIATE FOR INSTALLATION.

43W CABINET-LAVATORY
43V CABINET-CHEST OF DRAWERS

FIRST USED	06 S40KD		
TITLE	DO NOT SCALE DRAWING		
	WIRING INSTL-BODY, 12V		
SHEET 4	PART NO	152888	REV

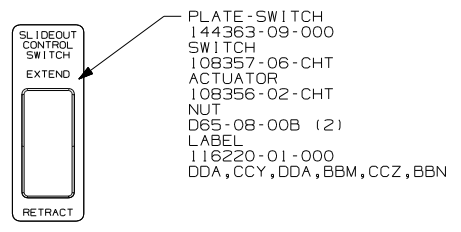
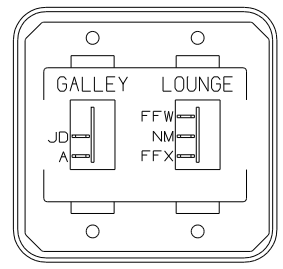


PLATE-SWITCH
144363-09-000
SWITCH
108357-06-CHT
ACTUATOR
108356-02-CHT
NUT
D65-08-00B (2)
LABEL
116220-01-000
DDA,CCY,DDA,BBM,CCZ,BBN

WARNING
UNDERSTAND OPERATOR'S MANUAL BEFORE USING KEEP PEOPLE AND OBSTRUCTIONS CLEAR OF SLIDEOUT ROOM WHEN OPERATING TO AVOID INJURY AND/OR PROPERTY DAMAGE

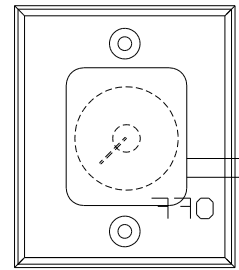
LABEL-WARNING
116549-02-000

DETAIL EA



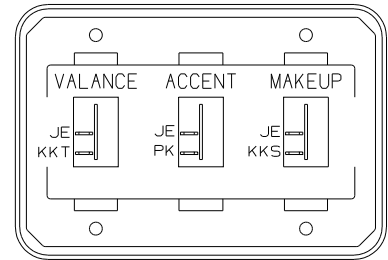
SWITCH-ROCKER
135740-01-CHT
135740-02-CHT
SWITCH-BASE
135741-02-CHT
SWITCH-BEZEL
135742-18-CHT
SCREW
G11-08-08U (4)

DETAIL EF



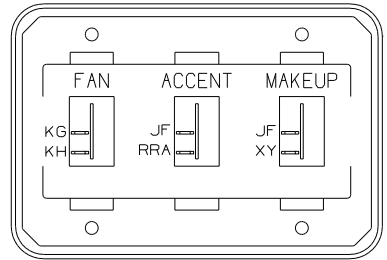
SWITCH
137889-01-000
SCREW
G11-06-10U (2)

DETAIL EL



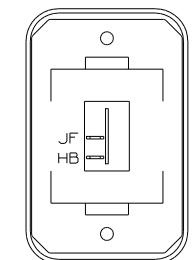
SWITCH-ROCKER
135740-01-CHT (3)
SWITCH-BASE
135741-03-CHT
SWITCH-BEZEL
135742-43-CHT
SCREW
G11-08-08U (6)

DETAIL EN 43W



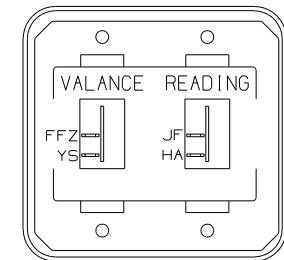
SWITCH-ROCKER
135740-01-CHT (3)
SWITCH-BASE
135741-03-CHT
SWITCH-BEZEL
135742-42-CHT
SCREW
G11-08-08U (6)

DETAIL EB



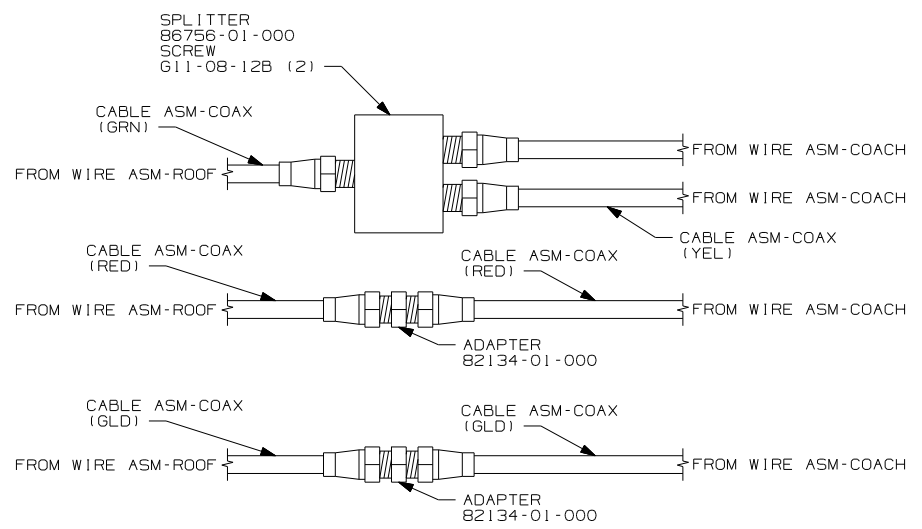
SWITCH-ROCKER
135740-01-CHT
SWITCH-BASE
135741-01-CHT
SWITCH-BEZEL
135742-01-CHT
SCREW
G11-08-08U (2)

DETAIL EG



SWITCH-ROCKER
135740-01-CHT (2)
SWITCH-BASE
135741-02-CHT
SWITCH-BEZEL
135742-37-CHT
SCREW
G11-08-08U (4)

DETAIL EM

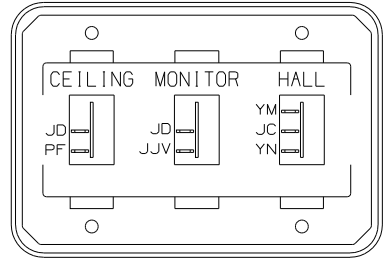


SPLITTER
86756-01-000
SCREW
G11-08-12B (2)

ADAPTER
82134-01-000

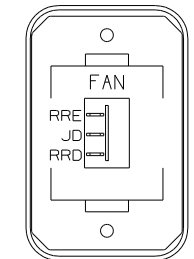
ADAPTER
82134-01-000

DETAIL EP



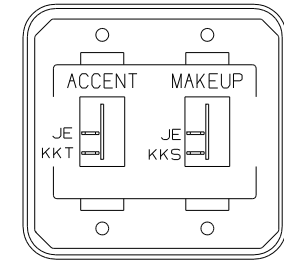
SWITCH-ROCKER
135740-01-CHT (2)
SWITCH-BASE
135740-02-CHT
SWITCH-BEZEL
135741-03-CHT
SWITCH-BEZEL
135742-32-CHT
SCREW
G11-08-08U (6)

DETAIL EC



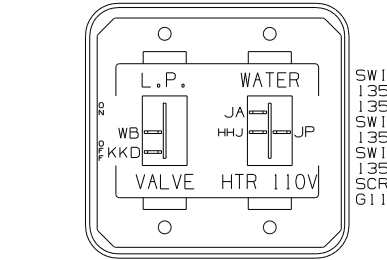
SWITCH-ROCKER
135740-04-CHT
SWITCH-BASE
135741-01-CHT
SWITCH-BEZEL
135742-12-CHT
SCREW
G11-08-08U (2)
WIRE ASM-RESISTOR,FAN
140195-01-000

DETAIL EH 39Y



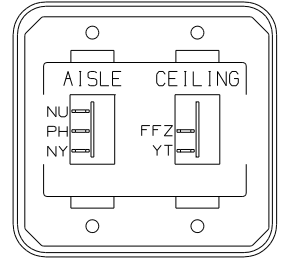
SWITCH-ROCKER
135740-01-CHT (2)
SWITCH-BASE
135741-02-CHT
SWITCH-BEZEL
135742-46-CHT
SCREW
G11-08-08U (4)

DETAIL EN 43V



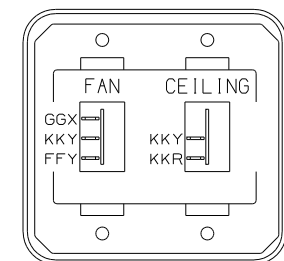
SWITCH-ROCKER
135740-01-CHT
135740-06-CHT
SWITCH-BASE
135741-02-CHT
SWITCH-BEZEL
135742-34-CHT
SCREW
G11-08-08U (4)

DETAIL ED



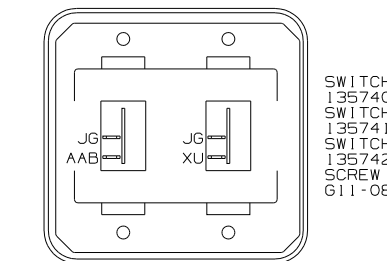
SWITCH-ROCKER
135740-01-CHT
135740-02-CHT
SWITCH-BASE
135741-02-CHT
SWITCH-BEZEL
135742-13-CHT
SCREW
G11-08-08U (4)

DETAIL EJ



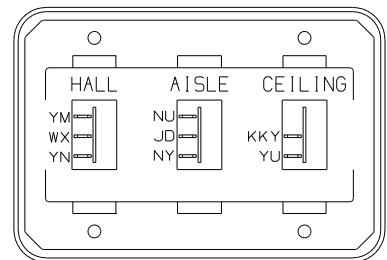
SWITCH-ROCKER
135740-01-CHT
135740-04-CHT
SWITCH-BASE
135741-02-CHT
SWITCH-BEZEL
135742-33-CHT
SCREW
G11-08-08U (4)
WIRE ASM-RESISTOR,FAN
140195-01-000

DETAIL ER 41Y



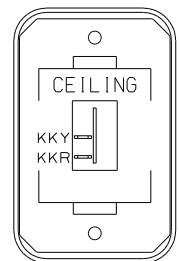
SWITCH-ROCKER
135740-01-CHT (2)
SWITCH-BASE
135741-02-CHT
SWITCH-BEZEL
135742-02-CHT
SCREW
G11-08-08U (4)

DETAIL EE



SWITCH-ROCKER
135740-01-CHT
135740-02-CHT (2)
SWITCH-BASE
135741-03-CHT
SWITCH-BEZEL
135742-25-CHT
SCREW
G11-08-08U (4)

DETAIL EK



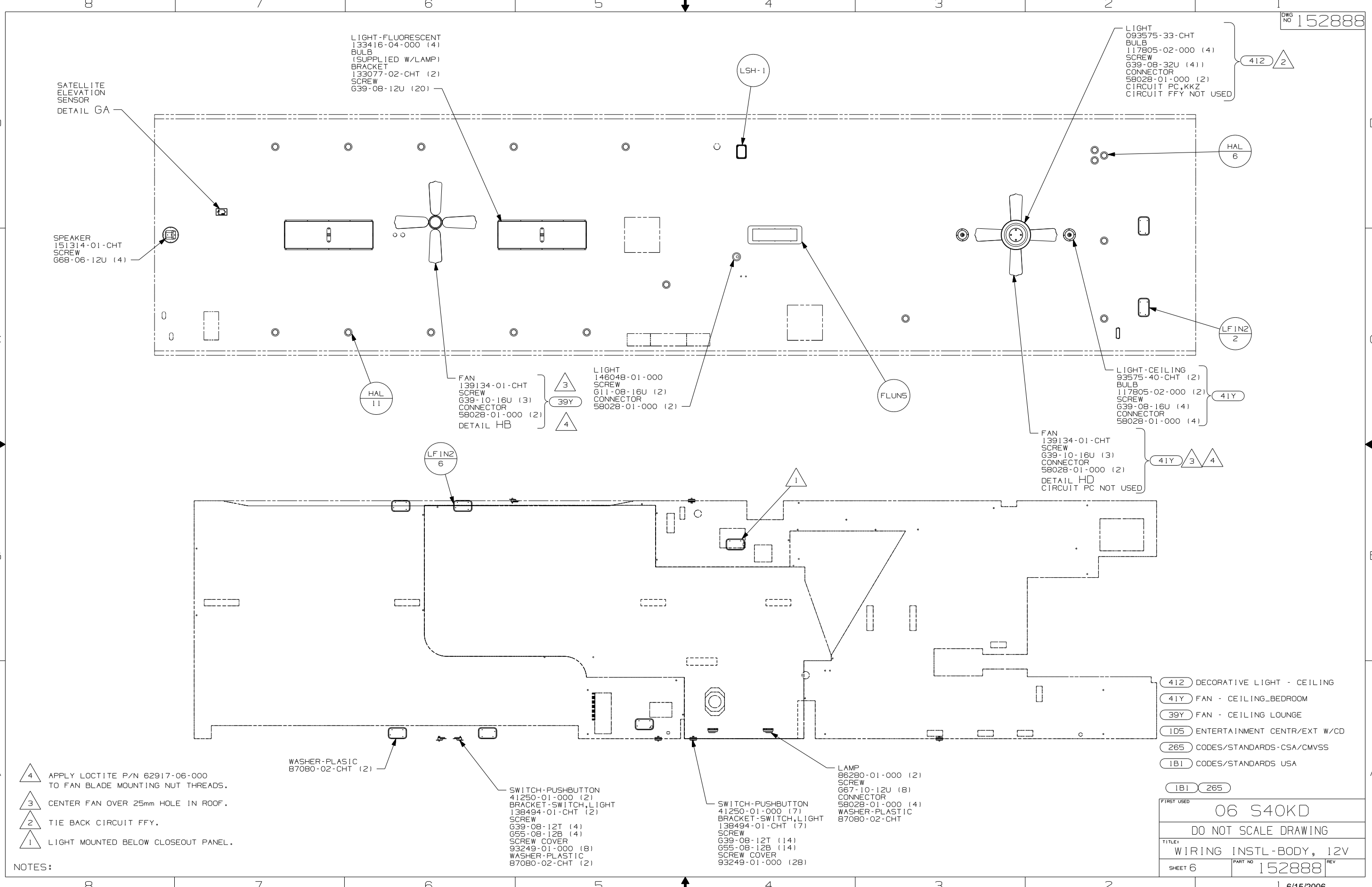
SWITCH-ROCKER
135740-01-CHT
SWITCH-BASE
135741-01-CHT
SWITCH-BEZEL
135742-07-CHT
SCREW
G11-08-08U (2)

DETAIL ER 412

- 412 DECORATIVE LIGHT - CEILING
- 43V CABINET-CHEST OF DRAWERS
- 43W CABINET-LAVATORY
- 41Y FAN - CEILING-BEDROOM
- 39Y FAN - CEILING LOUNGE
- 265 CODES/STANDARDS-CSA/CMVSS
- 1B1 CODES/STANDARDS USA
- 1B1 265

FIRST USED		06 S40KD	
DO NOT SCALE DRAWING			
TITLE: WIRING INSTL-BODY, 12V			
SHEET 5	PART NO	152888	REV

NOTES:
1 CONNECT WIRE ASM-RESISTOR,FAN TO 2-PIN HOUSING LOCATED BY THE SWITCH WIRES.



LIGHT-FLUORESCENT
133416-04-000 (4)
BULB
(SUPPLIED W/LAMP)
BRACKET
133077-02-CHT (2)
SCREW
G39-08-12U (20)

LIGHT
093575-33-CHT
BULB
117805-02-000 (4)
SCREW
G39-08-32U (41)
CONNECTOR
58028-01-000 (2)
CIRCUIT PC, KKZ
CIRCUIT FFY NOT USED

SATELLITE
ELEVATION
SENSOR
DETAIL GA

SPEAKER
151314-01-CHT
SCREW
G68-06-12U (4)

FAN
139134-01-CHT
SCREW
G39-10-16U (3)
CONNECTOR
58028-01-000 (2)
DETAIL HB

LIGHT
146048-01-000
SCREW
G11-08-16U (2)
CONNECTOR
58028-01-000 (2)

LIGHT-CEILING
93575-40-CHT (2)
BULB
117805-02-000 (2)
SCREW
G39-08-16U (4)
CONNECTOR
58028-01-000 (4)

FAN
139134-01-CHT
SCREW
G39-10-16U (3)
CONNECTOR
58028-01-000 (2)
DETAIL HD
CIRCUIT PC NOT USED

WASHER-PLASTIC
87080-02-CHT (2)

SWITCH-PUSHBUTTON
41250-01-000 (2)
BRACKET-SWITCH, LIGHT
138494-01-CHT (2)
SCREW
G39-08-12T (4)
G55-08-12B (4)
SCREW COVER
93249-01-000 (8)
WASHER-PLASTIC
87080-02-CHT (2)

SWITCH-PUSHBUTTON
41250-01-000 (7)
BRACKET-SWITCH, LIGHT
138494-01-CHT (7)
SCREW
G39-08-12T (14)
G55-08-12B (14)
SCREW COVER
93249-01-000 (28)

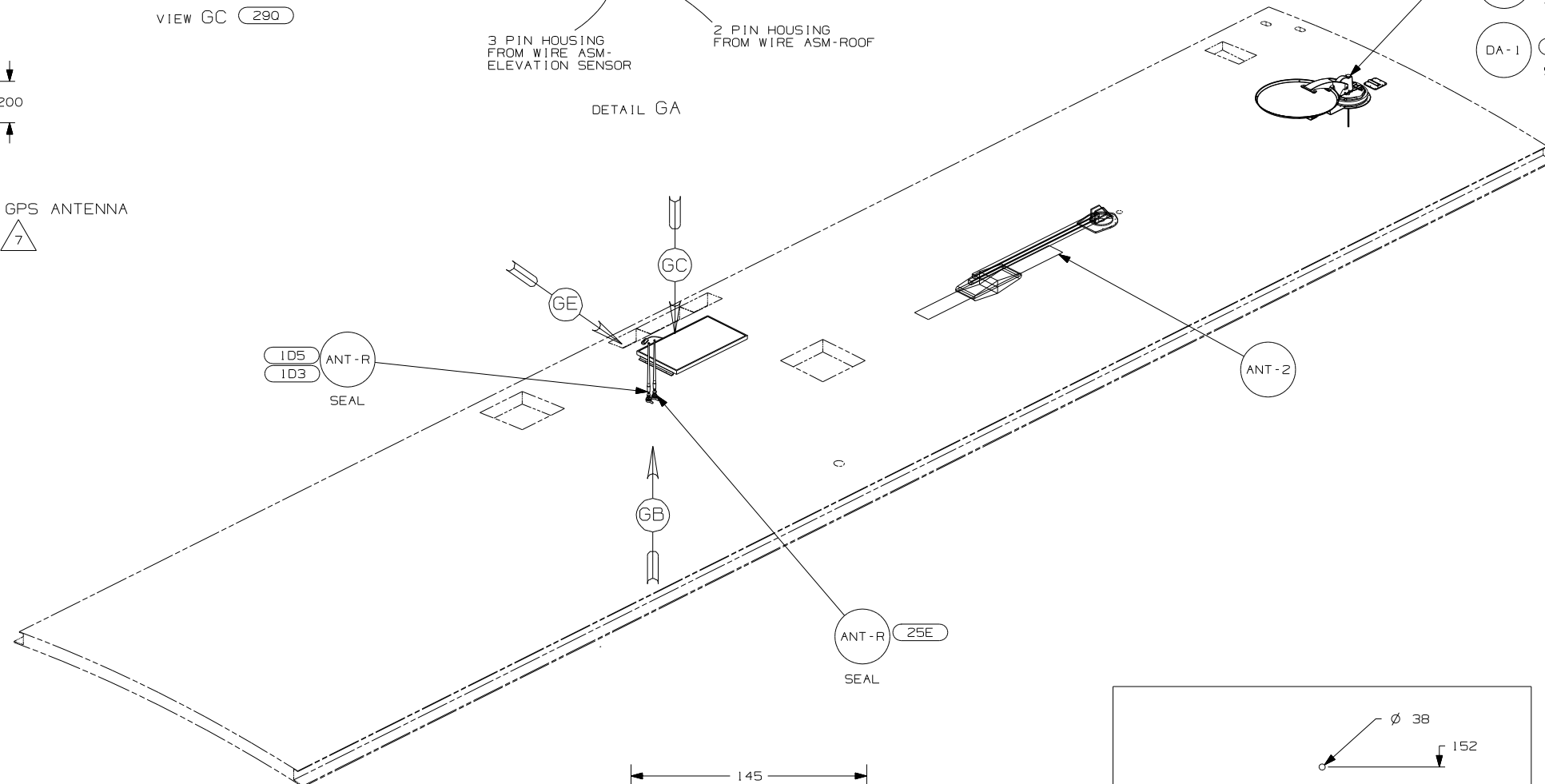
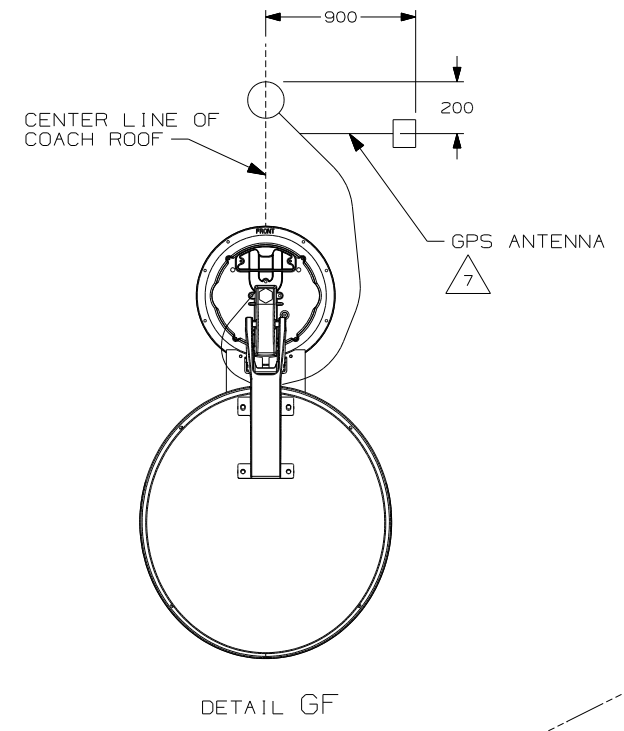
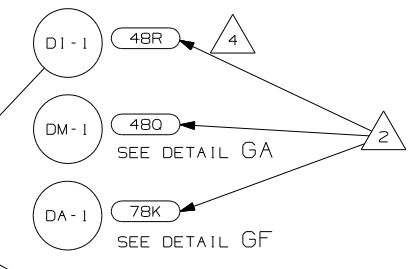
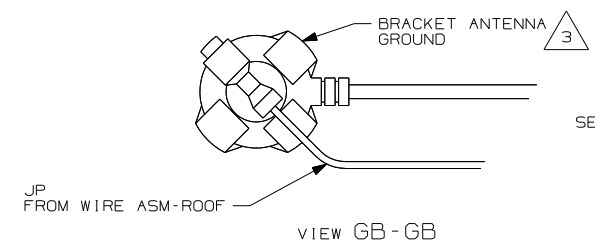
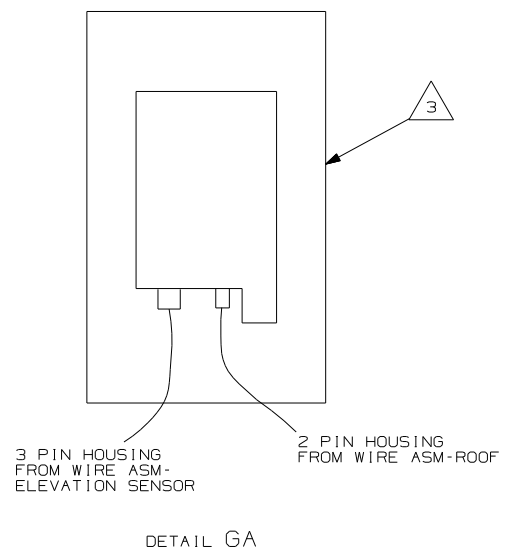
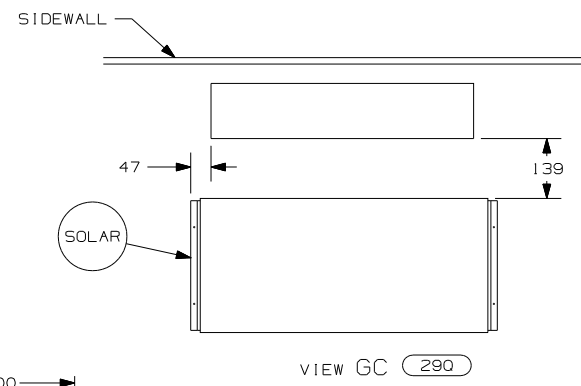
LAMP
86280-01-000 (2)
SCREW
G67-10-12U (8)
CONNECTOR
58028-01-000 (4)
WASHER-PLASTIC
87080-02-CHT

- 412 DECORATIVE LIGHT - CEILING
- 41Y FAN - CEILING_BEDROOM
- 39Y FAN - CEILING LOUNGE
- 1D5 ENTERTAINMENT CENTR/EXT W/CD
- 265 CODES/STANDARDS-CSA/CMVSS
- 1B1 CODES/STANDARDS USA

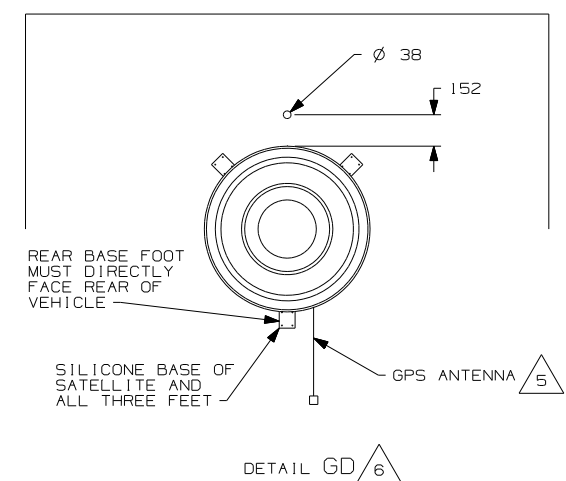
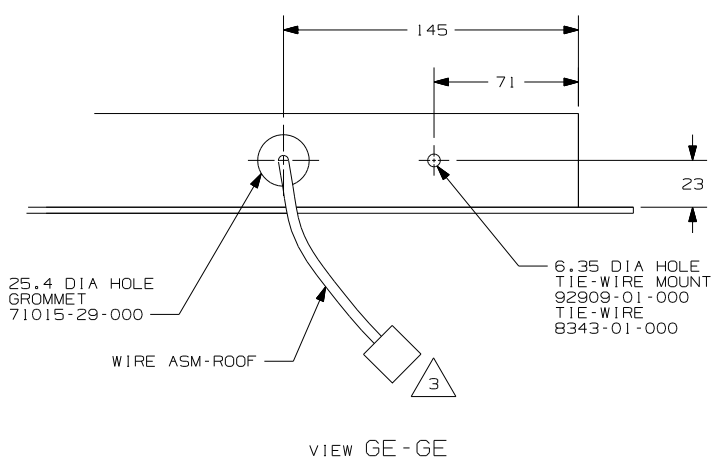
FIRST USED	06 S40KD	
TITLE	DO NOT SCALE DRAWING	
TITLE	WIRING INSTL-BODY, 12V	
SHEET 6	PART NO	152888
REV		

NOTES:

- 4 APPLY LOCTITE P/N 62917-06-000 TO FAN BLADE MOUNTING NUT THREADS.
- 3 CENTER FAN OVER 25mm HOLE IN ROOF.
- 2 TIE BACK CIRCUIT FFY.
- 1 LIGHT MOUNTED BELOW CLOSEOUT PANEL.

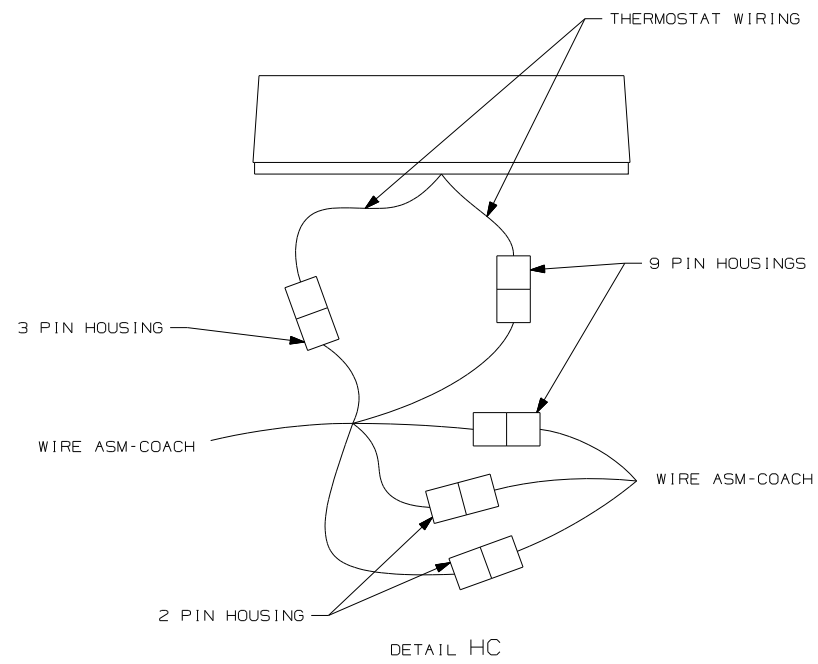
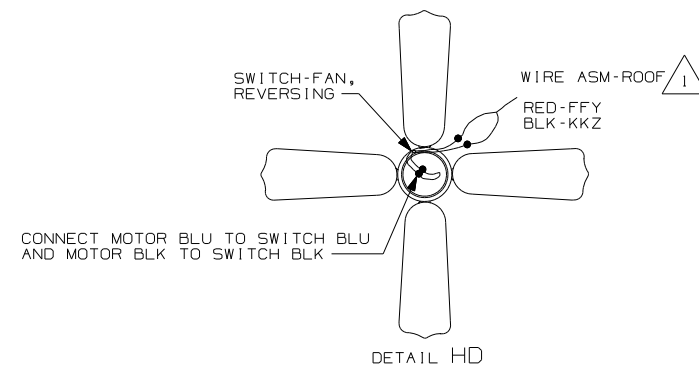
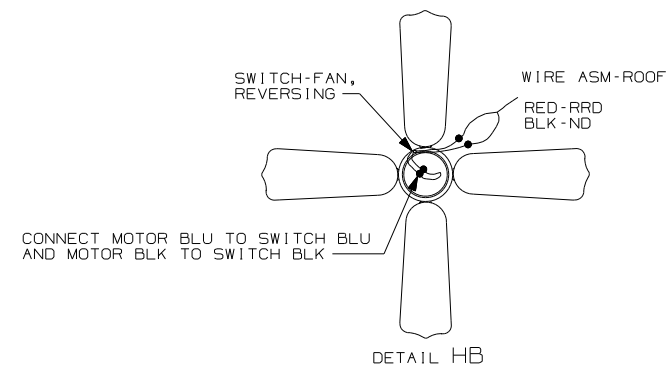
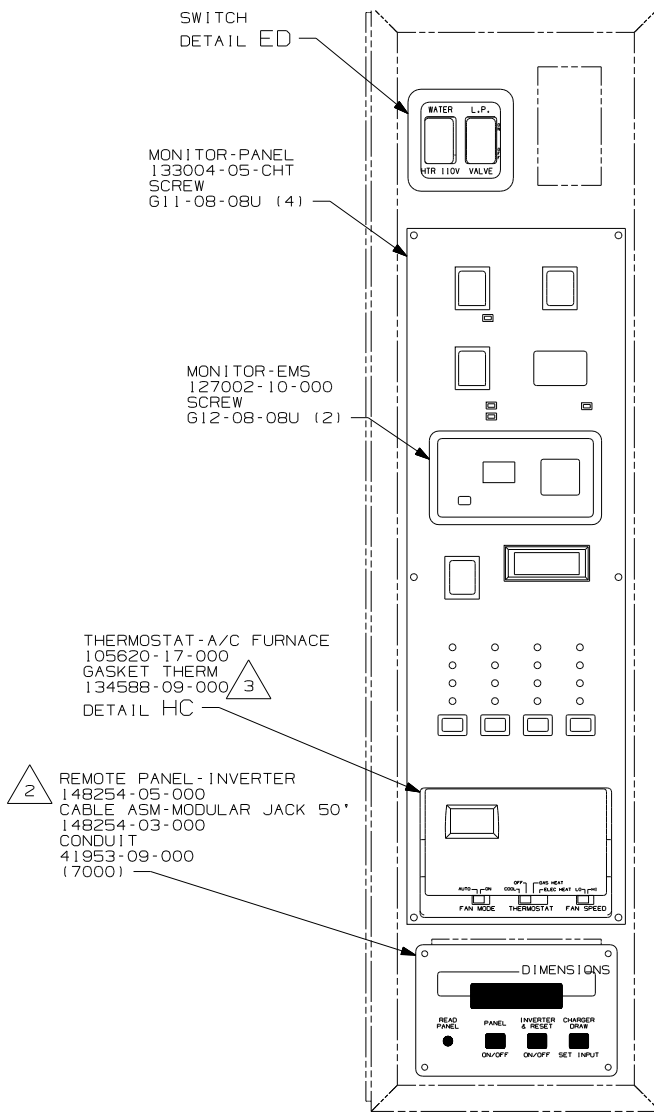


- NOTES:
- 7 MOUNT GPS ANTENNA TO THE RIGHT OF THE SATELLITE AS SHOWN. SECURE CABLE WITH ROOF SEALANT.
 - 6 CUT AND REMOVE SHIPPING STRAPS.
 - 5 MOUNT GPS ANTENNA AS FAR TO THE REAR OF THE SATELLITE AS POSSIBLE. SECURE CABLE WITH ROOF SEALANT.
 - 4 SEE DETAIL GD FOR SATELLITE LOCATION.
 - 3 SENSOR SUPPLIED WITH SATELLITE ASSEMBLY.
 - 2 SEE MANUFACTURER'S INSTALLATION FOR ADDITIONAL INFORMATION.
 - 1 WRAP BRACKET LEGS AROUND ANTENNA BASE.



- 1D3 ENTERTAIN CENTR/EXT TV-DVD
- 48R SAT. SYS. IN-MOTION W/O RCVR.
- 290 SOLAR PANEL - 10 WATT
- 25E REAR STEREO SYSTEM W/CD
- 1D5 ENTERTAINMENT CTR/EXT W/CD
- 7BK SATELLITE DISH-AUTOMATIC
- 48Q SATELLITE DISH & ELEV.SENSOR
- 265 CODES/STANDARDS-CSA/CMVSS
- 1B1 CODES/STANDARDS USA

FIRST USED		06 S40KD	
DO NOT SCALE DRAWING			
TITLE: WIRING INSTL-BODY, 12V			
SHEET 7	PART NO	152888	REV



- 3 INSTALL GASKET ON BAKC SIDE OF ONE PLACE AFTER INSTAOLLATION OF THERMOSTAT, MAKING SURE THAT THE GASKET COVERS AND SEALS THE HOLE THAT THE WIRES PASS THROUGH.
- 2 CONNECT CIRCUIT WB FROM COACH WIRING TO RED WIRE ON REMOTE PANEL.
- 1 TIE BACK CIRCUIT JC.
- NOTES:

FOR ELECTRICAL TORQUE SPECIFICATIONS SEE DWG NO. 128783-01-000

X-X FOR ELECTRICAL CALLOUTS SEE DWG NO. 121339-01-000

181 265	
FIRST USED 06 S40KD	
DO NOT SCALE DRAWING	
TITLE: WIRING INSTL-BODY, 12V	
SHEET 8	PART NO 152888 REV