



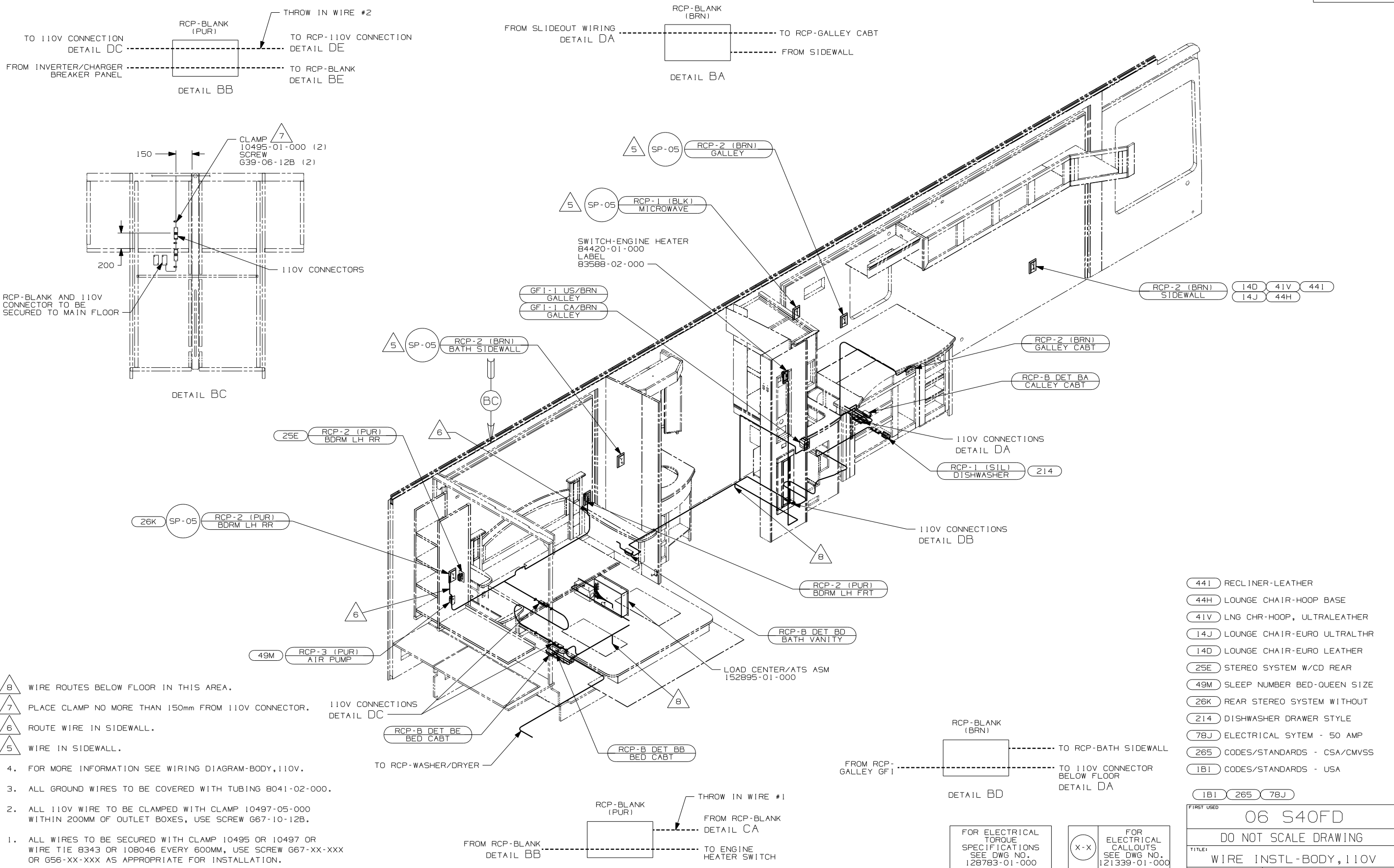
DANGER

Danger of electrical shock, burns or death. Always remove all power sources before attempting any repair, service or diagnostic work. Power can be present from shore power, generator, inverter or battery. All power sources must be disabled and secured before performing any service.



CAUTION

If you lack the skills, tools or equipment to perform diagnostic or repair work leave such work to an authorized Winnebago Industries dealer or other qualified shop.



- 8 WIRE ROUTES BELOW FLOOR IN THIS AREA.
- 7 PLACE CLAMP NO MORE THAN 150mm FROM 110V CONNECTOR.
- 6 ROUTE WIRE IN SIDEWALL.
- 5 WIRE IN SIDEWALL.

4. FOR MORE INFORMATION SEE WIRING DIAGRAM-BODY,110V.
3. ALL GROUND WIRES TO BE COVERED WITH TUBING 8041-02-000.
2. ALL 110V WIRE TO BE CLAMPED WITH CLAMP 10497-05-000 WITHIN 200MM OF OUTLET BOXES, USE SCREW G67-10-12B.
1. ALL WIRES TO BE SECURED WITH CLAMP 10495 OR 10497 OR WIRE TIE 8343 OR 108046 EVERY 600MM, USE SCREW G67-XX-XXX OR G56-XX-XXX AS APPROPRIATE FOR INSTALLATION.

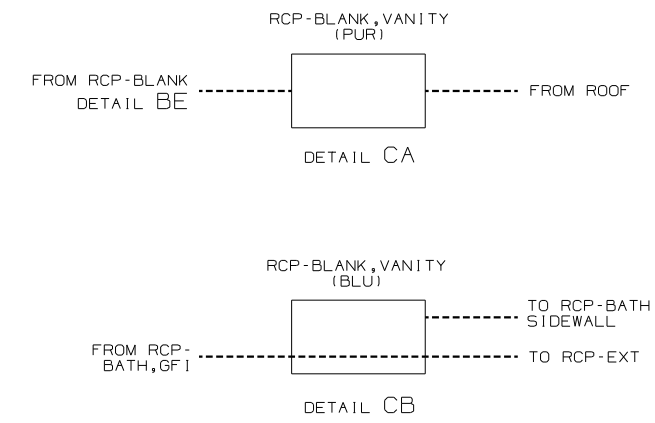
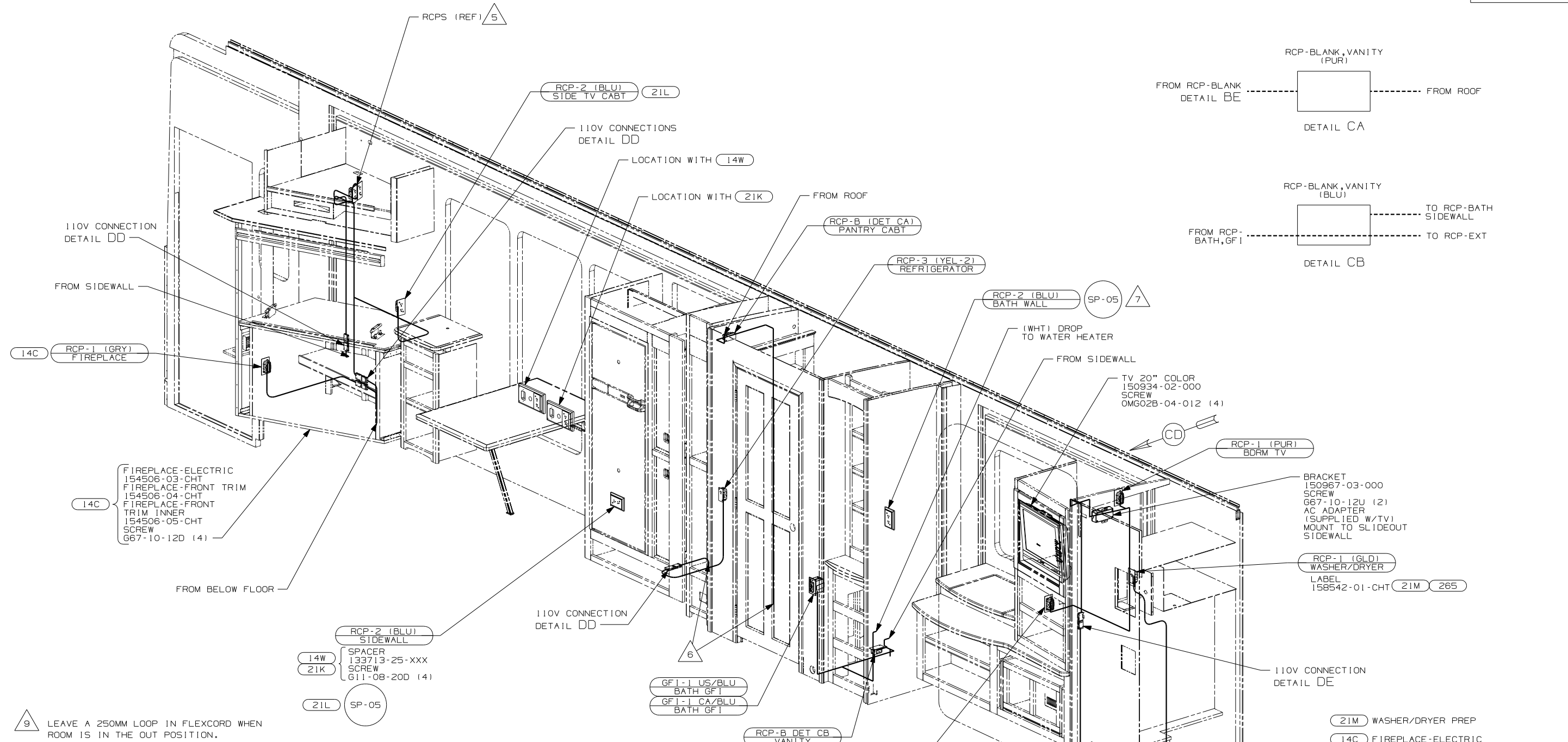
NOTES:

- 441 RECLINER-LEATHER
- 44H LOUNGE CHAIR-HOOP BASE
- 41V LNG CHR-HOOP, ULTRALEATHER
- 14J LOUNGE CHAIR-EURO ULTRALTHR
- 14D LOUNGE CHAIR-EURO LEATHER
- 25E STEREO SYSTEM W/CD REAR
- 49M SLEEP NUMBER BED-QUEEN SIZE
- 26K REAR STEREO SYSTEM WITHOUT
- 214 DISHWASHER DRAWER STYLE
- 78J ELECTRICAL SYTEM - 50 AMP
- 265 CODES/STANDARDS - CSA/CMVSS
- 1B1 CODES/STANDARDS - USA

FIRST USED	
06 S40FD	
DO NOT SCALE DRAWING	
TITLE:	
WIRE INSTL-BODY,110V	
SHEET 2	PART NO
	154262

FOR ELECTRICAL TORQUE SPECIFICATIONS SEE DWG NO. 128783-01-000

FOR ELECTRICAL CALLOUTS SEE DWG NO. 121339-01-000



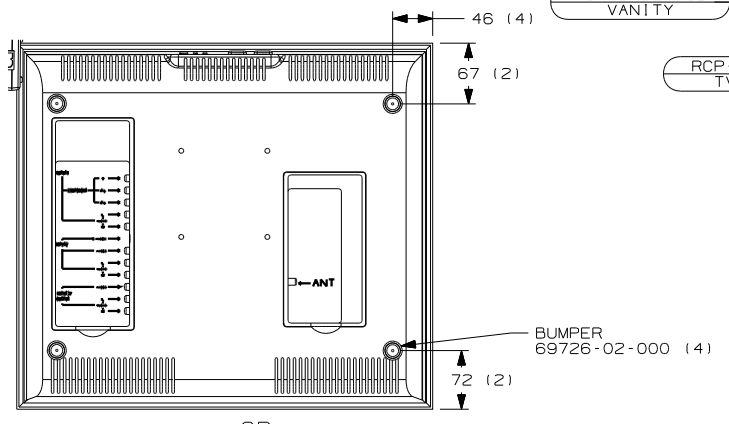
- 154506-03-CHT FIREPLACE-ELECTRIC
- 154506-04-CHT FIREPLACE-FRONT TRIM
- 154506-05-CHT FIREPLACE-FRONT TRIM INNER
- 154506-05-CHT SCREW
- G67-10-12D (4)

- RCP-2 (BLU) SIDEWALL
- 14W SPACER 133713-25-XXX SCREW G11-08-20D (4)
- 21L SP-05

- GF1-1 US/BLU BATH GF1
- GF1-1 CA/BLU BATH GF1

- BRACKET 150967-03-000
- SCREW G67-10-12U (2)
- AC ADAPTER (SUPPLIED W/TV)
- MOUNT TO SLIDEOUT SIDEWALL
- RCP-1 (GLD) WASHER/DRYER
- LABEL 158542-01-CHT 21M 265

9. LEAVE A 250MM LOOP IN FLEXCORD WHEN ROOM IS IN THE OUT POSITION.
8. PLACE CLAMP 150MM FROM REAR EDGE OF SLIDEOUT ROOM AND 25mm IN FROM FACE.
7. WIRE IN SIDEWALL.
6. WIRE ROUTED BELOW FLOOR IN THIS AREA.
5. FOR MORE INFORMATION SEE WIRING INSTL-TV/VCR SIDE
4. FOR MORE INFORMATION SEE WIRING DIAGRAM-BODY,110V.
3. ALL GROUND WIRES TO BE COVERED WITH TUBING 8041-02-000.
2. ALL 110V WIRE TO BE CLAMPED WITH CLAMP 10497-05-000 WITHIN 200MM OF OUTLET BOXES, USE SCREW G67-10-12B.
1. ALL WIRES TO BE SECURED WITH CLAMP 10495 OR 10497 OR WIRE TIE 8343 OR 108046 EVERY 600MM, USE SCREW G67-XX-XXX OR G56-XX-XXX AS APPROPRIATE FOR INSTALLATION.

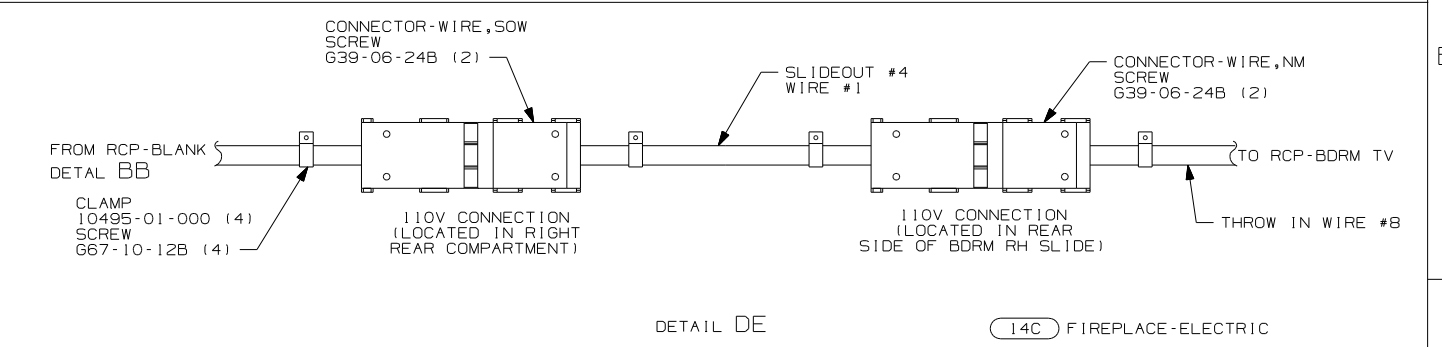
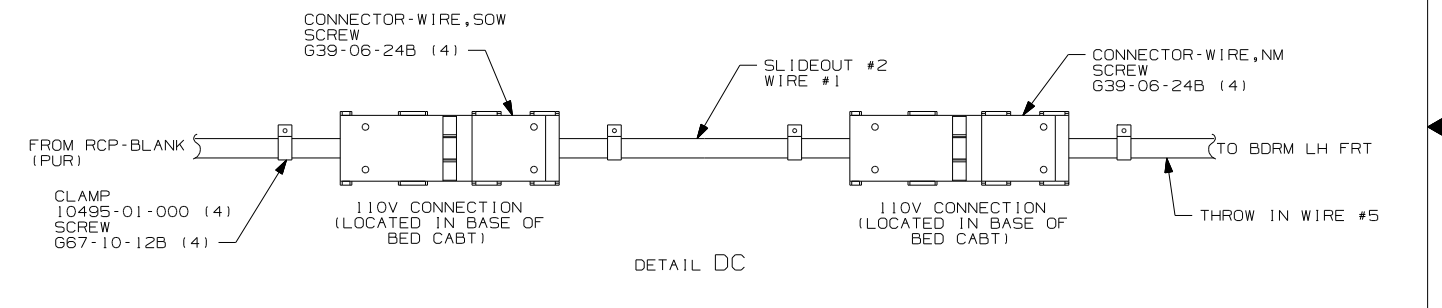
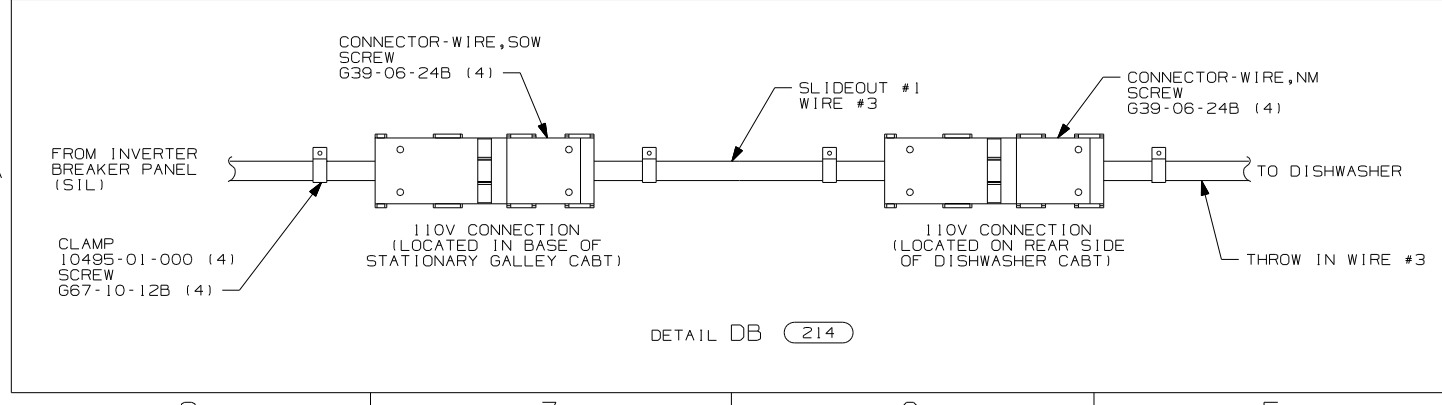
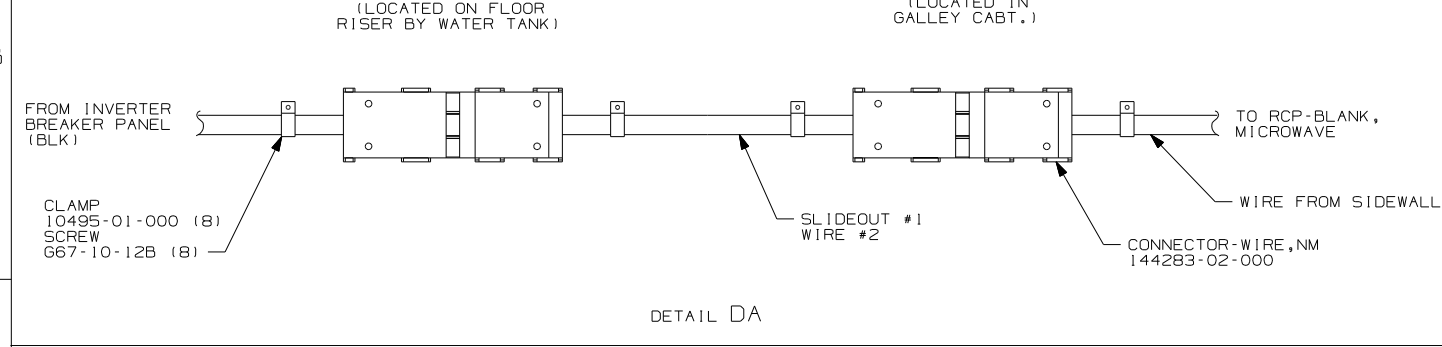
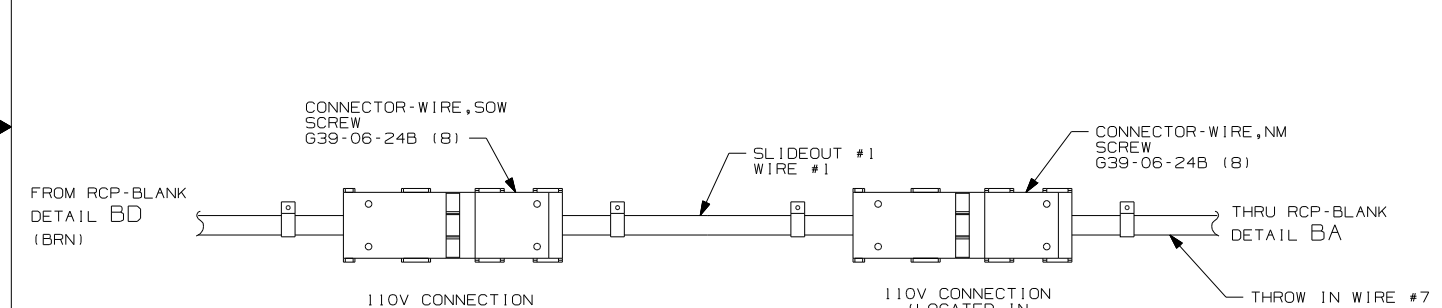
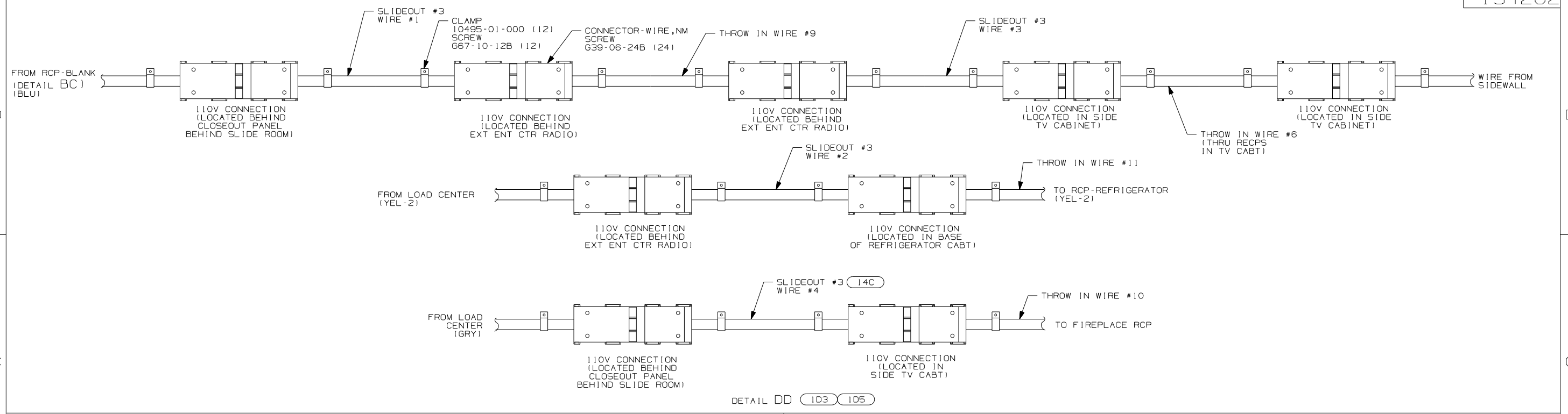


- 21M WASHER/DRYER PREP
- 14C FIREPLACE-ELECTRIC
- 14W DINETTE
- 21L DINING TABLE/CHAIRS
- 21K DINING/COMPUTER TABLE/CHAIRS
- 78J ELECTRICAL SYTEM - 50 AMP
- 265 CODES/STANDARDS - CSA/CMVSS
- 1B1 CODES/STANDARDS - USA

FOR ELECTRICAL TORQUE SPECIFICATIONS SEE DWG NO. 128783-01-000

FOR ELECTRICAL CALLOUTS SEE DWG NO. 121339-01-000

FIRST USED	
06 S40FD	
DO NOT SCALE DRAWING	
TITLE: WIRE INSTL-BODY,110V	
SHEET 3	PART NO 154262

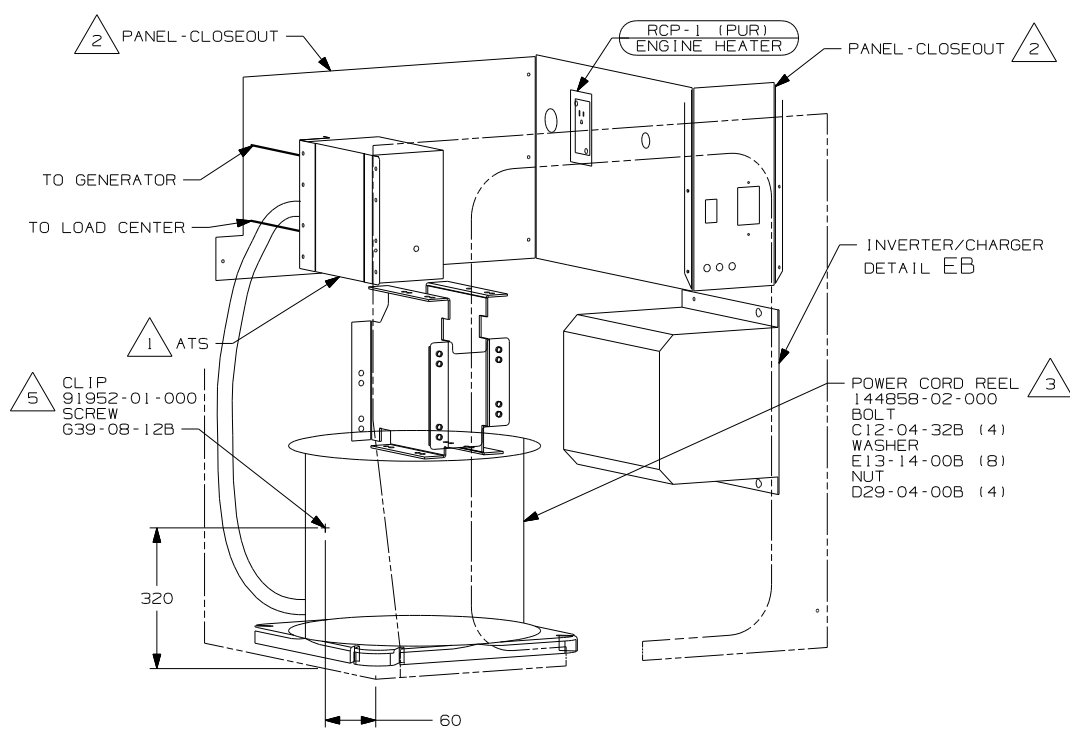


- (14C) FIREPLACE-ELECTRIC
- (214) DISHWASHER DRAWER STYLE
- (105) ENTERTAINMENT CENTR/EXT W/CD
- (103) ENTERTAIN CENTR/EXT TV-DVD
- (265) CODES/STANDARDS-CSA/CMVSS
- (1B1) CODES/STANDARDS USA

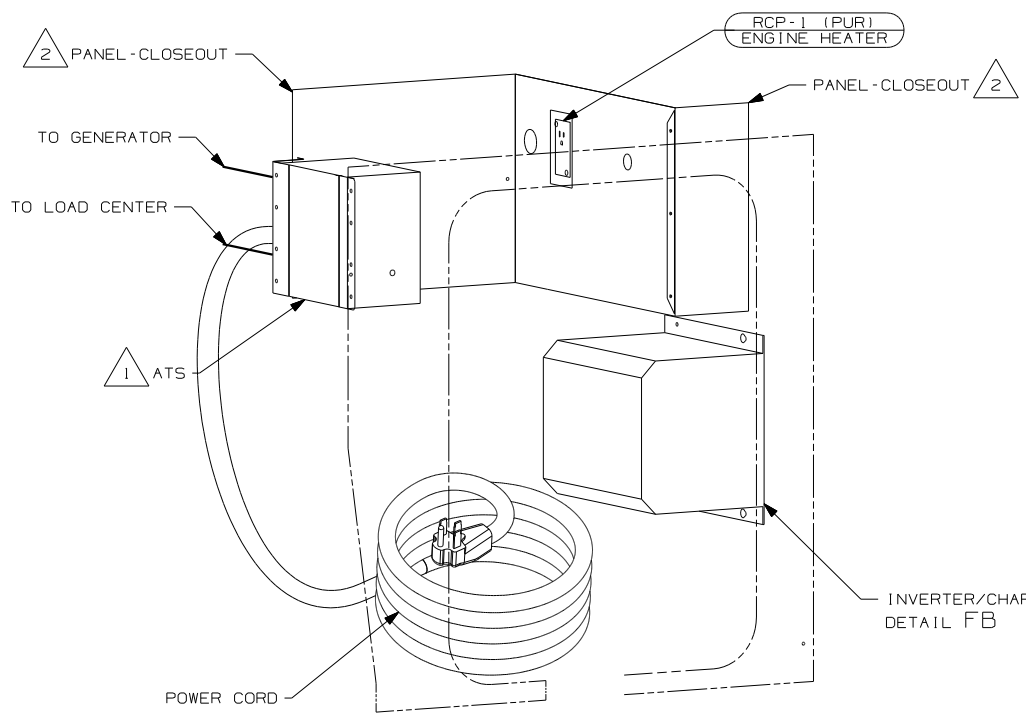
FIRST USED	06 S40FD
TITLE	DO NOT SCALE DRAWING
	WIRE INSTL-BODY, 110V
SHEET 4	PART NO 154262

FOR ELECTRICAL TORQUE SPECIFICATIONS SEE DWG NO. 128783-01-000

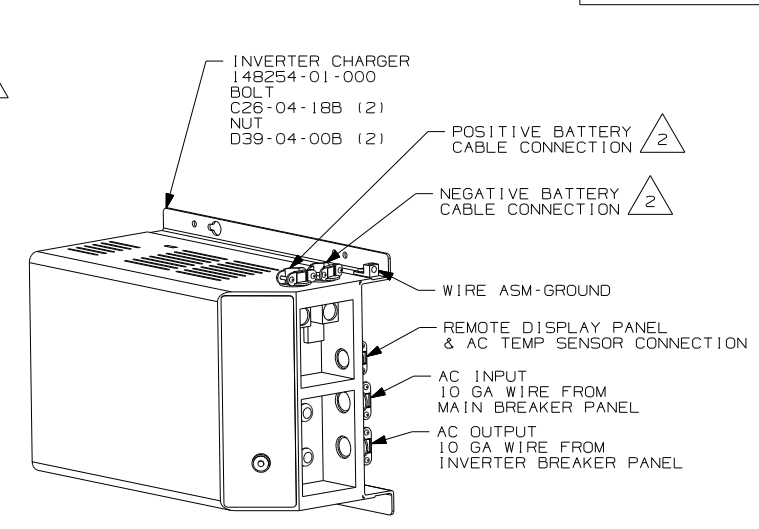
(X-X) FOR ELECTRICAL CALLOUTS SEE DWG NO. 121339-01-000



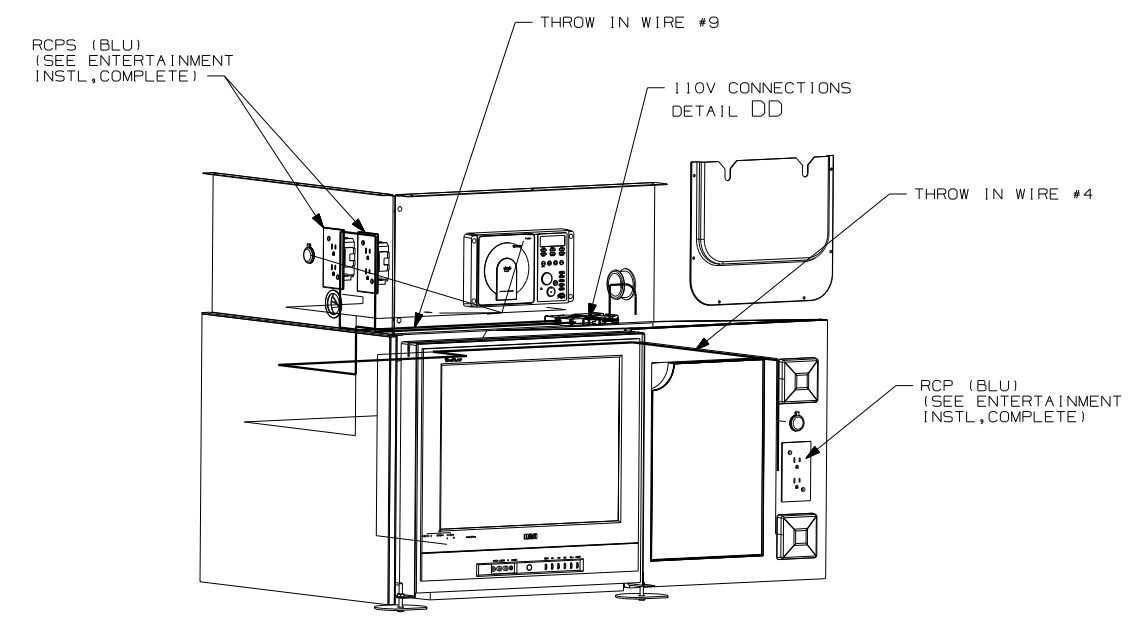
VIEW EA 12F



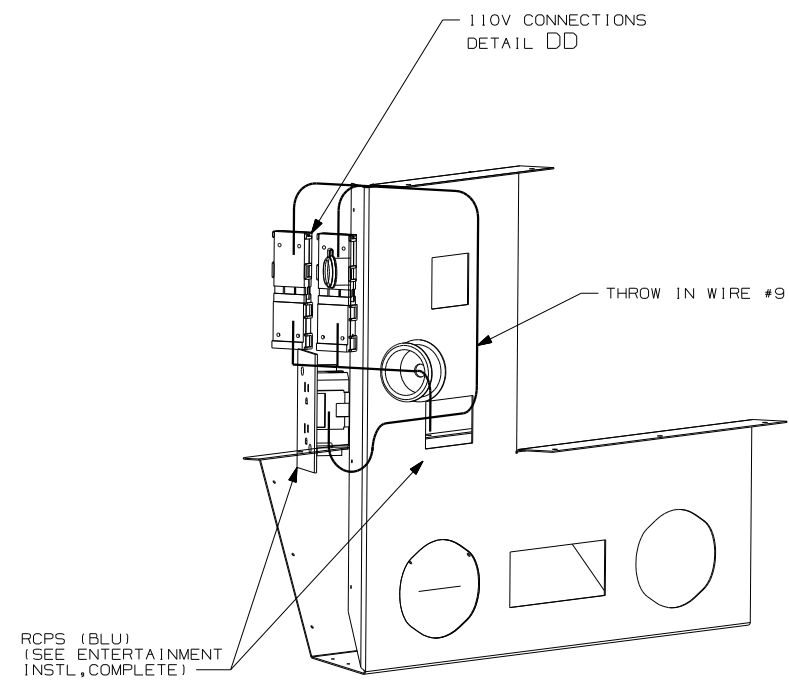
VIEW EA 12G



DETAIL EB



DETAIL EC 1D3



DETAIL EC 1D5

- 12G POWER CORD REEL - WITHOUT
- 12F POWER CORD REEL
- 1D5 ENTERTAINMENT CENTR/EXT W/CD
- 1D3 ENTERTAIN CENTR/EXT TV-DVD
- 265 CODES/STANDARDS-CSA/CMVSS
- 1B1 CODES/STANDARDS USA

- 5 FASTEN CLIP TO INSIDE LEFT COMPARTMENT WALL.
- 4 PLUG POWER CORD REEL MOUNTING HOLES WITH PLUG-PLASTIC 81211-01-000 (4).
- 3 INSERT BOLT FROM BOTTOM OF COMPT.
- 2 SEE WIRING INSTL-CHASSIS FOR ADDITIONAL INFORMATION.
- 1 SEE LOAD CENTER/ATS ASM FOR ADDITIONAL INFORMATION.

NOTES:

FOR ELECTRICAL TORQUE SPECIFICATIONS SEE DWG NO. 128783-01-000

X-X FOR ELECTRICAL CALLOUTS SEE DWG NO. 121339-01-000

FIRST USED	
06 S40FD	
DO NOT SCALE DRAWING	
TITLE:	
WIRE INSTL-BODY, 110V	
SHEET 5	PART NO 154262