



DANGER

Danger of electrical shock, burns or death. Always remove all power sources before attempting any repair, service or diagnostic work. Power can be present from shore power, generator, inverter or battery. All power sources must be disabled and secured before performing any service.

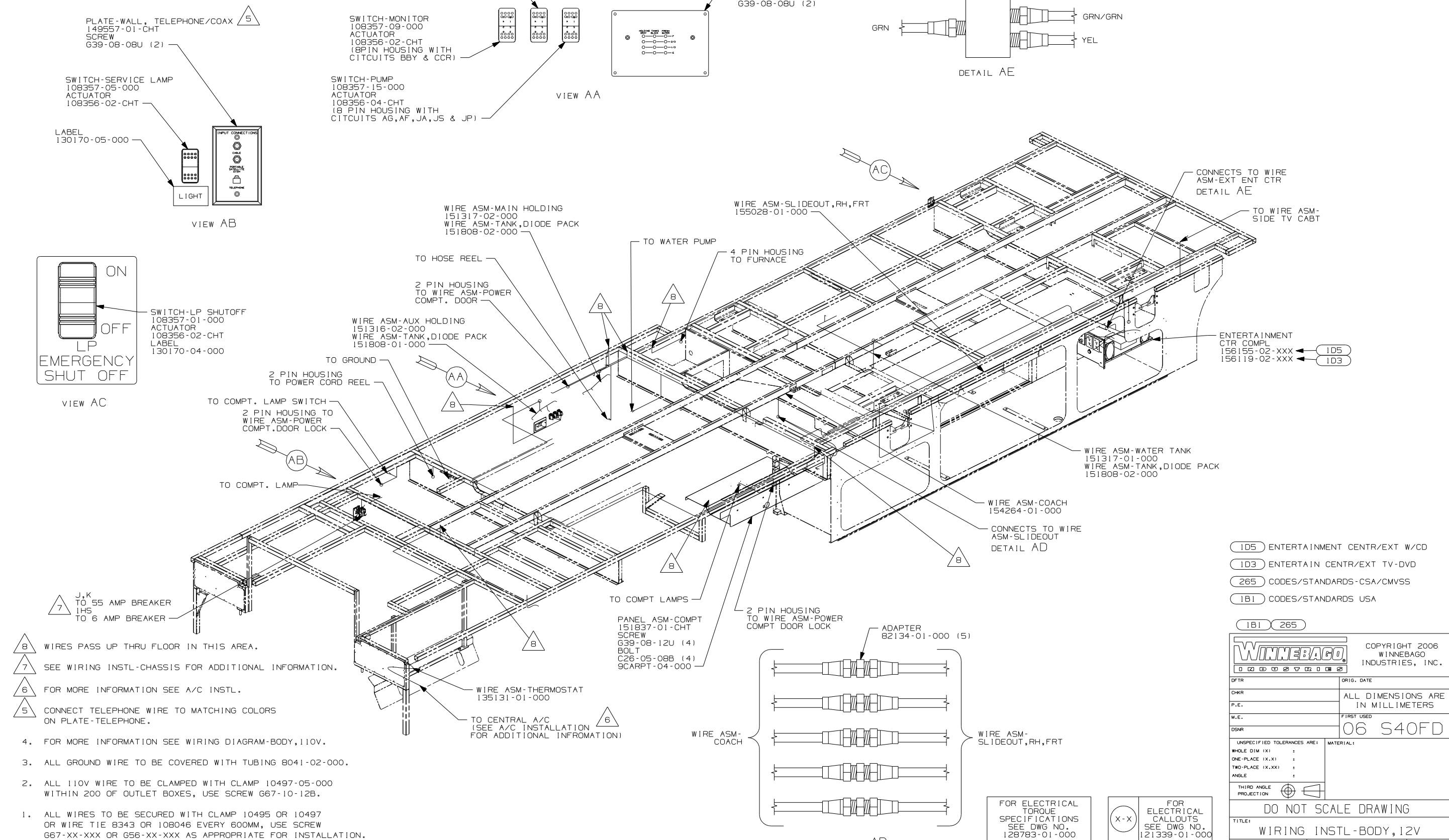


CAUTION

If you lack the skills, tools or equipment to perform diagnostic or repair work leave such work to an authorized Winnebago Industries dealer or other qualified shop.

DRAWING NO.	
154261-01	WIN
154261-02	ITA

RELEASE	REV/DATE	DWG NO
	A	154261
REV ZONE	REVISION RECORD	DATE
		DTR-016



NOTES:

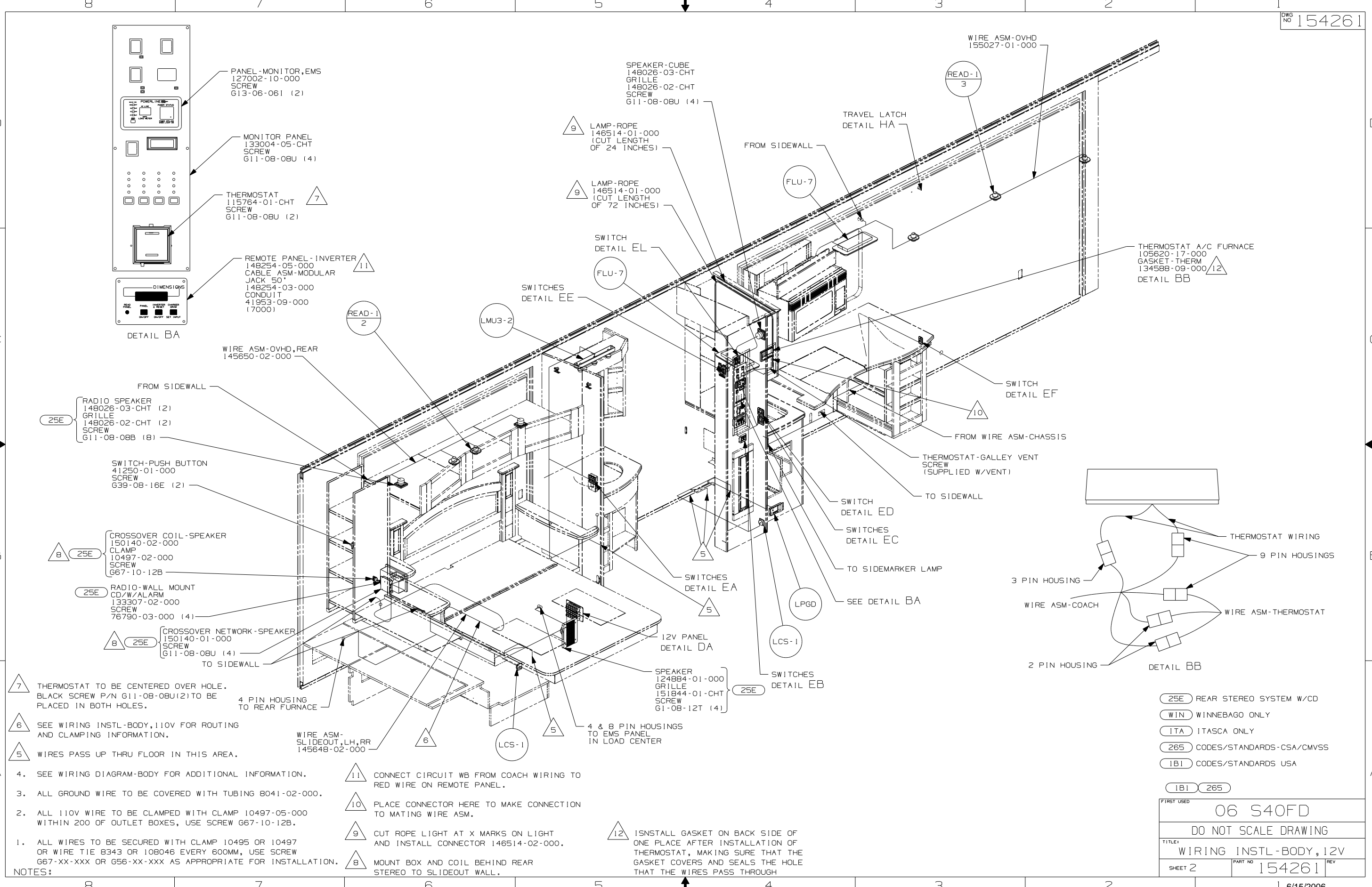
- (105) ENTERTAINMENT CENTR/EXT W/CD
- (103) ENTERTAINMENT CENTR/EXT TV-DVD
- (265) CODES/STANDARDS-CSA/CMVSS
- (181) CODES/STANDARDS USA
- (181) (265)

WINNEBAGO		COPYRIGHT 2006 WINNEBAGO INDUSTRIES, INC.	
DTR	ORIG. DATE		
CHKR	ALL DIMENSIONS ARE IN MILLIMETERS		
P.E.	FIRST USED	06 S40FD	
M.E.			
DSNR			
UNSPECIFIED TOLERANCES ARE:		MATERIAL:	
WHOLE DIM (X)	:		
ONE-PLACE (X.X)	:		
TWO-PLACE (X.XX)	:		
ANGLE	:		
THIRD ANGLE PROJECTION			
DO NOT SCALE DRAWING			
TITLE: WIRING INSTL-BODY,12V			
SHEET 1 OF 8	PART NO	154261	
REF:	1 6/15/2006		

FOR ELECTRICAL
TORQUE
SPECIFICATIONS
SEE DWG NO.
128783-01-000

(X-X)
FOR ELECTRICAL
CALLOUTS
SEE DWG NO.
121339-01-000

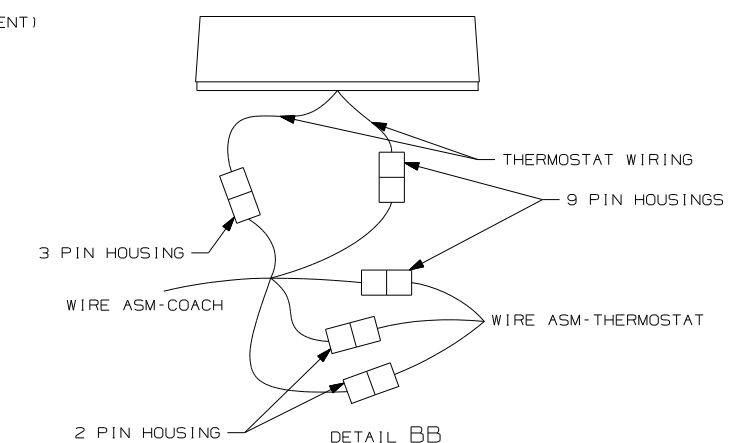
DETAIL AD



- 7 THERMOSTAT TO BE CENTERED OVER HOLE. BLACK SCREW P/N G11-08-08U(2) TO BE PLACED IN BOTH HOLES.
- 6 SEE WIRING INSTL-BODY,110V FOR ROUTING AND CLAMPING INFORMATION.
- 5 WIRES PASS UP THRU FLOOR IN THIS AREA.
- 4. SEE WIRING DIAGRAM-BODY FOR ADDITIONAL INFORMATION.
- 3. ALL GROUND WIRE TO BE COVERED WITH TUBING 8041-02-000.
- 2. ALL 110V WIRE TO BE CLAMPED WITH CLAMP 10497-05-000 WITHIN 200 OF OUTLET BOXES, USE SCREW G67-10-12B.
- 1. ALL WIRES TO BE SECURED WITH CLAMP 10495 OR 10497 OR WIRE TIE 8343 OR 108046 EVERY 600MM, USE SCREW G67-XX-XXX OR G56-XX-XXX AS APPROPRIATE FOR INSTALLATION.

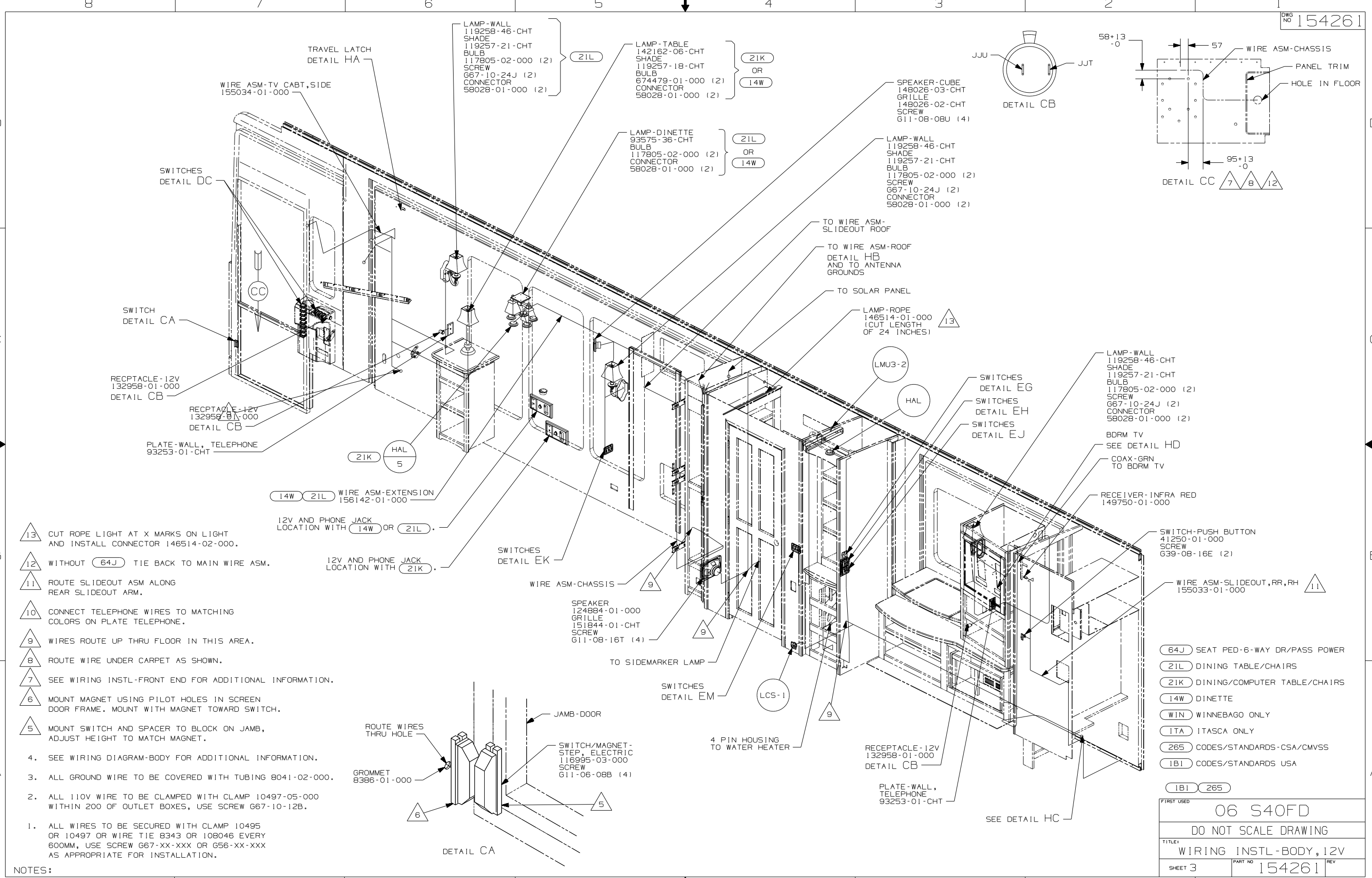
- 11 CONNECT CIRCUIT WB FROM COACH WIRING TO RED WIRE ON REMOTE PANEL.
- 10 PLACE CONNECTOR HERE TO MAKE CONNECTION TO MATING WIRE ASM.
- 9 CUT ROPE LIGHT AT X MARKS ON LIGHT AND INSTALL CONNECTOR 146514-02-000.
- 8 MOUNT BOX AND COIL BEHIND REAR STEREO TO SLIDEOUT WALL.

12 INSTALL GASKET ON BACK SIDE OF ONE PLACE AFTER INSTALLATION OF THERMOSTAT, MAKING SURE THAT THE GASKET COVERS AND SEALS THE HOLE THAT THE WIRES PASS THROUGH



- 25E REAR STEREO SYSTEM W/CD
- WIN WINNEBAGO ONLY
- 1TA ITASCA ONLY
- 265 CODES/STANDARDS-CSA/CMVSS
- 1B1 CODES/STANDARDS USA

FIRST USED		06 S40FD	
DO NOT SCALE DRAWING			
TITLE: WIRING INSTL-BODY,12V			
SHEET 2	PART NO	154261	REV

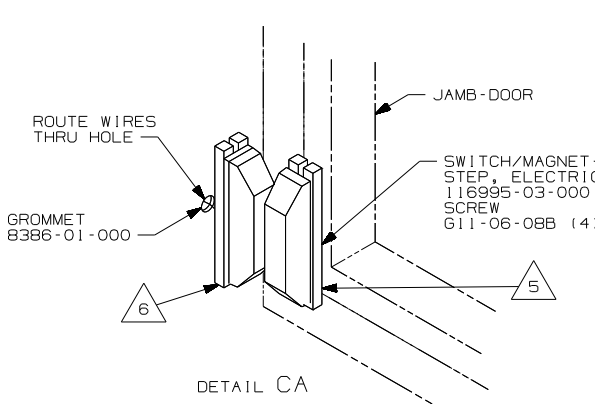


- 13 CUT ROPE LIGHT AT X MARKS ON LIGHT AND INSTALL CONNECTOR 146514-02-000.
- 12 WITHOUT (64J) TIE BACK TO MAIN WIRE ASM.
- 11 ROUTE SLIDEOUT ASM ALONG REAR SLIDEOUT ARM.
- 10 CONNECT TELEPHONE WIRES TO MATCHING COLORS ON PLATE TELEPHONE.
- 9 WIRES ROUTE UP THRU FLOOR IN THIS AREA.
- 8 ROUTE WIRE UNDER CARPET AS SHOWN.
- 7 SEE WIRING INSTL-FRONT END FOR ADDITIONAL INFORMATION.
- 6 MOUNT MAGNET USING PILOT HOLES IN SCREEN DOOR FRAME. MOUNT WITH MAGNET TOWARD SWITCH.
- 5 MOUNT SWITCH AND SPACER TO BLOCK ON JAMB, ADJUST HEIGHT TO MATCH MAGNET.
4. SEE WIRING DIAGRAM-BODY FOR ADDITIONAL INFORMATION.
3. ALL GROUND WIRE TO BE COVERED WITH TUBING 8041-02-000.
2. ALL 110V WIRE TO BE CLAMPED WITH CLAMP 10497-05-000 WITHIN 200 OF OUTLET BOXES, USE SCREW G67-10-12B.
1. ALL WIRES TO BE SECURED WITH CLAMP 10495 OR 10497 OR WIRE TIE 8343 OR 108046 EVERY 600MM, USE SCREW G67-XX-XXX OR G56-XX-XXX AS APPROPRIATE FOR INSTALLATION.

NOTES:

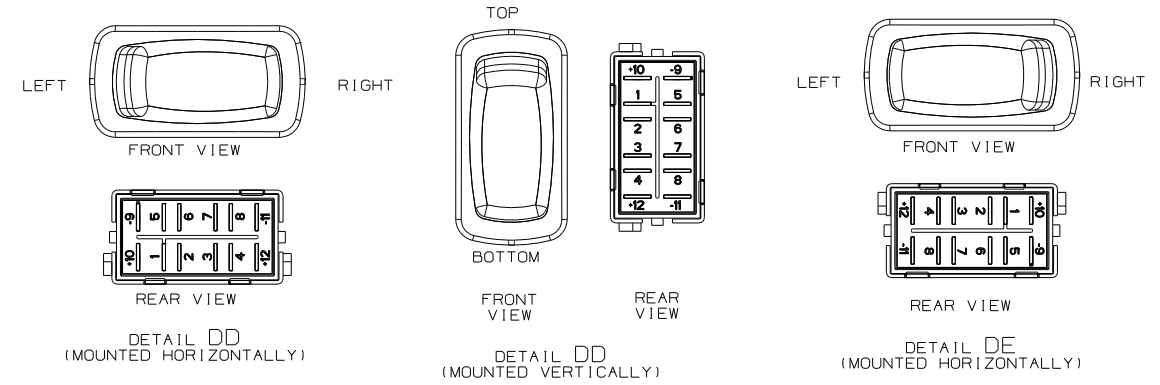
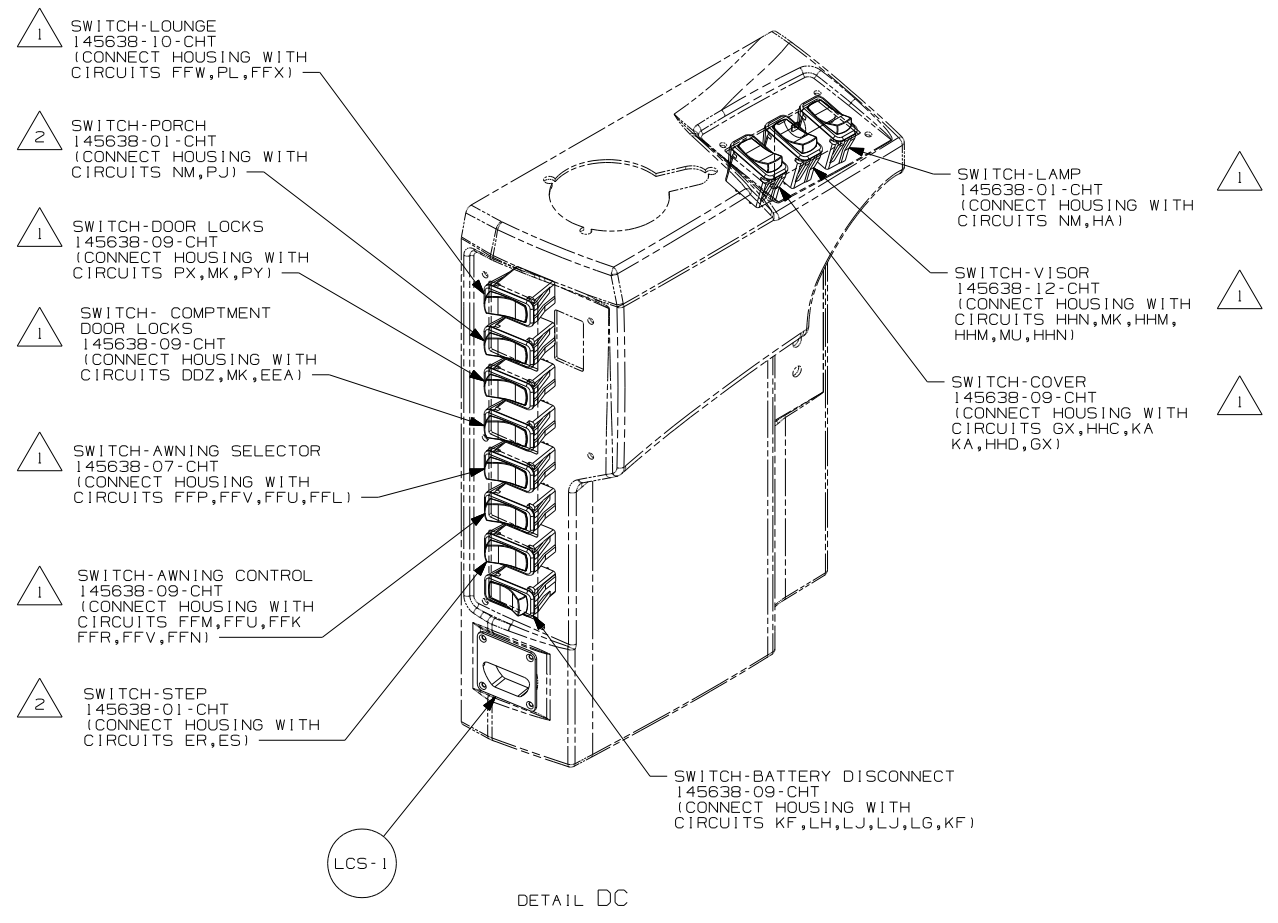
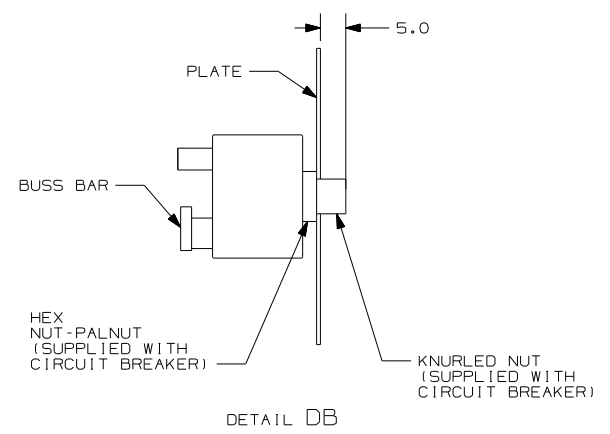
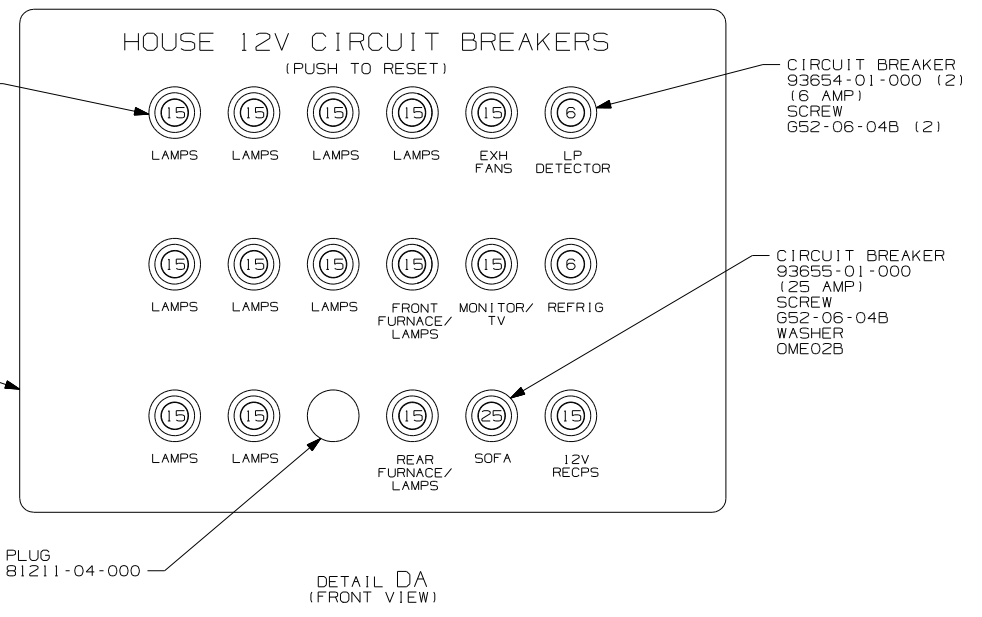
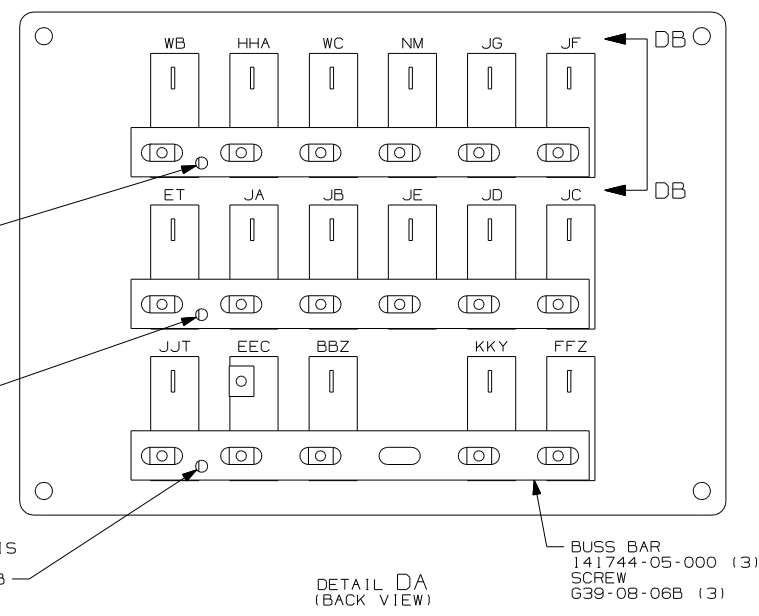
12V AND PHONE JACK LOCATION WITH (14W) OR (21L).

12V AND PHONE JACK LOCATION WITH (21K).



- (64J) SEAT PED-6-WAY DR/PASS POWER
- (21L) DINING TABLE/CHAIRS
- (21K) DINING/COMPUTER TABLE/CHAIRS
- (14W) DINETTE
- (WIN) WINNEBAGO ONLY
- (ITA) ITASCA ONLY
- (265) CODES/STANDARDS-CSA/CMVSS
- (1B1) CODES/STANDARDS USA

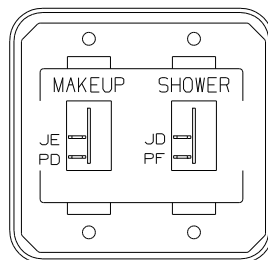
FIRST USED	
06 S40FD	
DO NOT SCALE DRAWING	
TITLE: WIRING INSTL-BODY, 12V	
SHEET 3	PART NO 154261 REV



NOTES:
 2 FOR SWITCH ORIENTATION SEE DETAIL DE.
 1 FOR SWITCH ORIENTATION SEE DETAIL DD.

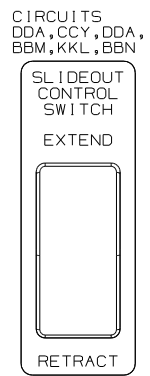
43W CABINET-LAVATORY
 43V CABINET-CHEST OF DRAWERS

FIRST USED		06 S40FD	
DO NOT SCALE DRAWING			
TITLE: WIRING INSTL-BODY, 12V			
SHEET 4	PART NO	154261	REV



SWITCH-ROCKER
135740-01-CHT (2)
SWITCH-BASE
135741-02-CHT
SWITCH-BEZEL
135742-20-CHT
SCREW
G11-08-08U (4)

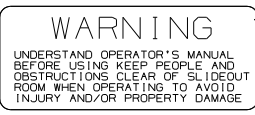
DETAIL EA



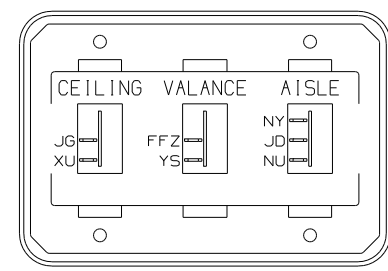
CIRCUITS
DDA, CCY, DDA,
BBM, KKL, BBN

CIRCUITS
DDA, CCY, DDA,
BBM, KKK, BBN

PLATE-SWITCH
144363-09-CHT (2)
SWITCH
108357-06-000 (2)
ACTUATOR
108356-02-CHT (2)
NUT
D65-08-00B (2)
LABEL
116220-01-000 (2)

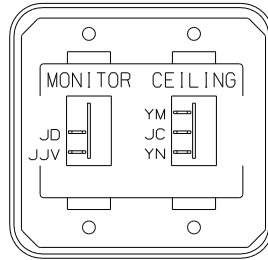


DETAIL EE



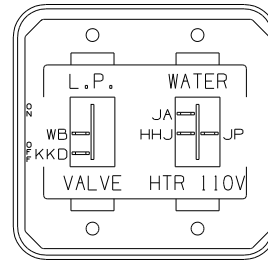
SWITCH-ROCKER
135740-01-CHT (2)
135740-02-CHT
SWITCH-BASE
135741-03-CHT
SWITCH-BEZEL
135742-22-CHT
SCREW
G11-08-08U (4)

DETAIL EK



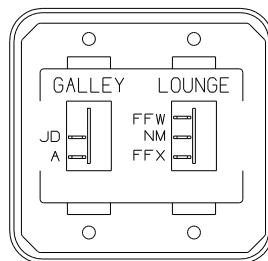
SWITCH-ROCKER
135740-01-CHT
135740-02-CHT
SWITCH-BASE
135741-02-CHT
SWITCH-BEZEL
135742-31-CHT
SCREW
G11-08-08U (4)

DETAIL EB



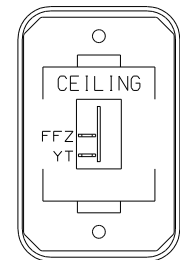
SWITCH-ROCKER
135740-01-CHT
135740-06-CHT
SWITCH-BASE
135741-02-CHT
SWITCH-BEZEL
135742-34-CHT
SCREW
G11-08-08U (4)

DETAIL EL



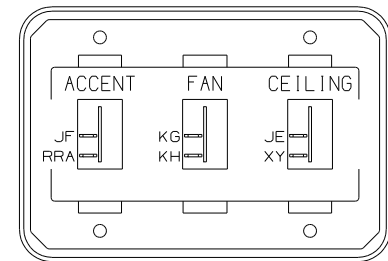
SWITCH-ROCKER
135740-01-CHT
135740-02-CHT
SWITCH-BASE
135741-02-CHT
SWITCH-BEZEL
135742-18-CHT
SCREW
G11-08-08U (4)

DETAIL EC



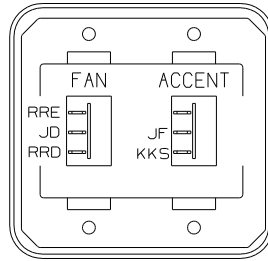
SWITCH-ROCKER
135740-01-CHT
SWITCH-BASE
135741-01-CHT
SWITCH-BEZEL
135742-07-CHT
SCREW
G11-08-08U (2)

DETAIL EF



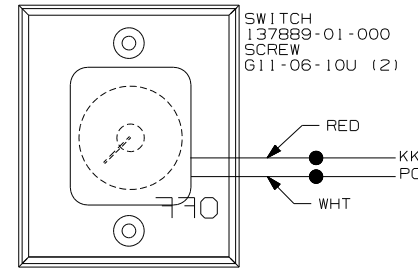
SWITCH-ROCKER
135740-01-CHT (3)
SWITCH-BASE
135741-03-CHT
SWITCH-BEZEL
135742-48-CHT
SCREW
G11-08-08U (4)

DETAIL EM



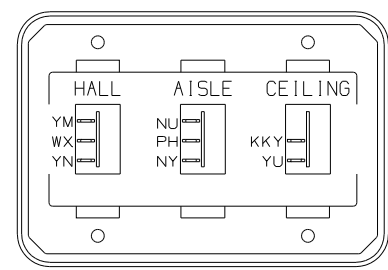
SWITCH-ROCKER
135740-01-CHT
135740-04-CHT
SWITCH-BASE
135741-01-CHT
SWITCH-BEZEL
135742-49-CHT
SCREW
G11-06-16U (4)
WIRE ASM-RESISTOR,FAN
140195-01-000

DETAIL ED (39Y)



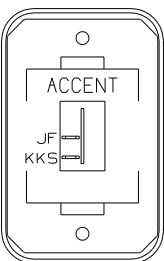
SWITCH
137889-01-000
SCREW
G11-06-10U (2)

DETAIL EG



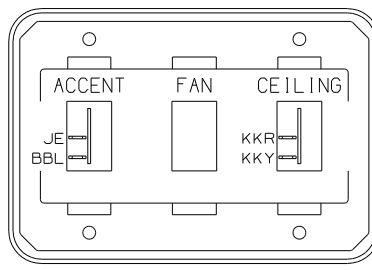
SWITCH-ROCKER
135740-01-CHT
135740-02-CHT (2)
SWITCH-BASE
135741-03-CHT
SWITCH-BEZEL
135742-25-CHT
SCREW
G11-08-08U (4)

DETAIL EH



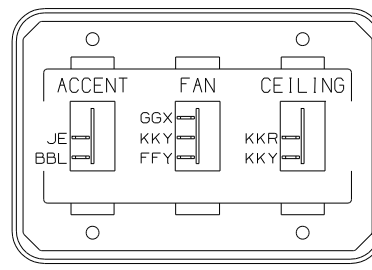
SWITCH-ROCKER
135740-01-CHT
SWITCH-BASE
135741-01-CHT
SWITCH-BEZEL
135742-50-CHT
SCREW
G11-08-08U (2)

DETAIL ED (39B)



SWITCH-ROCKER
135740-01-CHT (2)
SWITCH-BLANK
145754-01-CHT
SWITCH-BASE
135741-03-CHT
SWITCH-BEZEL
135742-48-CHT
SCREW
G11-08-08U (4)

DETAIL EJ



SWITCH-ROCKER
135740-01-CHT (2)
135740-04-CHT
SWITCH-BASE
135741-03-CHT
SWITCH-BEZEL
135742-48-CHT
SCREW
G11-08-08U (4)
WIRE ASM-RESISTOR,FAN
140195-01-000

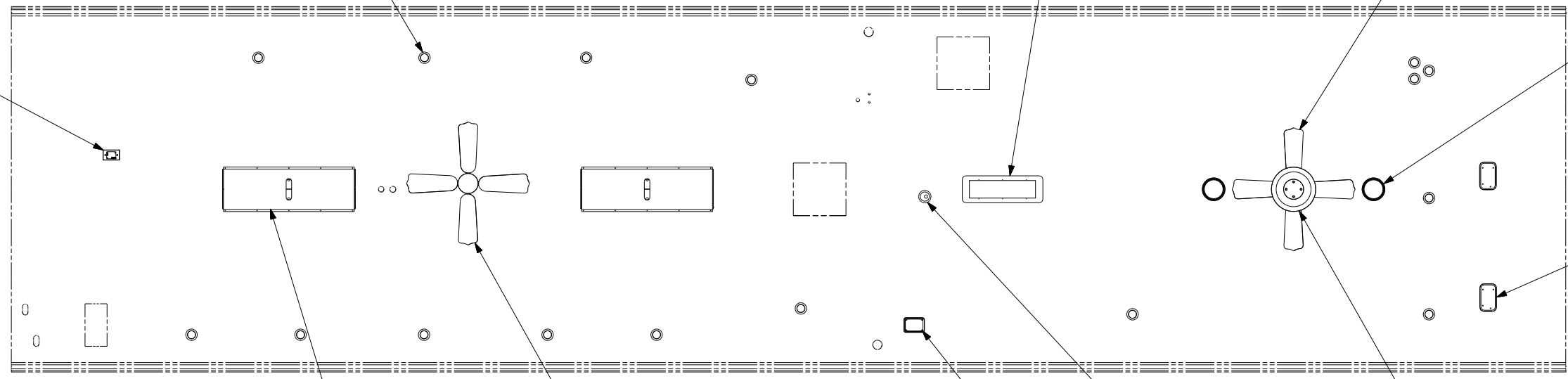
DETAIL EJ (41Y)

- (41Y) FAN - CEILING_BEDROOM
- (39Y) FAN - CEILING LOUNGE
- (39B) FAN-CEILING-WITHOUT
- (265) CODES/STANDARDS-CSA/CMVSS
- (1B1) CODES/STANDARDS USA

FIRST USED	06 S40FD
TITLE	DO NOT SCALE DRAWING
WIRING INSTL-BODY, 12V	
SHEET 5	PART NO 154261 REV

NOTES:
CONNECT WIRE ASM-RESISTOR,FAN TO 2 PIN HOUSING LOCATED BY THE SWITCH WIRES.

SATILLITE ELEVATION SENSOR
DETAIL GA



FAN
139134-SCREW
G39-10-16U (3)
CONNECTOR
58028-01-000 (2)
DETAIL HE
(CIRCUIT PC NOT USED)

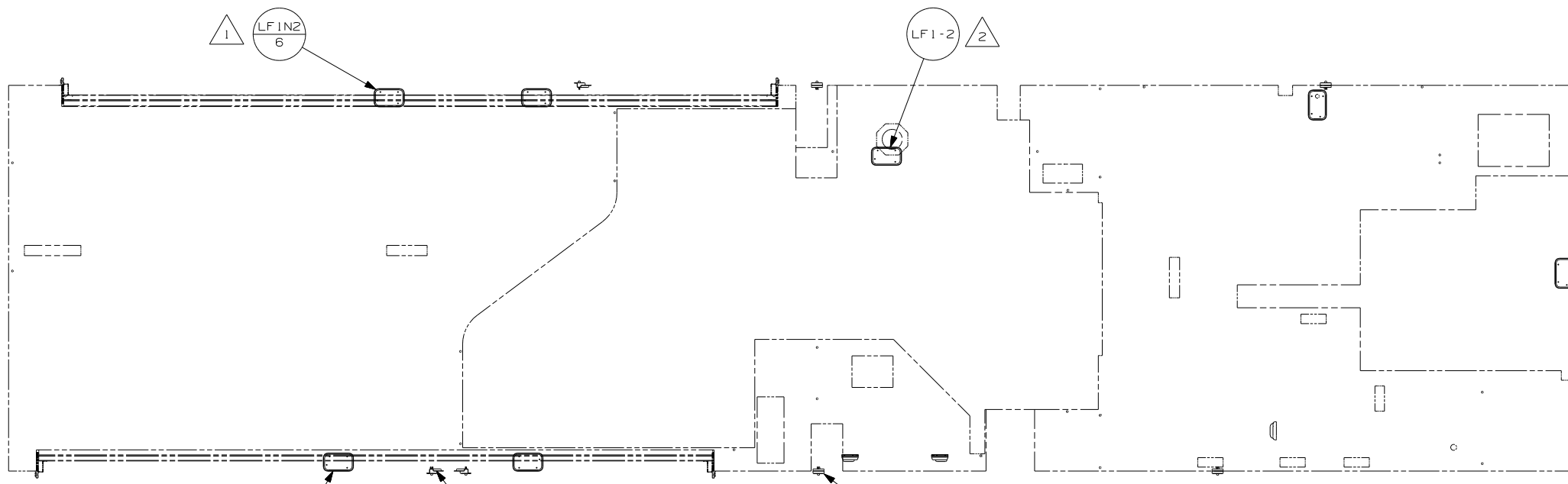
LIGHT-CEILING
93575-40-CHT (2)
BULB
117805-02-000 (2)
SCREW
G39-08-16U (4)
CONNECTOR
58028-01-000 (4)

LIGHT-FLUORESCENT
133416-04-000 (4)
BULB
(SUPPLIED WITH LAMP)
BRACKET
133077-02-CHT (2)
SCREW
G39-08-12U (20)

FAN
139134-SCREW
G39-10-16U (3)
CONNECTOR
58028-01-000 (2)
DETAIL HF

LIGHT
146048-01-000
SCREW
G11-08-16U (2)
CONNECTOR
58028-01-000 (2)

LIGHT
93575-33-CHT
BULB
117805-02-000 (4)
SCREW
G39-08-32U (4)
CONNECTOR
58028-01-000 (2)



WASHER-PLASTIC
87080-02-CHT (6)

SWITCH-PUSHBUTTON
41250-01-000 (2)
BRACKET-SWITCH,LIGHT
138494-01-CHT (2)
SCREW
G39-08-12T (4)
G55-08-12B (4)
SCREW COVER
93249-01-000 (8)
WASHER-PLASTIC
87080-02-CHT (2)

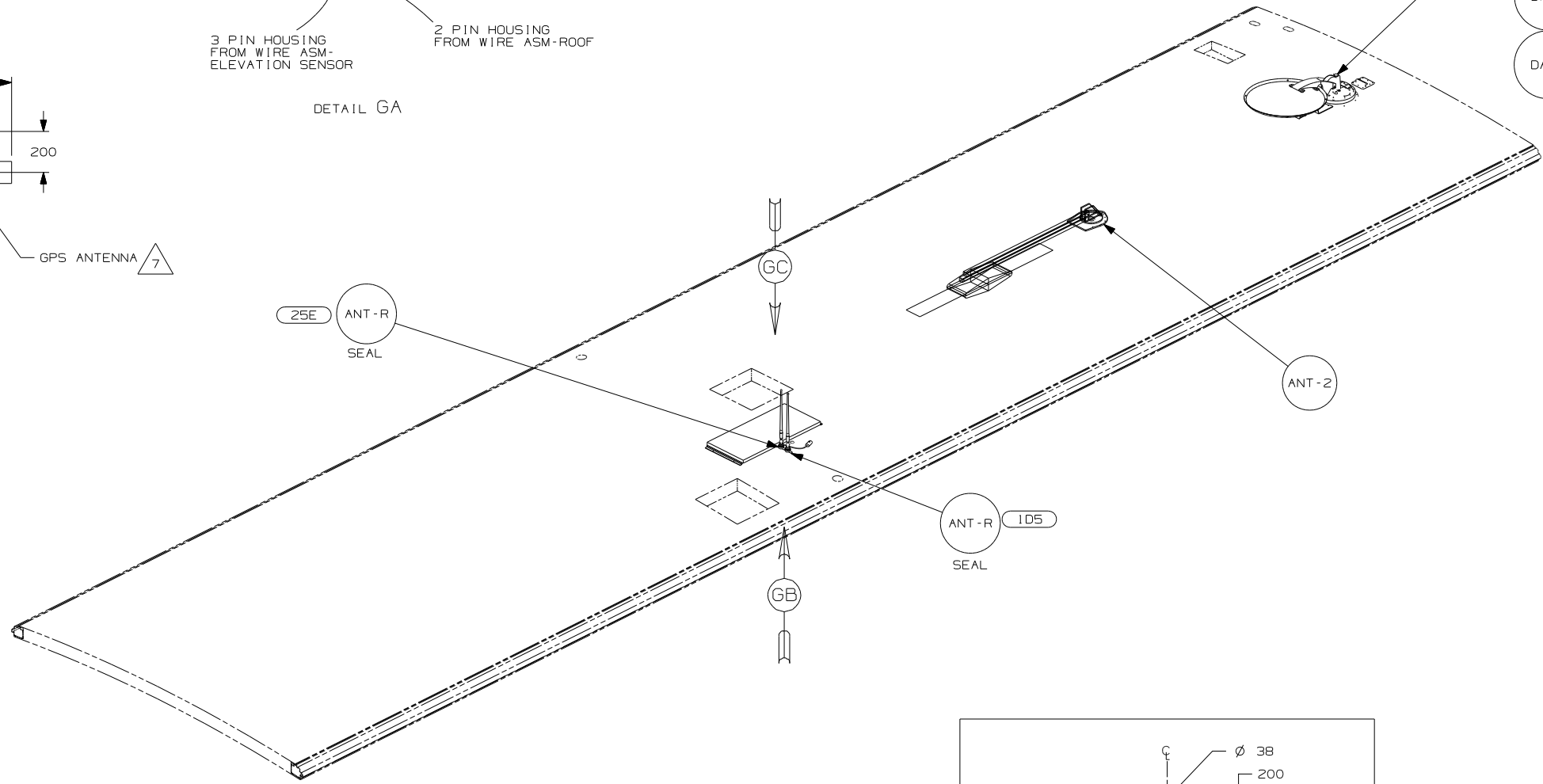
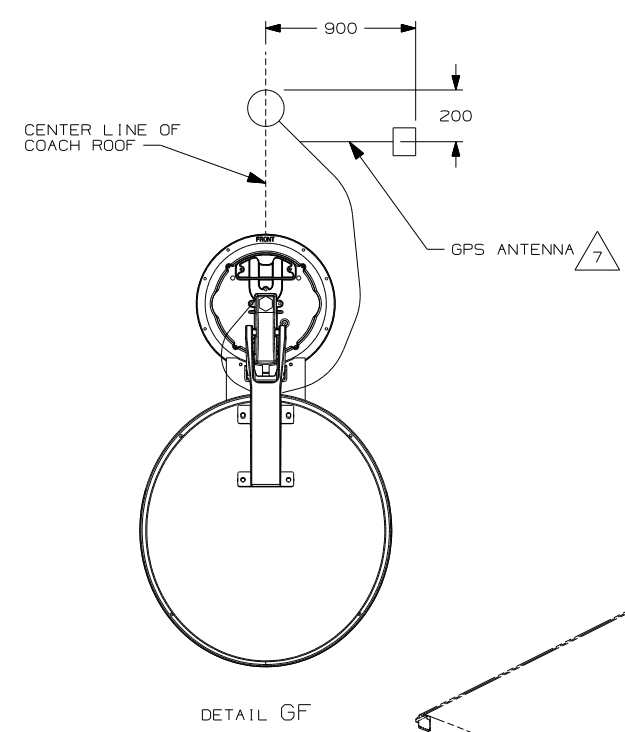
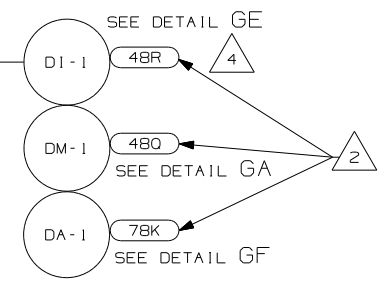
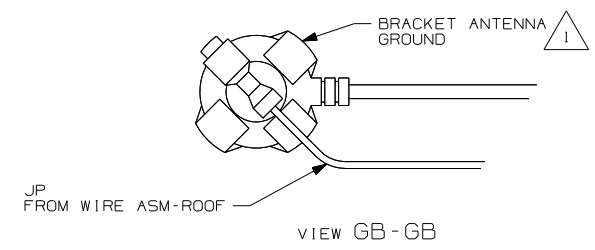
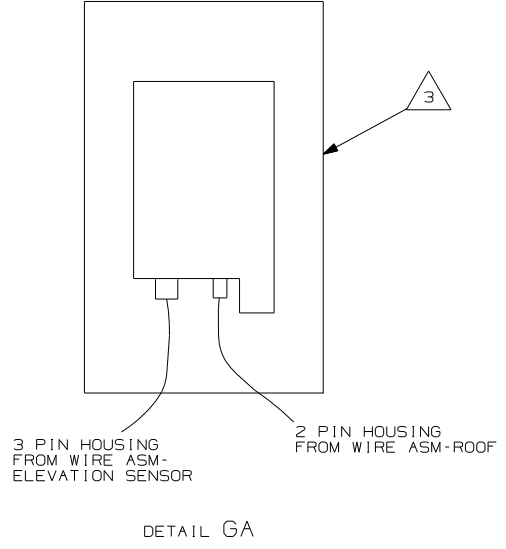
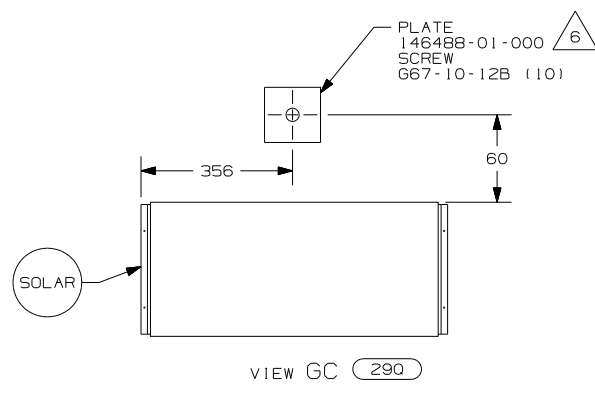
SWITCH-PUSHBUTTON
41250-01-000 (5)
BRACKET-SWITCH,LIGHT
138494-01-CHT (5)
SCREW
G39-08-12T (10)
G55-08-12B (10)
SCREW COVER
93249-01-000 (20)

- 4 APPLY LOCTITE P/N 62917-06-000 TO FAN BLADES MOUNTING NUT THREADS.
- 3 CENTER FAN OVER 25mm HOLE IN ROOF.
- 2 LIGHT MOUNTED ON PANEL ASM-COMPT.
- 1 LAMPS TO BE MOUNTED 75±20 FROM EDGE OF FLOOR.

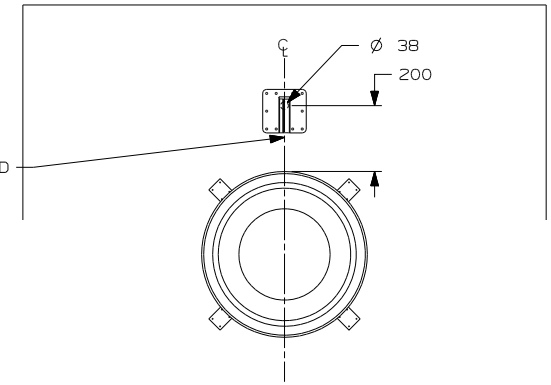
NOTES:

- 412 DECORATIVE LIGHT - CEILING
- 41Y FAN - CEILING_BEDROOM
- 39Y FAN - CEILING LOUNGE
- 265 CODES/STANDARDS-CSA/CMVSS
- 1B1 CODES/STANDARDS USA

FIRST USED	06 S40FD
TITLE	DO NOT SCALE DRAWING
TITLE	WIRING INSTL-BODY, 12V
SHEET 6	PART NO 154261
	REV



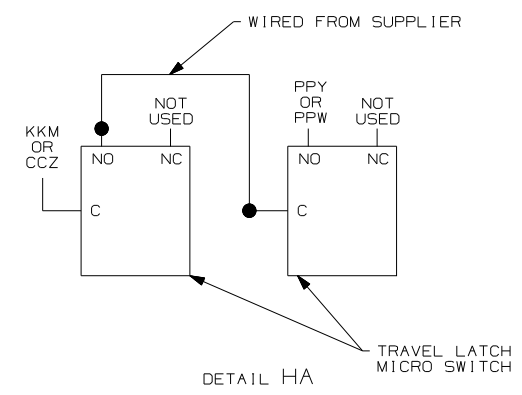
THE COAX CONNECTION IS TO BE PLACED ON THE CENTERLINE OF THE MOTORHOME FACING FORWARD



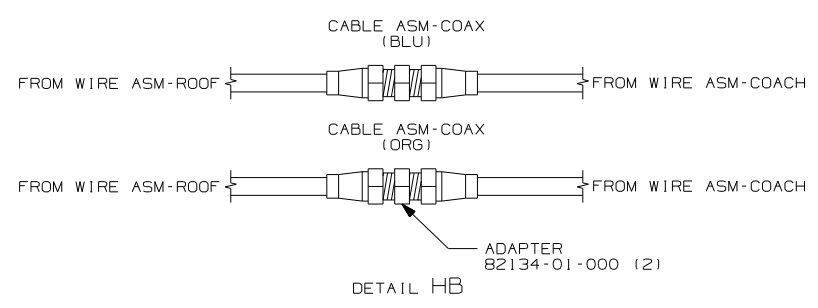
- NOTES:
- 7 MOUNT GPS ANTENNA TO THE RIGHT OF THE SATELLITE AS SHOWN. SECURE CABLE WITH ROOF SEALANT.
 - 6 SEAL
 - 5 REMOVE ALL SHIPPING RESTRAINTS AND FIRMLY INSERT THE SUPPLIED PLUGS INTO THE APPROPRIATE SIZED HOLES AS SPECIFIED IN THE INSTALLATION PROCESS.
 - 4 SEE DETAIL GE FOR SATELLITE LOCATION.
 - 3 SENSOR SUPPLIED WITH SATELLITE ASSEMBLY.
 - 2 SEE MANUFACTURER'S INSTALLATION FOR ADDITIONAL INFORMATION.
 - 1 WRAP BRACKET LEGS AROUND ANTENNA BASE.

- 48R SAT. SYS. IN-MOTION W/O RCVR.
- 290 SOLAR PANEL - 10 WATT
- 25E REAR STEREO SYSTEM W/CD
- 105 ENTERTAINMENT CTR/EXT W/CD
- 78K SATELLITE DISH-AUTOMATIC
- 480 SATELLITE DISH & ELEV.SENSOR
- 265 CODES/STANDARDS-CSA/CMVSS
- 1B1 CODES/STANDARDS USA

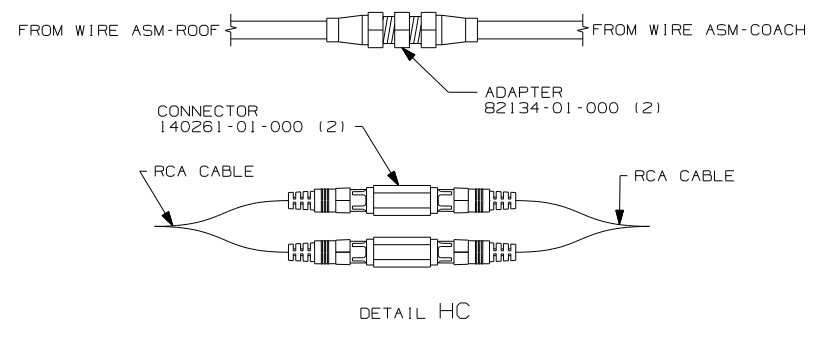
FIRST USED		06 S40FD	
DO NOT SCALE DRAWING			
TITLE: WIRING INSTL - BODY, 12V			
SHEET 7	PART NO	154261	REV



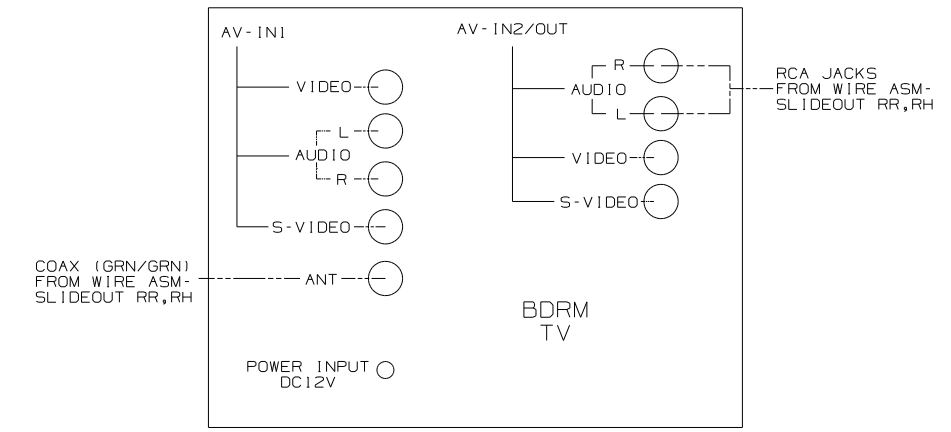
DETAIL HA



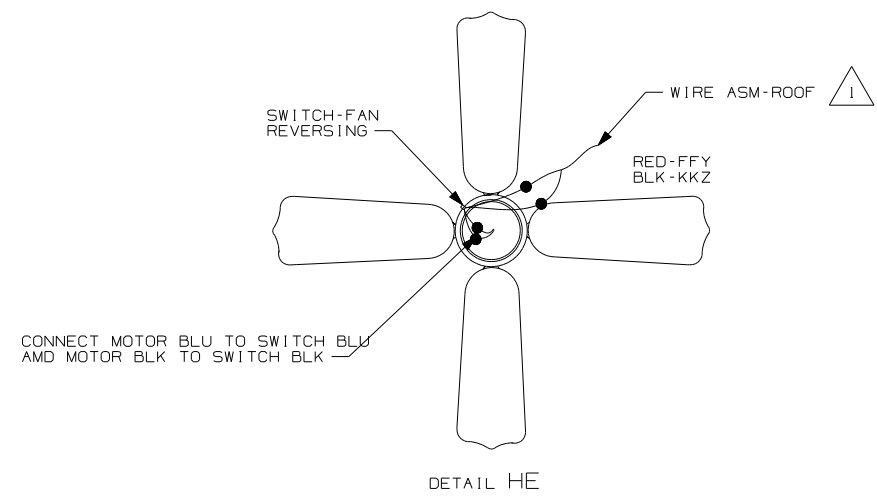
DETAIL HB



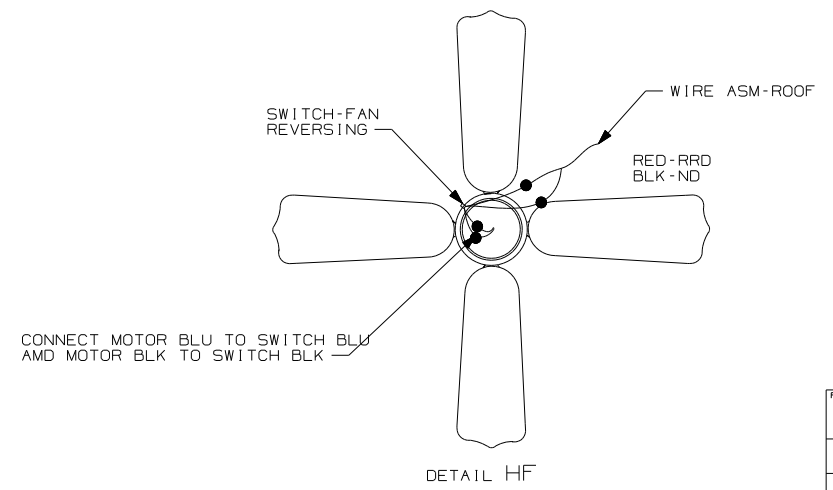
DETAIL HC



DETAIL HD 2



DETAIL HE



DETAIL HF

2 AV2-IN/OUT NEEDS TO BE SET AS AN OUTPUT TERMINAL. SELECT "PRESET" IN THE MENU AND SET AV2-IN/OUT TO "OUT". ONCE THIS IS DONE THE OUTPUT VOLUME IS VARIABLE AND THE TV SPEAKERS ARE MUTE. SEE TELEVISION OWNERS MANUAL FOR ADDITIONAL INFORMATION.

1 TIE BACK CIRCUIT PC.

NOTES:

FIRST USED	06 S40FD		
TITLE	DO NOT SCALE DRAWING		
	WIRING INSTL - BODY, 12V		
SHEET 8	PART NO	154261	REV