



**DANGER**

**Danger of electrical shock, burns or death.** Always remove all power sources before attempting any repair, service or diagnostic work. Power can be present from shore power, generator, inverter or battery. All power sources must be disabled and secured before performing any service.

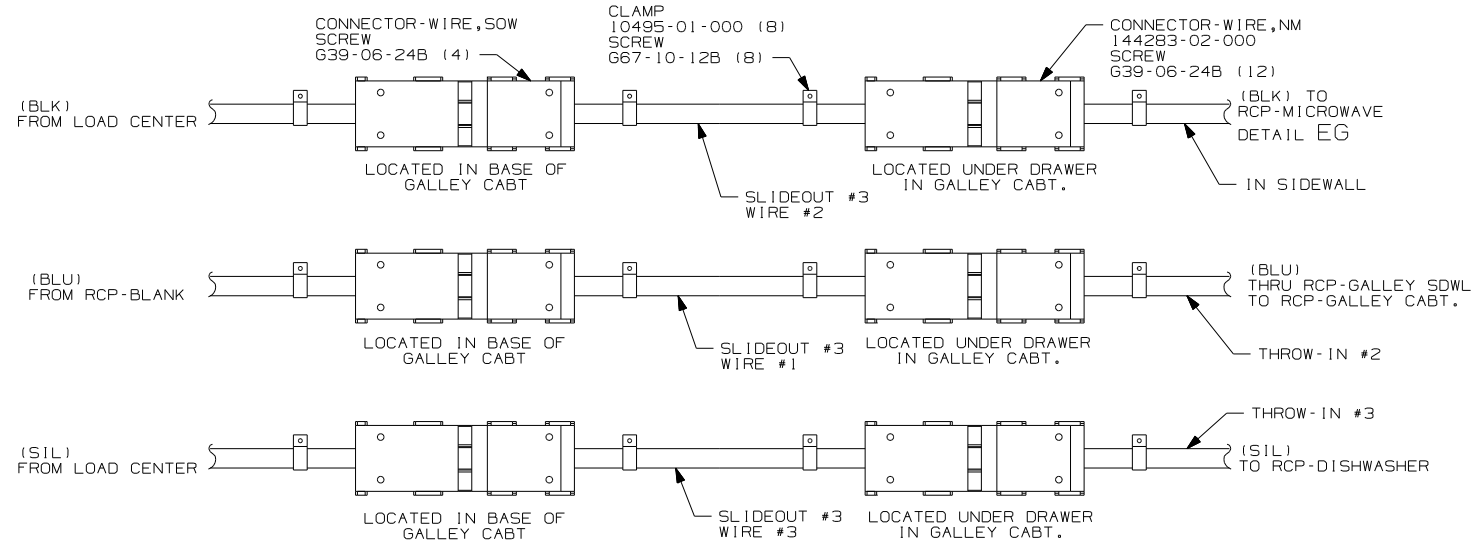


**CAUTION**

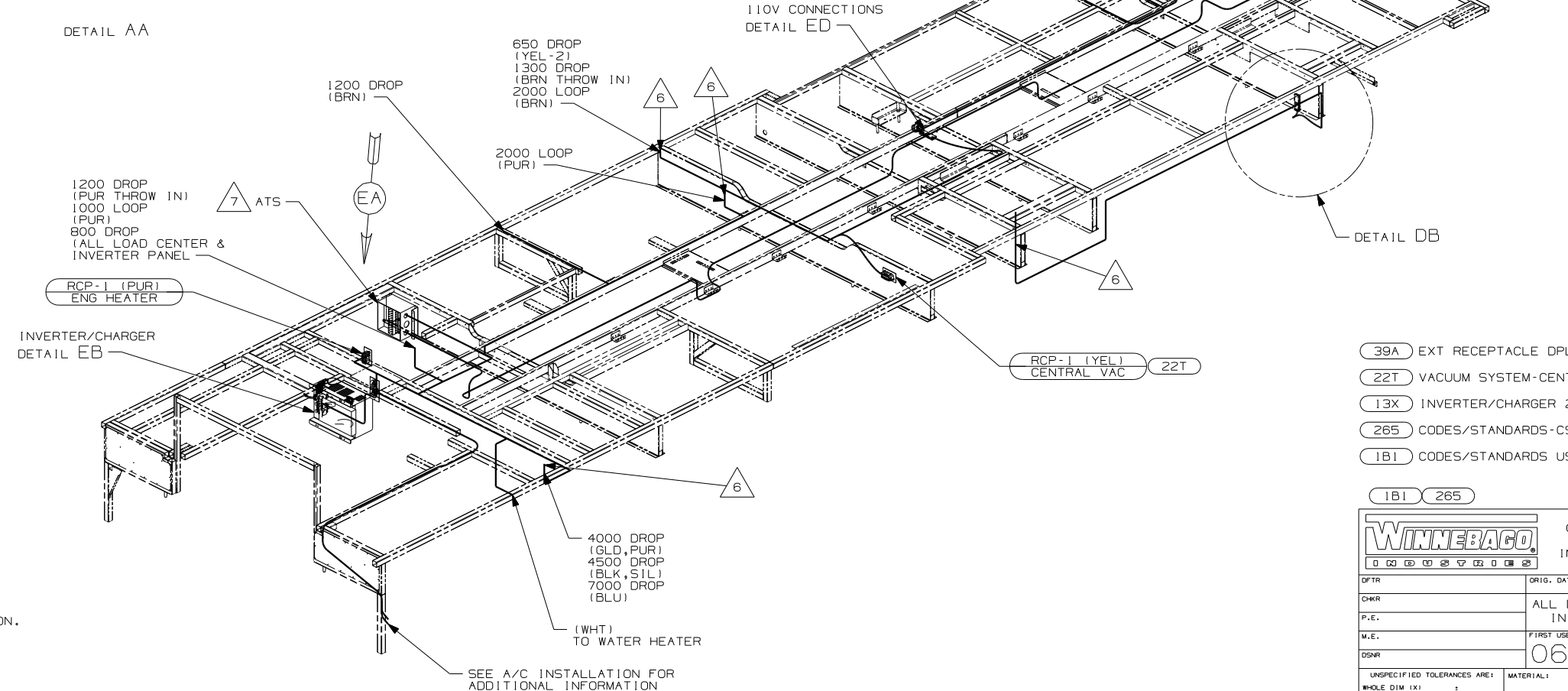
If you lack the skills, tools or equipment to perform diagnostic or repair work leave such work to an authorized Winnebago Industries dealer or other qualified shop.

DRAWING NO.	FEATURE
153050-01	.....
153050-14	(1B1) (78J) (13X)
153050-18	(265) (78J) (13X)

RELEASE	REV DATE	DWG NO	153050
REV ZONE	REVISION RECORD	DATE	DTR-0R16



DETAIL AA



- △ 7 SEE LOAD CENTER/ATS ASM FOR ADDITIONAL INFORMATION.
- △ 6 TO ABOVE FLOOR.
- △ 5 SEE GENERATOR INSTALLATION FOR ADDITIONAL INFORMATION.
- △ 4 SEE EXT ENT CTR COMPT FOR ADDITIONAL INFORMATION.

3. WIRES THAT REST ON WIRE TRAYS ARE TO BE TIED DOWN WITH WIRE TIE 8343-04-000.
2. CLAMP TO FLOOR SUPPORT TUBES AS NECESSARY WITH CLAMP 10497-01-000.
1. ALL WIRES TO BE SECURED WITH CLAMP 10495 OR 10497 OR WIRE TIE 8343 OR 108046 EVERY 600MM, USE SCREW 667-XX-XXX OR 656-XX-XXX AS APPROPRIATE FOR INSTALLATION.

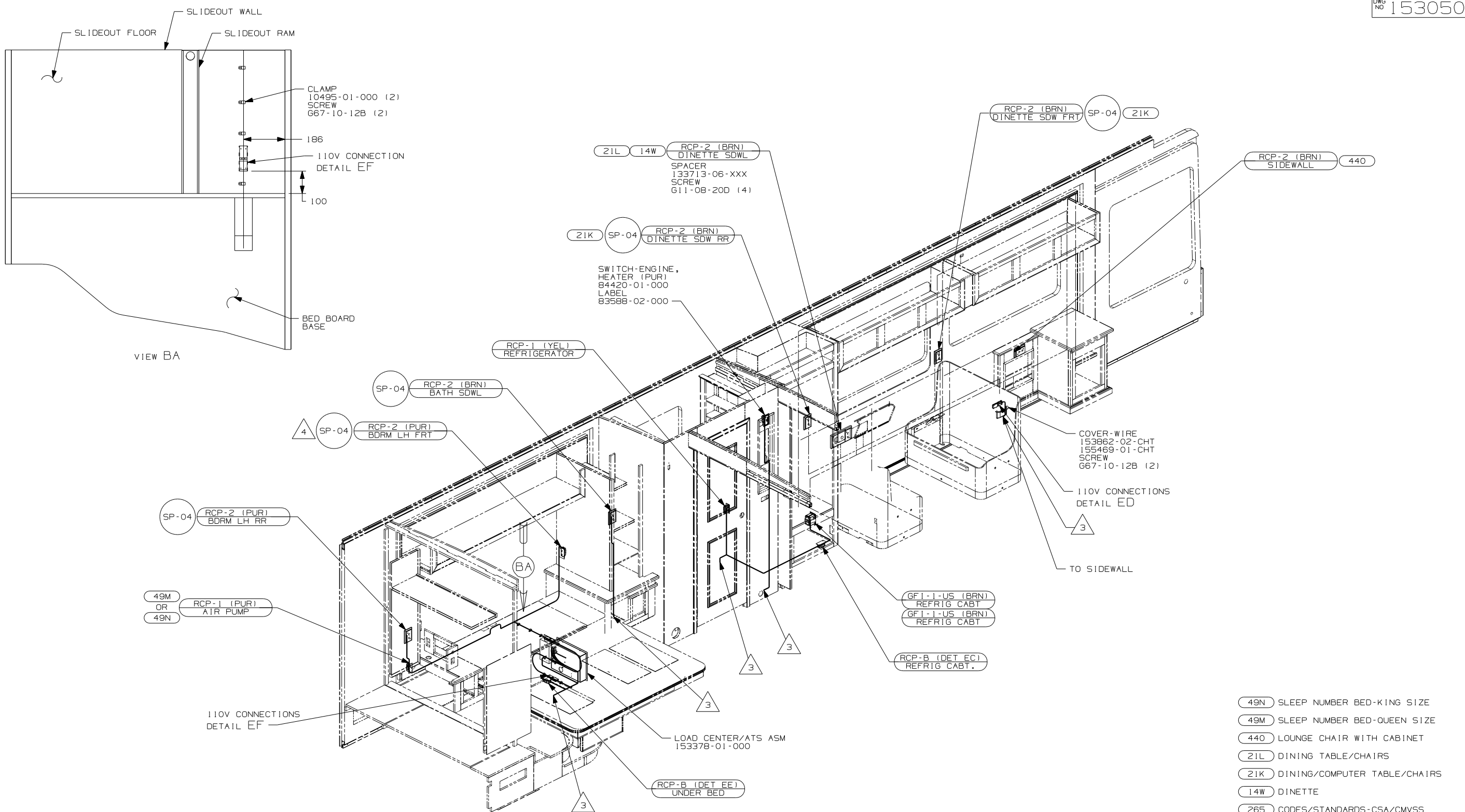
NOTES:

- (39A) EXT RECEPTACLE DPLX 120VAC
- (22T) VACUUM SYSTEM-CENTRAL
- (13X) INVERTER/CHARGER 2.0 KW
- (265) CODES/STANDARDS-CSA/CMVSS
- (1B1) CODES/STANDARDS USA

<b>WINNEBAGO</b>		COPYRIGHT 2004 WINNEBAGO INDUSTRIES, INC.	
DTR	ORIG. DATE		
CHKR	ALL DIMENSIONS ARE IN MILLIMETERS		
P.E.			
M.E.	FIRST USED	06 R40KD	
DSNR			
UNSPECIFIED TOLERANCES ARE:		MATERIAL:	
WHOLE DIM (X)	:		
ONE-PLACE (X.X)	:		
TWO-PLACE (X.XX)	:		
ANGLE	:		
THIRD ANGLE PROJECTION			
DO NOT SCALE DRAWING			
TITLE: WIRING INSTL-BODY 110V			
SHEET 1 OF 5		PART NO 153050	
REF:		1 12/2/2005	

FOR ELECTRICAL  
TORQUE  
SPECIFICATIONS  
SEE DWG NO.  
128783-01-000

(X-X)  
FOR  
ELECTRICAL  
CALLOUTS  
SEE DWG NO.  
121339-01-000



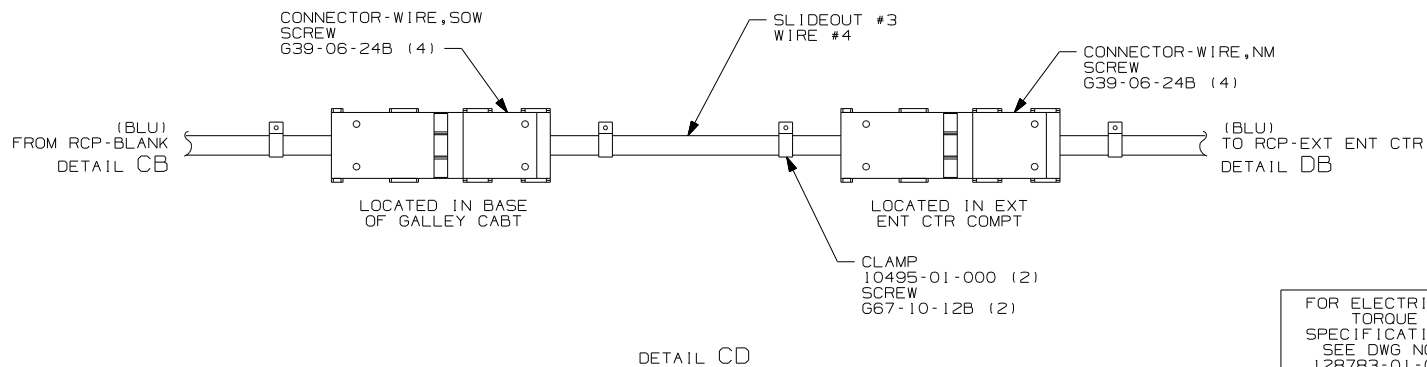
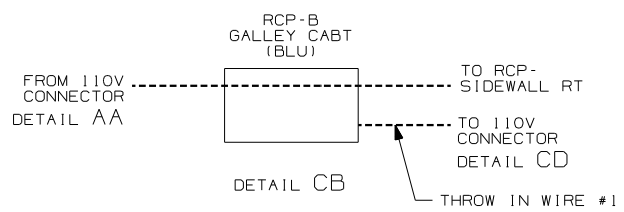
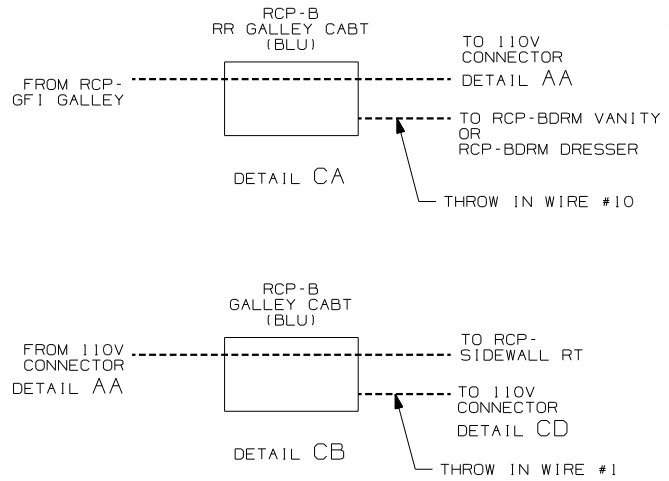
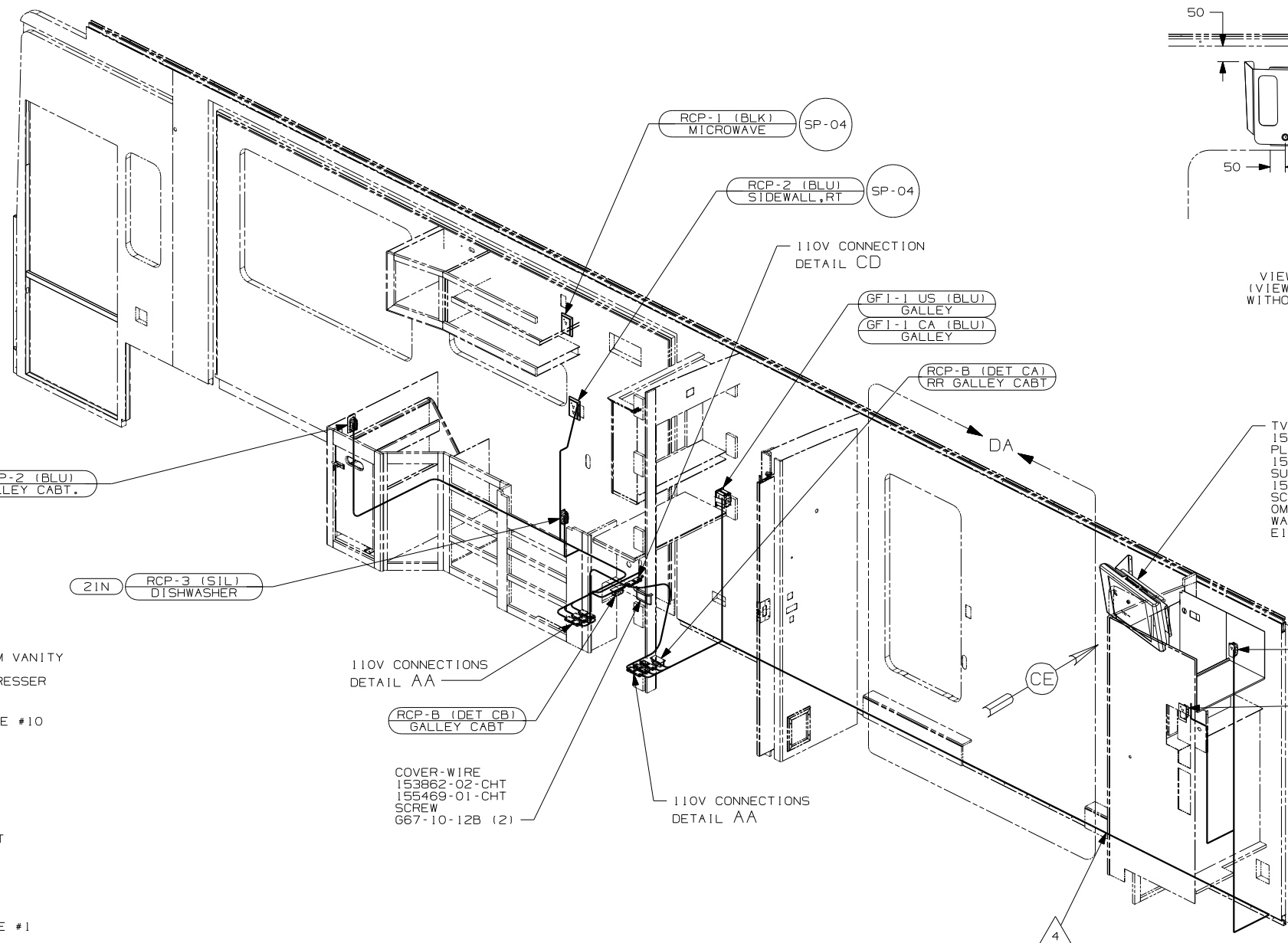
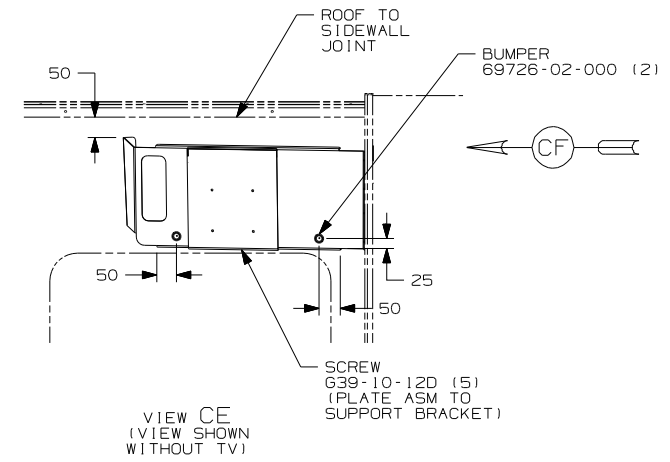
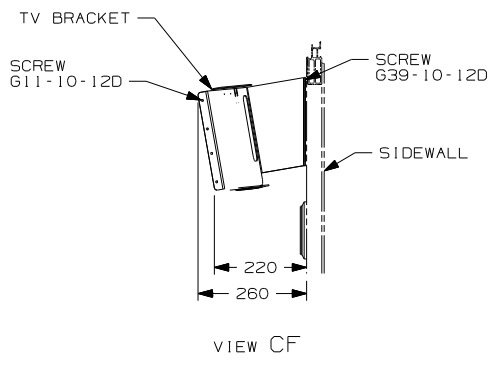
- NOTES:
- 1. ALL WIRES TO BE SECURED WITH CLAMP 10495 OR 10497 OR WIRE TIE 8343 OR 108046 EVERY 600MM, USE SCREW G67-XX-XXX OR G56-XX-XXX AS APPROPRIATE FOR INSTALLATION.
  - 2. ALL 110V WIRES TO BE CLAMPED WITH CLAMP 10497-05-000 WITHIN 200mm OF OUTLET BOXES, USE SCREW G67-10-12B.

- (49N) SLEEP NUMBER BED-KING SIZE
- (49M) SLEEP NUMBER BED-QUEEN SIZE
- (440) LOUNGE CHAIR WITH CABINET
- (21L) DINING TABLE/CHAIRS
- (21K) DINING/COMPUTER TABLE/CHAIRS
- (14W) DINETTE
- (265) CODES/STANDARDS-CSA/CMVSS
- (1B1) CODES/STANDARDS USA

FOR ELECTRICAL TORQUE SPECIFICATIONS SEE DWG NO. 128783-01-000

(X-X) FOR ELECTRICAL CALLOUTS SEE DWG NO. 121339-01-000

FIRST USED	
06 R40KD	
DO NOT SCALE DRAWING	
TITLE: WIRING INSTL-BODY 110V	
SHEET 2	PART NO 153050



- TV-20"
- 156017-01-000
- PLATE ASM-MOUNTING, TV
- 157484-01-CHT
- SUPPORT-MOUNTING, TV
- 157466-01-CHT
- SCREW
- OMG02B-04-012 (4)
- WASHER
- E14-10-00B (4)

- RCP-3 (PUR) TV
- RCP-1 (GLD) WASHER/DRYER
- LABEL 158542-01-CHT
- 21M 265

- 21M WASHER/DRYER PREP
- 10B TV-LCD(REAR)EXCHANGE
- 21N DISHWASHER/BUILT-IN
- 265 CODES/STANDARDS-CSA/CMVSS
- 1B1 CODES/STANDARDS USA

- 4 TO BELOW FLOOR.
- 3 WIRE FROM ROOF ASM.

2. ALL 110V WIRES TO BE CLAMPED WITH CLAMP 10497-05-000 WITHIN 200mm OF OUTLET BOXES, USE SCREW G67-10-12B.

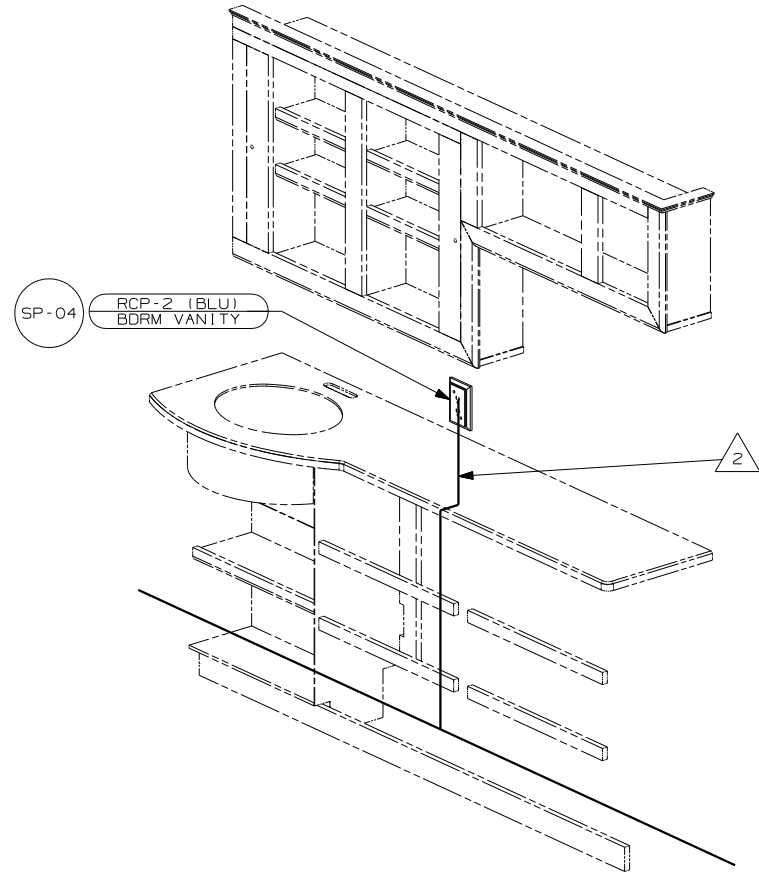
1. ALL WIRES TO BE SECURED WITH CLAMP 10495 OR 10497 OR WIRE TIE 8343 OR 108046 EVERY 600MM, USE SCREW G67-XX-XXX OR G56-XX-XXX AS APPROPRIATE FOR INSTALLATION.

NOTES:

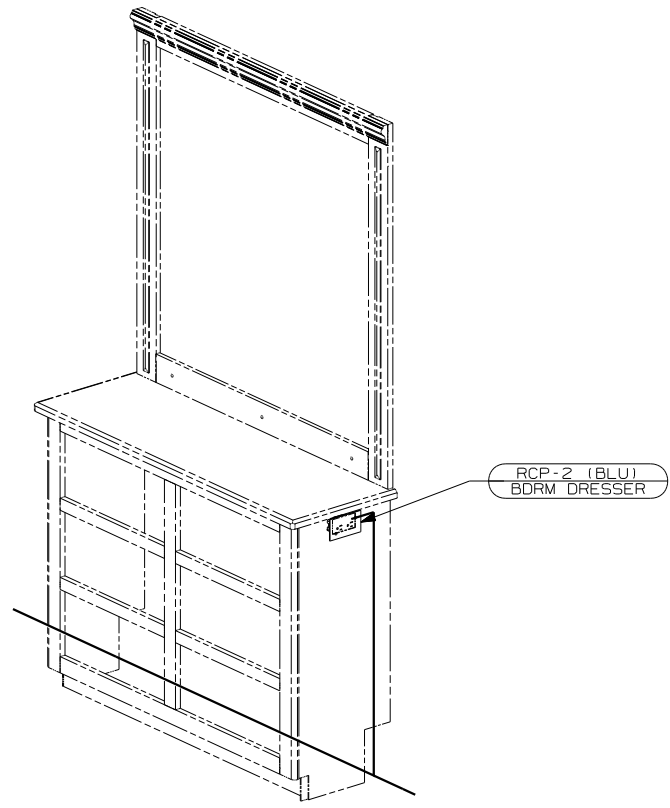
FOR ELECTRICAL TORQUE SPECIFICATIONS SEE DWG NO. 128783-01-000

FOR ELECTRICAL CALLOUTS SEE DWG NO. 121339-01-000

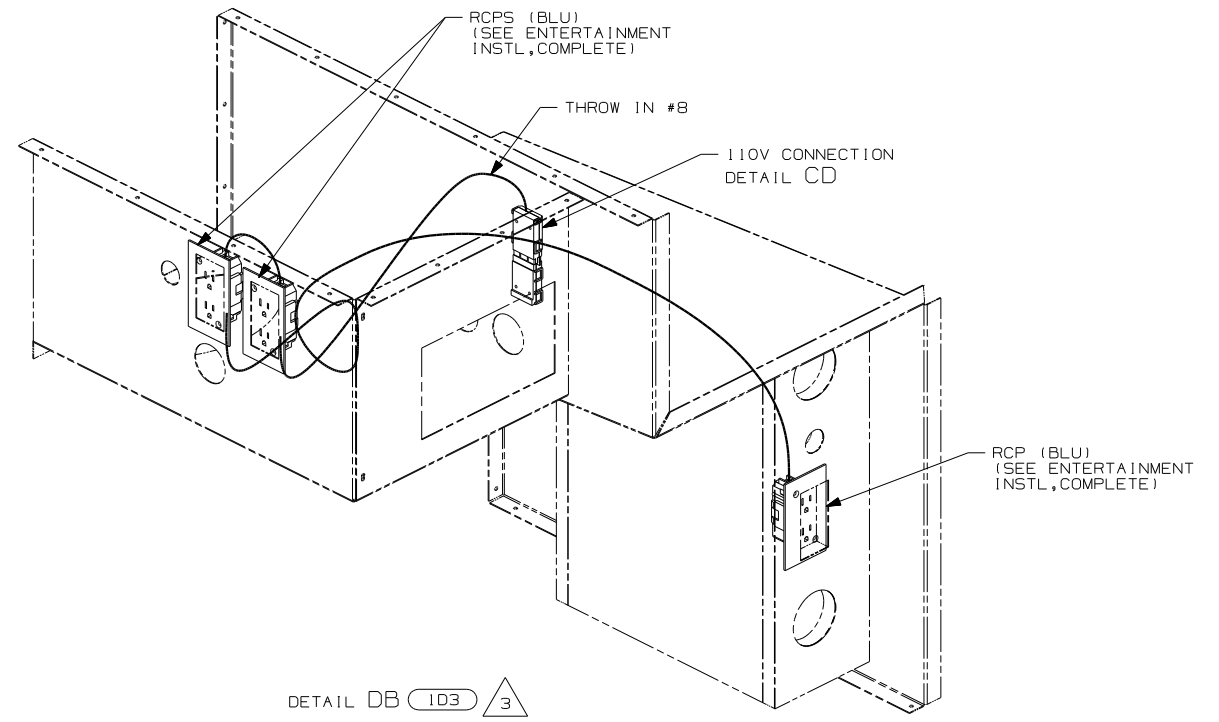
FIRST USED	
06 R40KD	
DO NOT SCALE DRAWING	
TITLE:	
WIRING INSTL-BODY 110V	
SHEET 3	PART NO
	153050



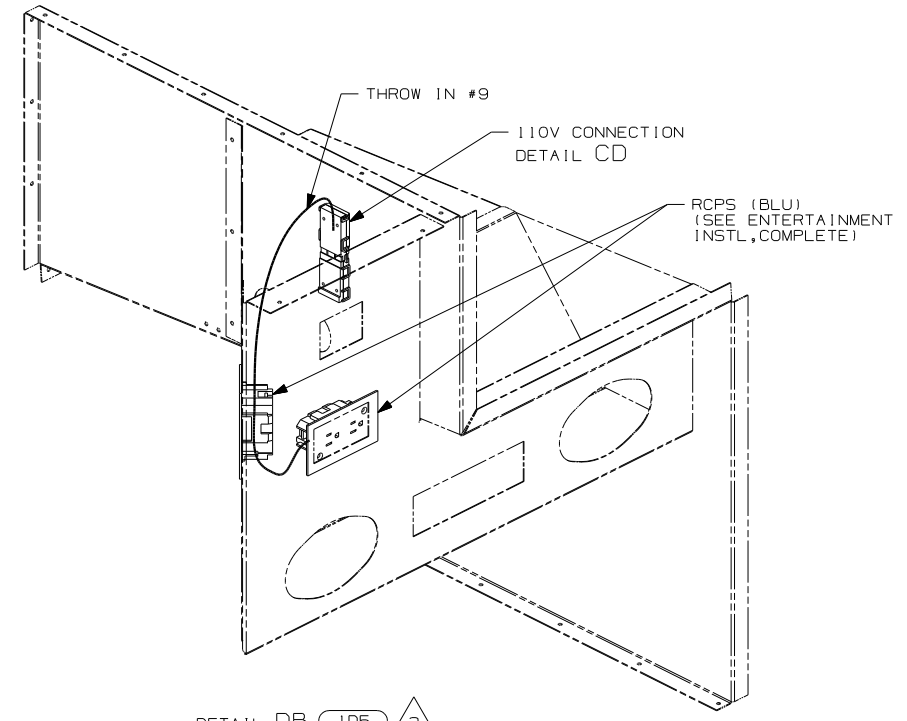
DETAIL DA 43W



DETAIL DA 43V



DETAIL DB 1D3 3



DETAIL DB 1D5 3

- 43W CABINET-LAVATORY
- 43V CABINET-CHEST OF DRAWERS
- 1D5 ENTERTAINMENT CENTR/EXT W/CD
- 1D3 ENTERTAIN CENTR/EXT TV-DVD
- 265 CODES/STANDARDS-CSA/CMVSS
- 1B1 CODES/STANDARDS USA

1B1 265

- 3 SEE ENT CTR COMPLETE FOR ADDITIONAL INFORMATION.
- 2 ROUTE WIRE IN SIDEWALL DURING INSTALLATION.

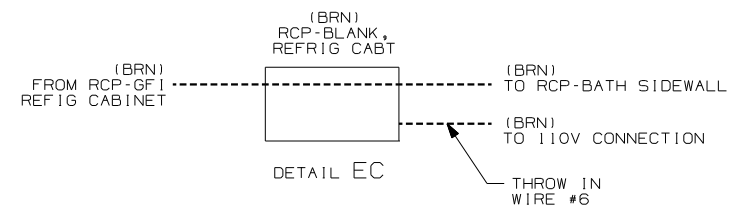
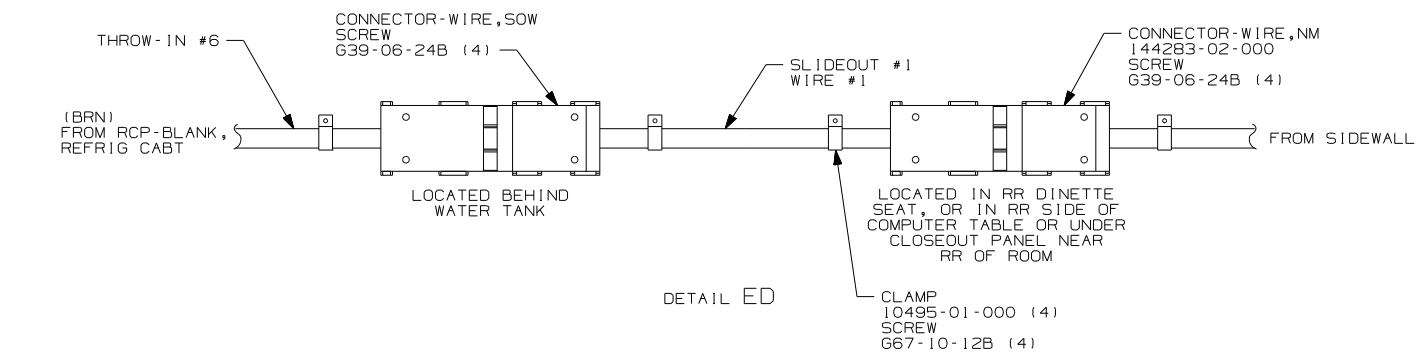
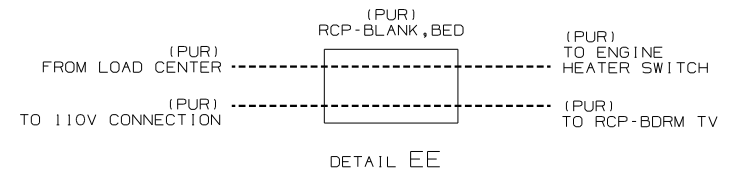
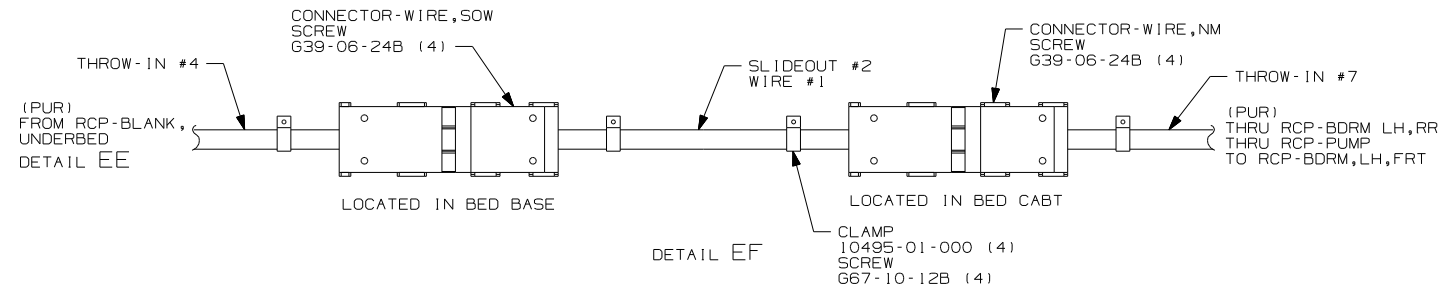
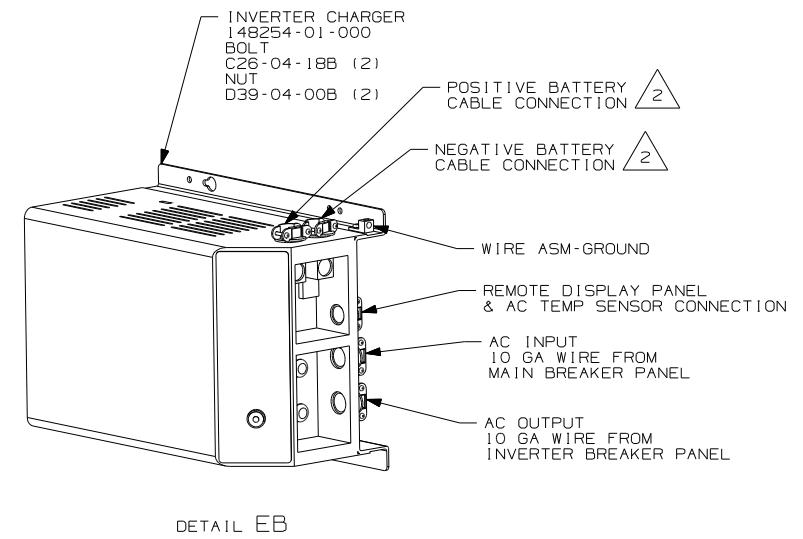
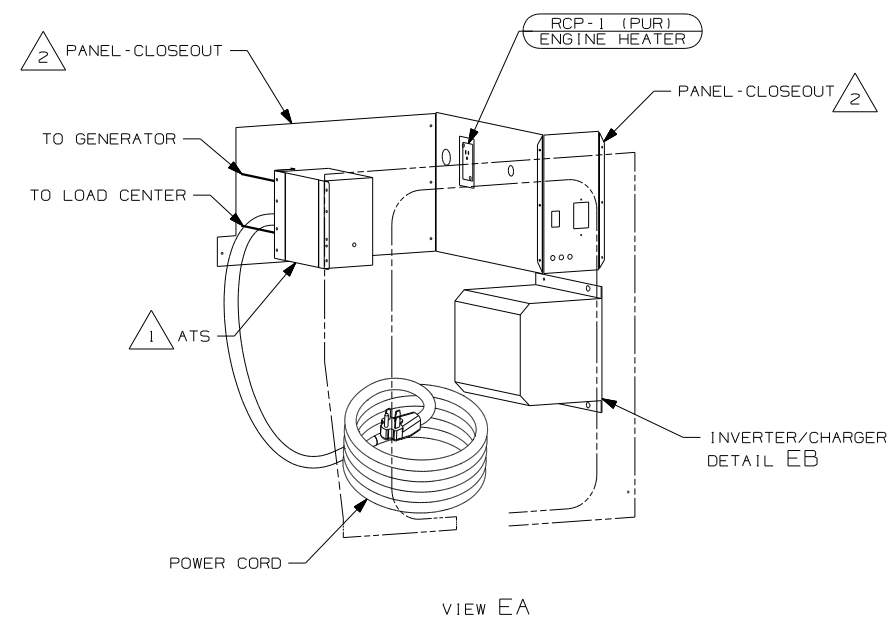
1. ALL WIRES TO BE SECURED WITH CLAMP 10495 OR 10497 OR WIRE TIE 8343 OR 108046 EVERY 600MM, USE SCREW G67-XX-XXX OR G56-XX-XXX AS APPROPRIATE FOR INSTALLATION.

NOTES:

FOR ELECTRICAL TORQUE SPECIFICATIONS SEE DWG NO. 128783-01-000

X-X FOR ELECTRICAL CALLOUTS SEE DWG NO. 121339-01-000

FIRST USED	
06 R40KD	
DO NOT SCALE DRAWING	
TITLE: WIRING INSTL-BODY 110V	
SHEET 4	PART NO 153050



NOTES:  
 2 SEE WIRING INSTL-CHASSIS FOR ADDITIONAL INFORMATION.  
 1 SEE LOAD CENTER/ATS ASM FOR ADDITIONAL INFORMATION.

FOR ELECTRICAL TORQUE SPECIFICATIONS SEE DWG NO. 128783-01-000

FOR ELECTRICAL CALLOUTS SEE DWG NO. 121339-01-000

265 CODES/STANDARDS - CSA/CMVSS  
 1B1 CODES/STANDARDS - USA  
 1B1 265

FIRST USED	06 R40KD
TITLE	DO NOT SCALE DRAWING
	WIRING INSTL-BODY 110V
SHEET 5	PART NO 153050