



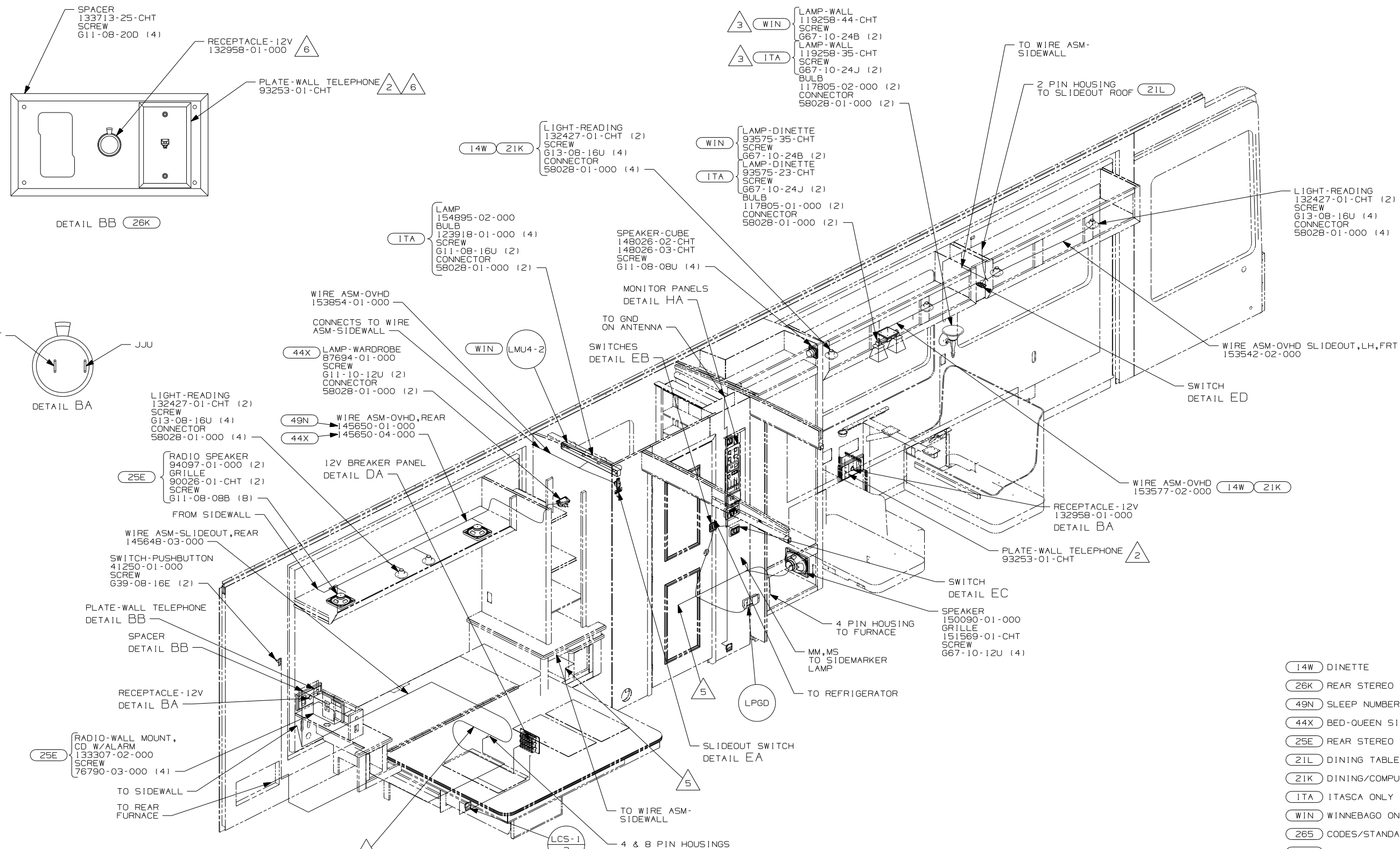
DANGER

Danger of electrical shock, burns or death. Always remove all power sources before attempting any repair, service or diagnostic work. Power can be present from shore power, generator, inverter or battery. All power sources must be disabled and secured before performing any service.



CAUTION

If you lack the skills, tools or equipment to perform diagnostic or repair work leave such work to an authorized Winnebago Industries dealer or other qualified shop.



- (14W) DINETTE
- (26K) REAR STEREO SYSTEM W/O
- (49N) SLEEP NUMBER BED-KING SIZE
- (44X) BED-QUEEN SIDEWALL
- (25E) REAR STEREO SYSTEM W/CD
- (21L) DINING TABLE/CHAIRS
- (21K) DINING/COMPUTER TABLE/CHAIRS
- (1TA) ITASCA ONLY
- (1WIN) WINNEBAGO ONLY
- (265) CODES/STANDARDS-CSA/CMVSS
- (1B1) CODES/STANDARDS USA

3 MOUNT LAMP SO THE TOP OF THE SHADE IS 150MM FROM BOTTOM OF OVHD CABINET.

2 CONNECT TELEPHONE WIRES TO MATCHING COLORS ON PLATE TELEPHONE.

1. ALL WIRES TO BE SECURED WITH CLAMP 10495 OR 10497 OR WIRE TIE 8343 OR 108046 EVERY 600MM, USE SCREW G67-XX-XXX OR G56-XX-XXX AS APPROPRIATE FOR INTALLATION.

6 THIS COMPONENT MOVES TO RADIO CABINET WITH (25E)

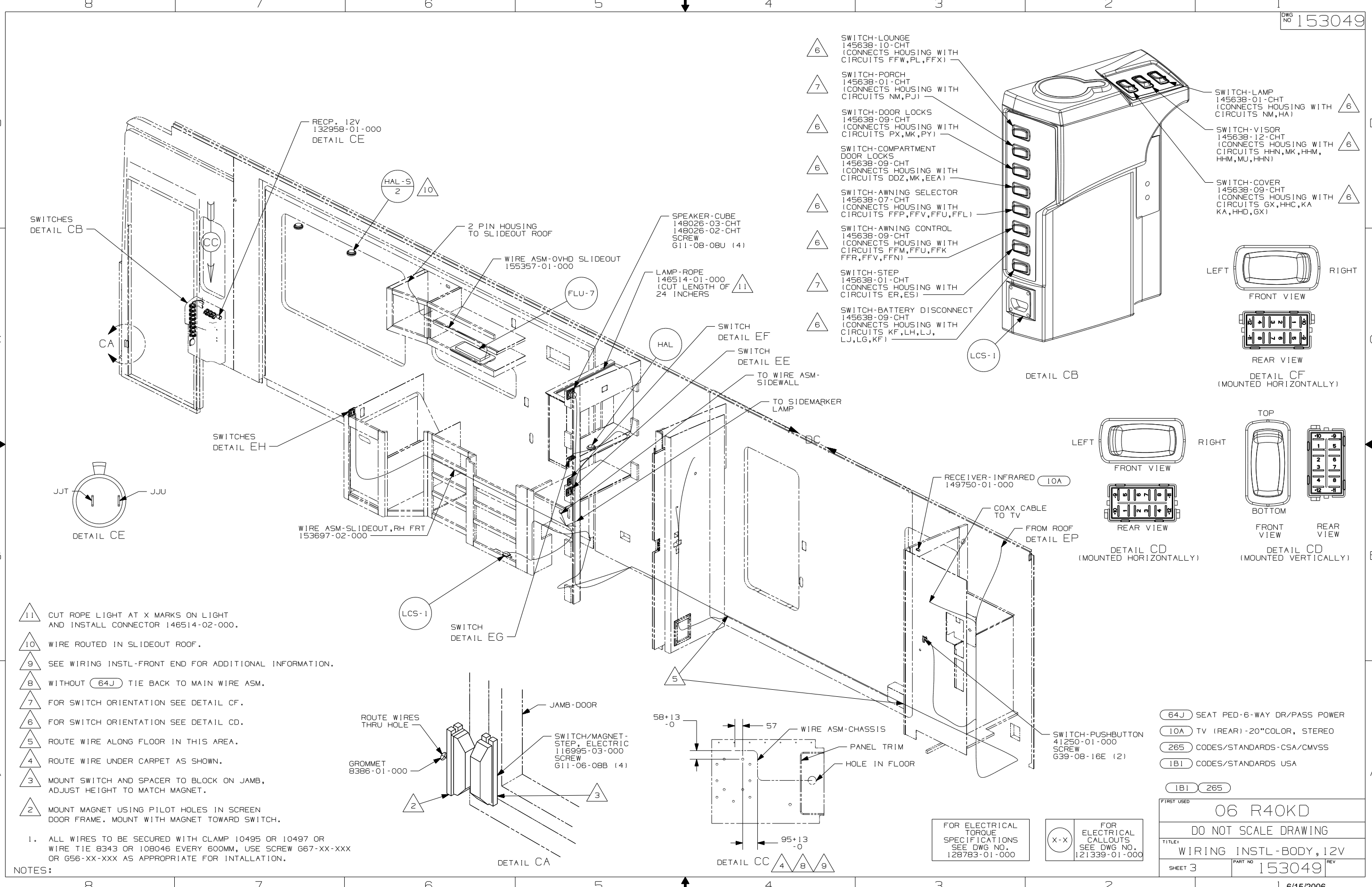
5 WIRES PASS UP THRU FLOOR IN THIS AREA.

4 SEE WIRING INSTL-BODY,110V FOR ROUTING & CLAMPING INFORMATION.

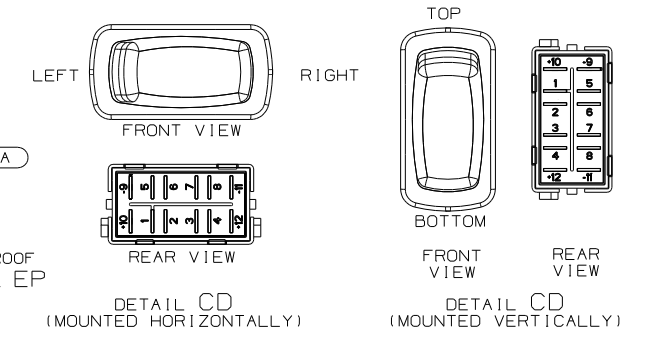
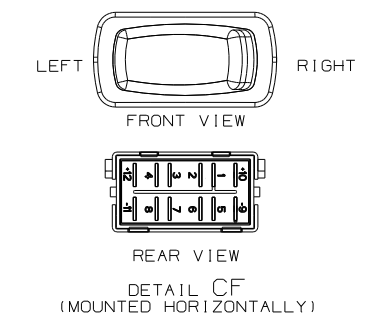
FOR ELECTRICAL TORQUE SPECIFICATIONS SEE DWG NO. 128783-01-000

(X-X) FOR ELECTRICAL CALLOUTS SEE DWG NO. 121339-01-000

FIRST USED	06 R40KD	
TITLE:	DO NOT SCALE DRAWING	
	WIRING INSTL-BODY,12V	
SHEET 2	PART NO	153049



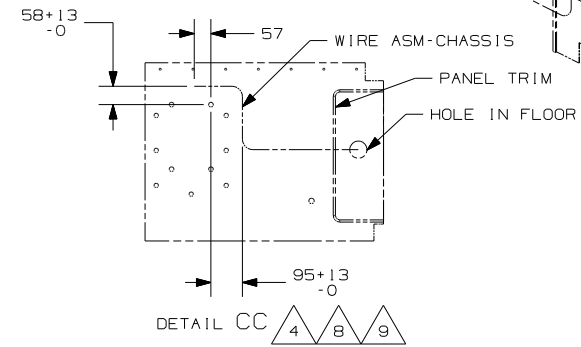
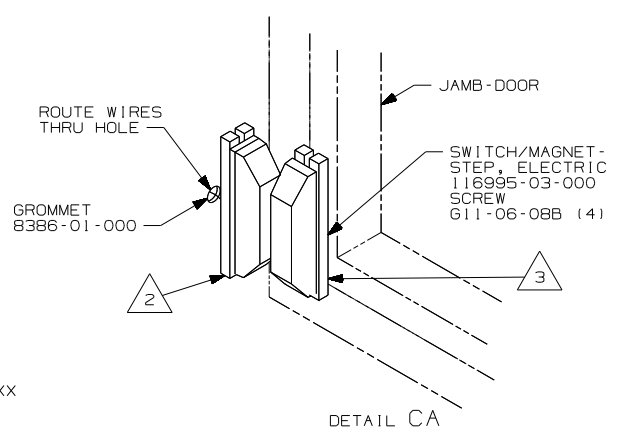
- △ 6 SWITCH-LOUNGE
145638-10-CHT
(CONNECTS HOUSING WITH
CIRCUITS FFW,PL,FFX)
- △ 7 SWITCH-PORCH
145638-01-CHT
(CONNECTS HOUSING WITH
CIRCUITS NM,PJ)
- △ 6 SWITCH-DOOR LOCKS
145638-09-CHT
(CONNECTS HOUSING WITH
CIRCUITS PX,MK,PY)
- △ 6 SWITCH-COMPARTMENT
DOOR LOCKS
145638-09-CHT
(CONNECTS HOUSING WITH
CIRCUITS DDZ,MK,EEA)
- △ 6 SWITCH-AWNING SELECTOR
145638-07-CHT
(CONNECTS HOUSING WITH
CIRCUITS FFP,FFV,FFU,FFL)
- △ 6 SWITCH-AWNING CONTROL
145638-09-CHT
(CONNECTS HOUSING WITH
CIRCUITS FFM,FFU,FFK
FFR,FFV,FFN)
- △ 7 SWITCH-STEP
145638-01-CHT
(CONNECTS HOUSING WITH
CIRCUITS ER,ES)
- △ 6 SWITCH-BATTERY DISCONNECT
145638-09-CHT
(CONNECTS HOUSING WITH
CIRCUITS KF,LH,LJ,
LJ,LG,KF)
- △ 6 SWITCH-LAMP
145638-01-CHT
(CONNECTS HOUSING WITH
CIRCUITS NM,HA)
- △ 6 SWITCH-VISOR
145638-12-CHT
(CONNECTS HOUSING WITH
CIRCUITS HHN,MK,HHM,
HHM,MU,HHN)
- △ 6 SWITCH-COVER
145638-09-CHT
(CONNECTS HOUSING WITH
CIRCUITS GX,HHC,KA
KA,HHD,6X)



- △ 11 CUT ROPE LIGHT AT X MARKS ON LIGHT AND INSTALL CONNECTOR 146514-02-000.
- △ 10 WIRE ROUTED IN SLIDEOUT ROOF.
- △ 9 SEE WIRING INSTL-FRONT END FOR ADDITIONAL INFORMATION.
- △ 8 WITHOUT (64J) TIE BACK TO MAIN WIRE ASM.
- △ 7 FOR SWITCH ORIENTATION SEE DETAIL CF.
- △ 6 FOR SWITCH ORIENTATION SEE DETAIL CD.
- △ 5 ROUTE WIRE ALONG FLOOR IN THIS AREA.
- △ 4 ROUTE WIRE UNDER CARPET AS SHOWN.
- △ 3 MOUNT SWITCH AND SPACER TO BLOCK ON JAMB, ADJUST HEIGHT TO MATCH MAGNET.
- △ 2 MOUNT MAGNET USING PILOT HOLES IN SCREEN DOOR FRAME. MOUNT WITH MAGNET TOWARD SWITCH.

1. ALL WIRES TO BE SECURED WITH CLAMP 10495 OR 10497 OR WIRE TIE 8343 OR 108046 EVERY 600MM, USE SCREW G67-XX-XXX OR G56-XX-XXX AS APPROPRIATE FOR INTALLATION.

NOTES:

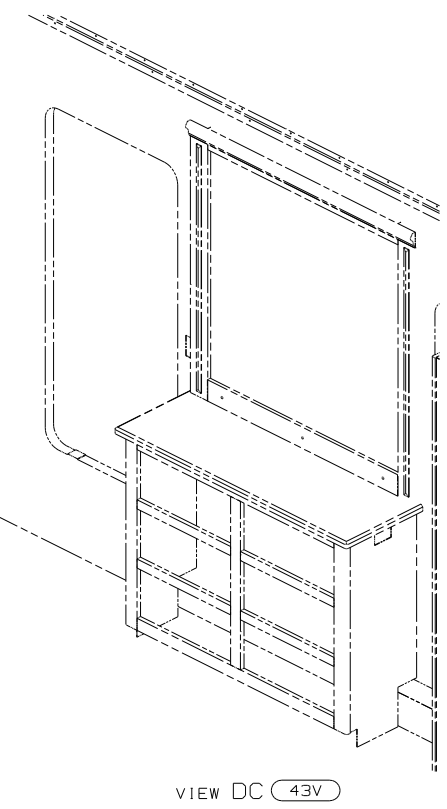
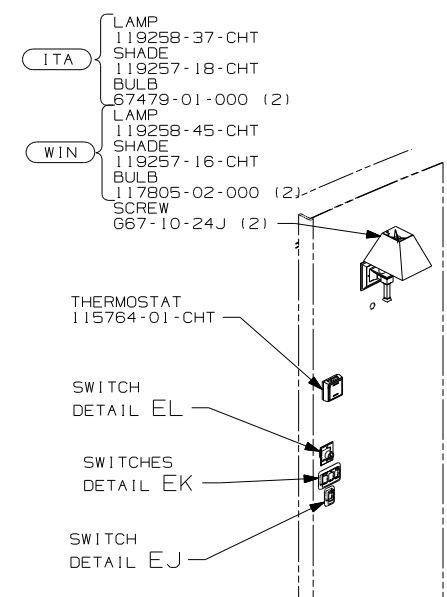
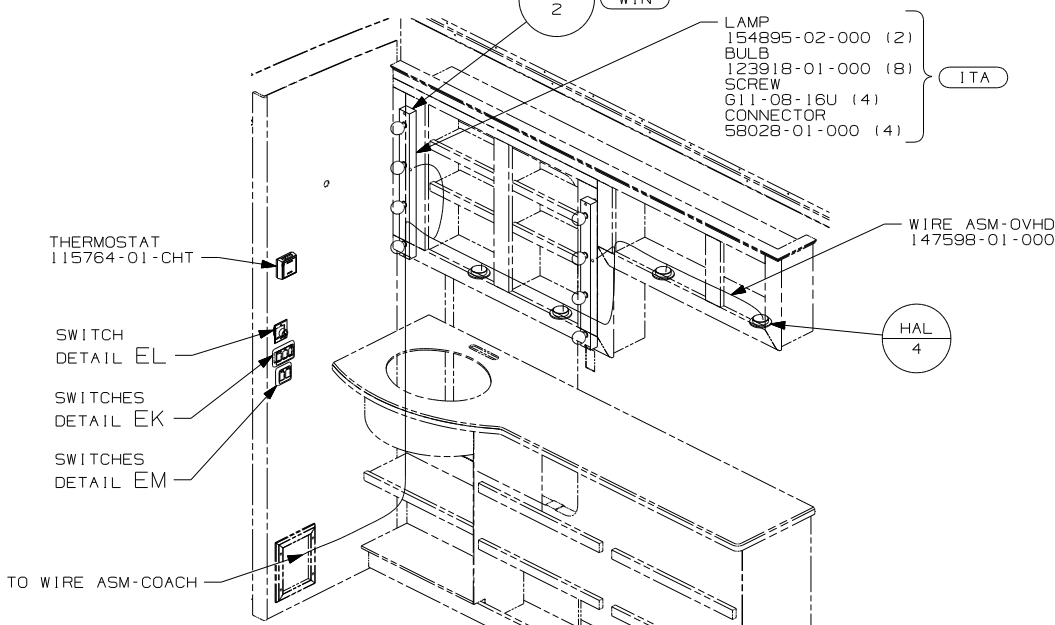
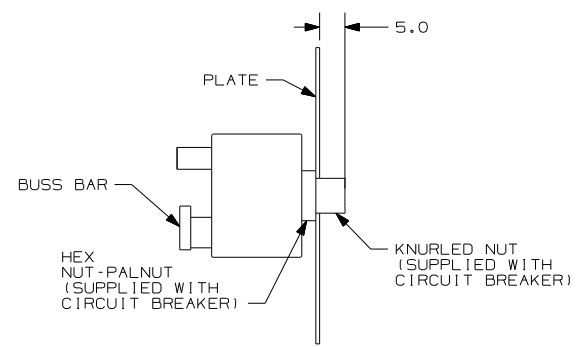
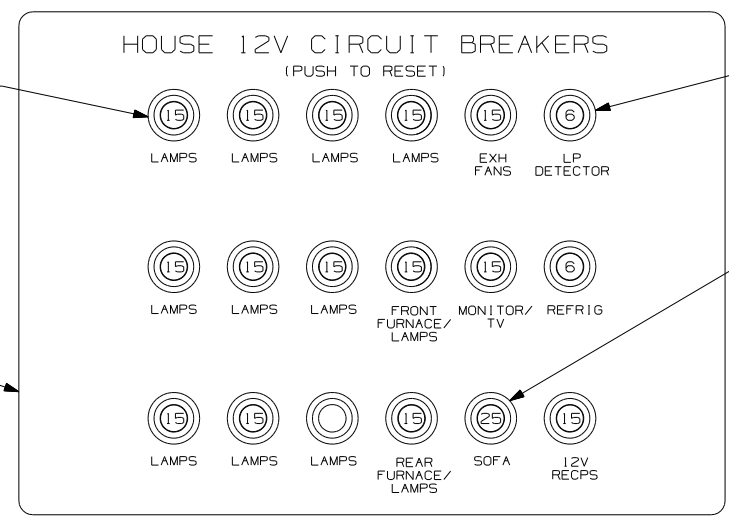
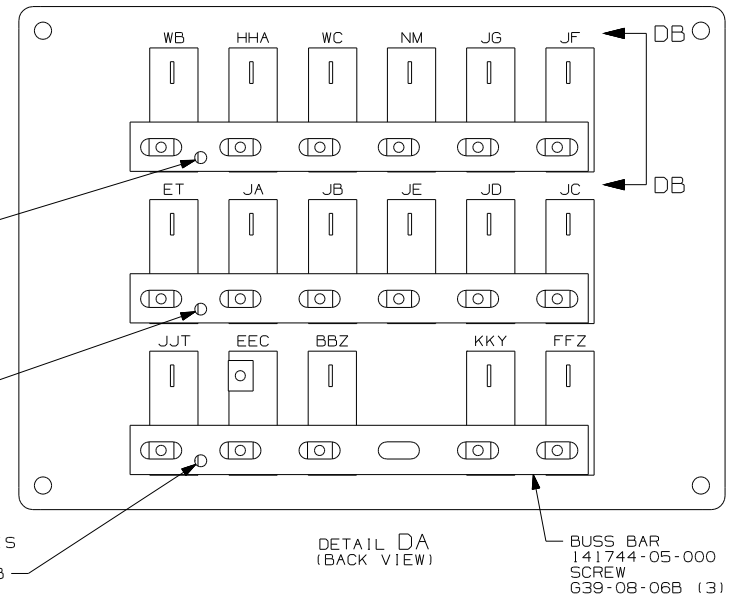


FOR ELECTRICAL TORQUE SPECIFICATIONS SEE DWG NO. 128783-01-000

(X-X) FOR ELECTRICAL CALLOUTS SEE DWG NO. 121339-01-000

- (64J) SEAT PED-6-WAY DR/PASS POWER
- (10A) TV (REAR)-20"COLOR, STEREO
- (265) CODES/STANDARDS-CSA/CMVSS
- (1B1) CODES/STANDARDS USA

FIRST USED	06 R40KD	
TITLE:	DO NOT SCALE DRAWING	
	WIRING INSTL-BODY, 12V	
SHEET 3	PART NO	153049
	REV	



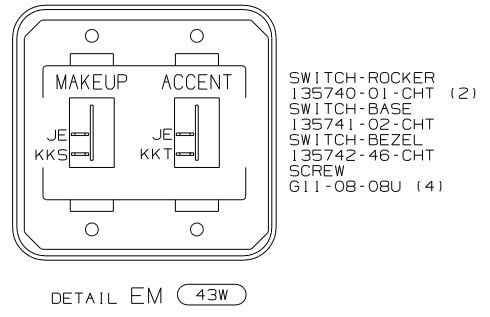
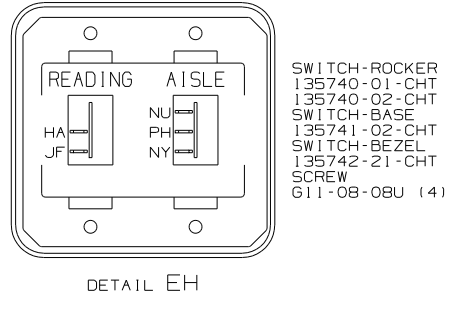
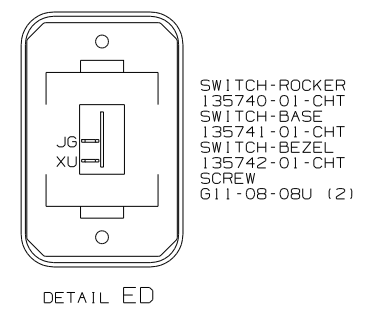
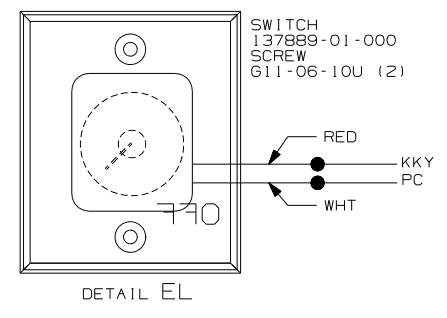
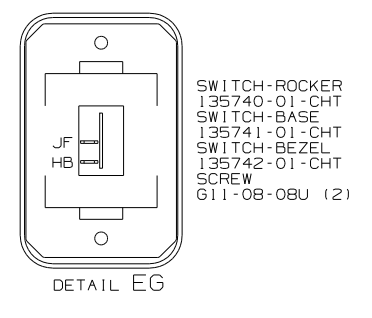
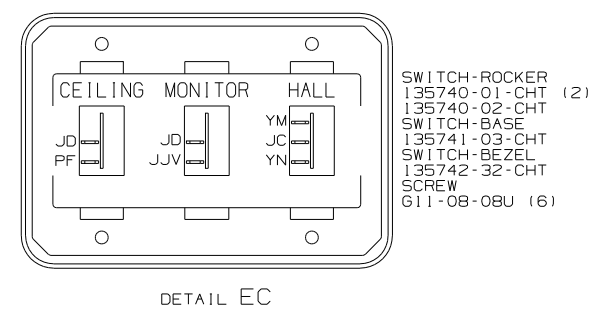
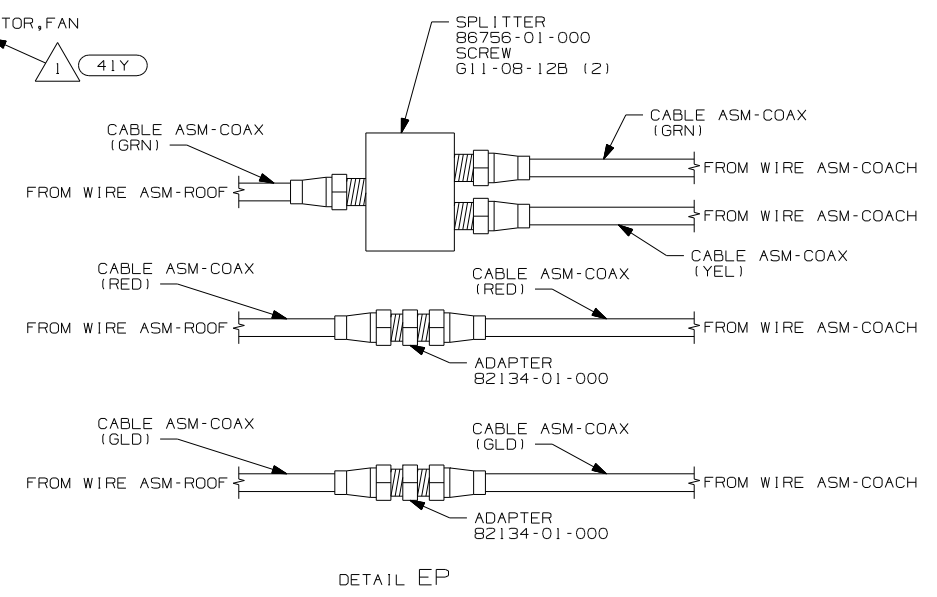
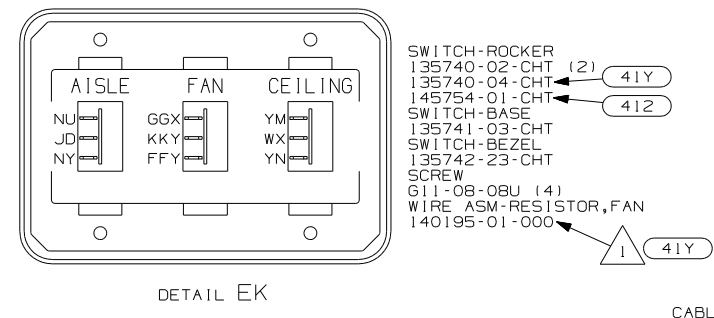
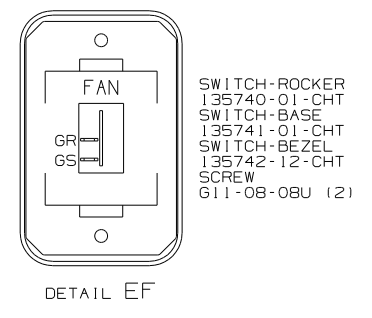
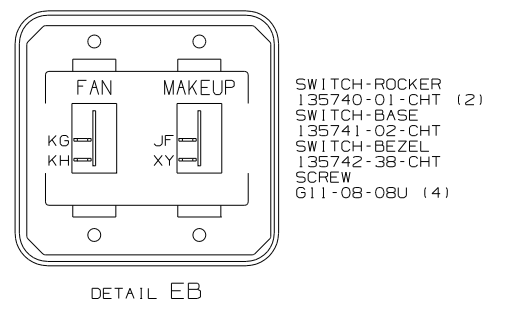
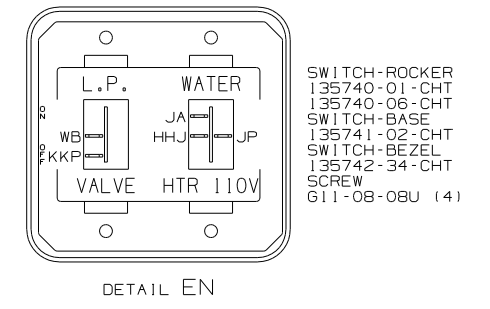
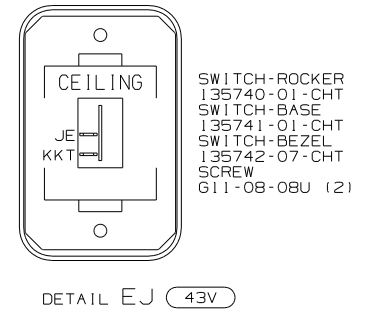
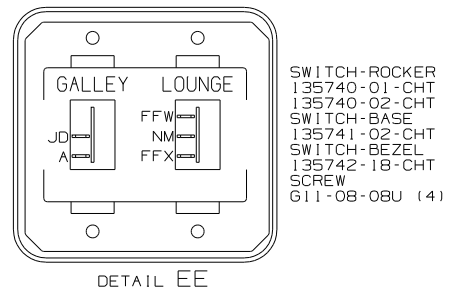
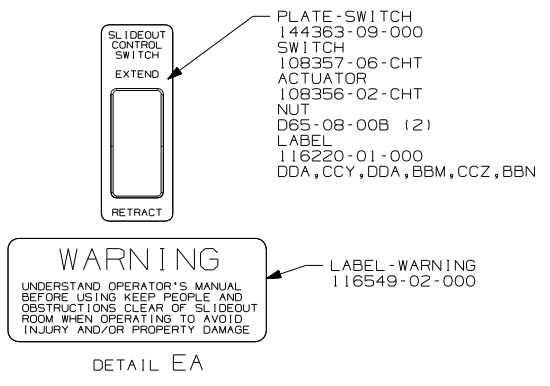
- (43W) CABINET-LAVATORY
- (43V) CABINET-CHEST OF DRAWERS
- (ITA) ITASCA ONLY
- (WIN) WINNEBAGO ONLY
- (265) CODES/STANDARDS-CSA/CMVSS
- (1B1) CODES/STANDARDS USA

FIRST USED	06 R40KD	
TITLE:	DO NOT SCALE DRAWING	
	WIRING INSTL-BODY, 12V	
SHEET 4	PART NO	REV
	153049	

FOR ELECTRICAL TORQUE SPECIFICATIONS SEE DWG NO. 128783-01-000

(X-X) FOR ELECTRICAL CALLOUTS SEE DWG NO. 121339-01-000

NOTES:
 1. ALL WIRES TO BE SECURED WITH CLAMP 10495 OR 10497 OR WIRE TIE 8343 OR 108046 EVERY 600MM, USE SCREW G67-XX-XXX OR G56-XX-XXX AS APPROPRIATE FOR INTALLATION.



- 43W CABINET-LAVATORY
- 43V CABINET-CHEST OF DRAWERS
- 41Y FAN - CEILING_BEDROOM
- 41Z DECORATIVE LIGHT - CEILING
- 265 CODES/STANDARDS-CSA/CMVSS
- 1B1 CODES/STANDARDS USA

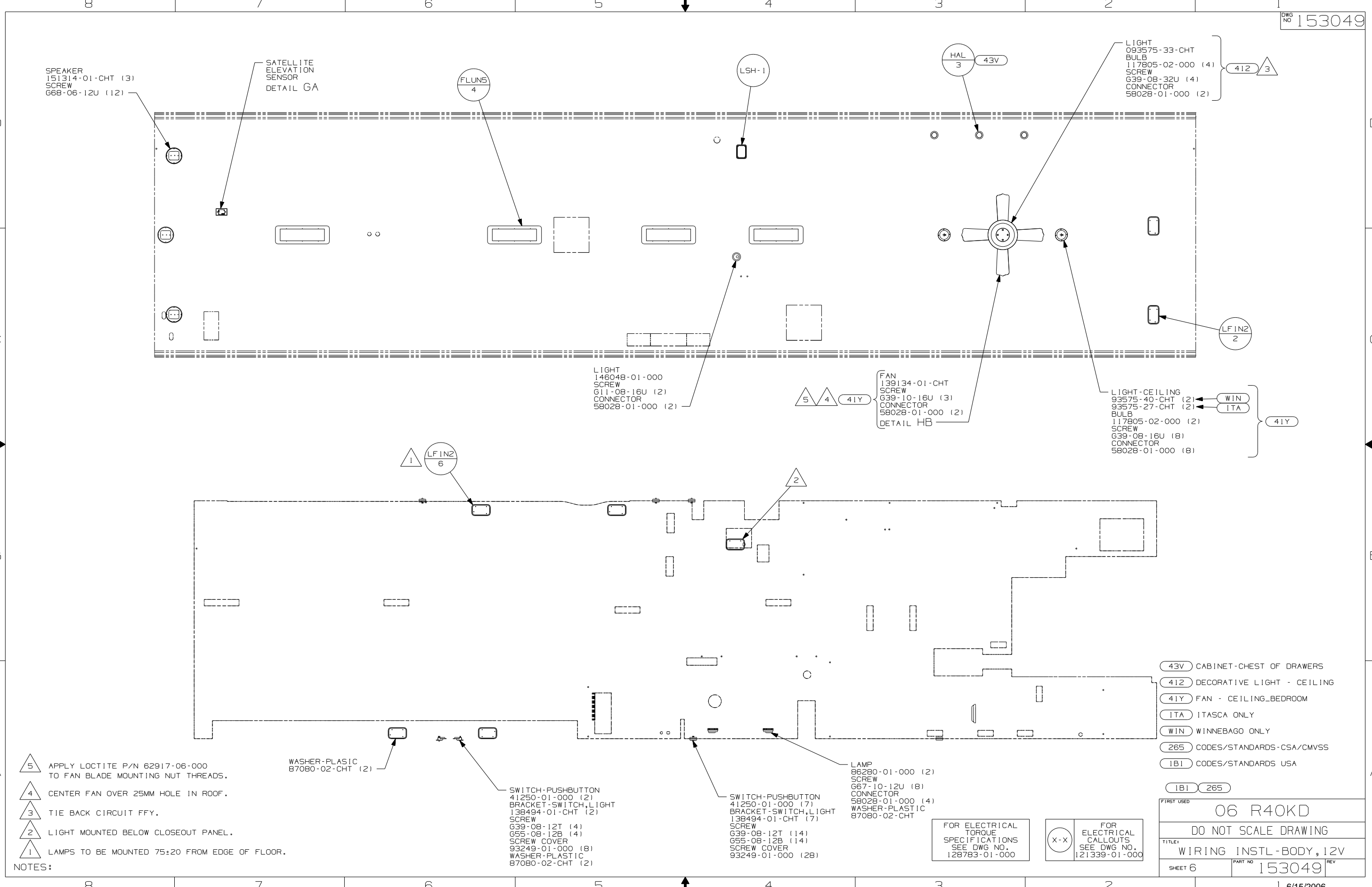
NOTES:

1 CONNECT WIRE ASM-RESISTOR,FAN TO 2-PIN HOUSING LOCATED BY THE SWITCH WIRES.

FOR ELECTRICAL TORQUE SPECIFICATIONS SEE DWG NO. 128783-01-000

FOR ELECTRICAL CALLOUTS SEE DWG NO. 121339-01-000

FIRST USED	06 R40KD	
TITLE:	DO NOT SCALE DRAWING	
	WIRING INSTL-BODY, 12V	
SHEET 5	PART NO	153049
	REV	



SPEAKER
151314-01-CHT (3)
SCREW
668-06-12U (12)

SATELLITE
ELEVATION
SENSOR
DETAIL GA

FLUNS
4

LSH-1

HAL
3
43V

LIGHT
093575-33-CHT
BULB
117805-02-000 (4)
SCREW
639-08-32U (4)
CONNECTOR
58028-01-000 (2)

412 3

LF IN2
2

LIGHT
146048-01-000
SCREW
611-08-16U (2)
CONNECTOR
58028-01-000 (2)

5 4 41Y

FAN
139134-01-CHT
SCREW
639-10-16U (3)
CONNECTOR
58028-01-000 (2)
DETAIL HB

LIGHT-CEILING
93575-40-CHT (2)
93575-27-CHT (2)
BULB
117805-02-000 (2)
SCREW
639-08-16U (8)
CONNECTOR
58028-01-000 (8)

WIN
ITA

41Y

1 LF IN2
6

2

WASHER-PLASTIC
87080-02-CHT (2)

SWITCH-PUSHBUTTON
41250-01-000 (2)
BRACKET-SWITCH,LIGHT
138494-01-CHT (2)
SCREW
639-08-12T (4)
G55-08-12B (4)
SCREW COVER
93249-01-000 (8)
WASHER-PLASTIC
87080-02-CHT (2)

SWITCH-PUSHBUTTON
41250-01-000 (7)
BRACKET-SWITCH,LIGHT
138494-01-CHT (7)
SCREW
639-08-12T (14)
G55-08-12B (14)
SCREW COVER
93249-01-000 (28)

LAMP
86280-01-000 (2)
SCREW
667-10-12U (8)
CONNECTOR
58028-01-000 (4)
WASHER-PLASTIC
87080-02-CHT

- 43V CABINET-CHEST OF DRAWERS
- 412 DECORATIVE LIGHT - CEILING
- 41Y FAN - CEILING_BEDROOM
- ITA ITASCA ONLY
- WIN WINNEBAGO ONLY
- 265 CODES/STANDARDS-CSA/CMVSS
- 1B1 CODES/STANDARDS USA

1B1 265

- 5 APPLY LOCTITE P/N 62917-06-000 TO FAN BLADE MOUNTING NUT THREADS.
- 4 CENTER FAN OVER 25MM HOLE IN ROOF.
- 3 TIE BACK CIRCUIT FFY.
- 2 LIGHT MOUNTED BELOW CLOSEOUT PANEL.
- 1 LAMPS TO BE MOUNTED 75±20 FROM EDGE OF FLOOR.

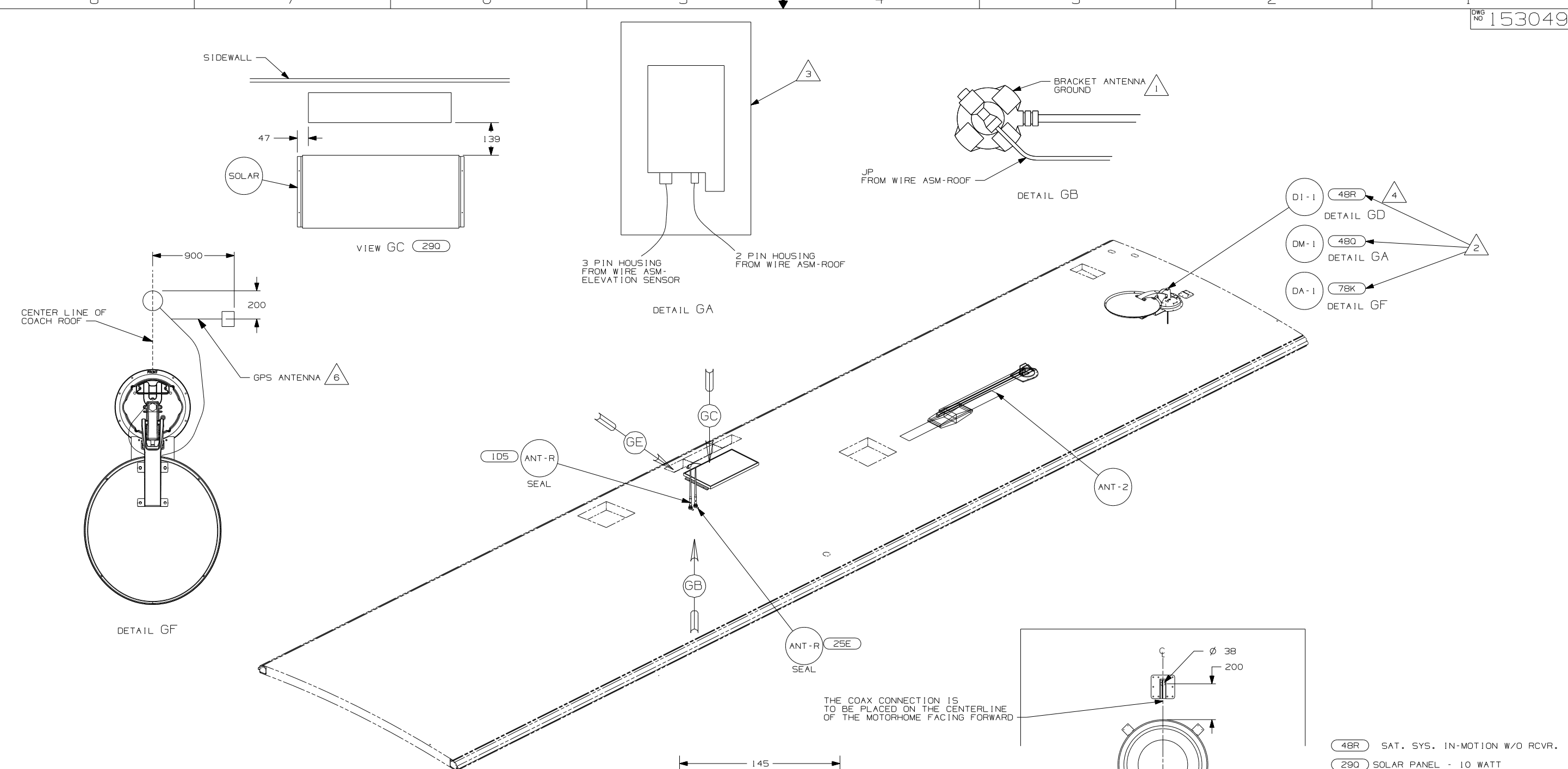
NOTES:

FOR ELECTRICAL
TORQUE
SPECIFICATIONS
SEE DWG NO.
128783-01-000

X-X

FOR ELECTRICAL
CALLOUTS
SEE DWG NO.
121339-01-000

FIRST USED	06 R40KD	
TITLE:	DO NOT SCALE DRAWING	
	WIRING INSTL-BODY, 12V	
SHEET 6	PART NO	153049
	REV	



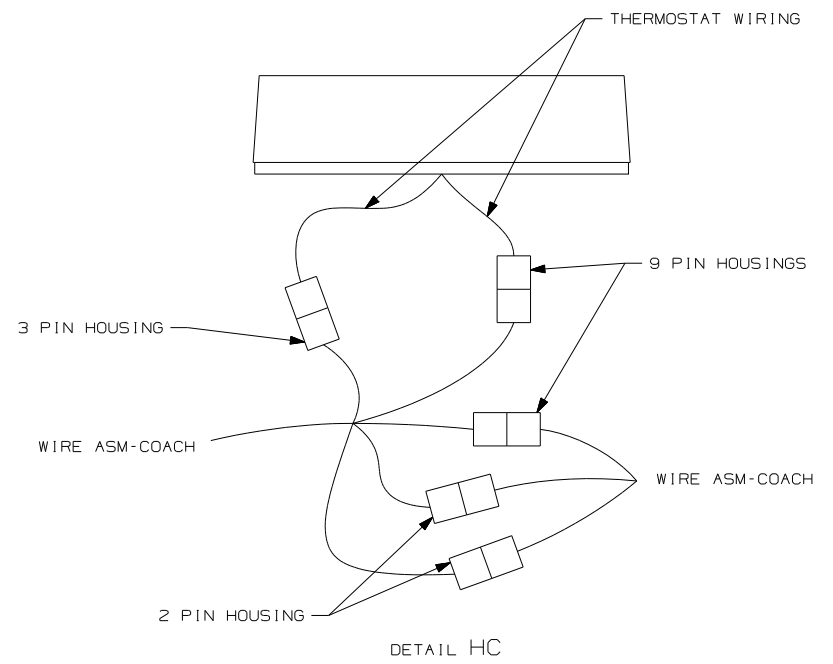
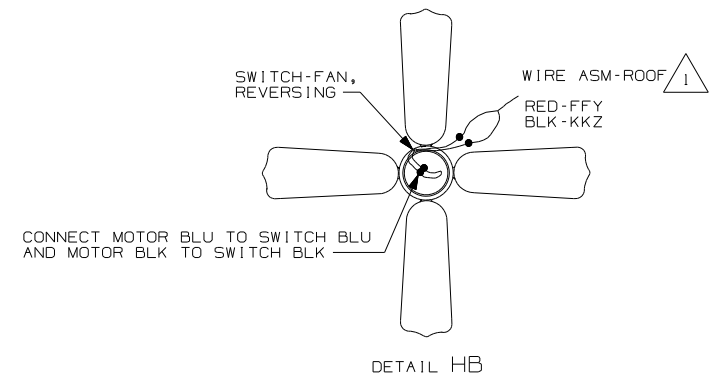
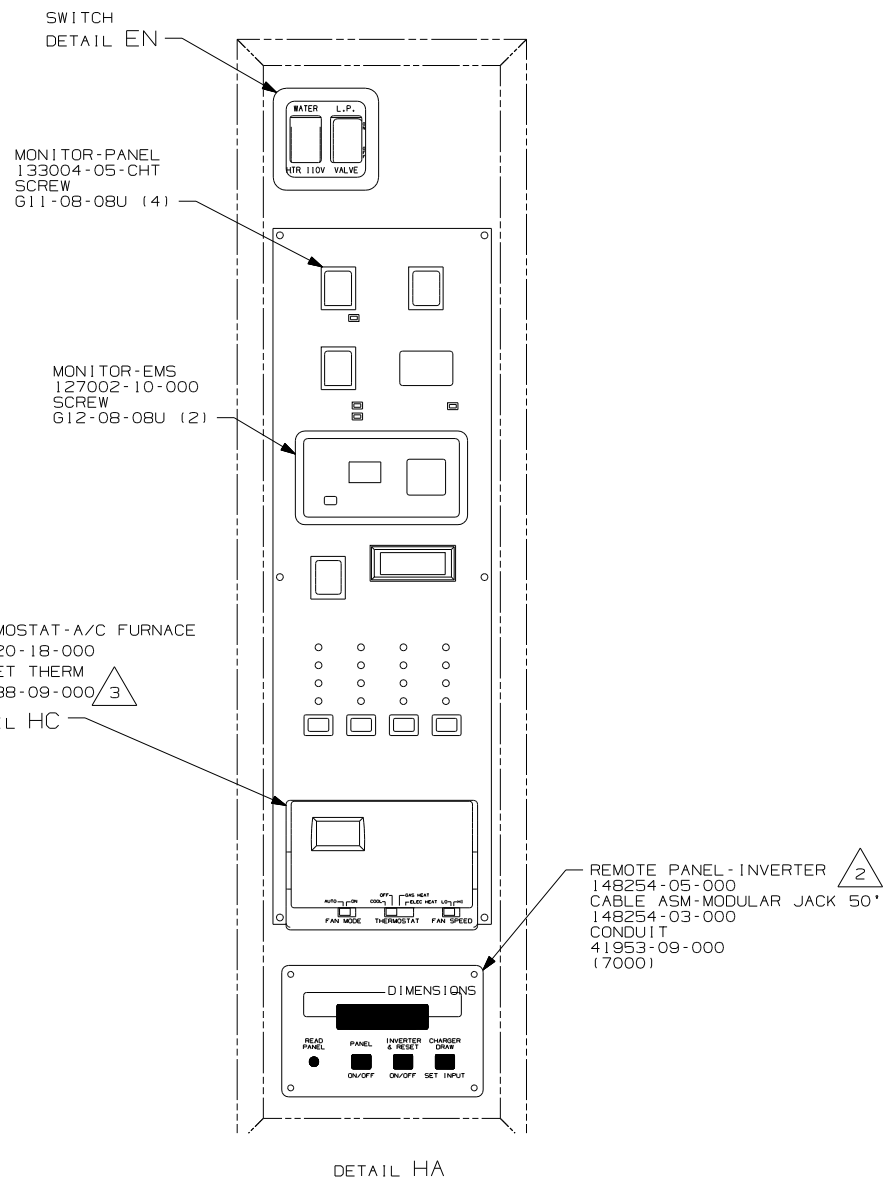
- NOTES:
- 6 MOUNT GPS ANTENNA TO THE RIGHT OF THE SATELLITE AS SHOWN. SECURE CABLE WITH ROOF SEALANT.
 - 5 REMOVE ALL SHIPPING RESTRAINTS AND FIRMLY INSERT THE SUPPLIED PLUGS INTO THE APPROPRIATE SIZED HOLES AS SPECIFIED IN THE INSTALLATION PROCESS.
 - 4 SEE DETAIL GD FOR SATELLITE LOCATION.
 - 3 SENSOR SUPPLIED WITH SATELLITE ASSEMBLY.
 - 2 SEE MANUFACTURER'S INSTALLATION FOR ADDITIONAL INFORMATION.
 - 1 WRAP BRACKET LEGS AROUND ANTENNA BASE.

- 48R SAT. SYS. IN-MOTION W/O RCVR.
- 290 SOLAR PANEL - 10 WATT
- 25E REAR STEREO SYSTEM W/CD
- ID5 ENTERTAINMENT CTR/EXT W/CD
- 78K SATELLITE DISH-AUTOMATIC
- 480 SATELLITE DISH & ELEV.SENSOR
- 265 CODES/STANDARDS-CSA/CMVSS
- 1B1 CODES/STANDARDS USA

FOR ELECTRICAL TORQUE SPECIFICATIONS SEE DWG NO. 128783-01-000

FOR ELECTRICAL CALLOUTS SEE DWG NO. 121339-01-000

FIRST USED	06 R40KD	
TITLE:	DO NOT SCALE DRAWING	
	WIRING INSTL - BODY, 12V	
SHEET 7	PART NO	153049
	REV	



- ³ INSTALL GASKET ON BACK SIDE OF ONE PLACE AFTER INSTALLATION OF THERMOSTAT, MAKING SURE THAT THE GASKET COVERS AND SEALS THE HOLE THAT THE WIRE PASS THROUGH
- ² CONNECT CIRCUIT WB FROM COACH WIRING TO RED WIRE ON REMOTE PANEL.
- ¹ TIE BACK CIRCUIT JC.
- NOTES:

FOR ELECTRICAL TORQUE SPECIFICATIONS SEE DWG NO. 128783-01-000

FOR ELECTRICAL CALLOUTS SEE DWG NO. 121339-01-000

- (265) CODES/STANDARDS-CSA/CMVSS
- (1B1) CODES/STANDARDS USA
- (1B1) (265)

FIRST USED	
06 R40KD	
DO NOT SCALE DRAWING	
TITLE: WIRING INSTL-BODY, 12V	
SHEET 8	PART NO 153049