



DANGER

Danger of electrical shock, burns or death. Always remove all power sources before attempting any repair, service or diagnostic work. Power can be present from shore power, generator, inverter or battery. All power sources must be disabled and secured before performing any service.

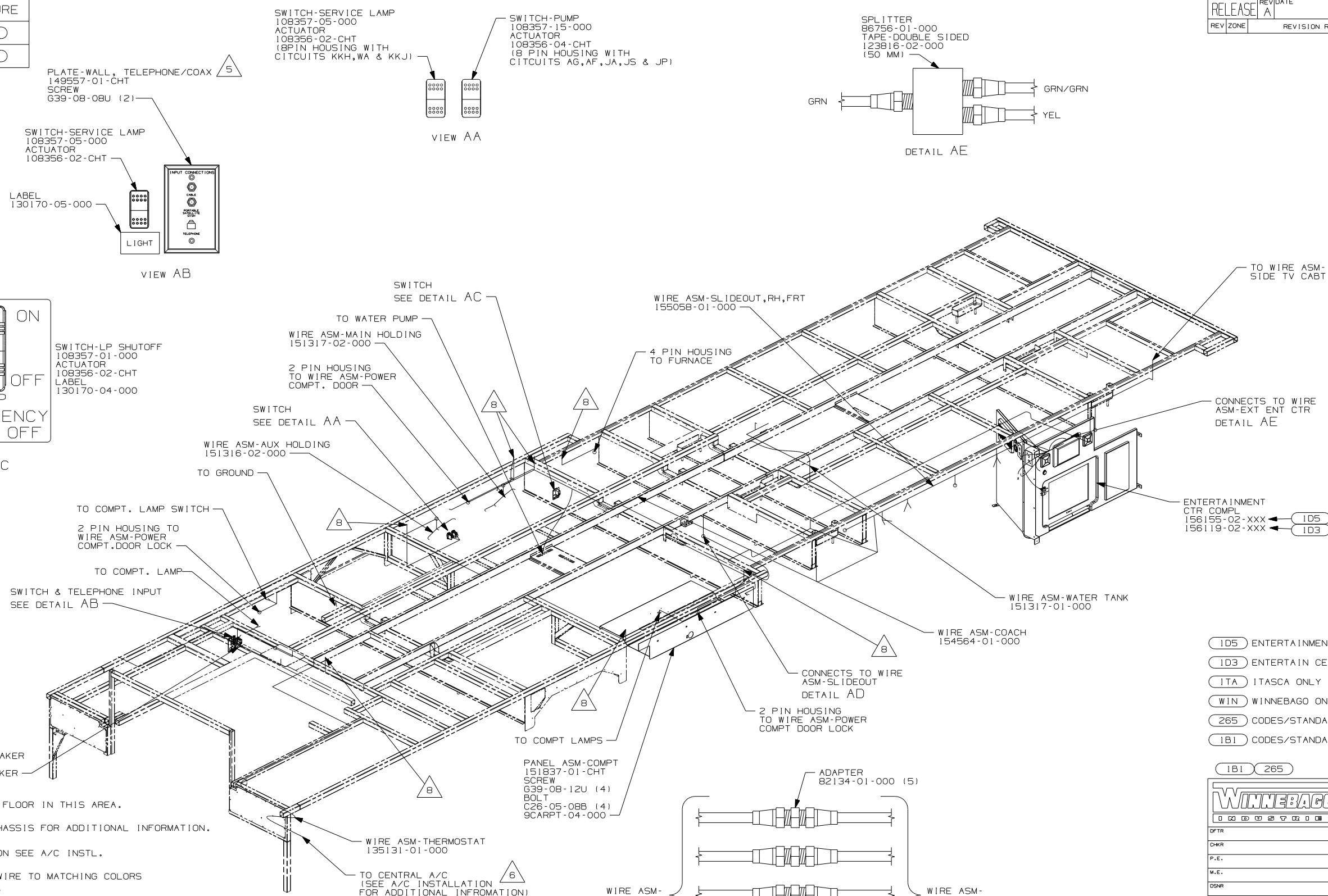


CAUTION

If you lack the skills, tools or equipment to perform diagnostic or repair work leave such work to an authorized Winnebago Industries dealer or other qualified shop.

DRAWING NO.	FEATURE
154559-01	(WIN)
154559-02	(ITA)

RELEASE	REV/DATE	DWG NO
	A	154559
REV ZONE	REVISION RECORD	DATE DFR-0R16



- (ID5) ENTERTAINMENT CENTR/EXT W/CD
- (ID3) ENTERTAINMENT CENTR/EXT TV-DVD
- (ITA) ITASCA ONLY
- (WIN) WINNEBAGO ONLY
- (265) CODES/STANDARDS-CSA/CMVSS
- (1B1) CODES/STANDARDS USA

WINNEBAGO INDUSTRIES, INC. COPYRIGHT 2006

ALL DIMENSIONS ARE IN MILLIMETERS

06 R40FD

DO NOT SCALE DRAWING

TITLE: WIRING INSTL-BODY,12V

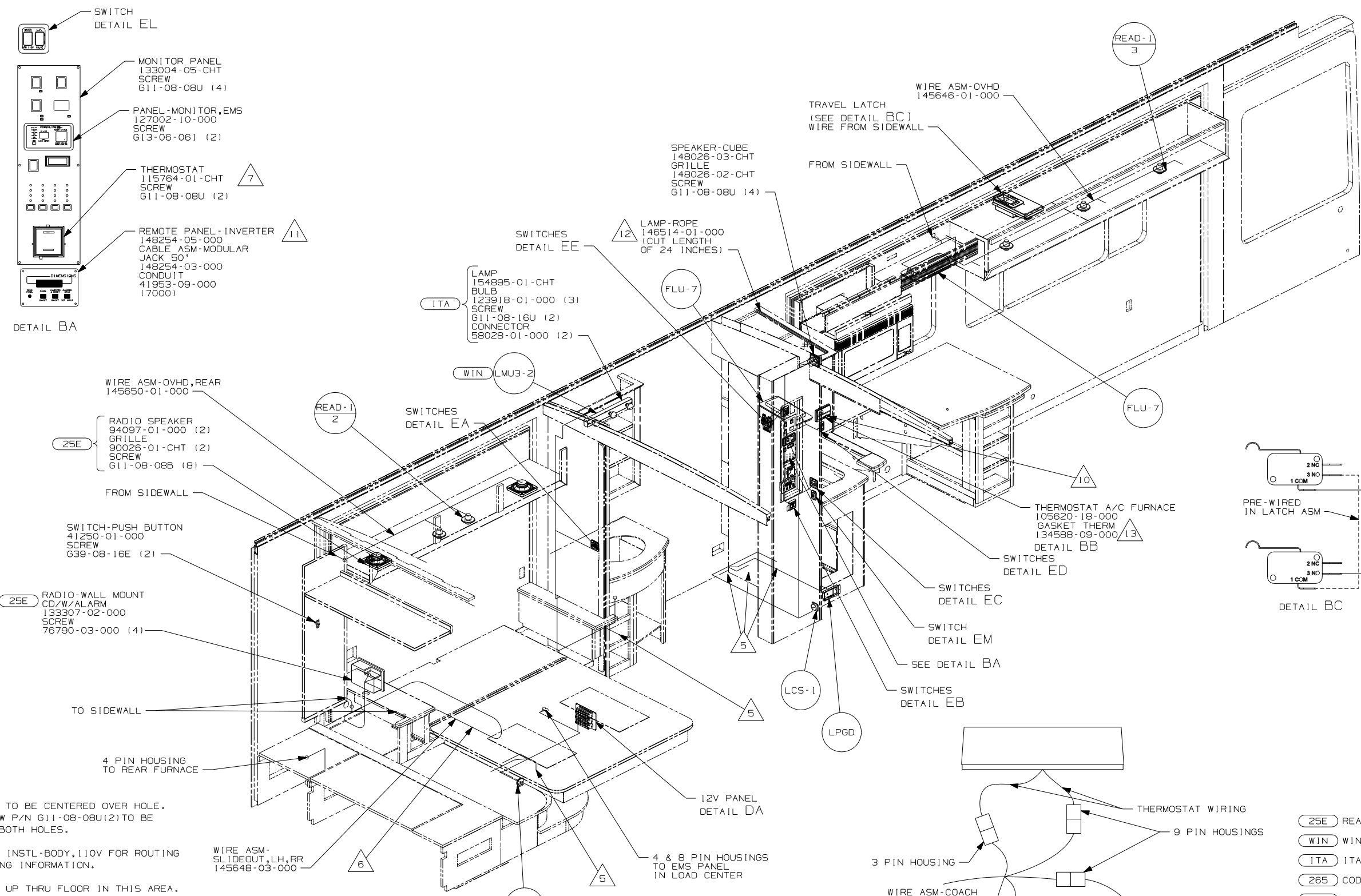
SHEET 1 OF 7 PART NO 154559 REV

REF: 1 6/15/2006

- NOTES:
- ALL WIRES TO BE SECURED WITH CLAMP 10495 OR 10497 OR WIRE TIE 8343 OR 108046 EVERY 600MM, USE SCREW G67-XX-XXX OR G56-XX-XXX AS APPROPRIATE FOR INSTALLATION.
 - ALL 110V WIRE TO BE CLAMPED WITH CLAMP 10497-05-000 WITHIN 200 OF OUTLET BOXES, USE SCREW G67-10-12B.
 - ALL GROUND WIRE TO BE COVERED WITH TUBING 8041-02-000.
 - FOR MORE INFORMATION SEE WIRING DIAGRAM-BODY,110V.
 - CONNECT TELEPHONE WIRE TO MATCHING COLORS ON PLATE-TELEPHONE.
 - FOR MORE INFORMATION SEE A/C INSTL.
 - SEE WIRING INSTL-CHASSIS FOR ADDITIONAL INFORMATION.
 - WIRES PASS UP THRU FLOOR IN THIS AREA.

FOR ELECTRICAL TORQUE SPECIFICATIONS SEE DWG NO. 128783-01-000

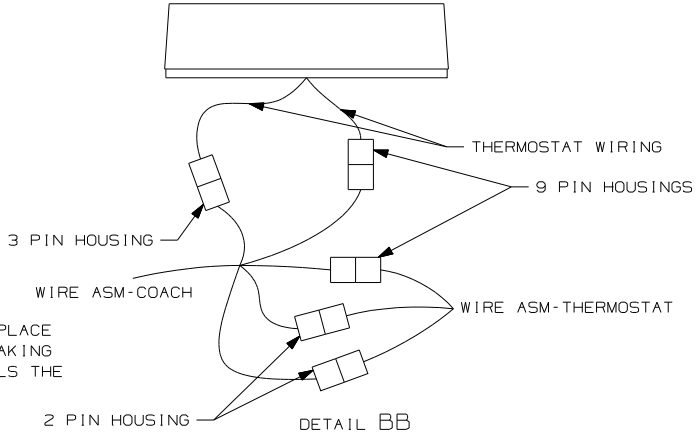
(X-X) FOR ELECTRICAL CALLOUTS SEE DWG NO. 121339-01-000



- 7 THERMOSTAT TO BE CENTERED OVER HOLE. BLACK SCREW P/N G11-08-08U(2) TO BE PLACED IN BOTH HOLES.
- 6 SEE WIRING INSTL-BODY,110V FOR ROUTING AND CLAMPING INFORMATION.
- 5 WIRES PASS UP THRU FLOOR IN THIS AREA.
4. SEE WIRING DIAGRAM-BODY FOR ADDITIONAL INFORMATION.
3. ALL GROUND WIRE TO BE COVERED WITH TUBING 8041-02-000.
2. ALL 110V WIRE TO BE CLAMPED WITH CLAMP 10497-05-000 WITHIN 200 OF OUTLET BOXES, USE SCREW G67-10-12B.
1. ALL WIRES TO BE SECURED WITH CLAMP 10495 OR 10497 OR WIRE TIE 8343 OR 108046 EVERY 600MM, USE SCREW G67-XX-XXX OR G56-XX-XXX AS APPROPRIATE FOR INSTALLATION.

- 10 PLACE CONNECTOR HERE TO MAKE CONNECTION TO MATING WIRE ASM.
- 9 CUT ROPE LIGHT AT X MARKS ON LIGHT AND INSTALL CONNECTOR 146514-02-000.
- 8 MOUNT BOX AND COIL BEHIND REAR STEREO TO SLIDEOUT WALL.

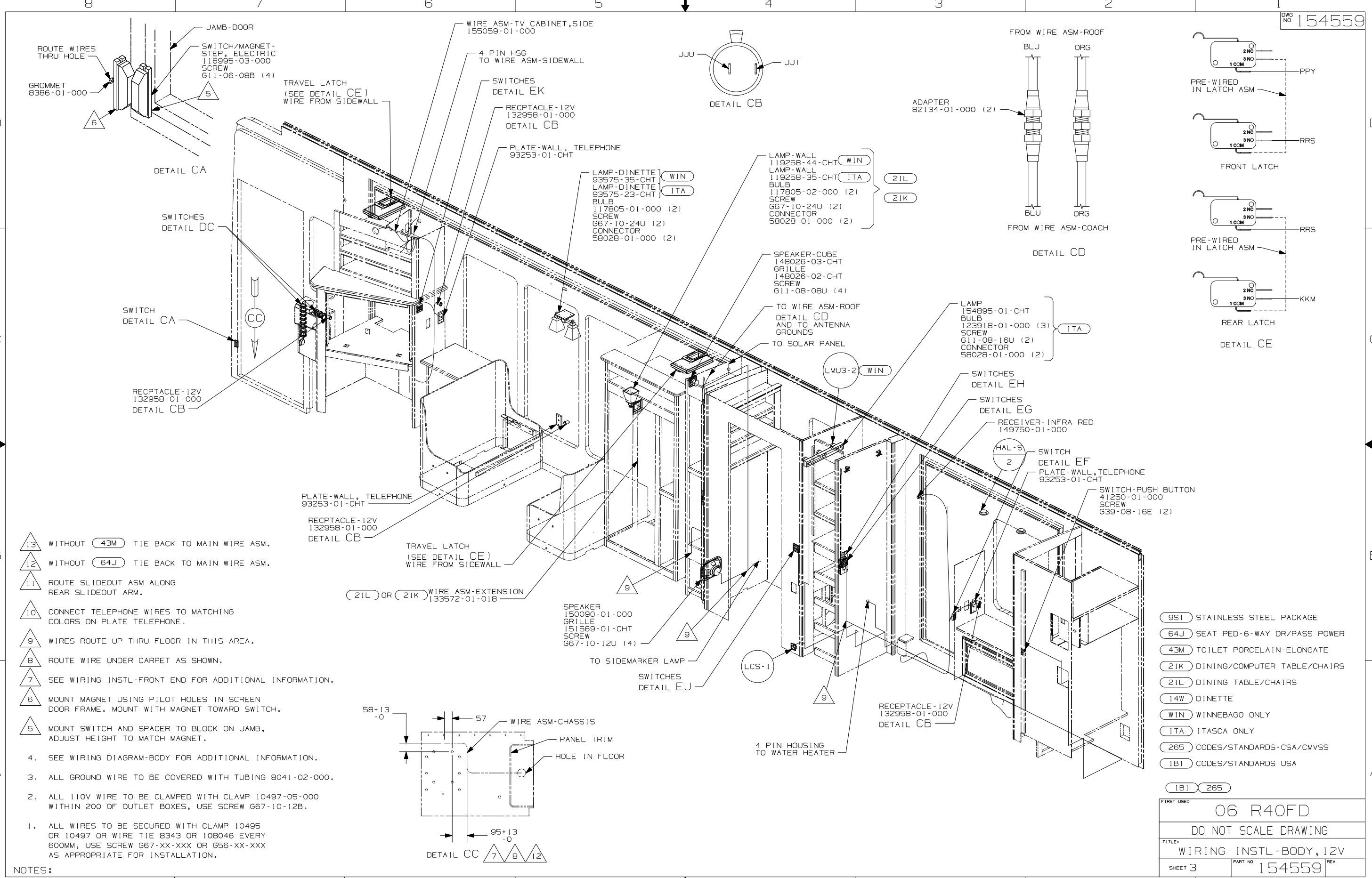
- 13 INSTALL GASKET ON BACK SIDE OF ONE PLACE AFTER INSTALLATION OF THERMOSTAT, MAKING SURE THAT THE GASKET COVERS AND SEALS THE HOLE THAT THE WIRES PASS THROUGH
- 12 CUT ROPE LIGHT AT X MARKS ON LIGHT AND INSTALL CONNECTOR 146514-02-000.
- 11 CONNECT CIRCUIT WB FROM COACH WIRING TO RED WIRE ON REMOTE PANEL.



NOTES:

- 25E REAR STEREO SYSTEM W/CD
- WIN WINNEBAGO ONLY
- ITA ITASCA ONLY
- 265 CODES/STANDARDS-CSA/CMVSS
- 1B1 CODES/STANDARDS USA

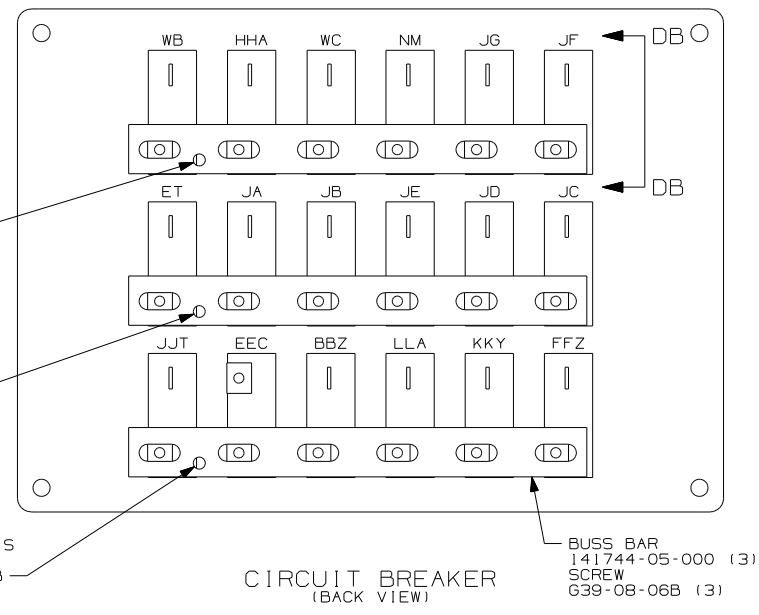
FIRST USED	06 R40FD
DO NOT SCALE DRAWING	
TITLE: WIRING INSTL-BODY,12V	
SHEET 2	PART NO 154559 REV



- △13 WITHOUT (43M) TIE BACK TO MAIN WIRE ASM.
 - △12 WITHOUT (64J) TIE BACK TO MAIN WIRE ASM.
 - △11 ROUTE SLIDEOUT ASM ALONG REAR SLIDEOUT ARM.
 - △10 CONNECT TELEPHONE WIRES TO MATCHING COLORS ON PLATE TELEPHONE.
 - △9 WIRES ROUTE UP THRU FLOOR IN THIS AREA.
 - △8 ROUTE WIRE UNDER CARPET AS SHOWN.
 - △7 SEE WIRING INSTL-FRONT END FOR ADDITIONAL INFORMATION.
 - △6 MOUNT MAGNET USING PILOT HOLES IN SCREEN DOOR FRAME. MOUNT WITH MAGNET TOWARD SWITCH.
 - △5 MOUNT SWITCH AND SPACER TO BLOCK ON JAMB, ADJUST HEIGHT TO MATCH MAGNET.
4. SEE WIRING DIAGRAM-BODY FOR ADDITIONAL INFORMATION.
 3. ALL GROUND WIRE TO BE COVERED WITH TUBING 8041-02-000.
 2. ALL 110V WIRE TO BE CLAMPED WITH CLAMP 10497-05-000 WITHIN 200 OF OUTLET BOXES, USE SCREW 667-10-12B.
 1. ALL WIRES TO BE SECURED WITH CLAMP 10495 OR 10497 OR WIRE TIE 8343 OR 108046 EVERY 600MM, USE SCREW 667-XX-XXX OR 656-XX-XXX AS APPROPRIATE FOR INSTALLATION.

- (951) STAINLESS STEEL PACKAGE
- (64J) SEAT PED-6-WAY DR/PASS POWER
- (43M) TOILET PORCELAIN-ELONGATE
- (21K) DINING/COMPUTER TABLE/CHAIRS
- (21L) DINING TABLE/CHAIRS
- (14W) DINETTE
- (WIN) WINNEBAGO ONLY
- (ITA) ITASCA ONLY
- (265) CODES/STANDARDS-CSA/CMVSS
- (1B1) CODES/STANDARDS USA

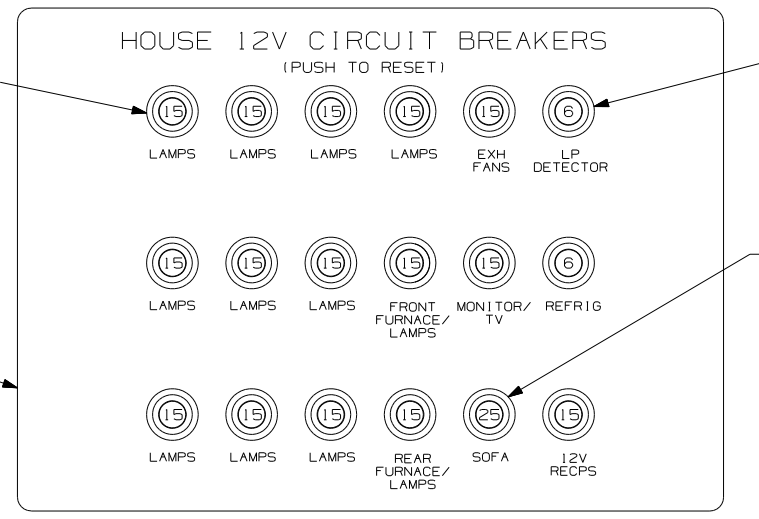
FIRST USED	
06 R40FD	
DO NOT SCALE DRAWING	
TITLE: WIRING INSTL-BODY, 12V	
SHEET 3	PART NO 154559 REV



J
 6 BLK
 FROM WIRE
 ASM-CHASSIS
 SCREW
 G39-08-06B

K
 6 BLK
 FROM WIRE
 ASM-CHASSIS
 SCREW
 G39-08-06B

Z
 6 BLK
 FROM WIRE
 ASM-CHASSIS
 SCREW
 G39-08-06B



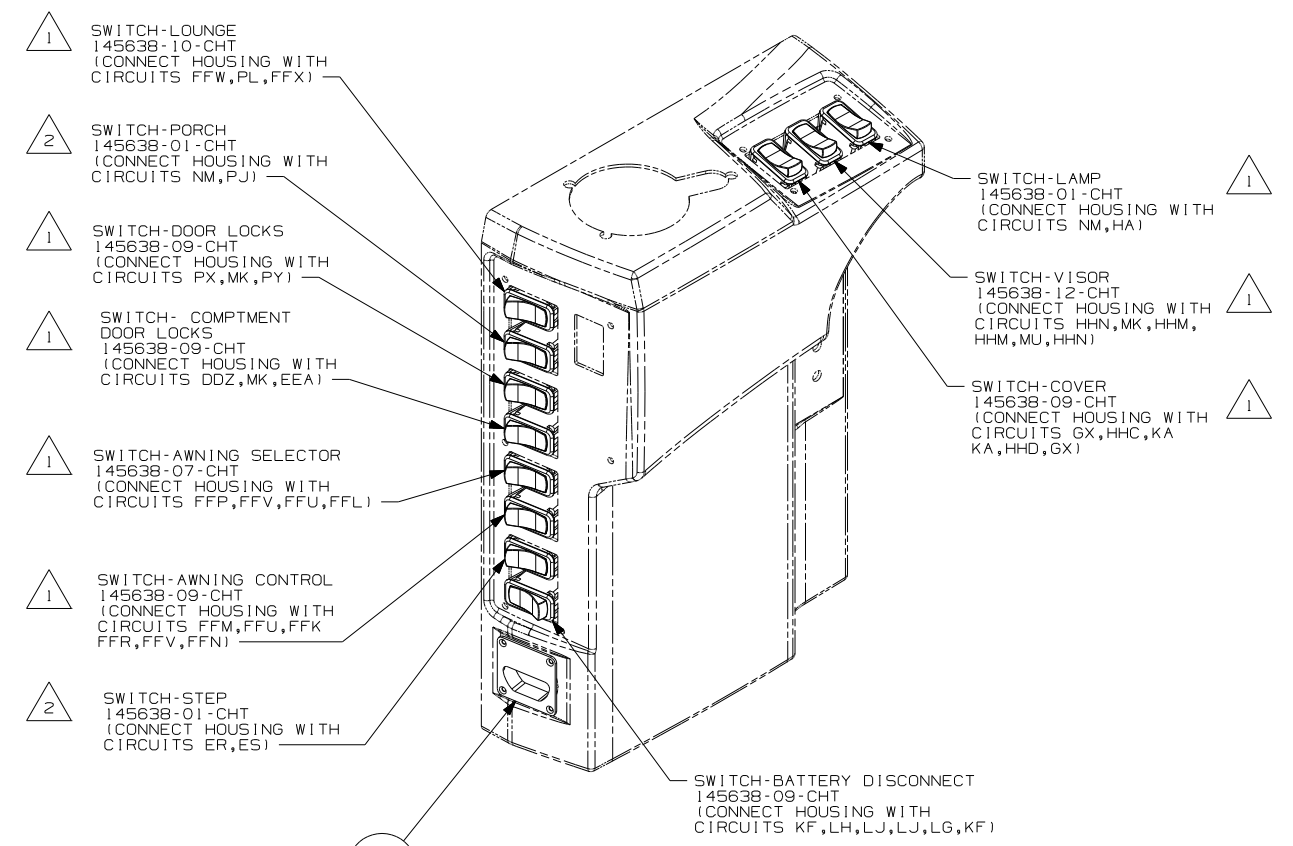
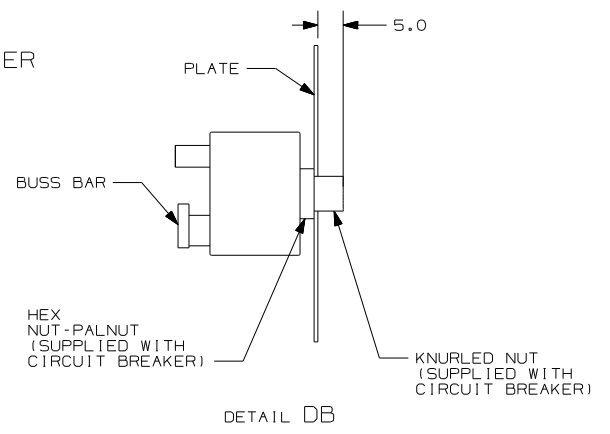
CIRCUIT BREAKER
 93654-02-000 (15)
 (15 AMP)
 SCREW
 G52-06-04B (15)

PLATE
 139067-06-CHT
 LABEL
 92574-14-000
 SCREW
 G11-10-12U (4)

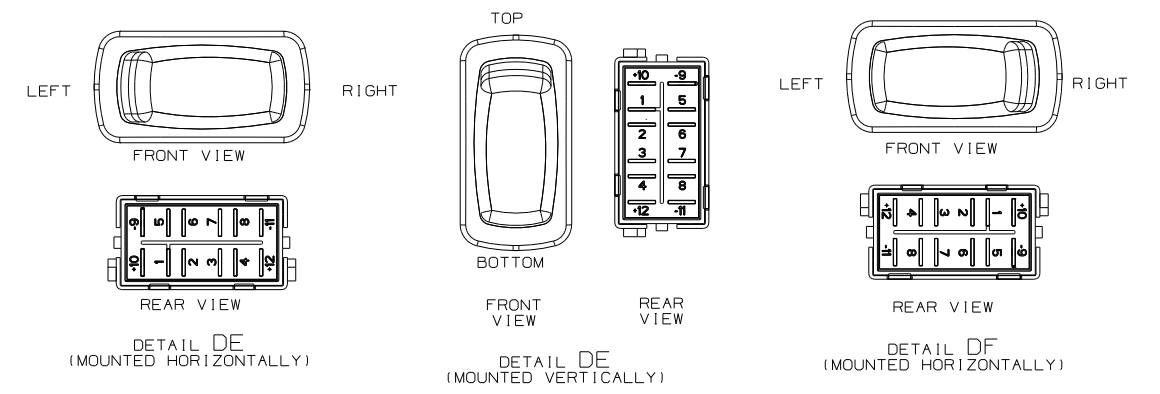
CIRCUIT BREAKER
 93654-01-000 (2)
 (6 AMP)
 SCREW
 G52-06-04B (2)

CIRCUIT BREAKER
 93655-01-000
 (25 AMP)
 SCREW
 G52-06-04B
 WASHER
 OME02B

CIRCUIT BREAKER (FRONT VIEW)



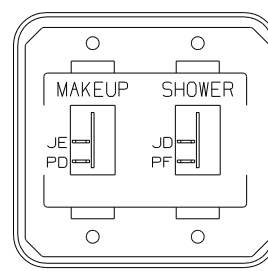
DETAIL DC



2 FOR SWITCH ORIENTATION SEE DETAIL DF.
 1 FOR SWITCH ORIENTATION SEE DETAIL DE.

NOTES:

FIRST USED		06 R40FD	
DO NOT SCALE DRAWING			
TITLE: WIRING INSTL-BODY, 12V			
SHEET 4	PART NO	154559	REV



SWITCH-ROCKER
135740-01-CHT (2)
SWITCH-BASE
135741-02-CHT
SWITCH-BEZEL
135742-20-CHT
SCREW
G11-08-08U (4)

DETAIL EA

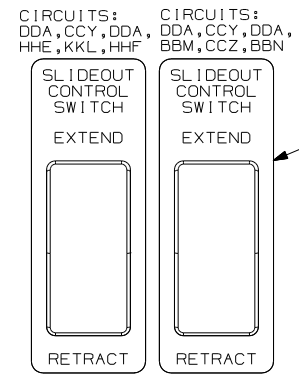
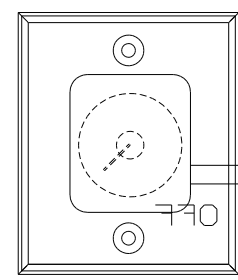


PLATE-SWITCH
144363-10-CHT (2)
SWITCH
108357-06-000 (2)
ACTUATOR
108356-02-CHT (2)
NUT
D65-08-00B (4)
LABEL
116220-01-000 (2)

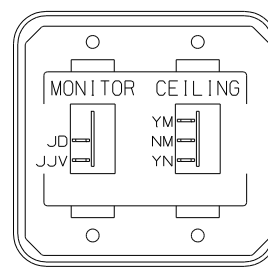
WARNING
UNDERSTAND OPERATOR'S MANUAL BEFORE USING KEEP PEOPLE AND OBSTRUCTIONS CLEAR OF SLIDEOUT ROOM WHEN OPERATING TO AVOID INJURY AND/OR PROPERTY DAMAGE

DETAIL EE



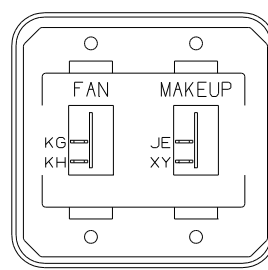
SWITCH
137889-01-000
SCREW
G11-06-10U (2)

DETAIL EH



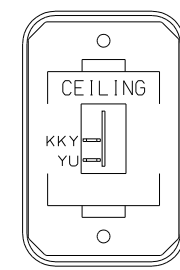
SWITCH-ROCKER
135740-01-CHT
135740-02-CHT
SWITCH-BASE
135741-02-CHT
SWITCH-BEZEL
135742-31-CHT
SCREW
G11-08-08U (4)

DETAIL EB



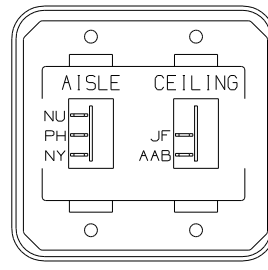
SWITCH-ROCKER
135740-01-CHT (2)
SWITCH-BASE
135741-02-CHT
SWITCH-BEZEL
135742-38-CHT
SCREW
G11-08-08U (4)

DETAIL EJ



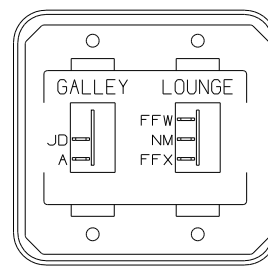
SWITCH-ROCKER
135740-01-CHT
SWITCH-BASE
135741-01-CHT
SWITCH-BEZEL
135742-07-CHT
SCREW
G11-08-08U (2)

DETAIL EF



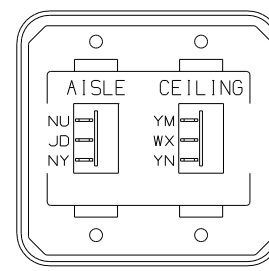
SWITCH-ROCKER
135740-01-CHT
135740-02-CHT
SWITCH-BASE
135741-02-CHT
SWITCH-BEZEL
135742-13-CHT
SCREW
G11-08-08U (4)

DETAIL EK



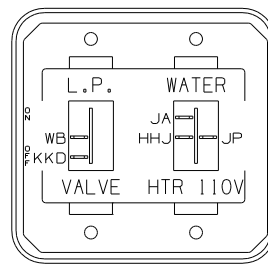
SWITCH-ROCKER
135740-01-CHT
135740-02-CHT
SWITCH-BASE
135741-02-CHT
SWITCH-BEZEL
135742-18-CHT
SCREW
G11-08-08U (4)

DETAIL EC



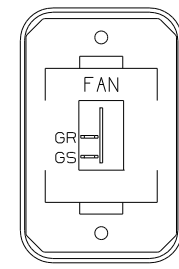
SWITCH-ROCKER
135740-02-CHT (2)
SWITCH-BASE
135741-02-CHT
SWITCH-BEZEL
135742-13-CHT
SCREW
G11-08-08U (4)

DETAIL EG (412)



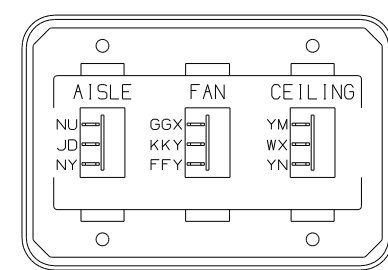
SWITCH-ROCKER
135740-01-CHT
135740-06-CHT
SWITCH-BASE
135741-02-CHT
SWITCH-BEZEL
135742-34-CHT
SCREW
G11-08-08U (4)

DETAIL EL



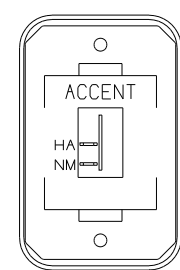
SWITCH-ROCKER
135740-01-CHT
SWITCH-BASE
135741-01-CHT
SWITCH-BEZEL
135742-12-CHT
SCREW
G11-08-08U (2)

DETAIL ED



SWITCH-ROCKER
135740-02-CHT (2)
135740-04-CHT
SWITCH-BASE
135741-03-CHT
SWITCH-BEZEL
135742-23-CHT
SCREW
G11-08-08U (4)
WIRE ASM-RESISTOR
140195-01-000

DETAIL EG (41Y)



SWITCH-ROCKER
135740-01-CHT
SWITCH-BASE
135741-01-CHT
SWITCH-BEZEL
135742-50-CHT
SCREW
G11-08-08U (2)

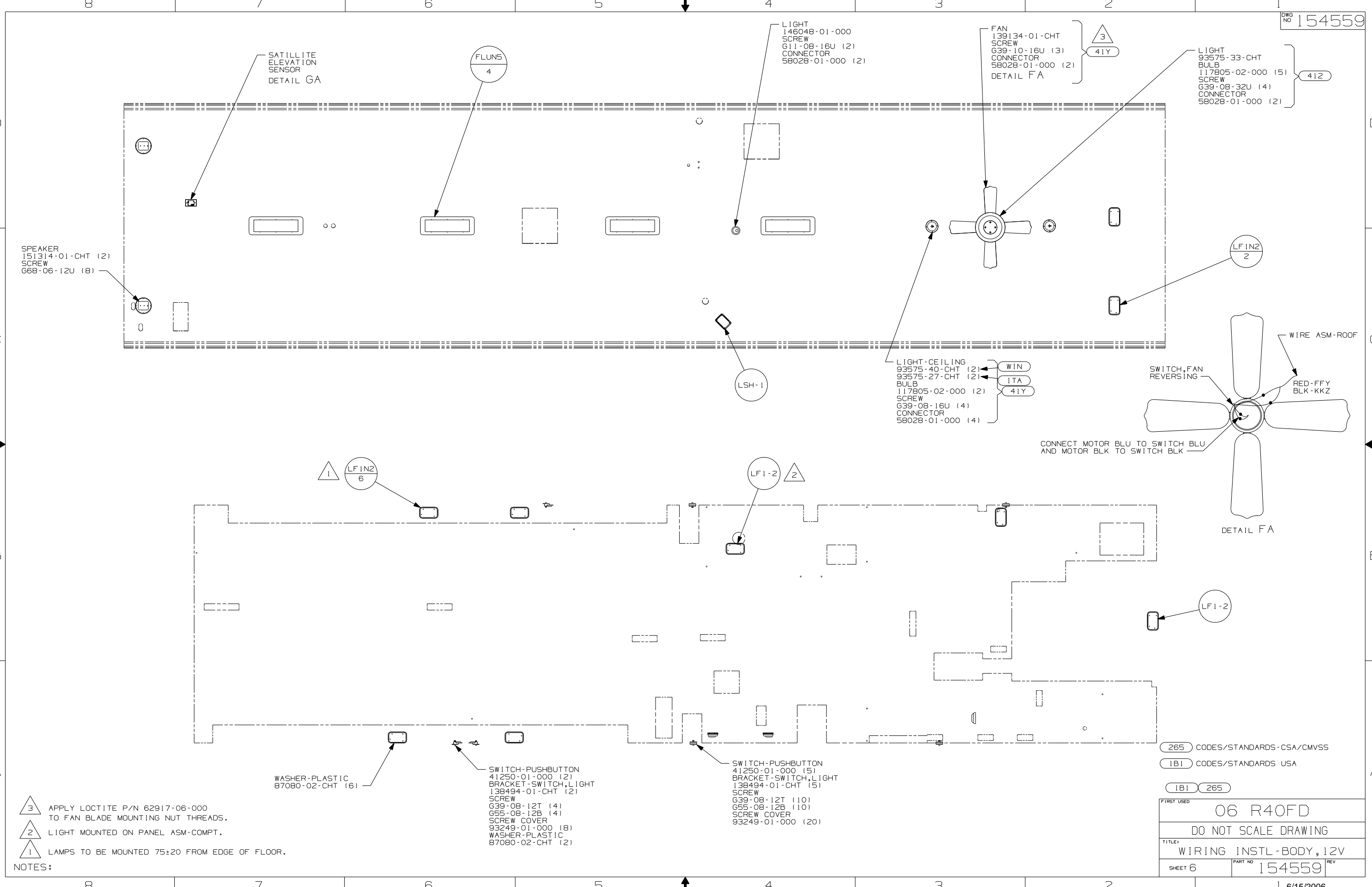
DETAIL EM

- (41Y) FAN - CEILING_BEDROOM
- (412) DECORATIVE LIGHT - CEILING
- (265) CODES/STANDARDS-CSA/CMVSS
- (1B1) CODES/STANDARDS USA

FIRST USED	
06 R40FD	
DO NOT SCALE DRAWING	
TITLE: WIRING INSTL-BODY, 12V	
SHEET 5	PART NO 154559

NOTES:
CONNECT WIRE ASM-RESISTOR, FAN TO 2-PIN HOUSING LOCATED BY THE SWITCH WIRES.





SPEAKER
151314-01-CHT (2)
SCREW
G68-06-12U (8)

SATILLITE
ELEVATION
SENSOR
DETAIL GA

FLUNS
4

LIGHT
146048-01-000
SCREW
G11-08-16U (2)
CONNECTOR
58028-01-000 (2)

FAN
139134-01-CHT
SCREW
G39-10-16U (3)
CONNECTOR
58028-01-000 (2)
DETAIL FA

LIGHT
93575-33-CHT
BULB
117805-02-000 (5)
SCREW
G39-08-32U (4)
CONNECTOR
58028-01-000 (2)

SPEAKER
151314-01-CHT (2)
SCREW
G68-06-12U (8)

LIGHT-CEILING
93575-40-CHT (2)
93575-27-CHT (2)
BULB
117805-02-000 (2)
SCREW
G39-08-16U (4)
CONNECTOR
58028-01-000 (4)

WIN
ITA
41Y

SWITCH,FAN
REVERSING

WIRE ASM-ROOF

RED-FFY
BLK-KKZ

CONNECT MOTOR BLU TO SWITCH BLU
AND MOTOR BLK TO SWITCH BLK

DETAIL FA

1 LFINZ
6

LF1-2 2

LF1-2

WASHER-PLASTIC
87080-02-CHT (6)

SWITCH-PUSHBUTTON
41250-01-000 (5)
BRACKET-SWITCH,LIGHT
138494-01-CHT (5)
SCREW
G39-08-12T (10)
G55-08-12B (10)
SCREW COVER
93249-01-000 (8)
WASHER-PLASTIC
87080-02-CHT (2)

SWITCH-PUSHBUTTON
41250-01-000 (5)
BRACKET-SWITCH,LIGHT
138494-01-CHT (5)
SCREW
G39-08-12T (10)
G55-08-12B (10)
SCREW COVER
93249-01-000 (20)

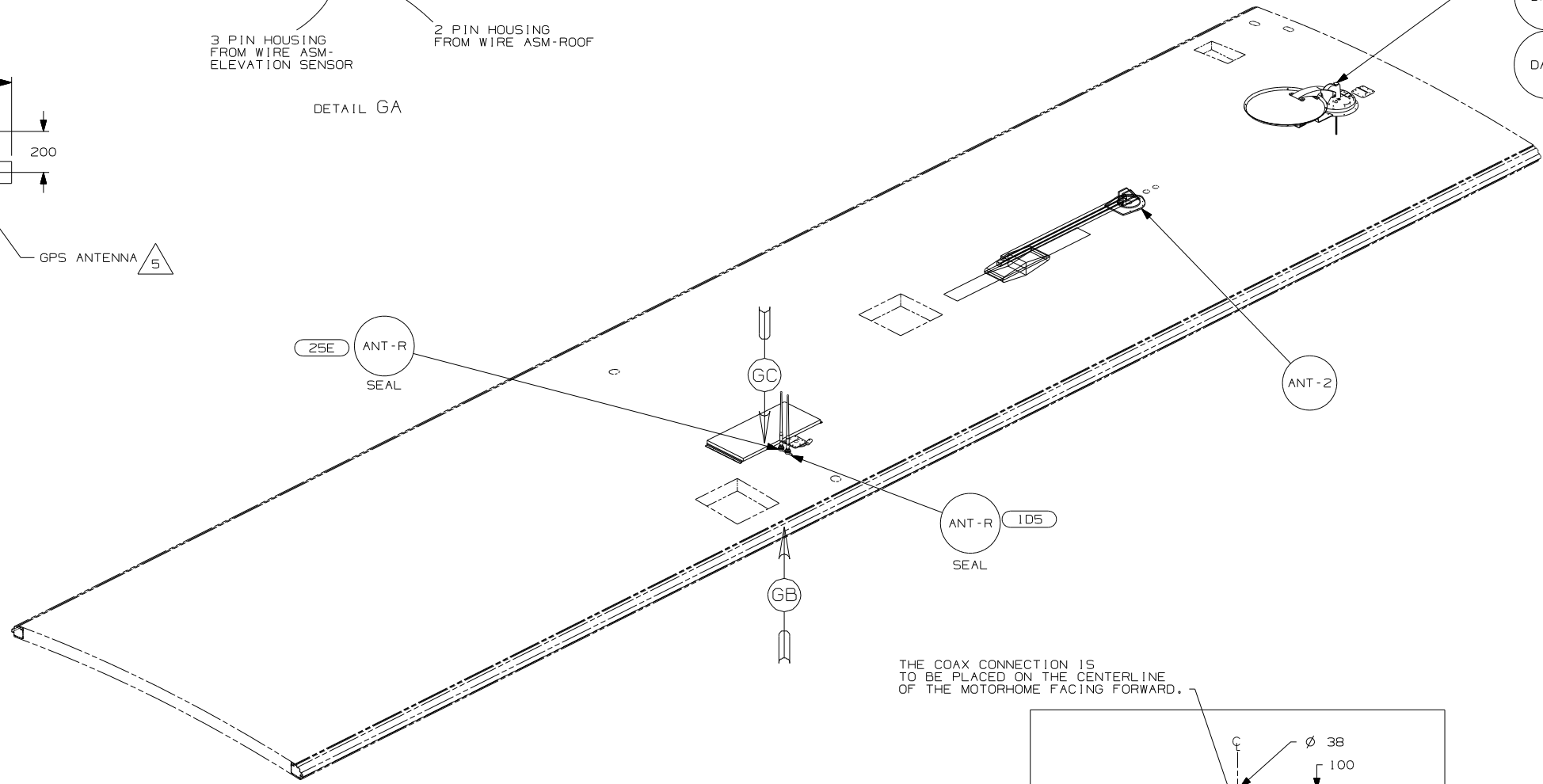
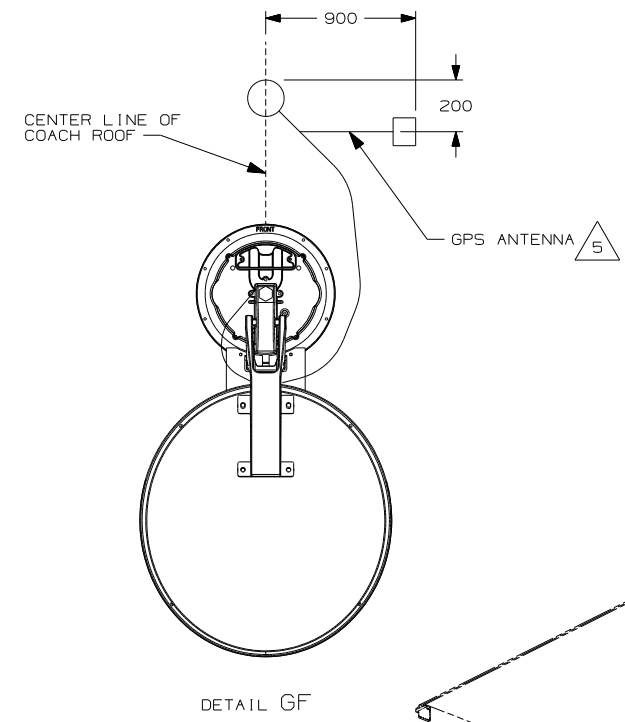
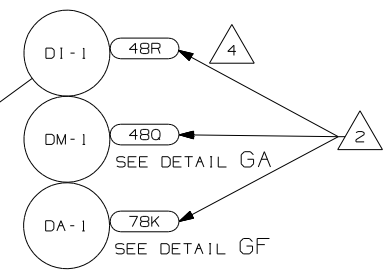
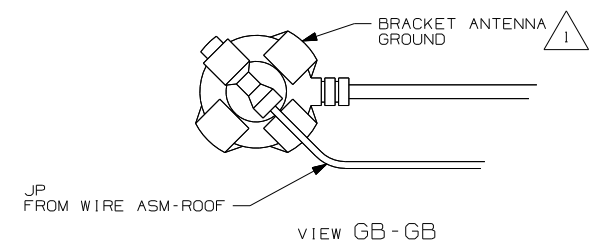
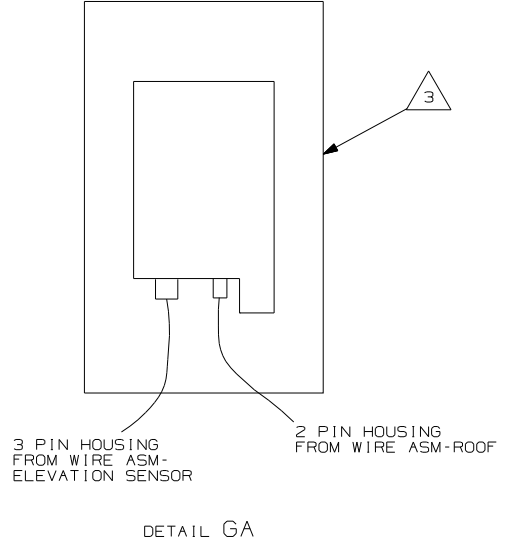
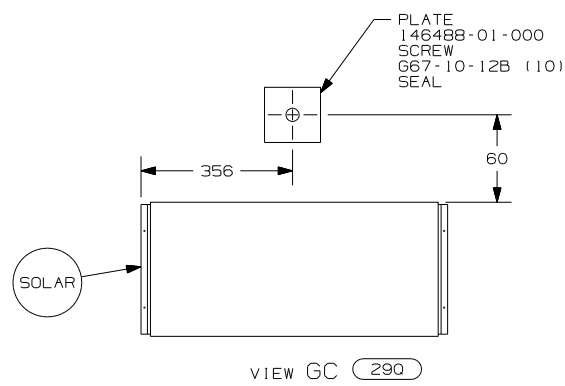
265 CODES/STANDARDS-CSA/CMVSS

1B1 CODES/STANDARDS USA

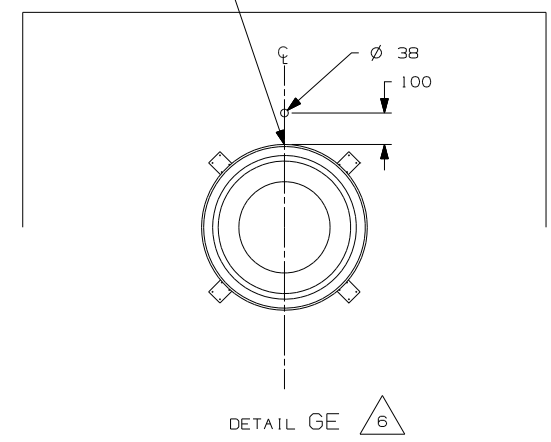
1B1 265

- NOTES:
- 3 APPLY LOCTITE P/N 62917-06-000 TO FAN BLADE MOUNTING NUT THREADS.
 - 2 LIGHT MOUNTED ON PANEL ASM-COMPT.
 - 1 LAMPS TO BE MOUNTED 75±20 FROM EDGE OF FLOOR.

FIRST USED	06 R40FD	
TITLE:	DO NOT SCALE DRAWING	
	WIRING INSTL-BODY, 12V	
SHEET 6	PART NO	154559
	REV	



THE COAX CONNECTION IS TO BE PLACED ON THE CENTERLINE OF THE MOTORHOME FACING FORWARD.



- NOTES:
- △ 6 REMOVE ALL SHIPPING RESTRAINTS AND FIRMLY INSERT THE SUPPLIED PLUGS INTO THE APPROPRIATE SIZED HOLES AS SPECIFIED IN THE INSTALLATION PROCESS.
 - △ 5 MOUNT GPS ANTENNA TO THE RIGHT OF THE SATELLITE AS SHOWN. SECURE CABLE WITH ROOF SEALANT.
 - △ 4 SEE DETAIL GE FOR SATELLITE LOCATION.
 - △ 3 SENSOR SUPPLIED WITH SATELLITE ASSEMBLY.
 - △ 2 SEE MANUFACTURER'S INSTALLATION FOR ADDITIONAL INFORMATION.
 - △ 1 WRAP BRACKET LEGS AROUND ANTENNA BASE.

- (48R) SAT. SYS. IN-MOTION W/O RCVR.
- (290) SOLAR PANEL - 10 WATT
- (25E) REAR STEREO SYSTEM W/CD
- (105) ENTERTAINMENT CTR/EXT W/CD
- (78K) SATELLITE DISH-AUTOMATIC
- (480) SATELLITE DISH & ELEV.SENSOR
- (265) CODES/STANDARDS-CSA/CMVSS
- (1B1) CODES/STANDARDS USA

FIRST USED	
06 R40FD	
DO NOT SCALE DRAWING	
TITLE:	
WIRING INSTL - BODY, 12V	
SHEET 7	PART NO 154559