



DANGER

Danger of electrical shock, burns or death. Always remove all power sources before attempting any repair, service or diagnostic work. Power can be present from shore power, generator, inverter or battery. All power sources must be disabled and secured before performing any service.

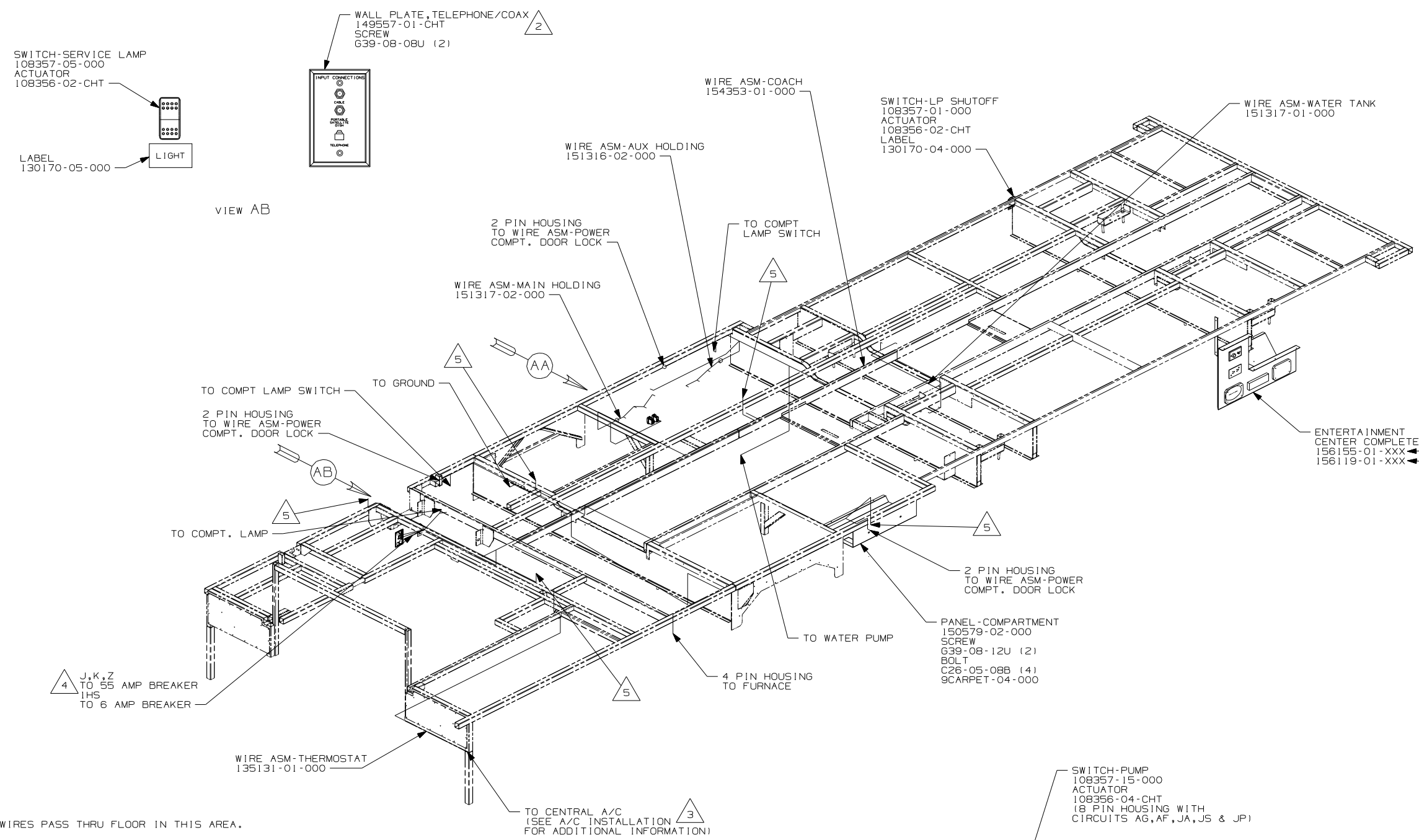


CAUTION

If you lack the skills, tools or equipment to perform diagnostic or repair work leave such work to an authorized Winnebago Industries dealer or other qualified shop.

DRAWING NO.	FEATURE
154350-01	(WIN)
154350-02	(ITA)

RELEASE	REV DATE	DWG NO
A		154350
REV ZONE	REVISION RECORD	DATE DFR-ORIG



- 5 WIRES PASS THRU FLOOR IN THIS AREA.
- 4 SEE WIRING INSTL-CHASSIS FOR ADDITIONAL INFORMATION.
- 3 FOR MORE INFORMATION SEE A/C INSTL.
- 2 CONNECT TELEPHONE WIRES TO MATCHING COLORS ON PLATE-TELEPHONE.

1. ALL WIRES TO BE SECURED WITH CLAMP 10495 OR 10497 OR WIRE TIE 8343 OR 108046 EVERY 600MM, USE SCREW G67-XX-XXX OR G56-XX-XXX AS APPROPRIATE FOR INSTALLATION.

NOTES:

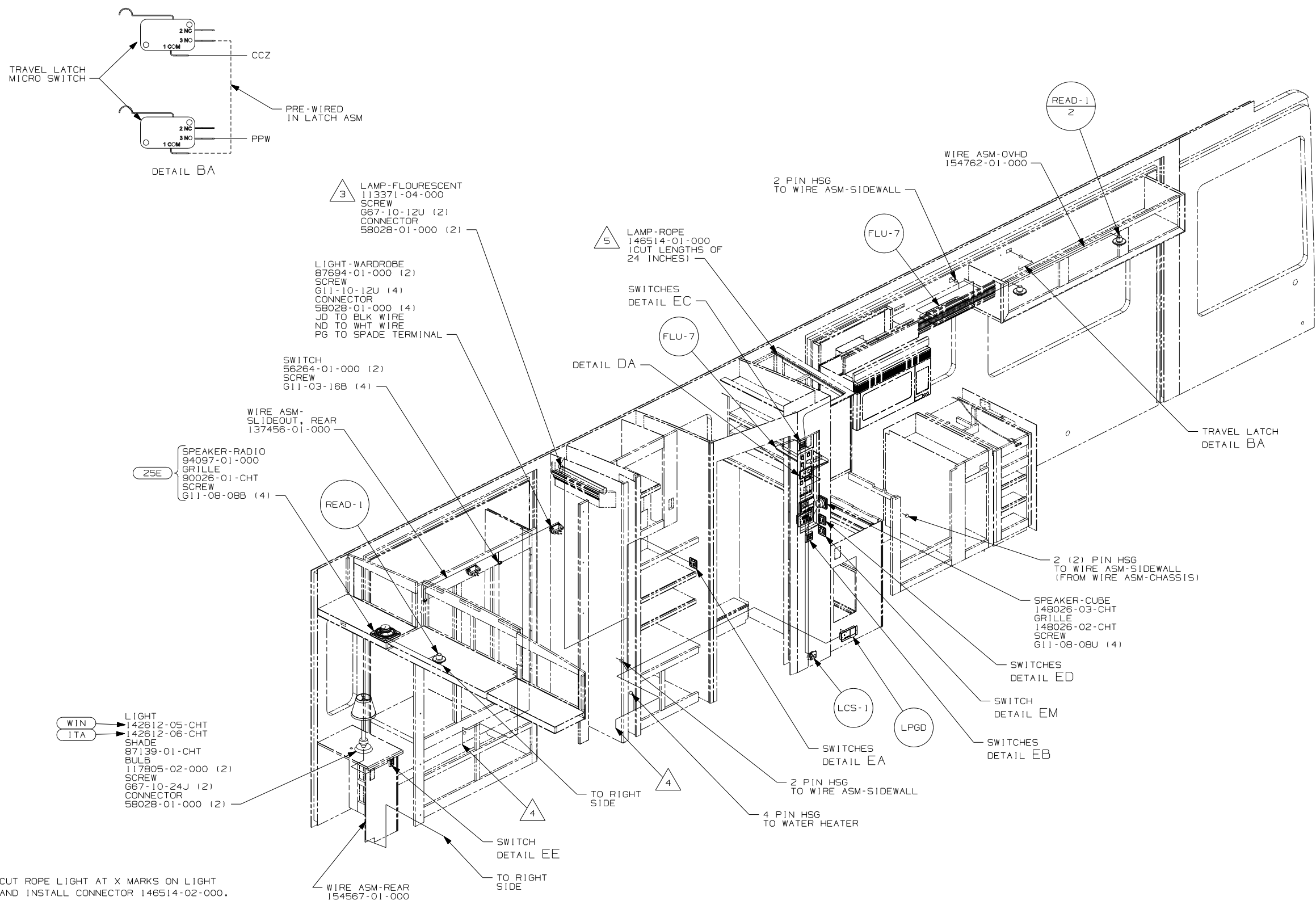
- (ID5) ENTERTAINMENT CENTR/EXT W/CD
- (ID3) ENTERTAINMENT CENTR/EXT TV-DVD
- (ITA) ITASCA ONLY
- (WIN) WINNEBAGO ONLY
- (265) CODES/STANDARDS-CSA/CMVSS
- (IB1) CODES/STANDARDS USA

WINNEBAGO		COPYRIGHT 2006 WINNEBAGO INDUSTRIES, INC.	
DFTR	ORIG. DATE		
CHKR	ALL DIMENSIONS ARE IN MILLIMETERS		
P.E.	FIRST USED	06 R36RD	
M.E.			
DSNR			
UNSPECIFIED TOLERANCES ARE:		MATERIAL:	
WHOLE DIM (X)	: 3		
ONE-PLACE (X.X)	: 1.5		
TWO-PLACE (X.XX)	: 0.50		
ANGLE	: 1°		
THIRD ANGLE PROJECTION			

FOR ELECTRICAL TORQUE SPECIFICATIONS SEE DWG NO. 128783-01-000

(X-X) FOR ELECTRICAL CALLOUTS SEE DWG NO. 121339-01-000

DO NOT SCALE DRAWING	
TITLE:	WIRING INSTL-BODY, 12V
SHEET 1 OF 7	PART NO 154350
REF:	1 6/15/2006



- △ 5 CUT ROPE LIGHT AT X MARKS ON LIGHT AND INSTALL CONNECTOR 146514-02-000.
- △ 4 WIRES ROUTE UP THRU FLOOR IN THIS AREA.
- △ 3 LOCATE LAMP SO THAT THE BALLAST IS AGAINST SIDEWALL.

2. COAX CABLE IS INTEGRATED INTO THE WIRE ASM'S.
1. ALL WIRES TO BE SECURED WITH CLAMP 10495 OR 10497 OR WIRE TIE 8343 OR 108046 EVERY 600MM, USE SCREW 667-XX-XXX OR 656-XX-XXX AS APPROPRIATE FOR INSTALLATION.

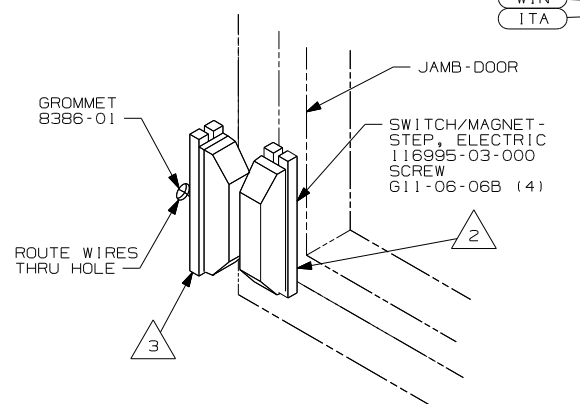
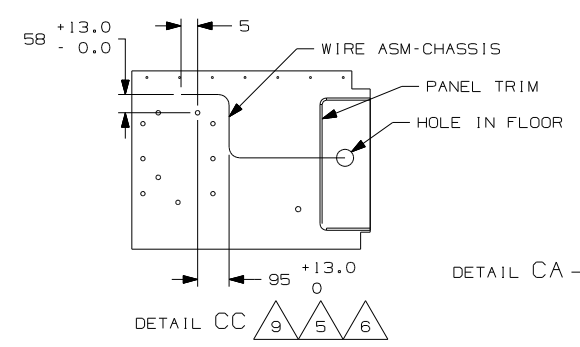
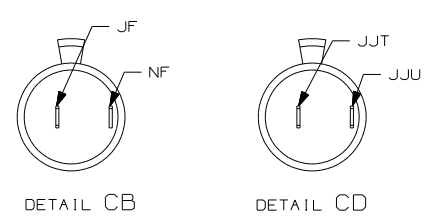
NOTES:

- (25E) STEREO SYSTEM W/CD REAR
- (ITA) ITASCA ONLY
- (WIN) WINNEBAGO ONLY
- (265) CODES/STANDARDS-CSA/CMVSS
- (1B1) CODES/STANDARDS USA

FIRST USED	
06 R36RD	
DO NOT SCALE DRAWING	
TITLE:	
WIRING INSTL-BODY, 12V	
SHEET 2	PART NO 154350 REV

FOR ELECTRICAL TORQUE SPECIFICATIONS SEE DWG NO. 128783-01-000

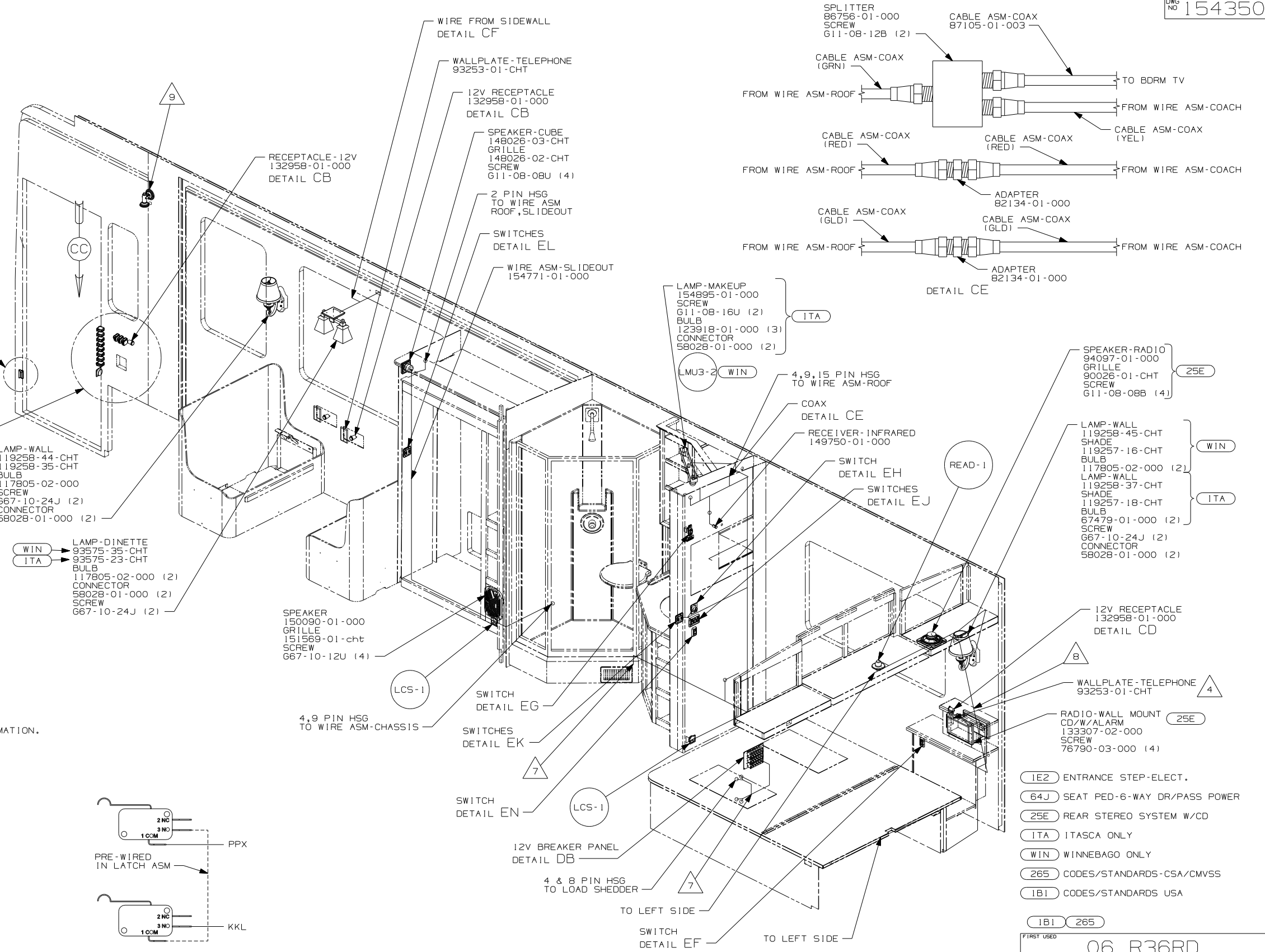
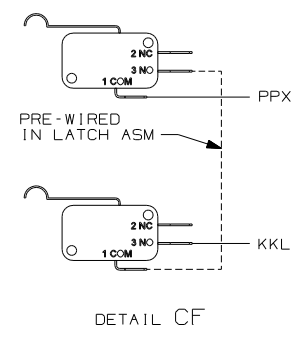
(X-X) FOR ELECTRICAL CALLOUTS SEE DWG NO. 121339-01-000



- 9 SEE WIRING INSTL-FRONT END FOR ADDITIONAL INFORMATION.
- 8 SEE WIRING INSTL-BODY, 110V FOR PROPER ROUTING AND CLAMPING OF WIRES.
- 7 WIRES ROUTE UP THRU FLOOR IN THIS AREA.
- 6 WITHOUT (64J) TIE BACK TO MAIN WIRE ASM.
- 5 ROUTE WIRE UNDER FLOOR SHOWN.
- 4 CONNECT TELEPHONE WIRES TO MATCHING COLORS ON PLATE-TELEPHONE.
- 3 MOUNT MAGNET USING PILOT HOLES IN SCREEN DOOR FRAME. MOUNT WITH MAGNET TOWARD SWITCH.
- 2 MOUNT SWITCH AND SPACER TO BLOCK ON JAMB ADJUST HEIGHT TO MATCH MAGNET.

1. ALL WIRES TO BE SECURED WITH CLAMP 10495 OR 10497 OR WIRE TIE 8343 OR 108046 EVERY 600MM, USE SCREW G67-XX-XXX OR G56-XX-XXX AS APPROPRIATE FOR INSTALLATION.

NOTES:

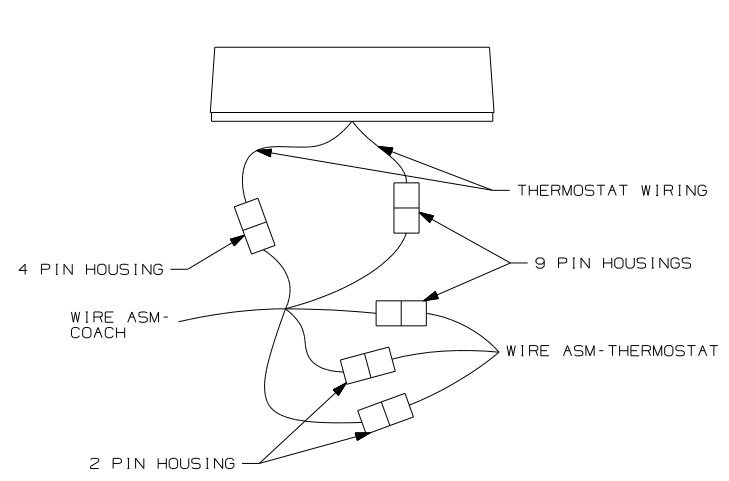


FOR ELECTRICAL TORQUE SPECIFICATIONS SEE DWG NO. 128783-01-000

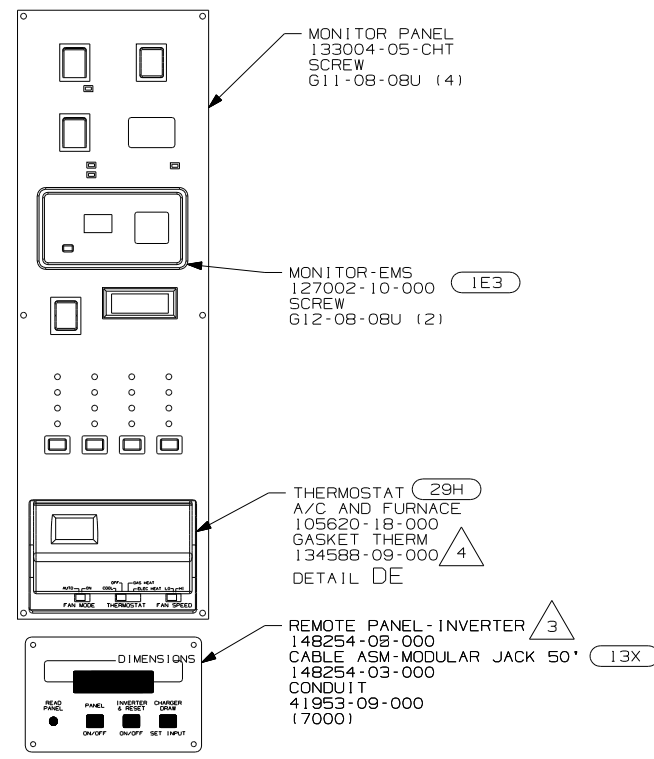
FOR ELECTRICAL CALLOUTS SEE DWG NO. 121339-01-000

- (IE2) ENTRANCE STEP-ELECT.
- (64J) SEAT PED-6-WAY DR/PASS POWER
- (25E) REAR STEREO SYSTEM W/CD
- (ITA) ITASCA ONLY
- (WIN) WINNEBAGO ONLY
- (265) CODES/STANDARDS-CSA/CMVSS
- (1B1) CODES/STANDARDS USA

FIRST USED	
06 R36RD	
DO NOT SCALE DRAWING	
TITLE: WIRING INSTL-BODY, 12V	
SHEET 3	PART NO 154350 REV



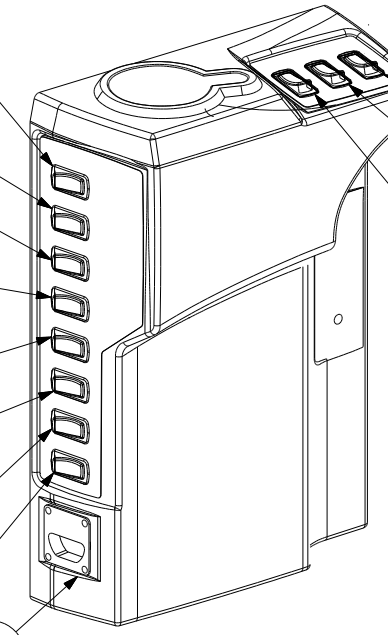
DETAIL DE



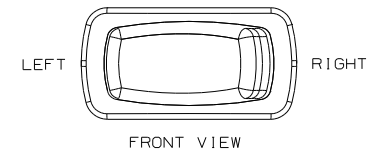
DETAIL DA

2 INSTALL GASKET ON BACK SIDE OF ONE PLACE INSTALLATION OF THERMOSTAT, MAKING SURE THAT THE GASKET COVERS AND SEALS THE HOLE THAT THE WIRES PASS THROUGH.

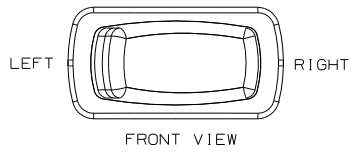
- 1 SWITCH-LOUNGE LAMP 145638-10-CHT (CONNECTS HOUSING WITH CIRCUITS FFV,PL,FFX)
- 2 SWITCH-PORCH 145638-01-CHT (CONNECTS HOUSING WITH CIRCUITS NM,PJ)
- 1 SWITCH-DOOR LOCKS 145638-09-CHT (CONNECTS HOUSING WITH CIRCUITS PX,MK,PY)
- 1 SWITCH-COMPARTMENT DOOR LOCKS 145638-09-CHT (CONNECTS HOUSING WITH CIRCUITS DDZ,MK,EEA)
- 1 SWITCH-AWNING SELECTOR 145638-07-CHT (CONNECTS HOUSING WITH CIRCUITS FFP,FFV,FFU,FFL)
- 1 SWITCH-AWNING CONTROL 145638-09-CHT (CONNECTS HOUSING WITH CIRCUITS FFM,FFU,FFK,FFR,FFV,FFN)
- 2 SWITCH-STEP 145638-01-CHT (CONNECTS HOUSING WITH CIRCUITS ER,ES)
- 1 SWITCH-BATTERY DISCONNECT 145638-09-CHT (CONNECTS HOUSING WITH CIRCUITS KF,LH,LJ,LJ,LG,KF)



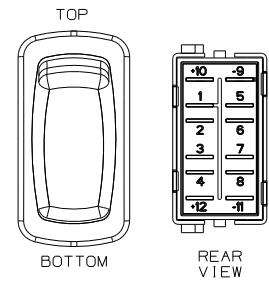
DETAIL DC



DETAIL DG (MOUNTED HORIZONTALLY)

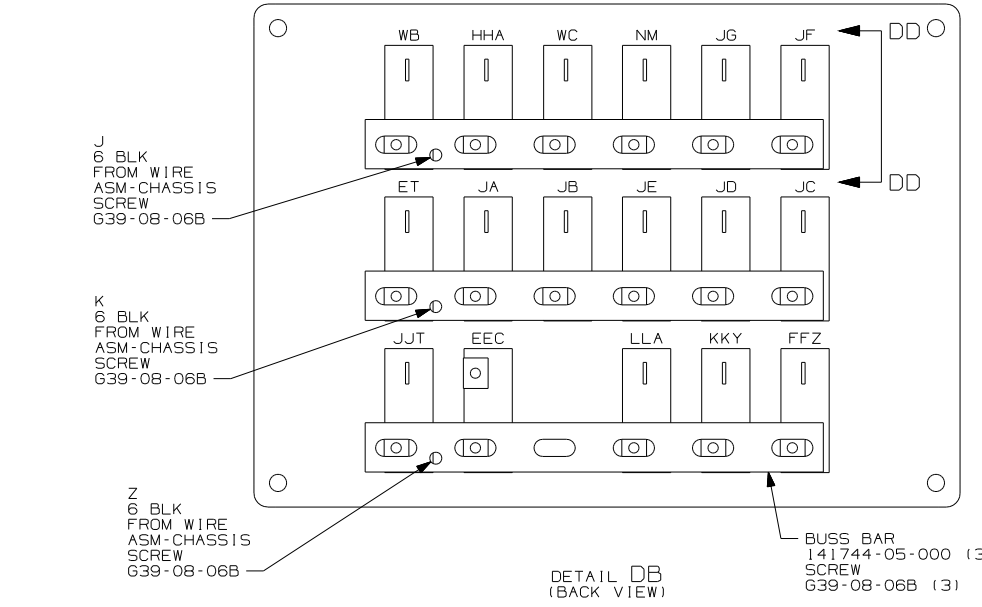


(MOUNTED HORIZONTALLY)

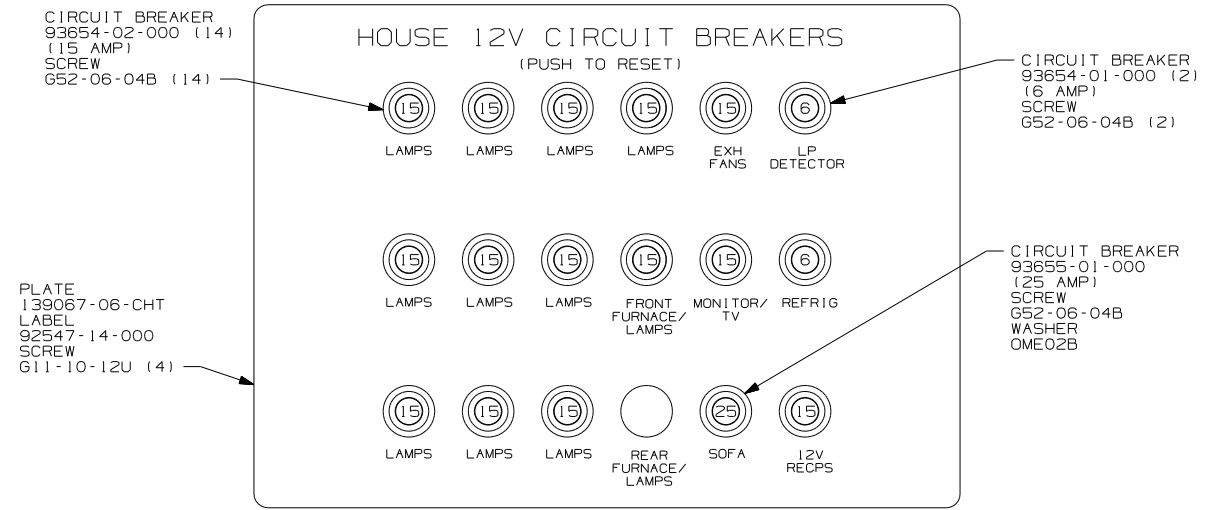


(MOUNTED VERTICALLY)

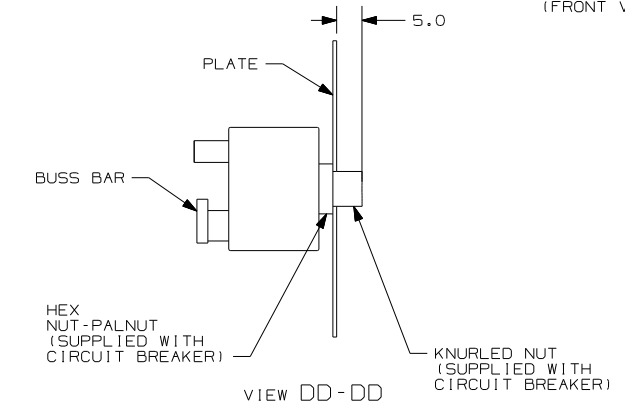
2 FOR SWITCH ORIENTATION, SEE DETAIL DG.
 1 FOR SWITCH ORIENTATION, SEE DETAIL DF.
 3 CONNECT CIRCUIT WB FROM COACH WIRING TO RED WIRE ON REMOTE PANEL.



DETAIL DB (BACK VIEW)



DETAIL DB (FRONT VIEW)

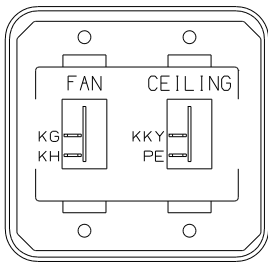


FOR ELECTRICAL TORQUE SPECIFICATIONS SEE DWG NO. 128783-01-000

FOR ELECTRICAL CALLOUTS SEE DWG NO. 121339-01-000

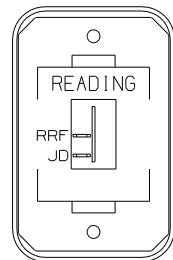
- 29H A/C CENTRAL_HEAT PUMP
- 13X INVERTER/CHARGER 2.0 KW
- 1E3 ENERGY MANAGEMENT SYSTEM
- 265 CODES/STANDARDS-CSA/CMVSS
- 1B1 CODES/STANDARDS USA

FIRST USED	
06 R36RD	
DO NOT SCALE DRAWING	
TITLE: WIRING INSTL-BODY, 12V	
SHEET 4	PART NO 154350 REV



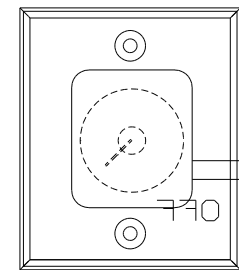
SWITCH-ROCKER
135740-01-CHT (2)
SWITCH-BASE
135741-02-CHT
SWITCH-BEZEL
135742-33-CHT
SCREW
G11-08-08U (4)

DETAIL EA



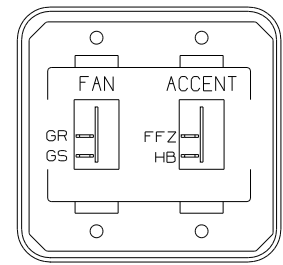
SWITCH-ROCKER
135740-01-CHT
SWITCH-BASE
135741-01-CHT
SWITCH-BEZEL
135742-51-CHT
SCREW
G11-08-08U (2)

DETAIL EE



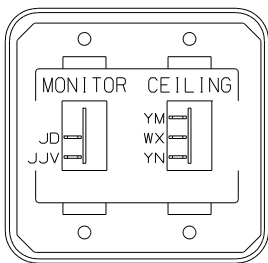
SWITCH
137889-01-000
SCREW
G11-06-10U (2)

DETAIL EH



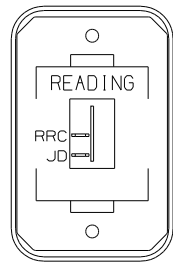
SWITCH-ROCKER
135740-01-CHT (2)
SWITCH-BASE
135741-02-CHT
SWITCH-BEZEL
135742-49-CHT
SCREW
G11-06-16U (4)

DETAIL EM



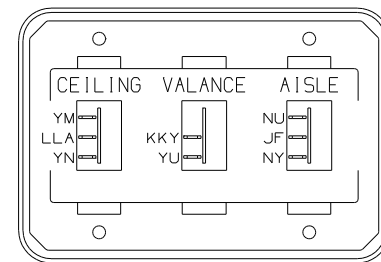
SWITCH-ROCKER
135740-01-CHT
135740-02-CHT
SWITCH-BASE
135741-02-CHT
SWITCH-BEZEL
135742-31-CHT
SCREW
G11-08-08U (4)

DETAIL EB



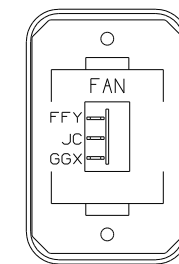
SWITCH-ROCKER
135740-01-CHT
SWITCH-BASE
135741-01-CHT
SWITCH-BEZEL
135742-51-CHT
SCREW
G11-08-08U (2)

DETAIL EF



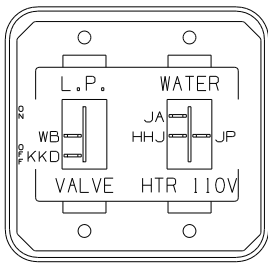
SWITCH-ROCKER
135740-01-CHT
135740-02-CHT (2)
SWITCH-BASE
135741-03-CHT
SWITCH-BEZEL
135742-22-CHT
SCREW
G11-08-08U (4)

DETAIL EJ



SWITCH-ROCKER
135740-04-CHT
SWITCH-BASE
135741-01-CHT
SWITCH-BEZEL
135742-12-CHT
SCREW
G11-08-08U (2)
WIRE ASM-RESISTOR,FAN
140195-01-000

DETAIL EN (41Y)



SWITCH-ROCKER
135740-01-CHT
135740-06-CHT
SWITCH-BASE
135741-02-CHT
SWITCH-BEZEL
135742-34-CHT
SCREW
G11-08-08U (4)

DETAIL EC

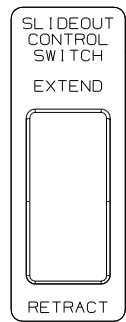
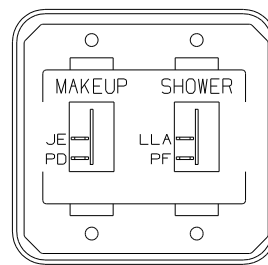


PLATE-SWITCH
144363-09-000
SWITCH
108357-06-CHT
ACTUATOR
108356-02-CHT
NUT
D65-08-00B (2)
LABEL
116220-01-000
DDA,CCY,DDA,
BBM,CCZ,BBN

LABEL-WARNING
116549-01-000

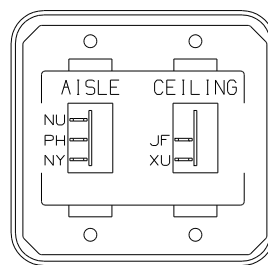
WARNING
UNDERSTAND OPERATOR'S MANUAL
BEFORE USING KEEP PEOPLE AND
OBSTRUCTIONS CLEAR OF SLIDEOUT
ROOM WHEN OPERATING TO AVOID
INJURY AND/OR PROPERTY DAMAGE

DETAIL EG



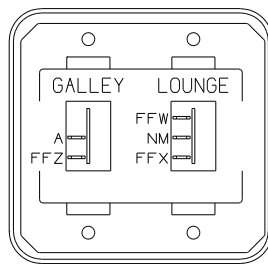
SWITCH-ROCKER
135740-01-CHT (2)
SWITCH-BASE
135741-02-CHT
SWITCH-BEZEL
135742-20-CHT
SCREW
G11-08-08U (4)

DETAIL EK



SWITCH-ROCKER
135740-01-CHT
135740-02-CHT
SWITCH-BASE
135741-02-CHT
SWITCH-BEZEL
135742-13-CHT
SCREW
G11-08-08U (4)

DETAIL EL



SWITCH-ROCKER
135740-01-CHT
135740-02-CHT
SWITCH-BASE
135741-02-CHT
SWITCH-BEZEL
135742-18-CHT
SCREW
G11-08-08U (4)

DETAIL ED

- (41Y) FAN - CEILING_BEDROOM
- (265) CODES/STANDARDS-CSA/CMVSS
- (1B1) CODES/STANDARDS USA

(1B1) (265)

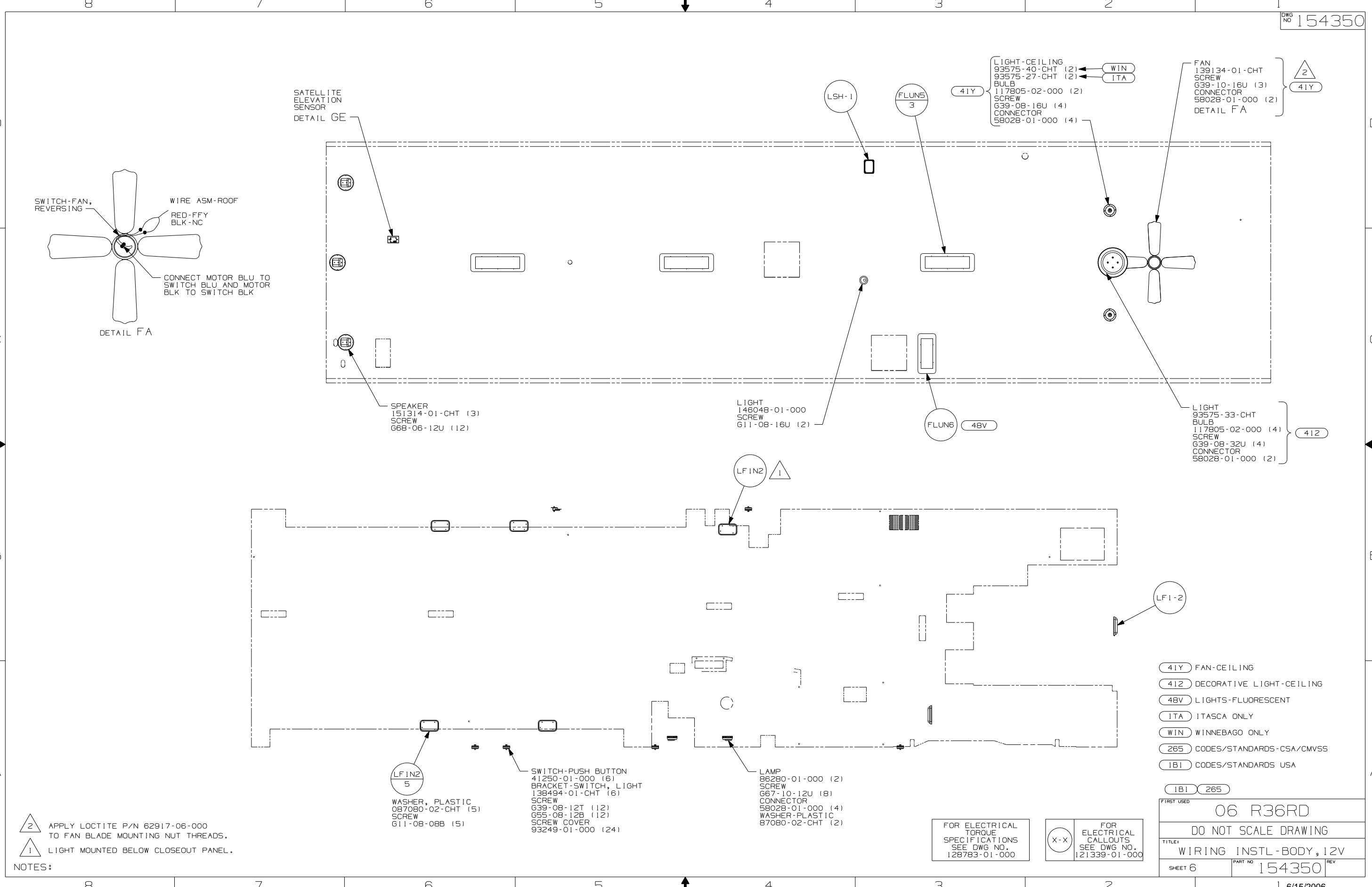
FIRST USED	06 R36RD
TITLE	DO NOT SCALE DRAWING
TITLE	WIRING INSTL-BODY, 12V
SHEET 5	PART NO 154350 REV

CONNECT WIRE ASM-RESISTOR,FAN TO 2-PIN HOUSING LOCATED BY THE SWITCH WIRES.

FOR ELECTRICAL TORQUE SPECIFICATIONS SEE DWG NO. 128783-01-000

FOR ELECTRICAL CALLOUTS SEE DWG NO. 121339-01-000

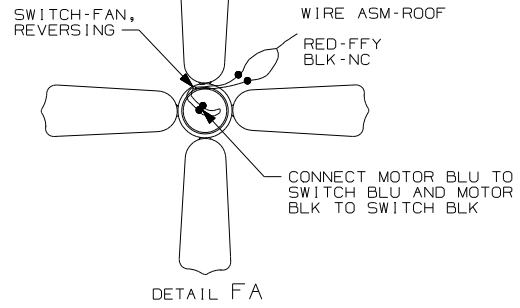
FOR ELECTRICAL TORQUE SPECIFICATIONS SEE DWG NO. 128783-01-000



- LIGHT-CEILING 93575-40-CHT (2)
- 93575-27-CHT (2)
- BULB 117805-02-000 (2)
- SCREW 639-08-16U (4)
- CONNECTOR 58028-01-000 (4)

- FAN 139134-01-CHT
- SCREW 639-10-16U (3)
- CONNECTOR 58028-01-000 (2)
- DETAIL FA

SATELLITE ELEVATION SENSOR
DETAIL GE



- SPEAKER 151314-01-CHT (3)
- SCREW 668-06-12U (12)

- LIGHT 146048-01-000
- SCREW 611-08-16U (2)

- LIGHT 93575-33-CHT
- BULB 117805-02-000 (4)
- SCREW 639-08-32U (4)
- CONNECTOR 58028-01-000 (2)

- LF1N2 5
- WASHER, PLASTIC 087080-02-CHT (5)
- SCREW 611-08-08B (5)

- SWITCH-PUSH BUTTON 41250-01-000 (6)
- BRACKET-SWITCH, LIGHT 138494-01-CHT (6)
- SCREW 639-08-12T (12)
- G55-08-12B (12)
- SCREW COVER 93249-01-000 (24)

- LAMP 86280-01-000 (2)
- SCREW 667-10-12U (8)
- CONNECTOR 58028-01-000 (4)
- WASHER-PLASTIC 87080-02-CHT (2)

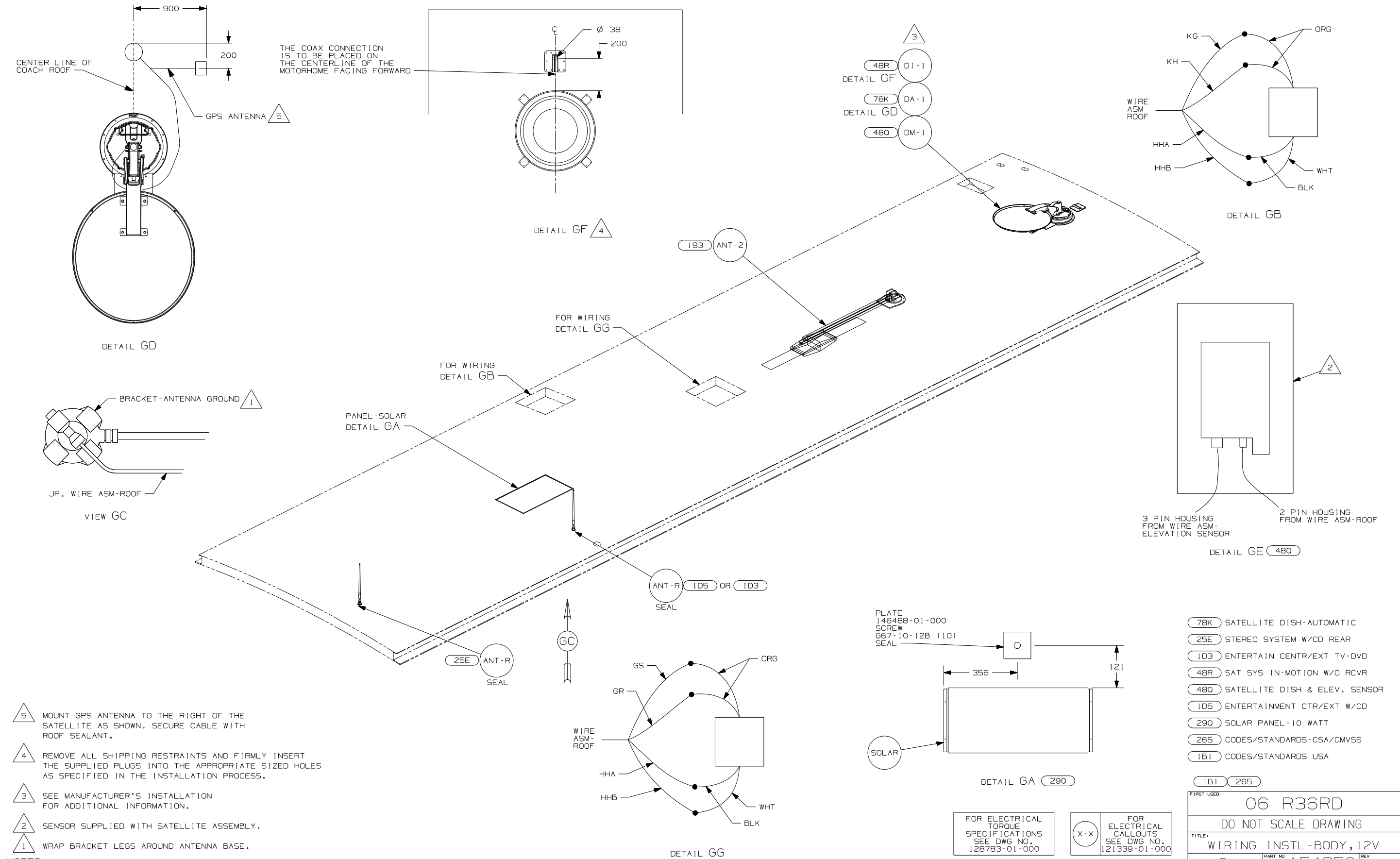
- 41Y FAN-CEILING
- 412 DECORATIVE LIGHT-CEILING
- 48V LIGHTS-FLUORESCENT
- ITA ITASCA ONLY
- WIN WINNEBAGO ONLY
- 265 CODES/STANDARDS-CSA/CMVSS
- 1B1 CODES/STANDARDS USA

NOTES:
 2 APPLY LOCTITE P/N 62917-06-000 TO FAN BLADE MOUNTING NUT THREADS.
 1 LIGHT MOUNTED BELOW CLOSEOUT PANEL.

FOR ELECTRICAL TORQUE SPECIFICATIONS SEE DWG NO. 128783-01-000

FOR ELECTRICAL CALLOUTS SEE DWG NO. 121339-01-000

FIRST USED		06 R36RD	
DO NOT SCALE DRAWING			
TITLE: WIRING INSTL - BODY, 12V			
SHEET 6	PART NO	154350	REV



- NOTES:
- 5 MOUNT GPS ANTENNA TO THE RIGHT OF THE SATELLITE AS SHOWN. SECURE CABLE WITH ROOF SEALANT.
 - 4 REMOVE ALL SHIPPING RESTRAINTS AND FIRMLY INSERT THE SUPPLIED PLUGS INTO THE APPROPRIATE SIZED HOLES AS SPECIFIED IN THE INSTALLATION PROCESS.
 - 3 SEE MANUFACTURER'S INSTALLATION FOR ADDITIONAL INFORMATION.
 - 2 SENSOR SUPPLIED WITH SATELLITE ASSEMBLY.
 - 1 WRAP BRACKET LEGS AROUND ANTENNA BASE.

- (78K) SATELLITE DISH-AUTOMATIC
- (25E) STEREO SYSTEM W/CD REAR
- (1D3) ENTERTAIN CENTR/EXT TV-DVD
- (48R) SAT SYS IN-MOTION W/O RCVR
- (480) SATELLITE DISH & ELEV. SENSOR
- (1D5) ENTERTAINMENT CTR/EXT W/CD
- (290) SOLAR PANEL-10 WATT
- (265) CODES/STANDARDS-CSA/CMVSS
- (1B1) CODES/STANDARDS USA

FOR ELECTRICAL TORQUE SPECIFICATIONS SEE DWG NO. 128783-01-000

(X-X) FOR ELECTRICAL CALLOUTS SEE DWG NO. 121339-01-000

FIRST USED	
06 R36RD	
DO NOT SCALE DRAWING	
TITLE: WIRING INSTL - BODY, 12V	
SHEET 7	PART NO 154350 REV