



DANGER

Danger of electrical shock, burns or death. Always remove all power sources before attempting any repair, service or diagnostic work. Power can be present from shore power, generator, inverter or battery. All power sources must be disabled and secured before performing any service.



CAUTION

If you lack the skills, tools or equipment to perform diagnostic or repair work leave such work to an authorized Winnebago Industries dealer or other qualified shop.

8		7		6		5		4		3		2		1	
		R36LD	R36RD	R40KD	R40FD										
RED	12-UL	136135-07-063	136135-07-063	136135-07-063	136135-07-063										
	12-CA	136136-07-063	136136-07-063	136136-07-063	136136-07-063										
MAIN	4-3 UL	136141-01-030	136141-01-030	136141-01-030	136141-01-030										
	4-3 CA	136142-01-030	136142-01-030	136142-01-030	136142-01-030										
GRN	12-UL	136135-08-063	136135-08-063	136135-08-063	136135-08-063										
	12-CA	136136-08-063	136136-08-063	136136-08-063	136136-08-063										
INVERTER CHARGER MAIN	10-UL	136137-01-035	136137-01-030	136137-01-030	136137-01-030										
	10-CA	136138-01-035	136138-01-030	136138-01-030	136138-01-030										
YEL	14-UL	136131-05-060	136131-05-043	136131-05-060	136131-05-055	22T									
	14-CA	136134-05-060	136134-05-043	136134-05-060	136134-05-055										
YEL-2	14-UL	136131-13-065	136131-13-065	136131-13-062	136131-13-061										
	14-CA	136134-13-065	136134-13-065	136134-13-062	136134-13-061										
YEL-3	14-UL	136131-17-020	136131-17-020	136131-17-020	136131-17-020										
	14-CA	136134-17-020	136134-17-020	136134-17-020	136134-17-020										
GLD	12-UL	136135-10-105	136135-10-065	136135-10-075	136135-10-076	54E 21M									
	12-CA	136136-10-105	136136-10-065	136136-10-075	136136-10-076										
WHT	12 UL	136135-09-040	136135-09-040	136135-09-035	136135-09-060										
	12 CA	136136-09-040	136136-09-040	136136-09-035	136136-09-060										
INVERTER CHARGER SUB MAIN	10-UL	136137-01-035	136137-01-035	136137-01-030	136137-01-030										
	10-CA	136138-01-035	136138-01-035	136138-01-030	136138-01-030										
BLU	14-UL	136131-02-065	136131-02-150	136131-02-110	136131-02-130										
	14-CA	136134-02-065	136134-02-150	136134-02-110	136134-02-130										
BRN	14-UL	136131-03-140	136131-03-205	136131-03-140	136131-03-170										
	14-CA	136134-03-140	136134-03-205	136134-03-140	136134-03-170										
PUR	14-UL	136131-04-140	136131-04-140	136131-04-170	136131-04-272										
	14-CA	136134-04-140	136134-04-140	136134-04-170	136134-04-272										
BLK	14-UL	136131-06-065	136131-06-061	136131-06-080	136131-06-070										
	14-CA	136134-06-065	136134-06-061	136134-06-080	136134-06-070										
SIL	14-UL	136131-11-065	136131-11-057	136131-11-080	136131-11-070	214									
	14-CA	136134-11-065	136134-11-057	136134-11-080	136134-11-070										
GRY	14-UL	-----	-----	-----	136131-15-061	14C									
	14-CA	-----	-----	-----	136134-15-061										
GROUND MAIN		136145-01-025	136145-01-025	136145-01-025	136145-01-025										
GROUND SUB MAIN		136145-01-025	136145-01-025	136145-01-025	136145-01-025										
GROUND ATS		136145-01-007	136145-01-007	136145-01-007	136145-01-007										
GROUND INVERTER		136145-01-014	136145-01-014	136145-01-014	136145-01-014										
CABLE ASM. GEN.		136148-02-105	136148-02-105	136148-02-116	136148-02-116										
CONDUIT ASM-CENTRAL A/C		151704-01-032	151704-01-032	151704-01-038	151704-01-038										

- 214 DISHWASHER DRAWER STYLE
- 54E WASHER/DRYER
- 22T VACUUM SYSTEM - CENTRAL
- 14C FIREPLACE-ELECTRIC
- 21M WASHER/DRYER PREP
- 265 CODES/STANDARDS - CSA/CMVSS
- 1B1 CODES/STANDARDS - USA
- 1B1 265

WINNEBAGO COPYRIGHT 2004 WINNEBAGO INDUSTRIES, INC.

DFTR _____ ORIG. DATE _____

CHKR _____ ALL DIMENSIONS ARE IN MILLIMETERS

P.E. _____

M.E. _____ FIRST USED _____

DSNR _____ 06 R-SERIES

UNSPECIFIED TOLERANCES ARE: MATERIAL:

WHOLE DIM (X) : _____

ONE-PLACE (X.X) : _____

TWO-PLACE (X.XX) : _____

ANGLE : _____

THIRD ANGLE PROJECTION

DO NOT SCALE DRAWING

TITLE: LOAD CENTER/ATS ASM

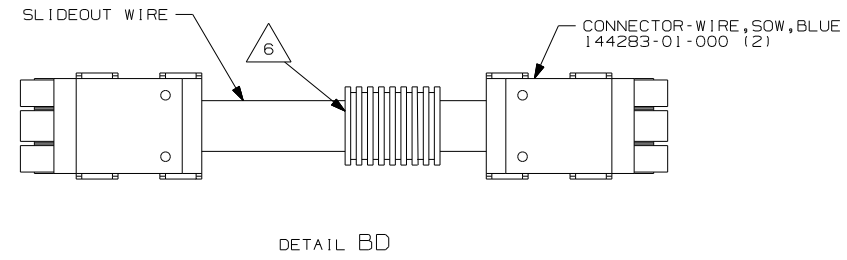
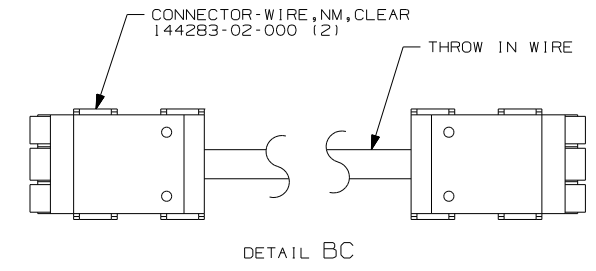
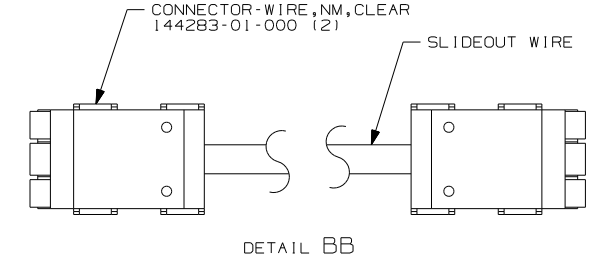
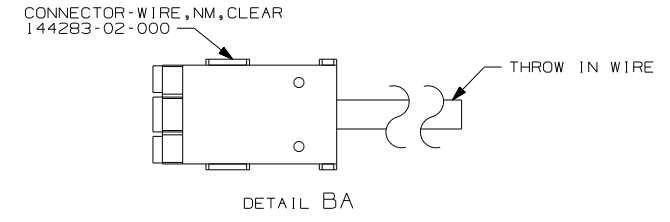
SHEET 1 OF 3 PART NO 153378

REF: 12/13/2005

SEE DETAIL BA FOR CONNECTOR INSTALLATION.

NOTES:

	8	7	6	5
		R36LD	R36RD	R40KD
		R40FD		
SLIDEOUT #1 WIRE #1		136151-03-055	136151-03-036	136151-03-060
SLIDEOUT #1 WIRE #2		-----	136151-06-036	136151-06-042
SLIDEOUT #1 WIRE #3		-----	136151-11-035	136151-11-028
SLIDEOUT #2 WIRE #1		136151-04-020	-----	136151-04-020
SLIDEOUT #3 WIRE #1		136151-02-020	136151-02-035	136151-02-021
SLIDEOUT #3 WIRE #2		136151-06-020	136151-13-035	136151-06-021
SLIDEOUT #3 WIRE #3		136151-11-020 (214)	136151-02-050	136151-11-021 (214)
SLIDEOUT #3 WIRE #4		136151-02-040	-----	136151-02-050
SLIDEOUT #4 WIRE #1		-----	-----	136151-04-020
THROW IN WIRE #1	14-UL	136131-04-050	136131-03-030	136131-02-003
	14-CA	136134-04-050	136134-03-030	136134-02-003
THROW IN WIRE #2	14-UL	136131-04-138	136131-04-091	136131-02-065
	14-CA	136134-04-138	136134-04-091	136134-02-065
THROW IN WIRE #3	14-UL	136131-11-013	136131-11-008	136131-11-020
	14-CA	136134-11-013	136134-11-008	136134-11-020
THROW IN WIRE #4	14-UL	136131-02-055	136131-13-018	136131-04-075
	14-CA	136134-02-055	136134-13-018	136134-04-075
THROW IN WIRE #5	14-UL	136131-02-008 (ID5) (ID3)	136131-04-060	136131-04-080
	14-CA	136134-02-008 (ID5) (ID3)	136134-04-060	136134-04-080
THROW IN WIRE #6	14-UL	-----	136131-02-008 (ID5)	136131-03-045
	14-CA	-----	136134-02-008 (ID5)	136134-03-045
THROW IN WIRE #7	14-UL	-----	136131-02-030 (ID3)	136131-04-066
	14-CA	-----	136134-02-030 (ID3)	136134-04-066
THROW IN WIRE #8	14-UL	136131-03-010	136131-02-005	136131-02-035 (ID3)
	14-CA	136134-03-010	136134-02-005	136134-02-035 (ID3)
THROW IN WIRE #9	14-UL	-----	136131-02-010 (ID5)	136131-02-025 (ID3) (ID5)
	14-CA	-----	136134-02-010 (ID5)	136134-02-025 (ID3) (ID5)
THROW IN WIRE #10	14-UL	-----	136131-02-050	136131-15-015 (I4C)
	14-CA	-----	136134-02-050	136134-15-015 (I4C)



- (14J) LOUNGE CHAIR-EURO ULTRATHR
- (14D) LOUNGE CHAIR-EURO LEATHER
- (440) LOUNGE CHAIR WITH CABINET
- (ID5) ENTERTAINMENT CENTR/EXT W/CD
- (ID3) ENTERTAIN CENTR/EXT TV-DVD
- (I4C) FIREPLACE-ELECTRIC
- (214) DISHWASHER DRAWER STYLE
- (265) CODES/STANDARDS-CSA/CMVSS
- (IB1) CODES/STANDARDS-USA

- WITH (440) OR (14D) OR (14J)
 - SEE DETAIL BC FOR CONNECTOR INSTALLATION.
 - SEE DETAIL BB FOR CONNECTOR INSTALLATION.
 - SEE DETAIL BA FOR CONNECTOR INSTALLATION.
- NOTES:

- APPLY 300MM OF CONDUIT-CONVOLUTE 41953-05-000 OVER WIRE AT DIMENSION SHOWN AND SECURE BOTH ENDS OF TUBING TO WIRE WITH TAPE 8363-01-000.
- SEE DETAIL BD FOR CONNECTOR INSTALLATION.

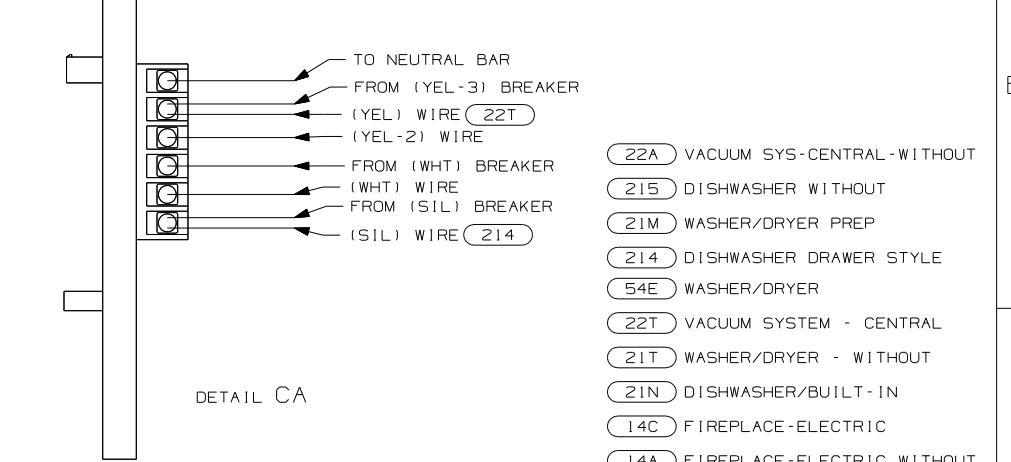
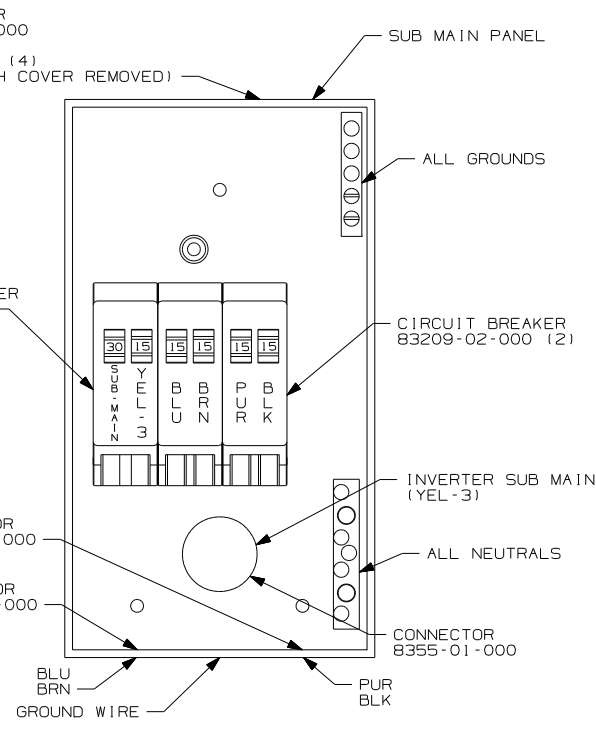
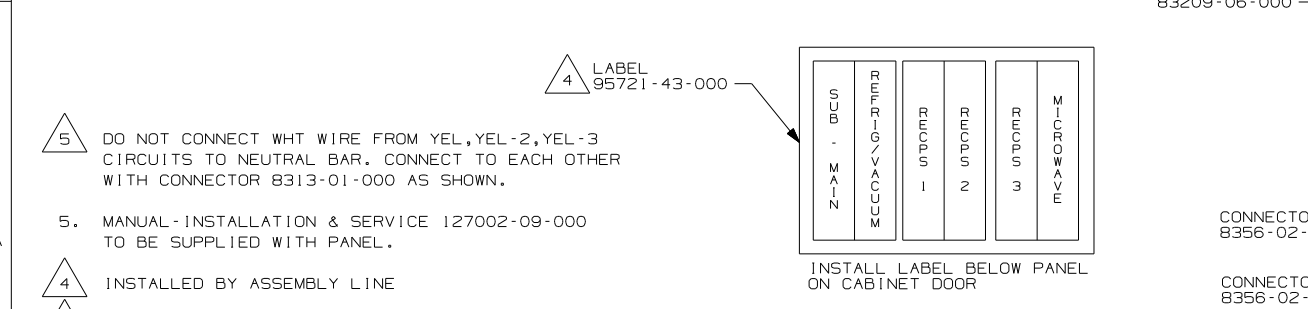
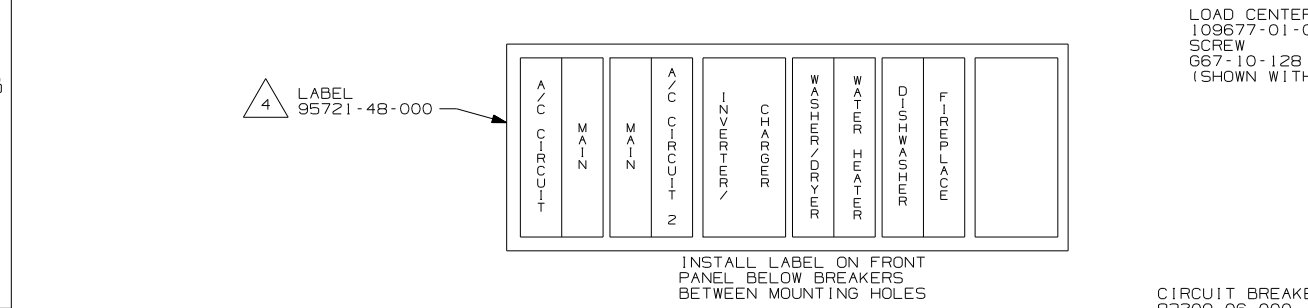
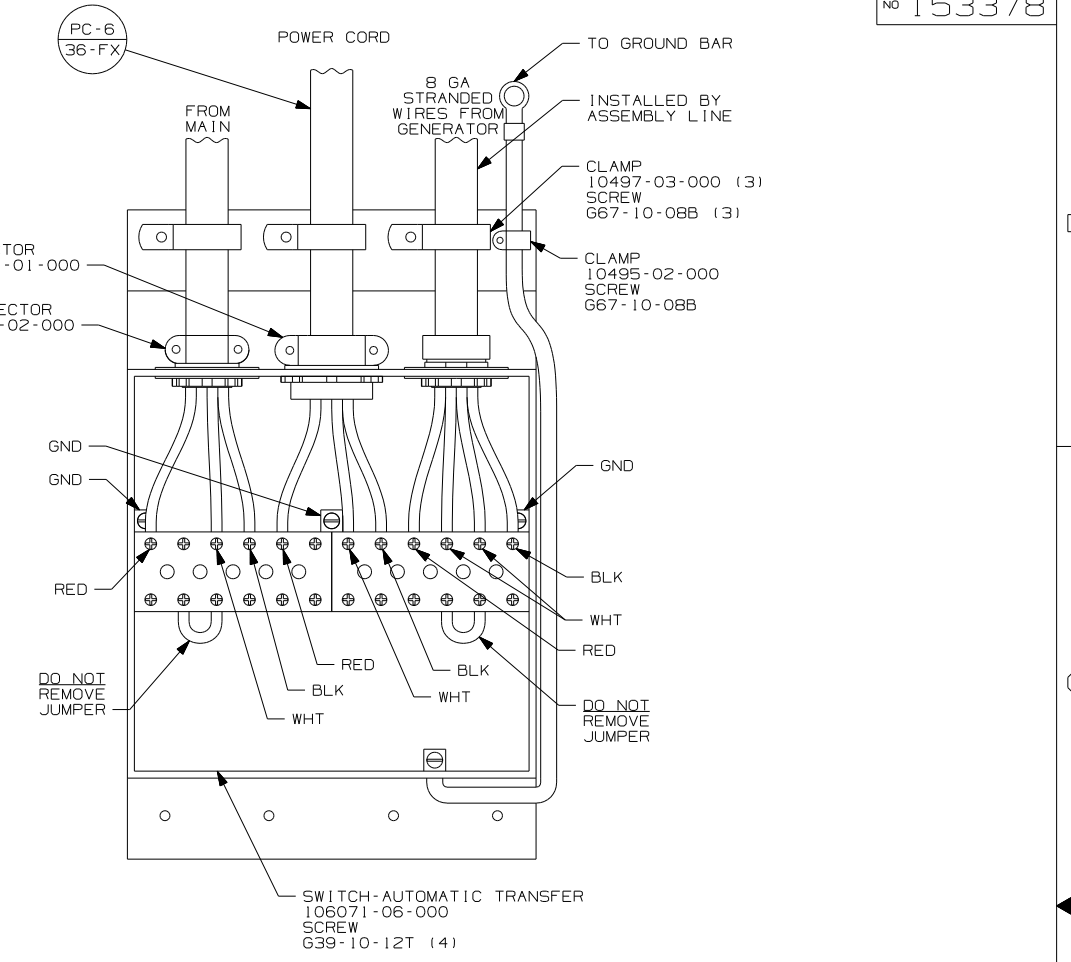
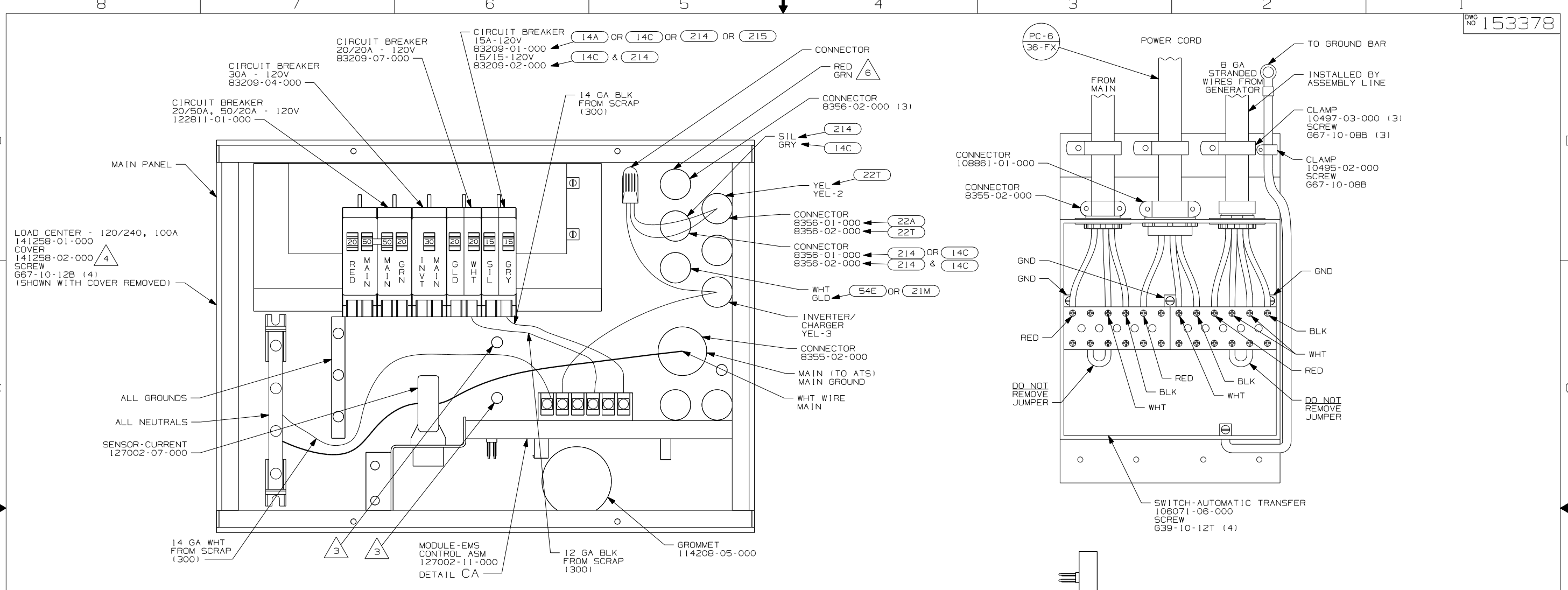
FIRST USED

06 R-SERIES

DO NOT SCALE DRAWING

TITLE: LOAD CENTER/ATS ASM

SHEET 2 PART NO 153378 REV AD



- (22A) VACUUM SYS-CENTRAL-WITHOUT
- (215) DISHWASHER WITHOUT
- (21M) WASHER/DRYER PREP
- (214) DISHWASHER DRAWER STYLE
- (54E) WASHER/DRYER
- (22T) VACUUM SYSTEM - CENTRAL
- (21T) WASHER/DRYER - WITHOUT
- (21N) DISHWASHER/BUILT-IN
- (14C) FIREPLACE-ELECTRIC
- (14A) FIREPLACE-ELECTRIC WITHOUT
- (265) CODES/STANDARDS - CSA/CMVSS
- (1B1) CODES/STANDARDS - USA

- NOTES:**
1. ALL GROUND WIRES TO BE COVERED WITH TUBING 8041-02-000.
 2. WIRE MUST BE 500 LONG INSIDE BOX.
 3. ATTATCH WIRES ON BACK OF LOAD CENTER WITH WIRE TIE 116673-01-000.
 4. INSTALLED BY ASSEMBLY LINE
 5. MANUAL-INSTALLATION & SERVICE 127002-09-000 TO BE SUPPLIED WITH PANEL.
 5. DO NOT CONNECT WHT WIRE FROM YEL, YEL-2, YEL-3 CIRCUITS TO NEUTRAL BAR. CONNECT TO EACH OTHER WITH CONNECTOR 8313-01-000 AS SHOWN.

FOR ELECTRICAL TORQUE SPECIFICATIONS SEE DWG NO. 128783-01-000

FOR ELECTRICAL CALLOUTS SEE DWG NO. 121339-01-000

FIRST USED	
06 R-SERIES	
DO NOT SCALE DRAWING	
TITLE: LOAD CENTER/ATS ASM	
SHEET 3	PART NO 153378 REV AD