



**DANGER**

**Danger of electrical shock, burns or death.** Always remove all power sources before attempting any repair, service or diagnostic work. Power can be present from shore power, generator, inverter or battery. All power sources must be disabled and secured before performing any service.

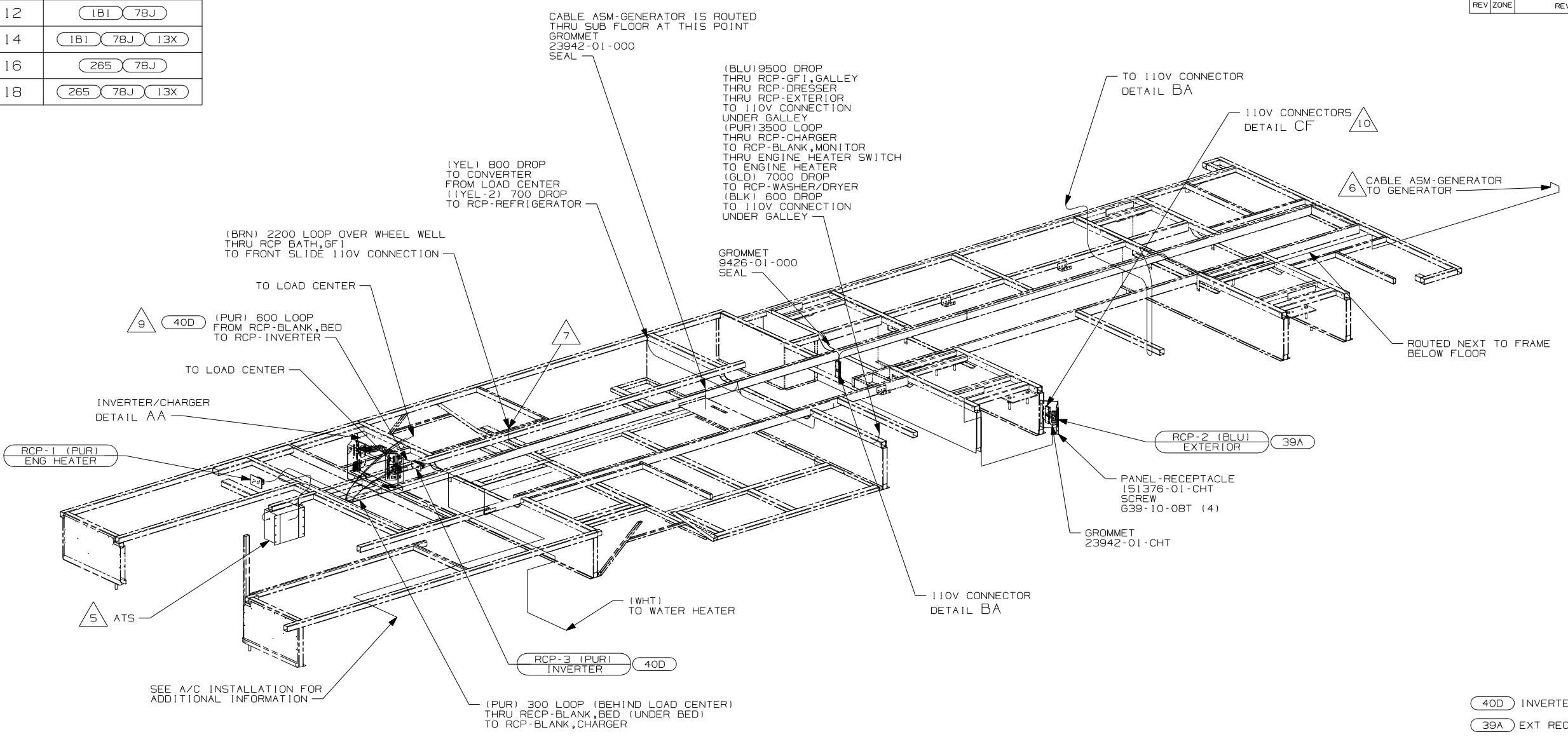


**CAUTION**

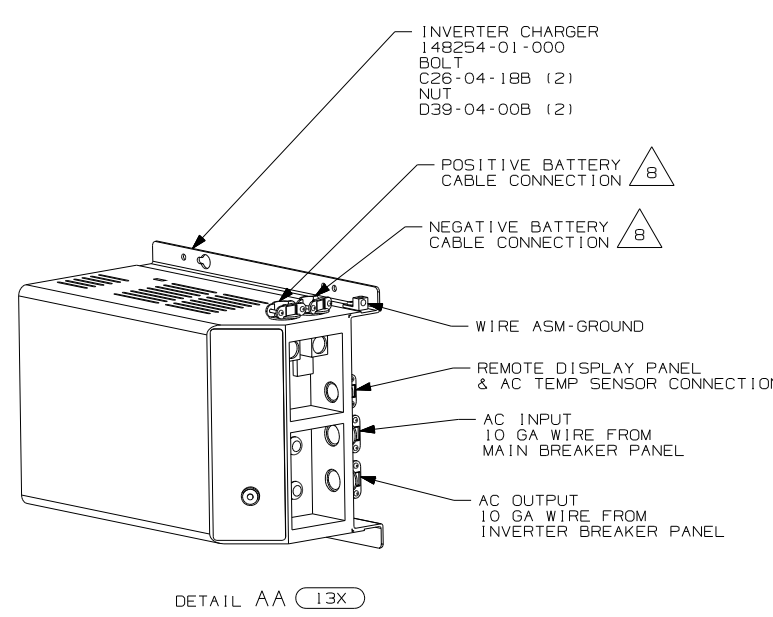
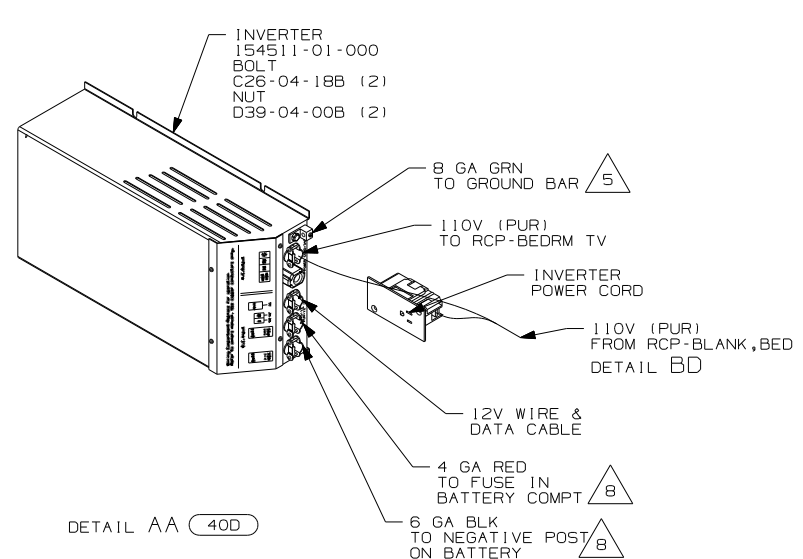
If you lack the skills, tools or equipment to perform diagnostic or repair work leave such work to an authorized Winnebago Industries dealer or other qualified shop.

DRAWING NO.	FEATURE
154197-12	(1B1) (78J)
154197-14	(1B1) (78J) (13X)
154197-16	(265) (78J)
154197-18	(265) (78J) (13X)

RELEASE	REV/DATE	ORIG NO	154197
REV ZONE	REVISION RECORD	DATE	DFT-0R16

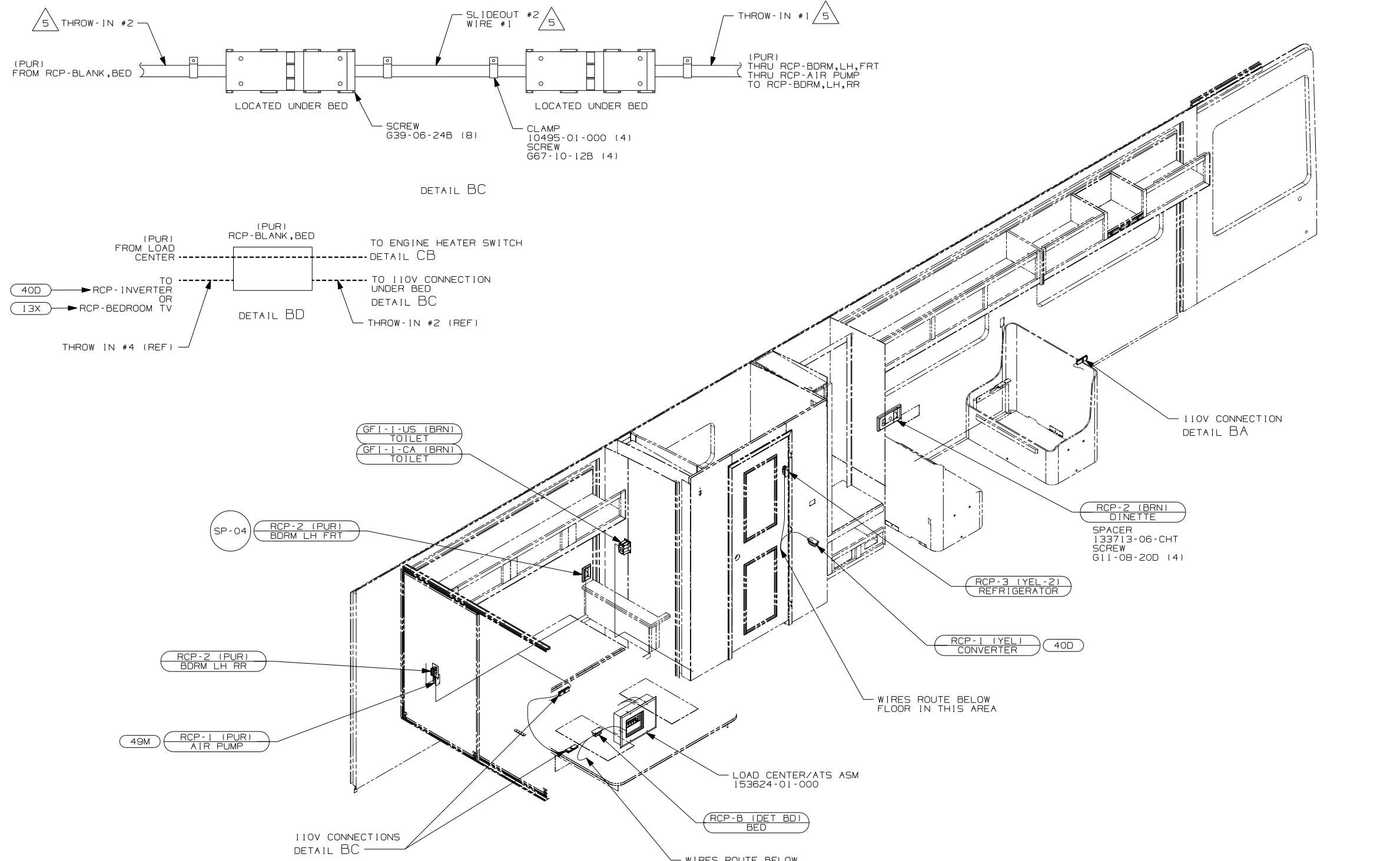


- 10 LOCATE 110V CONNECTOR BEHIND EXT RECP PANEL.
  - 9 CUT LOOP & CONNECT AS SHOWN IN DETAIL AA.
  - 8 SEE WIRING INSTL-CHASSIS FOR ADDITIONAL INFORMATION.
  - 7 ROUTE WIRES WITH WATER LINES THRU FLOOR.
  - 6 FOR MORE INFORMATION SEE GENERATOR INSTALLATION.
  - 5 FOR MORE INFORMATION SEE LOAD CENTER/ATS ASM.
4. FOR MORE INFORMATION SEE WIRING DIAGRAM-BODY, 110V.
  3. ALL GROUND WIRE TO BE COVERED WITH TUBING 8041-02-000.
  2. ALL 110V WIRE TO BE CLAMPED WITH CLAMP 10497-05-000 WITHIN 200MM OF OUTLET BOXES, USE SCREW G67-10-12B.
  1. ALL WIRES TO BE SECURED WITH CLAMP 10495 OR 10497 OR WIRE TIE 8343 OR 108046 EVERY 600MM, USE SCREW G67-XX-XXX OR G56-XX-XXX AS APPROPRIATE FOR INSTALLATION.



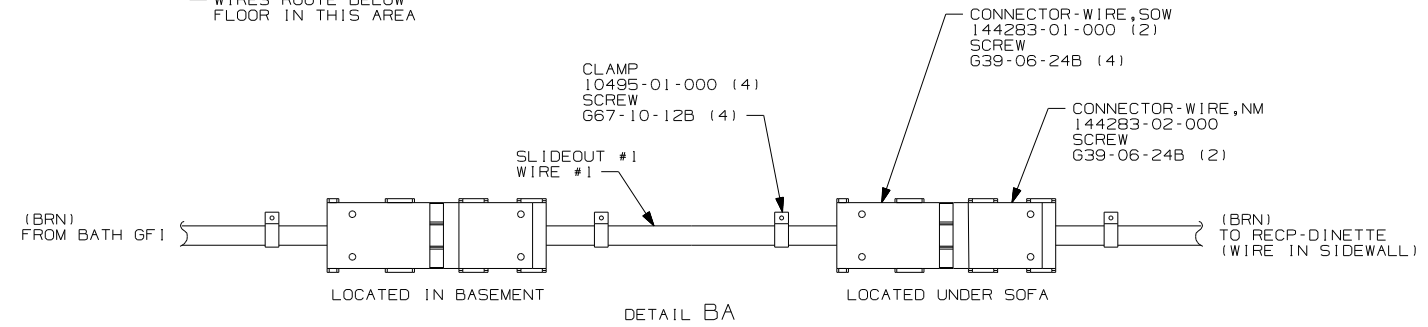
- 40D INVERTER-DC/AC, 600 WATT
- 39A EXT RECEPTACLE DPLX 120VAC
- 78J ELECTRICAL SYSTEM-50 AMP
- 13X INVERTER/CHARGER 2.0 KW
- 265 CODES/STANDARDS-CSA/CMVSS
- 1B1 CODES/STANDARDS USA

<b>WINNEBAGO</b>		COPYRIGHT 2004 WINNEBAGO INDUSTRIES, INC.	
DFT	ORIG. DATE	ALL DIMENSIONS ARE IN MILLIMETERS	
CHKR		FIRST USED <b>06 P39K</b>	
P.E.			
M.E.		UNSPECIFIED TOLERANCES ARE: HOLE DIM (X) : ONE-PLACE (X.X) : TWO-PLACE (X.XX) : ANGLE : THIRD ANGLE PROJECTION	
DSNR			
DO NOT SCALE DRAWING		TITLE: WIRING INSTL-BODY, 110V	
SHEET 1 OF 3		PART NO 154197	
REF :		1 12/2/2005	



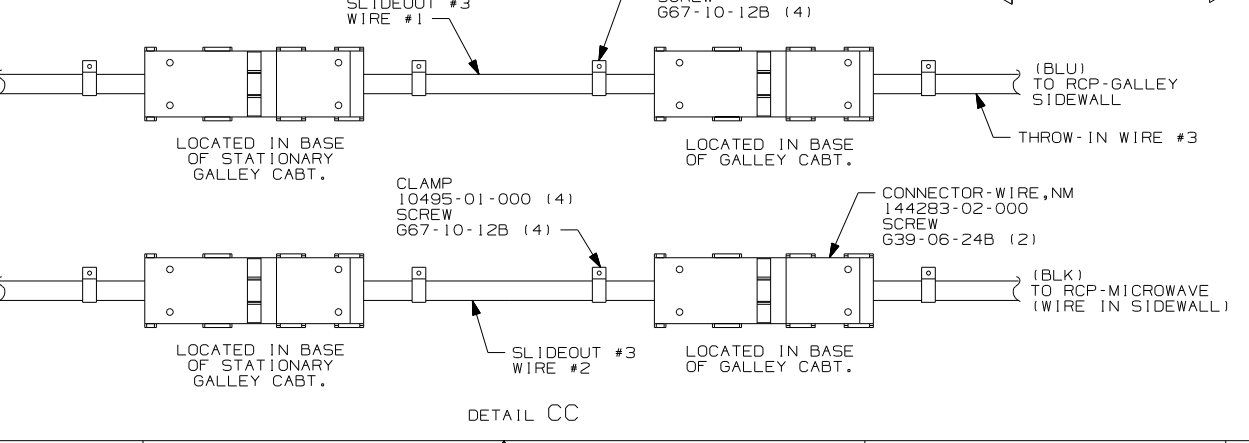
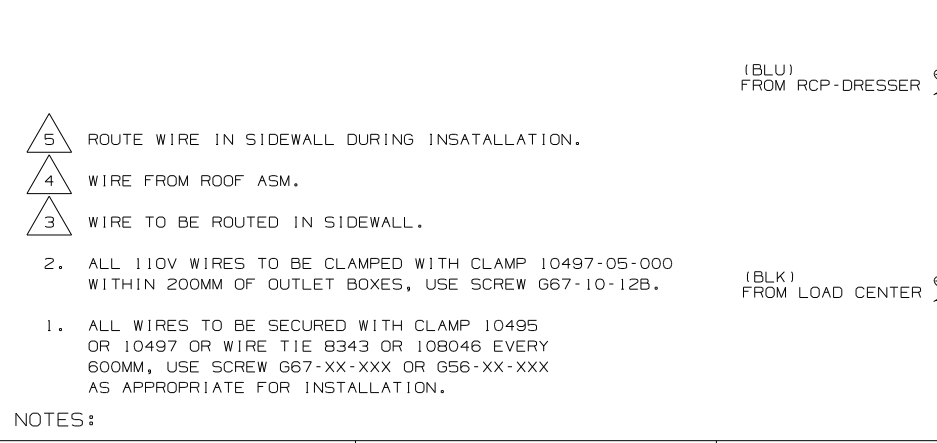
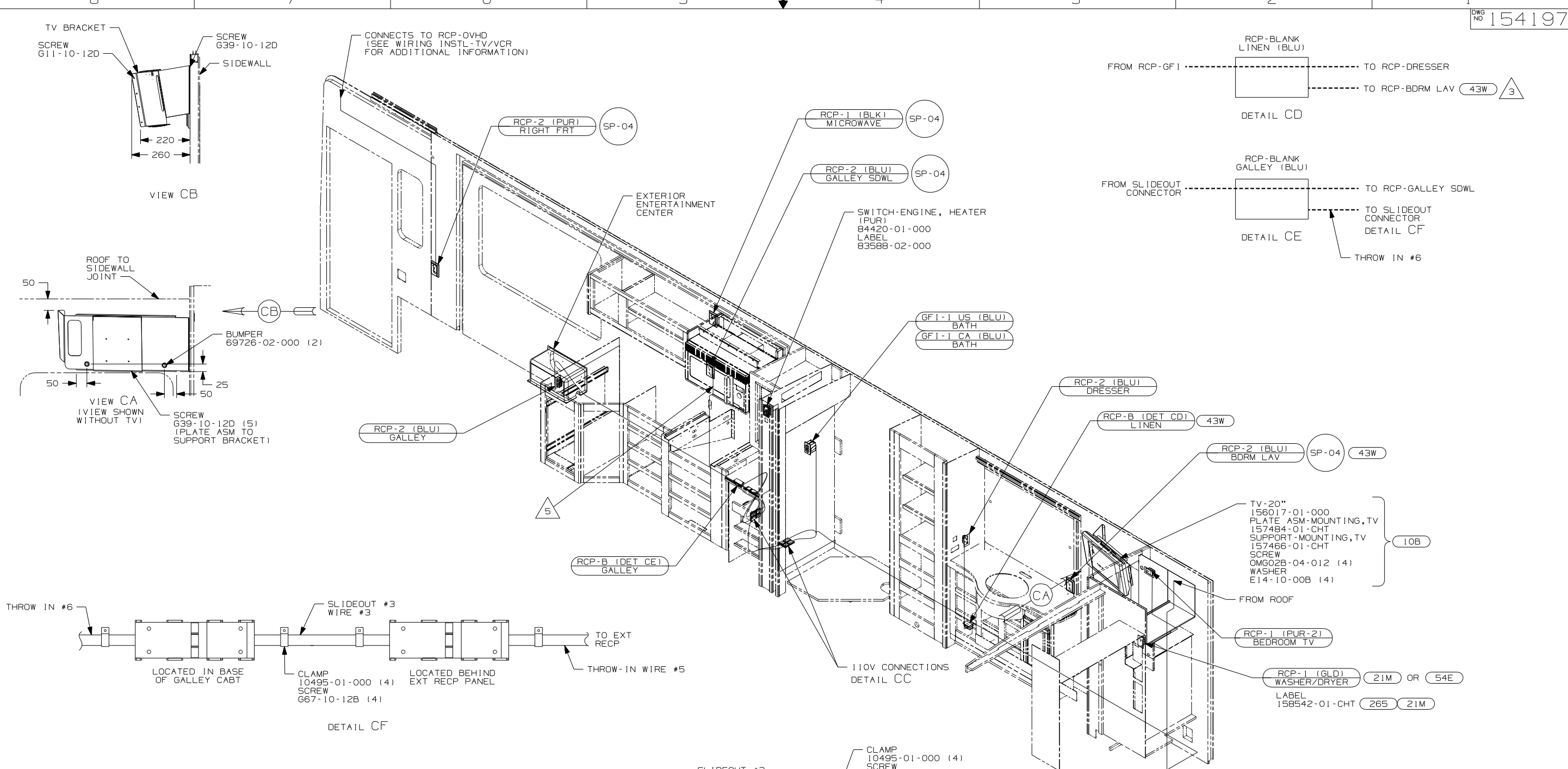
- 5 FOR MORE INFORMATION SEE LOAD CENTER/ATS ASM.
- FOR MORE INFORMATION SEE WIRING DIAGRAM-BODY,110V.
  - ALL 110V WIRE TO BE CLAMPED WITH CLAMP 10497-05-000 WITHIN 200MM OF OUTLET BOXES, USE SCREW G67-10-12B.
  - ALL WIRES TO BE SECURED WITH CLAMP 10495 OR 10497 OR WIRE TIE 8343 OR 108046 EVERY 600MM, USE SCREW G67-XX-XXX OR G56-XX-XXX AS APPROPRIATE FOR INSTALLATION.

NOTES:



- 13X INVERTER/CHARGER 2.0 KW
- 40D INVERTER-DC/AC,600 WATT
- 49M SLEEP NUMBER BED-QUEEN SIZE
- 265 CODES/STANDARDS-CSA/CMVSS
- 1B1 CODES/STANDARDS USA

FIRST USED	
06 P39K	
DO NOT SCALE DRAWING	
TITLE:	
WIRING INSTL-BODY,110V	
SHEET 2	PART NO
	154197



- NOTES:
- 5. ROUTE WIRE IN SIDEWALL DURING INSATALLATION.
  - 4. WIRE FROM ROOF ASM.
  - 3. WIRE TO BE ROUTED IN SIDEWALL.
  - 2. ALL 110V WIRES TO BE CLAMPED WITH CLAMP 10497-05-000 WITHIN 200MM OF OUTLET BOXES, USE SCREW 667-10-12B.
  - 1. ALL WIRES TO BE SECURED WITH CLAMP 10495 OR 10497 OR WIRE TIE 8343 OR 108046 EVERY 600MM, USE SCREW 667-XX-XXX OR 656-XX-XXX AS APPROPRIATE FOR INSTALLATION.

(54E)	WASHER/DRYER
(43W)	CABINET-LAVATORY
(10B)	TV-LCD(REAR)EXCHANGE
(21M)	WASHER/DRYER PREP
(265)	CODES/STANDARDS-CSA/CMVSS
(1B1)	CODES/STANDARDS USA
(1B1)	(265)
FIRST USED	
06 P39K	
DO NOT SCALE DRAWING	
TITLE: WIRING INSTL-BODY, 110V	
SHEET 3	PART NO 154197