



DANGER

Danger of electrical shock, burns or death. Always remove all power sources before attempting any repair, service or diagnostic work. Power can be present from shore power, generator, inverter or battery. All power sources must be disabled and secured before performing any service.

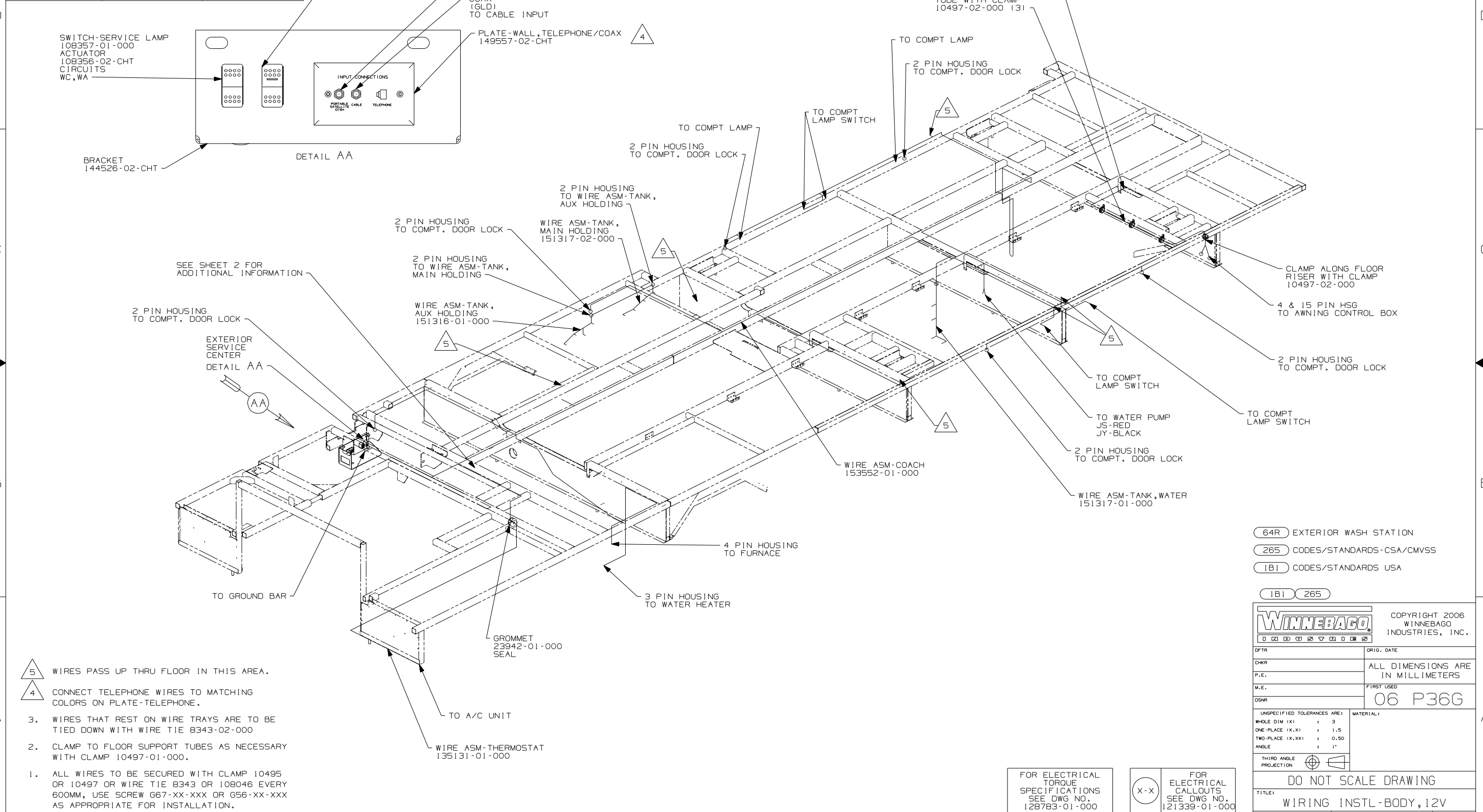


CAUTION

If you lack the skills, tools or equipment to perform diagnostic or repair work leave such work to an authorized Winnebago Industries dealer or other qualified shop.

| DRAWING NO. | MODEL | FEATURE |
|-------------|-------|---------|
| 153549-01 | 36G | (WIN) |
| 153549-02 | 36G | (ITA) |
| 153549-03 | 36SG | (WIN) |
| 153549-04 | 36SG | (ITA) |

| | | |
|----------|-----------------|---------------|
| RELEASE | REV DATE | DWG NO |
| | A | 153549 |
| REV ZONE | REVISION RECORD | DATE DFR-ORIG |
| | | |



- 5 WIRES PASS THRU FLOOR IN THIS AREA.
- 4 CONNECT TELEPHONE WIRES TO MATCHING COLORS ON PLATE-TELEPHONE.
3. WIRES THAT REST ON WIRE TRAYS ARE TO BE TIED DOWN WITH WIRE TIE 8343-02-000
2. CLAMP TO FLOOR SUPPORT TUBES AS NECESSARY WITH CLAMP 10497-01-000.
1. ALL WIRES TO BE SECURED WITH CLAMP 10495 OR 10497 OR WIRE TIE 8343 OR 108046 EVERY 600MM, USE SCREW G67-XX-XXX OR G56-XX-XXX AS APPROPRIATE FOR INSTALLATION.

- (64R) EXTERIOR WASH STATION
 - (265) CODES/STANDARDS-CSA/CMVSS
 - (1B1) CODES/STANDARDS USA
- (1B1) (265)

WINNEBAGO COPYRIGHT 2006 WINNEBAGO INDUSTRIES, INC.

| | |
|------|-----------------------------------|
| DFTR | ORIG. DATE |
| CHKR | ALL DIMENSIONS ARE IN MILLIMETERS |
| P.E. | |
| M.E. | FIRST USED |
| DSNR | 06 P36G |

| | |
|-----------------------------|-----------|
| UNSPECIFIED TOLERANCES ARE: | MATERIAL: |
| WHOLE DIM (X) : 3 | |
| ONE-PLACE (X.X) : 1.5 | |
| TWO-PLACE (X.XX) : 0.50 | |
| ANGLE : 1° | |

THIRD ANGLE PROJECTION

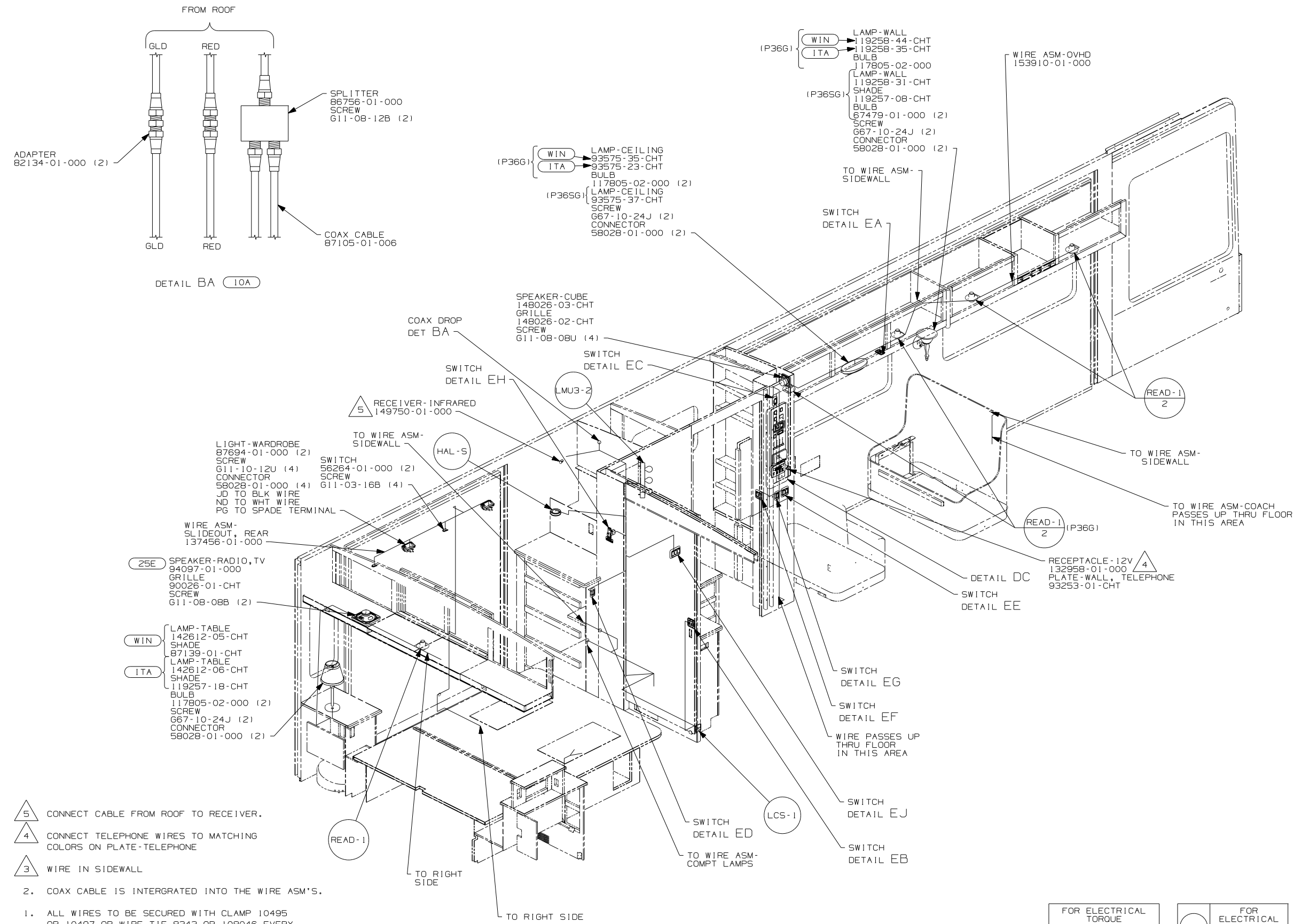
DO NOT SCALE DRAWING

TITLE: WIRING INSTL-BODY, 12V

SHEET 1 OF 7 PART NO 153549 REV

FOR ELECTRICAL TORQUE SPECIFICATIONS SEE DWG NO. 128783-01-000

(X-X) FOR ELECTRICAL CALLOUTS SEE DWG NO. 121339-01-000



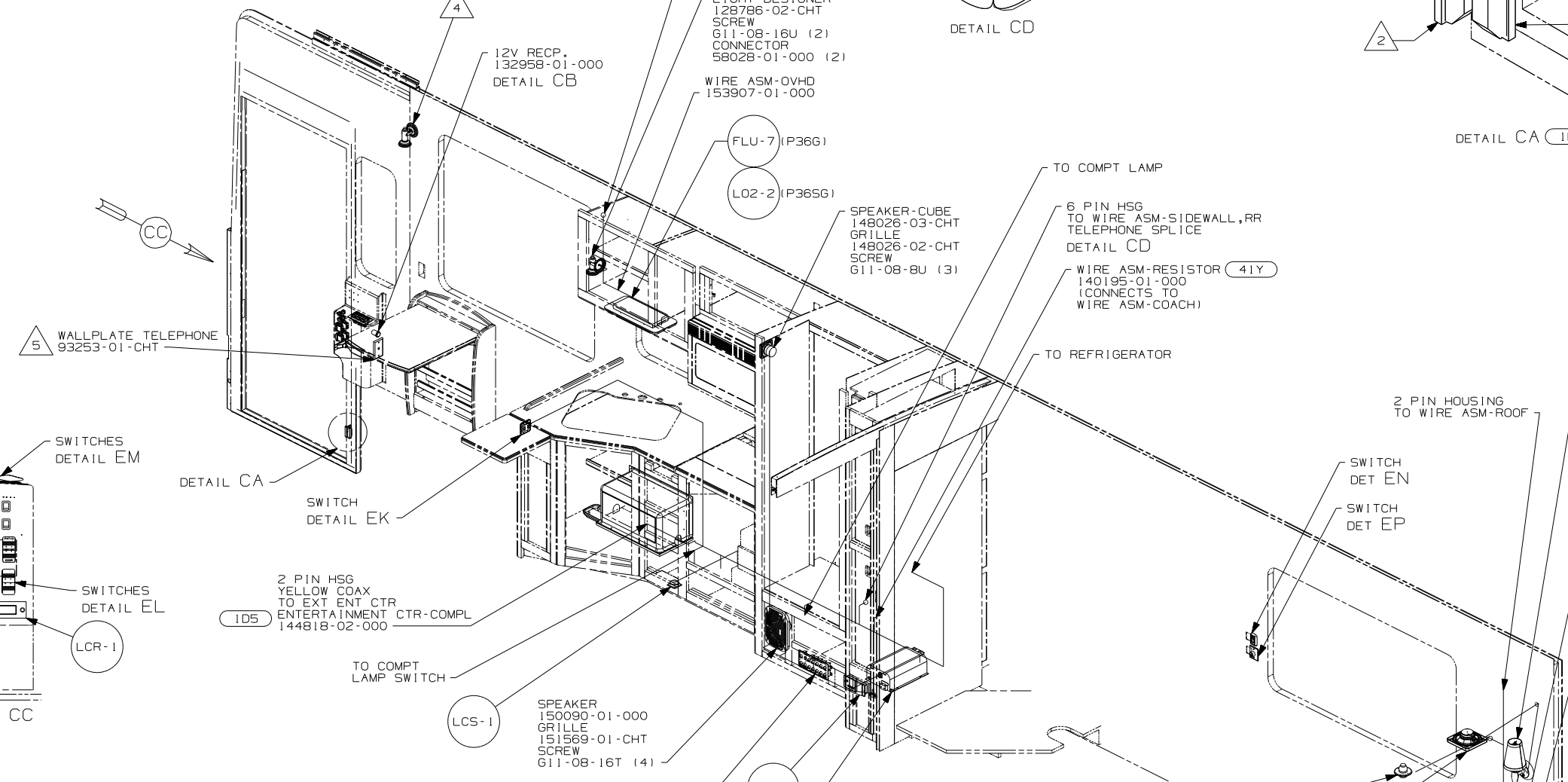
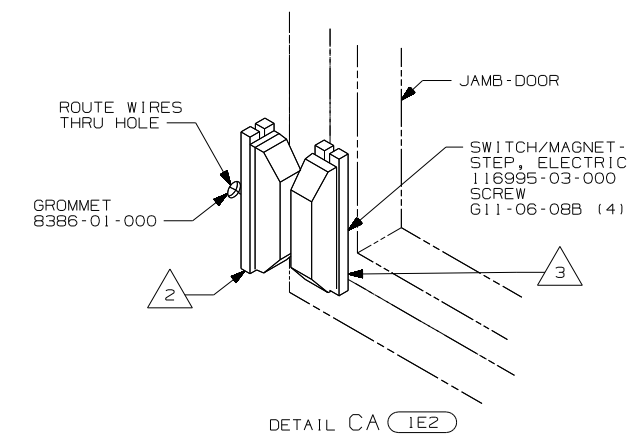
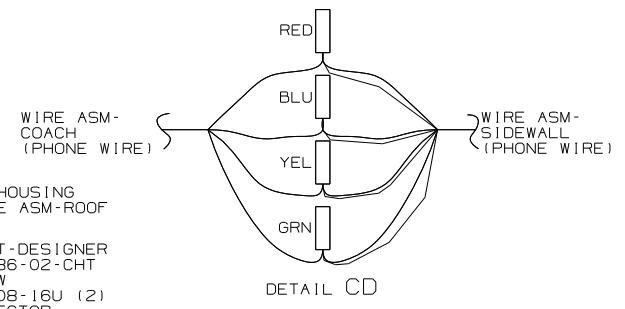
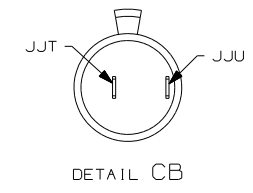
- NOTES:
1. ALL WIRES TO BE SECURED WITH CLAMP 10495 OR 10497 OR WIRE TIE 8343 OR 108046 EVERY 600MM, USE SCREW G67-XX-XXX OR G56-XX-XXX AS APPROPRIATE FOR INSTALLATION.
 2. COAX CABLE IS INTERGRATED INTO THE WIRE ASM'S.
- △ 5 CONNECT CABLE FROM ROOF TO RECEIVER.
 △ 4 CONNECT TELEPHONE WIRES TO MATCHING COLORS ON PLATE-TELEPHONE
 △ 3 WIRE IN SIDEWALL

- 10A TV (REAR) - 20" COLOR, STEREO
- ITA ITASCA ONLY
- WIN WINNEBAGO ONLY
- 265 CODES/STANDARDS-CSA/CMVSS
- 1B1 CODES/STANDARDS USA

FOR ELECTRICAL TORQUE SPECIFICATIONS SEE DWG NO. 128783-01-000

X-X FOR ELECTRICAL CALLOUTS SEE DWG NO. 121339-01-000

| | | |
|------------|------------------------|-----|
| FIRST USED | 06 P36G | |
| TITLE | DO NOT SCALE DRAWING | |
| | WIRING INSTL-BODY, 12V | |
| SHEET 2 | PART NO | REV |
| | 153549 | |



- LAMP-WALL 119258-45-CHT SHADE 119257-16-CHT BULB 117805-02-000 (2) (WIN) (P36G)
- LAMP-WALL 119258-37-CHT SHADE 119257-18-CHT BULB 67479-01-000 (2) (ITA) (P36G)
- LAMP-WALL 119258-31-CHT SHADE 119257-08-CHT BULB 67479-01-000 (2) (P36SG)
- SCREW 667-10-24J (2)
- CONNECTOR 58028-01-000 (2)

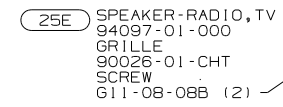
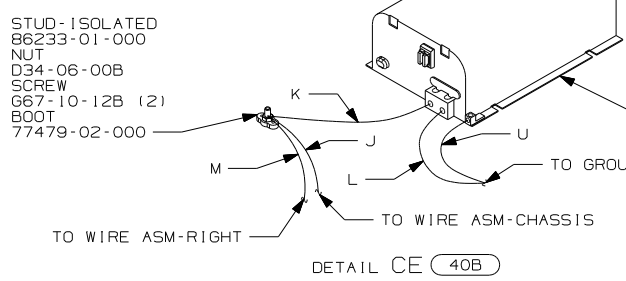
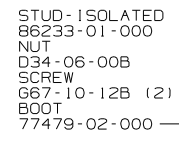
- RADIO-WALL MOUNT CD/W/ALARM 133307-02-000 SCREW 76790-03-000 (4) (25E)
- SPACER 133713-06-CHT SCREW 611-08-20D (4) (6)

- (41Y) FAN - CEILING
- (40B) INVERTER-DC/AC, 300 WATT
- (25E) STEREO SYSTEM W/CD REAR
- (13X) INVERTER/CHARGER 2.0 KW
- (ID5) ENTERTAINMENT CENTR/EXT W/CD
- (IE2) ENTRANCE STEP-ELECT.
- (ITA) ITASCA ONLY
- (WIN) WINNEBAGO ONLY
- (265) CODES/STANDARDS-CSA/CMVSS
- (1B1) CODES/STANDARDS USA

- 7 WITHOUT REAR STEREO LEAVE 12 PIN HOUSING HANG BEHIND NIGHT STAND DRAWERS.
- 6 WITHOUT (25E)
- 5 CONNECT TELEPHONE WIRES TO MATCHING COLORS ON PLATE-TELEPHONE.
- 4 SEE WIRING INSTL-FRONT END FOR ADDITIONAL INFORMATION.
- 3 MOUNT SWITCH AND SPACER TO BLOCK ON JAMB ADJUST HEIGHT TO MATCH MAGNET.
- 2 MOUNT MAGNET USING PILOT HOLES IN SCREEN DOOR FRAME. MOUNT WITH MAGNET TOWARD SWITCH.

1. ALL WIRES TO BE SECURED WITH CLAMP 10495 OR 10497 OR WIRE TIE 8343 OR 108046 EVERY 600MM, USE SCREW G67-XX-XXX OR G56-XX-XXX AS APPROPRIATE FOR INSTALLATION.

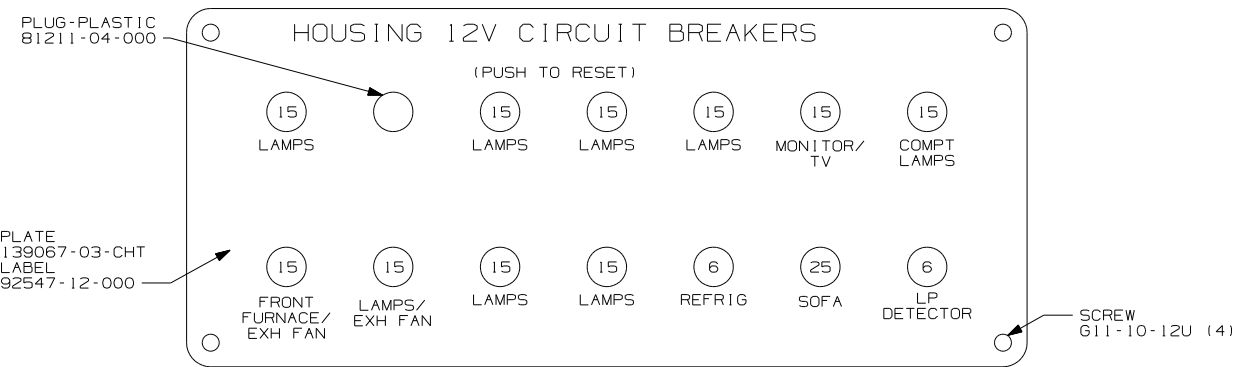
NOTES:



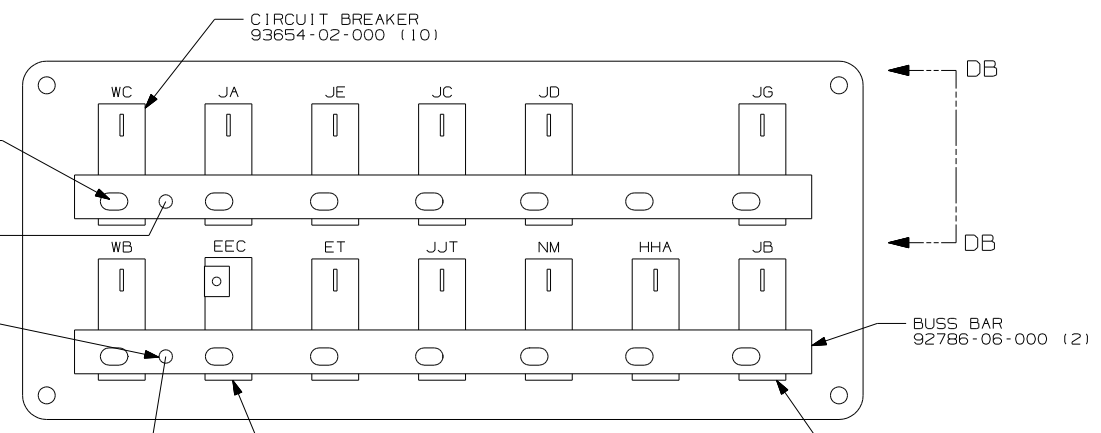
FOR ELECTRICAL TORQUE SPECIFICATIONS SEE DWG NO. 128783-01-000

FOR ELECTRICAL CALLOUTS SEE DWG NO. 121339-01-000

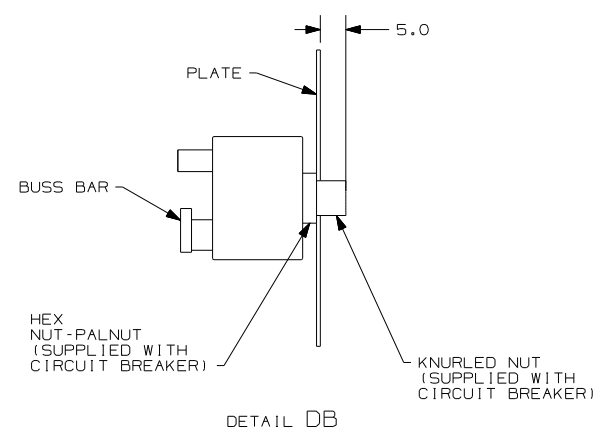
| | |
|----------------------|------------------------|
| FIRST USED | 06 P36G |
| DO NOT SCALE DRAWING | |
| TITLE: | WIRING INSTL-BODY, 12V |
| SHEET 3 | PART NO 153549 REV |



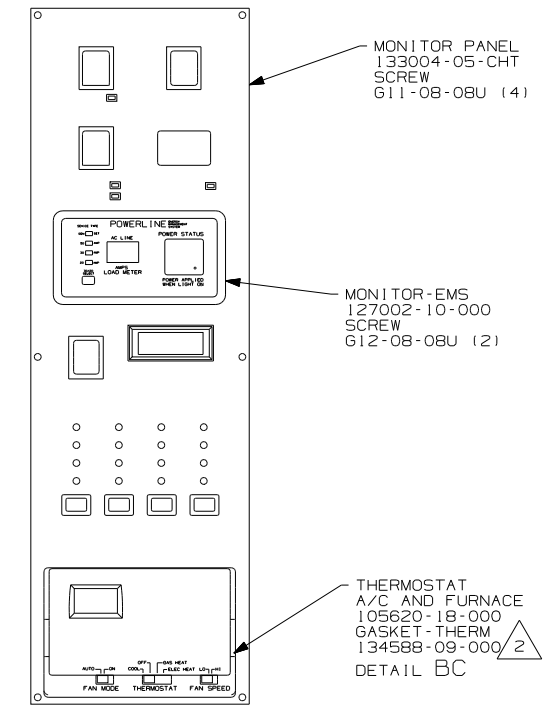
DETAIL DA
(FRONT VIEW)



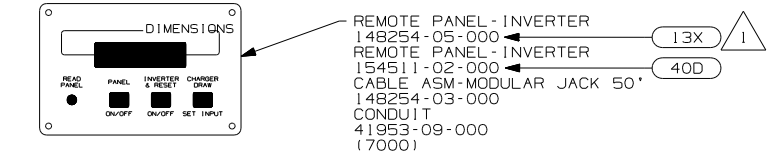
DETAIL DA
(BACK VIEW)



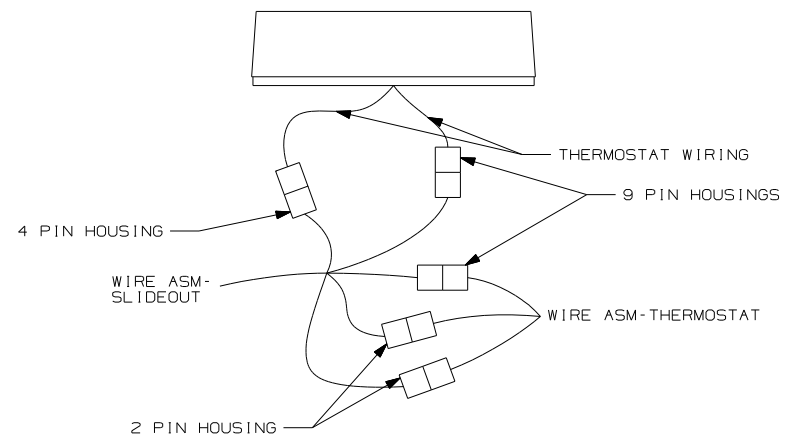
DETAIL DB



DETAIL DC



DETAIL DD



DETAIL DD

2 INSTALL GASKET ON BACK SIDE OF ONE PLACE AFTER INSTALLATION OF THERMOSTAT, MAKING SURE THAT THE GASKET COVERS AND SEALS THE HOLE THAT THE WIRES PASS THROUGH

1 CONNECT CIRCUIT WB FROM COACH WIRING TO RED WIRE ON REMOTE PANEL.

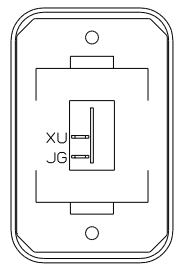
NOTES:

- 40D INVERTER-DC/AC,600 WATT
- 13X INVERTER/CHARGER 2.0 KW
- 265 CODES/STANDARDS-CSA/CMVSS
- 1B1 CODES/STANDARDS USA

| | |
|----------------------------------|--------------------|
| FIRST USED | |
| 06 P36G | |
| DO NOT SCALE DRAWING | |
| TITLE: WIRING INSTL-BODY, 12V | |
| SHEET 4 | PART NO 153549 REV |

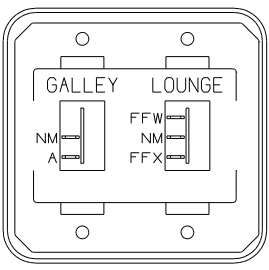
FOR ELECTRICAL TORQUE SPECIFICATIONS SEE DWG NO. 128783-01-000

X-X FOR ELECTRICAL CALLOUTS SEE DWG NO. 121339-01-000



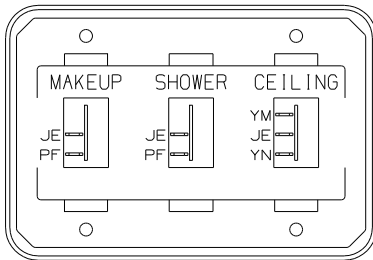
SWITCH-ROCKER
135740-01-CHT
SWITCH-BASE
135741-01-CHT
SWITCH-BEZEL
135742-01-CHT
SCREW
G11-08-08U (2)

DETAIL EA



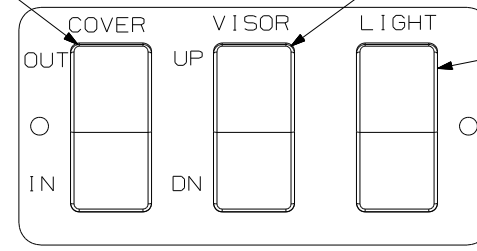
SWITCH-ROCKER
135740-01-CHT
135740-02-CHT
SWITCH-BASE
135741-02-CHT
SWITCH-BEZEL
135742-18-CHT
SCREW
G11-08-08U (4)

DETAIL EE



SWITCH-ROCKER (2)
135740-01-CHT
135740-02-CHT
SWITCH-BASE
135741-03-CHT
SWITCH-BEZEL
135742-28-CHT
SCREW
G11-08-08U (4)

DETAIL EJ



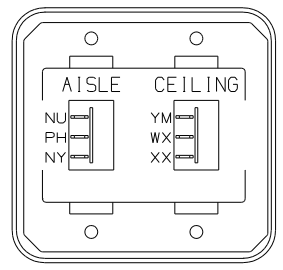
SWITCH-COVER
108357-06-000
ACTUATOR-SWITCH
108356-01-CHT
CIRCUITS
GX, HHC, KA, HHD

SWITCH-VISOR
108357-16-000
ACTUATOR-SWITCH
108356-01-CHT
CIRCUITS
HHM, HHN, MK,
PPK, PPJ
SWITCH-BLANK
96241-03-000

SWITCH-LAMPS
108357-01-000
ACTUATOR-SWITCH
108356-01-CHT

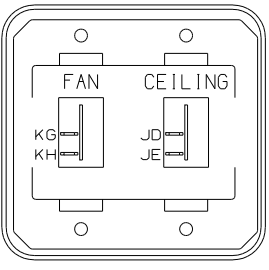
PLATE-SWITCH
142487-01-CHT
APPLIQUE
142475-01-CHT
SCREW
G11-06-10U (2)

DETAIL EM



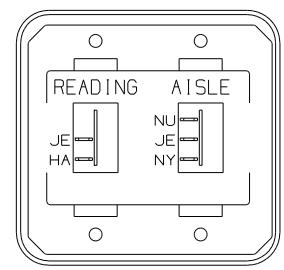
SWITCH-ROCKER
135740-02-CHT (2)
SWITCH-BASE
135741-02-CHT
SWITCH-BEZEL
135742-13-CHT
SCREW
G11-08-08U (4)

DETAIL EB



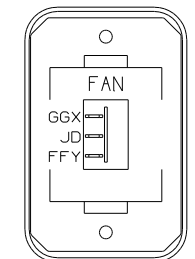
SWITCH-ROCKER
135740-01-CHT (2)
SWITCH-BASE
135741-02-CHT
SWITCH-BEZEL
135742-33-CHT
SCREW
G11-08-08U (4)

DETAIL EF



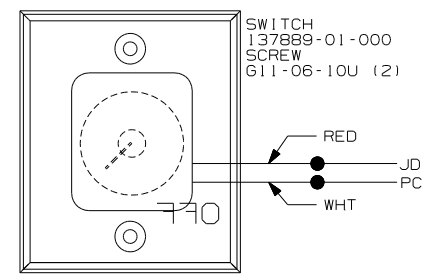
SWITCH-ROCKER
135740-01-CHT
135740-02-CHT
SWITCH-BASE
135741-02-CHT
SWITCH-BEZEL
135742-21-CHT
SCREW
G11-08-08U (4)

DETAIL EK



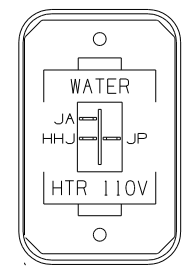
SWITCH-ROCKER
135740-04-CHT
SWITCH-BASE
135741-01-CHT
SWITCH-BEZEL
135742-12-CHT
SCREW
G11-08-08U (2)

DETAIL EN (41Y)



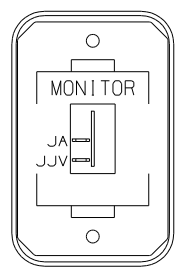
SWITCH
137889-01-000
SCREW
G11-06-10U (2)

DETAIL EP



SWITCH-ROCKER
135740-06-CHT
SWITCH-BASE
135741-01-CHT
SWITCH-BEZEL
135742-35-CHT
SCREW
G11-08-08U (2)

DETAIL EC



SWITCH-ROCKER
135740-01-CHT
SWITCH-BASE
135741-01-CHT
SWITCH-BEZEL
135742-30-CHT
SCREW
G11-08-08U (2)

DETAIL EG

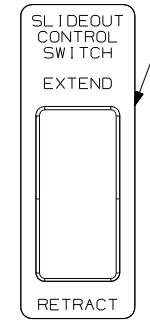
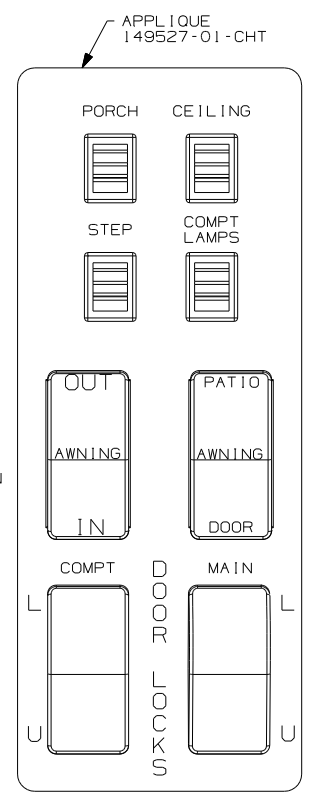


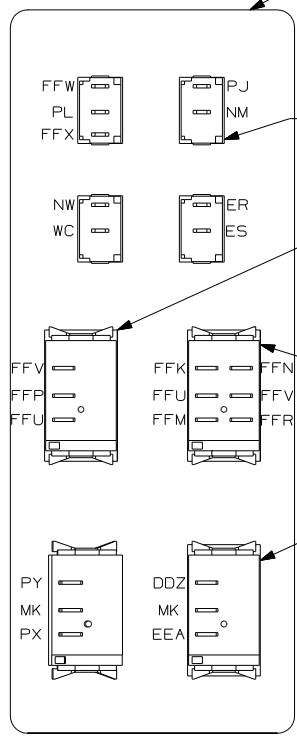
PLATE-SWITCH
144363-09-CHT
SWITCH
108357-06-000
ACTUATOR
108356-02-CHT
NUT
D65-08-00B (2)
LABEL
116220-02-000
DDA, CCY, DDA, BBM, CCZ, BBN

DETAIL EH

WARNING
UNDERSTAND OPERATOR'S MANUAL
BEFORE USING KEEP PEOPLE AND
OBSTRUCTIONS CLEAR OF SLIDEOUT
ROOM WHEN OPERATING TO AVOID
INJURY AND/OR PROPERTY DAMAGE



DETAIL EL (FRONT SIDE)



DETAIL EL (BACK SIDE)

PLATE-SWITCH, CONSOLE, RH
149521-01-CHT
SCREW
G11-06-10U (4)

SWITCH
132180-01-CHT (3)
132180-02-CHT

SWITCH-AWNING SELECT
108357-08-000
ACTUATOR
108356-13-CHT
SWITCH-BLANK
96241-03-000

SWITCH-AWNING CONTROL
108357-06-000
ACTUATOR
108356-12-CHT
SWITCH-BLANK
96241-03-000

SWITCH-DOOR LOCKS
108357-07-000 (2)
ACTUATOR
108356-01-CHT (2)

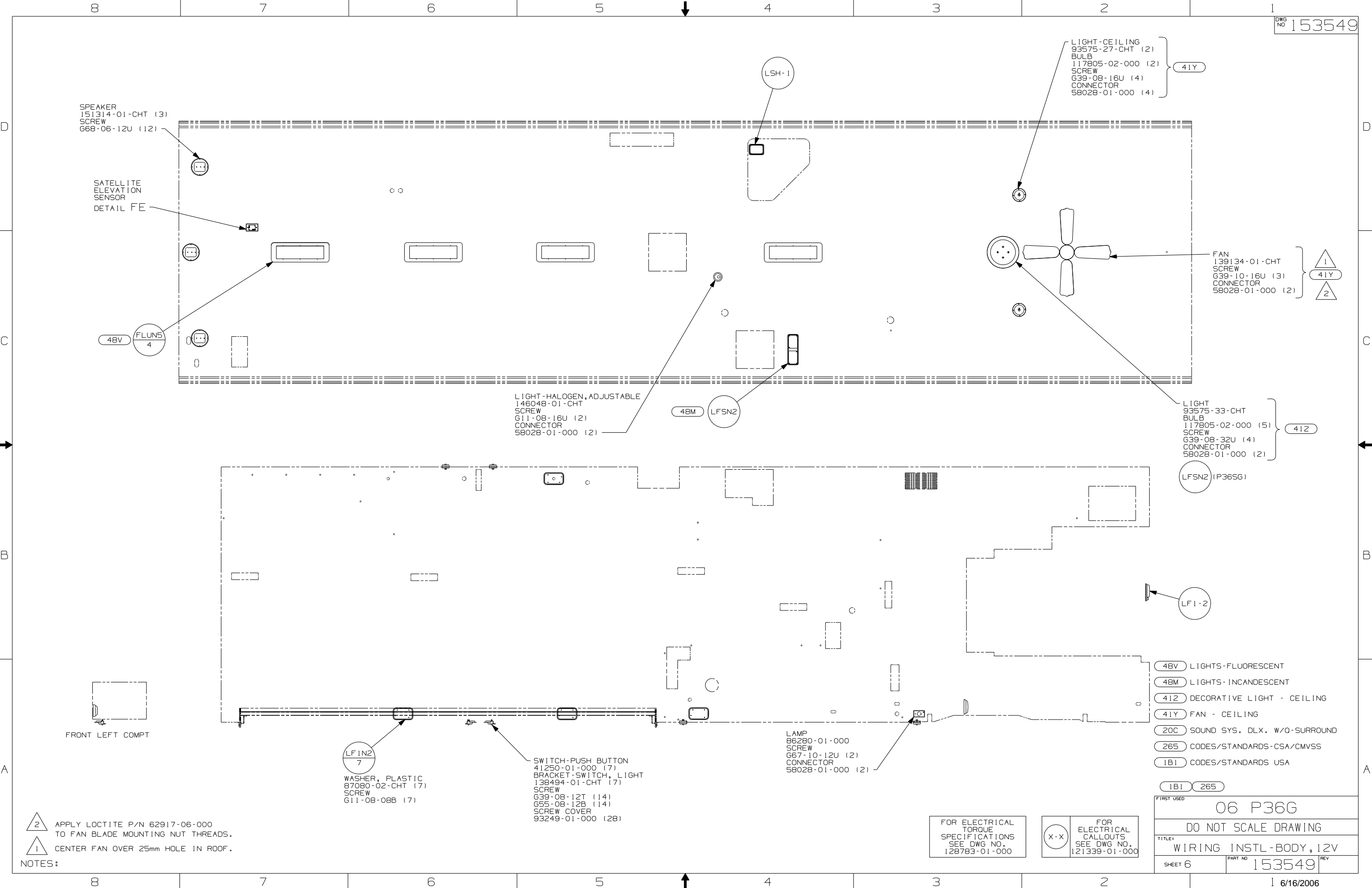
- (9C1) AWNING-ELECTRIC PACKAGE
- (41Y) FAN-CEILING
- (710) VENT ROOF-POWERED, INSULATED
- (28K) SUNVISORS - MANUAL (2)
- (28J) SUNVISORS - POWERED (2)
- (265) CODES/STANDARDS-CSA/CMVSS
- (1B1) CODES/STANDARDS-USA

| | |
|------------|------------------------|
| FIRST USED | 06 P36G |
| TITLE | DO NOT SCALE DRAWING |
| SHEET 5 | WIRING INSTL-BODY, 12V |
| PART NO | 153549 |
| REV | |

FOR ELECTRICAL
TORQUE
SPECIFICATIONS
SEE DWG NO.
128783-01-000

(X-X)
FOR ELECTRICAL
CALLOUTS
SEE DWG NO.
121339-01-000

WITHOUT (9C1)



SPEAKER
151314-01-CHT (3)
SCREW
668-06-12U (12)

SATELLITE
ELEVATION
SENSOR
DETAIL FE

48V FLUN5
4

LIGHT-HALOGEN, ADJUSTABLE
146048-01-CHT
SCREW
G11-08-16U (2)
CONNECTOR
58028-01-000 (2)

LIGHT-CEILING
93575-27-CHT (2)
BULB
117805-02-000 (2)
SCREW
G39-08-16U (4)
CONNECTOR
58028-01-000 (4)

FAN
139134-01-CHT
SCREW
G39-10-16U (3)
CONNECTOR
58028-01-000 (2)

LIGHT
93575-33-CHT
BULB
117805-02-000 (5)
SCREW
G39-08-32U (4)
CONNECTOR
58028-01-000 (2)

LAMP
86280-01-000
SCREW
G67-10-12U (2)
CONNECTOR
58028-01-000 (2)

WASHER, PLASTIC
87080-02-CHT (7)
SCREW
G11-08-08B (7)

SWITCH-PUSH BUTTON
41250-01-000 (7)
BRACKET-SWITCH, LIGHT
138494-01-CHT (7)
SCREW
G39-08-12T (14)
G55-08-12B (14)
SCREW COVER
93249-01-000 (28)

- 48V LIGHTS-FLUORESCENT
- 48M LIGHTS-INCANDESCENT
- 41Z DECORATIVE LIGHT - CEILING
- 41Y FAN - CEILING
- 20C SOUND SYS. DLX. W/O-SURROUND
- 265 CODES/STANDARDS-CSA/CMVSS
- 1B1 CODES/STANDARDS USA

NOTES:
2 APPLY LOCTITE P/N 62917-06-000 TO FAN BLADE MOUNTING NUT THREADS.
1 CENTER FAN OVER 25mm HOLE IN ROOF.

FOR ELECTRICAL TORQUE SPECIFICATIONS SEE DWG NO. 128783-01-000

FOR ELECTRICAL CALLOUTS SEE DWG NO. 121339-01-000

| | |
|-------------|------------------------|
| FIRST USED | 06 P36G |
| TITLE | DO NOT SCALE DRAWING |
| TITLE | WIRING INSTL-BODY, 12V |
| SHEET 6 | PART NO 153549 REV |
| 1 6/16/2006 | |

