



DANGER

Danger of electrical shock, burns or death. Always remove all power sources before attempting any repair, service or diagnostic work. Power can be present from shore power, generator, inverter or battery. All power sources must be disabled and secured before performing any service.

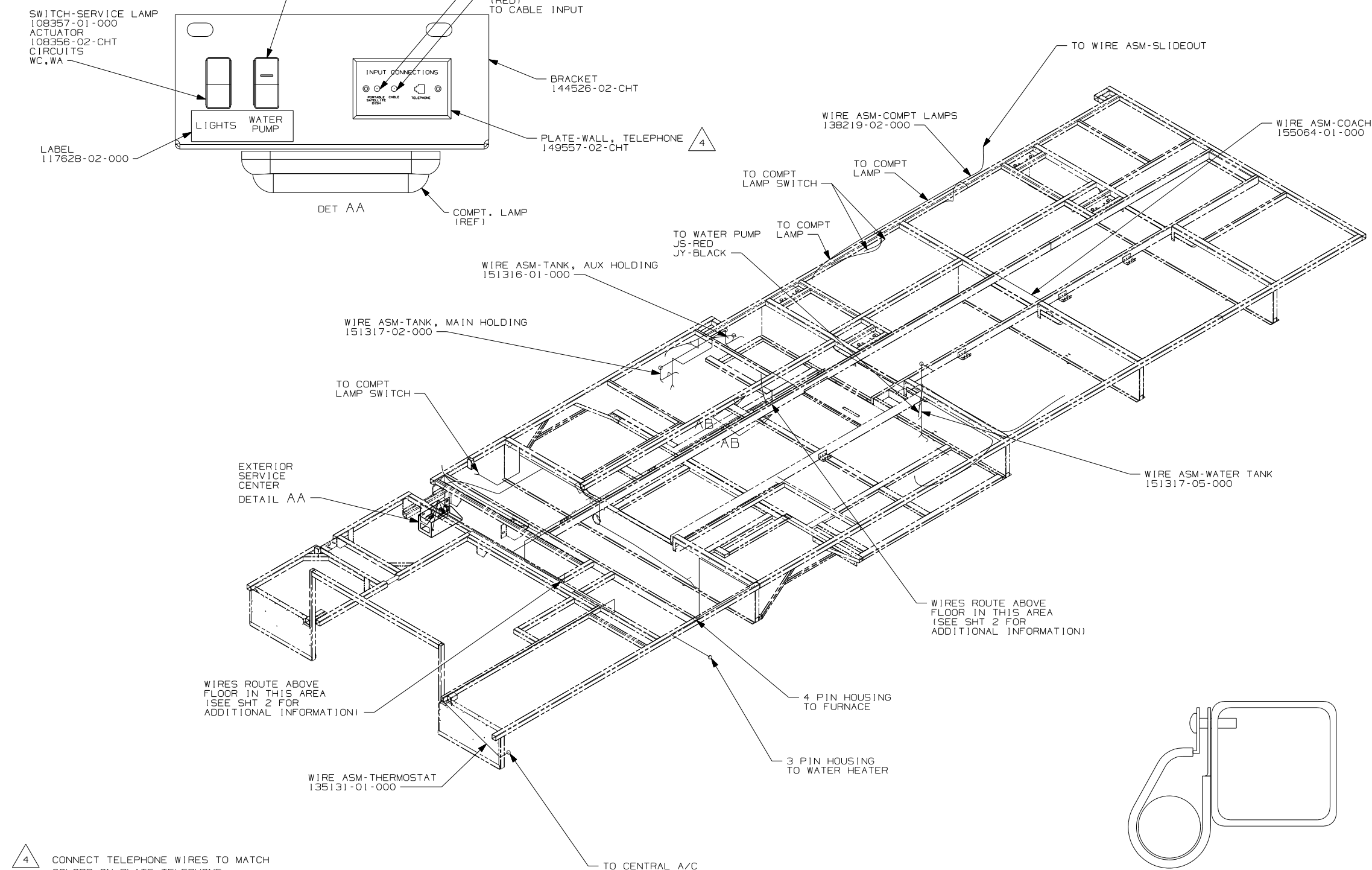


CAUTION

If you lack the skills, tools or equipment to perform diagnostic or repair work leave such work to an authorized Winnebago Industries dealer or other qualified shop.

| | |
|-------------|-------|
| DRAWING NO. | ----- |
| 155061-01 | WIN |
| 155061-02 | ITA |

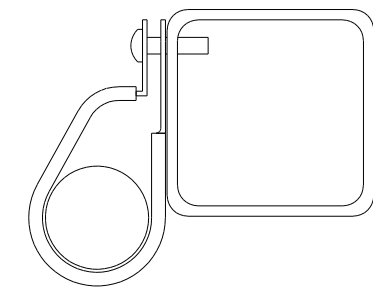
| | | |
|----------|-----------------|----------|
| RELEASE | REV/DATE | DWG NO |
| | A | 155061 |
| REV ZONE | REVISION RECORD | DATE |
| | | DFT-0R16 |



- 4 CONNECT TELEPHONE WIRES TO MATCH COLORS ON PLATE-TELEPHONE.
- WIRES THAT REST ON WIRE TRAYS ARE TO BE TIED DOWN WITH WIRE TIE 8343-02-000.
 - CLAMP TO FLOOR SUPPORT TUBES AS NECESSARY WITH CLAMP 10497-01-000.
 - ALL WIRES TO BE SECURED WITH CLAMP 10495 OR 10497 OR WIRE TIE 8343 OR 108046 EVERY 600MM, USE SCREW G67-XX-XXX OR G56-XX-XXX AS APPROPRIATE FOR INTALLATION.

NOTES:

- 64R EXTERIOR WASH STATION
- 1B1 CODES/STANDARDS USA
- 265 CODES /STANDARDS-CSA/CMVSS

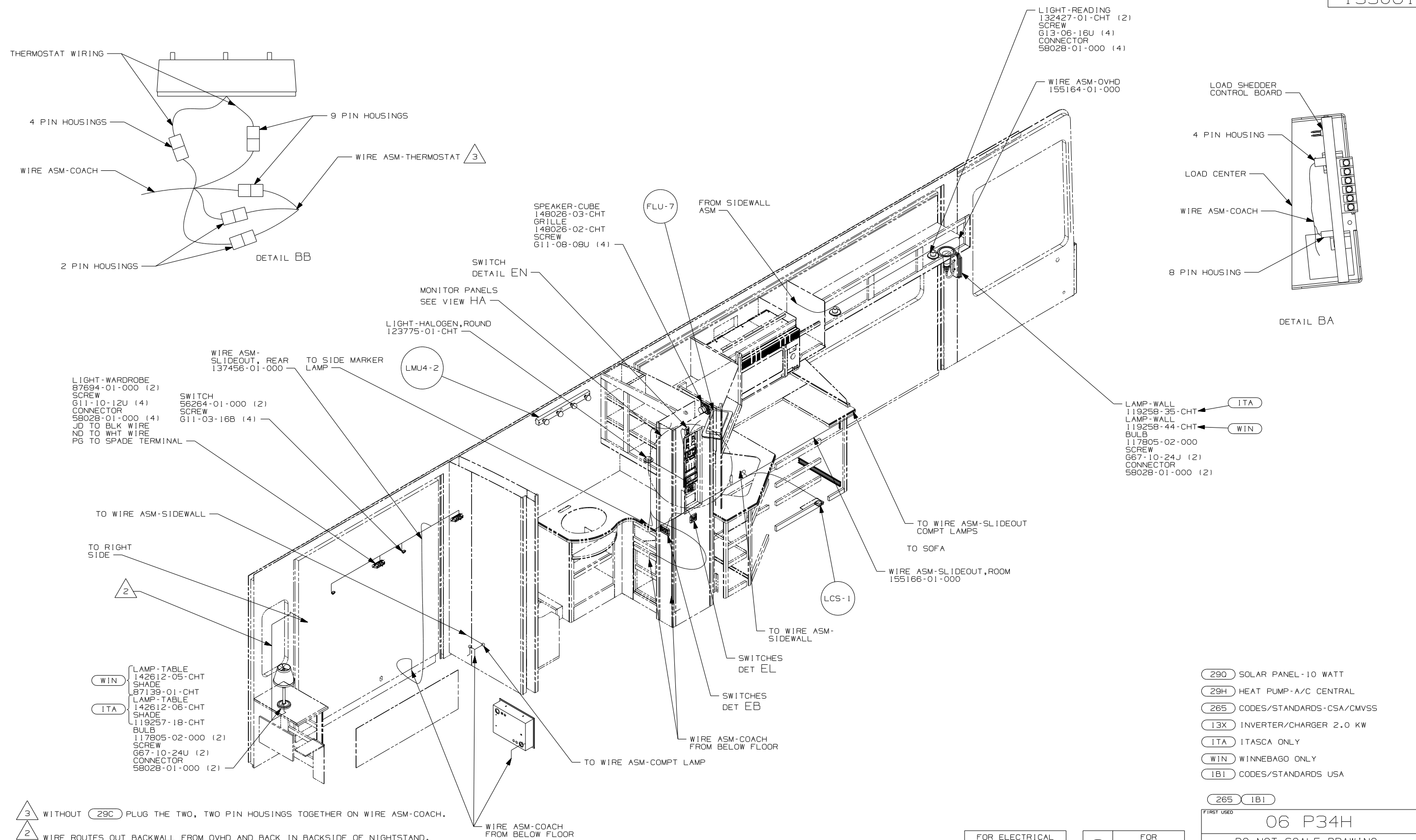


VIEW AB-AB

FOR ELECTRICAL TORQUE SPECIFICATIONS SEE DWG NO. 128783-01-000

FOR ELECTRICAL CALLOUTS SEE DWG NO. 121339-01-000

| | | |
|-------------------------------|-----------------------------------|---|
| | | COPYRIGHT 2006 WINNEBAGO INDUSTRIES, INC. |
| DFT | ORIG. DATE | |
| CHKR | ALL DIMENSIONS ARE IN MILLIMETERS | |
| P.E. | | |
| M.E. | FIRST USED | 06 P34H |
| DSNR | | |
| UNSPECIFIED TOLERANCES ARE: | MATERIAL: | |
| WHOLE DIM (X) | : | |
| ONE-PLACE (X.X) | : | |
| TWO-PLACE (X.XX) | : | |
| ANGLE | : | |
| THIRD ANGLE PROJECTION | | |
| DO NOT SCALE DRAWING | | |
| TITLE: WIRING INSTL-BODY, 12V | | |
| SHEET 1 OF 8 | PART NO | 155061 |
| REF: | 1 6/16/2006 | |



3 WITHOUT (29C) PLUG THE TWO, TWO PIN HOUSINGS TOGETHER ON WIRE ASM-COACH.

2 WIRE ROUTES OUT BACKWALL FROM OVHD AND BACK IN BACKSIDE OF NIGHTSTAND.

1. ALL WIRES TO BE SECURED WITH CLAMP 10495 OR 10497 OR WIRE TIE 8343 OR 108046 EVERY 600MM, USE SCREW G67-XX-XXX OR G56-XX-XXX AS APPROPRIATE FOR INTALLATION.

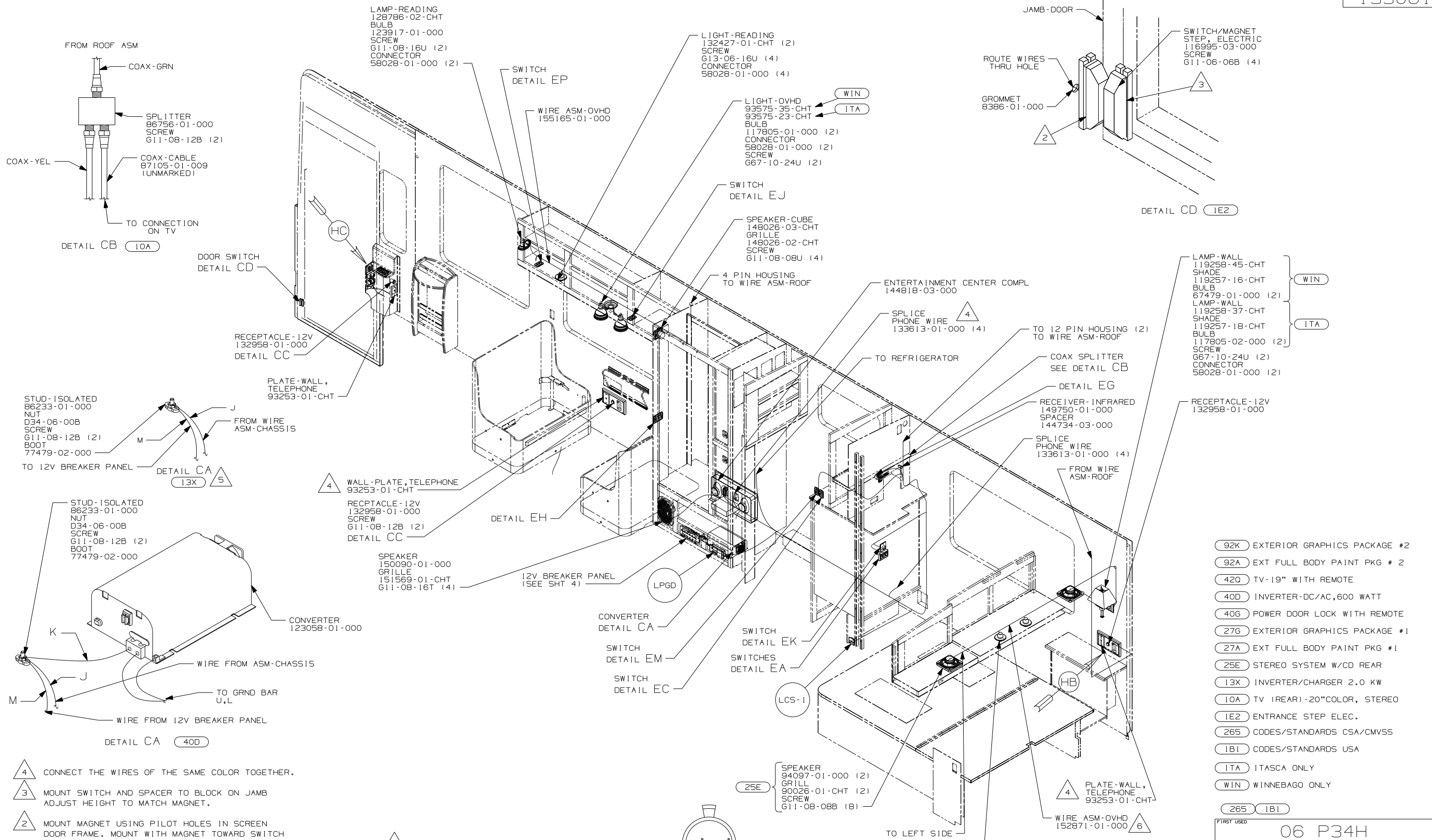
NOTES:

- (29Q) SOLAR PANEL-10 WATT
- (29H) HEAT PUMP-A/C CENTRAL
- (265) CODES/STANDARDS-CSA/CMVSS
- (13X) INVERTER/CHARGER 2.0 KW
- (ITA) ITASCA ONLY
- (WIN) WINNEBAGO ONLY
- (1B1) CODES/STANDARDS USA

| | |
|-------------------------------|----------------|
| FIRST USED | |
| 06 P34H | |
| DO NOT SCALE DRAWING | |
| TITLE: WIRING INSTL-BODY, 12V | |
| SHEET 2 | PART NO 155061 |

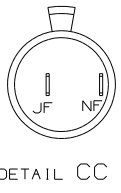
FOR ELECTRICAL TORQUE SPECIFICATIONS SEE DWG NO. 128783-01-000

(X-X) FOR ELECTRICAL CALLOUTS SEE DWG NO. 121339-01-000



- NOTES:
- ALL WIRES TO BE SECURED WITH CLAMP 10495 OR 10497 OR WIRE TIE 8343 OR 108046 EVERY 600MM, USE SCREW G67-XX-XXX OR G56-XX-XXX AS APPROPRIATE FOR INTALLATION.
- △ 4 CONNECT THE WIRES OF THE SAME COLOR TOGETHER.
 - △ 3 MOUNT SWITCH AND SPACER TO BLOCK ON JAMB ADJUST HEIGHT TO MATCH MAGNET.
 - △ 2 MOUNT MAGNET USING PILOT HOLES IN SCREEN DOOR FRAME. MOUNT WITH MAGNET TOWARD SWITCH
 - △ 6 WITHOUT REAR STEREO LEAVE 12 PIN HOUSING HANG BEHIND NIGHTSTAND DRAWERS.
 - △ 5 REMOVE CIRCUIT K FROM LOOM AND CONNECT L & U TOGETHER WITH CONNECTOR 8312-01-000.

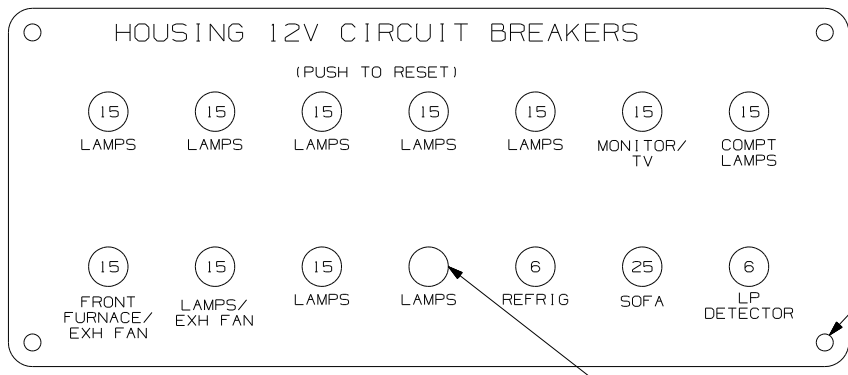
- (92K) EXTERIOR GRAPHICS PACKAGE #2
- (92A) EXT FULL BODY PAINT PKG # 2
- (420) TV-19" WITH REMOTE
- (40D) INVERTER-DC/AC,600 WATT
- (40G) POWER DOOR LOCK WITH REMOTE
- (27G) EXTERIOR GRAPHICS PACKAGE #1
- (27A) EXT FULL BODY PAINT PKG #1
- (25E) STEREO SYSTEM W/CD REAR
- (13X) INVERTER/CHARGER 2.0 KW
- (10A) TV (REAR) -20"COLOR, STEREO
- (IE2) ENTRANCE STEP ELEC.
- (265) CODES/STANDARDS CSA/CMVSS
- (IB1) CODES/STANDARDS USA
- (ITA) ITASCA ONLY
- (WIN) WINNEBAGO ONLY



FOR ELECTRICAL TORQUE SPECIFICATIONS SEE DWG NO. 128783-01-000

FOR ELECTRICAL CALLOUTS SEE DWG NO. 121339-01-000

| | |
|-------------------------------|--------------------|
| FIRST USED | |
| 06 P34H | |
| DO NOT SCALE DRAWING | |
| TITLE: WIRING INSTL-BODY, 12V | |
| SHEET 3 | PART NO 155061 REV |

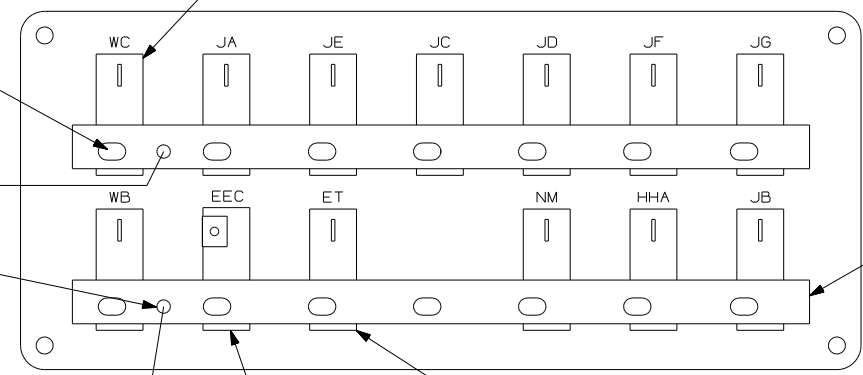


CIRCUIT BREAKER (FRONT VIEW)

PLATE 139067-03-CHT LABEL 92547-12-000

SCREW 611-10-12U (4)

PLUG-PLASTIC, BLACK 81211-04-000



CIRCUIT BREAKER (BACK VIEW)

CIRCUIT BREAKER 93654-02-000 (10)

SCREW 652-06-04B (14)

FROM WIRE ASM-CCOACH 6 BLK

SCREW 639-08-06B (2)

FROM WIRE ASM-CHASSIS 6 BLK

DA

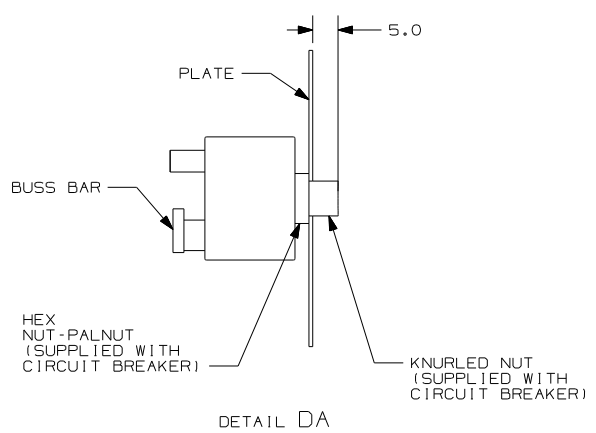
DA

BUSS BAR 92786-06-000 (2)

CIRCUIT BREAKER 93655-01-000 (25 AMP)

SCREW 652-06-04B WASHER OME02B

CIRCUIT BREAKER 93654-01-000 (2)



DETAIL DA

265 CODES/STANDARDS CSA/CVSS

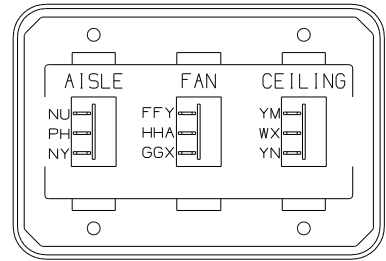
1B1 CODES/STANDARDS USA

1B1 265

| | |
|------------|------------------------|
| FIRST USED | 06 P34H |
| TITLE | DO NOT SCALE DRAWING |
| | WIRING INSTL-BODY, 12V |
| SHEET 4 | PART NO 155061 REV |

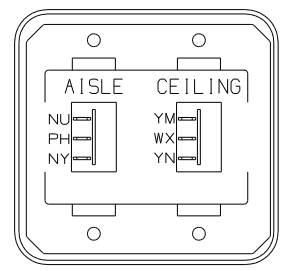
FOR ELECTRICAL TORQUE SPECIFICATIONS SEE DWG NO. 128783-01-000

(X-X) FOR ELECTRICAL CALLOUTS SEE DWG NO. 121339-01-000



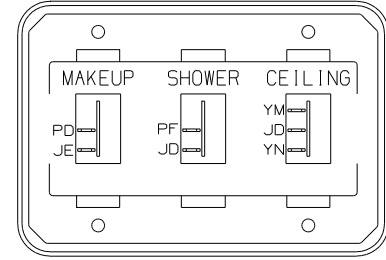
SWITCH-ROCKER 135740-02-CHT (2)
 135740-04-CHT
 SWITCH-BASE 135741-03-CHT
 SWITCH-BEZEL 135742-23-CHT
 SCREW G11-08-08U (4)
 WIRE ASM-RESISTOR,FAN 140195-01-000

DETAIL EA 41Y



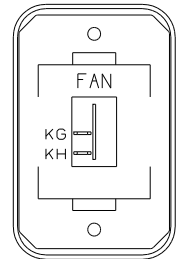
SWITCH-ROCKER 135740-02-CHT (2)
 SWITCH-BASE 135741-02-CHT
 SWITCH-BEZEL 135742-13-CHT
 SCREW G11-08-08U (4)

DETAIL EA 41Z



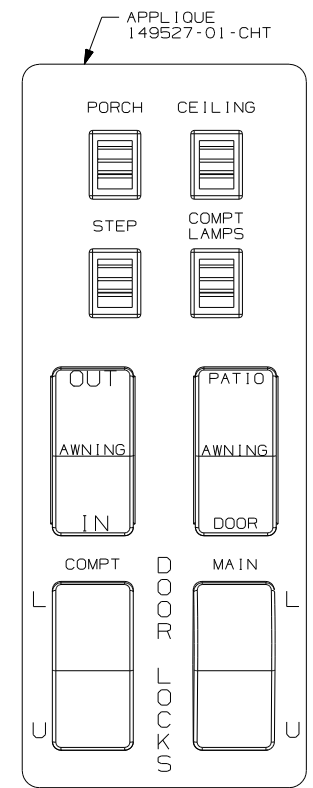
SWITCH-ROCKER 135740-01-CHT (2)
 135740-02-CHT
 SWITCH-BASE 135741-03-CHT
 SWITCH-BEZEL 135742-28-CHT
 SCREW G11-08-08U (4)

DETAIL EB

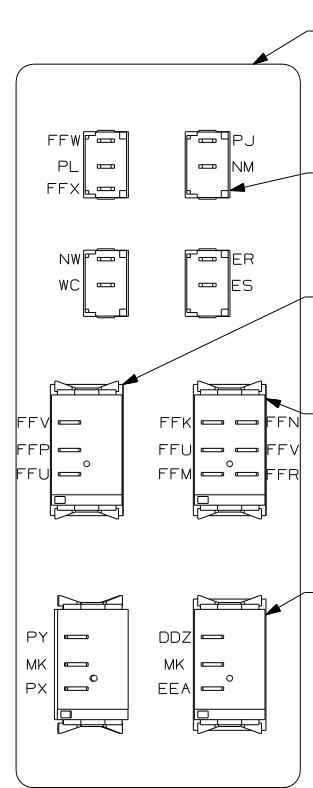


SWITCH-ROCKER 135740-01-CHT
 SWITCH-BASE 135741-01-CHT
 SWITCH-BEZEL 135742-12-CHT
 SCREW G11-08-08U (2)

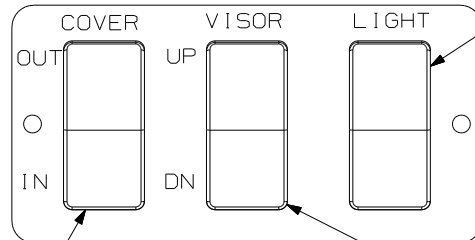
DETAIL EC



DETAIL EE (FRONT SIDE)



DETAIL EE (BACK SIDE)

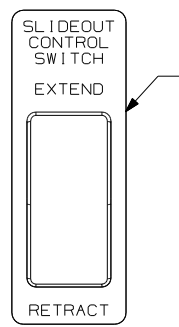


DETAIL EF

SWITCH-LAMPS 108357-01-000
 ACTUATOR-SWITCH 108356-01-CHT
 CIRCUITS NM,HA,O

PLATE-SWITCH 142487-01-CHT
 APPLIQUE 142475-01-CHT
 SCREW G11-06-10U (2)

SWITCH-COVER 108357-06-000
 ACTUATOR-SWITCH 108356-01-CHT
 CIRCUITS GX,HHC,KA,HHD



DETAIL EG

SWITCH-VISOR 108357-16-000
 ACTUATOR-SWITCH 108356-01-CHT
 CIRCUITS HHN,MK,HHM,MN
 SWITCH-BLANK 96241-03-000

PLATE-SWITCH 144363-09-CHT
 SWITCH 108357-06-000
 ACTUATOR 108356-02-CHT
 NUT D65-08-00B (2)
 LABEL 116220-01-000
 DDA,CCY,DDA,BBM,CCZ,BBN

LABEL-WARNING 116549-02-000

WARNING
 UNDERSTAND OPERATOR'S MANUAL BEFORE USING KEEP PEOPLE AND OBSTRUCTIONS CLEAR OF SLIDEOUT ROOM WHEN OPERATING TO AVOID INJURY AND/OR PROPERTY DAMAGE

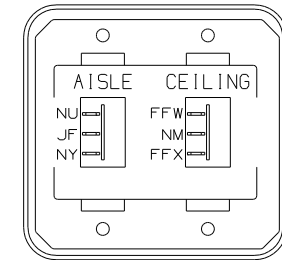
PLATE-SWITCH, CONSOLE, RH 149521-01-CHT
 SCREW G11-06-10U (4)

SWITCH 132180-01-CHT (3)
 132180-02-CHT

SWITCH-AWNING SELECT 108357-08-000
 ACTUATOR 108356-13-CHT
 SWITCH-BLANK 96241-03-000

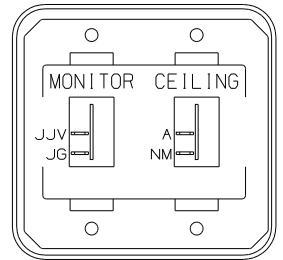
SWITCH-AWNING CONTROL 108357-06-000
 ACTUATOR 108356-12-CHT
 SWITCH-BLANK 96241-03-000

SWITCH-DOOR LOCKS 108357-07-000 (2)
 ACTUATOR 108356-01-CHT (2)



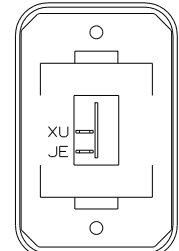
DETAIL EH

SWITCH-ROCKER 135740-01-CHT (2)
 SWITCH-BASE 135741-02-CHT
 SWITCH-BEZEL 135742-31-CHT
 SCREW G11-08-08U (4)



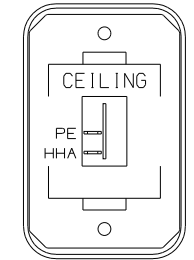
DETAIL EL

SWITCH-ROCKER 135740-01-CHT (2)
 SWITCH-BASE 135741-02-CHT
 SWITCH-BEZEL 135742-31-CHT
 SCREW G11-08-08U (4)



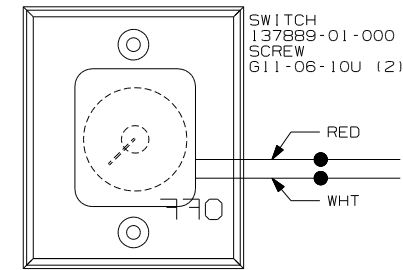
DETAIL EJ

SWITCH-ROCKER 135740-01-CHT
 SWITCH-BASE 135741-01-CHT
 SWITCH-BEZEL 135742-01-CHT
 SCREW G11-08-08U (2)



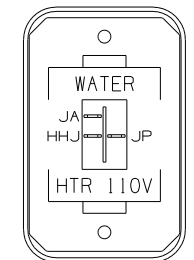
DETAIL EM WIN

SWITCH-ROCKER 135740-01-CHT
 SWITCH-BASE 135741-01-CHT
 SWITCH-BEZEL 135742-07-CHT
 SCREW G11-08-08U (2)



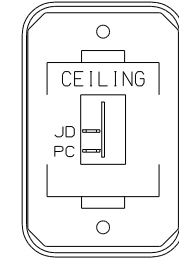
DETAIL EK ITA

SWITCH 137889-01-000
 SCREW G11-06-10U (2)



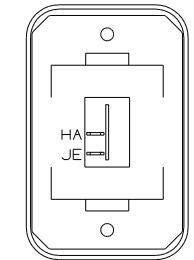
DETAIL EN

SWITCH-ROCKER 135740-06-CHT
 SWITCH-BASE 135741-01-CHT
 SWITCH-BEZEL 135742-35-CHT
 SCREW G11-08-08U (2)



DETAIL EK WIN

SWITCH-ROCKER 135740-01-CHT
 SWITCH-BASE 135741-01-CHT
 SWITCH-BEZEL 135742-07-CHT
 SCREW G11-08-08U (2)



DETAIL EP

SWITCH-ROCKER 135740-01-CHT
 SWITCH-BASE 135741-01-CHT
 SWITCH-BEZEL 135742-01-CHT
 SCREW G11-08-08U (2)

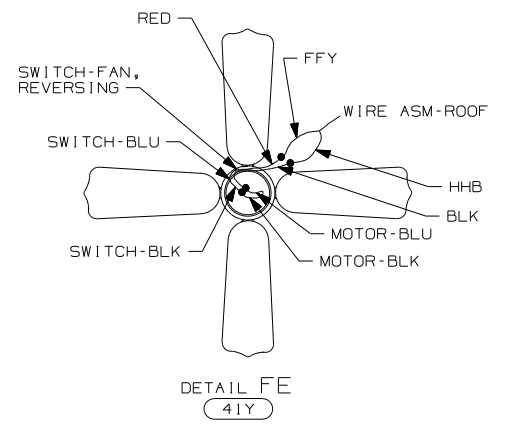
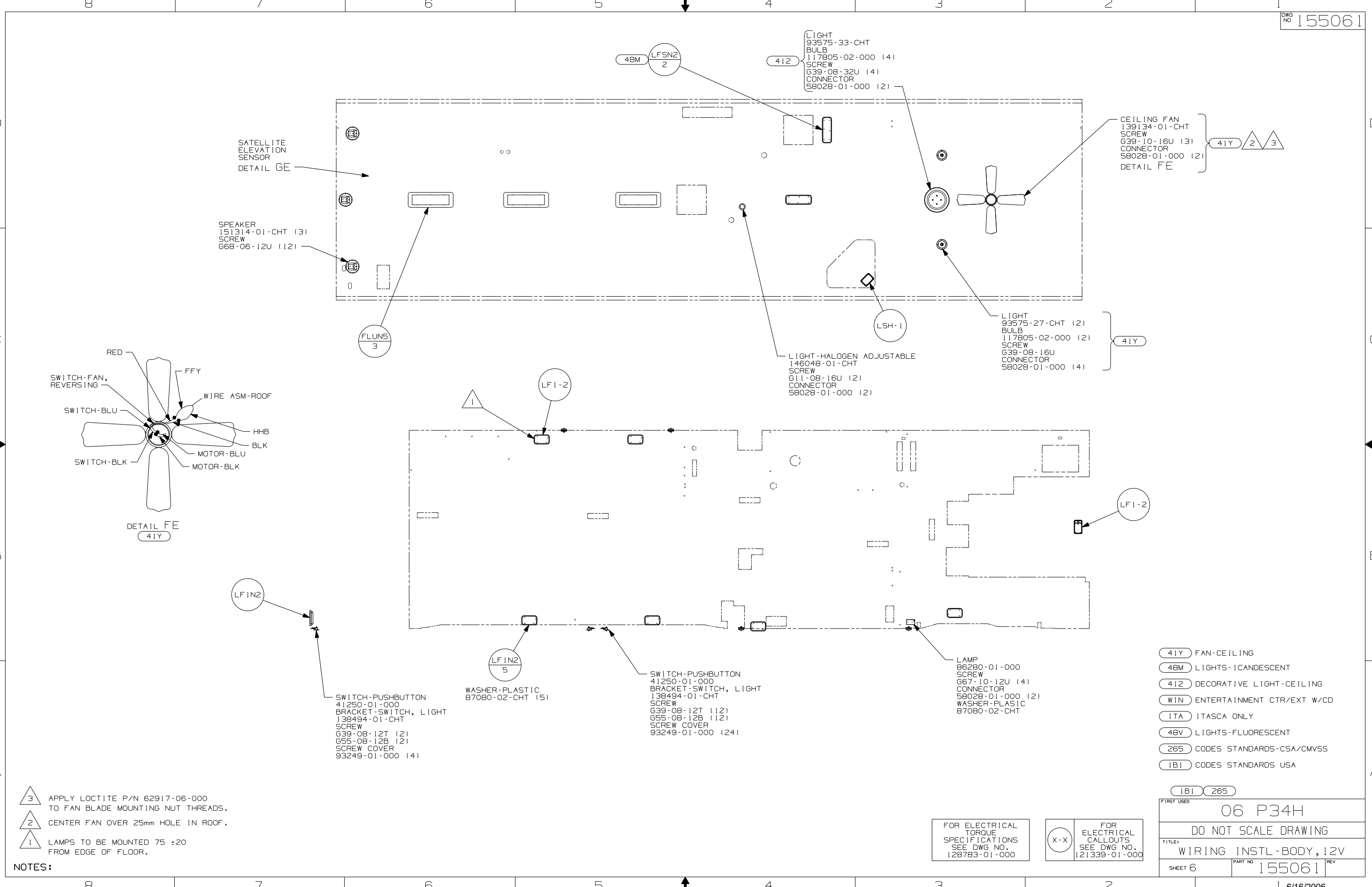
- (ITA) ITASCA ONLY
- (WIN) WINNEBAGO ONLY
- (28K) SUNVISORS - MANUAL (2)
- (28J) SUNVISORS - POWERED (2)
- (9C1) AWNING-ELECTRIC PACKAGE

NOTES:
 2 WITHOUT 9C1
 1 CONNECT WIRE ASM RESISTOR TO 2-PIN HOUSING LOCATED BY SWITCH WIRES.

FOR ELECTRICAL TORQUE SPECIFICATIONS SEE DWG NO. 128783-01-000

FOR ELECTRICAL CALLOUTS SEE DWG NO. 121339-01-000

| | | | |
|-------------------------------|---------|---------|-----|
| FIRST USED | | 06 P34H | |
| DO NOT SCALE DRAWING | | | |
| TITLE: WIRING INSTL-BODY, 12V | | | |
| SHEET 5 | PART NO | 155061 | REV |



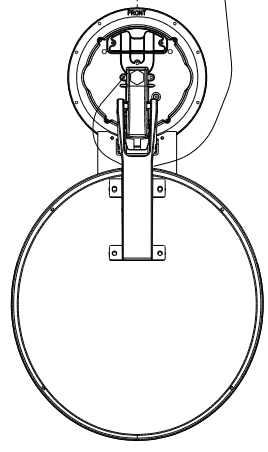
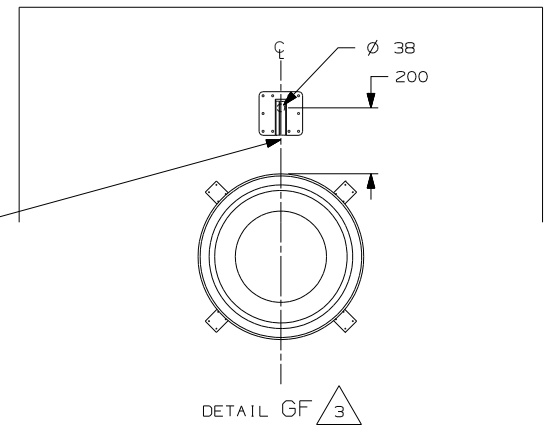
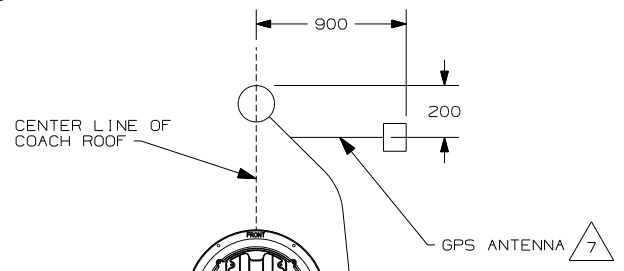
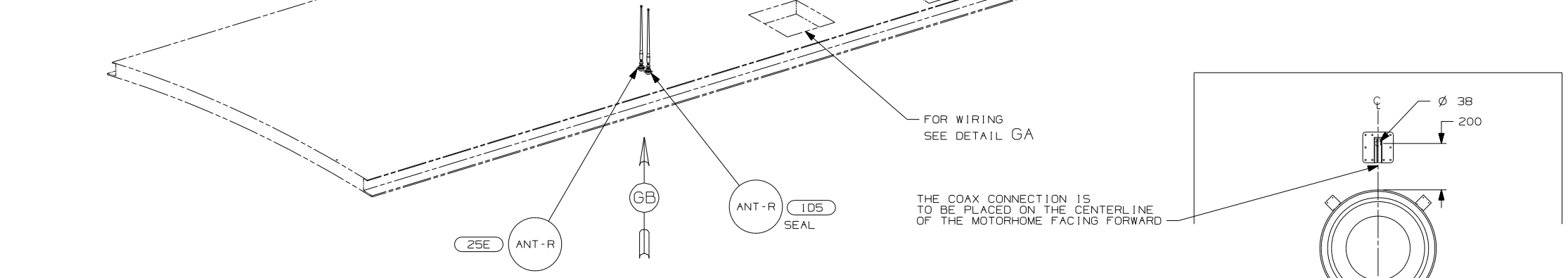
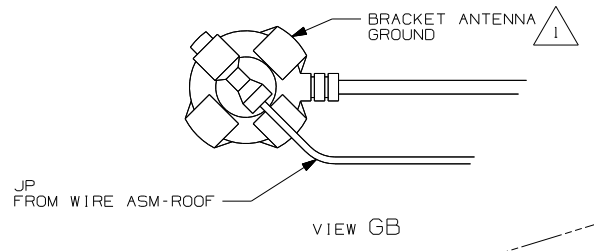
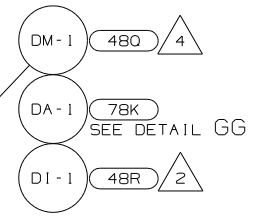
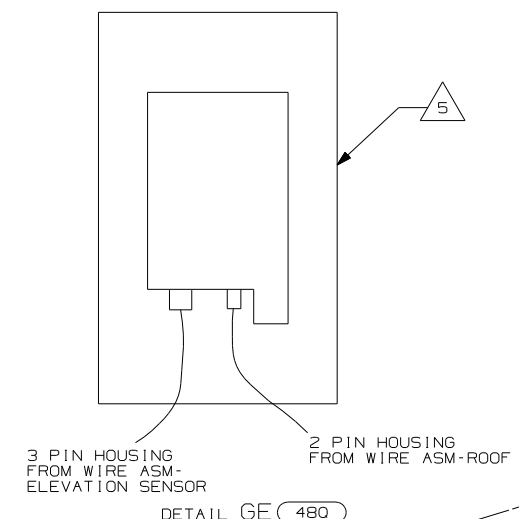
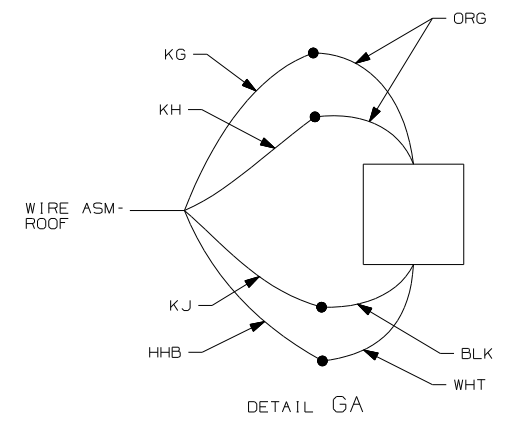
- NOTES:
- 3 APPLY LOCTITE P/N 62917-06-000 TO FAN BLADE MOUNTING NUT THREADS.
 - 2 CENTER FAN OVER 25mm HOLE IN ROOF.
 - 1 LAMPS TO BE MOUNTED 75 ±20 FROM EDGE OF FLOOR.

- 41Y FAN-CEILING
- 48M LIGHTS-ICANDESCENT
- 412 DECORATIVE LIGHT-CEILING
- WIN ENTERTAINMENT CTR/EXT W/CD
- ITA ITASCA ONLY
- 48V LIGHTS-FLUORESCENT
- 265 CODES STANDARDS-CSA/CMVSS
- 1B1 CODES STANDARDS USA

FOR ELECTRICAL TORQUE SPECIFICATIONS SEE DWG NO. 128783-01-000

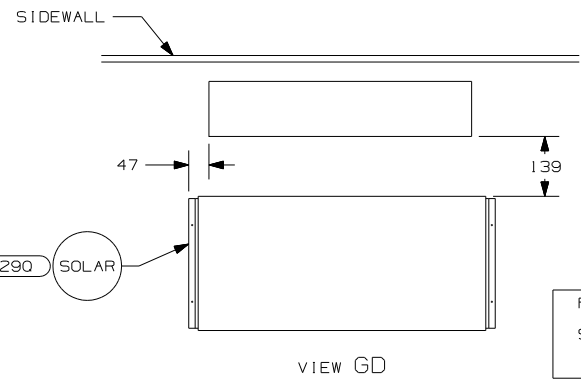
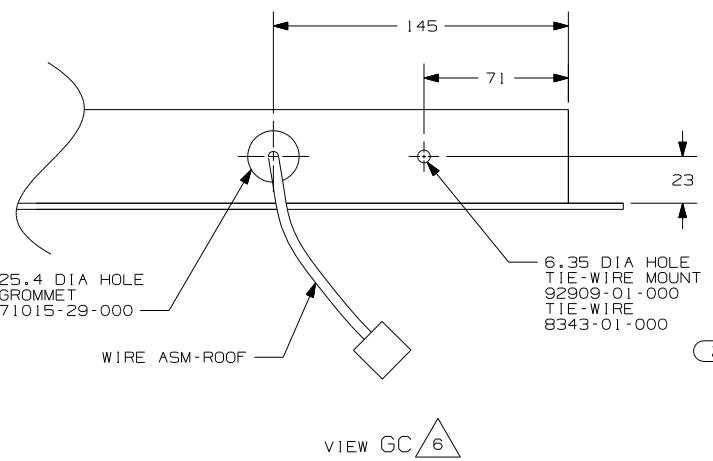
FOR ELECTRICAL CALLOUTS SEE DWG NO. 121339-01-000

| | |
|----------------------|------------------------|
| FIRST USED | 06 P34H |
| DO NOT SCALE DRAWING | |
| TITLE: | WIRING INSTL-BODY, 12V |
| SHEET 6 | PART NO 155061 REV |



DETAIL GG

- NOTES:
- 7 MOUNT GPS ANTENNA TO THE RIGHT OF THE SATELLITE AS SHOWN. SECURE CABLE WITH ROOF SEALANT.
 - 6 FASTEN TO VENT.
 - 5 SENSOR SUPPLIED WITH SATELLITE ASSEMBLY.
 - 4 SEE DETAIL GE FOR ELEVATION SENSOR ASSEMBLY.
 - 3 REMOVE ALL SHIPPING RESTRAINTS AND FIRMLY INSERT THE SUPPLIED PLUGS INTO THE APPROPRIATE SIZED HOLES AS SPECIFIED IN THE INSTALLATION PROCESS.
 - 2 SEE DETAIL GF FOR SATELLITE LOCATION.
 - 1 WRAP BRACKET LEGS AROUND ANTENNA BASE.

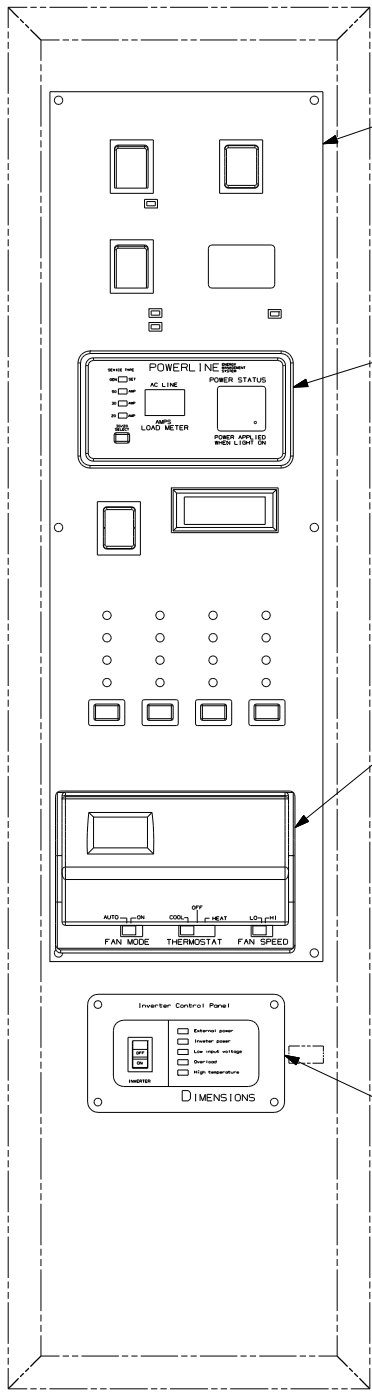


FOR ELECTRICAL TORQUE SPECIFICATIONS SEE DWG NO. 128783-01-000

FOR ELECTRICAL CALLOUTS SEE DWG NO. 121339-01-000

- 25E STEREO SYSTEM W/CD REAR
- 48R SAT SYS IN-MOTION W/O RCVR
- 78K SATELLITE DISH-AUTOMATIC
- 480 SATELLITE DISH & ELEV.SENSOR
- 290 SOLAR PANEL-10 WATT
- 1D5 ENTERTAINMENT CENTR/EXT W/CD
- 193 TV ANTENNA-AMPLIFIED SYSTEM
- 265 CODES/STANDARD-CSA/CMVSS
- 1B1 CODES/STANDARDS USA

| | | | |
|-------------------------------|---------|---------|-----|
| FIRST USED | | 06 P34H | |
| DO NOT SCALE DRAWING | | | |
| TITLE: WIRING INSTL-BODY, 12V | | | |
| SHEET 7 | PART NO | 155061 | REV |



MONITOR PANEL
133004-05-CHT
SCREW
G11-08-12B (4) 290

MONITOR
127002-10-000
SCREW
G13-06-061 (2)

THERMOSTAT
A/C AND FURNACE
105620-18-000
GASKET-THERM
134588-09-000 3
DETAIL BB 29H

REMOTE PANEL
INVERTER/CHARGER
148254-05-000 2 13X
REMOTE PANEL - INVERTER
154511-02-000 40D
CABLE ASM-MODULE JACK 50'
148254-03-000
CONDUIT
41953-09-000
(7000)

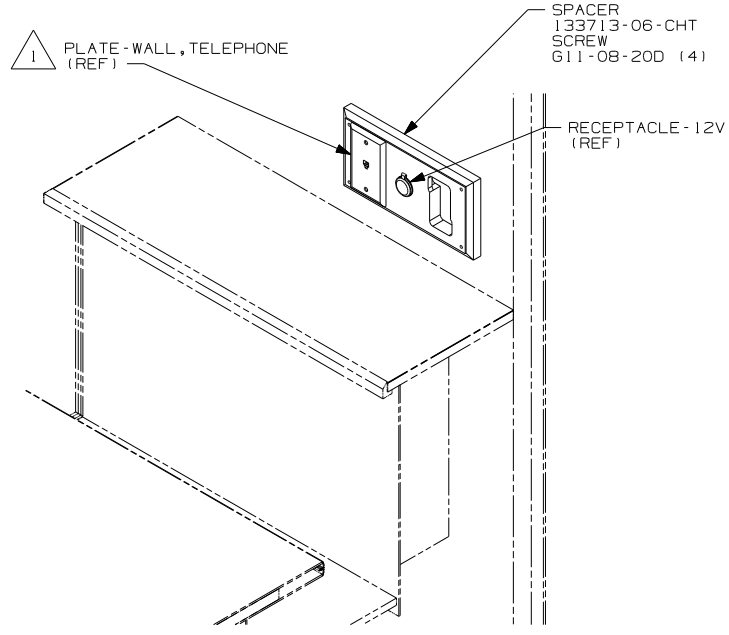
VIEW HA

3 INSTALL GASKET ON BACK SIDE OF ONE PLACE AFTER INSTALLATION OF THERMOSTAT, MAKING SURE THAT THE GASKET COVERS AND SEALS THE HOLE THAT THE WIRES PASS THROUGH

2 CONNECT CIRCUIT WB FROM COACH WIRING TO RED WIRE ON REMOTE PANEL.

1 CONNECT TELEPHONE WIRES TO MATCHING COLORS ON PLATE-TELRPHONE.

NOTES:

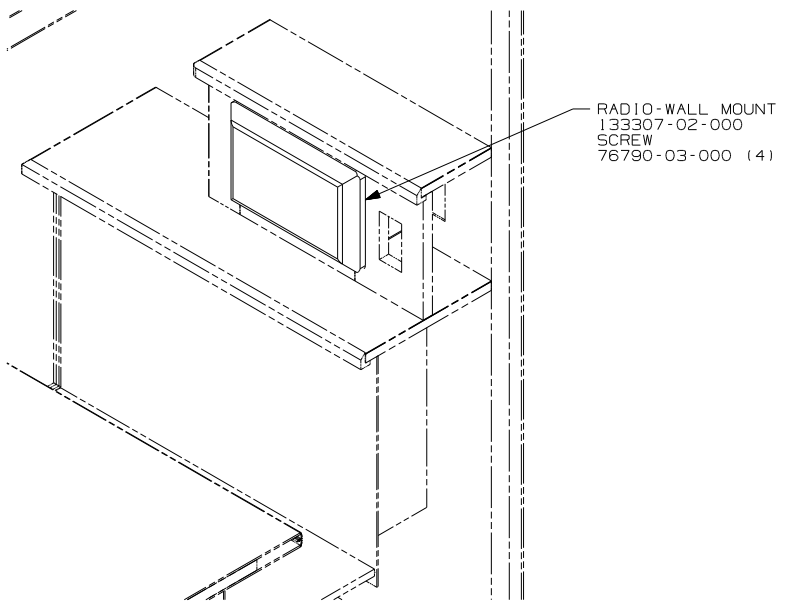


1 PLATE-WALL, TELEPHONE (REF)

SPACER
133713-06-CHT
SCREW
G11-08-20D (4)

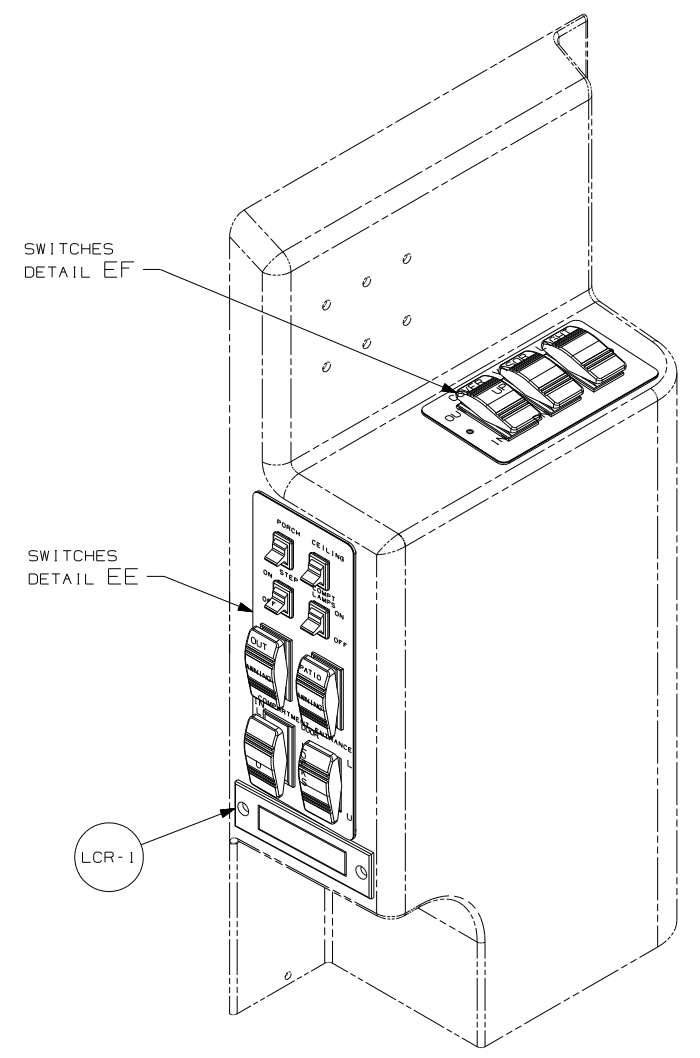
RECEPTACLE-12V (REF)

VIEW HB 26K



RADIO-WALL MOUNT
133307-02-000
SCREW
76790-03-000 (4)

VIEW HB 25E



SWITCHES
DETAIL EF

SWITCHES
DETAIL EE

LCR-1

VIEW HC

- 40D INVERTER-DC/AC, 600 WATT
- 40G POWER DOOR LOCK WITH REMOTE
- 290 SOLAR PANEL-10 WATT
- 29H A/C CENTRAL_HEAT PUMP
- 26K REAR STEREO SYSTEM WITHOUT
- 25E STEREO SYSTEM W/CD REAR
- 13X INVERTER/CHARGER 2.0 KW
- 265 CODES/STANDARDS-CSA/CMVSS
- 1B1 CODES/STANDARDS USA

1B1 265

| | |
|------------------------|--------------------|
| FIRST USED | |
| 06 P34H | |
| DO NOT SCALE DRAWING | |
| TITLE: | |
| WIRING INSTL-BODY, 12V | |
| SHEET 8 | PART NO 155061 REV |

FOR ELECTRICAL
TORQUE
SPECIFICATIONS
SEE DWG NO.
128783-01-000

X-X FOR ELECTRICAL
CALLOUTS
SEE DWG NO.
121339-01-000