



DANGER

Danger of electrical shock, burns or death. Always remove all power sources before attempting any repair, service or diagnostic work. Power can be present from shore power, generator, inverter or battery. All power sources must be disabled and secured before performing any service.

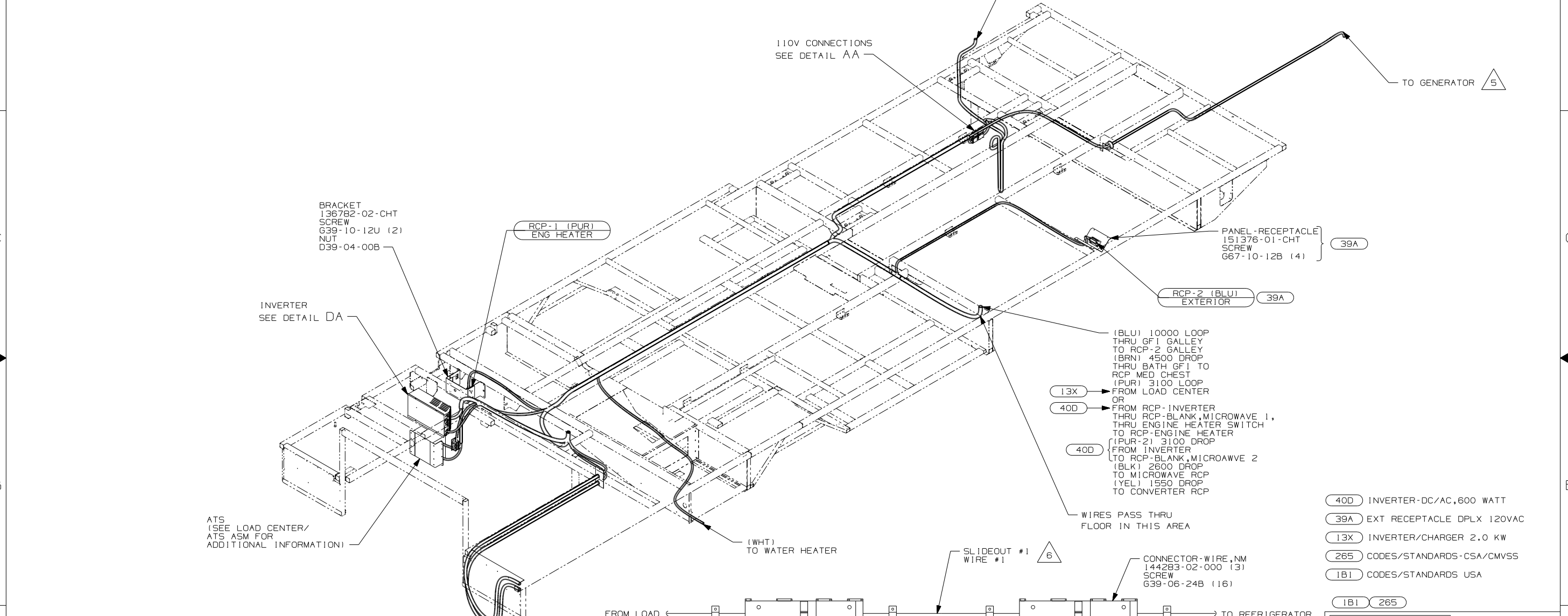


CAUTION

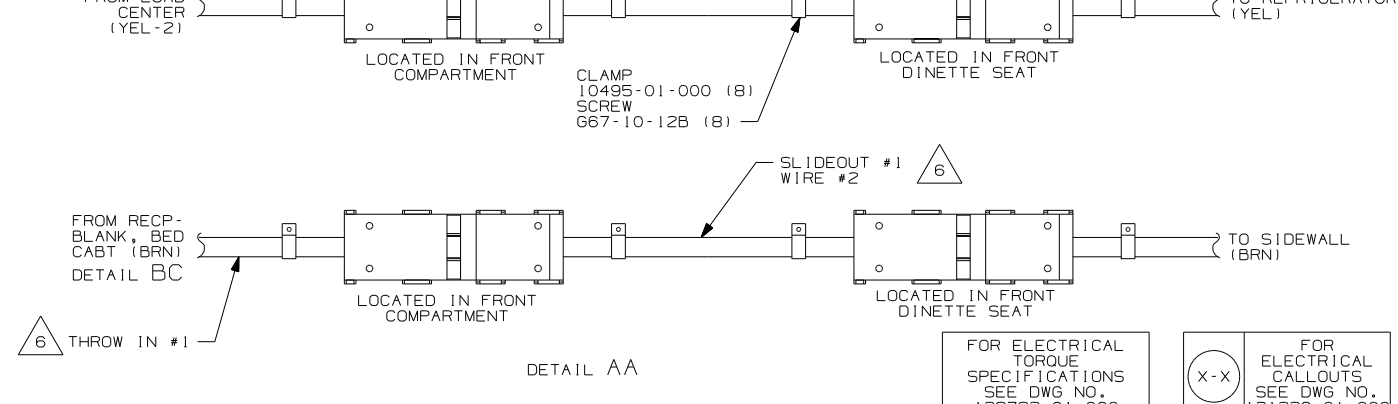
If you lack the skills, tools or equipment to perform diagnostic or repair work leave such work to an authorized Winnebago Industries dealer or other qualified shop.

DRAWING NO.	FEATURE
155460-01
155460-12	(1B1) (78J)
155460-14	(1B1) (78J) (13X)
155460-16	(265) (78J)
155460-18	(265) (78J) (13X)

RELEASE	REV DATE	DWG NO	155460
REV ZONE	REVISION RECORD	DATE	DFTR-0R16



- 7 SEE WIRING INSTL-CHASSIS FOR ADDITIONAL INFORMATION.
- 6 SEE LOAD CENTER/ATS ASM FOR ADDITIONAL INFORMATION.
- 5 SEE GENERATOR INSTALLATION FOR ADDITIONAL INFORMATION.
4. SEE EXT ENT CTR COMPT FOR ADDITIONAL INFORMATION.
3. WIRES THAT REST ON WIRE TRAYS ARE TO BE TIED DOWN WITH WIRE TIE 8343-02-000.
2. CLAMP TO FLOOR SUPPORT TUBES AS NECESSARY WITH CLAMP 10497-01-000.
1. ALL WIRES TO BE SECURED WITH CLAMP 10495 OR 10497 OR WIRE TIE 8343 OR 108046 EVERY 600MM, USE SCREW G67-XX-XXX OR G56-XX-XXX AS APPROPRIATE FOR INSTALLATION.



- 40D INVERTER-DC/AC, 600 WATT
- 39A EXT RECEPTACLE DPLX 120VAC
- 13X INVERTER/CHARGER 2.0 KW
- 265 CODES/STANDARDS-CSA/CMVSS
- 1B1 CODES/STANDARDS USA
- 1B1 265

WINNEBAGO COPYRIGHT 2004 WINNEBAGO INDUSTRIES, INC.

DFTR	ORIG. DATE
CHKR	ALL DIMENSIONS ARE IN MILLIMETERS
P.E.	FIRST USED
M.E.	06 P32T
DSNR	

UNSPECIFIED TOLERANCES ARE: MATERIAL:

HOLE DIM (X)	: 3
ONE-PLACE (X, X)	: 1.5
TWO-PLACE (X, XX)	: 0.50
ANGLE	: 1°

THIRD ANGLE PROJECTION

DO NOT SCALE DRAWING

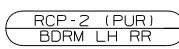
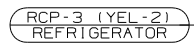
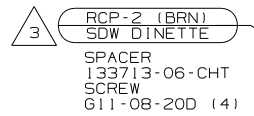
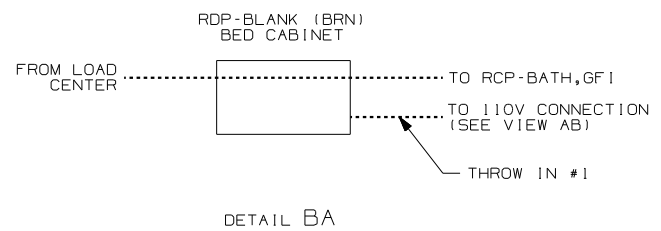
TITLE: WIRING INSTL-BODY, 110V

SHEET 1 OF 4 PART NO 155460

REF: 1 9/14/2005

FOR ELECTRICAL TORQUE SPECIFICATIONS SEE DWG NO. 128783-01-000

(X-X) FOR ELECTRICAL CALLOUTS SEE DWG NO. 121339-01-000



3 WIRE IN SIDEWALL

2. ALL WIRES ARE TO BE CLAMPED 10497-05-000 WITHIN 200 OF
OUTLET BOXES AND SPLICES. USE SCREW G67-10-12B.

1. ALL WIRES TO BE SECURED WITH CLAMP 10495
OR 10497 OR WIRE TIE 8343 OR 108046 EVERY
600MM, USE SCREW G67-XX-XXX OR G56-XX-XXX
AS APPROPRIATE FOR INSTALLATION.

NOTES:

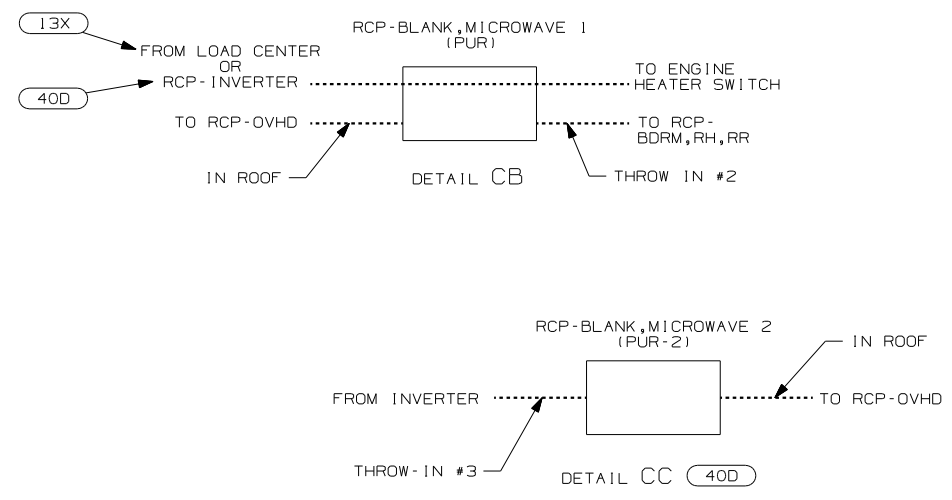
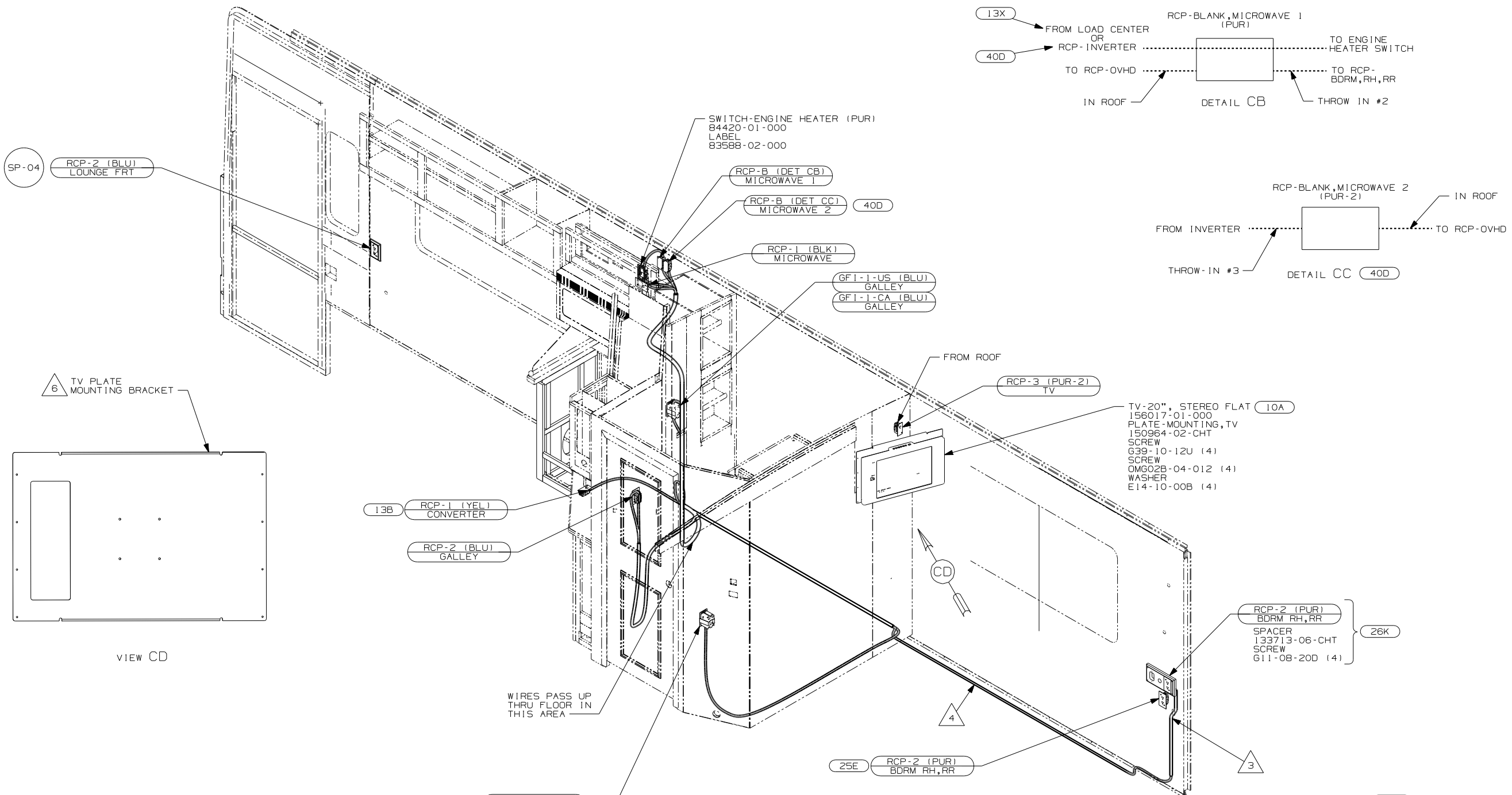
- 49M MATTRESS, AIR
- 265 CODES/STANDARDS - CSA/CMVSS
- 1B1 CODES/STANDARDS USA

1B1 265

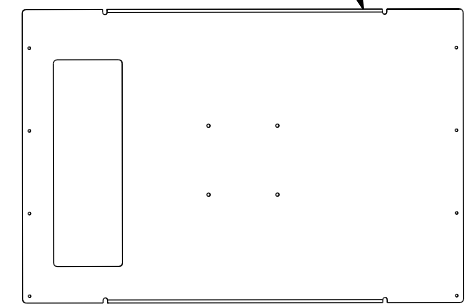
FIRST USED	
06 P32T	
DO NOT SCALE DRAWING	
TITLE: WIRING INSTL-BODY, 110V	
SHEET 2	PART NO 155460

FOR ELECTRICAL
TORQUE
SPECIFICATIONS
SEE DWG NO.
128783-01-000

X-X
FOR
ELECTRICAL
CALLOUTS
SEE DWG NO.
121339-01-000



6 TV PLATE MOUNTING BRACKET



VIEW CD

WIRES PASS UP THRU FLOOR IN THIS AREA

- 6 CENTER MOUNTING BRACKET ON THE MOUNTING STRAPS.
- 5 SEE EXTERIOR ENT CTR FOR ADDITIONAL INFORMATION.
- 4 ROUTE WIRE IN THE FLOOR DURING INSTALLATION.
- 3 ROUTE WIRE IN SIDEWALL DURING INSTALLATION.

2. ALL WIRES ARE TO BE CLAMPED WITH CLAMP 10497-05-000 WITH IN 200 OF OUTLET BOXES AND SPLICES, USE SCREW G67-10-12B.

1. ALL WIRES TO BE SECURED WITH CLAMP 10495 OR 10497 OR WIRE TIE 8343 OR 108046 EVERY 600MM, USE SCREW G67-XX-XXX OR G56-XX-XXX AS APPROPRIATE FOR INSTALLATION.

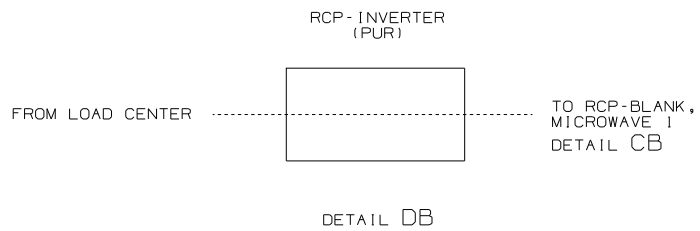
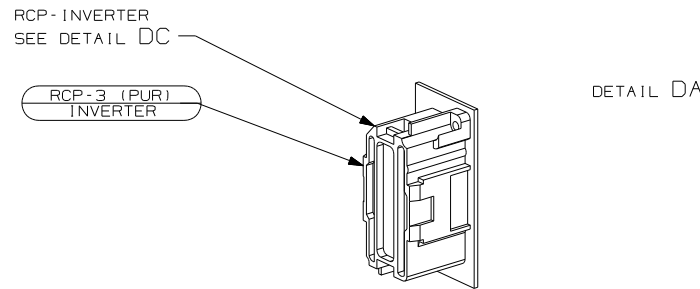
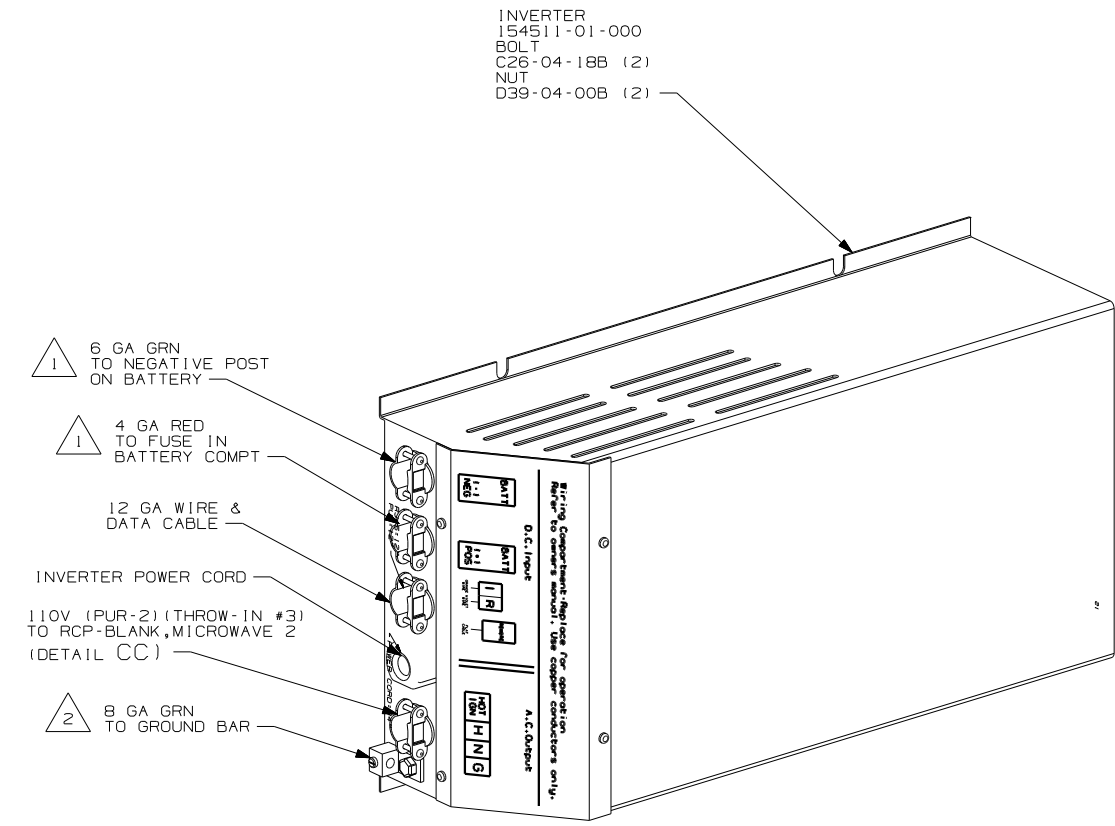
NOTES:

- 26K REAR STEREO SYSTEM WITHOUT
- 25E STEREO SYSTEM W/CD REAR
- 10A TV (REAR) -20"COLOR, STEREO
- 13B INVERTER/CHARGER-DC/AC W/O
- 265 CODES/STANDARDS-CSA/CMVSS
- 1B1 CODES/STANDARDS USA

FIRST USED	06 P32T
TITLE:	DO NOT SCALE DRAWING
	WIRING INSTL-BODY, 110V
SHEET 3	PART NO 155460

FOR ELECTRICAL TORQUE SPECIFICATIONS SEE DWG NO. 128783-01-000

FOR ELECTRICAL CALLOUTS SEE DWG NO. 121339-01-000



2 SEE LOAD CENTER/ATS ASM FOR ADDITIONAL INFORMATION.

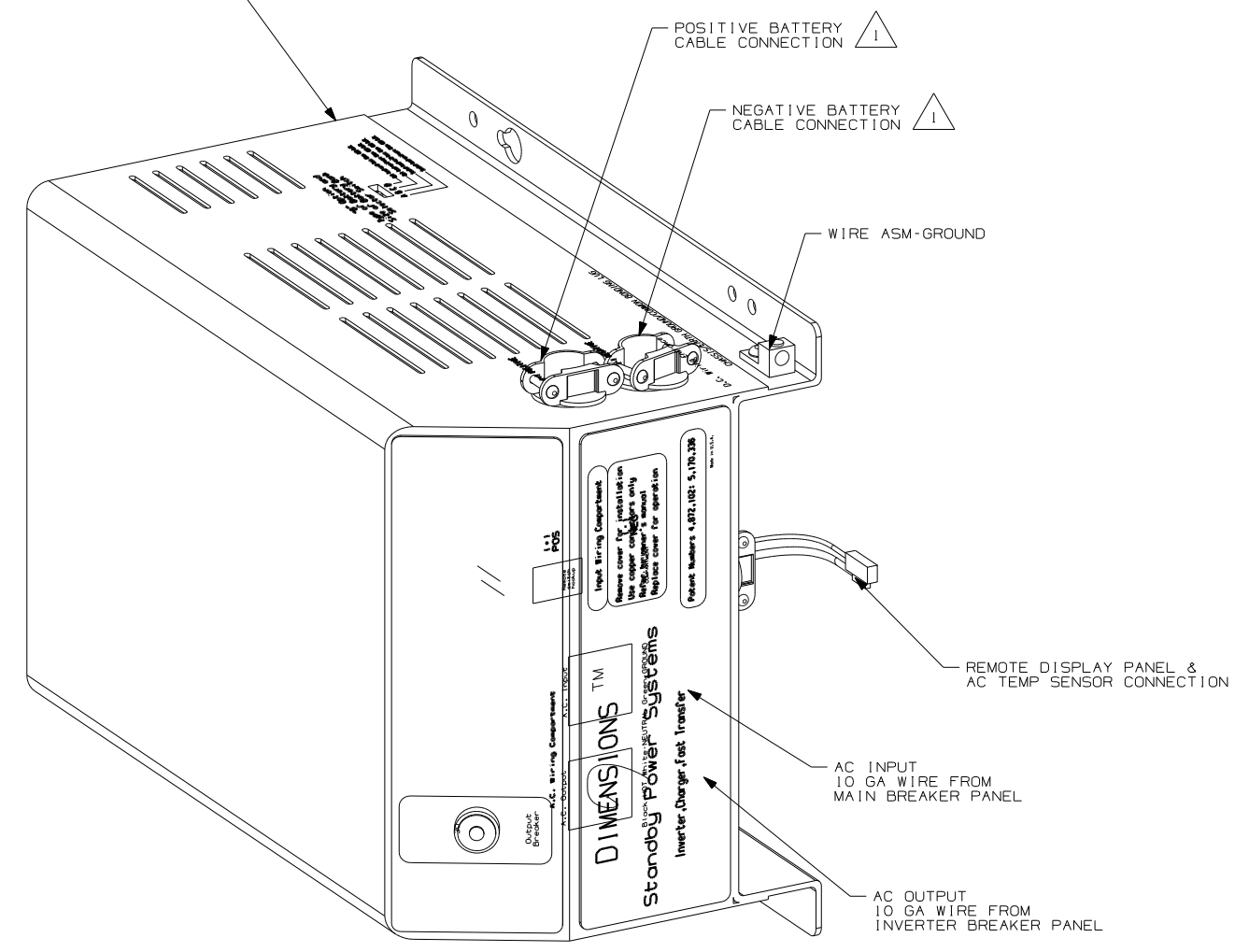
1 SEE WIRING INSTL-CHASSIS FOR ADDITIONAL INFORMATION.

NOTES:

40D

13X

INVERTER/CHARGER
148254-01-000
BOLT
C26-04-18B (2)
NUT
D39-04-00B (2)



DETAIL DA

40D INVERTER-DC/AC, 600 WATT

13X INVERTER/CHARGER 2.0 KW

FIRST USED	06 P32T
TITLE	DO NOT SCALE DRAWING
	WIRING INSTL-BODY, 110V
SHEET 4	PART NO 155460