



DANGER

Danger of electrical shock, burns or death. Always remove all power sources before attempting any repair, service or diagnostic work. Power can be present from shore power, generator, inverter or battery. All power sources must be disabled and secured before performing any service.

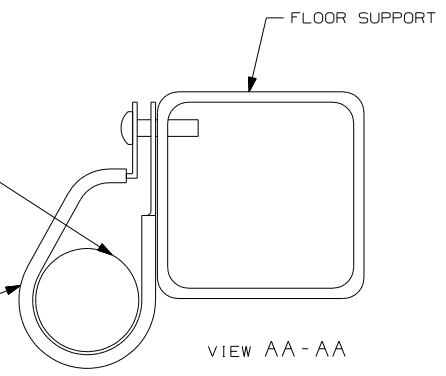
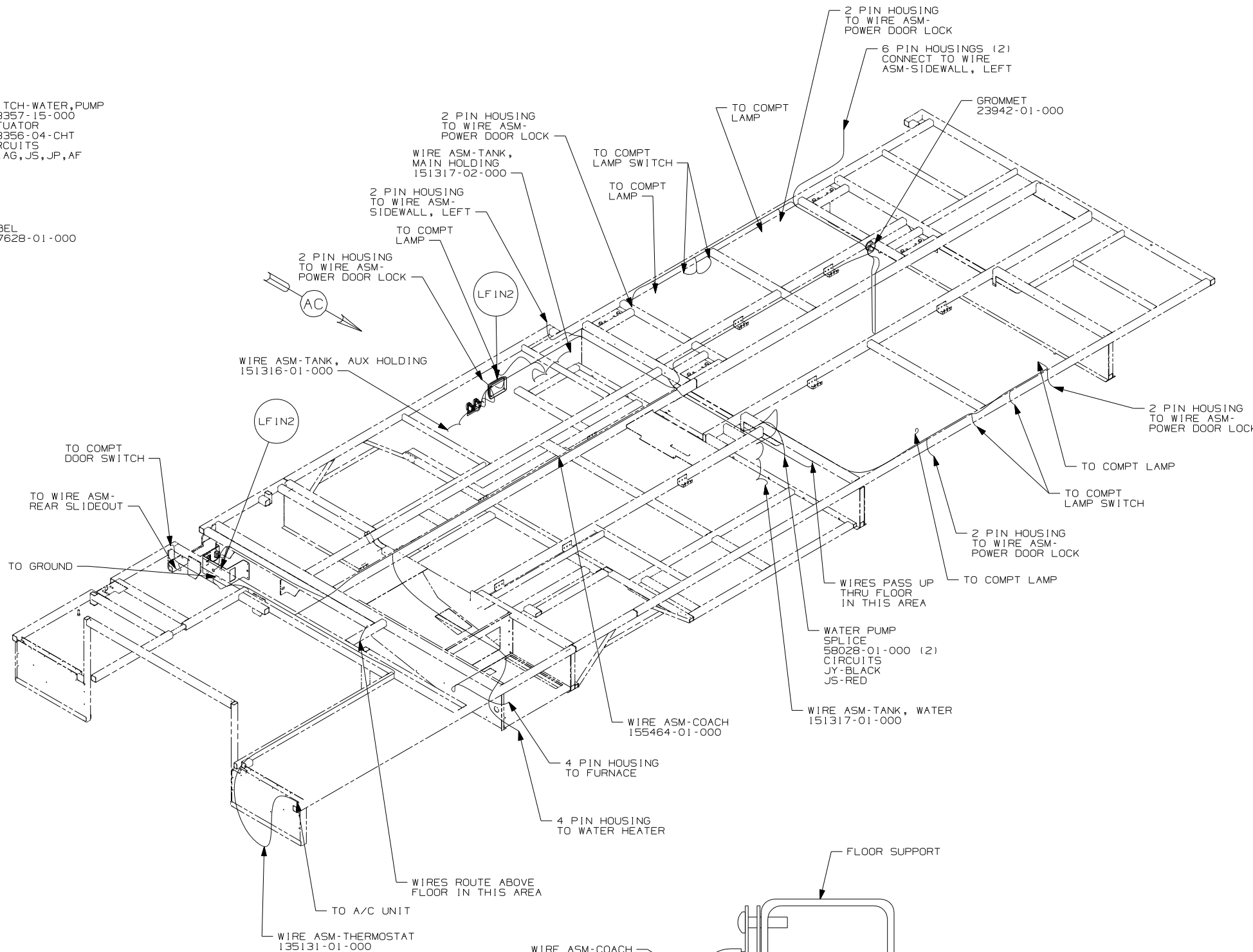
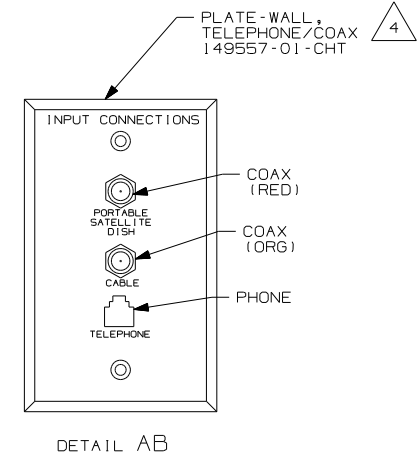
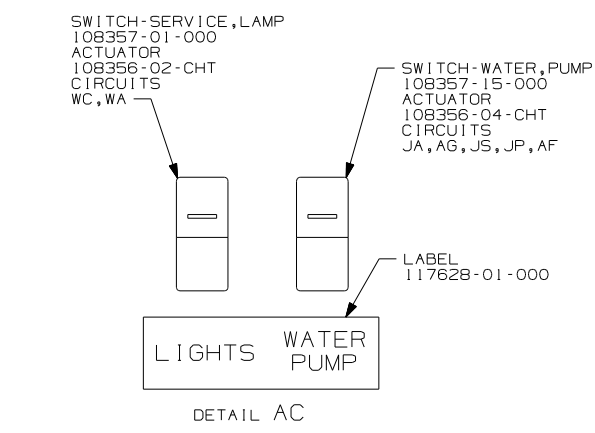


CAUTION

If you lack the skills, tools or equipment to perform diagnostic or repair work leave such work to an authorized Winnebago Industries dealer or other qualified shop.

DRAWING NO.	FEATURE
155459-01	(WIN)
155459-02	(ITA)

RELEASE	REV DATE	DWG NO
A		155459
REV ZONE	REVISION RECORD	DATE DFR-0R16



4. CONNECT TELEPHONE WIRES TO MATCHING COLORS ON PLATE-TELEPHONE.
- WIRES THAT REST ON WIRE TRAYS ARE TO BE TIED DOWN WITH WIRE TIE 8343-02-000.
 - CLAMP TO FLOOR SUPPORT TUBES AS NECESSARY WITH CLAMP 10497-01-000.
 - ALL WIRES TO BE SECURED WITH CLAMP 10495 OR 10497 OR WIRE TIE 8343 OR 108046 EVERY 600MM, USE SCREW G67-XX-XXX OR G56-XX-XXX AS APPROPRIATE FOR INTALLATION.

FOR ELECTRICAL TORQUE SPECIFICATIONS SEE DWG NO. 128783-01-000

(X-X) FOR ELECTRICAL CALLOUTS SEE DWG NO. 121339-01-000

- (ITA) ITASCA ONLY
 - (WIN) WINNEBAGO ONLY
 - (265) CODES/STANDARDS-CSA/CMVSS
 - (1B1) CODES/STANDARDS USA
- (1B1) (265)

WINNEBAGO COPYRIGHT 2006 WINNEBAGO INDUSTRIES, INC.

DFTR	ORIG. DATE
CHKR	ALL DIMENSIONS ARE IN MILLIMETERS
P.E.	
M.E.	FIRST USED
DSNR	06 P32T

UNSPECIFIED TOLERANCES ARE: MATERIAL:

WHOLE DIM (X)	: 3
ONE-PLACE (X.X)	: 1.5
TWO-PLACE (X.XX)	: 0.50
ANGLE	: 1°

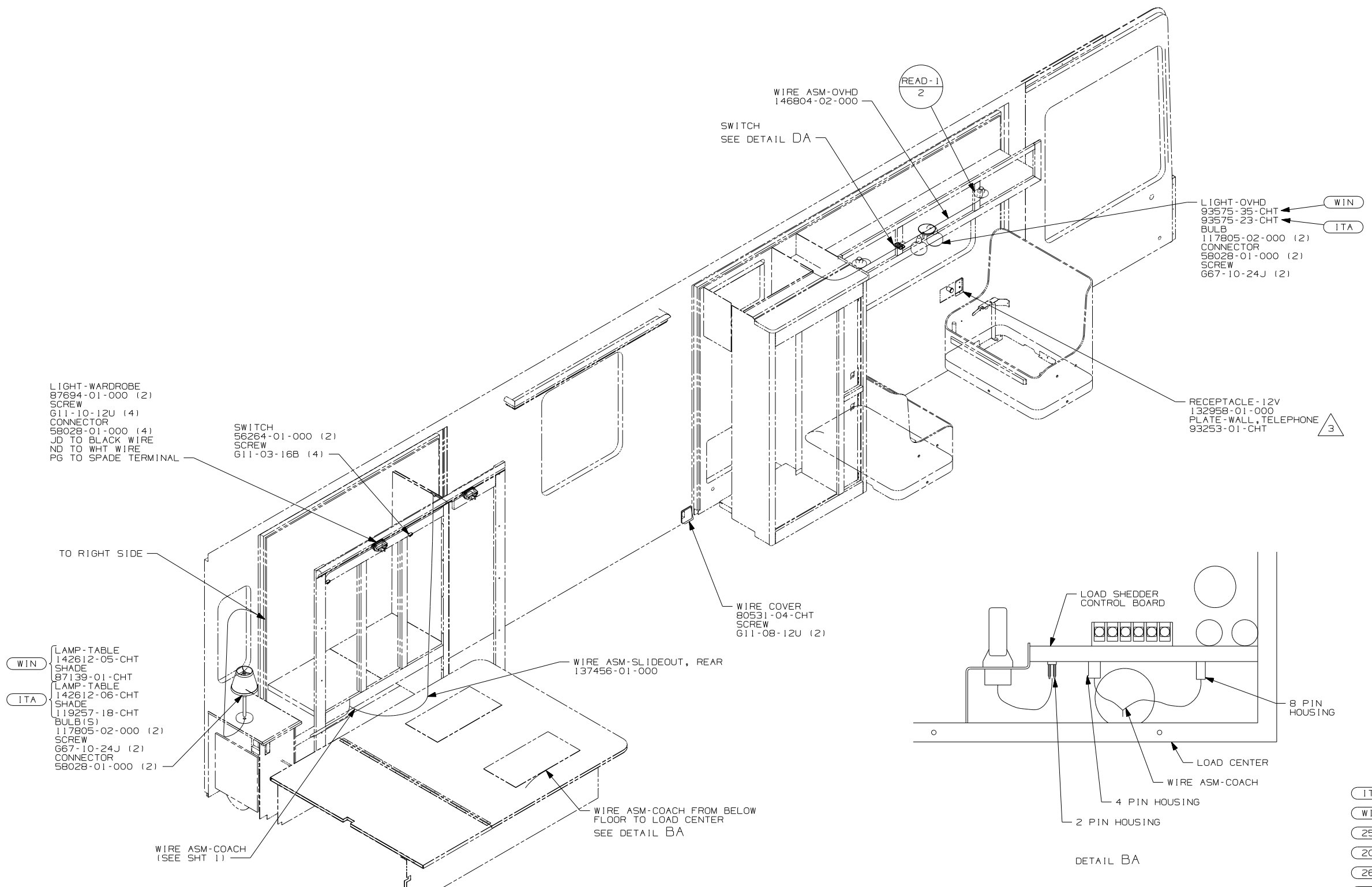
THIRD ANGLE PROJECTION

DO NOT SCALE DRAWING

TITLE: WIRING INSTL-BODY, 12V

SHEET 1 OF 7 PART NO 155459 REV

REF: 1 6/16/2006



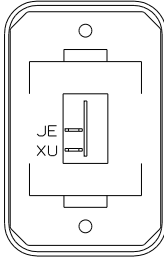
- 3 CONNECT TELEPHONE WIRES TO MATCHING COLORS ON PLATE-TELEPHONE.
- 2 SPEAKER TO BE MOUNTED AT AN INWARD ANGLE 30 DEGREES FROM SIDEWALL.

1. ALL WIRES TO BE SECURED WITH CLAMP 10495 OR 10497 OR WIRE TIE 8343 OR 108046 EVERY 600MM, USE SCREW G67-XX-XXX OR G56-XX-XXX AS APPROPRIATE FOR INTALLATION.

NOTES:

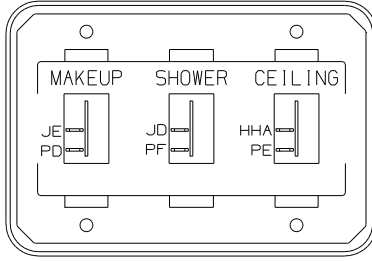
- ITA ITASCA ONLY
- WIN WINNEBAGO ONLY
- 25E STEREO SYSTEM W/CD REAR
- 20F DELUXE SOUND SYSTEM-WITHOUT
- 265 CODES/STANDARDS-CSA/CMVSS
- 1B1 CODES/STANDARDS USA

FIRST USED		06 P32T	
DO NOT SCALE DRAWING			
TITLE: WIRING INSTL-BODY, 12V			
SHEET 2	PART NO	155459	REV



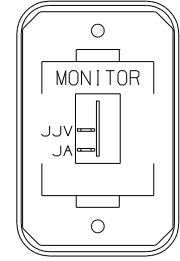
SWITCH-ROCKER
135740-01-CHT
SWITCH-BASE
135741-01-CHT
SWITCH-BEZEL
135742-01-CHT
SCREW
G11-08-08U (2)

DETAIL DA

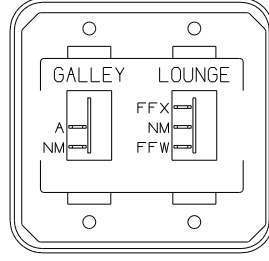


SWITCH-ROCKER
135740-01-CHT (3)
SWITCH-BASE
135741-03-CHT
SWITCH-BEZEL
135742-28-CHT
SCREW
G11-08-08U (4)

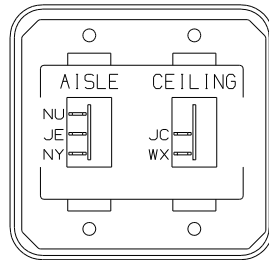
DETAIL DD



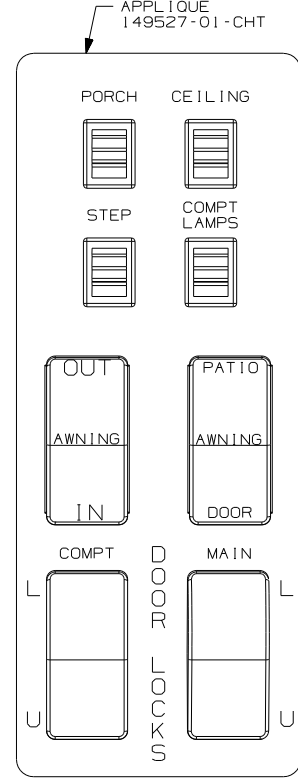
SWITCH-ROCKER
135740-01-CHT
SWITCH-BASE
135741-01-CHT
SWITCH-BEZEL
135742-30-CHT
SCREW
G11-08-08U (2)



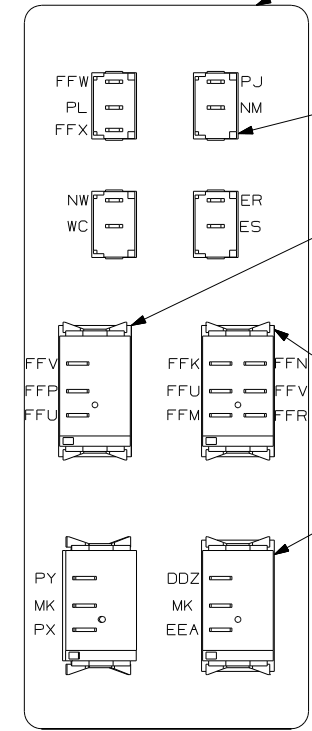
SWITCH-ROCKER
135740-01-CHT
135740-02-CHT
SWITCH-BASE
135741-02-CHT
SWITCH-BEZEL
135742-18-CHT
SCREW
G11-08-08U (4)



SWITCH-ROCKER
135740-01-CHT
135740-02-CHT
SWITCH-BASE
135741-02-CHT
SWITCH-BEZEL
135742-13-CHT
SCREW
G11-08-08U (4)



DETAIL DK (FRONT SIDE)



DETAIL DK (BACK SIDE)

PLATE-SWITCH, CONSOLE, RH
149521-01-CHT
SCREW
G11-06-10U (4)

SWITCH
132180-01-CHT (3)
132180-02-CHT

SWITCH-AWNING SELECT
ACTUATOR
108357-08-000
108356-13-CHT
SWITCH-BLANK
96241-03-000

SWITCH-AWNING CONTROL
ACTUATOR
108357-06-000
108356-12-CHT
SWITCH-BLANK
96241-03-000

SWITCH-DOOR LOCKS
ACTUATOR
108357-07-000 (2)
108356-01-CHT (2)

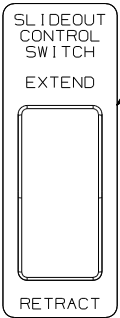
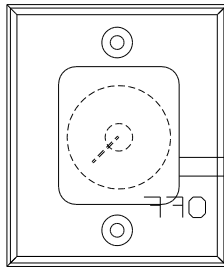


PLATE-SWITCH
144363-09-CHT
SWITCH
108357-06-000
ACTUATOR
108356-02-CHT
NUT
D65-08-00B (2)
LABEL
116220-01-000
CIRCUITS:
DDA, CCY, DDA, BBM, CCZ, BBN

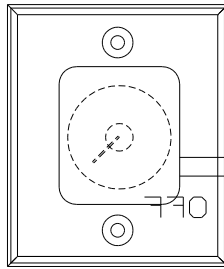
DETAIL DB

LABEL-WARNING
116549-01-000

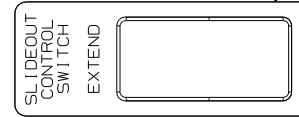
WARNING UNDERSTAND OPERATOR'S MANUAL BEFORE USING
KEEP PEOPLE AND OBSTRUCTIONS CLEAR OF
SLIDEOUT ROOM WHEN OPERATING TO AVOID
INJURY AND/OR PROPERTY DAMAGE



SWITCH
137889-01-000
SCREW
G11-06-10U (2)



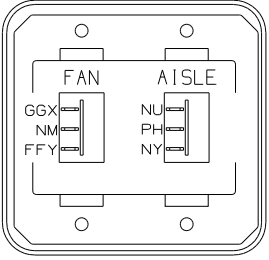
SWITCH
137889-01-000
SCREW
G11-06-10U (2)



LABEL-WARNING
116549-01-000

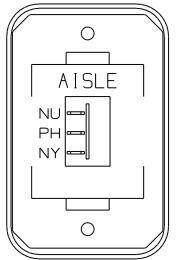
WARNING UNDERSTAND OPERATOR'S MANUAL BEFORE USING
KEEP PEOPLE AND OBSTRUCTIONS CLEAR OF
SLIDEOUT ROOM WHEN OPERATING TO AVOID
INJURY AND/OR PROPERTY DAMAGE

DETAIL DG



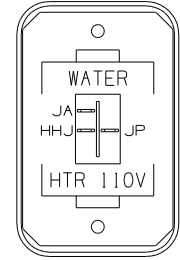
SWITCH-ROCKER
135740-02-CHT (2)
SWITCH-BASE
135741-02-CHT
SWITCH-BEZEL
135742-02-CHT
SCREW
G11-08-08U (4)
WIRE ASM-RESISTOR, FAN
140195-01-000

DETAIL DC (41Y)



SWITCH-ROCKER
135740-02-CHT
SWITCH-BASE
135741-01-CHT
SWITCH-BEZEL
135742-06-CHT
SCREW
G11-08-08U (2)

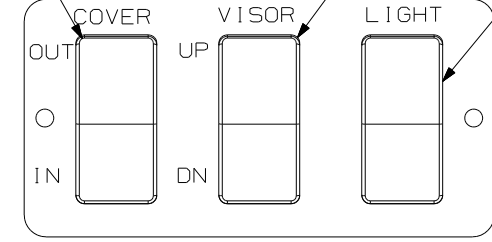
DETAIL DC (41Z)



SWITCH-ROCKER
135740-06-CHT
SWITCH-BASE
135741-01-CHT
SWITCH-BEZEL
135742-35-CHT
SCREW
G11-08-08U (2)

DETAIL DH

SWITCH-COVER
108357-06-000
ACTUATOR-SWITCH
108356-01-CHT
CIRCUITS
GX, HHC, KA, HHD



DETAIL DL

PLATE-SWITCH
142487-01-CHT
APPLIQUE
142475-01-CHT
SCREW
G11-06-10U (2)

SWITCH-VISOR
108357-16-000
ACTUATOR-SWITCH
108356-01-CHT
CIRCUITS
HHN, MK, HHM, MU
SWITCH-BLANK
96241-03-000

SWITCH-LAMPS
108357-01-000
ACTUATOR-SWITCH
108356-01-CHT
CIRCUITS
FFW, PL, FFX

- NOTES:
- 2 WITHOUT 9C1
 - 1 CONNECT WIRE ASM-RESISTOR, FAN TO 2-PIN HOUSING LOCATED BY THE SWITCH WIRES

- 40G POWER DOOR LOCK WITH REMOTE
- 41Y FAN - CEILING
- 41Z DECORATIVE LIGHT - CEILING
- 28K SUNVISORS - MANUAL (2)
- 28J SUNVISORS - POWERED (2)
- 9C1 AWNING-ELECTRIC PACKAGE
- 265 CODES/STANDARDS-CSA/CMVSS
- 1B1 CODES/STANDARDS USA
- 1B1 265

FIRST USED	
06 P32T	
DO NOT SCALE DRAWING	
TITLE: WIRING INSTL-BODY, 12V	
SHEET 4	PART NO 155459

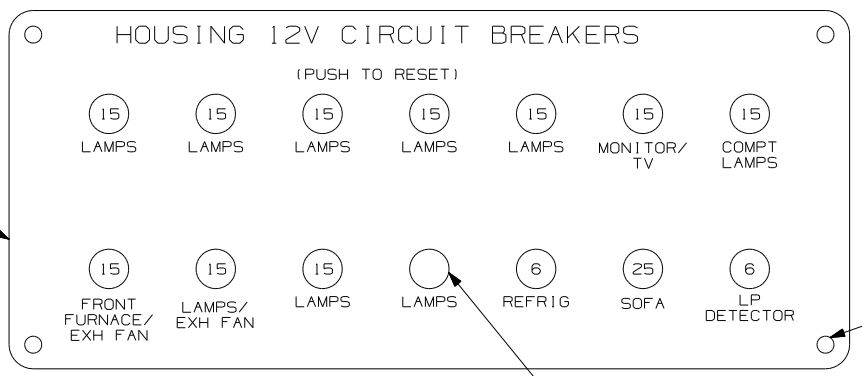


PLATE
139067-03-CHT
LABEL
92547-12-000

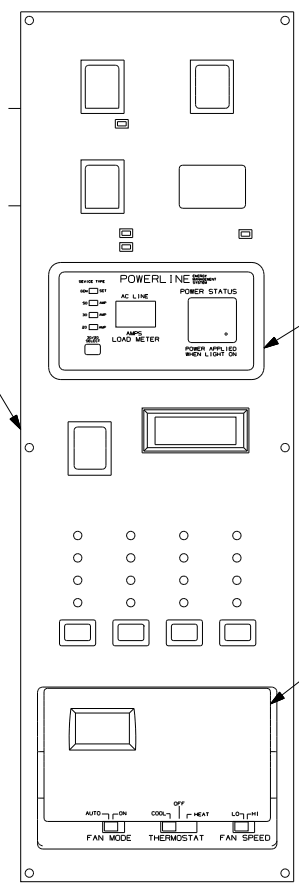
SCREW
G11-10-12U (4)

PLUG-PLASTIC
81211-04-000

CIRCUIT BREAKER
(FRONT VIEW)
DETAIL EB

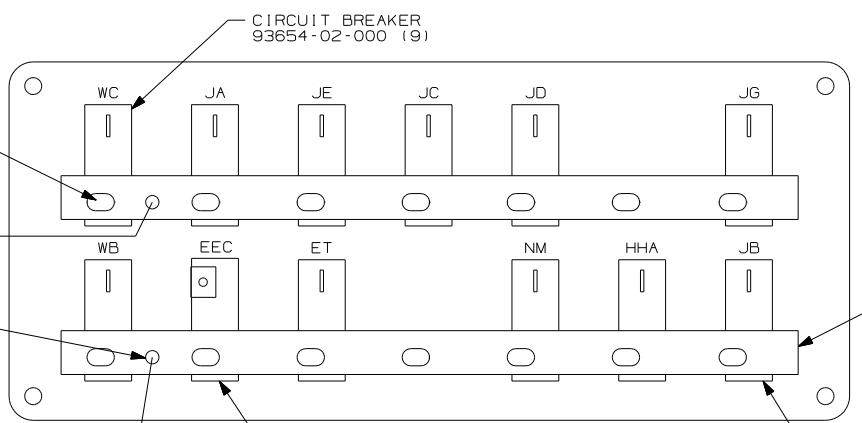
290 MONITOR-PANEL
133004-05-CHT
SCREW
G11-08-08U (16)

MONITOR-EMS
127002-10-000
SCREW
G13-06-16I (2)



THERMOSTAT
105620-18-000
GASKET THERM
134588-09-000
DETAIL ED

DETAIL EC



EA
EA

BUSS BAR
92786-06-000 (2)

SCREW
G52-06-04B (13)

FROM WIRE
ASM-COACH 6 BLK

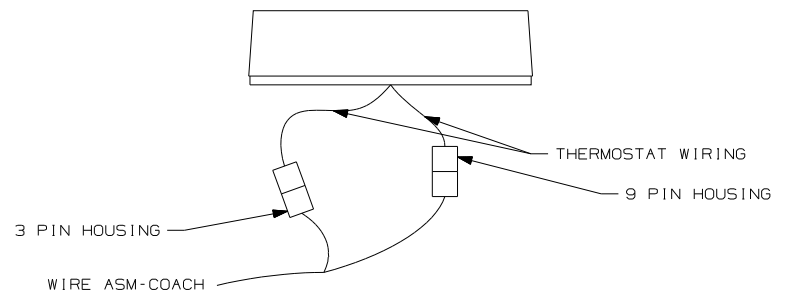
SCREW
G39-08-06B (2)

FROM WIRE
ASM-CHASSIS 6 BLK

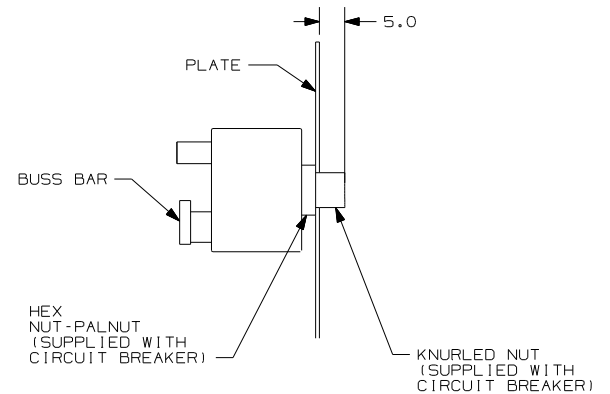
CIRCUIT BREAKER
93655-01-000
(25 AMP)
SCREW
G52-06-04B
WASHER
OMEQ2B

CIRCUIT BREAKER
93654-01-000 (2)

CIRCUIT BREAKER
(BACK VIEW)
DETAIL EB



DETAIL ED



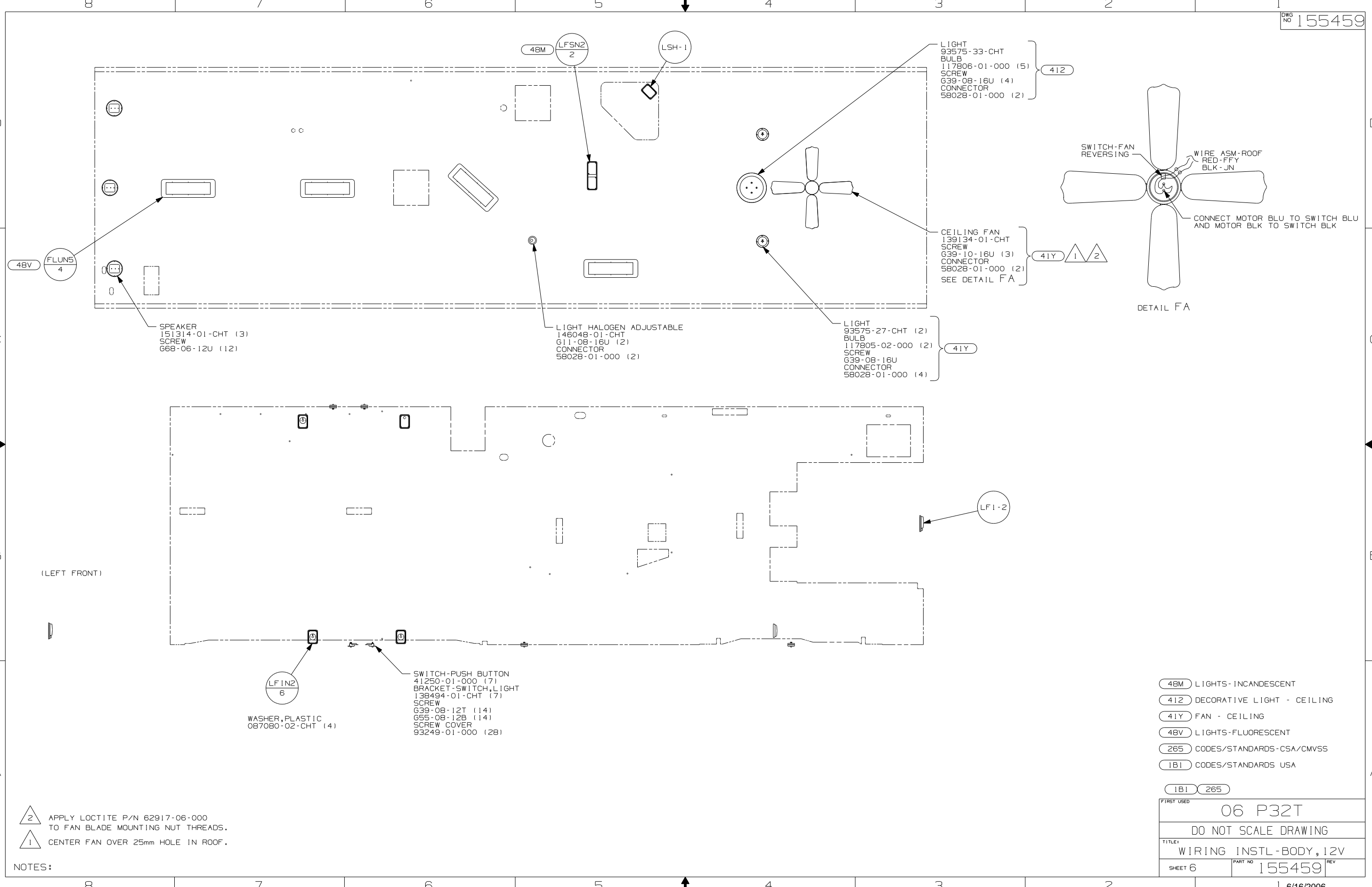
DETAIL EA

1 INSTALL GASKET ON BACK SIDE OF ONE PLACE AFTER INSTALLATION, MAKING SURE THAT THE GASKET COVERS AND SEALS THE HOLE THAT THE WIRES PASS THROUGH

NOTES:

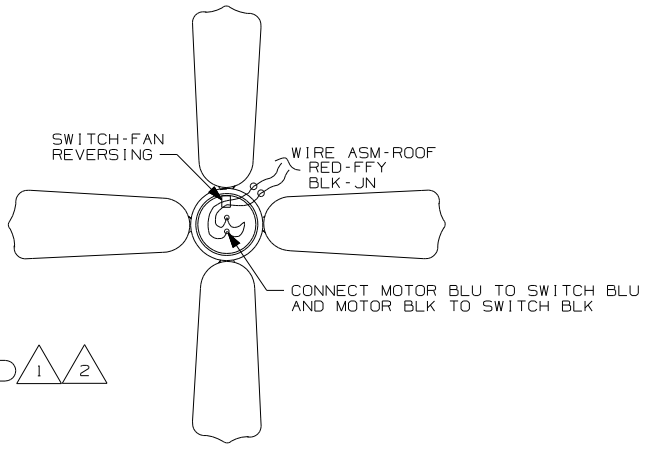
- 29H A/C CENTRAL-HEAT PUMP
- 290 SOLAR PANEL-10 WATT
- 265 CODES/STANDARDS-CSA/CMVSS
- 1B1 CODES/STANDARDS USA

FIRST USED		06 P32T	
DO NOT SCALE DRAWING			
TITLE: WIRING INSTL-BODY, 12V			
SHEET 5	PART NO	155459	REV



LIGHT
93575-33-CHT
BULB
117806-01-000 (5)
SCREW
639-08-16U (4)
CONNECTOR
58028-01-000 (2)

412



DETAIL FA

CEILING FAN
139134-01-CHT
SCREW
639-10-16U (3)
CONNECTOR
58028-01-000 (2)
SEE DETAIL FA

41Y



LIGHT
93575-27-CHT (2)
BULB
117805-02-000 (2)
SCREW
639-08-16U
CONNECTOR
58028-01-000 (4)

41Y

LIGHT HALOGEN ADJUSTABLE
146048-01-CHT
G11-08-16U (2)
CONNECTOR
58028-01-000 (2)

SPEAKER
151314-01-CHT (3)
SCREW
668-06-12U (12)

SWITCH-PUSH BUTTON
41250-01-000 (7)
BRACKET-SWITCH, LIGHT
138494-01-CHT (7)
SCREW
639-08-12T (14)
655-08-12B (14)
SCREW COVER
93249-01-000 (28)

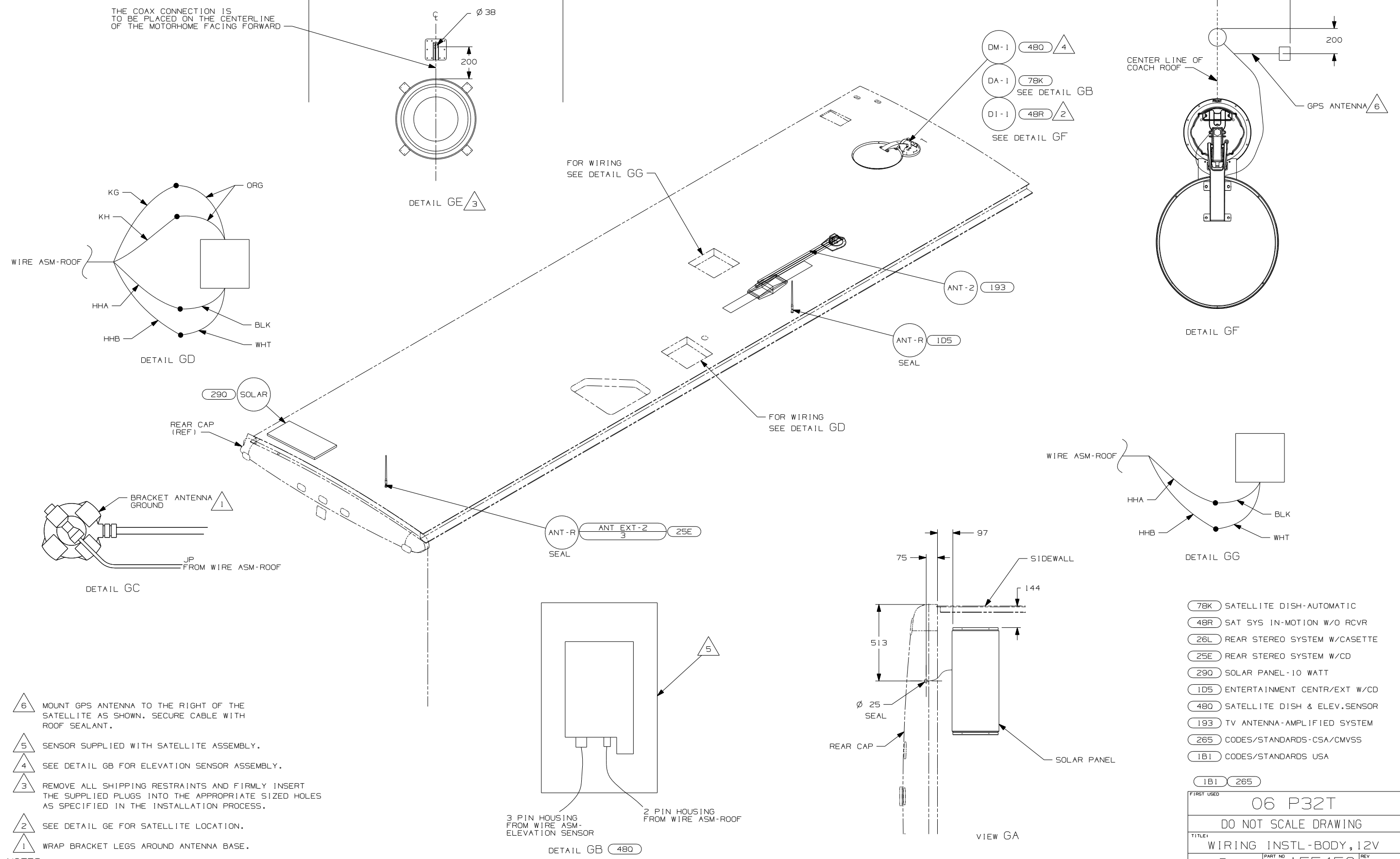
WASHER, PLASTIC
087080-02-CHT (4)

- 48M LIGHTS- INCANDESCENT
- 412 DECORATIVE LIGHT - CEILING
- 41Y FAN - CEILING
- 48V LIGHTS-FLUORESCENT
- 265 CODES/STANDARDS-CSA/CMVSS
- 1B1 CODES/STANDARDS USA

1B1 265

FIRST USED		06 P32T	
DO NOT SCALE DRAWING			
TITLE: WIRING INSTL-BODY, 12V			
SHEET 6	PART NO	155459	REV

- NOTES:
- 2 APPLY LOCTITE P/N 62917-06-000 TO FAN BLADE MOUNTING NUT THREADS.
 - 1 CENTER FAN OVER 25mm HOLE IN ROOF.



- NOTES:
- 6 MOUNT GPS ANTENNA TO THE RIGHT OF THE SATELLITE AS SHOWN. SECURE CABLE WITH ROOF SEALANT.
 - 5 SENSOR SUPPLIED WITH SATELLITE ASSEMBLY.
 - 4 SEE DETAIL GB FOR ELEVATION SENSOR ASSEMBLY.
 - 3 REMOVE ALL SHIPPING RESTRAINTS AND FIRMLY INSERT THE SUPPLIED PLUGS INTO THE APPROPRIATE SIZED HOLES AS SPECIFIED IN THE INSTALLATION PROCESS.
 - 2 SEE DETAIL GE FOR SATELLITE LOCATION.
 - 1 WRAP BRACKET LEGS AROUND ANTENNA BASE.

- 7BK SATELLITE DISH-AUTOMATIC
- 4BR SAT SYS IN-MOTION W/O RCVR
- 26L REAR STEREO SYSTEM W/CASSETTE
- 25E REAR STEREO SYSTEM W/CD
- 290 SOLAR PANEL-10 WATT
- 1D5 ENTERTAINMENT CENTR/EXT W/CD
- 48Q SATELLITE DISH & ELEV.SENSOR
- 193 TV ANTENNA-AMPLIFIED SYSTEM
- 265 CODES/STANDARDS-CSA/CMVSS
- 1B1 CODES/STANDARDS USA

FIRST USED	06 P32T
DO NOT SCALE DRAWING	
TITLE:	WIRING INSTL-BODY, 12V
SHEET 7	PART NO 155459 REV