



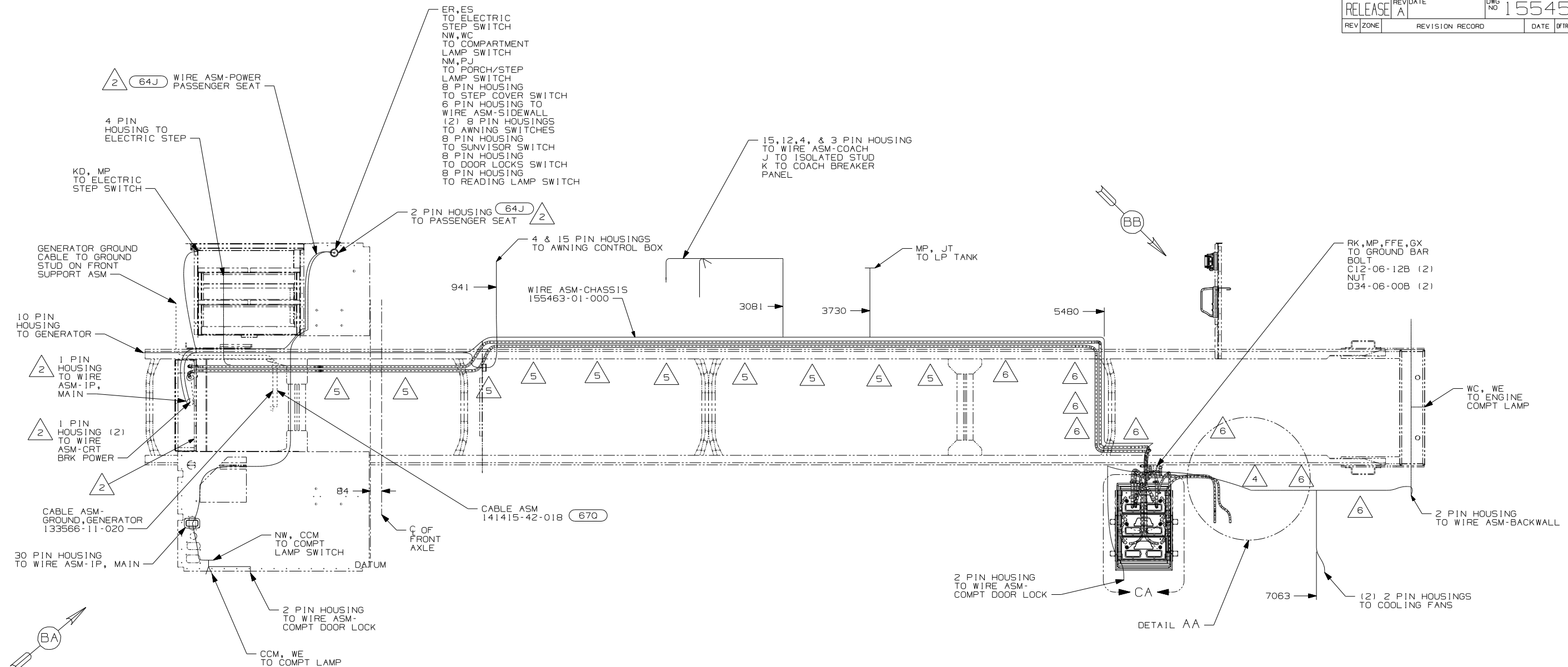
**DANGER**

**Danger of electrical shock, burns or death.** Always remove all power sources before attempting any repair, service or diagnostic work. Power can be present from shore power, generator, inverter or battery. All power sources must be disabled and secured before performing any service.



**CAUTION**

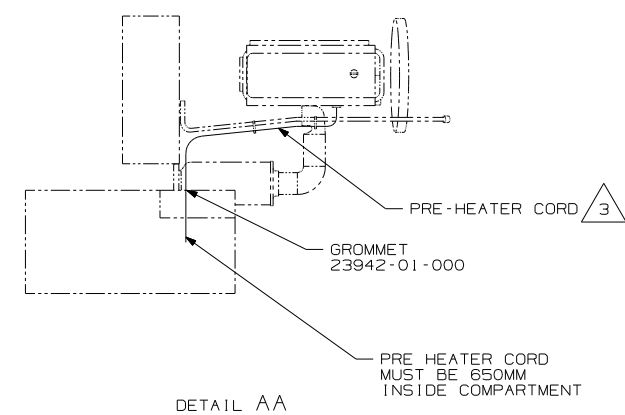
If you lack the skills, tools or equipment to perform diagnostic or repair work leave such work to an authorized Winnebago Industries dealer or other qualified shop.



- 6 CLAMP 10497-03-000, SCREW G11-10-16B.
- 5 CLAMP 83610-01-000, SCREW G11-10-16B.
- 4 USE WIRE TIE 8343-04-000 TO SECURE WIRE TO FLOOR SUPPORT FRAME AT LEAST ONCE EVERY 600MM.
- 3 SECURE CORD AWAY FROM ALL MOVING PARTS AND EXHAUST WITH TIE-WIRE 93147-01-000 AS REQUIRED.
- 2 SEE WIRING INSTL-FRONT END FOR ADDITIONAL INFORMATION.

1. LEGEND: — WINNEBAGO; ..... CABLE; - - - - - CHASSIS SUPPLIED WIRING.

NOTES:

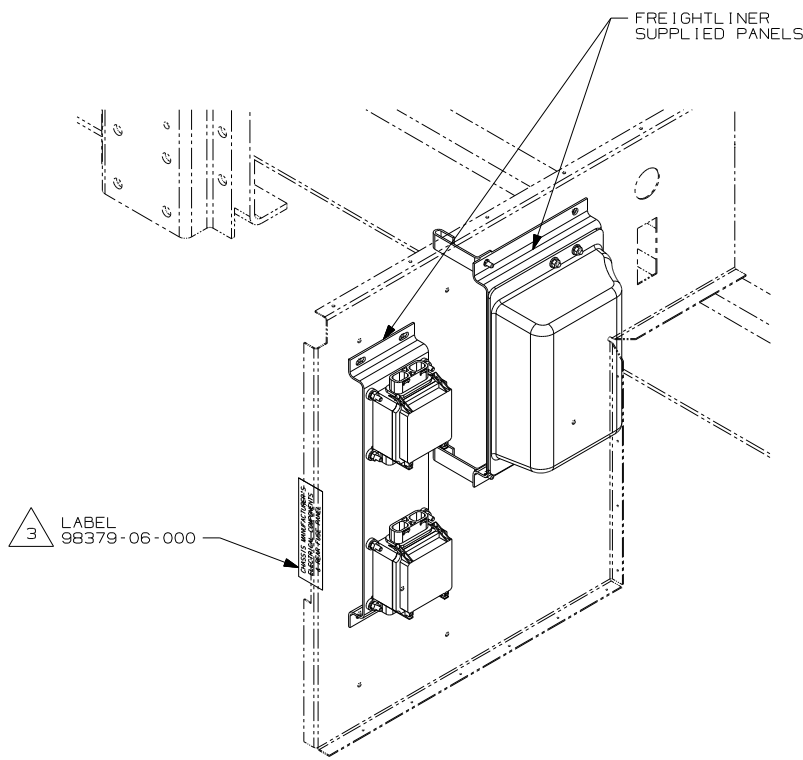


FOR ELECTRICAL TORQUE SPECIFICATIONS SEE DWG NO. 128783-01-000

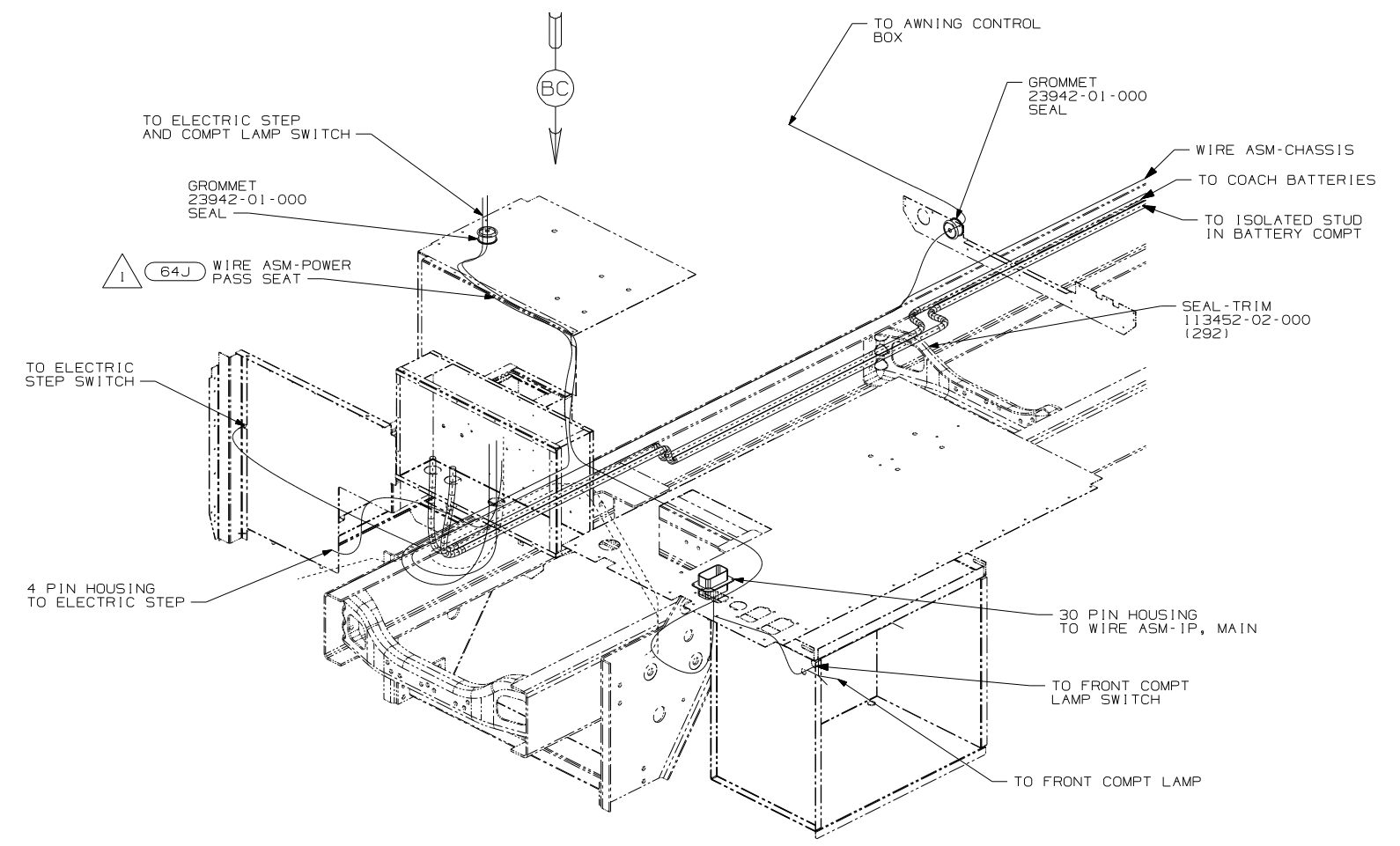
FOR ELECTRICAL CALLOUTS SEE DWG NO. 121339-01-000

- 64J SEAT PED-6-WAY DR/PASS POWER
- 670 GEN-7.5KW-ONAN-QUIET DIESEL
- 265 CODES/STANDARDS-CSA/CMVSS
- 1B1 CODES/STANDARDS USA

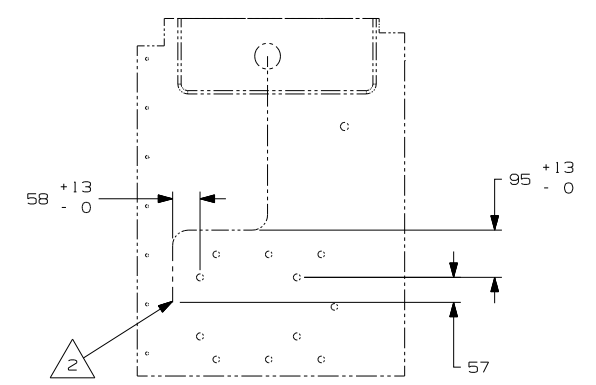
<b>WINNEBAGO</b>		COPYRIGHT 2006 WINNEBAGO INDUSTRIES, INC.	
DFTR	ORIG. DATE	ALL DIMENSIONS ARE IN MILLIMETERS	
CHKR		FIRST USED <b>06 P32T</b>	
P.E.		UNSPECIFIED TOLERANCES ARE:	
M.E.		WHOLE DIM (X)	:
DSNR		ONE-PLACE (X.X)	:
		TWO-PLACE (X.XX)	:
		ANGLE	:
THIRD ANGLE PROJECTION		MATERIAL:	
<b>DO NOT SCALE DRAWING</b>			
TITLE: <b>WIRING INSTL-CHASSIS</b>			
SHEET 1 OF 3	PART NO	REV	
	<b>155457</b>		
REF:	<b>1 6/16/2006</b>		



VIEW BB



VIEW BA



VIEW BC (64J)

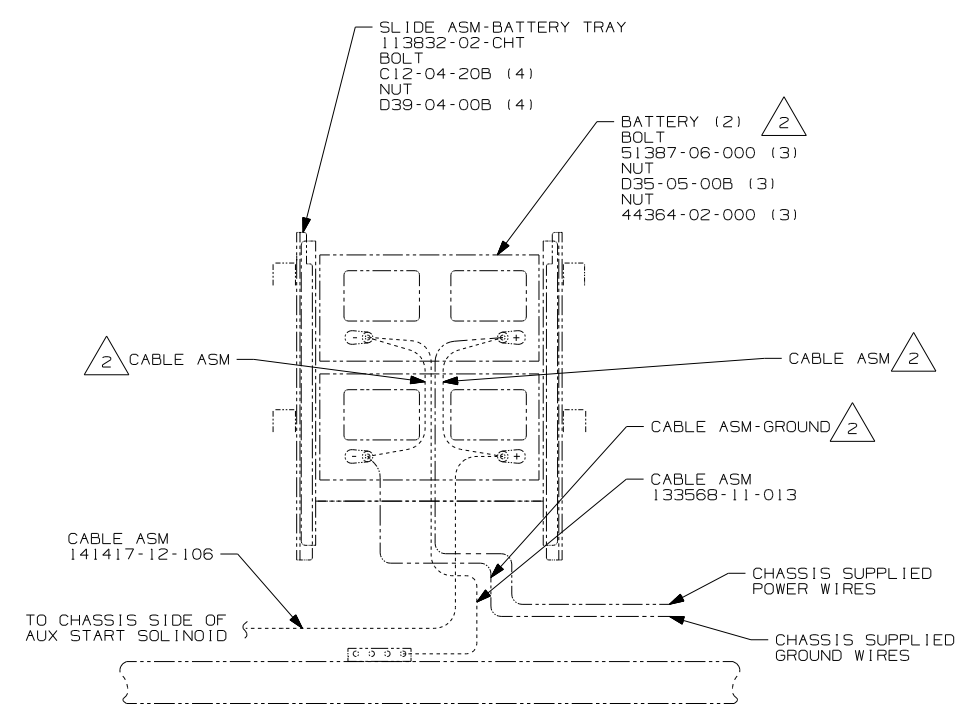
- NOTES:
- 3 ATTACH TO SEAL PANEL.
  - 2 LEAVE 675 ± 50MM OF WIRE AT END POINT OF PATH.
  - 1 SEE WIRING INSTL-FRONT END FOR ADDITIONAL INFORMATION.

- 64J SEAT PED-6-WAY DR/PASS POWER
- 265 CODES/STANDARDS-CSA/CMVSS
- 1B1 CODES/STANDARDS USA

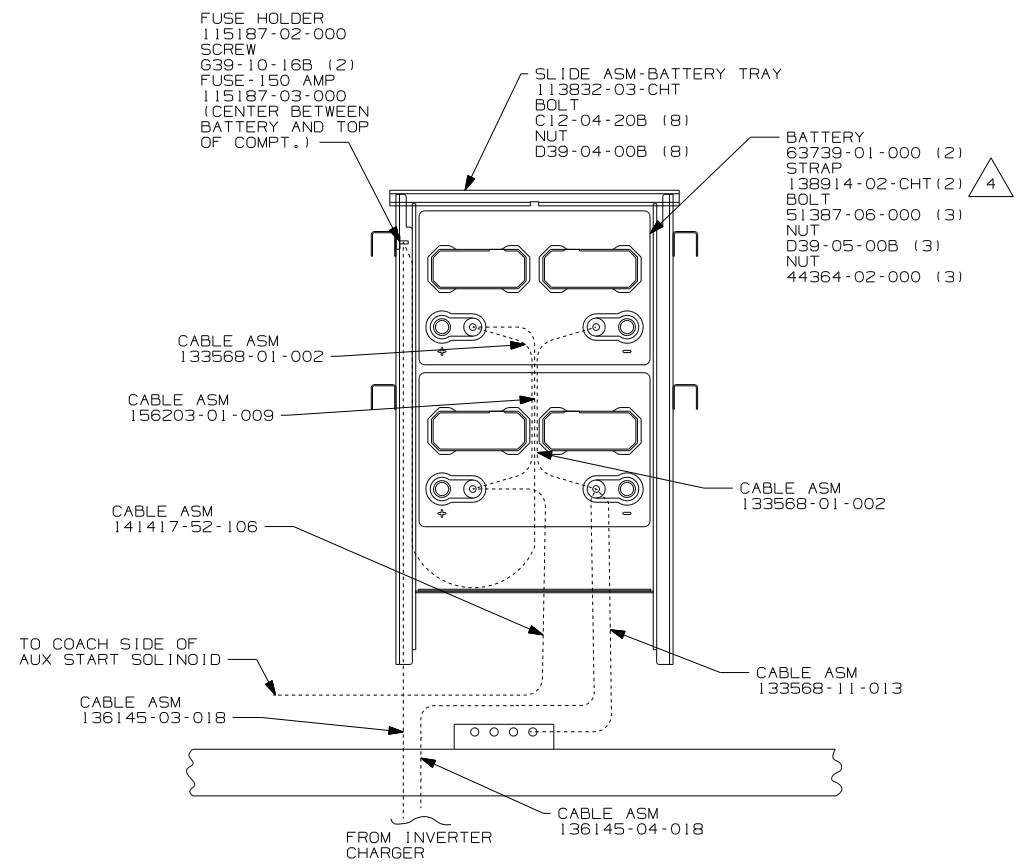
FIRST USED	06 P32T
TITLE	DO NOT SCALE DRAWING
SHEET 2	WIRING INSTL-CHASSIS
PART NO	155457
REV	

FOR ELECTRICAL TORQUE SPECIFICATIONS SEE DWG NO. 128783-01-000

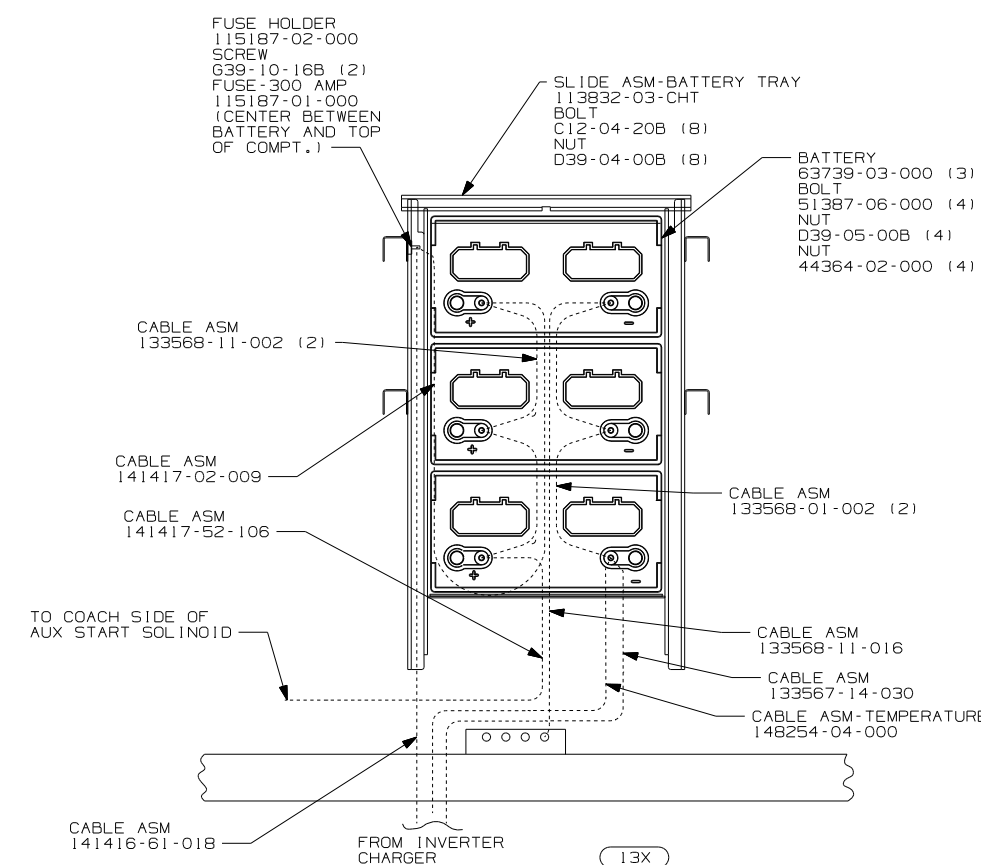
FOR ELECTRICAL CALLOUTS SEE DWG NO. 121339-01-000



DETAIL CA  
(COACH BATTERIES  
NOT SHOWN)



DETAIL CA  
(CHASSIS BATTERIES  
NOT SHOWN)



DETAIL CA  
(CHASSIS BATTERIES  
NOT SHOWN)

- $\Delta$ 4 DISCARD BATTERY STRAPS SUPPLIED W/ BATTERY TRAY
- $\Delta$ 3 CONNECT RING TERMINAL OF CABLE ASM-TEMP, BATTERY TO NEGATIVE POST AS SHOWN AND ROUTE CABLE WITH NEGATIVE BATTERY CABLE TO INVERTER.
- $\Delta$ 2 SUPPLIED WITH CHASSIS

1. LEGEND: — WINNEBAGO; ..... CABLE; - - - - - CHASSIS SUPPLIED WIRING.

NOTES:

FOR ELECTRICAL  
TORQUE  
SPECIFICATIONS  
SEE DWG NO.  
128783-01-000

FOR  
ELECTRICAL  
CALLOUTS  
SEE DWG NO.  
121339-01-000

- $\Delta$ 40D INVERTER-DC/AC, 600 WATT
- $\Delta$ 13X INVERTER/CHARGER 2.0 KW
- $\Delta$ 265 CODES/STANDARDS-CSA/CMVSS
- $\Delta$ 1B1 CODES/STANDARDS USA

FIRST USED	06 P32T
TITLE:	DO NOT SCALE DRAWING
	WIRING INSTL-CHASSIS
SHEET 3	PART NO 155457 REV