



**DANGER**

**Danger of electrical shock, burns or death.** Always remove all power sources before attempting any repair, service or diagnostic work. Power can be present from shore power, generator, inverter or battery. All power sources must be disabled and secured before performing any service.

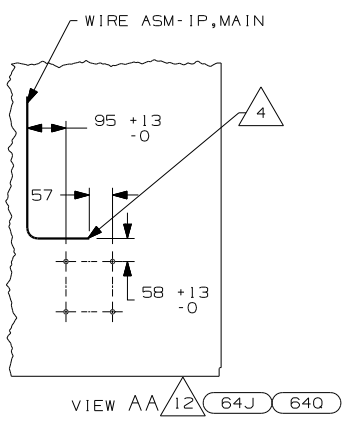
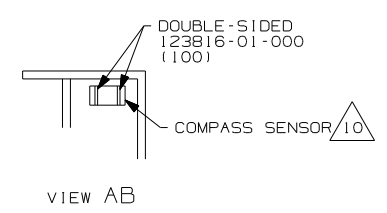


**CAUTION**

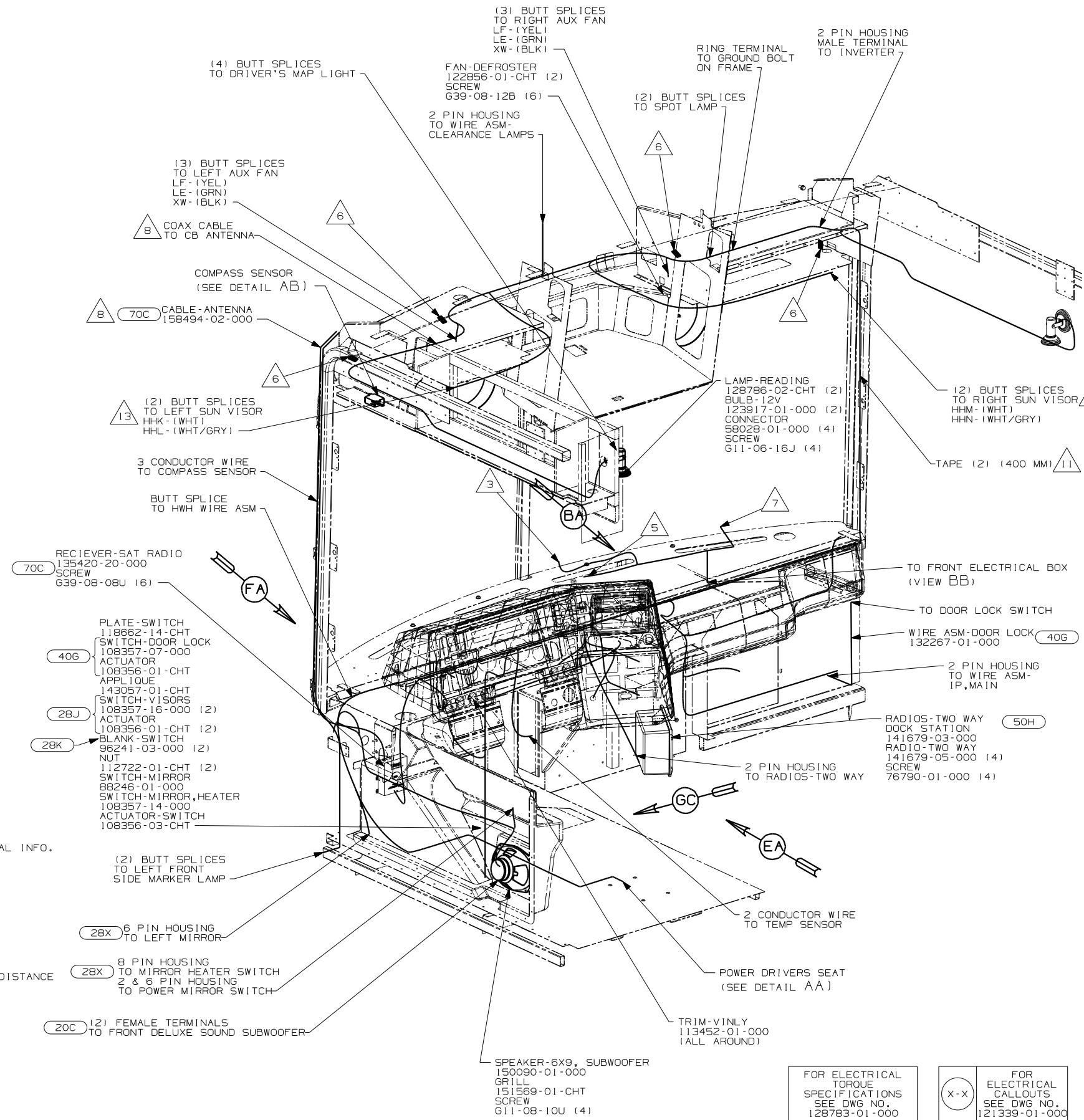
If you lack the skills, tools or equipment to perform diagnostic or repair work leave such work to an authorized Winnebago Industries dealer or other qualified shop.

DRAWING NO.	FEATURE
152098-01	(WIN)
152098-02	(ITA)

RELEASE	REV/DATE	DWG NO
	A	152098
REV ZONE	REVISION RECORD	DATE
		DFTR-016



- 14. CABLE SUPPLIED WITH SATELLITE RADIO RECIEVER. PLUG INTO BACK OF RADIO AND TIE TO IP,MAIN.
  - 13. CUT VISOR WIRING TO 300MM BEFORE CONNECTING.
  - 12. WITHOUT (64J) OR (64Q), COIL WIRE AND TIE BACK WITH MAIN LOOM.
  - 11. USE TAPE 136748-01-000 TO SECURE WIRES IN A-POST.
  - 10. MOUNT SENSOR WITH DOUBLE SIDED TAPE IN BOTTOM OF SIDE OVHD SO THAT SENSOR FACES FORWARD AS STATED ON SENSOR LABEL.
  - 8. SEE ANTENNA INSTL-CB FOR ADDITIONAL INFORMATION..
  - 7. ROUTE WASHER BOTTLE WIRE TOGETHER WITH HEATER CONTROL WIRES THROUGH HOLE IN STEEL ABOVE AND RIGHT OF ENGINE. USE GROMMET 23942-01-000. SEE SHT 14 & 15 FOR ADDITIONAL INFO.
  - 6. USE TIE WIRE MOUNT 92901-01-000 AND TIE-WIRE 93147-01-000 TO SECURE WIRE ASM-IP,MAIN.
  - 5. USE TAPE 8363-01-000 TO SECURE WIRE ASM-IP,MAIN CHASSIS SUPPLIED WIRE ASM-IP, CRUISE WIRING AND HEATER A/C WIRES TOGETHER EVERY 300 IN THIS AREA AFTER ROUTING AND MAKING ALL CONNECTIONS.
  - 4. WIRE ASM MAY BE ROUTED ON EITHER SIDE OF HOLE PATTERN DISTANCE SHOWN AT END POINT OF PATH. LEAVE 675± 50MM OF WIRE.
  - 3. ROUTE WIPER MOTOR WIRING THROUGH HOLE IN BULKHEAD ABOVE & LEFT OF ENGINE. USE GROMMET 88756-01-000. SEE SHT 14 & 15 FOR ADDITIONAL INFORMATION.
2. USE SEAL-TRIM 113452-01-000 TO PROTECT WIRES FROM SHARP EDGES.
1. FOR ADDITIONAL INFORMATION SEE WIRING INSTL-CHASSIS.



- (70C) RADIO - SATELLITE
- (64Q) SEAT PED-6-WAY POWER DRIVER
- (64J) SEAT PED-6-WAY DR/PASS POWER
- (50H) RADIOS TWO-WAY (4)
- (40G) POWER DOOR LOCK WITH REMOTE
- (36N) FANS-DEFROSTER, AUXILLARY
- (28X) MIRRORS-EXTERIOR W/DEFROST
- (28K) SUNVISORS - MANUAL (2)
- (28J) SUNVISORS - POWERED (2)

**WINNEBAGO** COPYRIGHT 2004 WINNEBAGO INDUSTRIES, INC.

DFTR	ORIG. DATE
CHKR	ALL DIMENSIONS ARE IN MILLIMETERS
P.E.	FIRST USED
M.E.	06 P-SER
DSNR	

UNSPECIFIED TOLERANCES ARE: MATERIAL:

HOLE DIM (X)	:
ONE-PLACE (X.X)	:
TWO-PLACE (X.XX)	:
ANGLE	:

THIRD ANGLE PROJECTION

**DO NOT SCALE DRAWING**

TITLE: WIRING INSTL-FRONT END

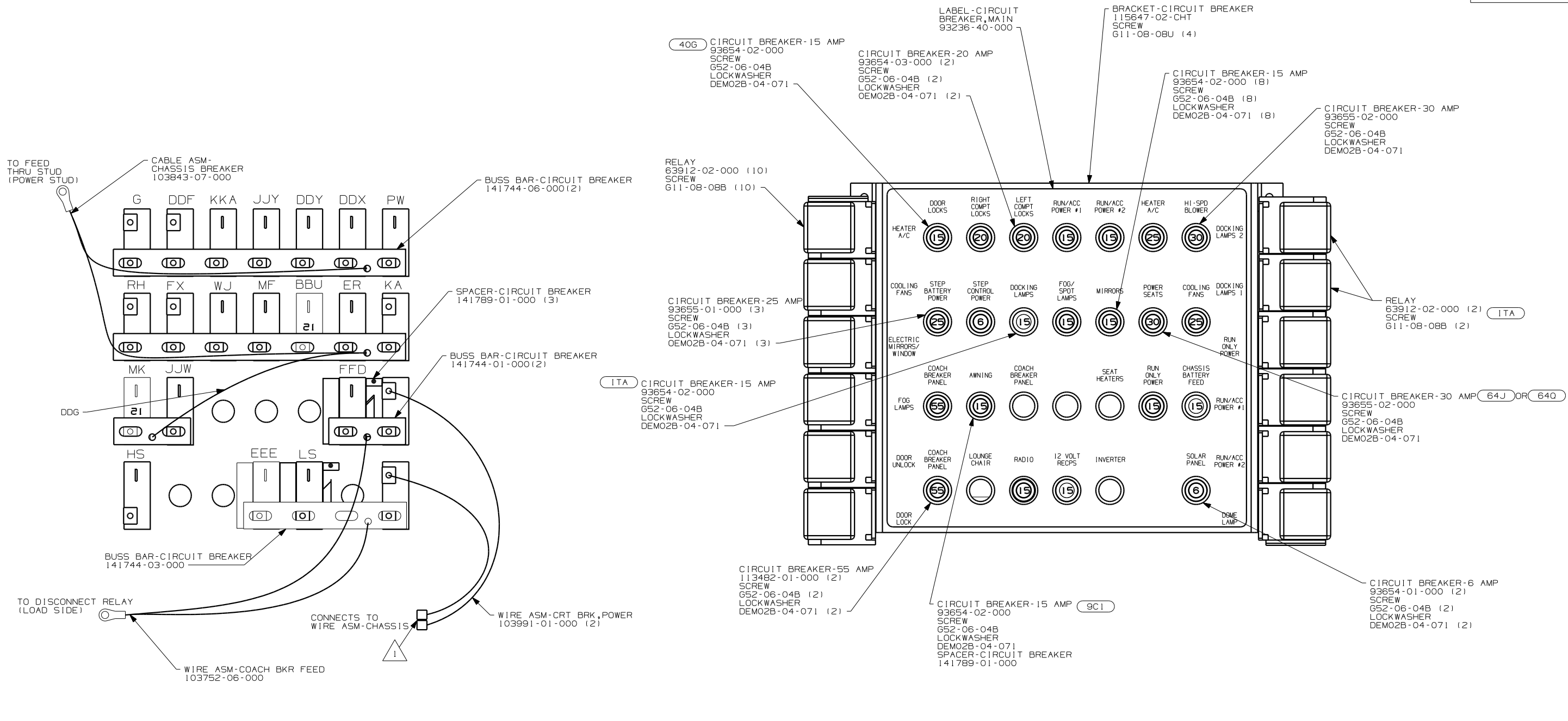
SHEET 1 OF 8 PART NO. 152098

REF: 1 11/2/2005

FOR ELECTRICAL TORQUE SPECIFICATIONS SEE DWG NO. 128783-01-000

FOR ELECTRICAL CALLOUTS SEE DWG NO. 121339-01-000





- (ITA) ITASCA ONLY
- (64J) SEAT PED-6-WAY DR/PASS POWER
- (64Q) SEAT PED-6-WAY POWER DRIVER
- (63F) AWNING-ENTRANCE DOOR
- (40G) POWER DOOR LOCK WITH REMOTE
- (40B) INVERTER-DC/AC, 300 WATT
- (28X) MIRRORS-EXTERIOR W/DEFROST
- (9C1) AWNING-ELECTRIC PACKAGE

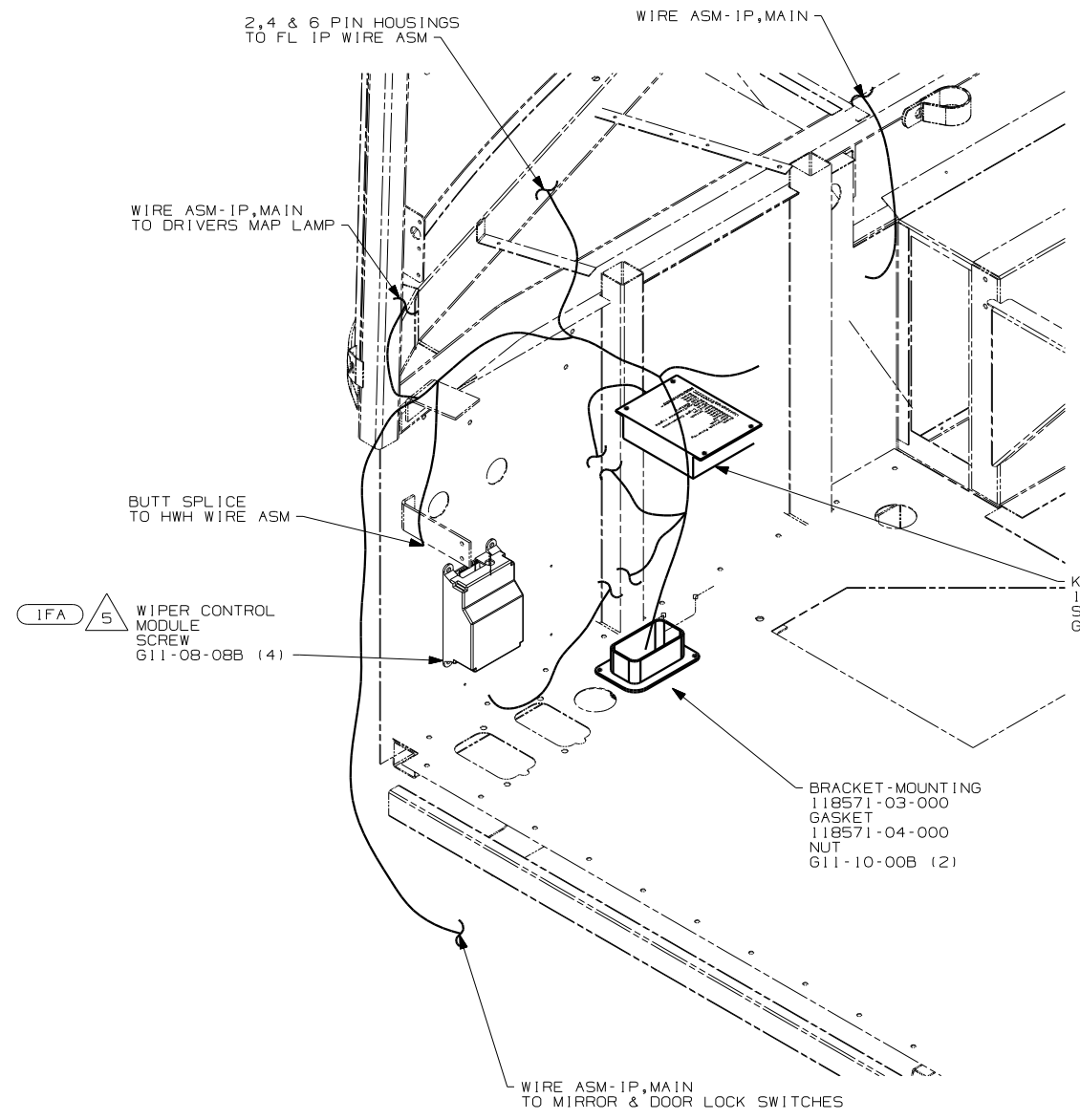
NOTES:

- △ 2 CIRCUITS LABELED ON BREAKER ARE FROM WIRE ASM-1P, MAIN UNLESS OTHERWISE NOTED.
- △ 1 CONNECT HOUSINGS TOGETHER.

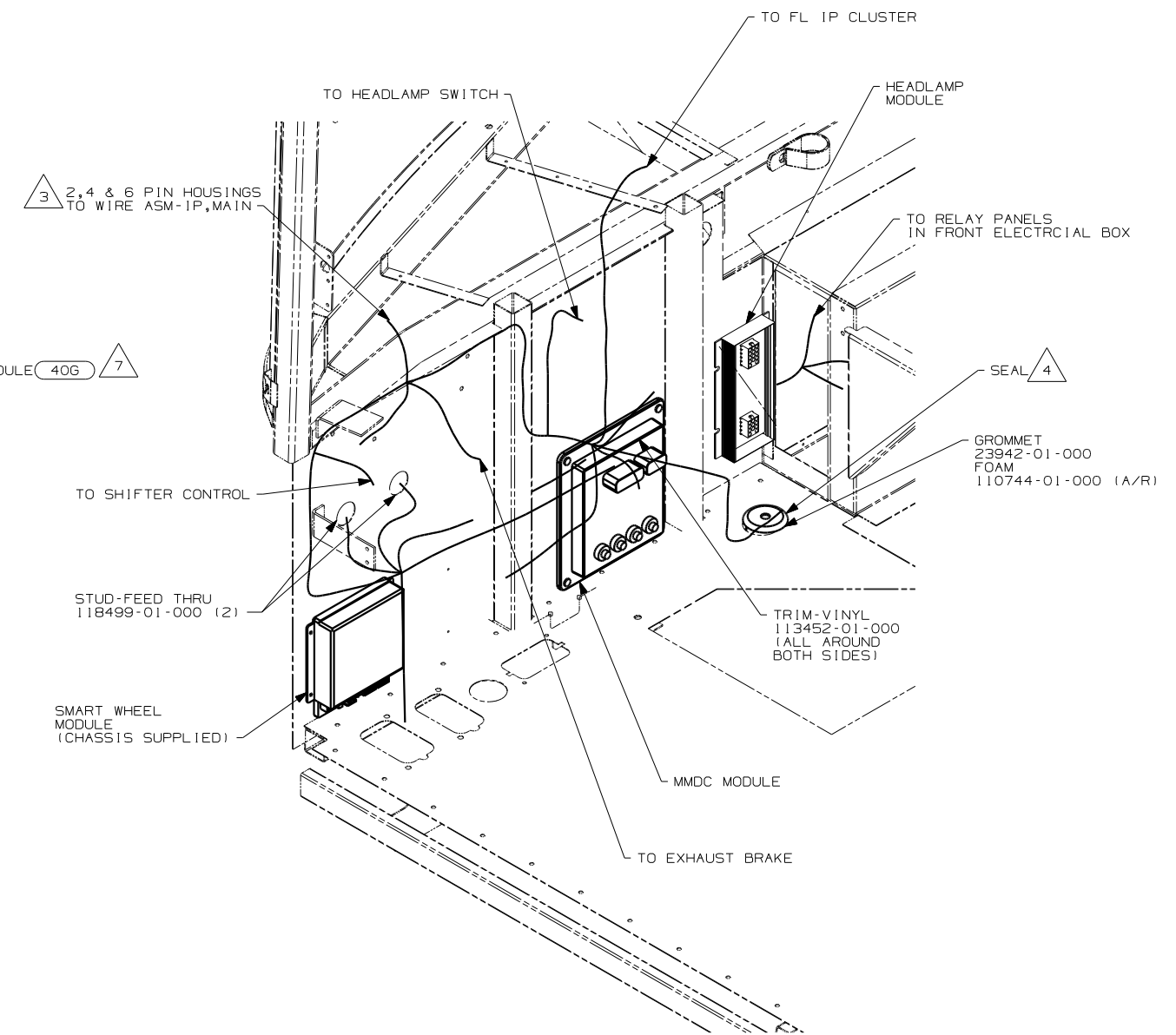
FOR ELECTRICAL TORQUE SPECIFICATIONS SEE DWG NO. 128783-01-000

FOR ELECTRICAL CALLOUTS SEE DWG NO. 121339-01-000

FIRST USED	06 P-SER
TITLE	DO NOT SCALE DRAWING
TITLE	WIRING INSTL-FRONT END
SHEET 3	PART NO 152098



VIEW DA (WINNEBAGO WIRING SHOWN)



VIEW DA (CHASSIS WIRING SHOWN)

- 7 MOUNT TO PLENUM PANEL AS SHOWN.
- 6 PUT 1 SEAL IN FRONT OF HOLE AT CAB PREP.
- 5 SEE WIPER CONTROL INFORMATION FOR INSTALLATION INSTRUCTION.
- 4 ROUTE PARK BRAKE VALVE AND AIR LINES FOR DASH GAUGES THRU HERE. COVER WITH CONVOLUTE TUBING 41953 WHERE VISIBLE.
- 3 DO NOT USE SEAT BELT 2 PIN HOUSING.
- 2 FL IP WIRE ASM SHOULD BE TIED PRIOR TO INSTALLATION. SEE DETAIL HA FOR TYING INSTRUCTIONS.

1. BUNDLE AND SECURE ALL EXCESS WIRE.

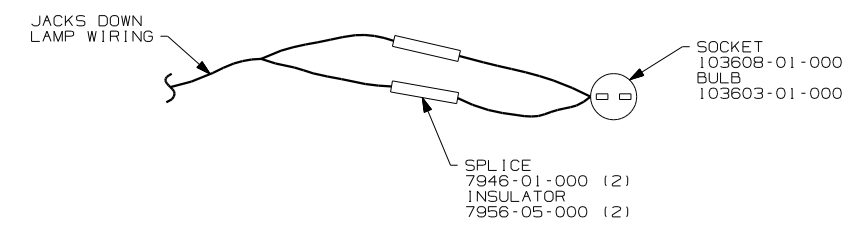
NOTES:

- 40G POWER DOOR LOCK WITH REMOTE
- 265 CODES/STANDARDS-CSA/CMVSS

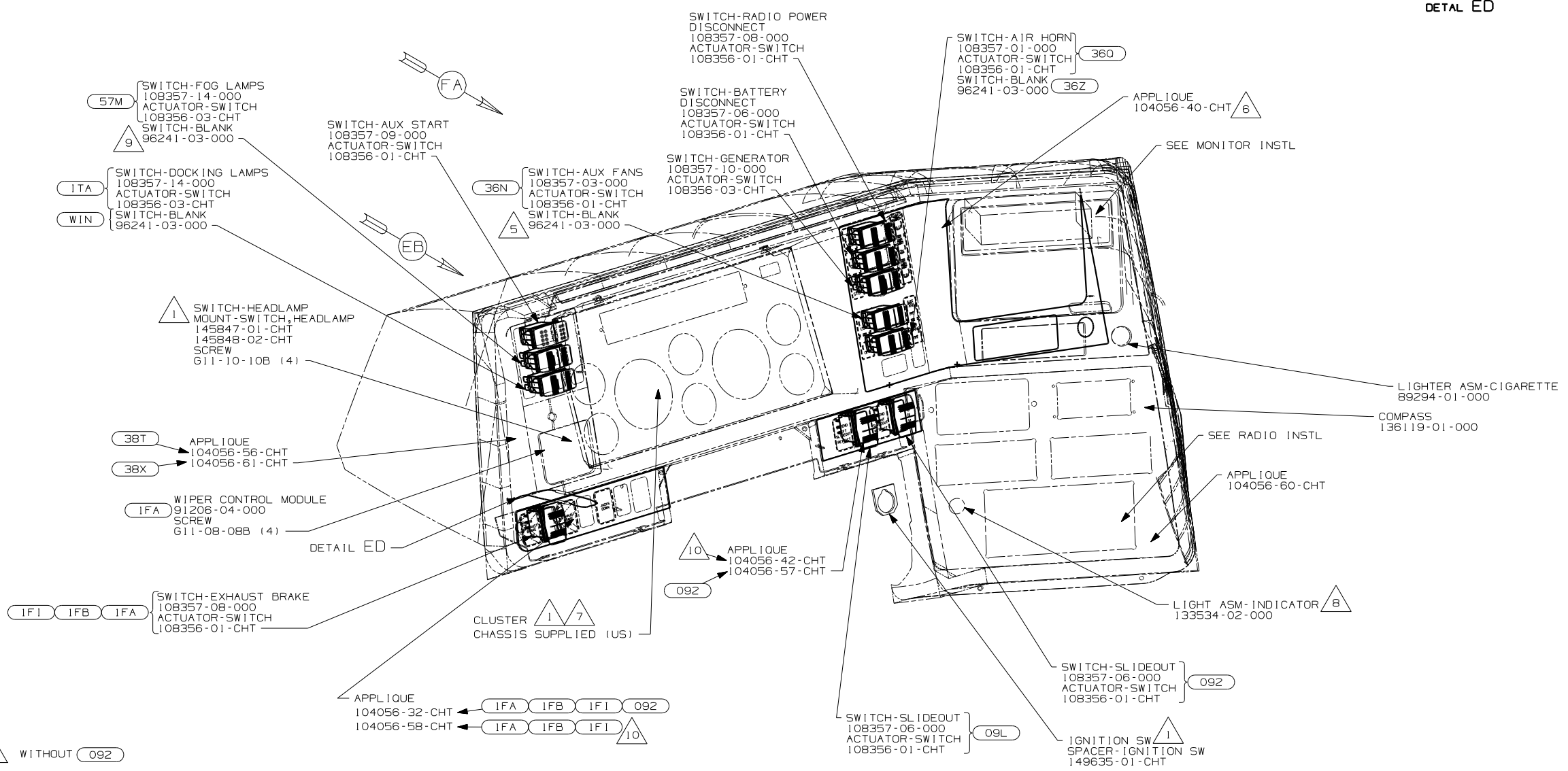
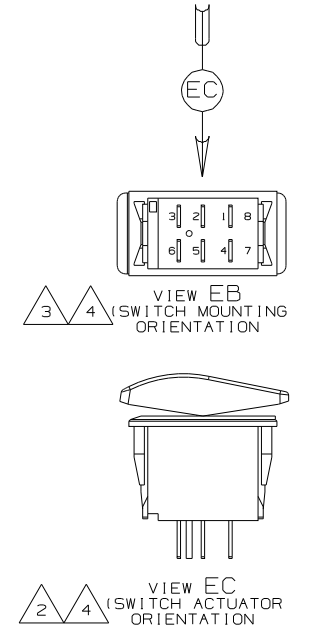
FOR ELECTRICAL TORQUE SPECIFICATIONS SEE DWG NO. 128783-01-000

FOR ELECTRICAL CALLOUTS SEE DWG NO. 121339-01-000

FIRST USED	
06 P-SER	
DO NOT SCALE DRAWING	
TITLE: WIRING INSTL-FRONT END	
SHEET 4	PART NO 152098



DETAIL ED



DETAIL EA

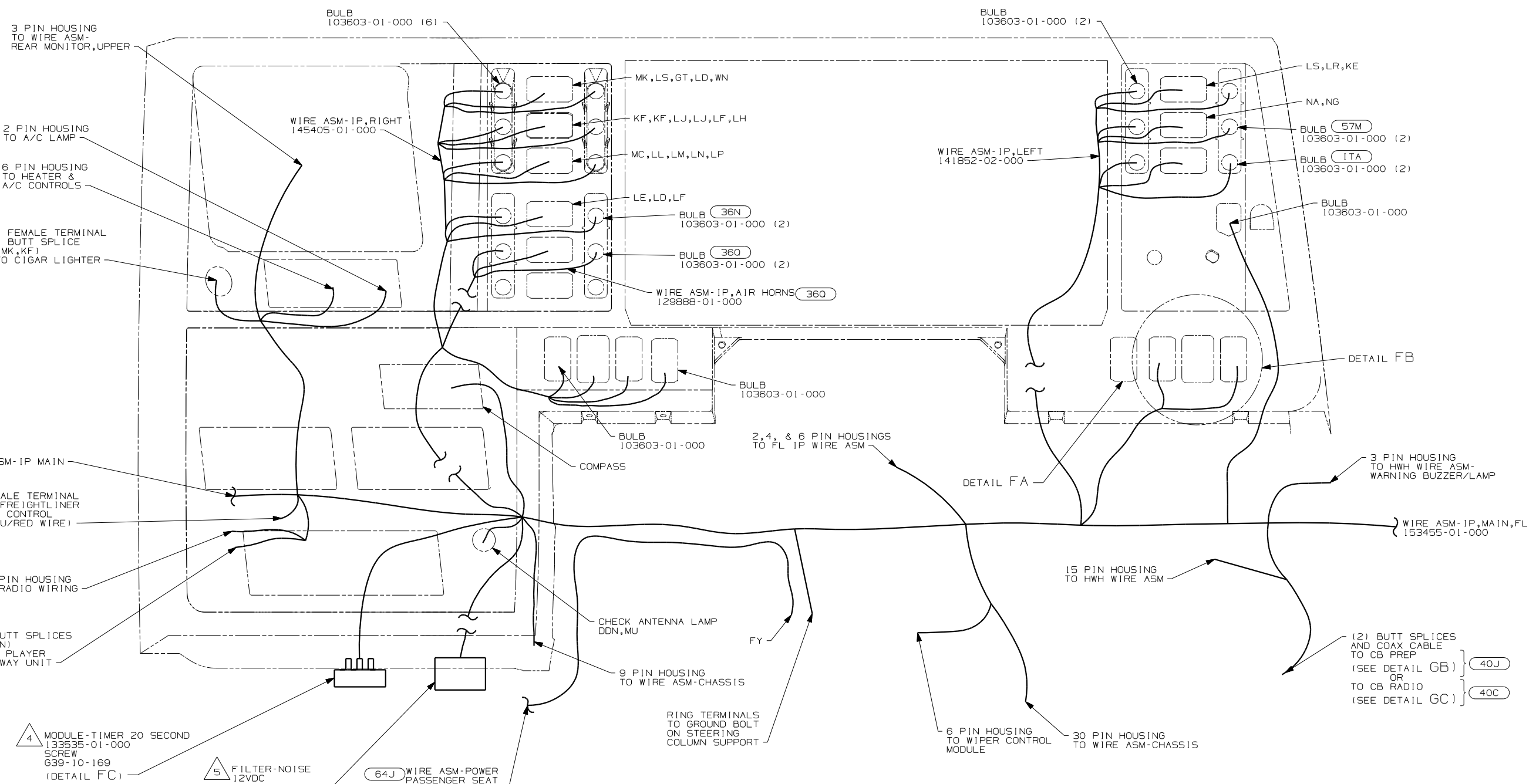
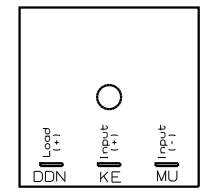
- (57M) LAMPS-FOG
- (38X) STEERING WHEEL-VINYL WRAPPED
- (38T) STEERING WHEEL-SMART WHEEL
- (360) AIR HORNS-CHROME
- (36Z) AIR HORNS - WITHOUT
- (36N) FANS-DEFROSTER, AUXILIARY
- (IF1) FRTL 27,910 350HP 7.2L 6SPD
- (IFB) FRTL 300HP 5.9L 6SPD AL WHLS
- (IFA) FRTL 27,910 300 5.9L 5-SP
- (092) SLIDEOUT ROOM - FRONT RIGHT
- (09L) SLIDEOUT ROOM FRONT LEFT
- (WIN) WINNEBAGO ONLY
- (ITA) ITASCA ONLY

- 10 WITHOUT (092)
- 9 WITHOUT (57M)
- 8 DRILL 19.0 DIAMETER HOLE AT LOWER DIMPLE LOCATIONL.
- 7 SEE DETAIL GA FOR INSTRUMENT CLUSTER ASSEMBLY INSTRUCTIONS.
- 6 COVER CLEAR LEGEND ON BEZEL WITH FILM 77031-01-000 (BLANK).
- 5 WITHOUT (36N)
- 4 SWITCHES SHOWN WITHOUT WIRE ASM-HOUSING CONNECTED.
- 3 SAME FOR ALL DASH SWITCHES EXCEPT FOG LAMPS, DOCKING LAMPS AND GENERATOR SWITCHES.
- 2 SAME FOR ALL SWITCHES.
- 1 CHASSIS SUPPLIED.

NOTES:

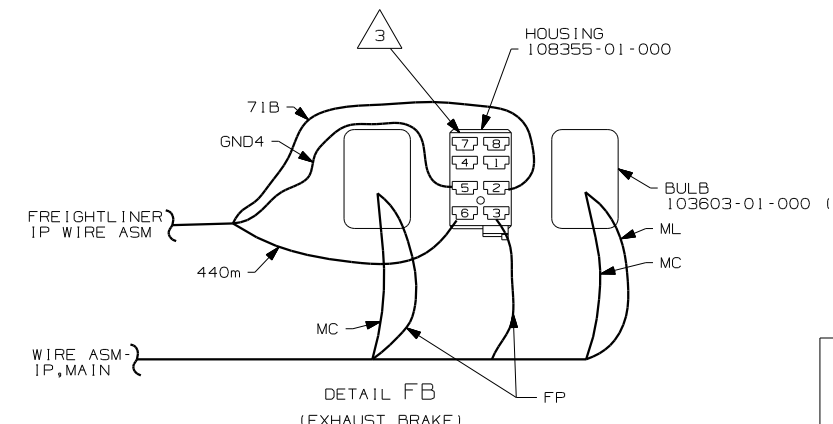
X-X  
FOR ELECTRICAL CALLOUTS SEE DWG NO. 121339-01-000

FIRST USED	
06 P-SER	
DO NOT SCALE DRAWING	
TITLE: WIRING INSTL-FRONT END	
SHEET 5	PART NO 152098



- 6. TAPE SLIDER ROOM #3 SWITCH BACK INTO LOOM WITH (092).
- 5. MOUNT ON TOP LEFT REAR CORNER OF PANEL-COVER, RADIATOR.
- 4. MOUNT ON TOP LEFT REAR CORNER OF PANEL-COVER, RADIATOR.
- 3. UNHOUSE EXHAUST BRAKE SWITCH HOUSING ON CHASSIS IP WIRE ASM. THEN REHOUSE TERMINALS IN HOUSING AS SHOWN.
- 2. CUT TERMINALS OFF FL WIRE ASSEMBLY AND BUTT SPLICE.
- 1. CHASSIS SUPPLIED.

NOTES:

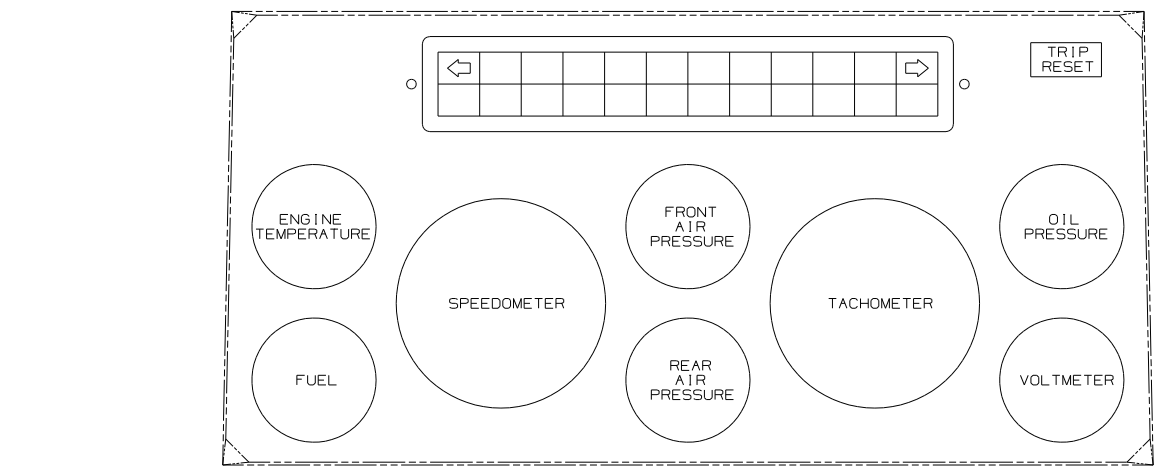
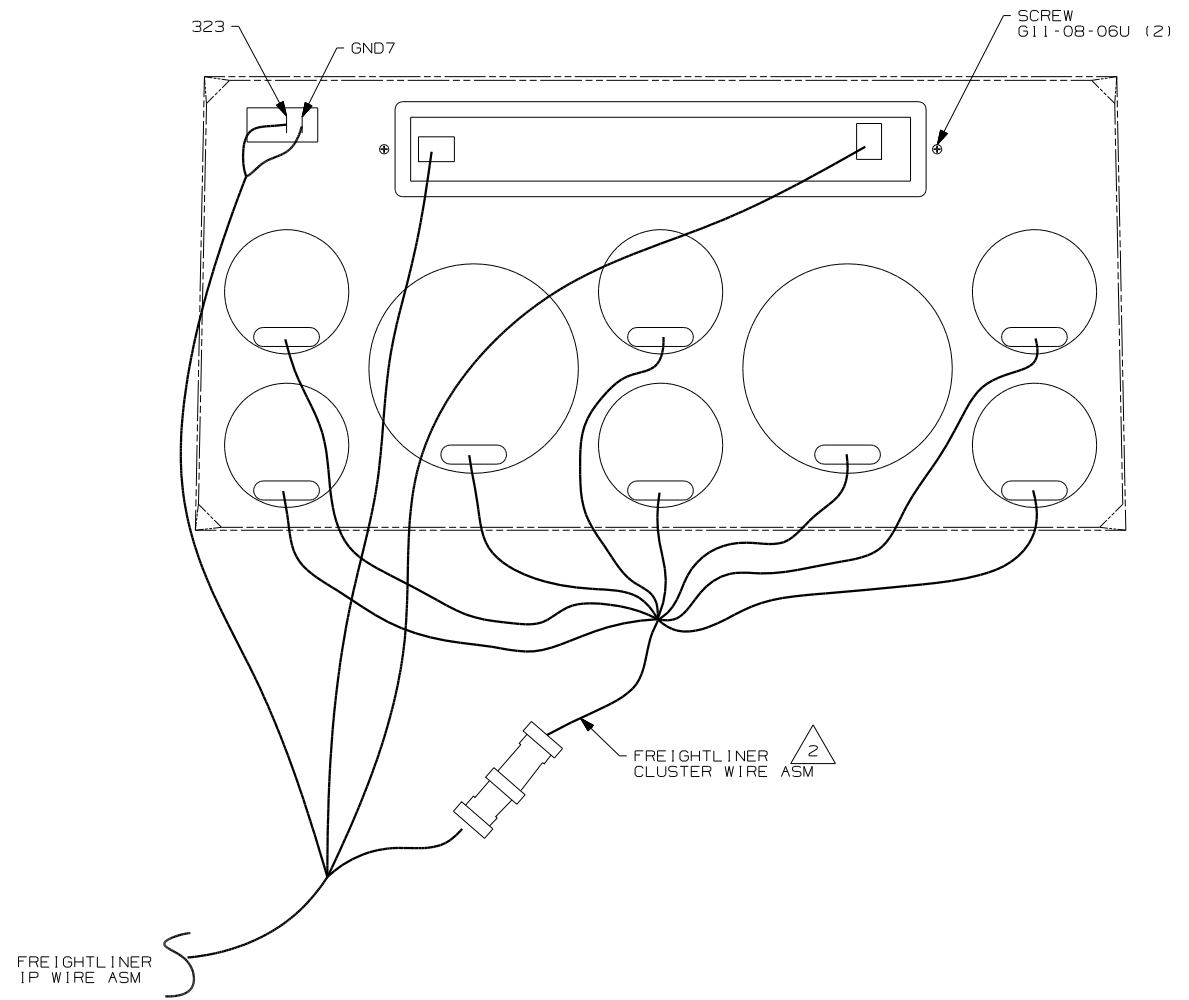


- (64J) SEAT PED-6-WAY DR/PASS POWER
- (57M) LAMPS-FOG
- (40J) CB RADIO PREP
- (40C) RADIO - CB
- (360) AIR HORNS-CHROME
- (36N) FANS-DEFROSTER, AUXILIARY
- (092) SLIDEOUT ROOM - FRONT RIGHT
- (ITA) ITASCA ONLY

FOR ELECTRICAL TORQUE SPECIFICATIONS SEE DWG NO. 128783-01-000

FOR ELECTRICAL CALLOUTS SEE DWG NO. 121339-01-000

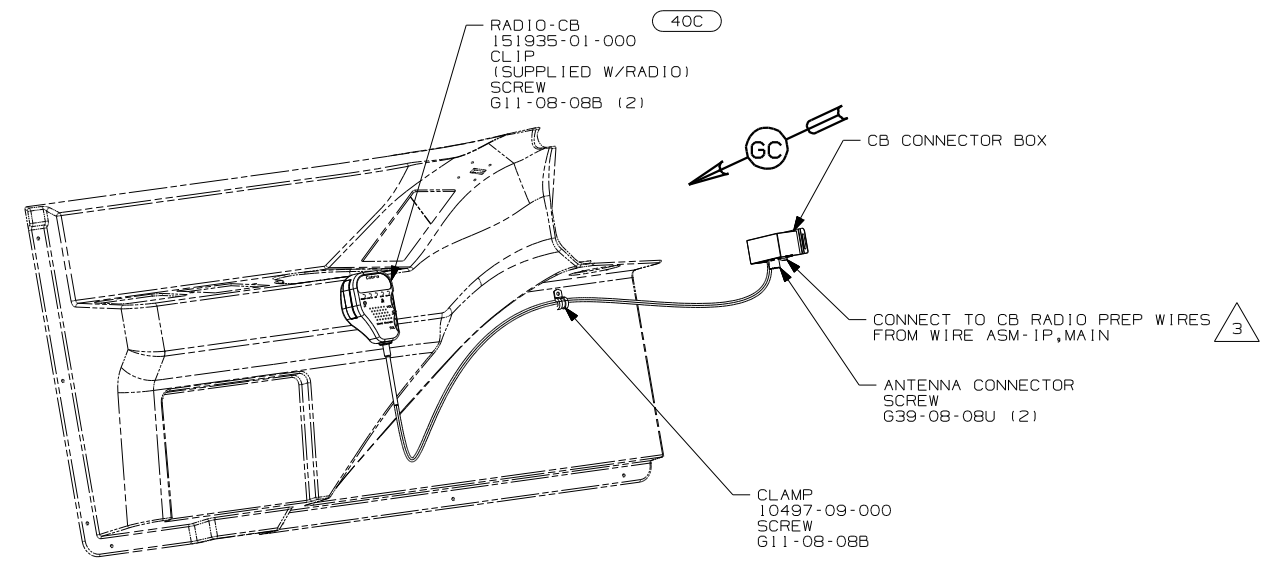
FIRST USED	06 P-SER
TITLE	DO NOT SCALE DRAWING
TITLE	WIRING INSTL-FRONT END
SHEET 6	PART NO 152098



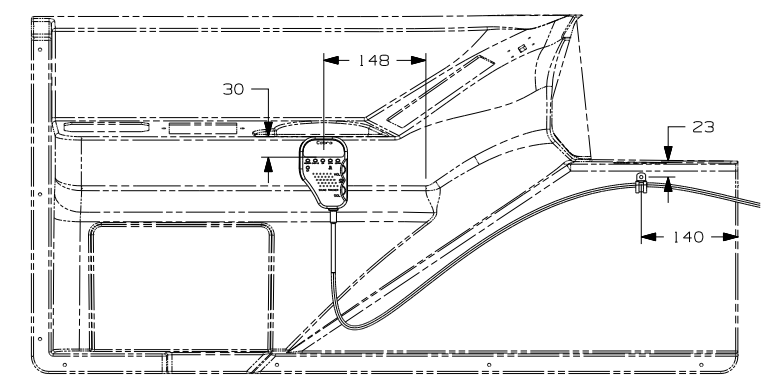
DETAIL GA

3 CONNECT RED FROM CONNECTOR TO YELLOW IN IP,MAIN AND BLK/RED TO WHITE.  
 2 ANY PLUG ON CLUSTER WIRE ASM WILL FIT ANY GAUGE.  
 1. ALL GAUGES, RETAINER CLIPS AND FASTENERS ARE CHASSIS SUPPLIED.

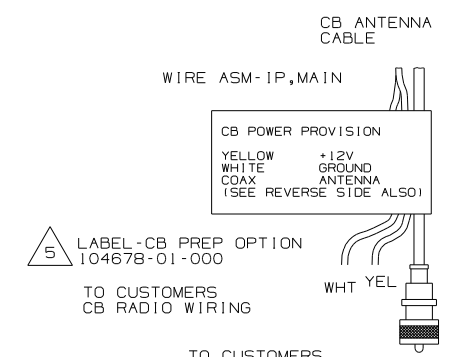
NOTES:



DETAIL GB 40C



DETAIL GC 40C

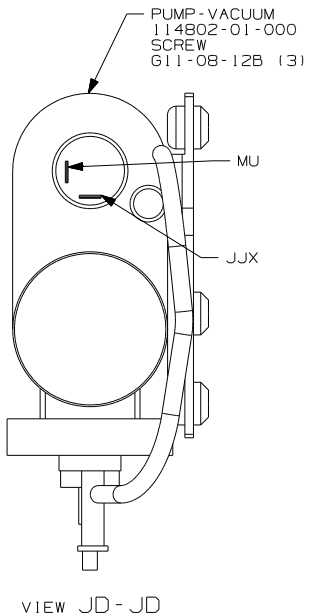
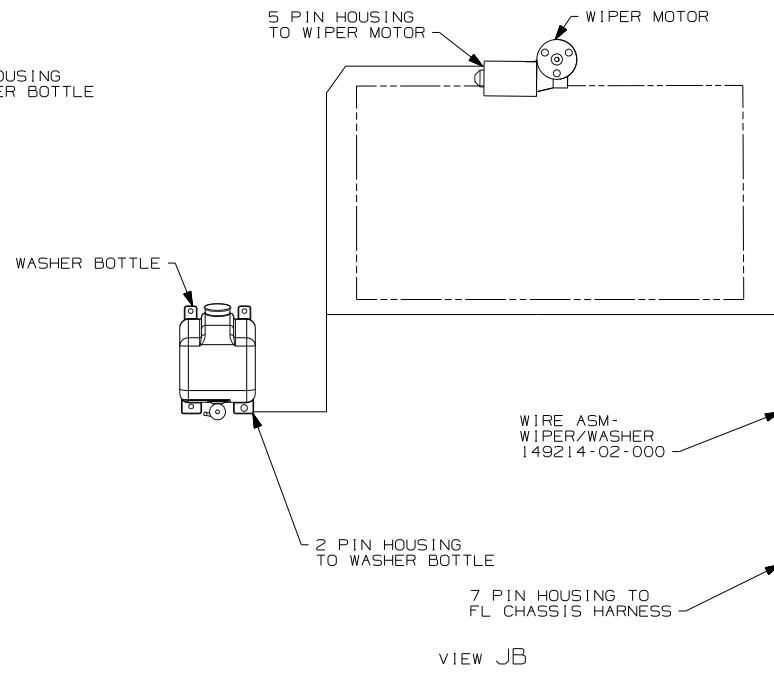
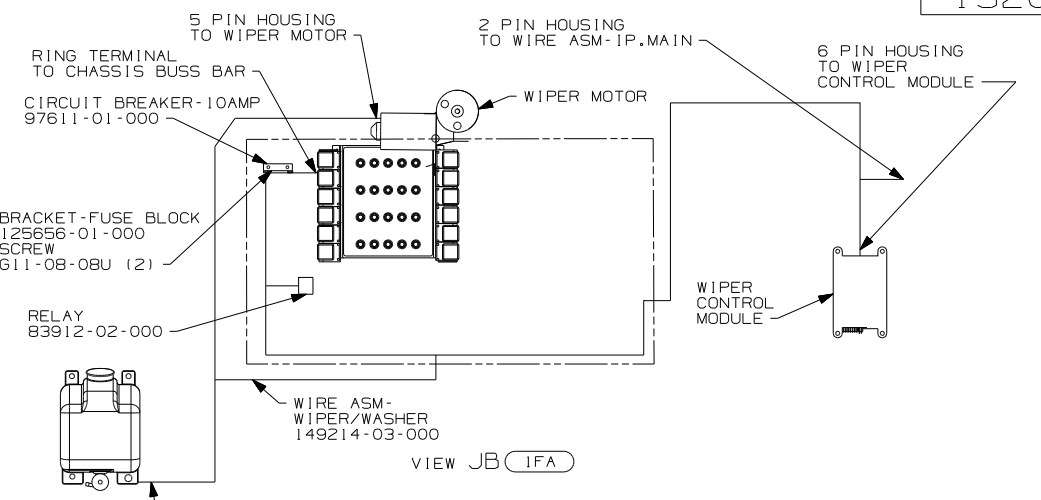
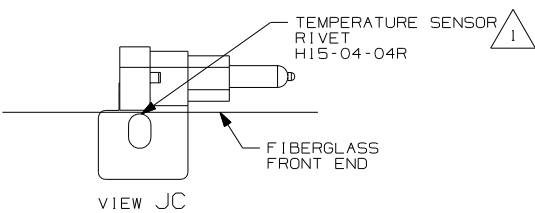
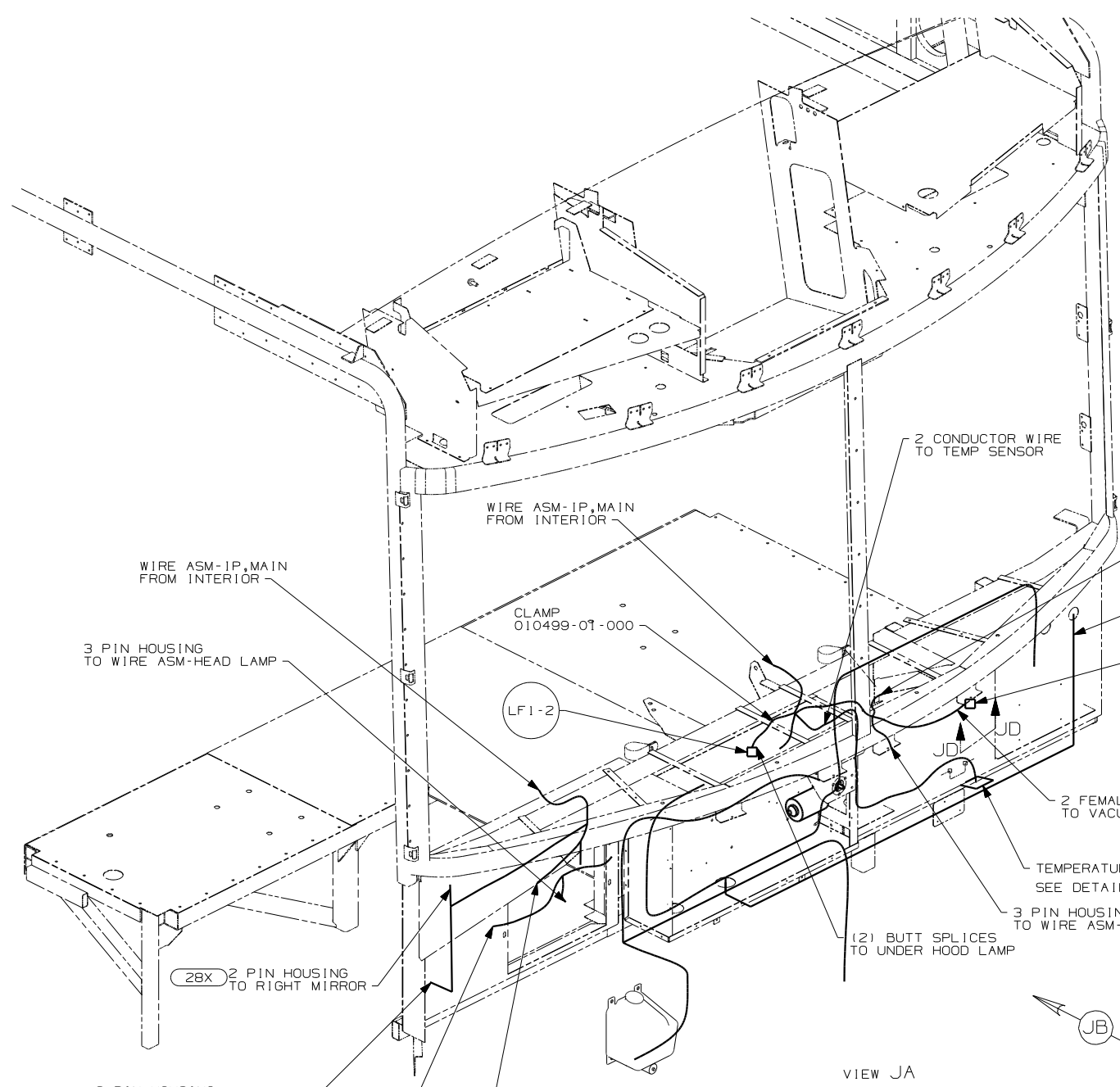


DETAIL GD 40J

40J CB RADIO PREP  
 40C RADIO - CB

FIRST USED	06 P-SER
TITLE	DO NOT SCALE DRAWING
	WIRING INSTL-FRONT END
SHEET 7	PART NO 152098





NOTES:  
 2 SEE SHEET 2 FOR ADDITIONAL INFORMATION.  
 1 DRILL 4.8 DIA HOLE AND MOUNT ON LOWER FLANGE OF FRONT END.

FOR ELECTRICAL TORQUE SPECIFICATIONS SEE DWG NO. 128783-01-000

FOR ELECTRICAL CALLOUTS SEE DWG NO. 121339-01-000

- (28X) MIRRORS-EXTERIOR W/DEFROST
- (1FI) FRTL 27,910 350HP 7.2L 6SPD
- (1FB) FRTL 300HP 5.9L 6SPD AL WHLS
- (1FA) FRTL 27,910 300 5.9L 5-SP

FIRST USED	
06 P-SER	
DO NOT SCALE DRAWING	
TITLE: WIRING INSTL-FRONT END	
SHEET 8	PART NO 152098