



**DANGER**

**Danger of electrical shock, burns or death.** Always remove all power sources before attempting any repair, service or diagnostic work. Power can be present from shore power, generator, inverter or battery. All power sources must be disabled and secured before performing any service.

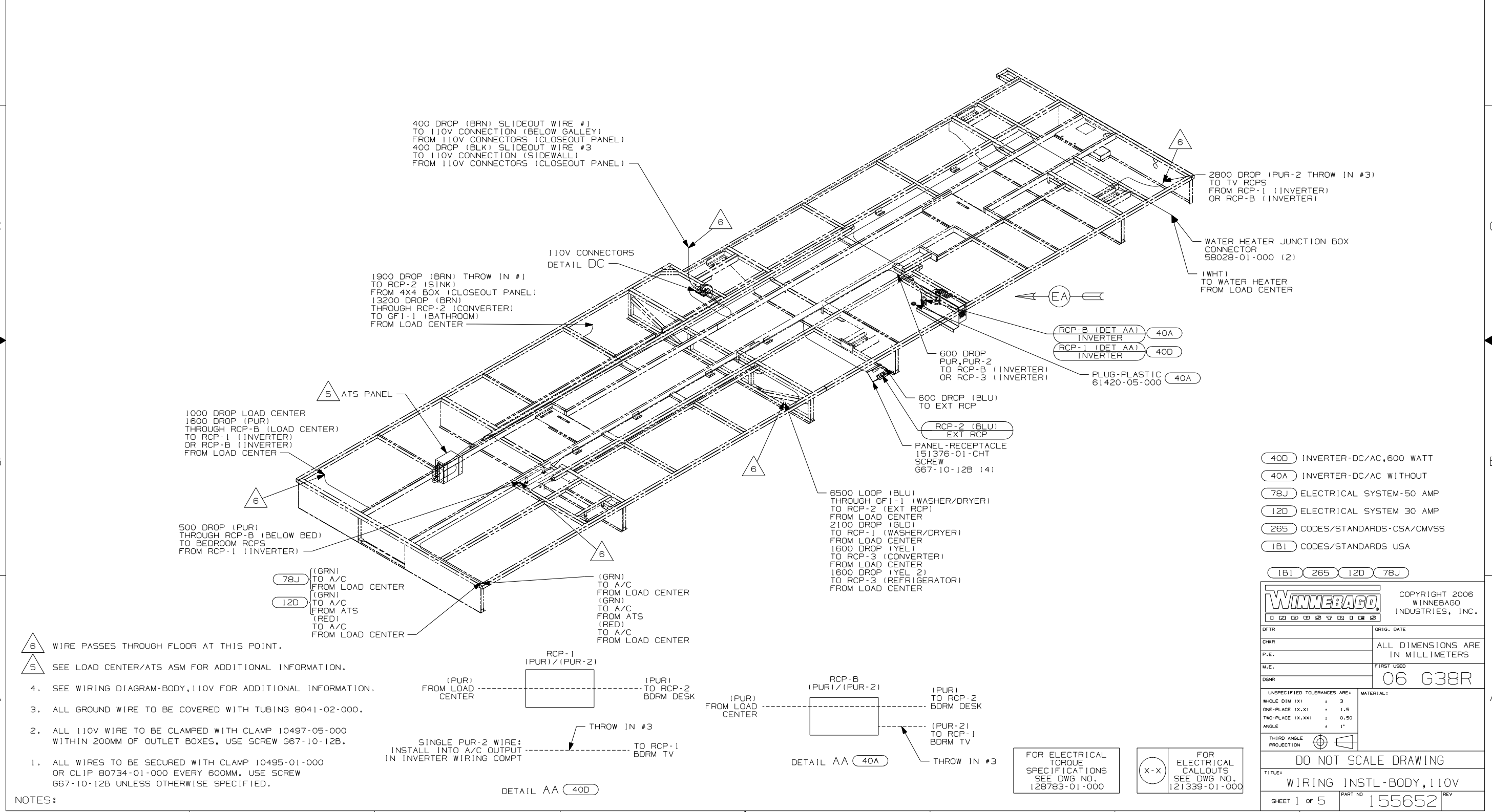


**CAUTION**

If you lack the skills, tools or equipment to perform diagnostic or repair work leave such work to an authorized Winnebago Industries dealer or other qualified shop.

DRAWING NO.	FEATURE
155652-01	-----
155652-11	(1B1) (12D)
155652-12	(1B1) (78J)
155652-15	(265) (12D)
155652-16	(265) (78J)

RELEASE	REV DATE	ORIG NO	155652
REV ZONE	REVISION RECORD	DATE	DFTR-016



400 DROP (BRN) SLIDEOUT WIRE #1  
TO 110V CONNECTION (BELOW GALLEY)  
FROM 110V CONNECTORS (CLOSEOUT PANEL)  
400 DROP (BLK) SLIDEOUT WIRE #3  
TO 110V CONNECTION (SIDEWALL)  
FROM 110V CONNECTORS (CLOSEOUT PANEL)

1900 DROP (BRN) THROW IN #1  
TO RCP-2 (SINK)  
FROM 4X4 BOX (CLOSEOUT PANEL)  
13200 DROP (BRN)  
THROUGH RCP-2 (CONVERTER)  
TO GF1-1 (BATHROOM)  
FROM LOAD CENTER

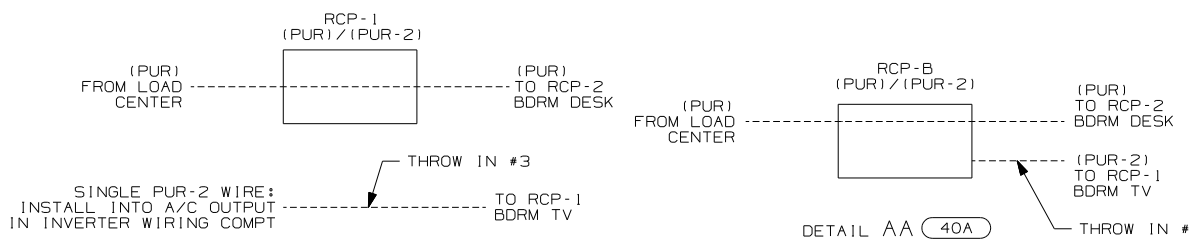
1000 DROP LOAD CENTER  
1600 DROP (PUR)  
THROUGH RCP-B (LOAD CENTER)  
TO RCP-1 (INVERTER)  
OR RCP-B (INVERTER)  
FROM LOAD CENTER

500 DROP (PUR)  
THROUGH RCP-B (BELOW BED)  
TO BEDROOM RCPS  
FROM RCP-1 (INVERTER)

(78J) (GRN)  
TO A/C  
FROM LOAD CENTER  
(12D) (GRN)  
TO A/C  
FROM ATS  
(RED)  
TO A/C  
FROM LOAD CENTER

(GRN)  
TO A/C  
FROM LOAD CENTER  
(GRN)  
TO A/C  
FROM ATS  
(RED)  
TO A/C  
FROM LOAD CENTER

- △ 6 WIRE PASSES THROUGH FLOOR AT THIS POINT.  
△ 5 SEE LOAD CENTER/ATS ASM FOR ADDITIONAL INFORMATION.
- SEE WIRING DIAGRAM-BODY, 110V FOR ADDITIONAL INFORMATION.
  - ALL GROUND WIRE TO BE COVERED WITH TUBING 8041-02-000.
  - ALL 110V WIRE TO BE CLAMPED WITH CLAMP 10497-05-000 WITHIN 200MM OF OUTLET BOXES, USE SCREW G67-10-12B.
  - ALL WIRES TO BE SECURED WITH CLAMP 10495-01-000 OR CLIP B0734-01-000 EVERY 600MM. USE SCREW G67-10-12B UNLESS OTHERWISE SPECIFIED.



FOR ELECTRICAL TORQUE SPECIFICATIONS SEE DWG NO. 128783-01-000

FOR ELECTRICAL CALLOUTS SEE DWG NO. 121339-01-000

- (40D) INVERTER-DC/AC, 600 WATT
- (40A) INVERTER-DC/AC WITHOUT
- (78J) ELECTRICAL SYSTEM-50 AMP
- (12D) ELECTRICAL SYSTEM 30 AMP
- (265) CODES/STANDARDS-CSA/CMVSS
- (1B1) CODES/STANDARDS USA

**WINNEBAGO** COPYRIGHT 2006 WINNEBAGO INDUSTRIES, INC.

DFTR	ORIG. DATE
CHKR	ALL DIMENSIONS ARE IN MILLIMETERS
P.E.	
M.E.	FIRST USED
DSNR	06 G38R

UNSPECIFIED TOLERANCES ARE: MATERIAL:

HOLE DIM (X)	: 3
ONE-PLACE (X, X)	: 1.5
TWO-PLACE (X, XX)	: 0.50
ANGLE	: 1°

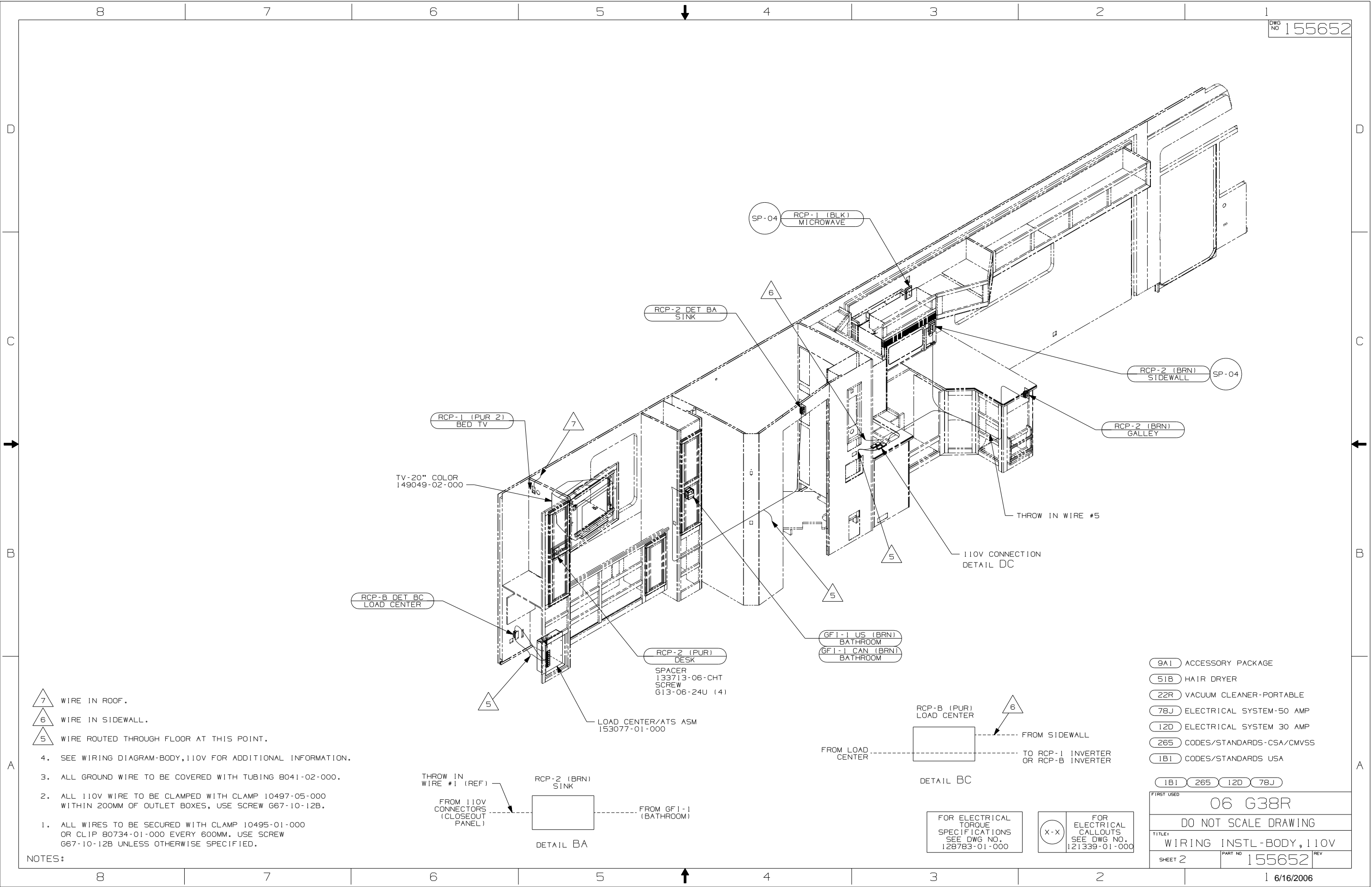
THIRD ANGLE PROJECTION

**DO NOT SCALE DRAWING**

TITLE: WIRING INSTL-BODY, 110V

SHEET 1 OF 5 PART NO. 155652 REV

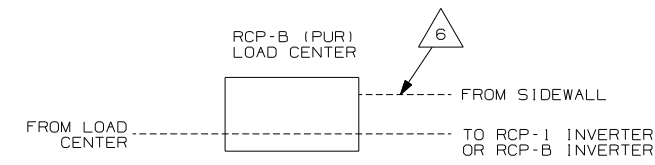
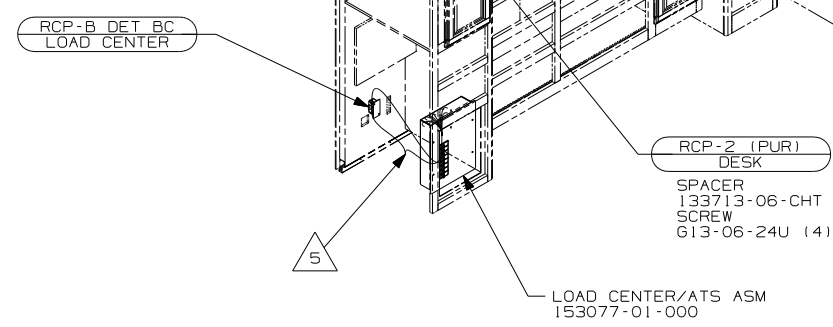
REF: 1 6/16/2006



- 7 WIRE IN ROOF.
- 6 WIRE IN SIDEWALL.
- 5 WIRE ROUTED THROUGH FLOOR AT THIS POINT.

4. SEE WIRING DIAGRAM-BODY, 110V FOR ADDITIONAL INFORMATION.
3. ALL GROUND WIRE TO BE COVERED WITH TUBING 8041-02-000.
2. ALL 110V WIRE TO BE CLAMPED WITH CLAMP 10497-05-000 WITHIN 200MM OF OUTLET BOXES, USE SCREW G67-10-12B.
1. ALL WIRES TO BE SECURED WITH CLAMP 10495-01-000 OR CLIP B0734-01-000 EVERY 600MM. USE SCREW G67-10-12B UNLESS OTHERWISE SPECIFIED.

NOTES:

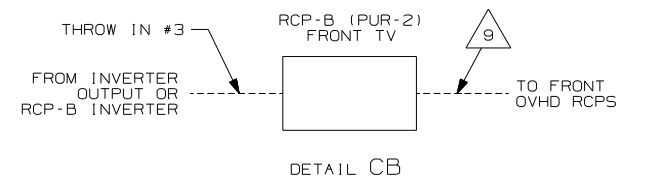
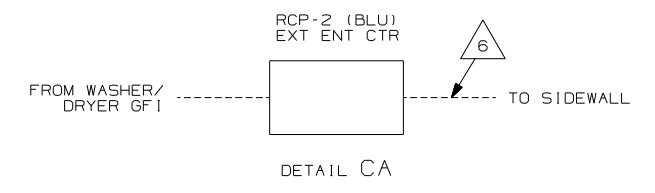
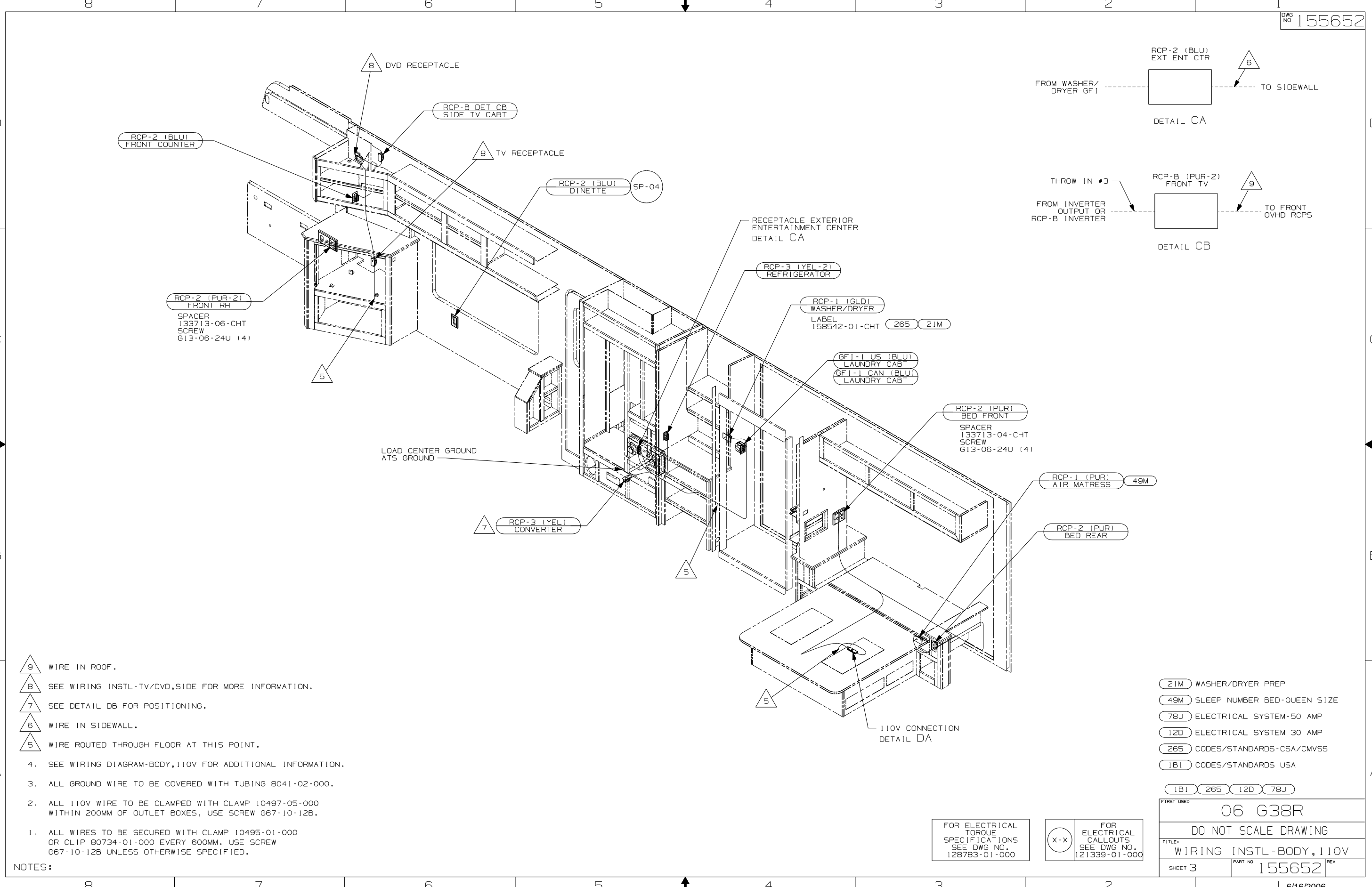


FOR ELECTRICAL TORQUE SPECIFICATIONS SEE DWG NO. 128783-01-000

FOR ELECTRICAL CALLOUTS SEE DWG NO. 121339-01-000

- 9A1 ACCESSORY PACKAGE
- 51B HAIR DRYER
- 22R VACUUM CLEANER-PORTABLE
- 78J ELECTRICAL SYSTEM-50 AMP
- 12D ELECTRICAL SYSTEM 30 AMP
- 265 CODES/STANDARDS-CSA/CMVSS
- 1B1 CODES/STANDARDS USA

FIRST USED	
06 G38R	
DO NOT SCALE DRAWING	
TITLE: WIRING INSTL-BODY, 110V	
SHEET 2	PART NO 155652 REV



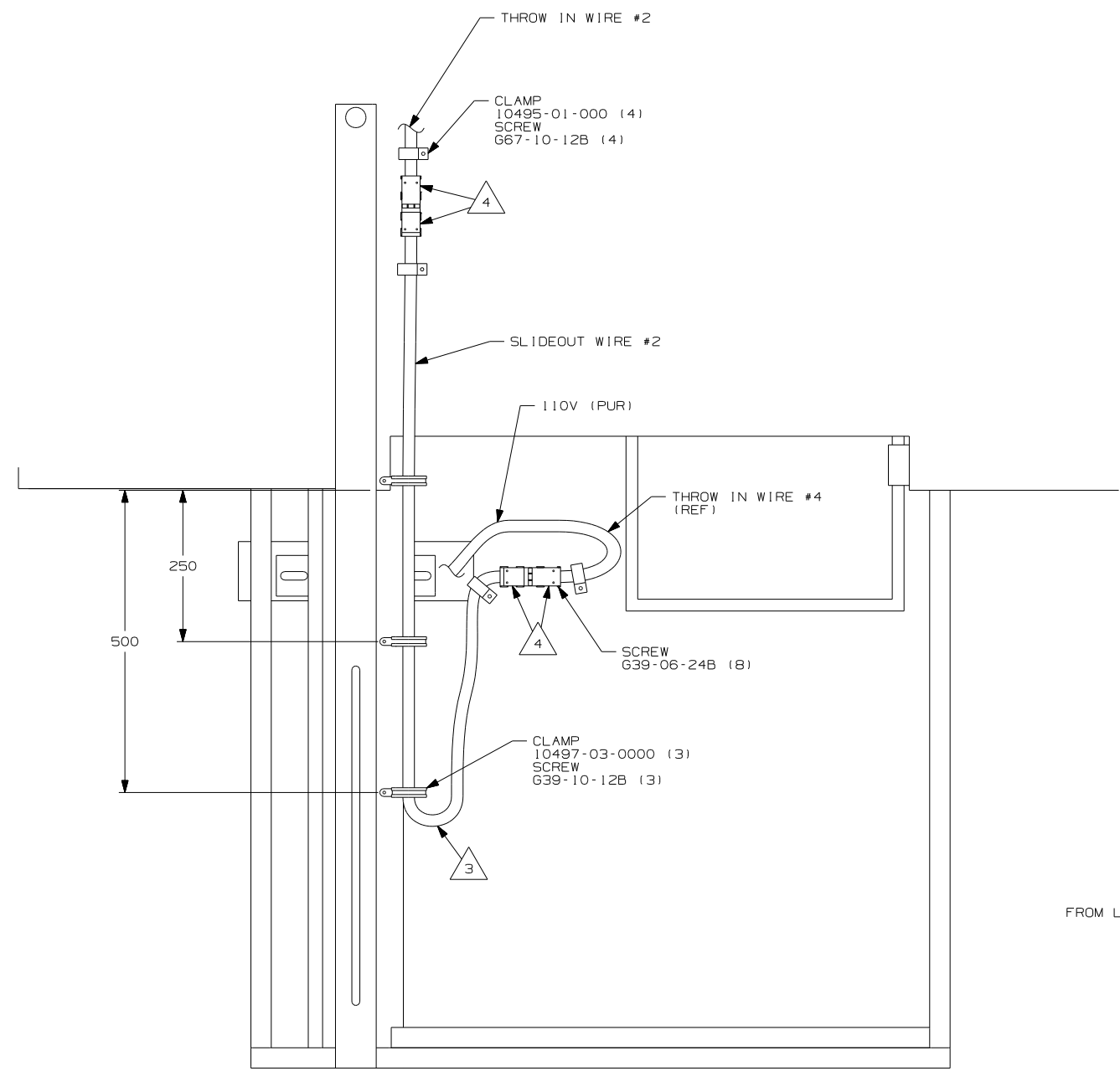
- NOTES:
- 1. ALL WIRES TO BE SECURED WITH CLAMP 10495-01-000 OR CLIP 80734-01-000 EVERY 600MM. USE SCREW G67-10-12B UNLESS OTHERWISE SPECIFIED.
  - 2. ALL 110V WIRE TO BE CLAMPED WITH CLAMP 10497-05-000 WITHIN 200MM OF OUTLET BOXES, USE SCREW G67-10-12B.
  - 3. ALL GROUND WIRE TO BE COVERED WITH TUBING 8041-02-000.
  - 4. SEE WIRING DIAGRAM-BODY, 110V FOR ADDITIONAL INFORMATION.
  - 5. WIRE ROUTED THROUGH FLOOR AT THIS POINT.
  - 6. WIRE IN SIDEWALL.
  - 7. SEE DETAIL DB FOR POSITIONING.
  - 8. SEE WIRING INSTL-TV/DVD,SIDE FOR MORE INFORMATION.
  - 9. WIRE IN ROOF.

- (21M) WASHER/DRYER PREP
- (49M) SLEEP NUMBER BED-QUEEN SIZE
- (78J) ELECTRICAL SYSTEM-50 AMP
- (12D) ELECTRICAL SYSTEM 30 AMP
- (265) CODES/STANDARDS-CSA/CMVSS
- (1B1) CODES/STANDARDS USA

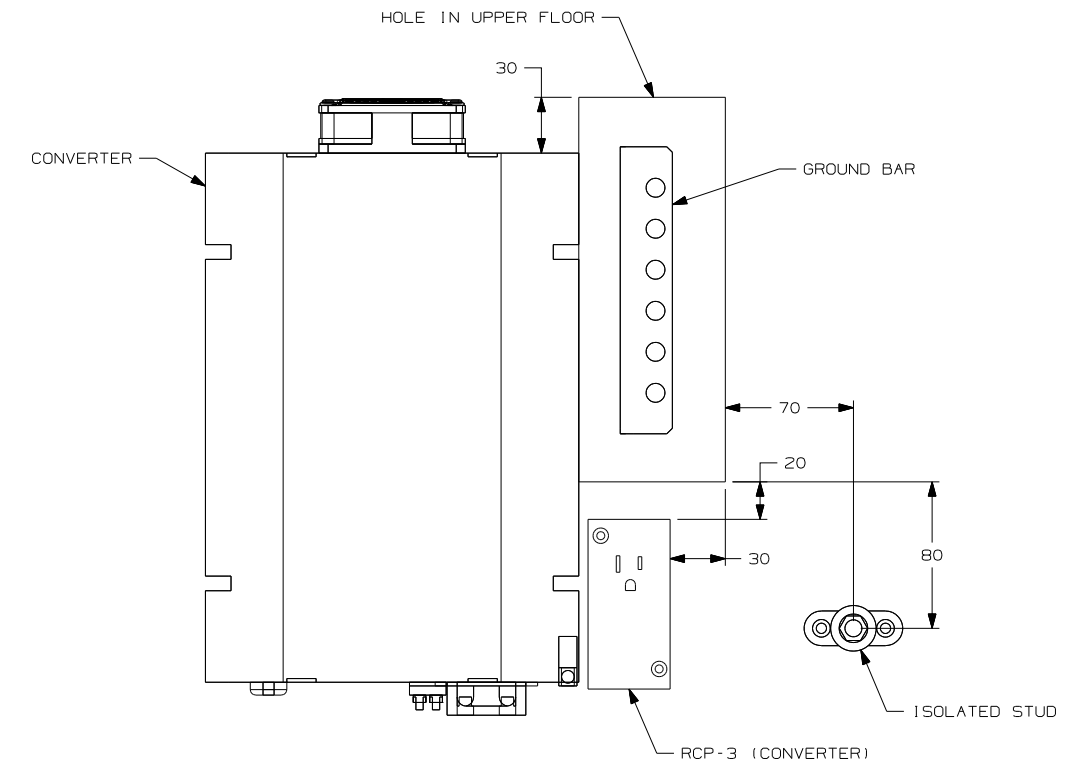
FOR ELECTRICAL TORQUE SPECIFICATIONS SEE DWG NO. 128783-01-000

FOR ELECTRICAL CALLOUTS SEE DWG NO. 121339-01-000

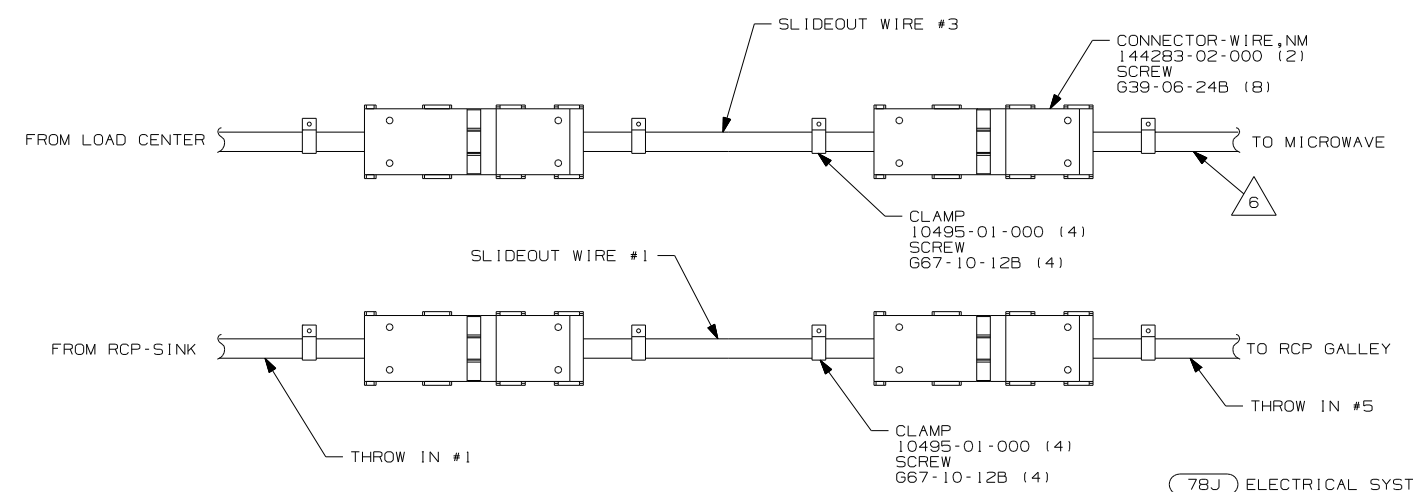
FIRST USED		06 G38R	
DO NOT SCALE DRAWING			
TITLE: WIRING INSTL-BODY, 110V			
SHEET 3	PART NO	155652	REV



DETAIL DA



DETAIL DB



DETAIL DC

- 6 WIRE IN SIDEWALL.
- 5 WIRE PASSES THROUGH FLOOR AT THIS POINT.
- 4 SEE LOAD CENTER/ATS ASM FOR ADDITIONAL INFORMATION.
- 3 MAKE THE LOOP AS SMALL AS POSSIBLE WHEN SLIDEOUT IS COMPLETELY RETRACTED.
- 2 RUN 12V WIRE ALONG WITH REAR SLIDEOUT WIRE.
- 1 WIRE MUST BE ROUTED THROUGH CLAMPS AS SHOWN.

NOTES:

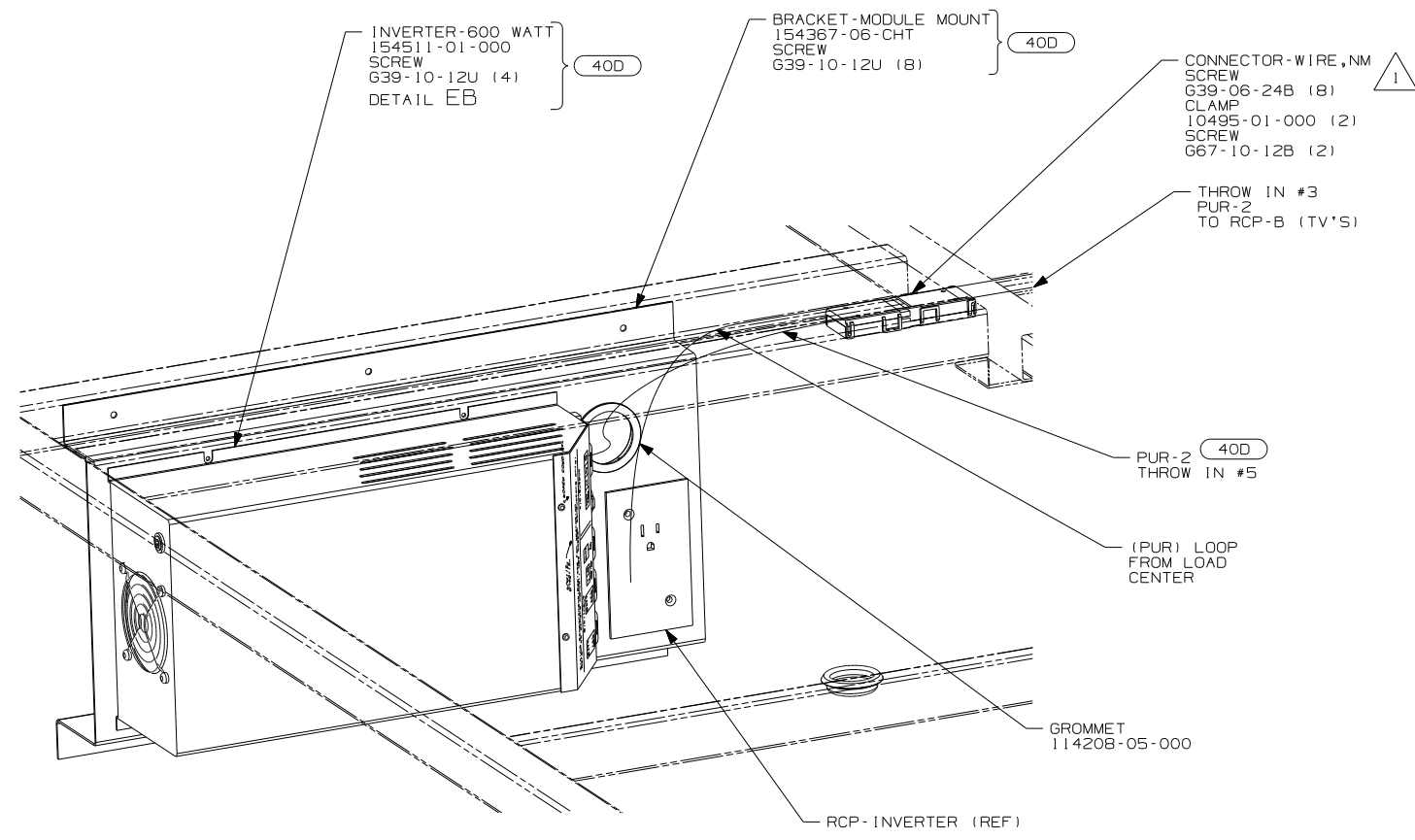
- 78J ELECTRICAL SYSTEM-50 AMP
- 12D ELECTRICAL SYSTEM 30 AMP
- 265 CODES/STANDARDS-CSA/CMVSS
- 1B1 CODES/STANDARDS USA

1B1 265 12D 78J

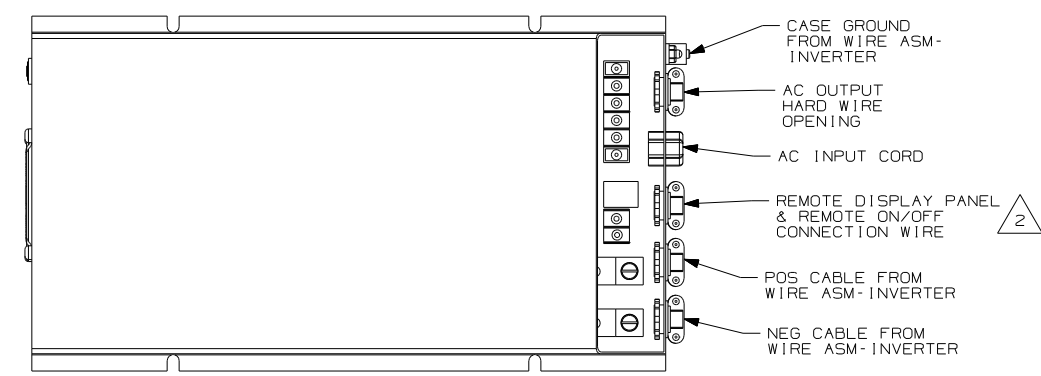
FOR ELECTRICAL TORQUE SPECIFICATIONS SEE DWG NO. 128783-01-000

FOR ELECTRICAL CALLOUTS SEE DWG NO. 121339-01-000

FIRST USED	06 G38R
TITLE	DO NOT SCALE DRAWING
TITLE	WIRING INSTL-BODY, 110V
SHEET 4	PART NO 155652 REV



VIEW EA 40D



DETAIL EB

NOTES:  
 2 WB FROM WIRE ASM-COACH TO PUR WIRE FROM INVERTER.  
 1 FOR MORE INFORMATION SEE LOAD CENTER/ATS ASM.

FOR ELECTRICAL TORQUE SPECIFICATIONS SEE DWG NO. 128783-01-000

FOR ELECTRICAL CALLOUTS SEE DWG NO. 121339-01-000

- 40D INVERTER-DC/AC, 600 WATT
- 78J ELECTRICAL SYSTEM-50 AMP
- 12D ELECTRICAL SYSTEM 30 AMP
- 265 CODES/STANDARDS-CSA/CMVSS
- 1B1 CODES/STANDARDS USA

FIRST USED	
06 G38R	
DO NOT SCALE DRAWING	
TITLE: WIRING INSTL-BODY, 110V	
SHEET 5	PART NO 155652 REV