



**DANGER**

**Danger of electrical shock, burns or death.** Always remove all power sources before attempting any repair, service or diagnostic work. Power can be present from shore power, generator, inverter or battery. All power sources must be disabled and secured before performing any service.

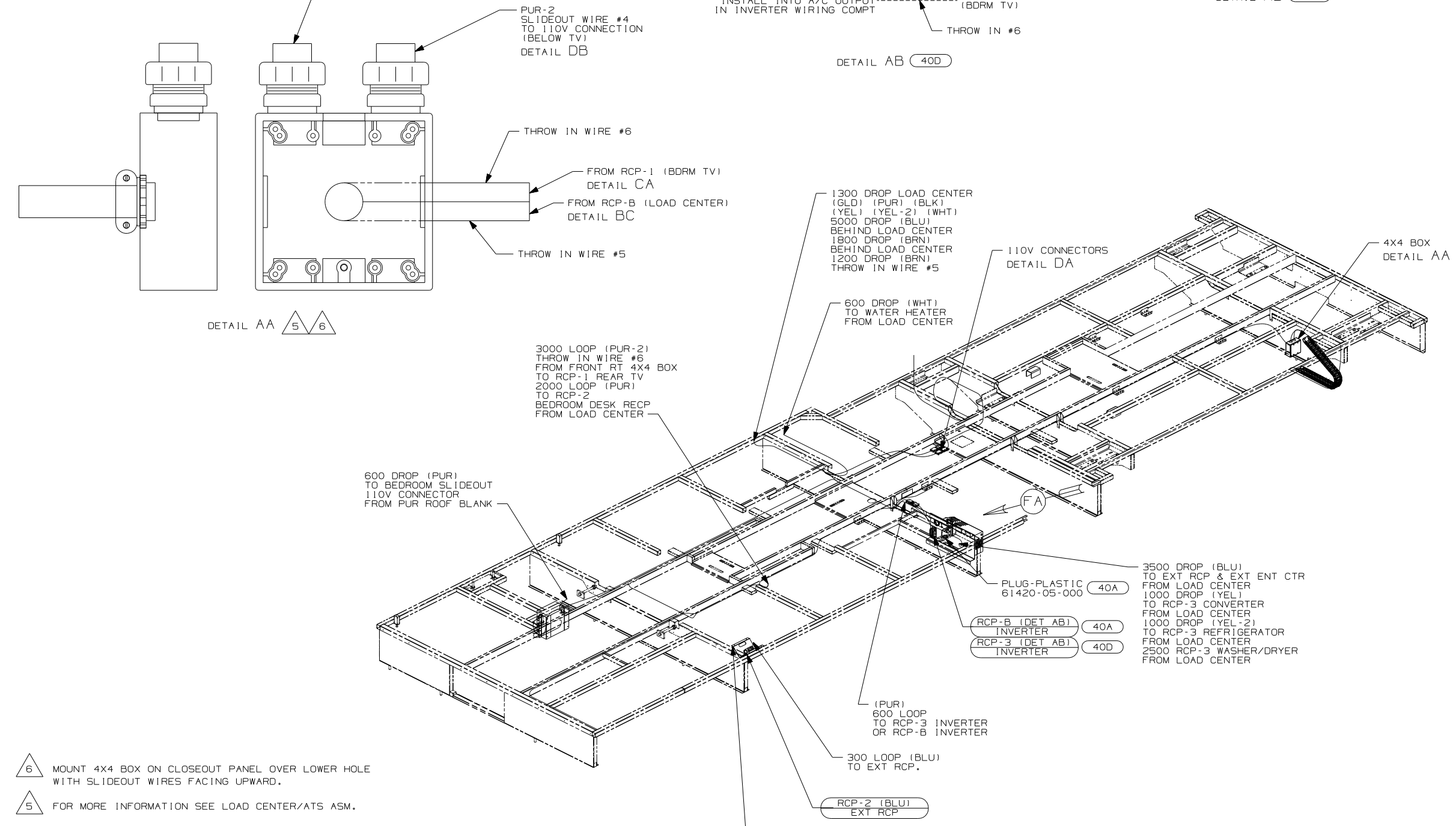


**CAUTION**

If you lack the skills, tools or equipment to perform diagnostic or repair work leave such work to an authorized Winnebago Industries dealer or other qualified shop.

DRAWING NO.	
153786-11	(1B1) (12D)
153786-12	(1B1) (78J)
153786-15	(265) (12D)
153786-16	(265) (78J)

RELEASE	REV/DATE	DWG NO	153786
REV ZONE	REVISION RECORD	DATE	DFTR-0016



- 6 MOUNT 4X4 BOX ON CLOSEOUT PANEL OVER LOWER HOLE WITH SLIDEOUT WIRES FACING UPWARD.
- 5 FOR MORE INFORMATION SEE LOAD CENTER/ATS ASM.
4. FOR MORE INFORMATION SEE WIRING DIAGRAM-BODY,110V.
3. ALL GROUND WIRE TO BE COVERED WITH TUBING 8041-02-000.
2. ALL 110V WIRE TO BE CLAMPED WITH CLAMP 10497-05-000 WITHIN 200MM OF OUTLET BOXES, USE SCREW 667-10-12B.
1. ALL WIRES TO BE SECURED WITH CLAMP 10495-01-000 OR CLIP 80734-01-000 EVERY 600MM. USE SCREW 667-10-12B UNLESS OTHERWISE SPECIFIED.

NOTES:

FOR ELECTRICAL TORQUE SPECIFICATIONS SEE DWG NO. 128783-01-000

(X-X) FOR ELECTRICAL CALLOUTS SEE DWG NO. 121339-01-000

- (40A) INVERTER-DC/AC WITHOUT
- (40D) INVERTER-DC/AC,400 WATT
- (265) CODES/STANDARDS - CSA/CMVSS
- (1B1) CODES/STANDARDS - USA

WINNEBAGO COPYRIGHT 2006 WINNEBAGO INDUSTRIES, INC.

DFTR	ORIG. DATE
CHKR	ALL DIMENSIONS ARE IN MILLIMETERS
P.E.	
M.E.	FIRST USED
DSNR	06 G38J

UNSPECIFIED TOLERANCES ARE: MATERIAL:

WHOLE DIM (X) :

ONE-PLACE (X.X) :

TWO-PLACE (X.XX) :

ANGLE :

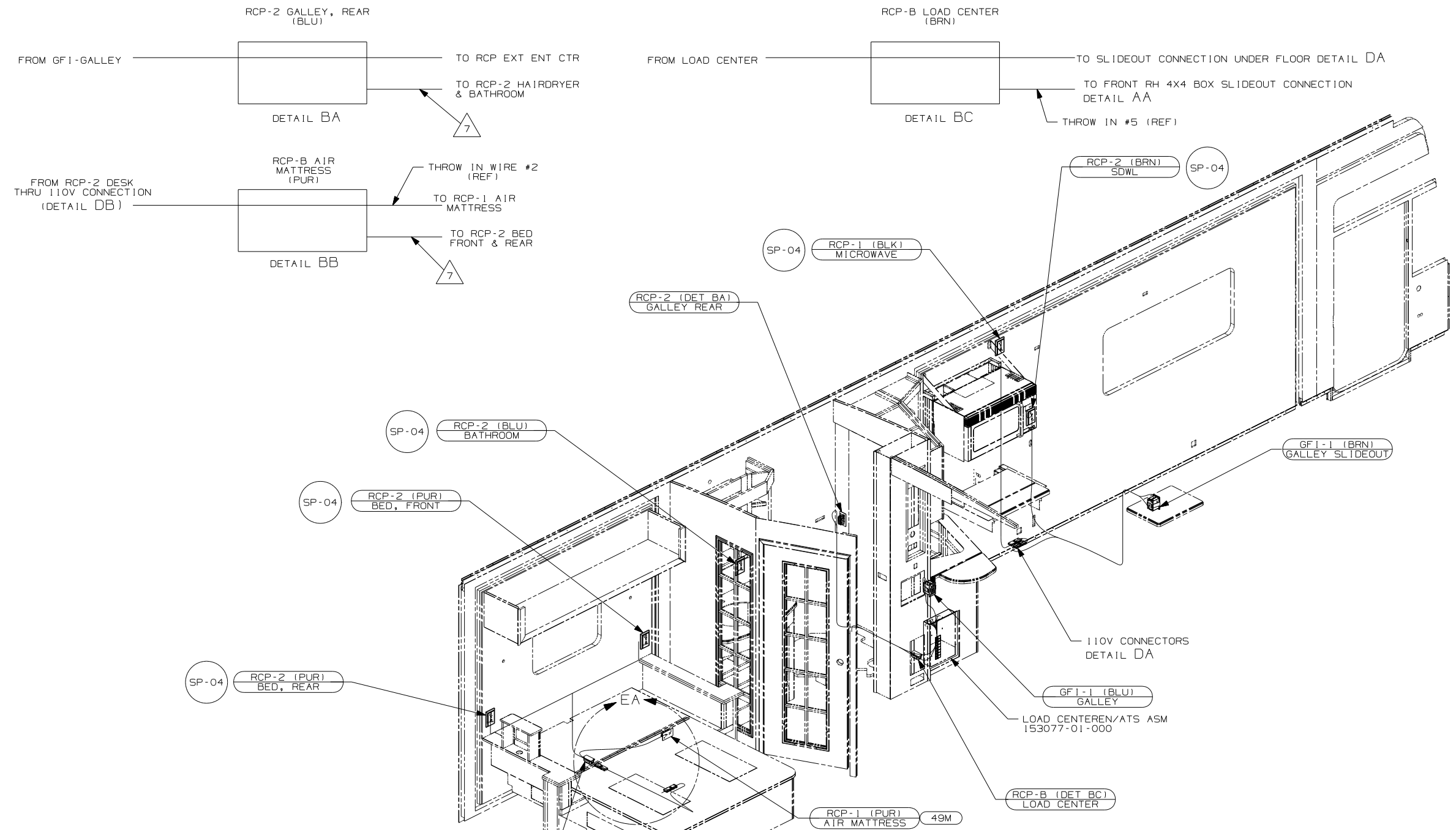
THIRD ANGLE PROJECTION

DO NOT SCALE DRAWING

TITLE: WIRING INSTL-BODY, 110V

SHEET 1 of 6 PART NO 153786 REV

REF: 1 6/16/2006



- 8 WIRE IN ROOF.
- 7 WIRE IN SIDEWALL.
- 6 WIRE ROUTED THROUGH FLOOR AT THIS POINT.
- 5 FOR MORE INFORMATION SEE LOAD CENTER/ATS ASM.

4. FOR MORE INFORMATION SEE WIRING DIAGRAM-BODY,110V.
3. ALL GROUND WIRE TO BE COVERED WITH TUBING 8041-02-000.
2. ALL 110V WIRE TO BE CLAMPED WITH CLAMP 10497-05-000 WITHIN 200MM OF OUTLET BOXES, USE SCREW G67-10-12B.
1. ALL WIRES TO BE SECURED WITH CLAMP 10495-01-000 OR CLIP 80734-01-000 EVERY 600MM. USE SCREW G67-10-12B UNLESS OTHERWISE SPECIFIED.

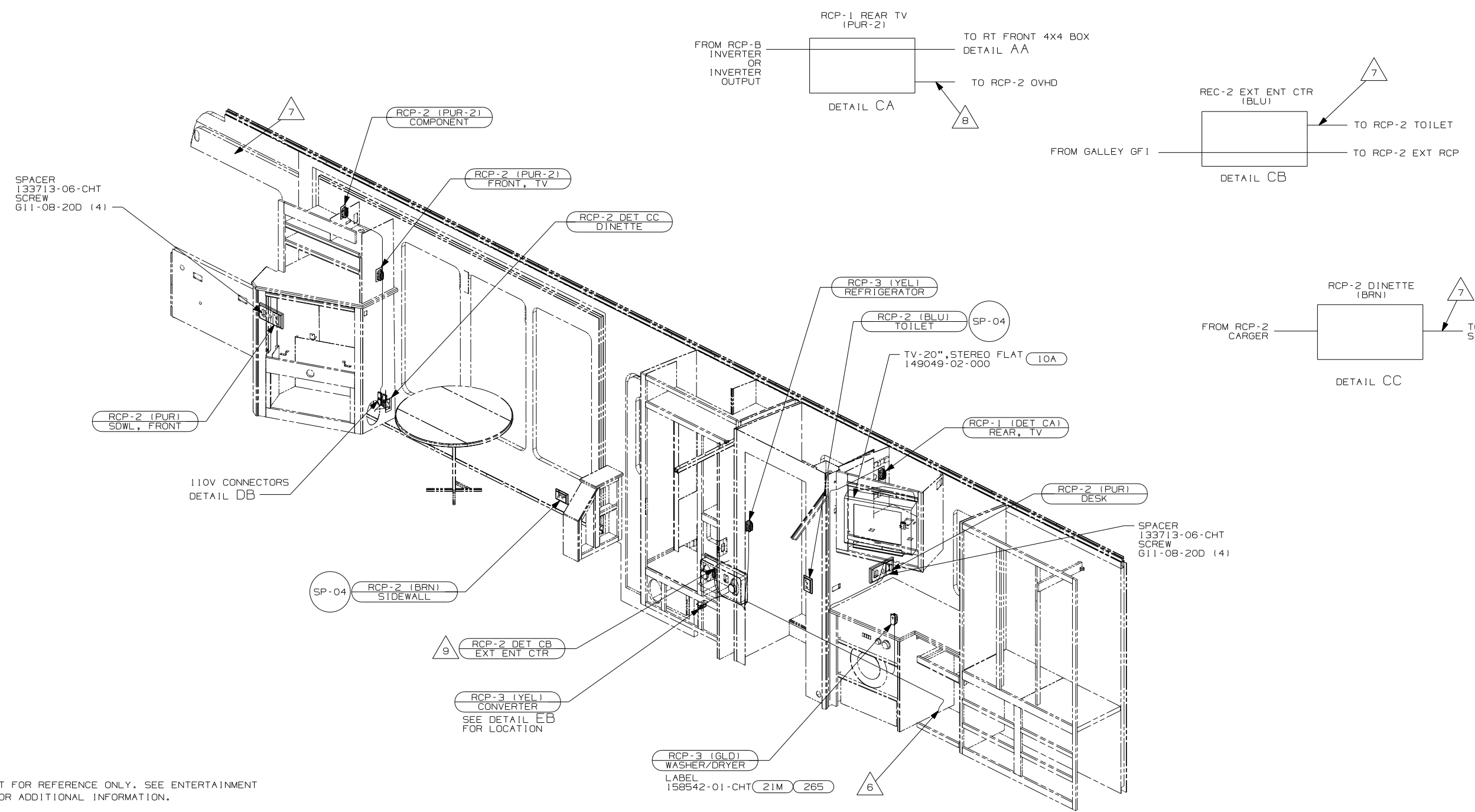
NOTES:

- 51B HAIR DRYER
- 22R VACUUM CLEANER-PORTABLE
- 9A1 ACCESSORY PACKAGE
- 49M SLEEP NUMBER BED-QUEEN SIZE
- 20C SOUND SYSTEM DELUXE
- 1B1 CODES/STANDARDS - USA

FIRST USED		06 G38J	
DO NOT SCALE DRAWING			
TITLE: WIRING INSTL-BODY,110V			
SHEET 2	PART NO	153786	REV

FOR ELECTRICAL TORQUE SPECIFICATIONS SEE DWG NO. 128783-01-000

FOR ELECTRICAL CALLOUTS SEE DWG NO. 121339-01-000



- 9 RECEPTACLE CALLOUT FOR REFERENCE ONLY. SEE ENTERTAINMENT CENTER COMPLETE FOR ADDITIONAL INFORMATION.  
 8 WIRE IN ROOF.  
 7 WIRE IN SIDEWALL.  
 6 WIRE ROUTED THROUGH FLOOR AT THIS POINT.  
 5 FOR MORE INFORMATION SEE LOAD CENTER/ATS ASM.  
 4. FOR MORE INFORMATION SEE WIRING DIAGRAM-BODY,110V.  
 3. ALL GROUND WIRE TO BE COVERED WITH TUBING 8041-02-000.  
 2. ALL 110V WIRE TO BE CLAMPED WITH CLAMP 10497-05-000 WITHIN 200MM OF OUTLET BOXES, USE SCREW G67-10-12B.  
 1. ALL WIRES TO BE SECURED WITH CLAMP 10495-01-000 OR CLIP 80734-01-000 EVERY 600MM. USE SCREW G67-10-12B UNLESS OTHERWISE SPECIFIED.

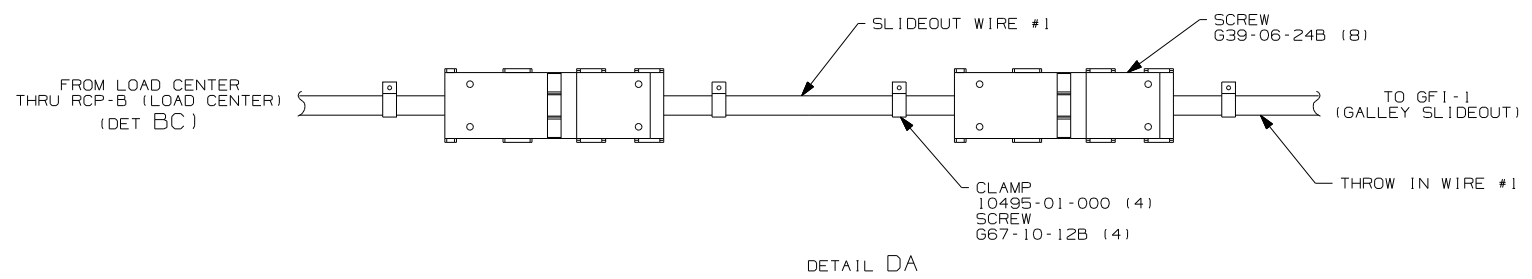
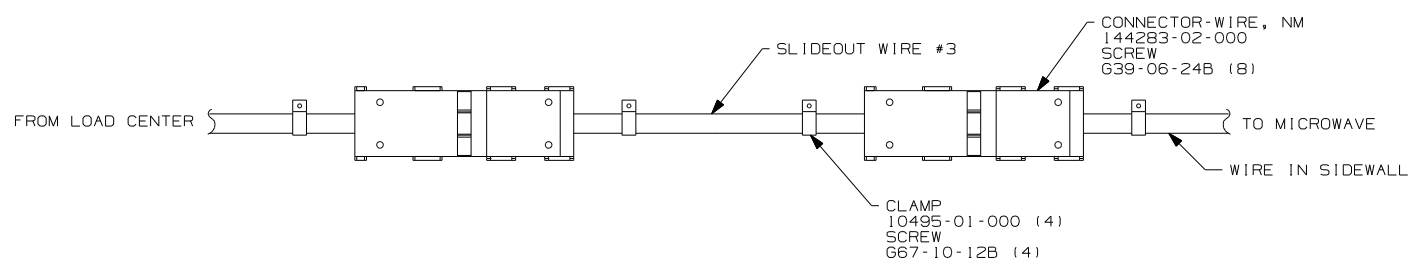
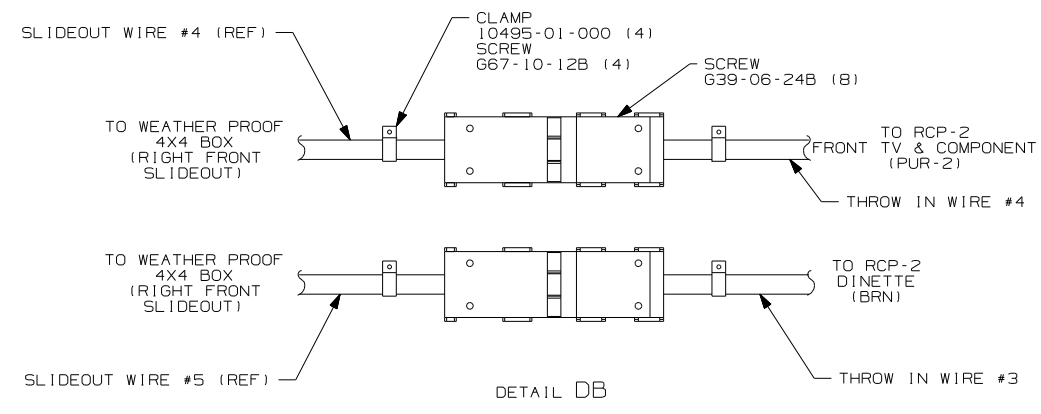
NOTES:

- (21M) WASHER/DRYER PREP
- (10A) TV (REAR) -20"COLOR, STEREO
- (1B1) CODES/STANDARDS - USA

FIRST USED	
06 G38J	
DO NOT SCALE DRAWING	
TITLE:	
WIRING INSTL-BODY,110V	
SHEET 3	PART NO 153786 REV

FOR ELECTRICAL TORQUE SPECIFICATIONS SEE DWG NO. 128783-01-000

FOR ELECTRICAL CALLOUTS SEE DWG NO. 121339-01-000



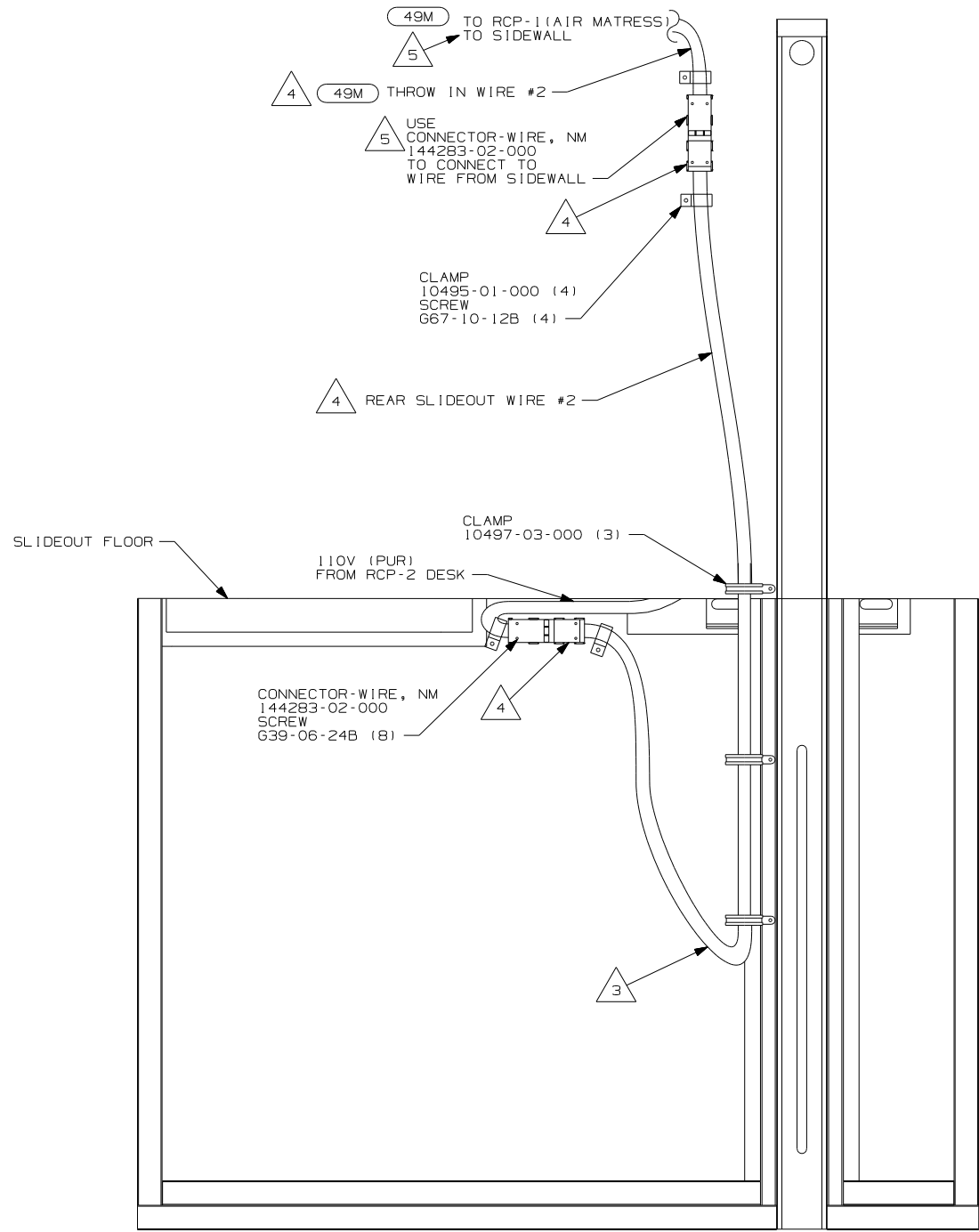
- (78J) ELECTRICAL SYTEM - 50 AMP
- (12D) ELECTRICAL SYSTEM - 30 AMP
- (265) CODES/STANDARDS - CSA/CMVSS
- (1B1) CODES/STANDARDS - USA

(1B1) (265) (12D) (78J)

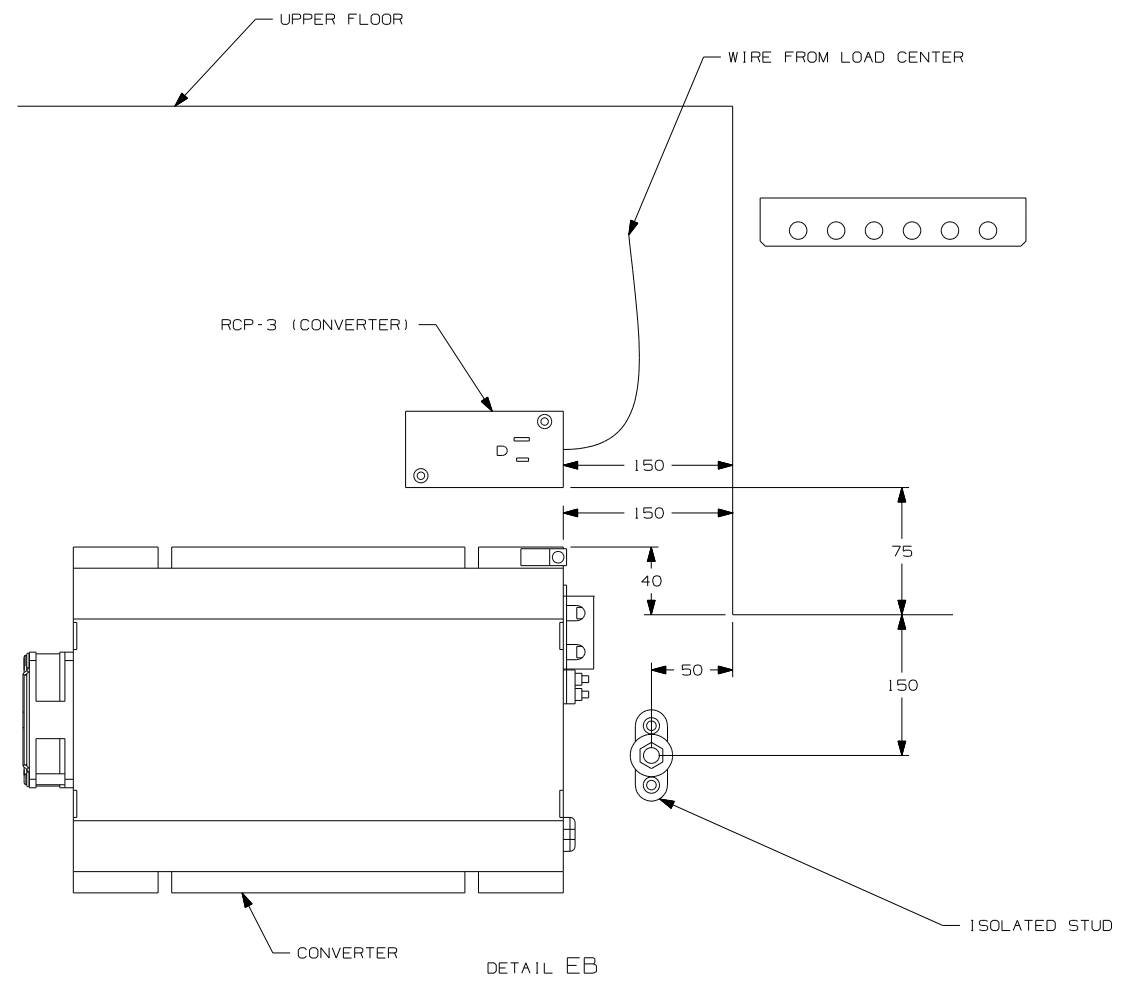
FIRST USED	06 G38J	
TITLE	DO NOT SCALE DRAWING	
	WIRING INSTL-BODY, 110V	
SHEET 4	PART NO	REV
	153786	

FOR ELECTRICAL TORQUE SPECIFICATIONS SEE DWG NO. 128783-01-000

(X-X) FOR ELECTRICAL CALLOUTS SEE DWG NO. 121339-01-000



DETAIL EA 4



DETAIL EB

- 5 WITH OUT 49M
- 4 FOR MORE INFORMATION SEE LOAD CENTER/ATS ASM.
- 3 MAKE LOOP AS SMALL AS POSSIBLE WHEN SLIDEOUT IS COMPLETELY RETRACTED.
- 2 RUN 12V WIRE ALONG WITH REAR SLIDEOUT WIRE.
- 1 WIRE MUST BE ROUTED THROUGH CLAMPS AS SHOWN.

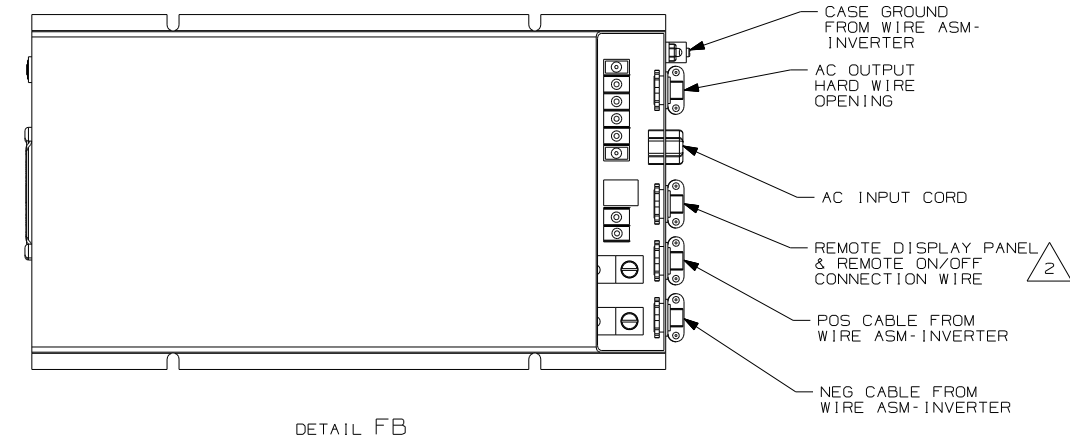
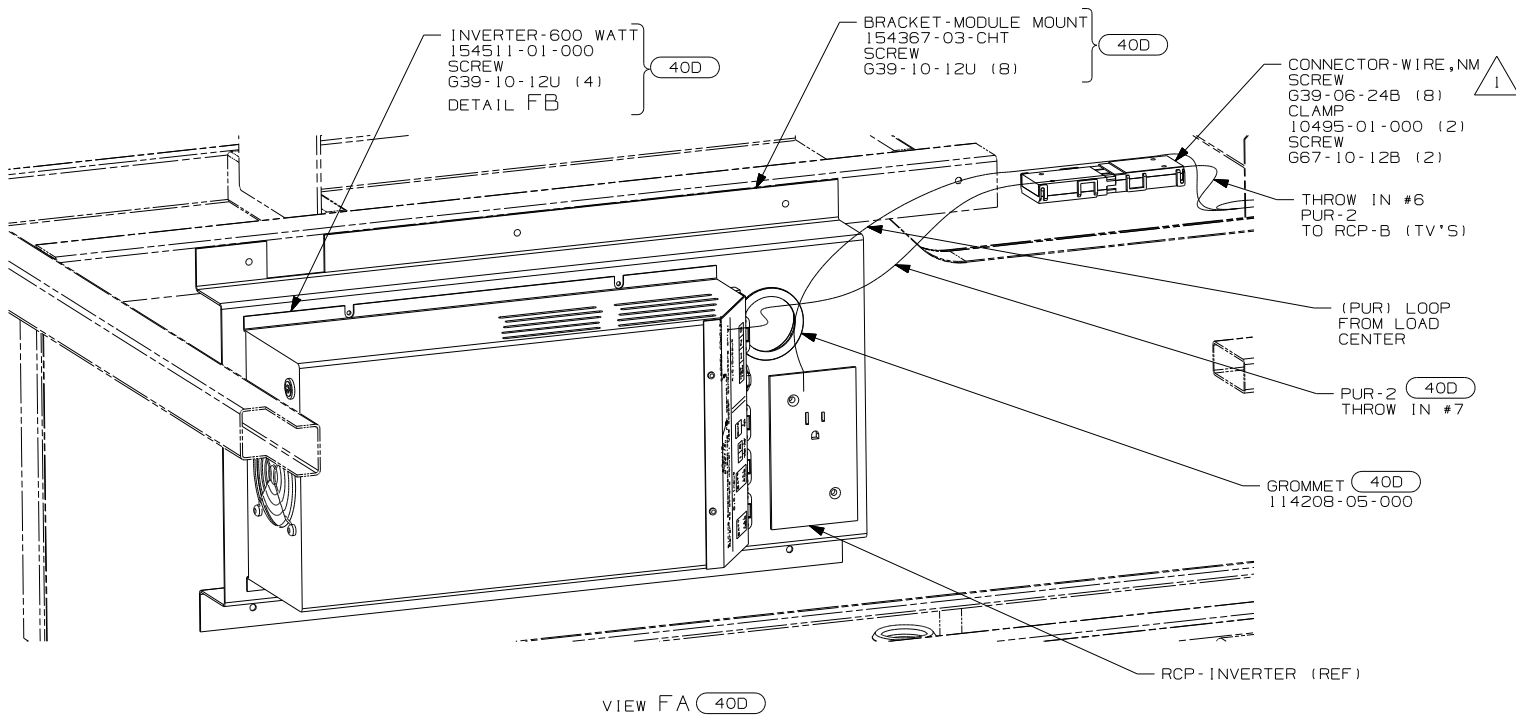
NOTES:

FOR ELECTRICAL TORQUE SPECIFICATIONS SEE DWG NO. 128783-01-000

FOR ELECTRICAL CALLOUTS SEE DWG NO. 121339-01-000

49M SLEEP NUMBER BED-QUEEN SIZE

FIRST USED	06 G38J	
DO NOT SCALE DRAWING		
TITLE:	WIRING INSTL-BODY, 110V	
SHEET 5	PART NO	153786
	REV	



40D INVERTER-DC/AC,600 WATT

NOTES:

2 WB FROM WIRE ASM-COACH TO PUR WIRE FROM INVERTER.

1 FOR MORE INFORMATION SEE LOAD CENTER/ATS ASM.

FIRST USED	06 G38J		
TITLE	DO NOT SCALE DRAWING		
	WIRING INSTL-BODY,110V		
SHEET 6	PART NO	153786	REV