



DANGER

Danger of electrical shock, burns or death. Always remove all power sources before attempting any repair, service or diagnostic work. Power can be present from shore power, generator, inverter or battery. All power sources must be disabled and secured before performing any service.

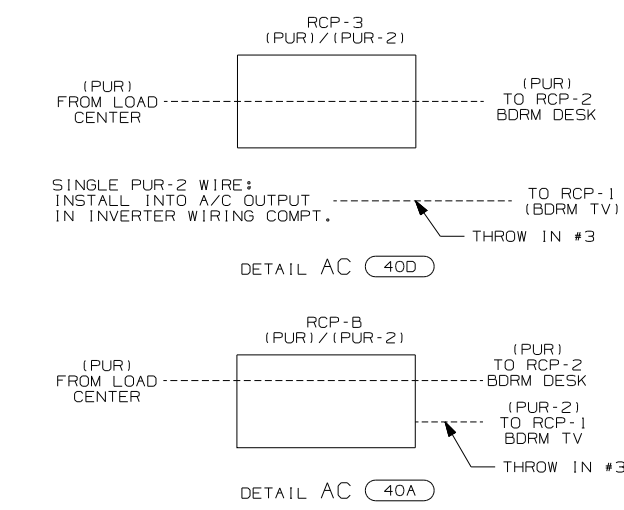
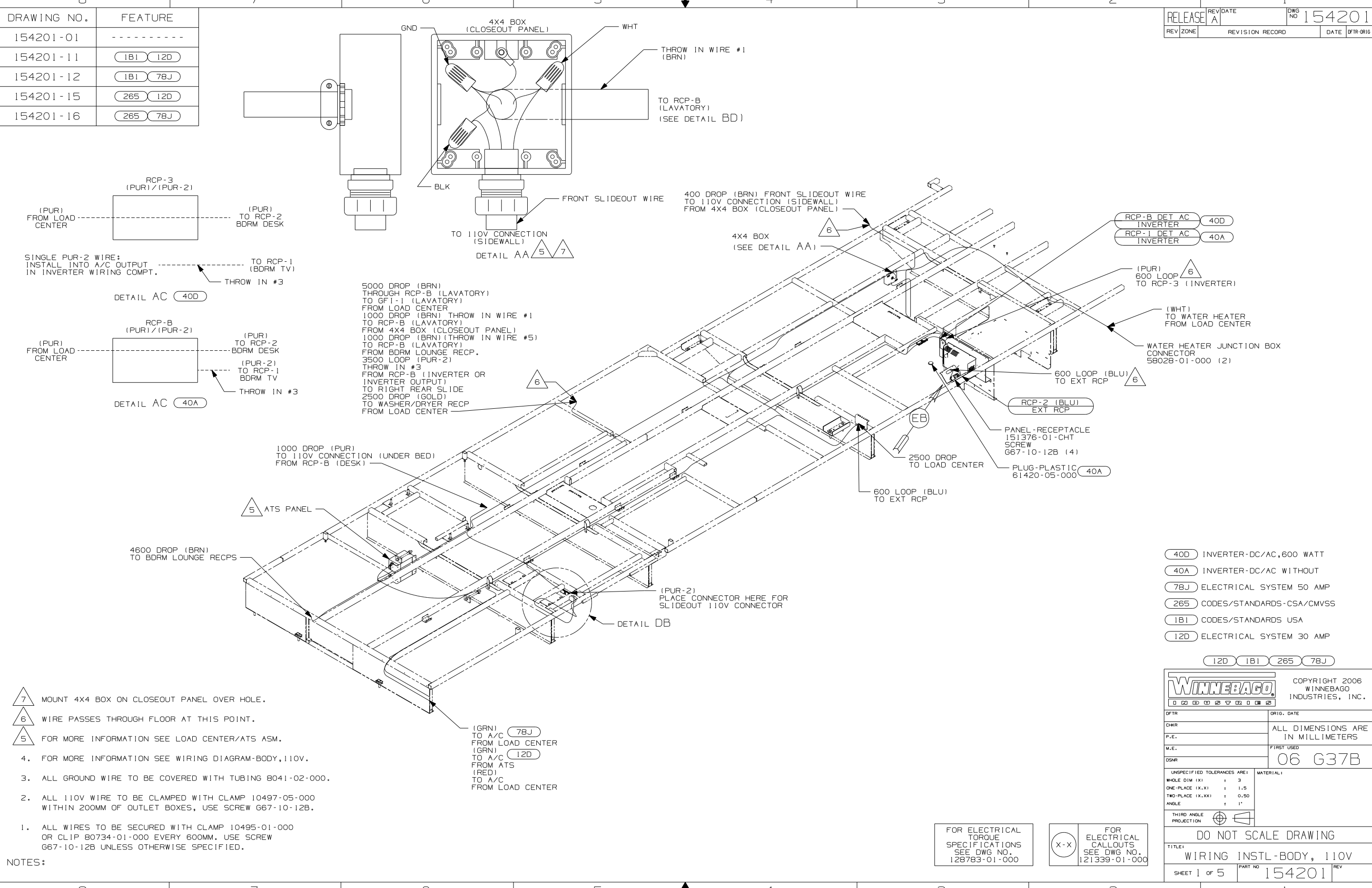


CAUTION

If you lack the skills, tools or equipment to perform diagnostic or repair work leave such work to an authorized Winnebago Industries dealer or other qualified shop.

DRAWING NO.	FEATURE
154201-01	-----
154201-11	(1B1) (12D)
154201-12	(1B1) (78J)
154201-15	(265) (12D)
154201-16	(265) (78J)

RELEASE	REV/DATE	DWG NO
	A	154201
REV ZONE	REVISION RECORD	DATE
		DFTR-016



5000 DROPT (BRN)
 THROUGH RCP-B (LAVATORY)
 TO GF1-1 (LAVATORY)
 FROM LOAD CENTER
 1000 DROPT (BRN) THROW IN WIRE #1
 TO RCP-B (LAVATORY)
 FROM 4X4 BOX (CLOSEOUT PANEL)
 1000 DROPT (BRN) THROW IN WIRE #5)
 TO RCP-B (LAVATORY)
 FROM BDRM LOUNGE RECPT.
 3500 LOOP (PUR-2)
 THROW IN #3
 FROM RCP-B (INVERTER OR
 INVERTER OUTPUT)
 TO RIGHT REAR SLIDE
 2500 DROPT (GOLD)
 TO WASHER/DRYER RECPT
 FROM LOAD CENTER

- NOTES:
- ALL WIRES TO BE SECURED WITH CLAMP 10495-01-000 OR CLIP 80734-01-000 EVERY 600MM. USE SCREW G67-10-12B UNLESS OTHERWISE SPECIFIED.
 - ALL 110V WIRE TO BE CLAMPED WITH CLAMP 10497-05-000 WITHIN 200MM OF OUTLET BOXES, USE SCREW G67-10-12B.
 - ALL GROUND WIRE TO BE COVERED WITH TUBING 8041-02-000.
 - FOR MORE INFORMATION SEE WIRING DIAGRAM-BODY, 110V.

- (40D) INVERTER-DC/AC, 600 WATT
- (40A) INVERTER-DC/AC WITHOUT
- (78J) ELECTRICAL SYSTEM 50 AMP
- (265) CODES/STANDARDS-CSA/CMVSS
- (1B1) CODES/STANDARDS USA
- (12D) ELECTRICAL SYSTEM 30 AMP

(12D) (1B1) (265) (78J)

WINNEBAGO COPYRIGHT 2006
 WINNEBAGO
 INDUSTRIES, INC.

DFTR	ORIG. DATE
CHKR	ALL DIMENSIONS ARE IN MILLIMETERS
P.E.	FIRST USED
M.E.	06 G37B
DSNR	

UNSPECIFIED TOLERANCES ARE: MATERIAL:

HOLE DIM (X)	: 3
ONE-PLACE (X.X)	: 1.5
TWO-PLACE (X.XX)	: 0.50
ANGLE	: 1°

THIRD ANGLE PROJECTION

DO NOT SCALE DRAWING

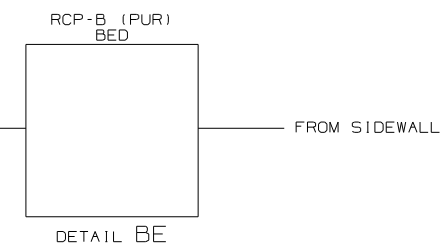
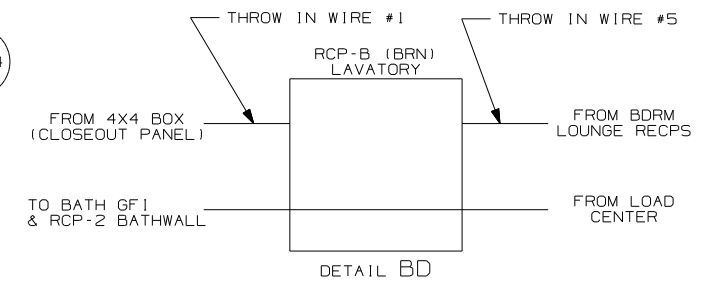
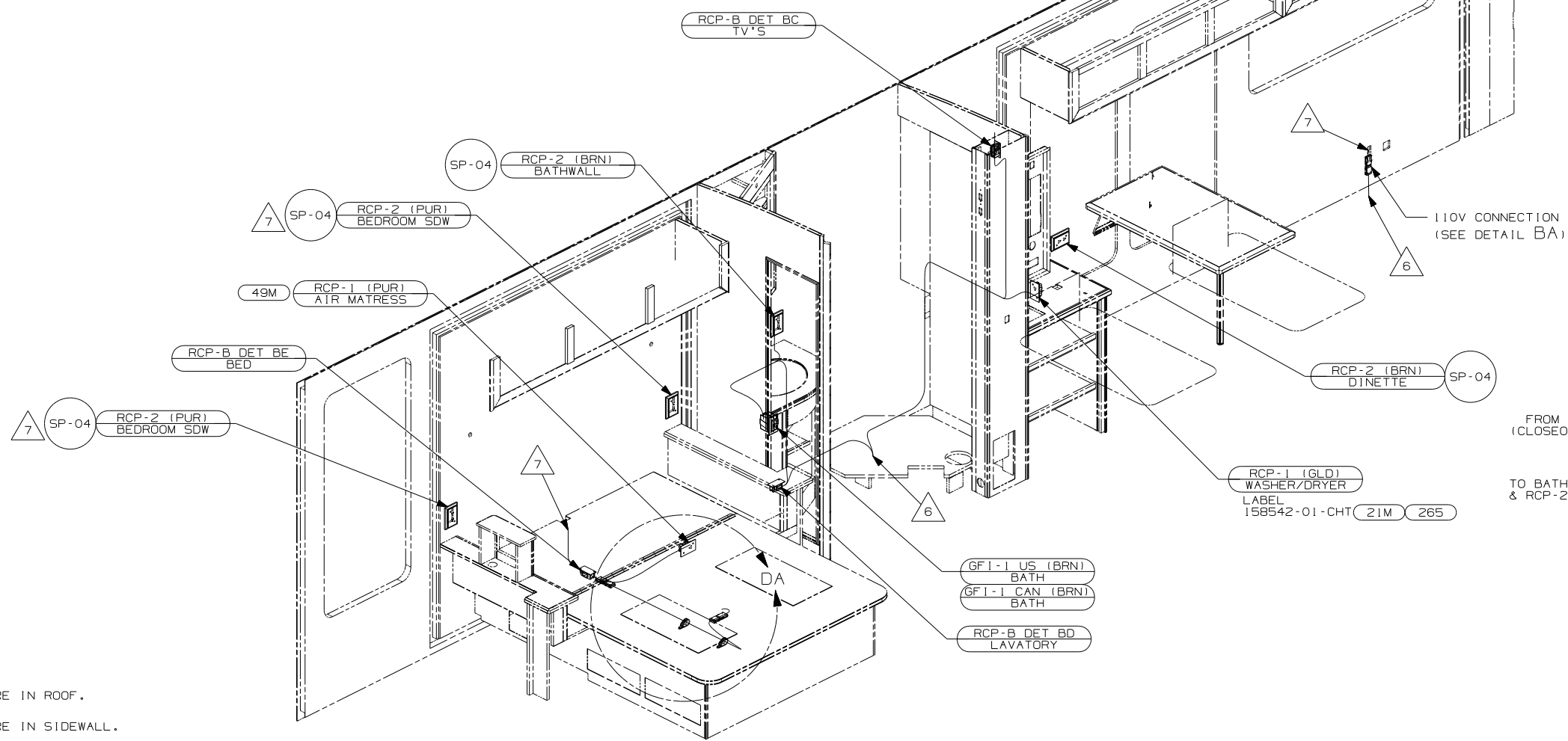
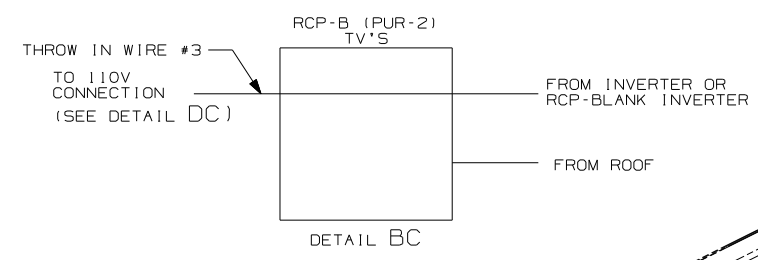
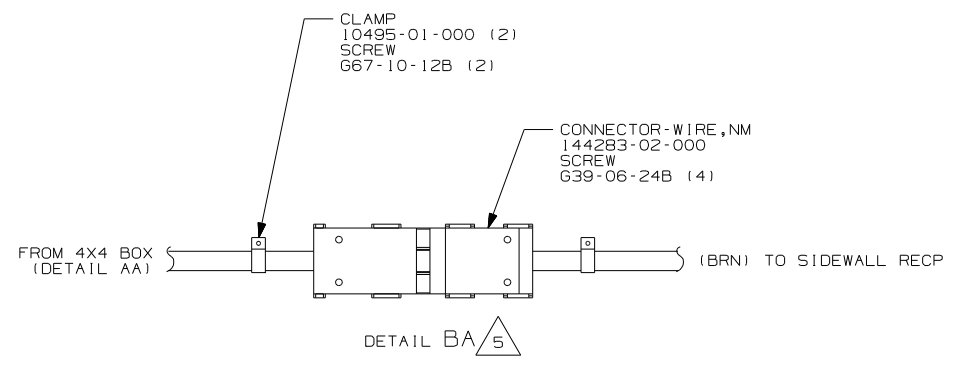
TITLE: WIRING INSTL-BODY, 110V

SHEET 1 of 5 PART NO 154201 REV

REF: 1 6/16/2006

FOR ELECTRICAL TORQUE SPECIFICATIONS SEE DWG NO. 128783-01-000

(X-X) FOR ELECTRICAL CALLOUTS SEE DWG NO. 121339-01-000



- 8 WIRE IN ROOF.
- 7 WIRE IN SIDEWALL.
- 6 WIRE ROUTED THROUGH FLOOR AT THIS POINT.
- 5 FOR ADDITIONAL INFORMATION SEE LOAD CENTER/ATS ASM.

4. FOR MORE INFORMATION SEE WIRING DIAGRAM-BODY,110V.
3. ALL GROUND WIRE TO BE COVERED WITH TUBING 8041-02-000.
2. ALL 110V WIRE TO BE CLAMPED WITH CLAMP 10497-05-000 WITHIN 200MM OF OUTLET BOXES, USE SCREW G67-10-12B.
1. ALL WIRES TO BE SECURED WITH CLAMP 10495-01-000 OR CLIP 80734-01-000 EVERY 600MM. USE SCREW G67-10-12B UNLESS OTHERWISE SPECIFIED.

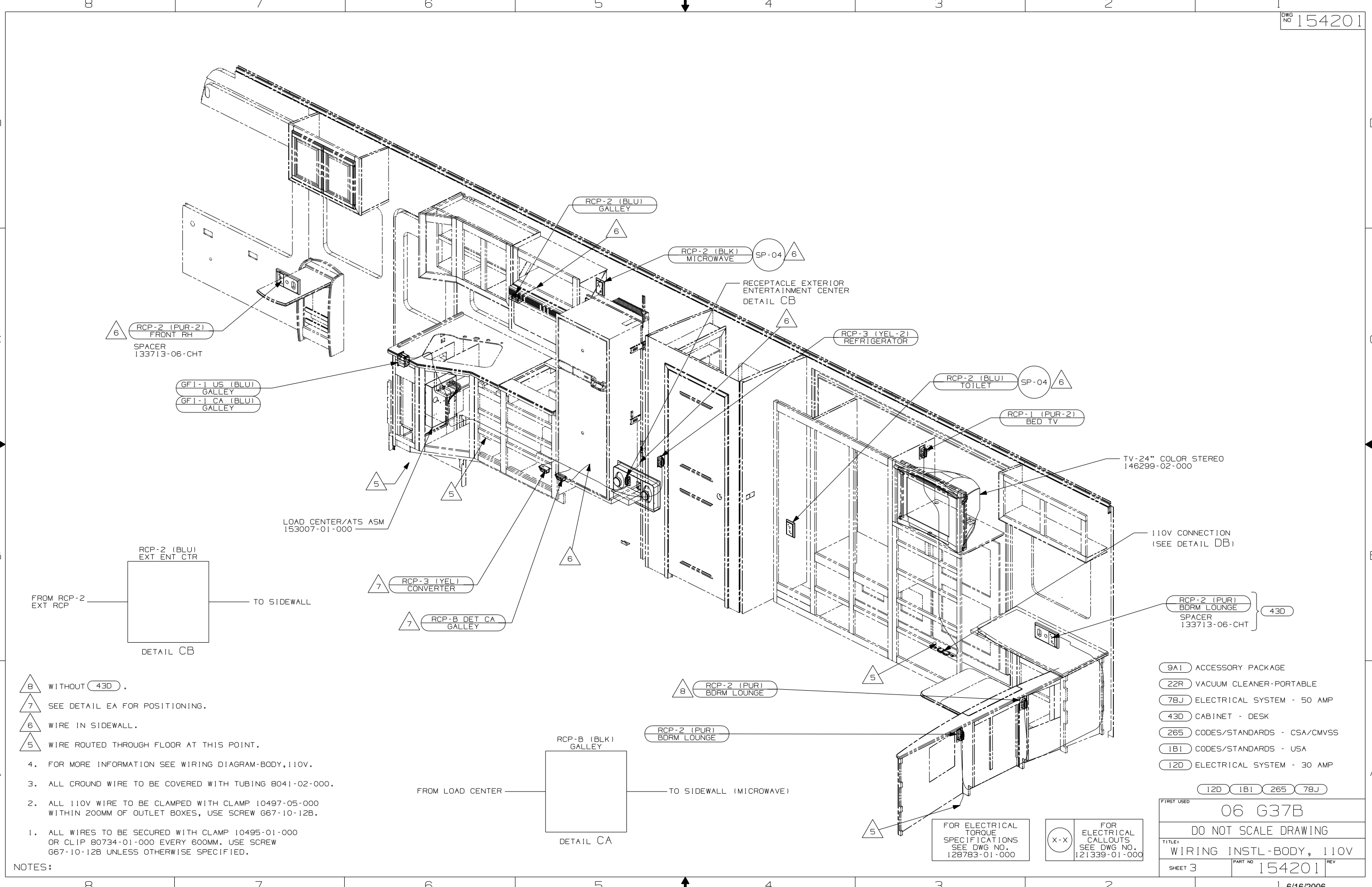
NOTES:

- 49M SLEEP NUMBER BED-QUEEN SIZE
- 7BJ ELECTRICAL SYSTEM - 50 AMP
- 265 CODES/STANDARDS-CSA/CMVSS
- 21M WASHER/DRYER PREP
- 21L DINING TABLE AND CHAIRS
- 21K DINING/COMPUTER TABLE & CHAIRS
- 1B1 CODES/STANDARDS USA
- 14W DINETTE
- 12D ELECTRICAL SYSTEM - 30 AMP

FIRST USED		06 G37B	
DO NOT SCALE DRAWING			
TITLE: WIRING INSTL-BODY, 110V			
SHEET 2	PART NO	154201	REV

FOR ELECTRICAL TORQUE SPECIFICATIONS SEE DWG NO. 128783-01-000

FOR ELECTRICAL CALLOUTS SEE DWG NO. 121339-01-000



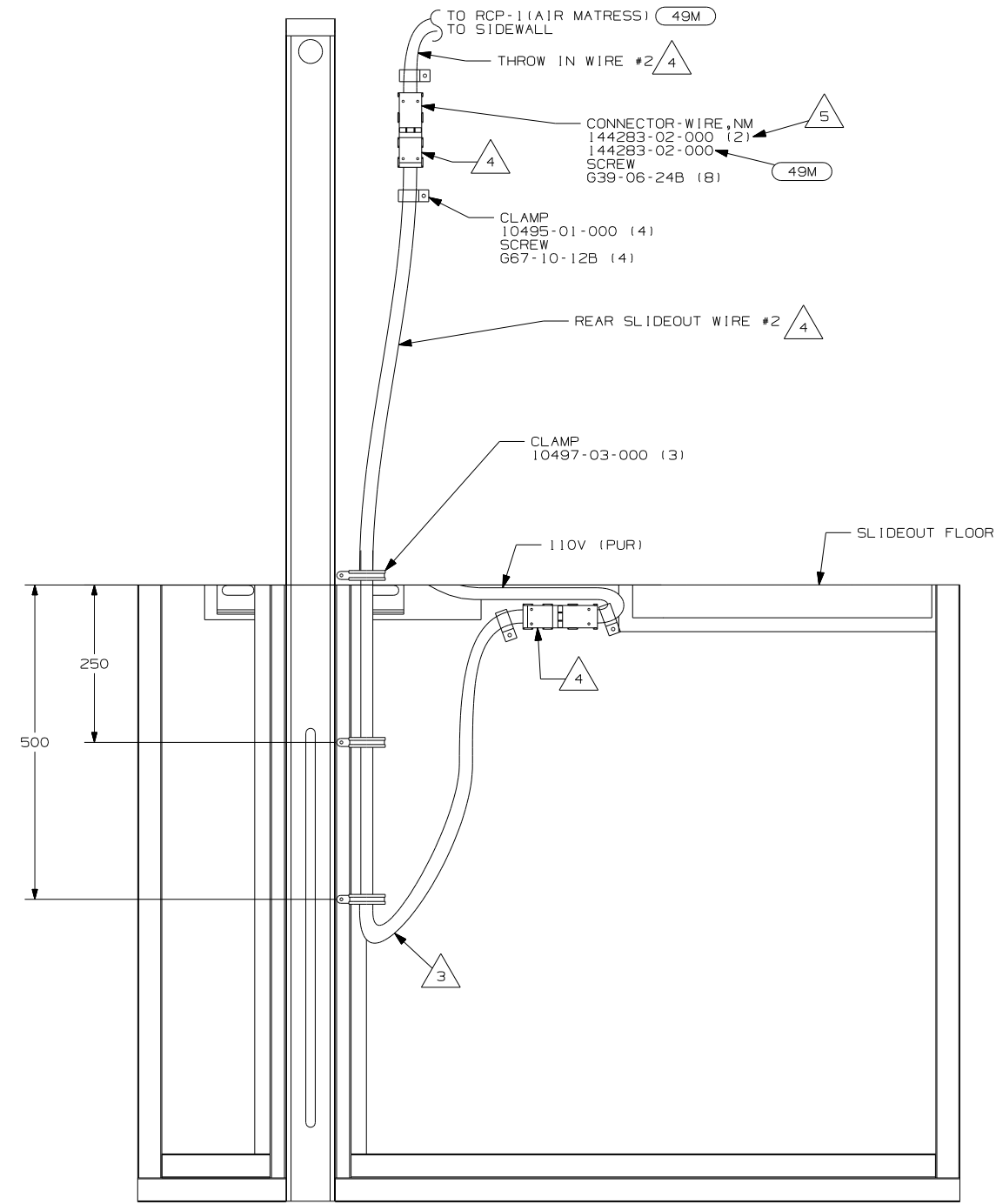
- NOTES:
- 1. ALL WIRES TO BE SECURED WITH CLAMP 10495-01-000 OR CLIP 80734-01-000 EVERY 600MM. USE SCREW G67-10-12B UNLESS OTHERWISE SPECIFIED.
 - 2. ALL 110V WIRE TO BE CLAMPED WITH CLAMP 10497-05-000 WITHIN 200MM OF OUTLET BOXES, USE SCREW G67-10-12B.
 - 3. ALL GROUND WIRE TO BE COVERED WITH TUBING 8041-02-000.
 - 4. FOR MORE INFORMATION SEE WIRING DIAGRAM-BODY,110V.
 - 5. WIRE ROUTED THROUGH FLOOR AT THIS POINT.
 - 6. WIRE IN SIDEWALL.
 - 7. SEE DETAIL EA FOR POSITIONING.
 - 8. WITHOUT 43D.

- 9A1 ACCESSORY PACKAGE
- 22R VACUUM CLEANER-PORTABLE
- 78J ELECTRICAL SYSTEM - 50 AMP
- 43D CABINET - DESK
- 265 CODES/STANDARDS - CSA/CMVSS
- 1B1 CODES/STANDARDS - USA
- 12D ELECTRICAL SYSTEM - 30 AMP

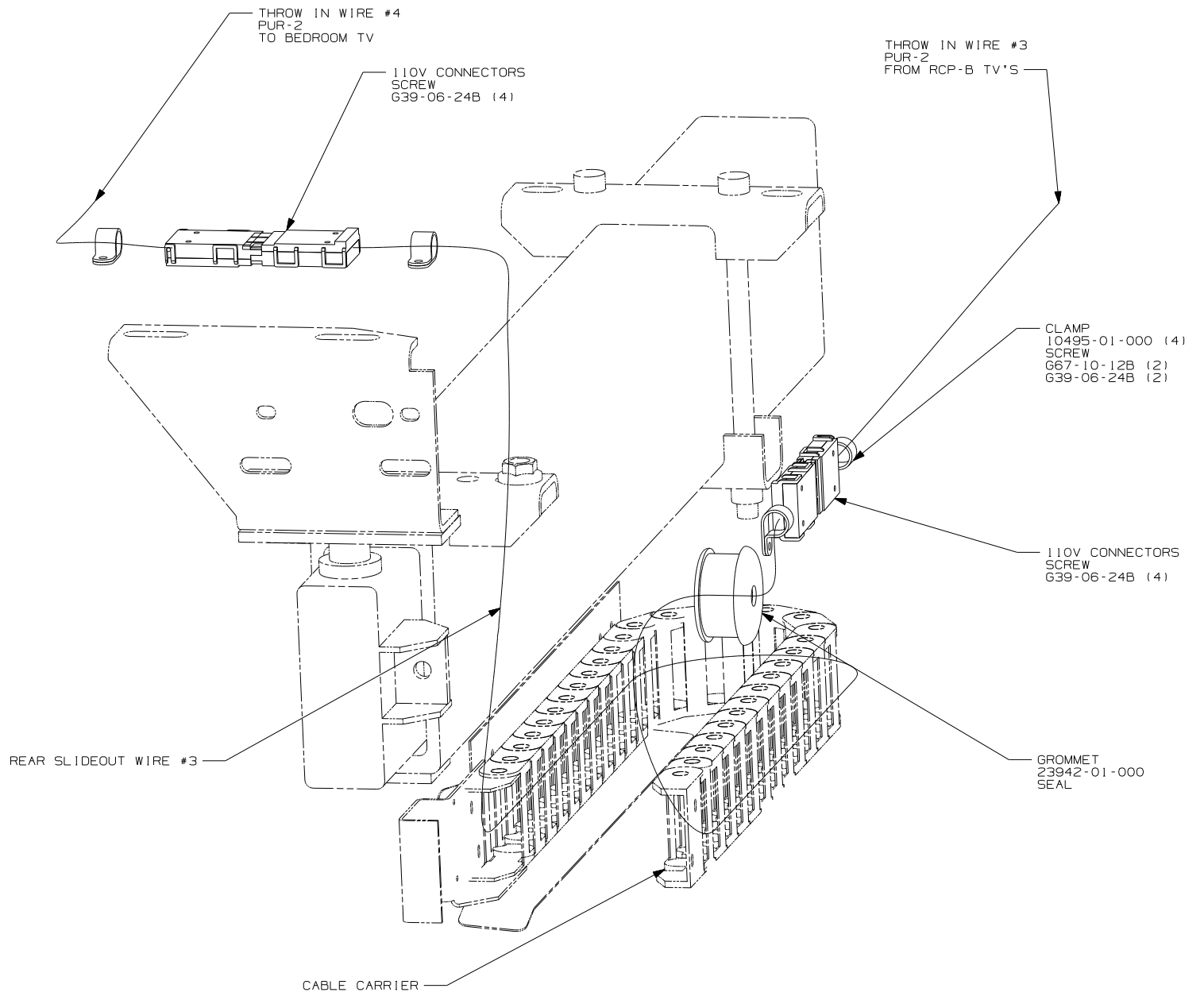
FIRST USED	
06 G37B	
DO NOT SCALE DRAWING	
TITLE: WIRING INSTL-BODY, 110V	
SHEET 3	PART NO 154201
REV	

FOR ELECTRICAL TORQUE SPECIFICATIONS SEE DWG NO. 128783-01-000

FOR ELECTRICAL CALLOUTS SEE DWG NO. 121339-01-000



DETAIL DA 4



DETAIL DB

- 5 WITH OUT 49M .
- 4 FOR MORE INFORMATION SEE LOAD CENTER/ATS ASM.
- 3 MAKE THE LOOP AS SMALL AS POSSIBLE WHEN SLIDEOUT IS COMPLETELY RETRACTED.

2. RUN 12V WIRE ALONG WITH REAR SLIDEOUT WIRE.
 1. WIRE MUST BE ROUTED THROUGH CLAMPS AS SHOWN.
- NOTES:

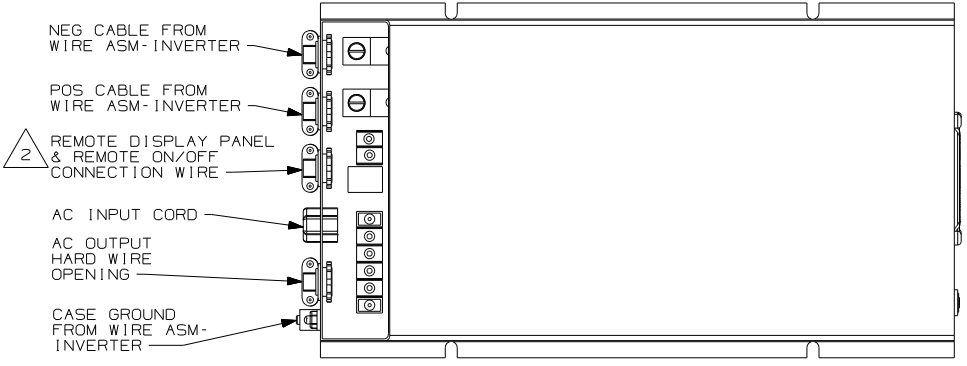
- 49M SLEEP NUMBER BED-QUEEN SIZE
- 78J ELECTRICAL SYSTEM - 50 AMP
- 265 CODES/STANDARDS - CSA/CMVSS
- 1B1 CODES/STANDARDS - USA
- 12D ELECTRICAL SYSTEM - 30 AMP

12D 1B1 265 78J

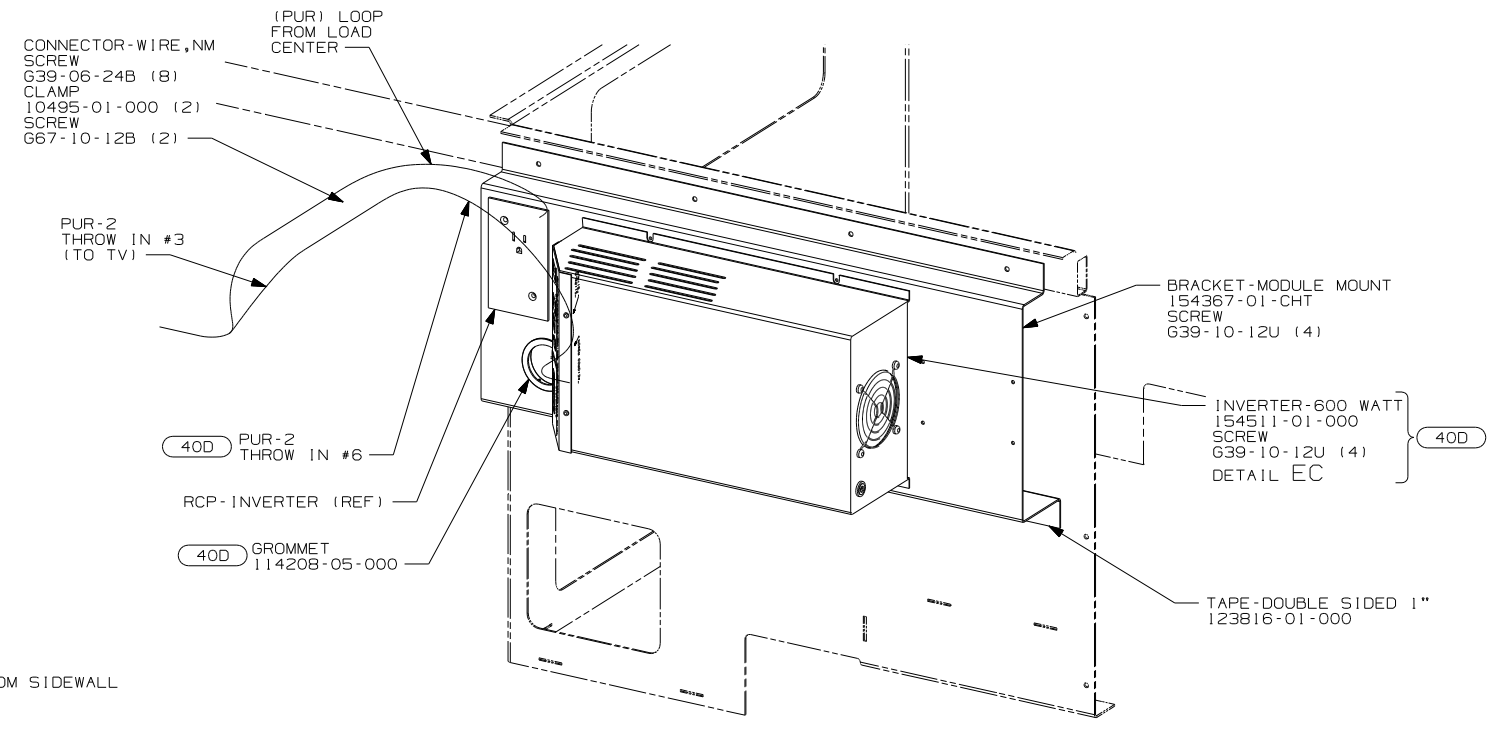
FOR ELECTRICAL TORQUE SPECIFICATIONS SEE DWG NO. 128783-01-000

X-X FOR ELECTRICAL CALLOUTS SEE DWG NO. 121339-01-000

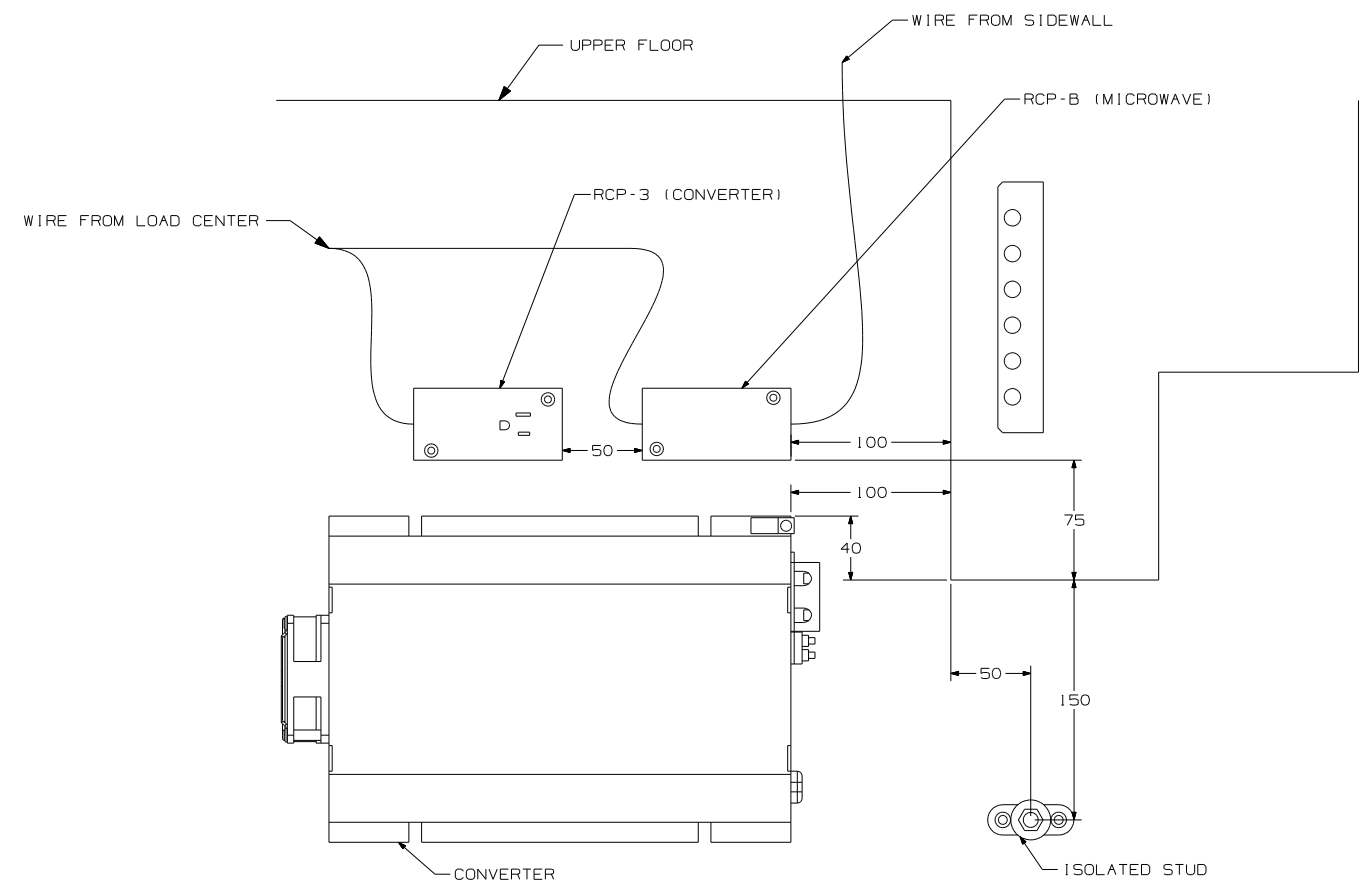
FIRST USED	
06 G37B	
DO NOT SCALE DRAWING	
TITLE:	
WIRING INSTL-BODY, 110V	
SHEET 4	PART NO
	154201
	REV



DETAIL EC



VIEW EB



DETAIL EA

2 WB FROM WIRE ASM-COACH TO PUR WIRE FROM INVERTER.

1 FOR MORE INFORMATION SEE LOAD CENTER/ATS ASM.

NOTES:

FOR ELECTRICAL TORQUE SPECIFICATIONS SEE DWG NO. 128783-01-000

X-X FOR ELECTRICAL CALLOUTS SEE DWG NO. 121339-01-000

FIRST USED	06 G37B
DO NOT SCALE DRAWING	
TITLE:	WIRING INSTL-BODY, 110V
SHEET 5	PART NO 154201 REV