



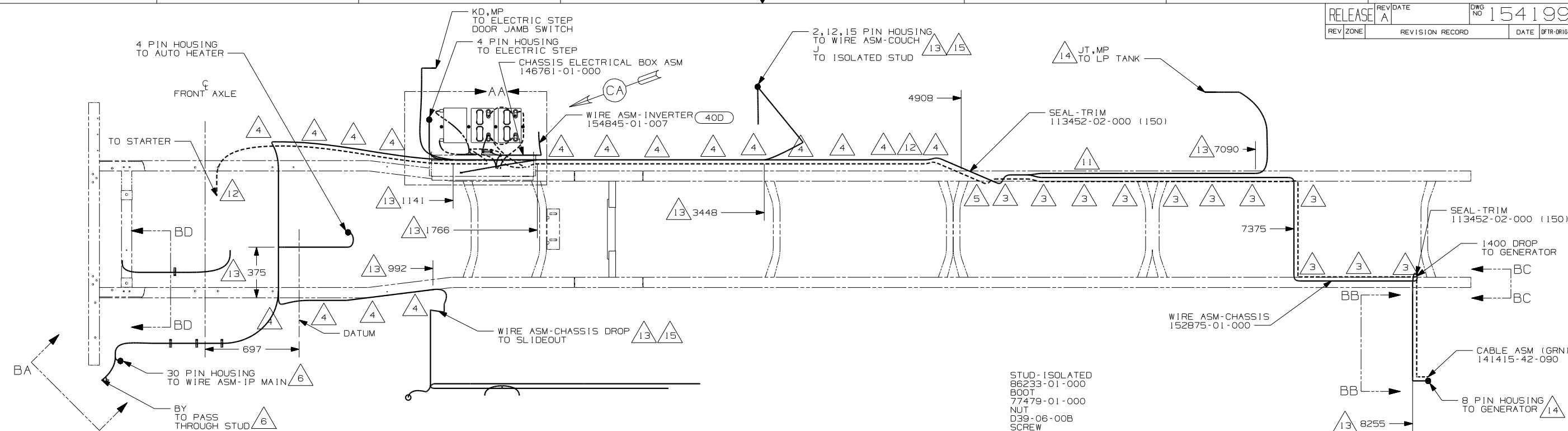
DANGER

Danger of electrical shock, burns or death. Always remove all power sources before attempting any repair, service or diagnostic work. Power can be present from shore power, generator, inverter or battery. All power sources must be disabled and secured before performing any service.



CAUTION

If you lack the skills, tools or equipment to perform diagnostic or repair work leave such work to an authorized Winnebago Industries dealer or other qualified shop.

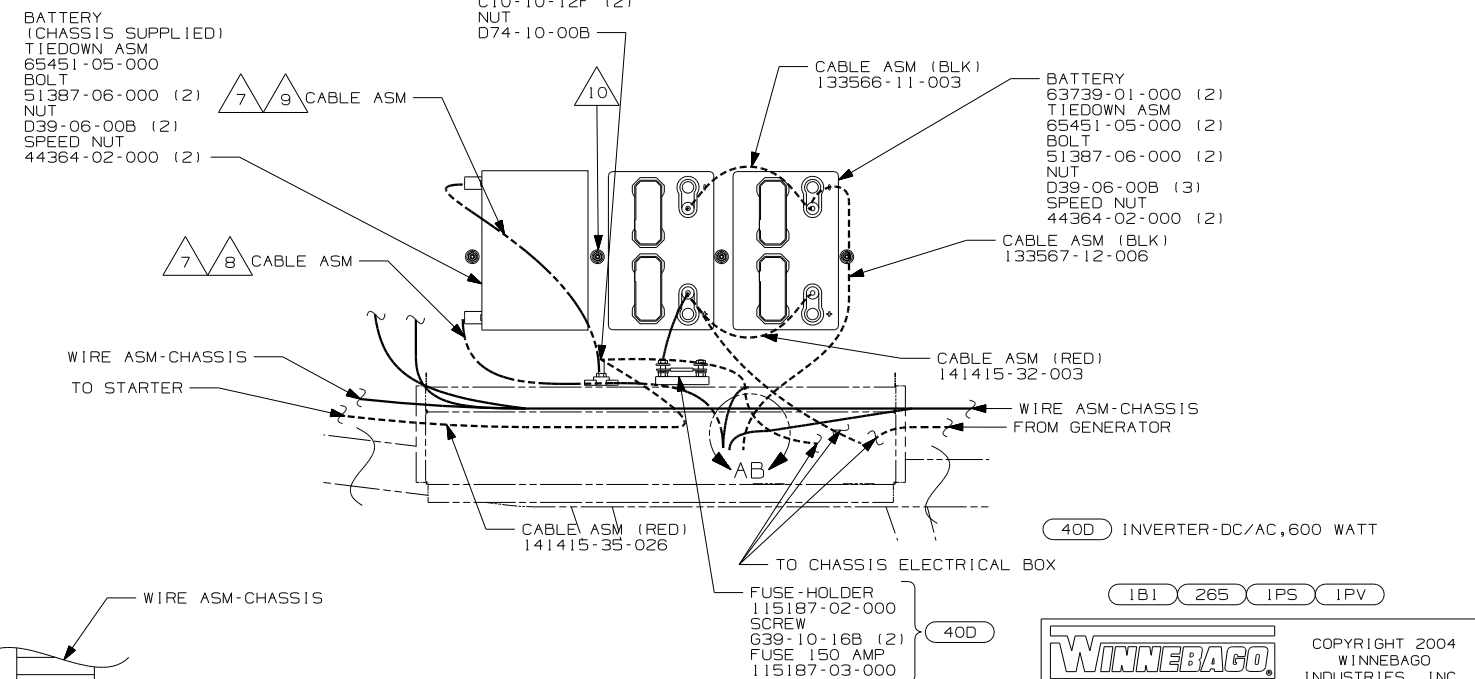


- 15 SEE WIRING INSTL-BODY,12V FOR ADDITIONAL INFORMATION.
- 14 COIL UP EXCESS WIRE AND TIE BACK TO WIRE ASM WITH WIRE TIE 8343-02-000.
- 13 LOCATION FOR 12V DROPS. BECAUSE THE WIRE HARNESS IS STANDARDIZED THE DROP MAY BE ROUTED TO ANOTHER LOCATION THAT CAN DIFFER FROM THE ORIGINAL DROP LOCATION.
- 12 SECURE SO WIRES DO NOT CONTACT EXHAUST.
- 11 ROUTE WIRES & CABLE OVER SPRING HANGER AT THIS POINT.
- 10 USE TWO NUTS HERE TO ACCOUNT FOR BATTERY HEIGHT DIFFERENCE.
- 9 LOCATE CHASSIS SUPPLIED RED WIRES TO ISOLATED STUD, CUT AND ADD TERMINALS 68070-01-000 (2) TO THE CUT ENDS.
- 8 LOCATE CHASSIS SUPPLIED GROUND WIRES TO GROUND STUD, CUT AND ADD TERMINALS 8348-01-000 (2) TO THE CUT ENDS.
- 7 SUPPLIED WITH CHASSIS.
- 6 SEE WIRING INSTL-FRONT END FOR ADDITIONAL INFORMATION.
- 5 ROUTE WIRES & CABLE INSIDE CHASSIS RAIL AT THIS POINT AND T
- 4 CLAMP 83610-03-000, SCREW G39-08-12B.
- 3 CLAMP 83610-01-000, SCREW G39-08-12B.

2. SECURE CONDUIT 41953-09, -10, -11, -13, AND -14
OVER ALL WIRES IN CONTACT WITH SHARP EDGES.

1. LEGEND: ————— WINNEBAGO: - - - - - CABLE: - - - - - CHASSIS SUPPLIED WIRING.

NOTES:



DETAIL AA

- (265) CODES/STANDARDS - CSA/CMVSS
- (IPV) WORKHORSE 24,000# - 22.5 TIRE
- (IPS) WORKHORSE 22,000# - 22.5 TIRE
- (IB1) CODES/STANDARDS - USA

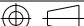
FOR ELECTRICAL
TORQUE
SPECIFICATIONS
SEE DWG NO.
128783-01-000

	FOR ELECTRICAL CALLOUTS SEE DWG NO. 121339-01-000
---	---

IBI 265 IPS IPV



COPYRIGHT 2004
WINNEBAGO
INDUSTRIES, INC.

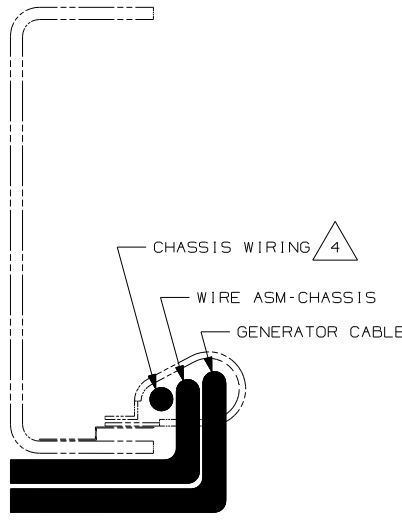
DFT#		ORIG. DATE	
CHK#		ALL DIMENSIONS ARE IN MILLIMETERS	
P.E.			
M.E.		FIRST USED	
DSNR		06 G37B	
UNSPECIFIED TOLERANCES ARE:		MATERIAL:	
WHOLE DIM (X)	± 3		
ONE-PLACE (X,X)	± 1.5		
TWO-PLACE (X,XX)	0,50		
ANGLE	± 1°		
THIRD ANGLE PROJECTION			

DO NOT SCALE DRAWING

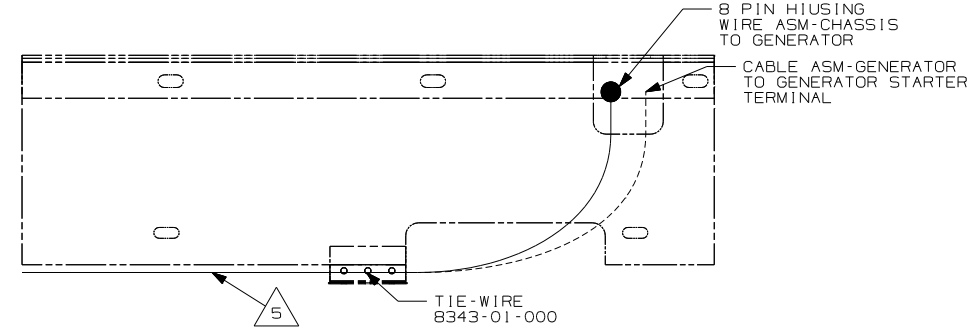
TITLE: WIRING INSTL-CHASSIS

ET 1 OF 3 PART NO 154199

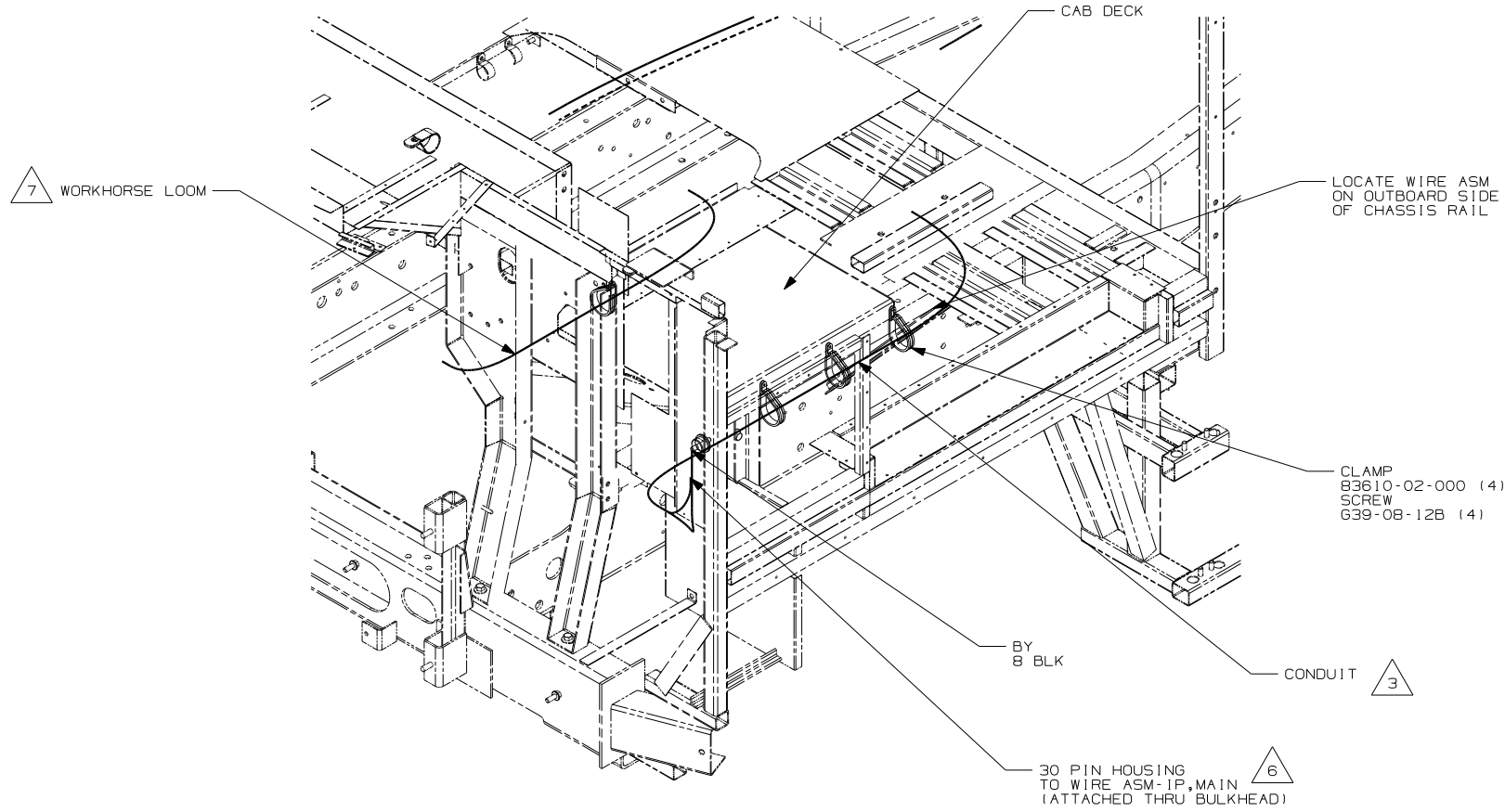
REF :	1 8/5/2005
-------	------------



VIEW BC-BC



VIEW BB-BB



VIEW BA-BA

- 7 CLAMP WORKHORSE ENGINE HARNESS TO CAB DECK TO PROTECT HARNESS FROM DAMAGE.
- 6 SEE WIRING INSTL-FRONT END FOR ADDITIONAL INFORMATION.
- 5 SECURE SO WIRES DO NOT CONTACT EXHAUST.
- 4 SUPPLIED WITH CHASSIS.
- 3 COVER WITH CONDUIT 41953-10-000 AND 41953-11-000 AS REQUIRED.

2. SECURE CONDUIT 41953-09, -10, -11, -13, AND -14 OVER ALL WIRES IN CONTACT WITH SHARP EDGES.

1. LEGEND: ——— WINNEBAGO: - - - - - CABLE: - - - - - CHASSIS SUPPLIED WIRING.

NOTES:

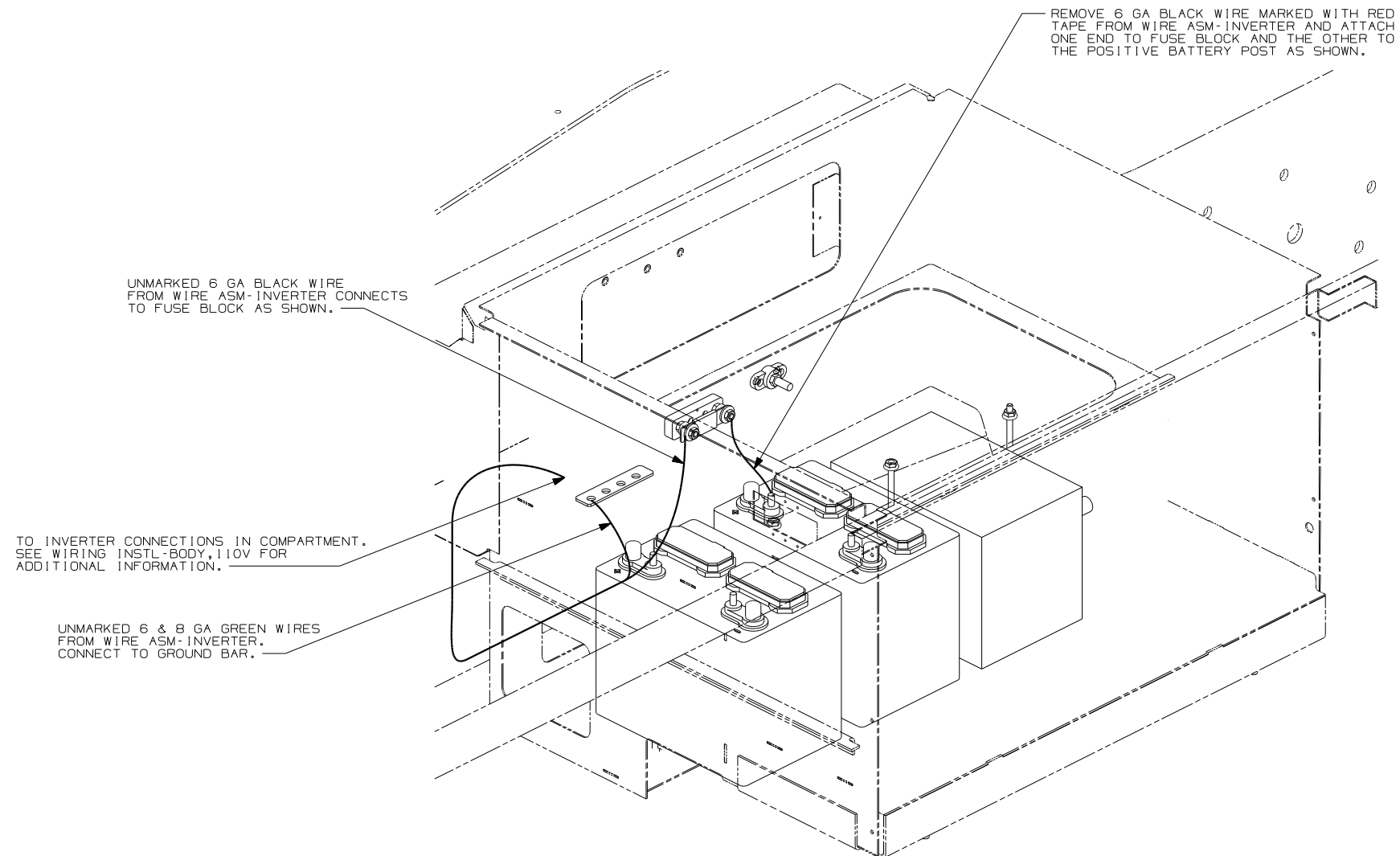
- 265 CODES/STANDARDS - CSA/CMVSS
- 1PV WORKHORSE 24,000# - 22.5 TIRE
- 1PS WORKHORSE 22,000# - 22.5 TIRE
- 1B1 CODES/STANDARDS - USA

1B1 265 1PS 1PV

FIRST USED	06 G37B
DO NOT SCALE DRAWING	
TITLE	WIRING INSTL-CHASSIS
SHEET 2	PART NO 154199

FOR ELECTRICAL TORQUE SPECIFICATIONS SEE DWG NO. 128783-01-000

FOR ELECTRICAL CALLOUTS SEE DWG NO. 121339-01-000



VIEW CA 40D

2. SECURE CONDUIT 41953, TAB AS REQUIRED, OVER ALL WIRES IN CONTACT WITH SHARP EDGES.

1. LEGEND: — WINNEBAGO: - - - - - CABLE: - - - - - CHASSIS SUPPLIED WIRING.

NOTES:

FOR ELECTRICAL
TORQUE
SPECIFICATIONS
SEE DWG NO.
128783-01-000

FOR ELECTRICAL
CALLOUTS
SEE DWG NO.
121339-01-000

40D INVERTER-DC/AC, 600 WATT
265 CODES/STANDARDS - CSA/CMVSS
1B1 CODES/STANDARDS - USA

1B1 265

FIRST USED
06 G37B
DO NOT SCALE DRAWING
TITLE: WIRING INSTL-CHASSIS
SHEET 3 PART NO 154199