

- NOTES:
1. SLOPE OF HORIZONTAL PIPING TO BE MIN 3 PER 305 mm.
 2. SLOPE OF TRAP ARM MUST BE 6 PER 305 mm.
 3. ALL PIPE AND FITTINGS TO BE ASSEMBLED WITH SOLVENT 4020-01-000 (US) 4020-02 (CAN).
 4. ALL EXTERIOR OPENINGS AROUND PIPE TO BE SEALED WITH 110744-01-000.
 5. SEAL AROUND SHOWER WITH SILICONE.
 6. VENT PIPE MUST PROJECT 51 MIN AND 64 MAX ABOVE ROOF FOR PROPER FIT AND FUNCTION.
 7. SEE DWG 61607-01-000 FOR INSTL OF GROMMET.
 8. SECURE PIPES TO CABINET USIN WIRE TIE 108046-02-000 AND SCREW G67-10-12U (8).
 9. SECURE PIPES TO FLOOR USING BRACKET 136878-01-CHT (3) CLAMP 62401-02-000 (3) AND SCREW G67-10-12B (3).

(1B) CODES/STANDARDS USA
 (265) CODES/STDS-CSA/CMVSS

WINNEBAGO		COPYRIGHT 2005 WINNEBAGO INDUSTRIES, INC.	
DFTR	ORIG. DATE	ALL DIMENSIONS ARE IN MILLIMETERS	
CHKR		FIRST USED	
P.E.		06 G35U	
M.E.		UNSPECIFIED TOLERANCES ARE:	
DSNR		MATERIAL:	
		WHOLE DIM (X)	: 5
		ONE-PLACE (X.X)	:
		TWO-PLACE (X.XX)	:
		ANGLE	:
		THIRD ANGLE PROJECTION	
DO NOT SCALE DRAWING			
TITLE:		DRAINAGE SYSTEM INSTL	
SHEET 1 OF 3	PART NO	154947	
REF:	1 9/26/2005		

(X-X)
 FOR
 DRAINAGE
 CALLOUTS
 SEE DWG NO
 116229-01-000

SINK -SMC,DOUBLE
148870-02-CHT
STRAINER
92303-01-000 (2)
ANGLE
140002-01-CHT (10)
SCREW
G67-10-08B (8)
SEAL (A/R)

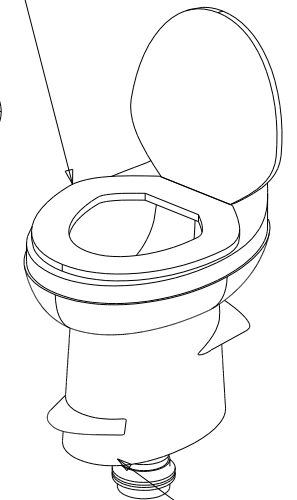
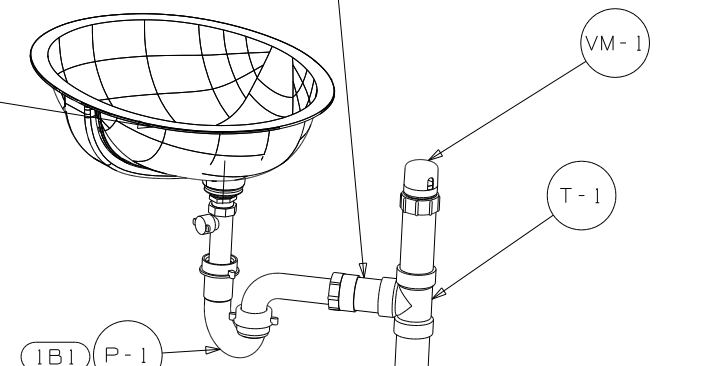
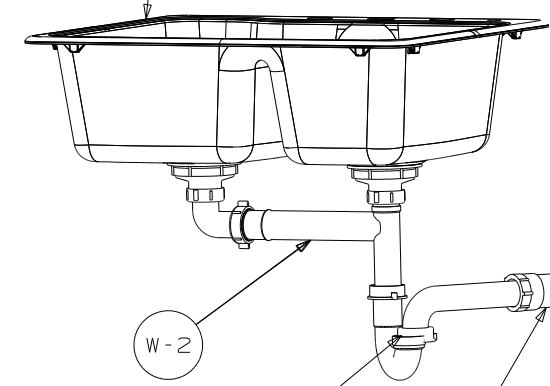
SINK
155318-01-CHT
TAILPIECE
(SUPPLIED W/FAUCET)
SCREW
G67-08-12U (12)
ANGLE
153338-02-CHT (6)
WASHER FOAM
147930-01-000

SHOWER INSTL-ENCLOSURE
147874-01-000
DRAIN
66440-01-000
SEALER
696400-01-000
NUT
130403-01-000
TAILPIECE
11069-06-000
WASHER
127440-02-CHT

TOILET
152830-01-CHT
SCREW
87721-01-000 (8)

CLAMP
62401-05-000 (2)
BRACKET
95061-01-000 (2)
SCREW
G67-10-10B (2)

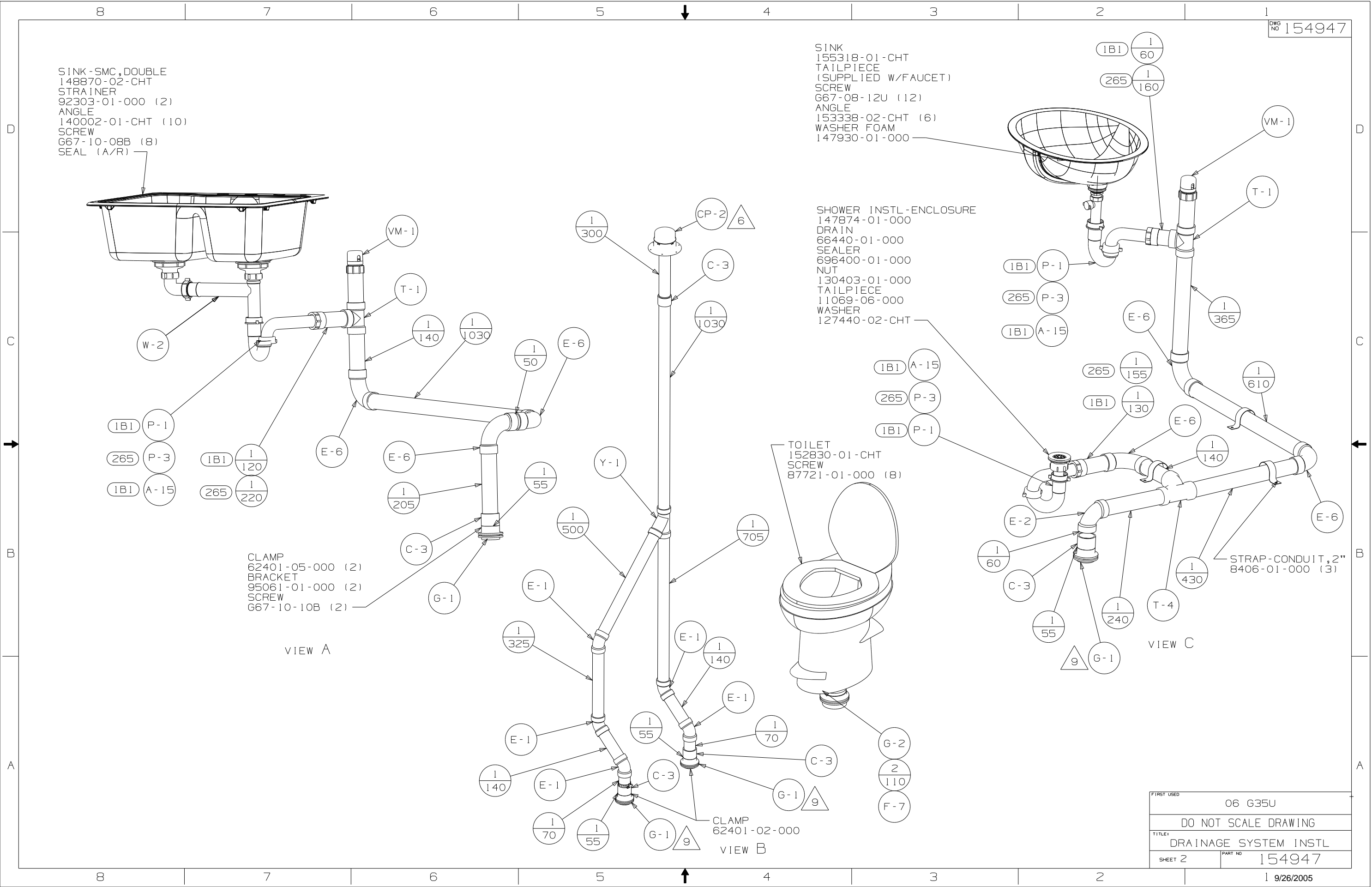
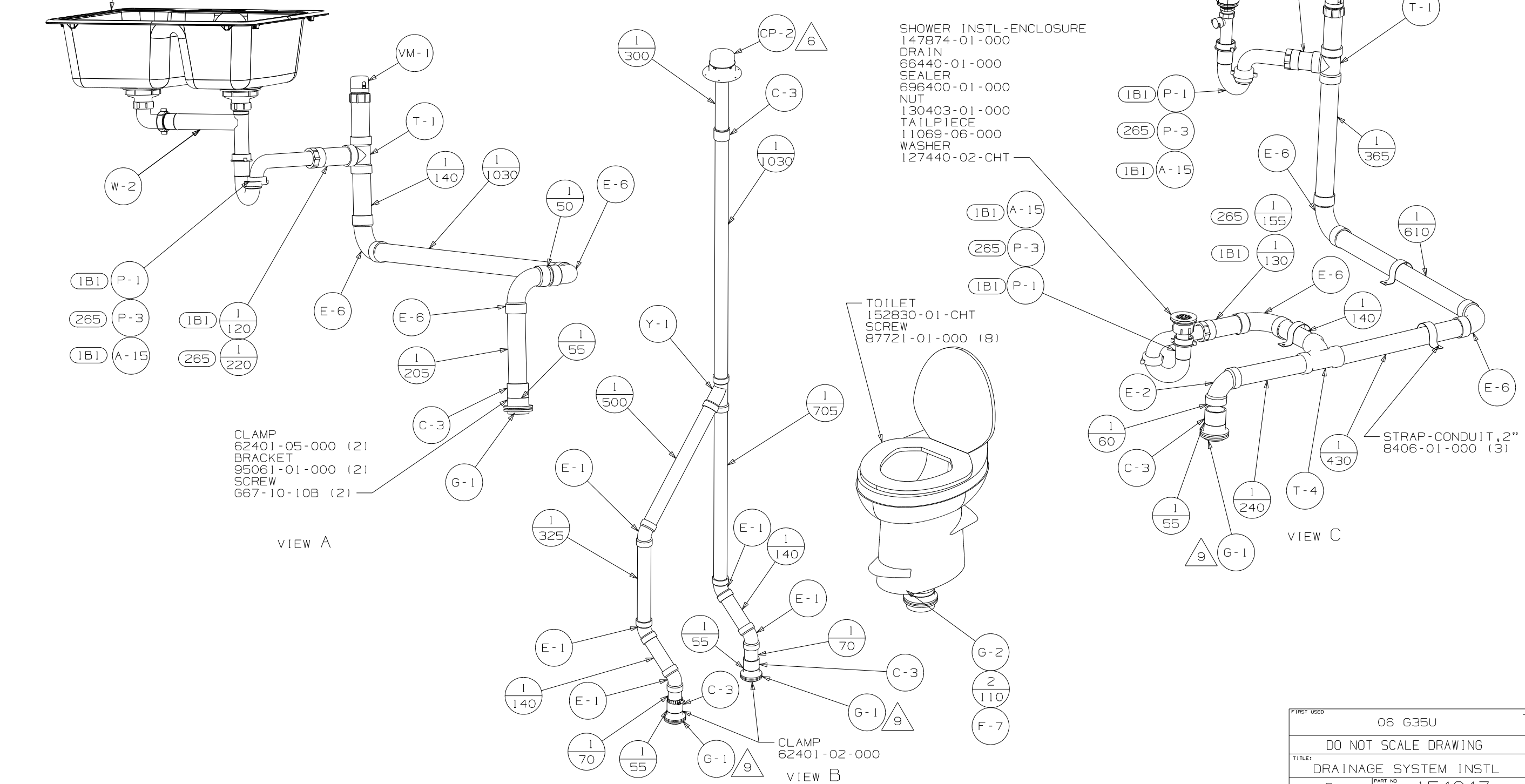
FIRST USED	06 G35U
DO NOT SCALE DRAWING	
TITLE	DRAINAGE SYSTEM INSTL
SHEET 2	PART NO 154947

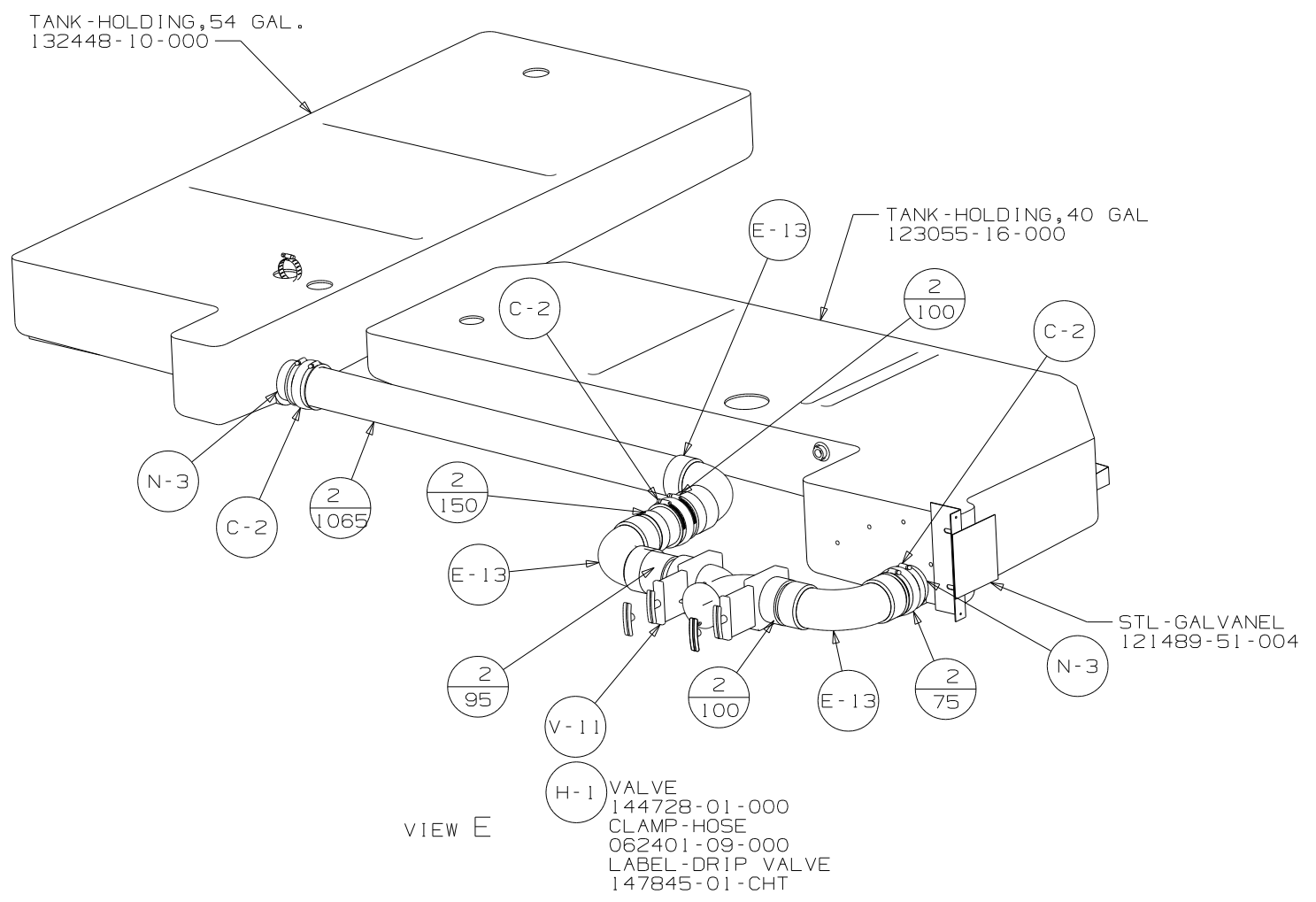
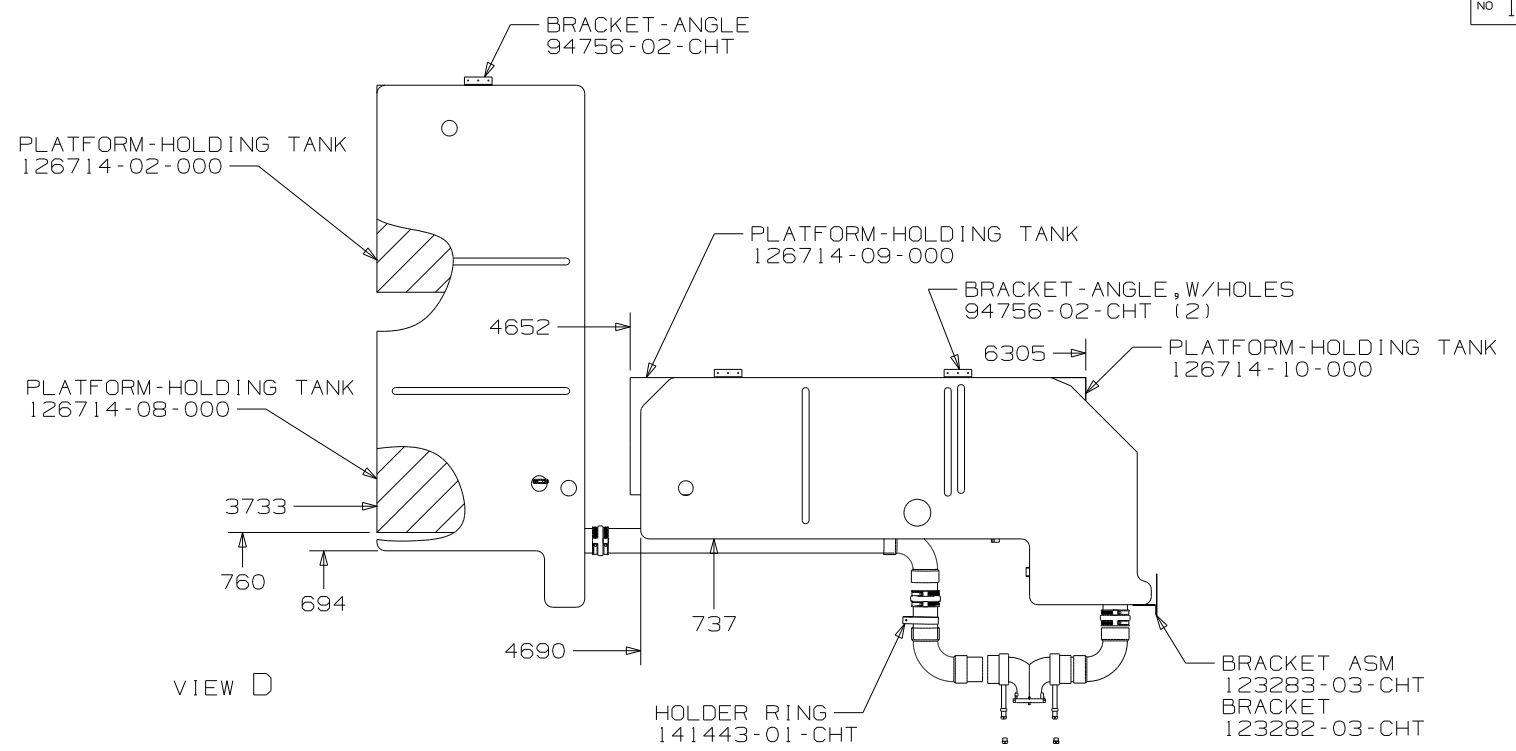
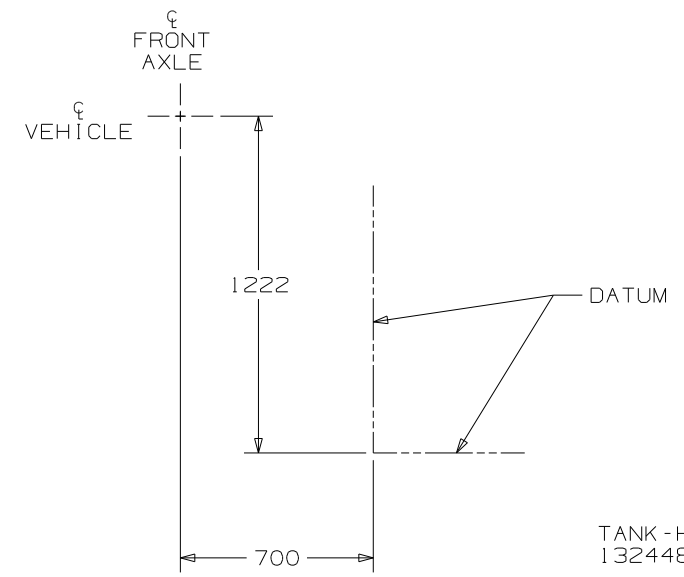


VIEW A

VIEW C

VIEW B

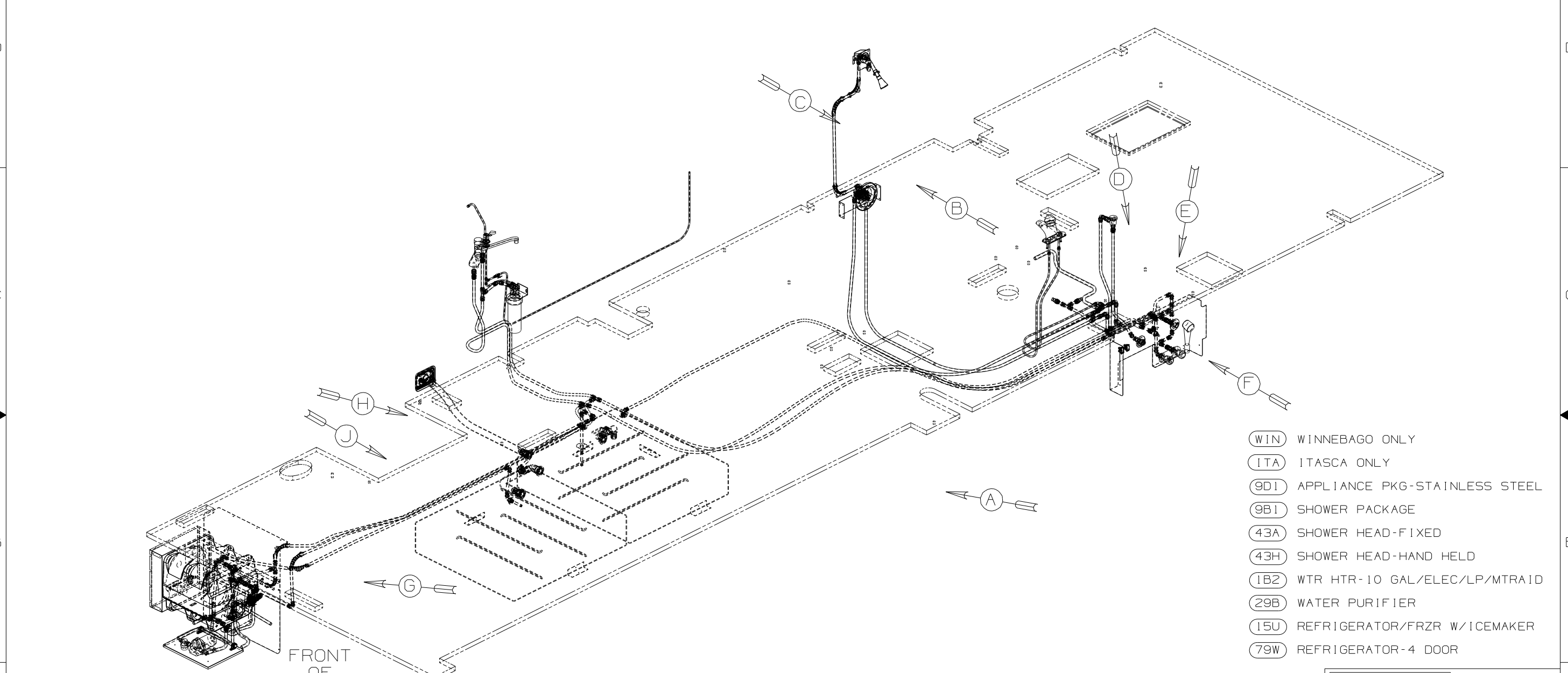




FIRST USED	06 G35U
DO NOT SCALE DRAWING	
TITLE	DRAINAGE SYSTEM INSTL
SHEET 3	PART NO 154947

DWG NO	----
154955-01	(WIN)
154955-02	(ITA)

RELEASE	REV DATE	DWG NO
A		154955
REV ZONE	REVISION RECORD	DATE

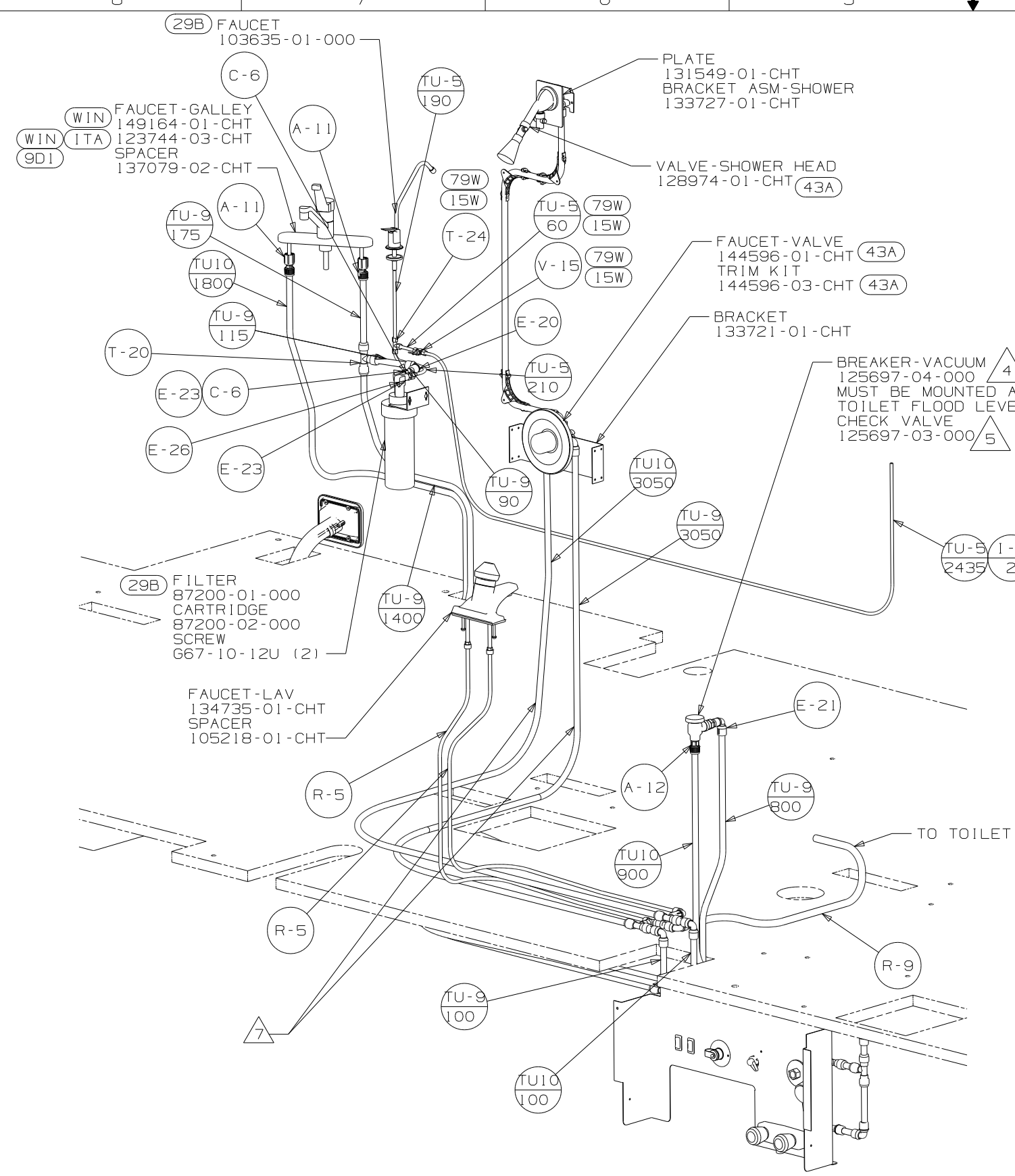


- (WIN) WINNEBAGO ONLY
- (ITA) ITASCA ONLY
- (9D1) APPLIANCE PKG-STAINLESS STEEL
- (9B1) SHOWER PACKAGE
- (43A) SHOWER HEAD-FIXED
- (43H) SHOWER HEAD-HAND HELD
- (1B2) WTR HTR-10 GAL/ELEC/LP/MTRAIID
- (29B) WATER PURIFIER
- (15U) REFRIGERATOR/FRZR W/ICEMAKER
- (79W) REFRIGERATOR-4 DOOR

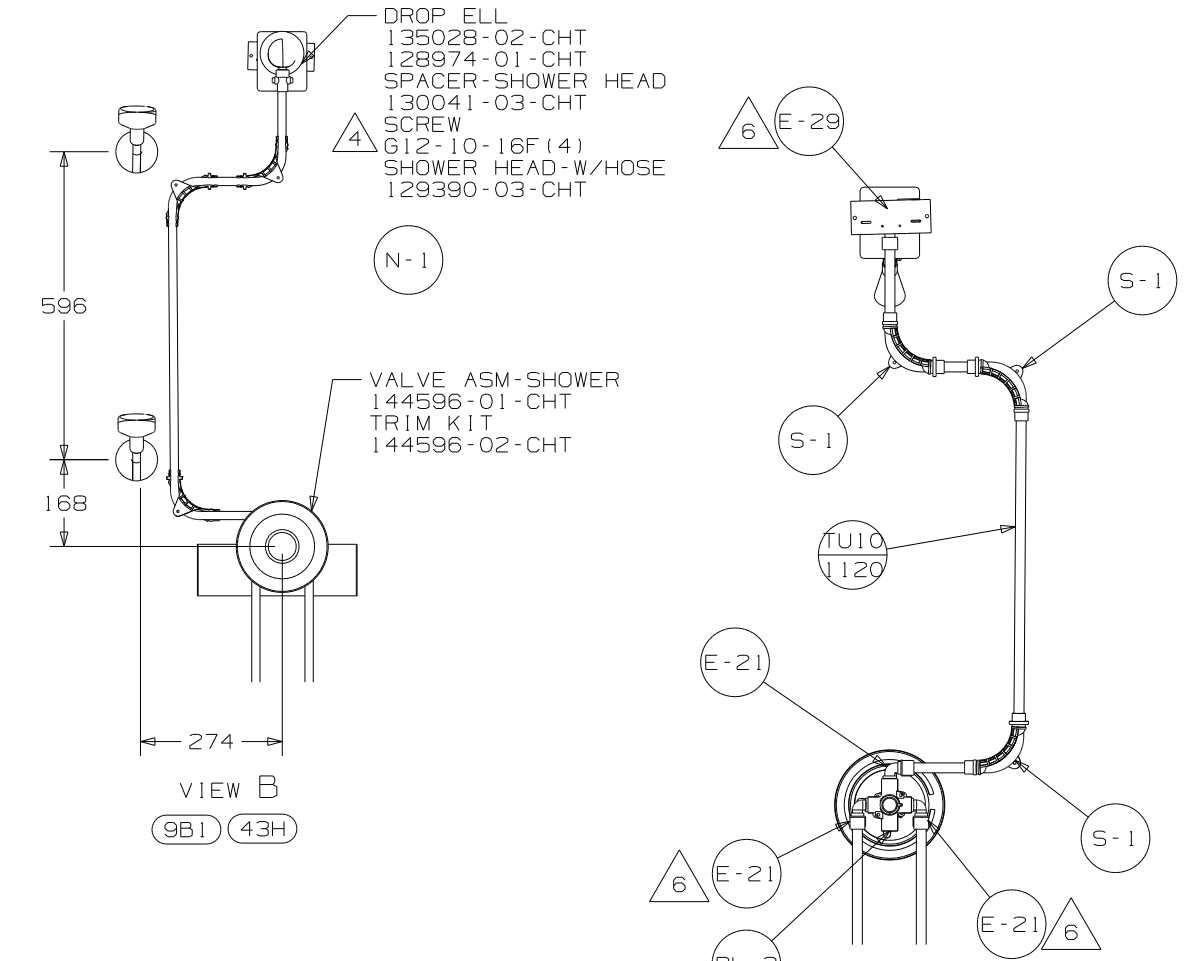
- NOTES:
- 7 ADD LADDER FOAM SCRAP.
 - 6 ADD TEFLON TAPE 10405-01-000 TO FITTING.
 - 5 ADD TEFLON TAPE 10405-02-000 TO FITTING.
 - 4 USED IN PLACE OF SUPPLIED SCREWS TO ATTACH BRACKET TO WALL
3. ALL TUBING TO BE SECURED AT 1200 INTERVALS MAXIMUM WITH CLAMP 10495-01-000 OR CLIP 9151-01-000 AND SCREW G67-10-12B.
2. TUBING TO BE INSTALLED WITH SUFFICIENT SLOPE TO PROVIDE DRAINAGE TO NEAREST VALVE.
1. PLASTIC FITTINGS TO BE SEALED WITH SEALANT 84456-01-000.

(X-X)
FOR WATER CALLOUTS SEE DWG NO 116230-01-000

WINNEBAGO		COPYRIGHT 2006 WINNEBAGO INDUSTRIES, INC.	
DFT	ORIG. DATE	ALL DIMENSIONS ARE IN MILLIMETERS	
CHKR		MATERIAL:	
P.E.		UNSPECIFIED TOLERANCES ARE:	
M.E.	FIRST USED	WHOLE DIM (X)	: 7
DSNR	06 G35U	ONE-PLACE (X.X)	:
		TWO-PLACE (X.XX)	:
		ANGLE	:
THIRD ANGLE PROJECTION			
DO NOT SCALE DRAWING			
TITLE: WATER SYSTEM INSTL			
SHEET 1 OF 4	PART NO 154955	REV	
REF:		1 6/13/2006	

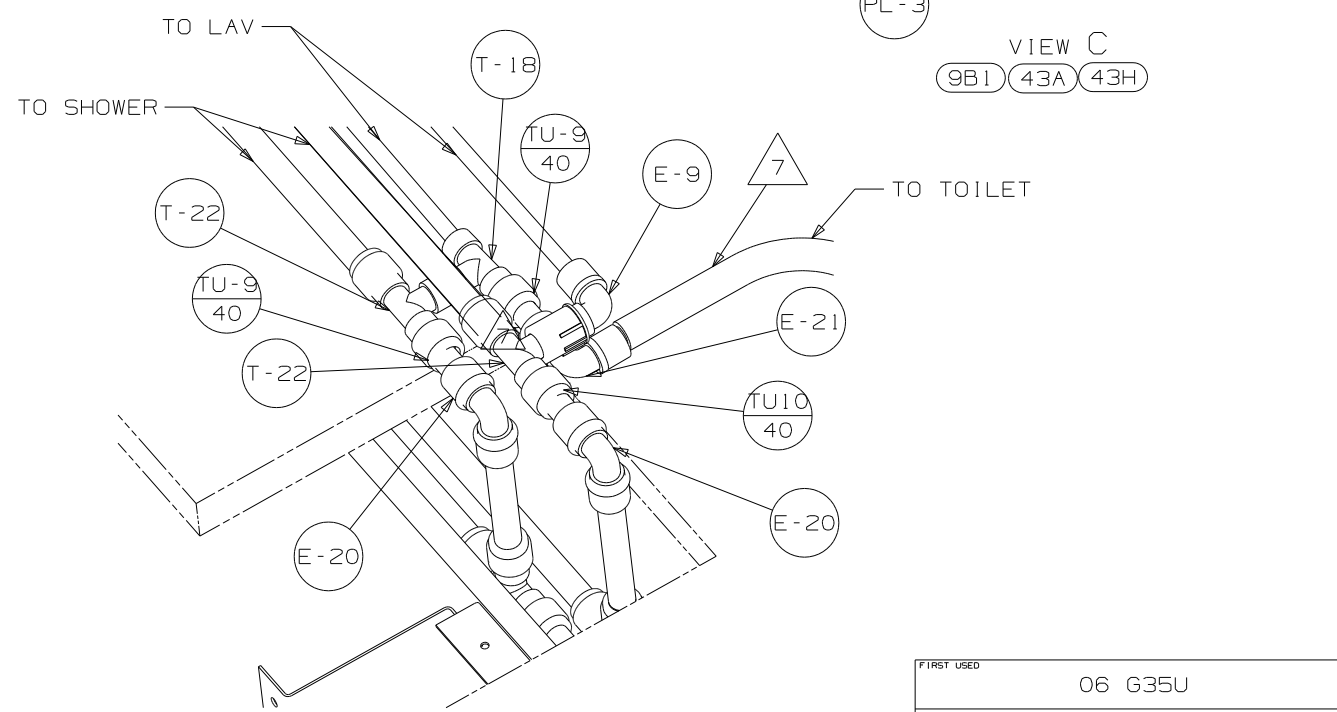


VIEW A



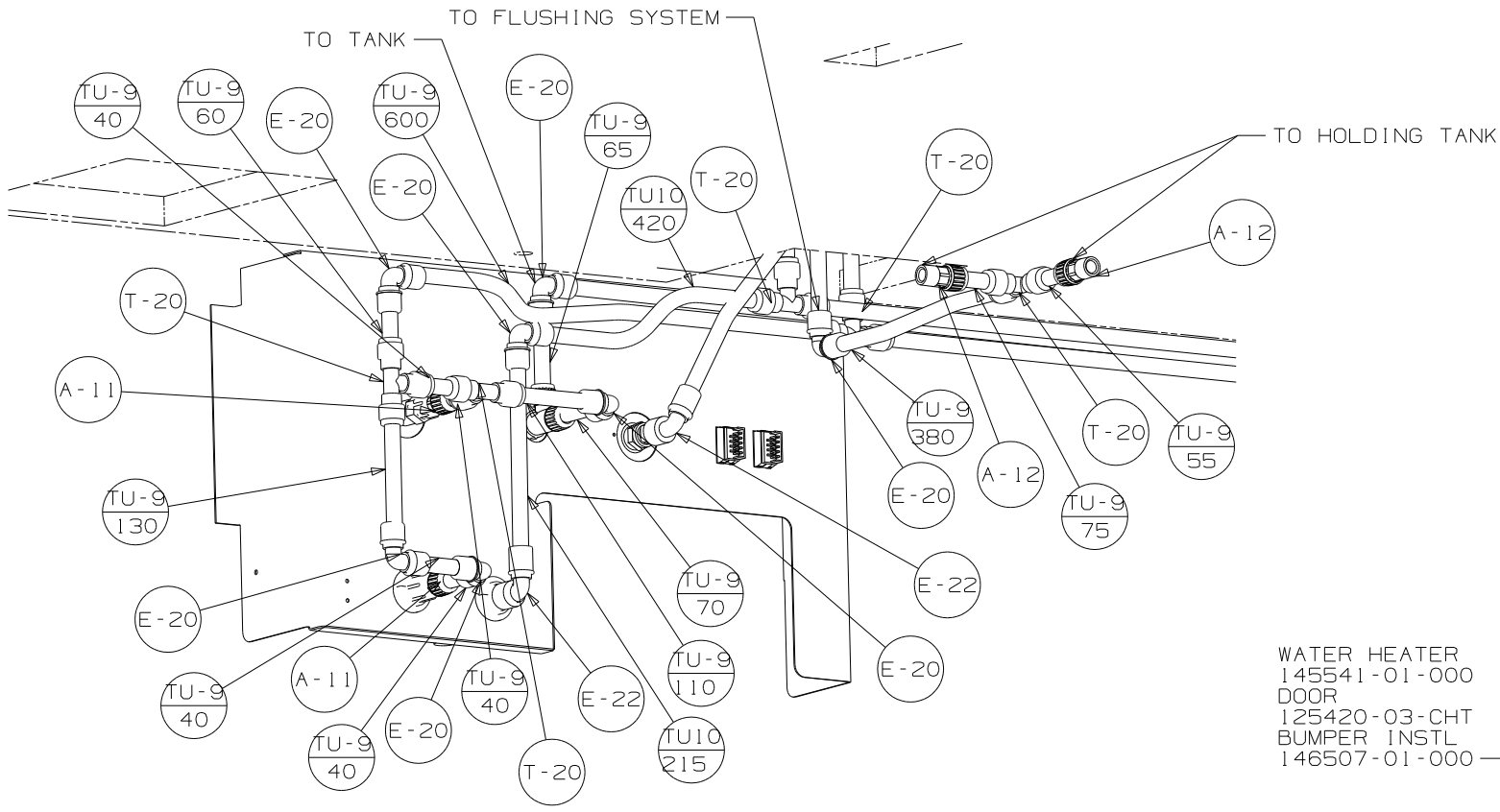
VIEW B

VIEW C

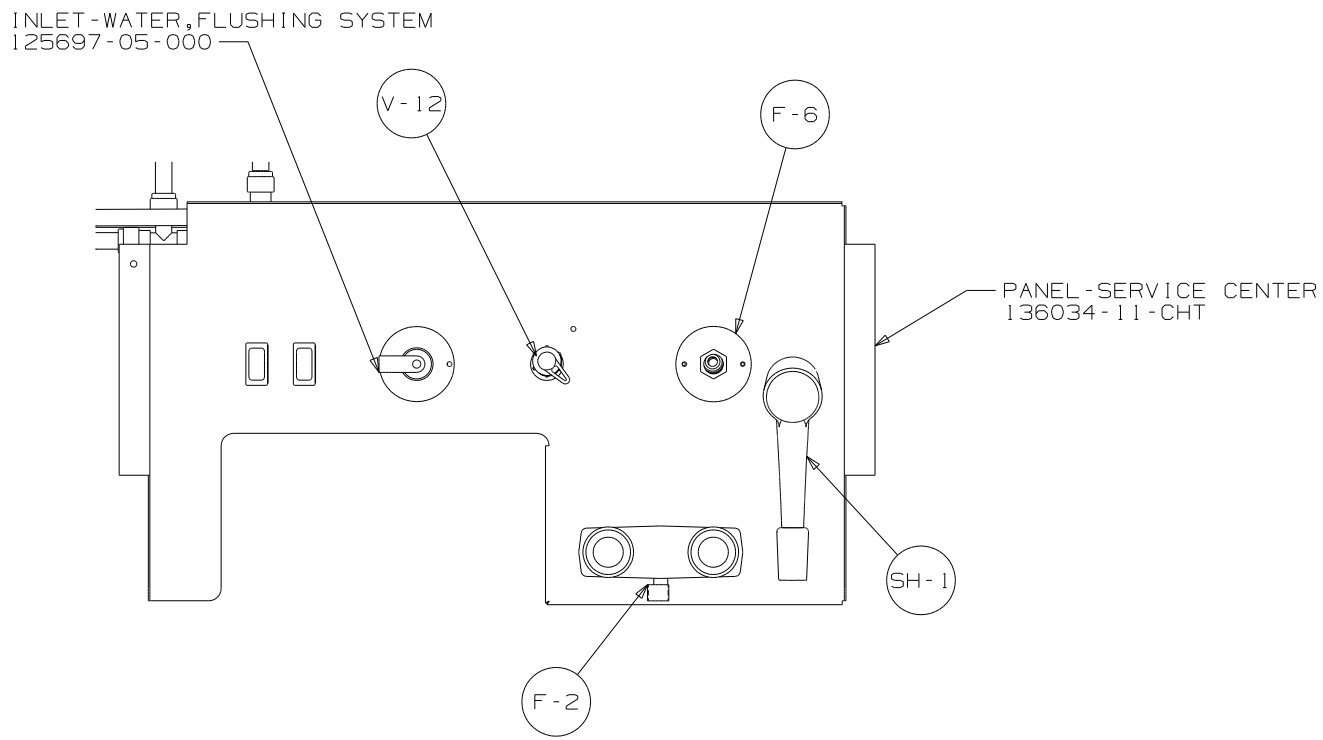


VIEW D

FIRST USED	06 G35U		
TITLE	DO NOT SCALE DRAWING		
SHEET 2	PART NO	154955	REV
			1 6/13/2006

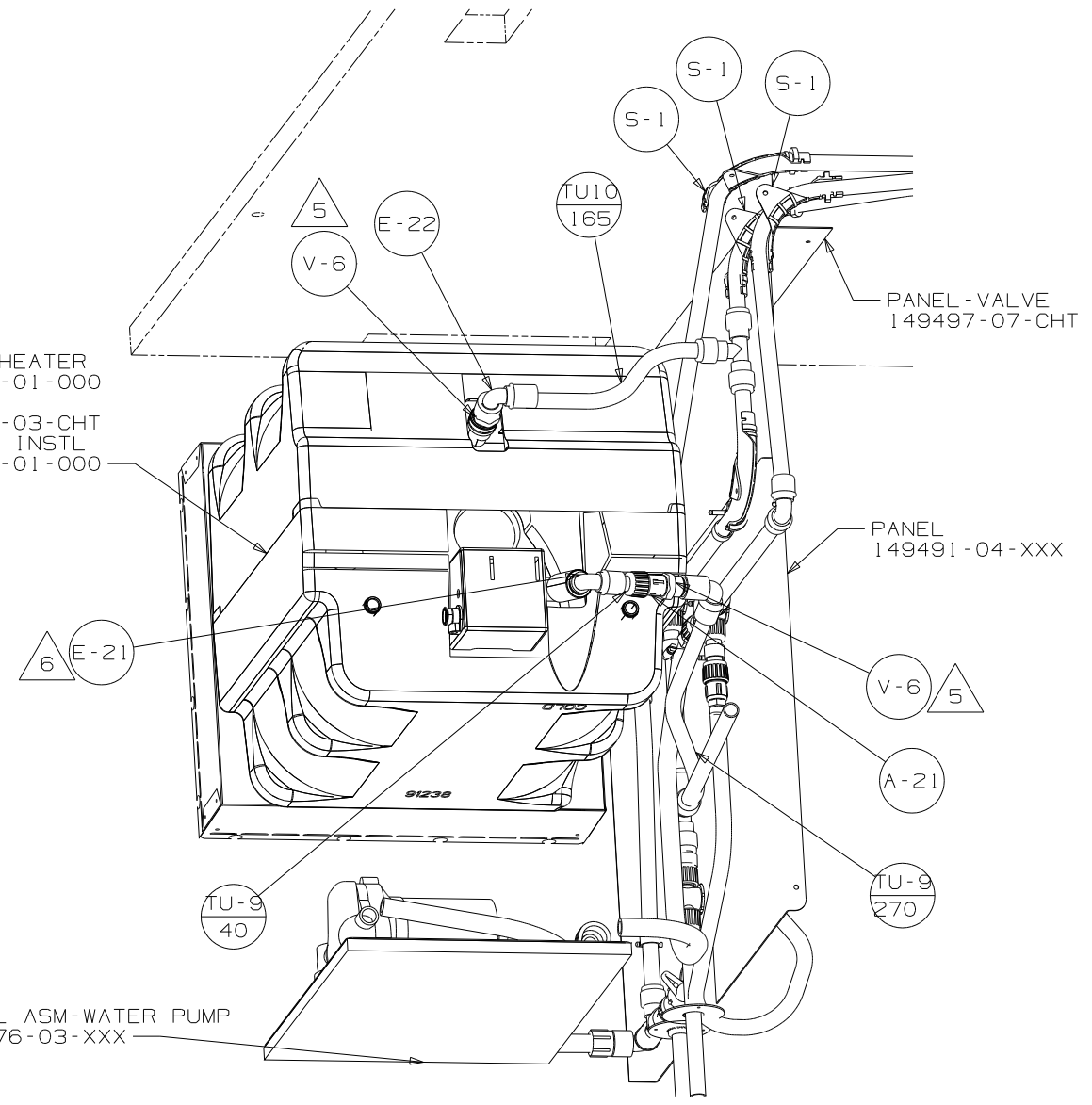


VIEW E

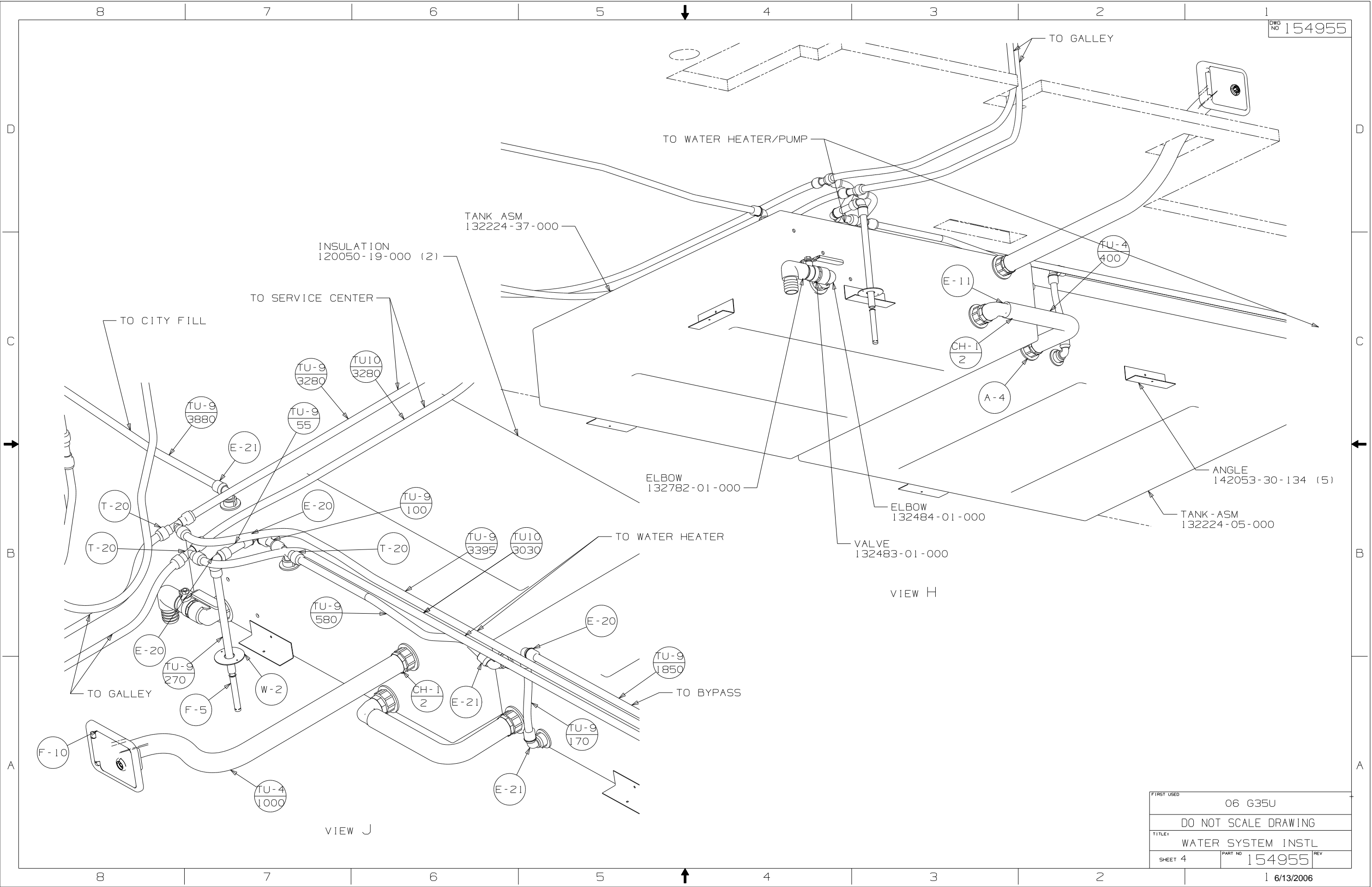


VIEW F

WATER HEATER
145541-01-000
DOOR
125420-03-CHT
BUMPER INSTL
146507-01-000



FIRST USED	06 G35U		
TITLE	DO NOT SCALE DRAWING		
	WATER SYSTEM INSTL		
SHEET 3	PART NO	154955	REV



VIEW H

VIEW J

FIRST USED	06 G35U	
TITLE	DO NOT SCALE DRAWING	
TITLE	WATER SYSTEM INSTL	
SHEET 4	PART NO	154955
REV		