



**DANGER**

**Danger of electrical shock, burns or death.** Always remove all power sources before attempting any repair, service or diagnostic work. Power can be present from shore power, generator, inverter or battery. All power sources must be disabled and secured before performing any service.

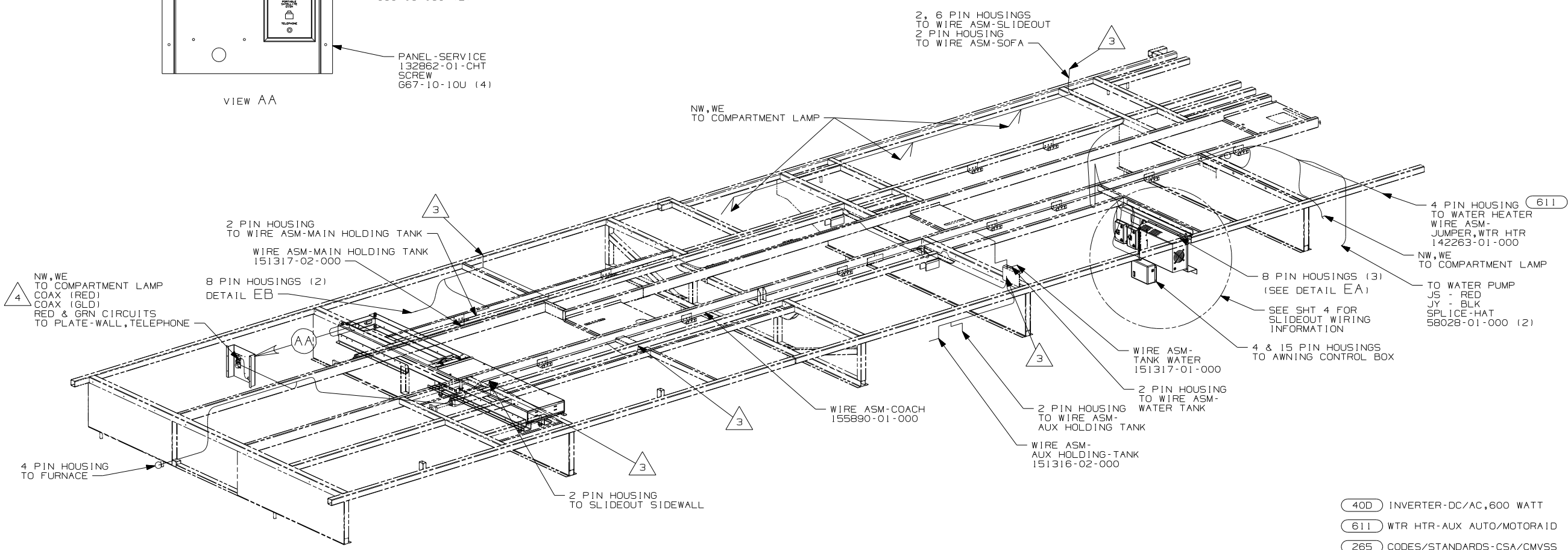
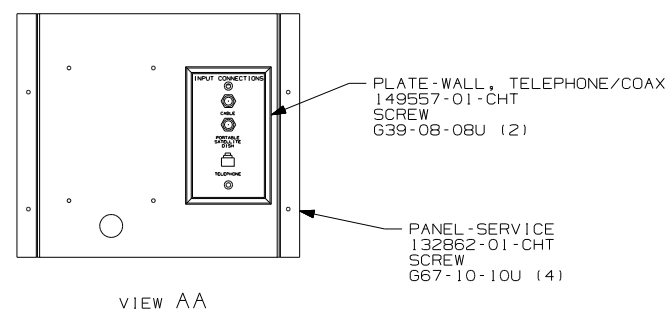


**CAUTION**

If you lack the skills, tools or equipment to perform diagnostic or repair work leave such work to an authorized Winnebago Industries dealer or other qualified shop.

DRAWING NO.	FEATURE
155785-01	(WIN)
155785-02	(ITA)

RELEASE	REV DATE	DWG NO
A		155785
REV ZONE	REVISION RECORD	DATE DFR-0R16



- (40D) INVERTER-DC/AC, 600 WATT
- (611) WTR HTR-AUX AUTO/MOTORAID
- (265) CODES/STANDARDS-CSA/CMVSS
- (1B1) CODES/STANDARDS USA

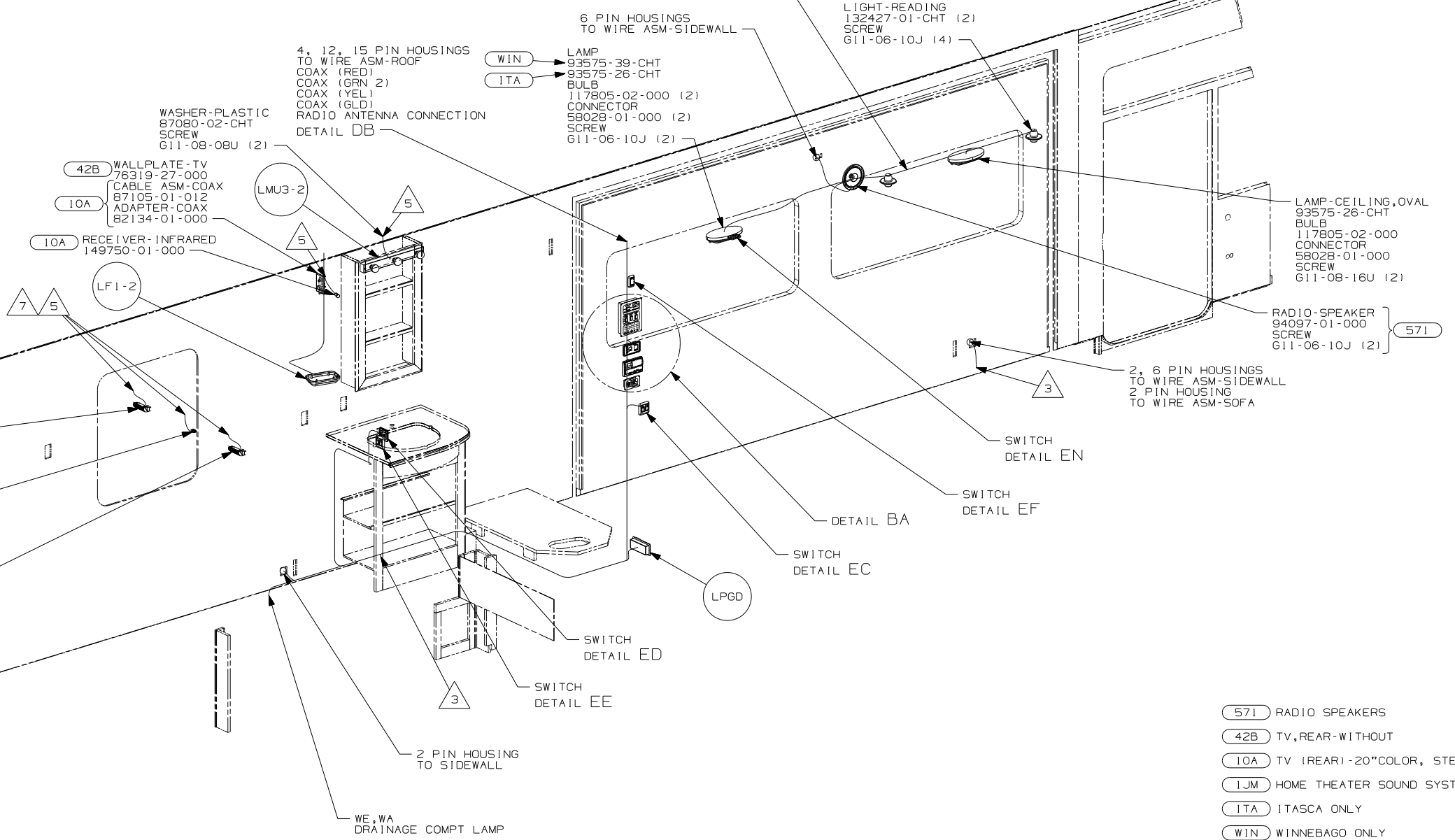
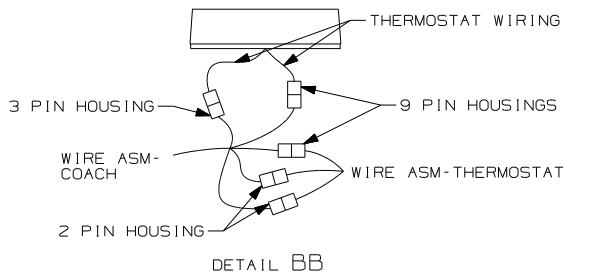
<b>WINNEBAGO</b>		COPYRIGHT 2006 WINNEBAGO INDUSTRIES, INC.	
DFTR	ORIG. DATE	ALL DIMENSIONS ARE IN MILLIMETERS	
CHKR		FIRST USED <b>06 F35D</b>	
P.E.		UNSPECIFIED TOLERANCES ARE:	
M.E.		WHOLE DIM (X)	: 3
DSNR		ONE-PLACE (X.X)	: 1.5
		TWO-PLACE (X.XX)	: 0.50
		ANGLE	: 1°
THIRD ANGLE PROJECTION		MATERIAL:	
<b>DO NOT SCALE DRAWING</b>			
TITLE: <b>WIRING INSTL-BODY, 12V</b>			
SHEET 1 of 8	PART NO	155785	REV
REF:	1 6/16/2006		

- 4 CONNECT TELEPHONE WIRE TO MATCHING COLORS ON PLATE-WALL, TELEPHONE.
- 3 WIRE PASSES THROUGH FLOOR AT THIS POINT.
2. SEE WIRING DIAGRAM-BODY, 12V FOR ADDITIONAL INFORMATION.
1. ALL WIRES TO BE CLAMPED WITH CLAMP 10495-01-000 OR WIRE TIE 8343-02-000 EVERY 600MM, UNLESS OTHERWISE SPECIFIED.

FOR ELECTRICAL  
TORQUE  
SPECIFICATIONS  
SEE DWG NO.  
128783-01-000

(X-X)  
FOR  
ELECTRICAL  
CALLOUTS  
SEE DWG NO.  
121339-01-000

- 290 MONITOR PANEL  
134940-06-CHT  
134940-08-CHT  
G11-08-08U (6)
- MONITOR PANEL-EMS  
127002-10-000  
SCREW  
G11-08-08U (2)
- 8 THERMOSTAT  
105620-18-000  
SCREW  
G13-07-12B (2)  
GASKET-THERMOSTAT  
134588-09-000  
DETAIL BB
- 40D REMOTE PANEL -  
INVERTER  
154511-02-000  
CABLE ASM-MODULAR  
148254-03-000  
SCREW  
G11-08-08U (4)  
DETAIL BA



- 8 INSTALL GASKET ON BACK SIDE OF ONE PLACE AFTER INSTALLATION OF THERMOSTAT, MAKING SURE THAT THE GASKET COVERS AND SEALS THE HOLE THAT THE WIRES PASS THROUGH.
  - 7 ADD CONDUIT 41953-07 TO WIRE OUT OF BODY.
  - 6 MOUNT DEVICE AS CLOSE TO WIRE DROP FROM ROOF AS POSSIBLE.
  - 5 WIRE IN ROOF.
  - 4 WIRE IN SIDEWALL.
  - 3 WIRE PASSES THROUGH FLOOR AT THIS POINT.
2. SEE WIRING DIAGRAM-BODY, 12V FOR ADDITIONAL INFORMATION.
1. ALL WIRES TO BE CLAMPED WITH CLAMP 10495-01-000 OR WIRE TIE 8343-02-000 EVERY 600MM, UNLESS OTHERWISE SPECIFIED.

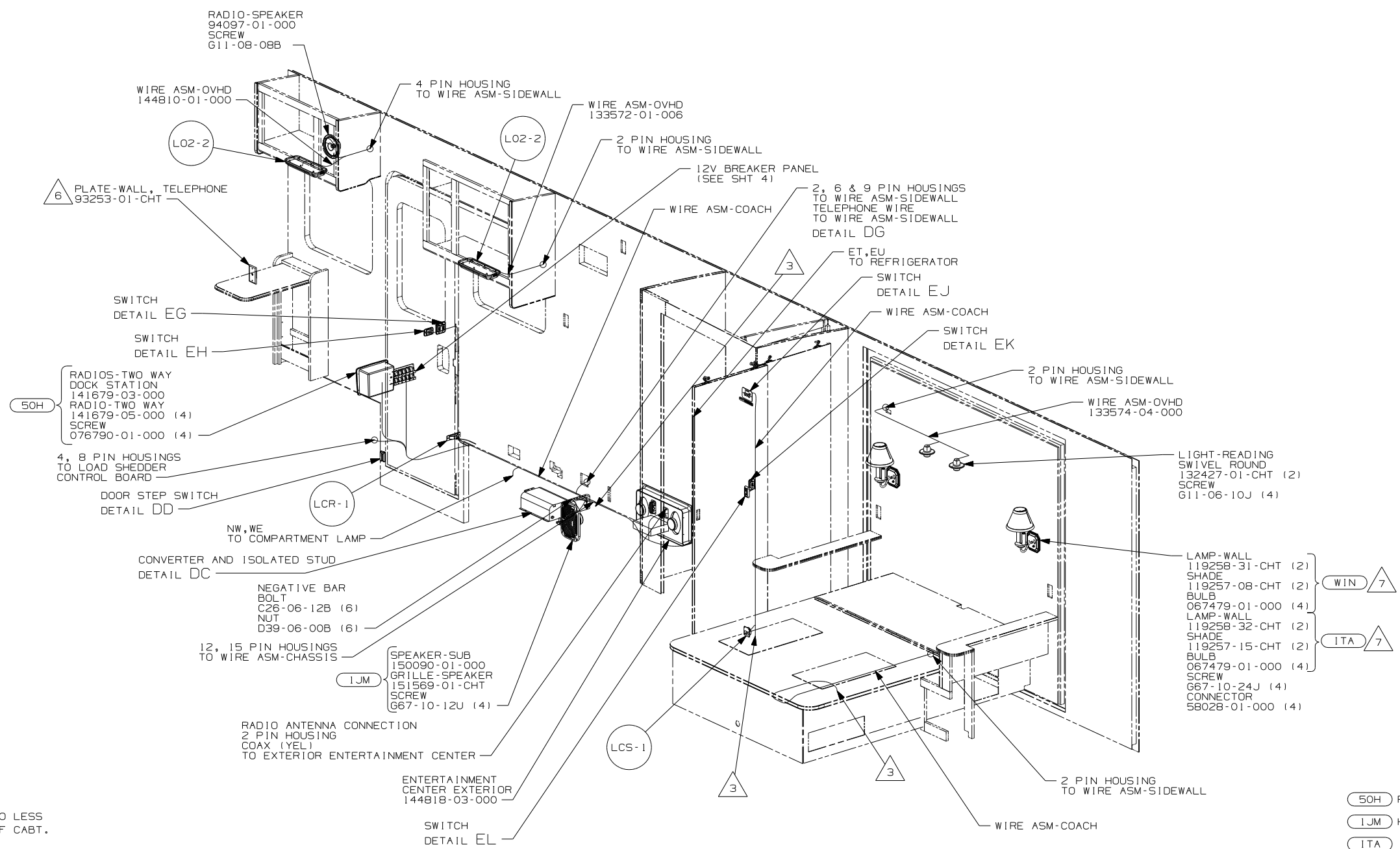
- 571 RADIO SPEAKERS
- 42B TV, REAR-WITHOUT
- 10A TV (REAR)-20"COLOR, STEREO
- 1JM HOME THEATER SOUND SYSTEM
- ITA ITASCA ONLY
- WIN WINNEBAGO ONLY
- 265 CODES/STANDARDS-CSA/CMVSS
- 1B1 CODES/STANDARDS USA

NOTES:

FOR ELECTRICAL  
TORQUE  
SPECIFICATIONS  
SEE DWG NO.  
128783-01-000

(X-X)  
FOR  
ELECTRICAL  
CALLOUTS  
SEE DWG NO.  
121339-01-000

FIRST USED	06 F35D
TITLE	DO NOT SCALE DRAWING
	WIRING INSTL-BODY, 12V
SHEET 2	PART NO 155785 REV



- 7 TOP OF LAMP SHADE TO BE NO LESS THAN 150MM BELOW BOTTOM OF CABT.
- 6 CONNECT TELEPHONE WIRE TO MATCHING COLORS ON PLATE-WALL, TELEPHONE.
- 5 WIRE IN ROOF.
- 4 WIRE IN SIDEWALL.
- 3 WIRE PASSES THROUGH FLOOR AT THIS POINT.

2. SEE WIRING DIAGRAM-BODY, 12V FOR ADDITIONAL INFORMATION.
1. ALL WIRES TO BE CLAMPED WITH CLAMP 10495-01-000 OR WIRE TIE 8343-02-000 EVERY 600MM, UNLESS OTHERWISE SPECIFIED.

NOTES:

- 50H RADIOS TWO-WAY (4)
- 1JM HOME THEATER SOUND SYSTEM
- ITA ITASCA ONLY
- WIN WINNEBAGO ONLY
- 265 CODES/STANDARDS-CSA/CMVSS
- 1B1 CODES/STANDARDS USA

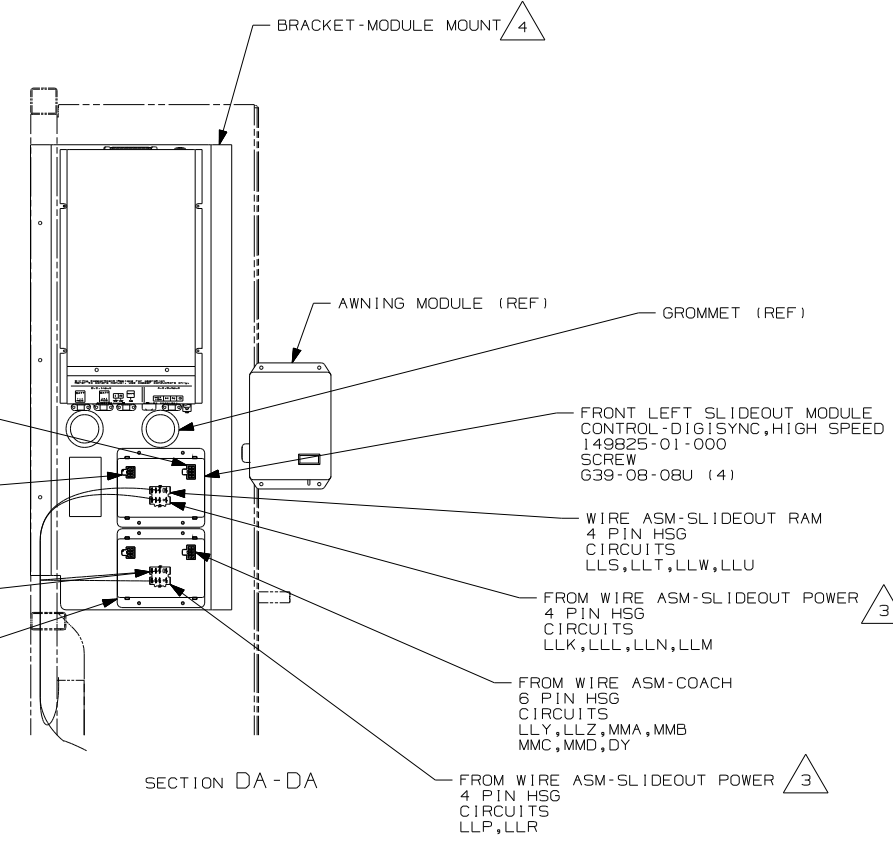
FOR ELECTRICAL TORQUE SPECIFICATIONS SEE DWG NO. 128783-01-000

FOR ELECTRICAL CALLOUTS SEE DWG NO. 121339-01-000

FIRST USED		06 F35D	
DO NOT SCALE DRAWING			
TITLE: WIRING INSTL-BODY, 12V			
SHEET 3	PART NO	155785	REV

8 7 6 5 4 3 2 1

D  
C  
B  
A



FROM WIRE ASM-COACH  
8 PIN HSG  
CIRCUITS  
DS,DU,GGD,GGE,  
DR,GGF,DY

FROM WIRE ASM-COACH  
6 PIN HSG  
CIRCUITS  
GGH,GGG,GGJ  
GGL,GGK,GGM

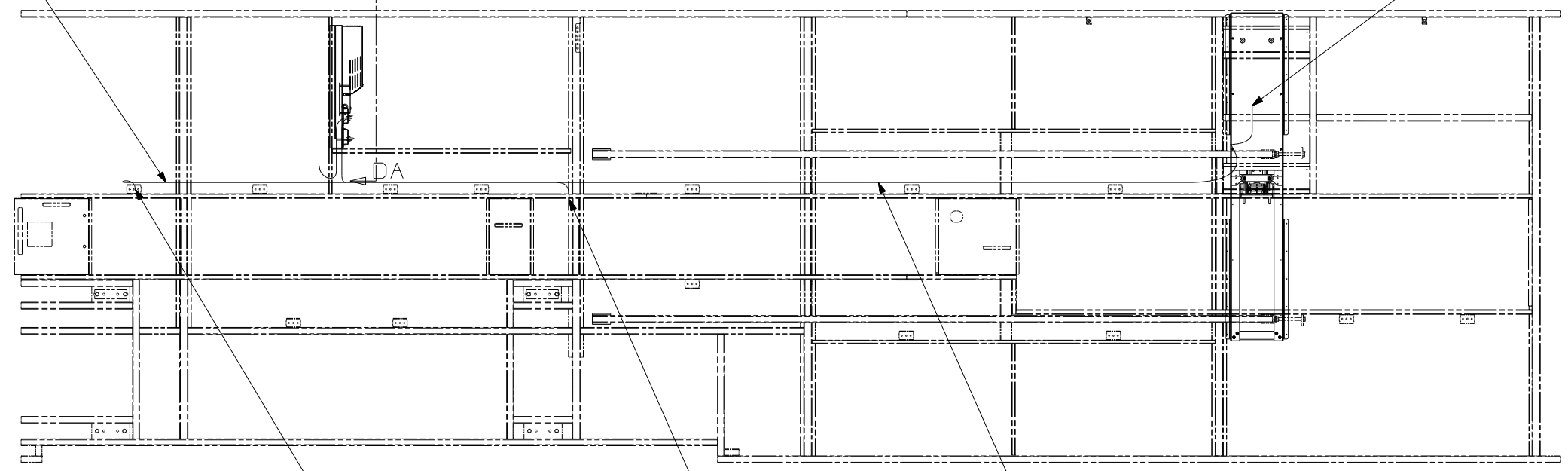
FROM WIRE ASM-SLIDEOUT RAM  
4 PIN HSG  
CIRCUITS  
LLV,LLX

RIGHT REAR SLIDEOUT MODULE  
CONTROL SINGLE HIGH SPEED  
149828-01-000  
SCREW  
G39-08-08U (4)

SECTION DA-DA

(3) WIRE ASM-SLIDEOUT POWER  
FROM STEP BOX

REAR BDRM RAM  
2 PIN HSG  
TO SLIDEOUT RAM MOTOR  
FROM WIRE ASM-SLIDEOUT RAM  
CIRCUITS LLV,LLX



(4) SEE WIRING INSTL-BODY,110V FOR ADDITIONAL INFORMATION.

(3) SEE WIRE ASM-CHASSIS ELECTRICAL BOX FOR ADDITIONAL INFORMATION.

2. SEE WIRING DIAGRAM-BODY,12V FOR ADDITIONAL INFORMATION.

1. ALL WIRES TO BE CLAMPED WITH CLAMP 10495-01-000 OR WIRE TIE 8343-02-000 EVERY 600MM, UNLESS OTHERWISE SPECIFIED.

NOTES:

FRONT LEFT FRONT RAM  
2 PIN HSG  
TO SLIDEOUT RAM MOTOR  
FROM WIRE ASM-SLIDEOUT RAM  
CIRCUITS LLS,LLT  
3 PIN HSG  
TO SLIDEOUT RAM ENCODER  
FROM WIRE ASM-COACH  
CIRCUITS GGG,GGJ,GGH

FRONT LEFT REAR RAM  
2 PIN HSG  
TO SLIDEOUT RAM MOTOR  
FROM WIRE ASM-SLIDEOUT RAM  
CIRCUITS LLU,LLW  
3 PIN HSG  
TO SLIDEOUT RAM ENCODER  
FROM WIRE ASM-COACH  
CIRCUITS GGG,GGJ,GGH

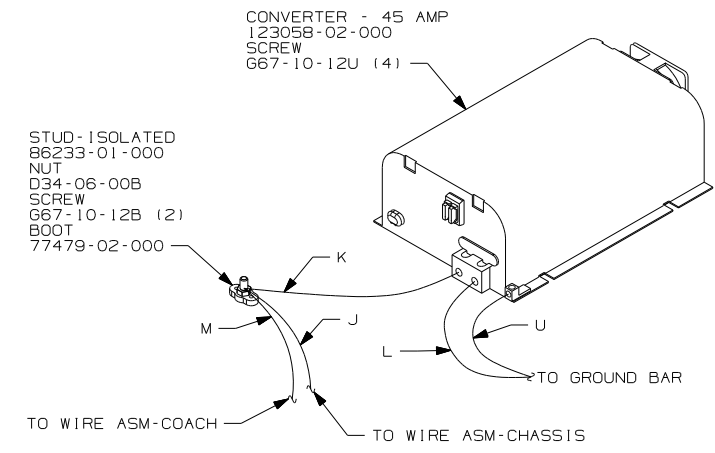
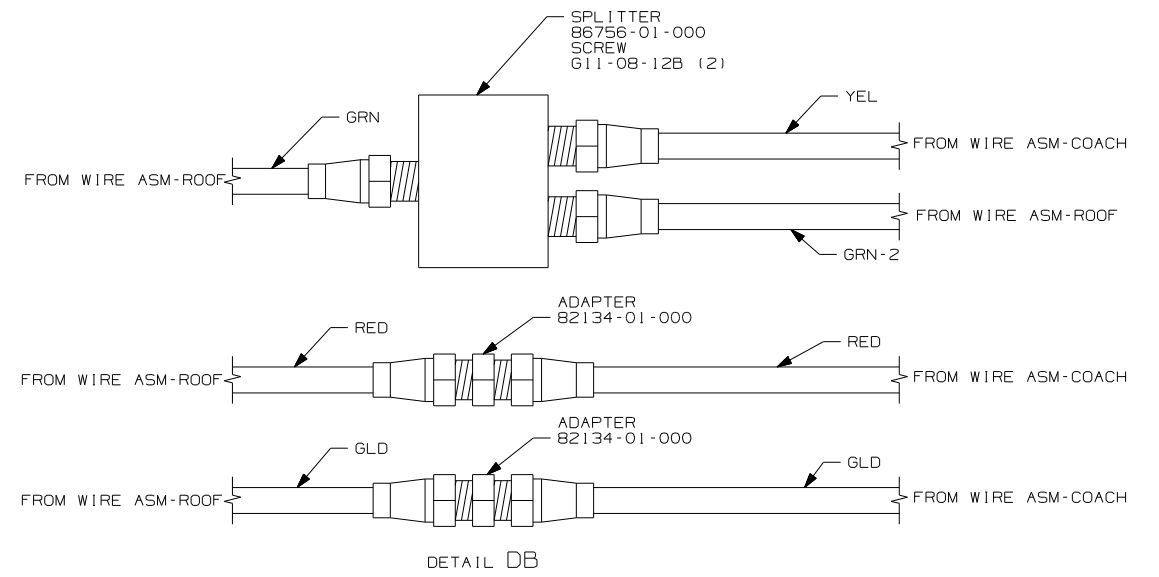
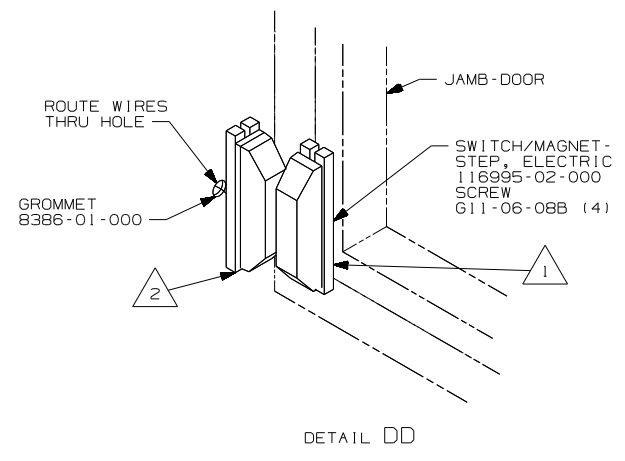
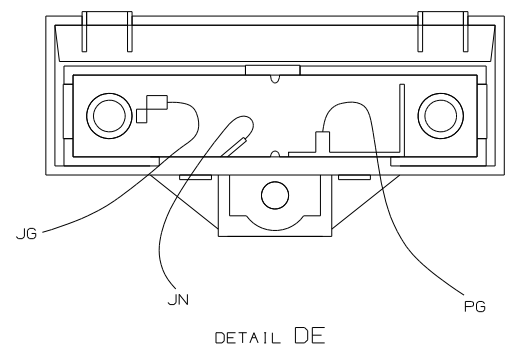
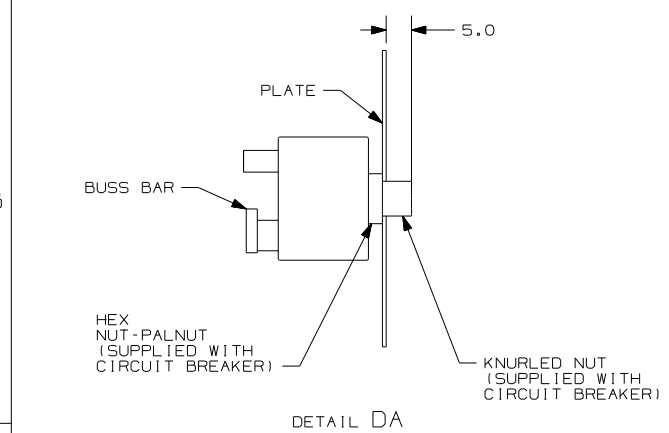
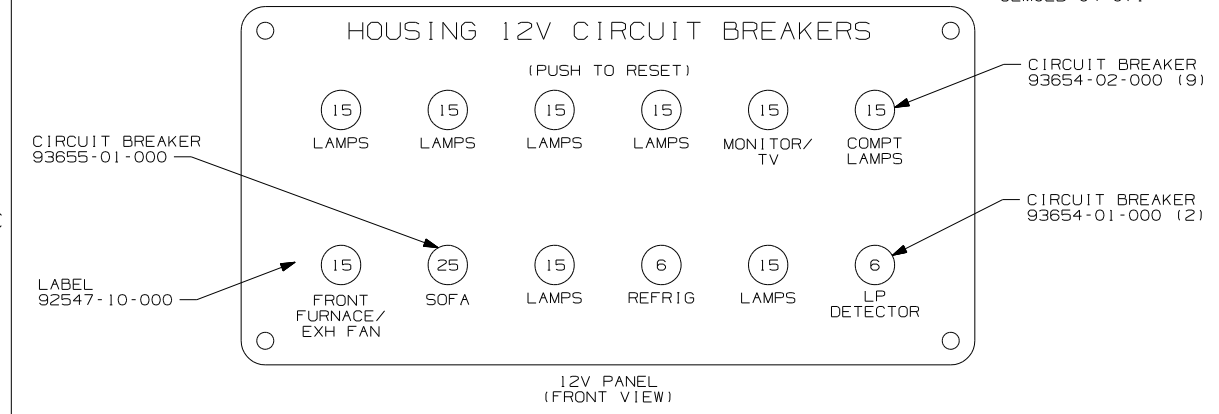
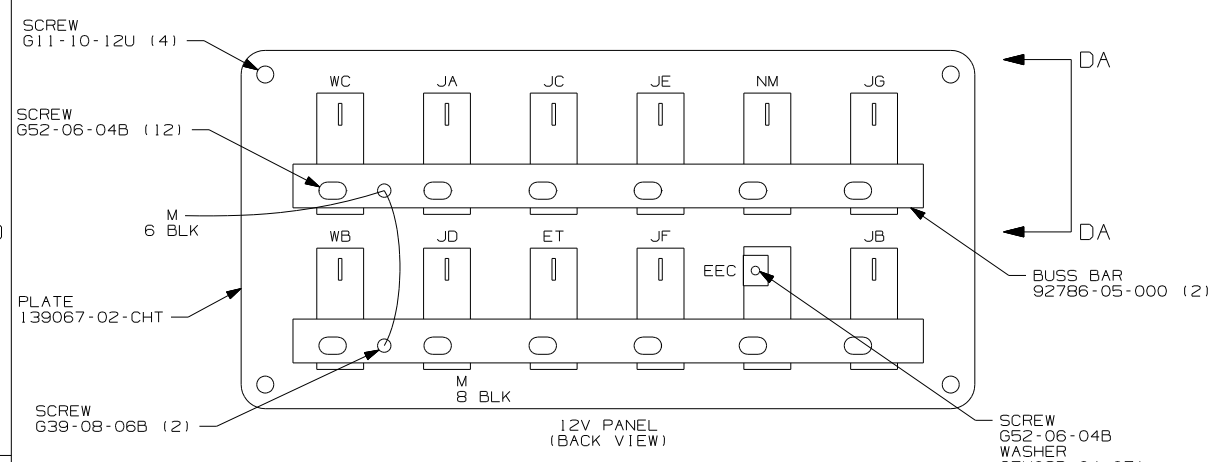
FOR ELECTRICAL  
TORQUE  
SPECIFICATIONS  
SEE DWG NO.  
128783-01-000



FOR ELECTRICAL  
CALLOUTS  
SEE DWG NO.  
121339-01-000

FIRST USED	
06 F35D	
DO NOT SCALE DRAWING	
TITLE: WIRING INSTL-BODY,12V	
SHEET 4	PART NO 155785
REV	

8 7 6 5 4 3 2 1



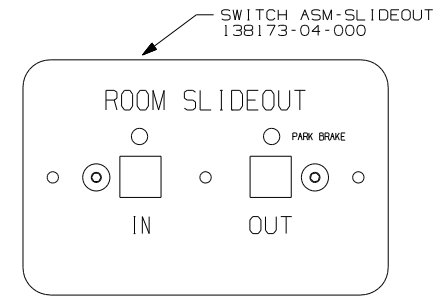
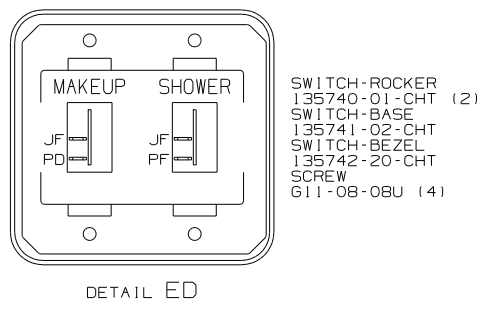
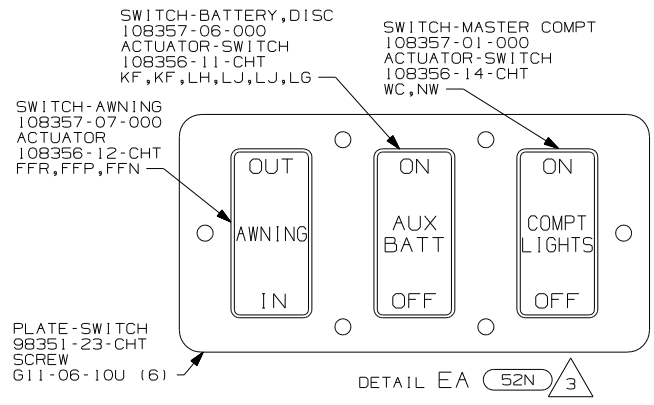
- NOTES:
- 3 FOR POSITIONING DIMENSIONS SEE WIRING INSTL-BODY, 110V SHT 4.
  - 2 MOUNT SWITCH AND SPACER TO BLOCK ON JAMB ADJUST HEIGHT TO MATCH MAGNET.
  - 1 MOUNT MAGNET USING PILOT HOLES IN SCREEN DOOR FRAME. MOUNT WITH MAGNET TOWARD SWITCH.

FOR ELECTRICAL TORQUE SPECIFICATIONS SEE DWG NO. 128783-01-000

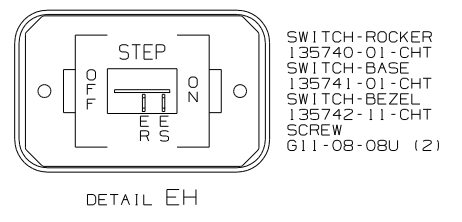
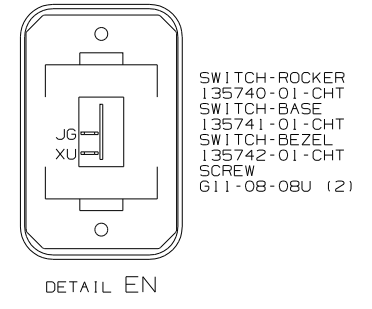
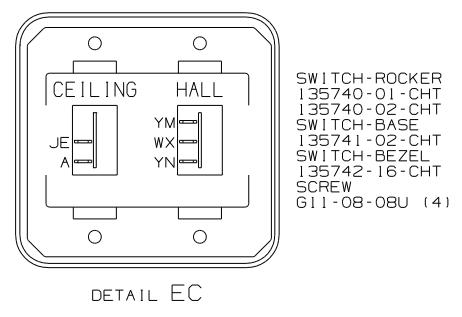
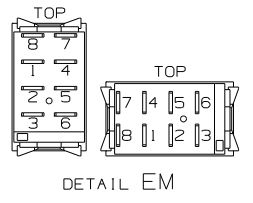
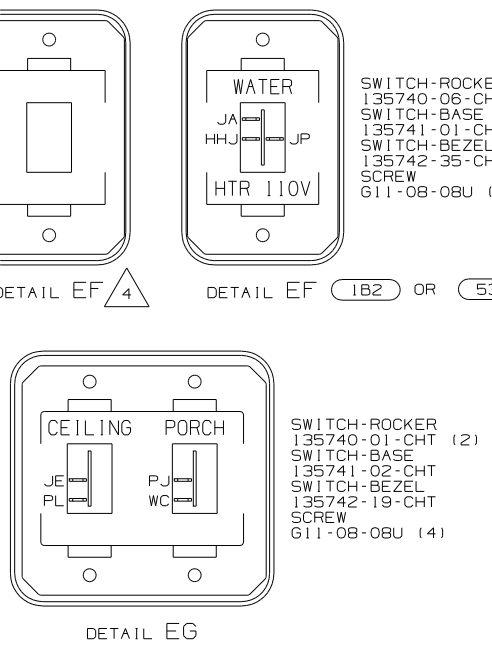
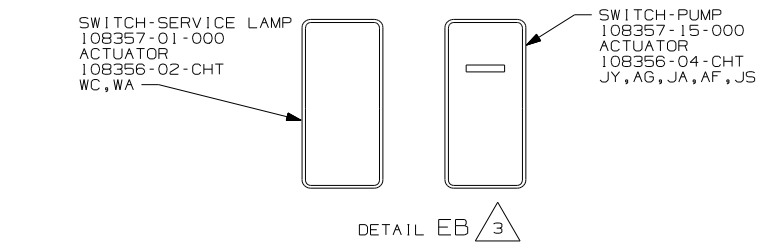
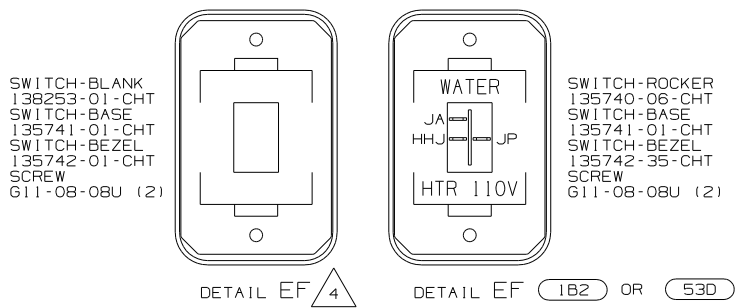
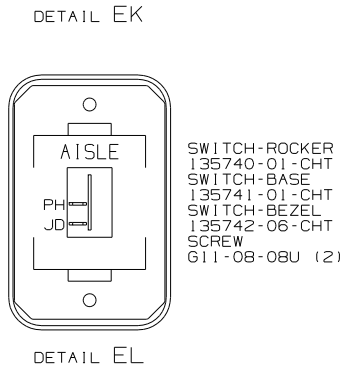
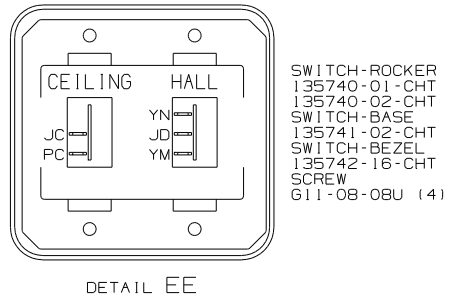
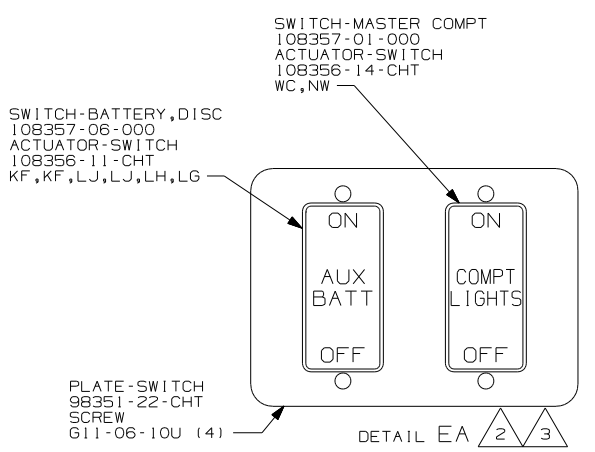
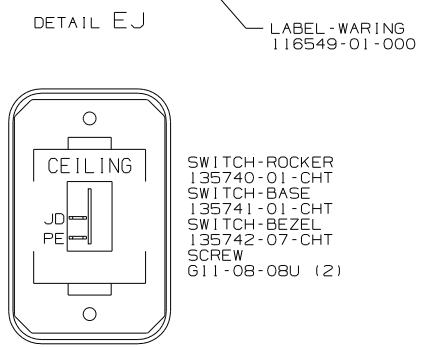
FOR ELECTRICAL CALLOUTS SEE DWG NO. 121339-01-000

265 CODES/STANDARDS - CSA/CMVSS  
 1B1 CODES/STANDARDS - USA

FIRST USED	06 F35D	
TITLE	DO NOT SCALE DRAWING	
	WIRING INSTL-BODY, 12V	
SHEET 5	PART NO 155785	REV



**WARNING** UNDERSTAND OPERATOR'S MANUAL BEFORE USING  
KEEP PEOPLE AND OBSTRUCTIONS CLEAR OF  
SLIDEOUT ROOM WHEN OPERATING TO AVOID  
INJURY AND/OR PROPERTY DAMAGE



- 53D WTR HTR-6GAL/ELE/LP/MOTORAID
- 52N AWNING - PATIO, ELECTRIC
- 265 CODES/STANDARDS - CSA/CMVSS
- 1B2 WTR HTR-10GAL/ELEC/LP/MTRAI D
- 1B1 CODES/STANDARDS - USA

- 4 WITHOUT 1B2 OR 53D
- 3 FOR SWITCH ORIENTATION SEE DETAIL EM.
- 2 WITHOUT 52N

1. SWITCHES ARE TO BE INSTALLED AS SHOWN ON THIS DRAWING.

NOTES:

FOR ELECTRICAL  
TORQUE  
SPECIFICATIONS  
SEE DWG NO.  
128783-01-000

X-X FOR  
ELECTRICAL  
CALLOUTS  
SEE DWG NO.  
121339-01-000

FIRST USED		06 F35D	
DO NOT SCALE DRAWING			
TITLE: WIRING INSTL-BODY, 12V			
SHEET 6	PART NO	155785	REV

1JM SPEAKER-CUBE, CEILING WHITE  
151314-01-CHT (5)  
SCREW  
668-06-12U (20)

FLUNS 3 48V

LFSN2 3 48M

SATELLITE ELEVATION SENSOR  
DETAIL HD

LSH-1

LF1N2

3

LF1-2 7  
WASHER-PLASTIC  
87080-02-CHT (8)  
SCREW  
611-08-08B (16)

1 LAMP  
86280-01-000  
SCREW  
667-10-12U (4)  
CONNECTOR  
58028-01-000 (2)

- 48V LIGHTS-FLUORESCENT
- 48M LIGHTS-INCANDESCENT
- 265 CODES/STANDARDS-CSA/CMVSS
- 1JM HOME THEATER SOUND SYSTEM
- 1B1 CODES/STANDARDS USA

1B1 265

- 4 LAMP LOCATED IN POWER CORD COMPARTMENT.
- 3 LAMP LOCATED IN WATER HEATER COMPARTMENT.
- 2 LAMP LOCATED IN SERVICE COMPARTMENT.
- 1 LAMP LOCATED IN SLIDEOUT.

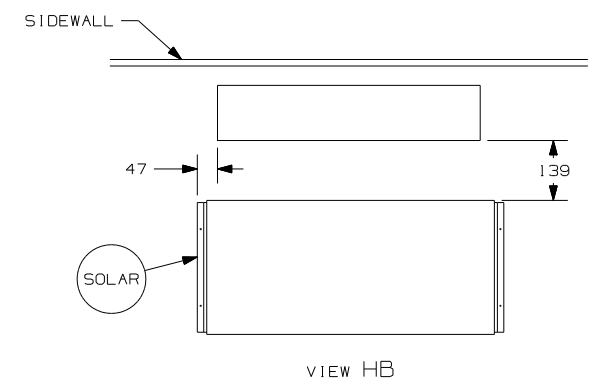
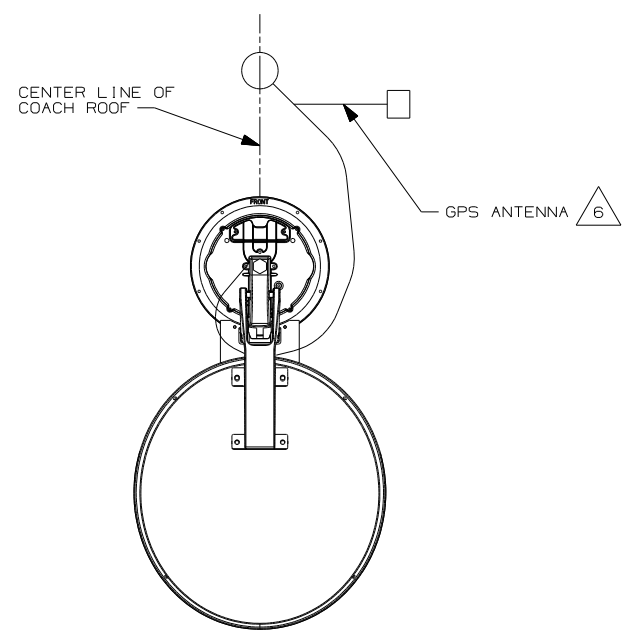
NOTES:

FOR ELECTRICAL TORQUE SPECIFICATIONS SEE DWG NO. 128783-01-000

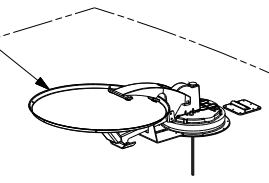
X-X FOR ELECTRICAL CALLOUTS SEE DWG NO. 121339-01-000

FIRST USED	06 F35D
TITLE	DO NOT SCALE DRAWING
SHEET 7	WIRING INSTL-BODY, 12V
PART NO	155785
REV	



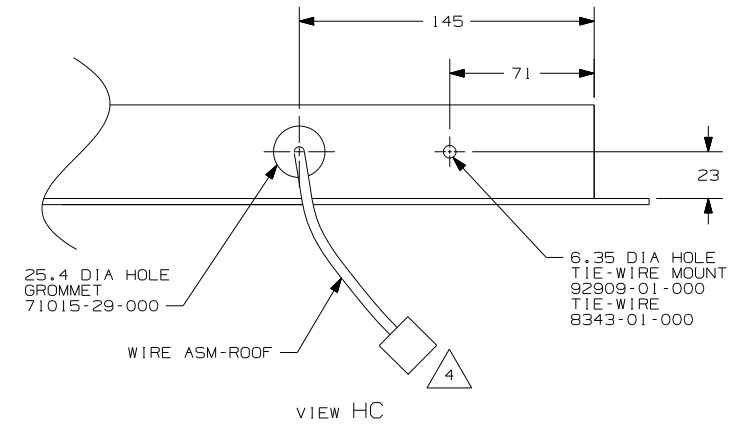
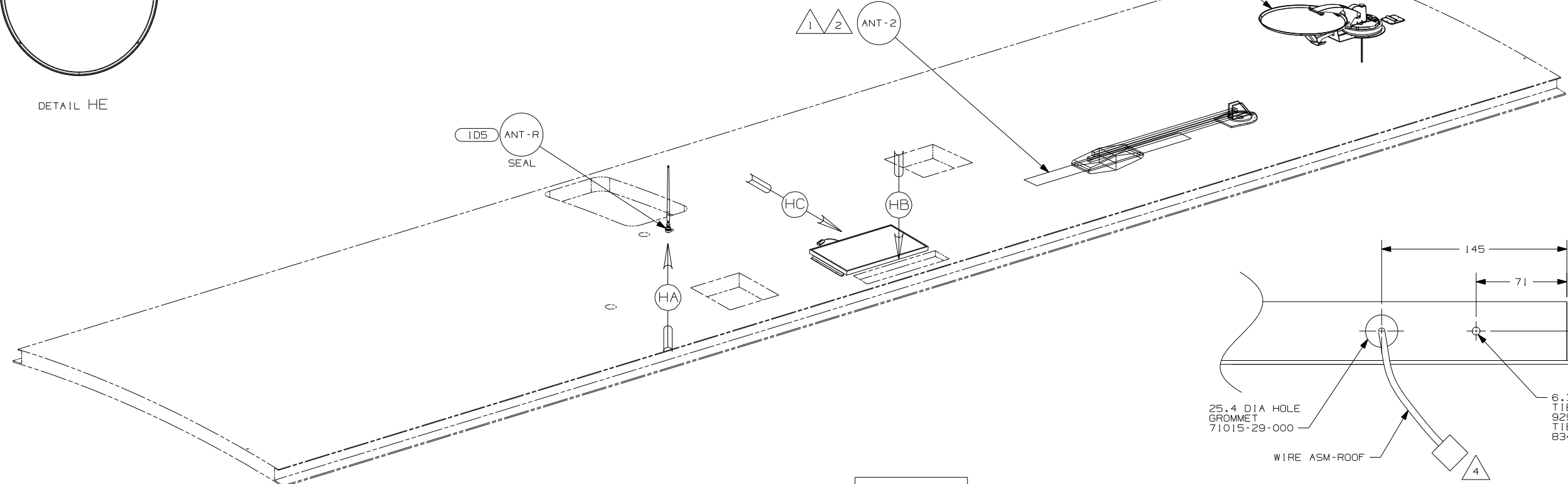


- 78K DA-1
- 480 DM-1



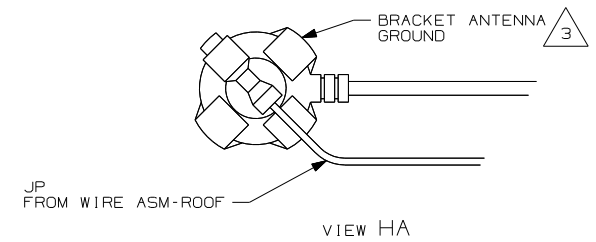
DETAIL HE

VIEW HB

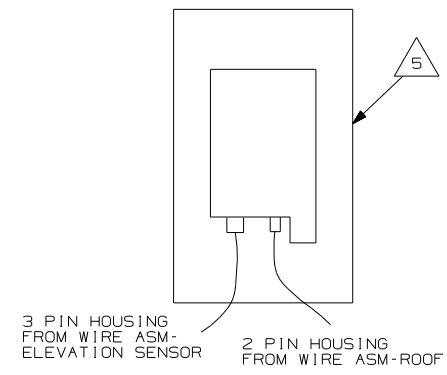


VIEW HC

- NOTES:
- 6 MOUNT GPS ANTENNA TO THE RIGHT OF THE SATELLITE AS SHOWN. SECURE CABLE WITH ROOF SEALANT.
  - 5 SENSOR SUPPLIED WITH SATELLITE ASSEMBLY.
  - 4 FASTEN TO VENT.
  - 3 WRAP BRACKET LEGS AROUND ANTENNA BASE.
  - 2 ADD RUBBER BUMPERS TO ROOF UNDER EACH END OF ANTENNA TO PREVENT CONTACT WITH ROOF.
  - 1 SEE DWG 76319-01-000 FOR INSTALLATION OF TV ANTENNA.



VIEW HA



VIEW HD

- 480 SATELLITE DISH & ELEV.SENSOR
- 290 SOLAR PANEL-10 WATT
- 265 CODES/STANDARDS-CSA/CMVSS
- 1D5 ENTERTAINMENT CENTR/EXT W/CD
- 1B1 CODES/STANDARDS USA

FIRST USED		06 F35D	
DO NOT SCALE DRAWING			
TITLE: WIRING INSTL-BODY, 12V			
SHEET 8	PART NO	155785	REV

FOR ELECTRICAL TORQUE SPECIFICATIONS SEE DWG NO. 128783-01-000

FOR ELECTRICAL CALLOUTS SEE DWG NO. 121339-01-000