



**DANGER**

**Danger of electrical shock, burns or death.** Always remove all power sources before attempting any repair, service or diagnostic work. Power can be present from shore power, generator, inverter or battery. All power sources must be disabled and secured before performing any service.

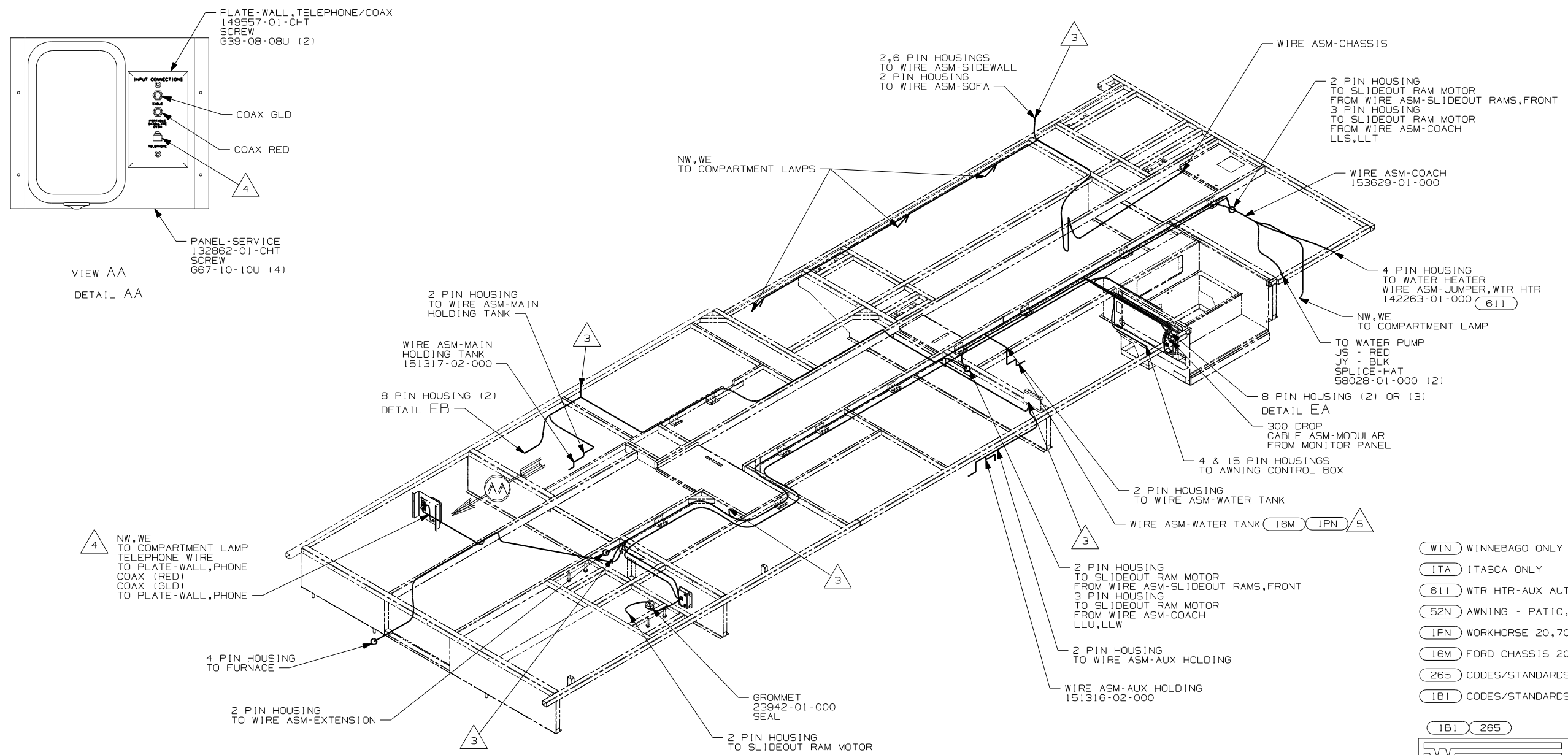


**CAUTION**

If you lack the skills, tools or equipment to perform diagnostic or repair work leave such work to an authorized Winnebago Industries dealer or other qualified shop.

| DRAWING NO. | FEATURE |
|-------------|---------|
| 153310-01   | (WIN)   |
| 153310-02   | (ITA)   |

|          |                 |          |
|----------|-----------------|----------|
| RELEASE  | REV DATE        | DWG NO   |
|          | A               | 153310   |
| REV ZONE | REVISION RECORD | DATE     |
|          |                 | DFTR-016 |



VIEW AA  
DETAIL AA

4 NW, WE  
TO COMPARTMENT LAMP  
TELEPHONE WIRE  
TO PLATE-WALL, PHONE  
COAX (RED)  
COAX (GLD)  
TO PLATE-WALL, PHONE

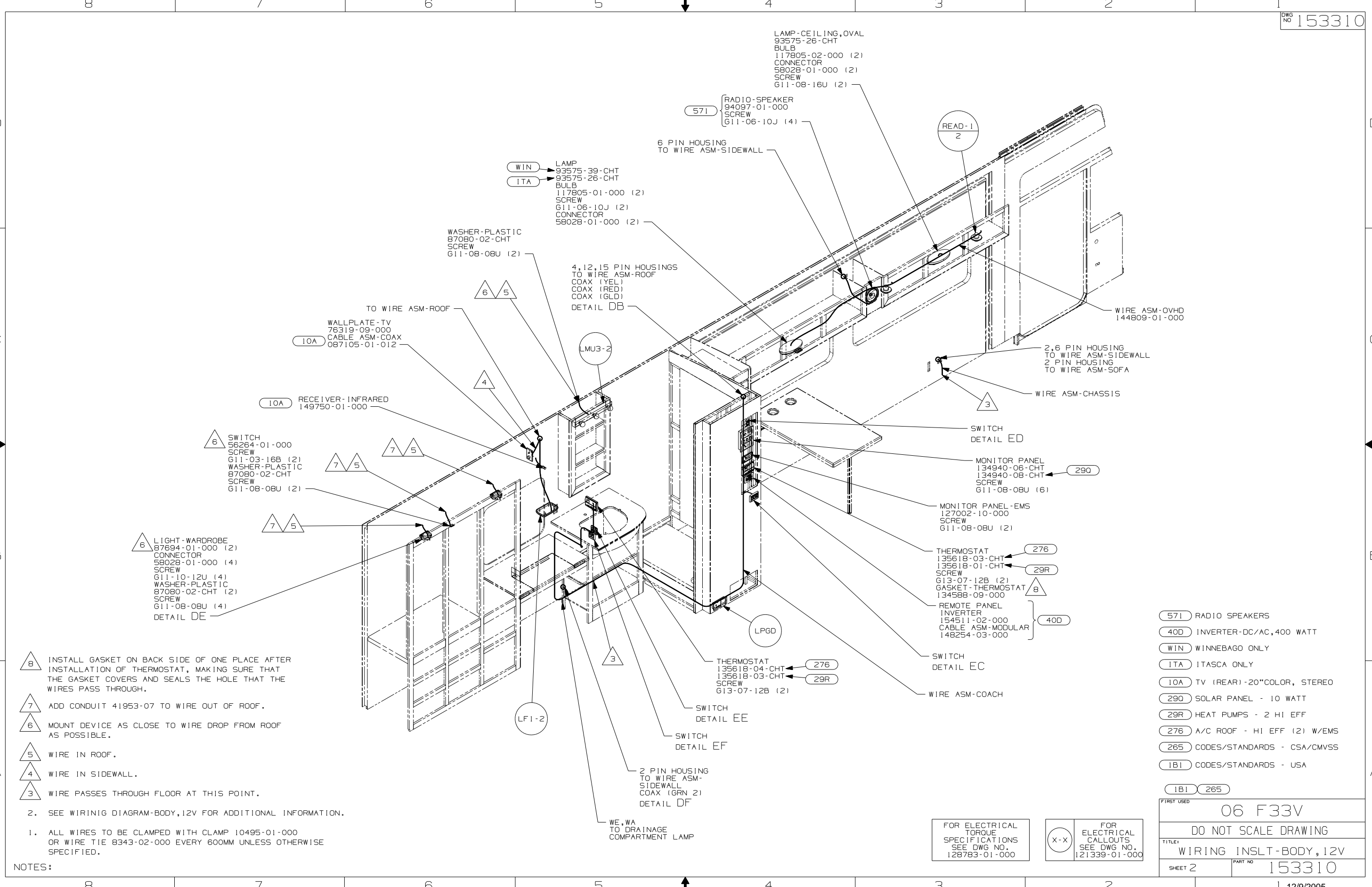
- NOTES:
- ALL WIRES TO BE CLAMPED WITH CLAMP 10495-01-000 OR WIRE TIE 8343-02-000 EVERY 600MM UNLESS OTHERWISE SPECIFIED.
  - SEE WIRING DIAGRAM-BODY, 12V FOR ADDITIONAL INFORMATION.
- 7 ROUTE WIRES AS SHOWN AND CLAMP AS NEEDED.  
 6 SEE CHASSIS ELECTRICAL BOX-ASM FOR ADDITIONAL INFORMATION.  
 5 USE WIRE ASM-WATER TANK 151317-01-000.  
 4 CONNECT TELEPHONE WIRE TO MATCHING COLORS ON PLATE-WALL, TELEPHONE.  
 3 WIRE PASSES THROUGH FLOOR AT THIS POINT.

- (WIN) WINNEBAGO ONLY
- (ITA) ITASCA ONLY
- (611) WTR HTR-AUX AUTO/MOTORAID
- (52N) AWNING - PATIO, ELECTRIC
- (1PN) WORKHORSE 20,700#-19.5 TIRE
- (16M) FORD CHASSIS 20,500#/V10 ENG
- (265) CODES/STANDARDS - CSA/CMVSS
- (1B1) CODES/STANDARDS - USA

FOR ELECTRICAL TORQUE SPECIFICATIONS SEE DWG NO. 128783-01-000

(X-X) FOR ELECTRICAL CALLOUTS SEE DWG NO. 121339-01-000

|                                  |            |   |  |
|----------------------------------|------------|---|--|
| <b>WINNEBAGO</b>                 |            | COPYRIGHT 2004<br>WINNEBAGO<br>INDUSTRIES, INC. |  |
| DFTR                             | ORIG. DATE |   |  |
| CHKR                             | P.E.       | ALL DIMENSIONS ARE<br>IN MILLIMETERS            |  |
| M.E.                             | DSNR       | FIRST USED<br><b>06 F33V</b>                    |  |
| UNSPECIFIED TOLERANCES ARE:      |            | MATERIAL:                                       |  |
| WHOLE DIM (X)                    | : 3        |   |  |
| ONE-PLACE (X.X)                  | : 1.5      |   |  |
| TWO-PLACE (X.XX)                 | : 0.50     |   |  |
| ANGLE                            | : 1°       |   |  |
| THIRD ANGLE PROJECTION           |            |   |  |
| <b>DO NOT SCALE DRAWING</b>      |            |   |  |
| TITLE:<br>WIRING INSLT-BODY, 12V |            |   |  |
| SHEET 1 OF 8                     |            | PART NO<br><b>153310</b>                        |  |
| REF:                             |            | 1 12/9/2005                                     |  |



LAMP-CEILING, OVAL  
 93575-26-CHT  
 BULB  
 117805-02-000 (2)  
 CONNECTOR  
 58028-01-000 (2)  
 SCREW  
 G11-08-16U (2)

571 RADIO-SPEAKER  
 94097-01-000  
 SCREW  
 G11-06-10J (4)

WIN LAMP  
 93575-39-CHT  
 ITA LAMP  
 93575-26-CHT  
 BULB  
 117805-01-000 (2)  
 SCREW  
 G11-06-10J (2)  
 CONNECTOR  
 58028-01-000 (2)

WASHER-PLASTIC  
 87080-02-CHT  
 SCREW  
 G11-08-08U (2)

4, 12, 15 PIN HOUSINGS  
 TO WIRE ASM-ROOF  
 COAX (YEL)  
 COAX (RED)  
 COAX (GLD)  
 DETAIL DB

TO WIRE ASM-ROOF  
 WALLPLATE-TV  
 76319-09-000  
 CABLE ASM-COAX  
 087105-01-012  
 10A

10A RECEIVER-INFRARED  
 149750-01-000

6 SWITCH  
 56264-01-000  
 SCREW  
 G11-03-16B (2)  
 WASHER-PLASTIC  
 87080-02-CHT  
 SCREW  
 G11-08-08U (2)

6 LIGHT-WARDROBE  
 87694-01-000 (2)  
 CONNECTOR  
 58028-01-000 (4)  
 SCREW  
 G11-10-12U (4)  
 WASHER-PLASTIC  
 87080-02-CHT (2)  
 SCREW  
 G11-08-08U (4)  
 DETAIL DE

8 INSTALL GASKET ON BACK SIDE OF ONE PLACE AFTER  
 INSTALLATION OF THERMOSTAT, MAKING SURE THAT  
 THE GASKET COVERS AND SEALS THE HOLE THAT THE  
 WIRES PASS THROUGH.

7 ADD CONDUIT 41953-07 TO WIRE OUT OF ROOF.

6 MOUNT DEVICE AS CLOSE TO WIRE DROP FROM ROOF  
 AS POSSIBLE.

5 WIRE IN ROOF.

4 WIRE IN SIDEWALL.

3 WIRE PASSES THROUGH FLOOR AT THIS POINT.

2. SEE WIRING DIAGRAM-BODY, 12V FOR ADDITIONAL INFORMATION.

1. ALL WIRES TO BE CLAMPED WITH CLAMP 10495-01-000  
 OR WIRE TIE 8343-02-000 EVERY 600MM UNLESS OTHERWISE  
 SPECIFIED.

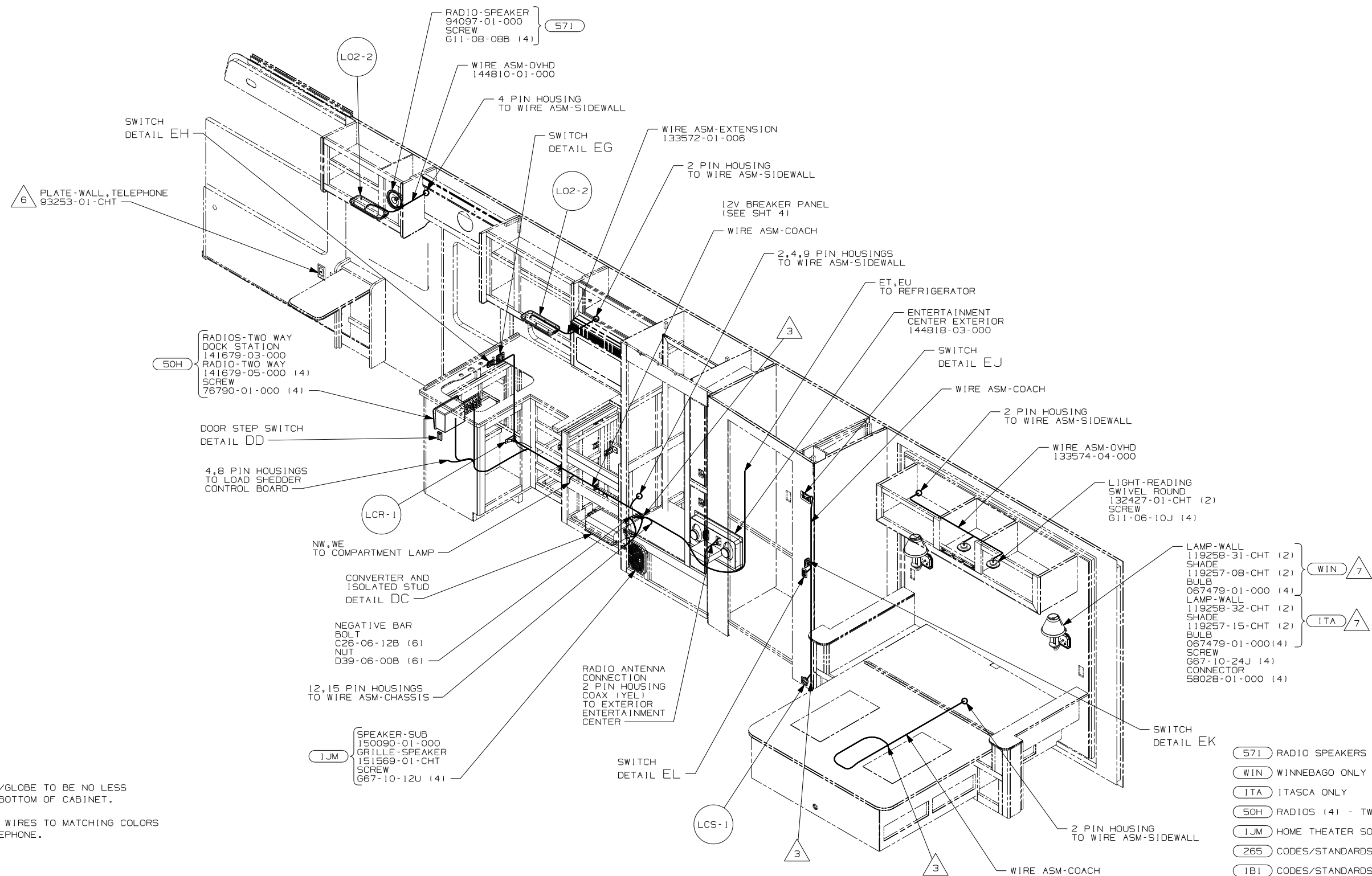
NOTES:

FOR ELECTRICAL  
 TORQUE  
 SPECIFICATIONS  
 SEE DWG NO.  
 128783-01-000

(X-X)  
 FOR  
 ELECTRICAL  
 CALLOUTS  
 SEE DWG NO.  
 121339-01-000

- 571 RADIO SPEAKERS
- 40D INVERTER-DC/AC, 400 WATT
- WIN WINNEBAGO ONLY
- ITA ITASCA ONLY
- 10A TV (REAR)-20"COLOR, STEREO
- 290 SOLAR PANEL - 10 WATT
- 29R HEAT PUMPS - 2 HI EFF
- 276 A/C ROOF - HI EFF (2) W/EMS
- 265 CODES/STANDARDS - CSA/CMVSS
- 1B1 CODES/STANDARDS - USA

|                                  |                   |
|----------------------------------|-------------------|
| FIRST USED                       |                   |
| 06 F33V                          |                   |
| DO NOT SCALE DRAWING             |                   |
| TITLE:<br>WIRING INSLT-BODY, 12V |                   |
| SHEET 2                          | PART NO<br>153310 |



- 7 TOP OF LAMP SHADE/GLOBE TO BE NO LESS THAN 150MM BELOW BOTTOM OF CABINET.
- 6 CONNECT TELEPHONE WIRES TO MATCHING COLORS ON PLATE-WALL, TELEPHONE.
- 5 WIRE IN ROOF.
- 4 WIRE IN SIDEWALL.
- 3 WIRE PASSES THROUGH FLOOR AT THIS POINT.

2. SEE WIRING DIAGRAM-BODY, 12V FOR ADDITIONAL INFORMATION.
1. ALL WIRES TO BE CLAMPED WITH CLAMP 10495-01-000 OR WIRE TIE 8343-02-000 EVERY 600MM UNLESS OTHERWISE SPECIFIED.

NOTES:

- LAMP-WALL 119258-31-CHT (2)
- SHADE 119257-08-CHT (2)
- BULB 067479-01-000 (4)
- LAMP-WALL 119258-32-CHT (2)
- SHADE 119257-15-CHT (2)
- BULB 067479-01-000 (4)
- SCREW 667-10-24J (4)
- CONNECTOR 58028-01-000 (4)

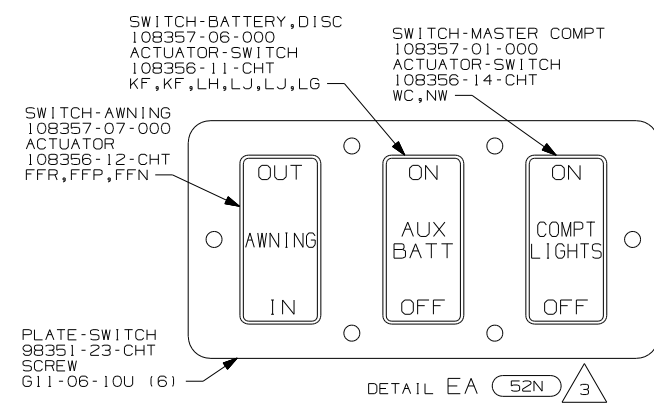
- 571 RADIO SPEAKERS
- WIN WINNEBAGO ONLY
- ITA ITASCA ONLY
- 50H RADIOS (4) - TWO-WAY
- 1JM HOME THEATER SOUND SYSTEM
- 265 CODES/STANDARDS - CSA/CMVSS
- 1B1 CODES/STANDARDS - USA

FOR ELECTRICAL TORQUE SPECIFICATIONS SEE DWG NO. 128783-01-000

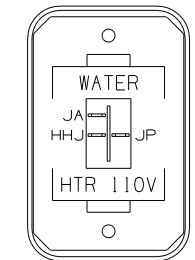
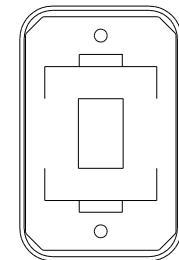
FOR ELECTRICAL CALLOUTS SEE DWG NO. 121339-01-000

|                               |                |
|-------------------------------|----------------|
| FIRST USED                    |                |
| 06 F33V                       |                |
| DO NOT SCALE DRAWING          |                |
| TITLE: WIRING INSLT-BODY, 12V |                |
| SHEET 3                       | PART NO 153310 |

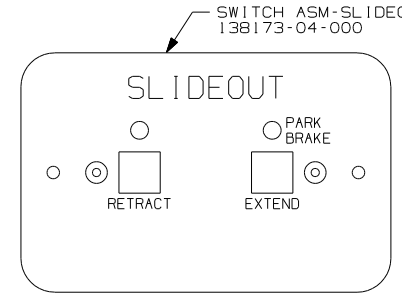




SWITCH-BLANK  
138253-01-CHT  
SWITCH-BASE  
135741-01-CHT  
SWITCH-BEZEL  
135742-01-CHT  
SCREW  
G11-08-08U (2)

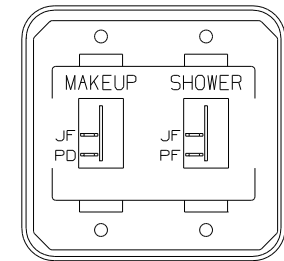
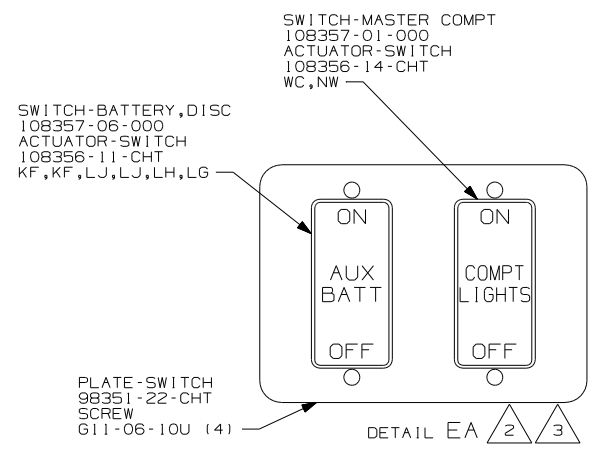


SWITCH-ROCKER  
135740-06-CHT  
SWITCH-BASE  
135741-01-CHT  
SWITCH-BEZEL  
135742-35-CHT  
SCREW  
G11-08-08U (2)

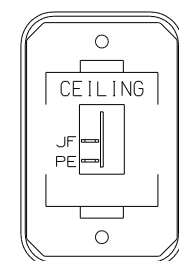


**WARNING** UNDERSTAND OPERATOR'S MANUAL BEFORE USING  
KEEP PEOPLE AND OBSTRUCTIONS CLEAR OF  
SLIDEOUT ROOM WHEN OPERATING TO AVOID  
INJURY AND/OR PROPERTY DAMAGE

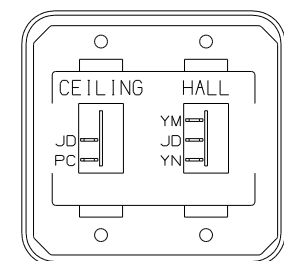
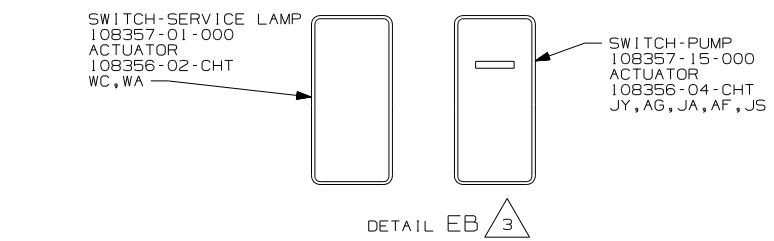
LABEL-WARNING  
116549-01-000



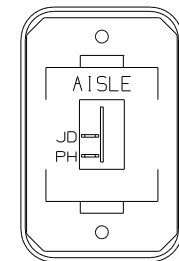
SWITCH-ROCKER  
135740-01-CHT (2)  
SWITCH-BASE  
135741-02-CHT  
SWITCH-BEZEL  
135742-20-CHT  
SCREW  
G11-08-08U (4)



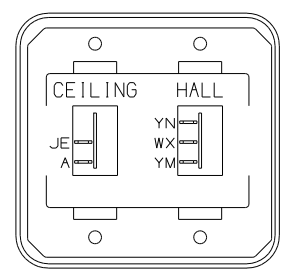
SWITCH-ROCKER  
135740-01-CHT  
SWITCH-BASE  
135741-01-CHT  
SWITCH-BEZEL  
135742-07-CHT  
SCREW  
G11-08-08U (2)



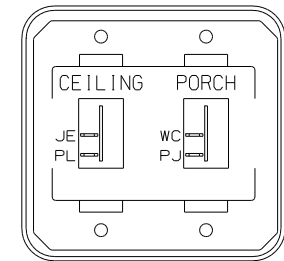
SWITCH-ROCKER  
135740-01-CHT  
135740-02-CHT  
SWITCH-BASE  
135741-02-CHT  
SWITCH-BEZEL  
135742-16-CHT  
SCREW  
G11-08-08U (4)



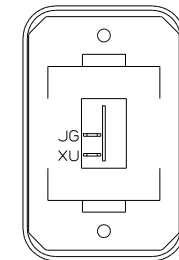
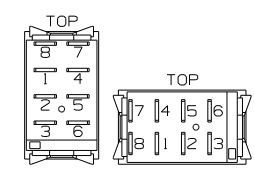
SWITCH-ROCKER  
135740-01-CHT  
SWITCH-BASE  
135741-01-CHT  
SWITCH-BEZEL  
135742-06-CHT  
SCREW  
G11-08-08U (2)



SWITCH-ROCKER  
135740-01-CHT  
135740-02-CHT  
SWITCH-BASE  
135741-02-CHT  
SWITCH-BEZEL  
135742-16-CHT  
SCREW  
G11-08-08U (4)



SWITCH-ROCKER  
135740-01-CHT (2)  
SWITCH-BASE  
135741-02-CHT  
SWITCH-BEZEL  
135742-19-CHT  
SCREW  
G11-08-08U (4)



SWITCH-ROCKER  
135740-01-CHT  
SWITCH-BASE  
135741-01-CHT  
SWITCH-BEZEL  
135742-01-CHT  
SCREW  
G11-08-08U (2)

- (53D) WTR HTR-6GAL/ELE/LP/MOTORAID
- (52N) AWNING - PATIO, ELECTRIC
- (265) CODES/STANDARDS - CSA/CMVSS
- (1B1) CODES/STANDARDS - USA

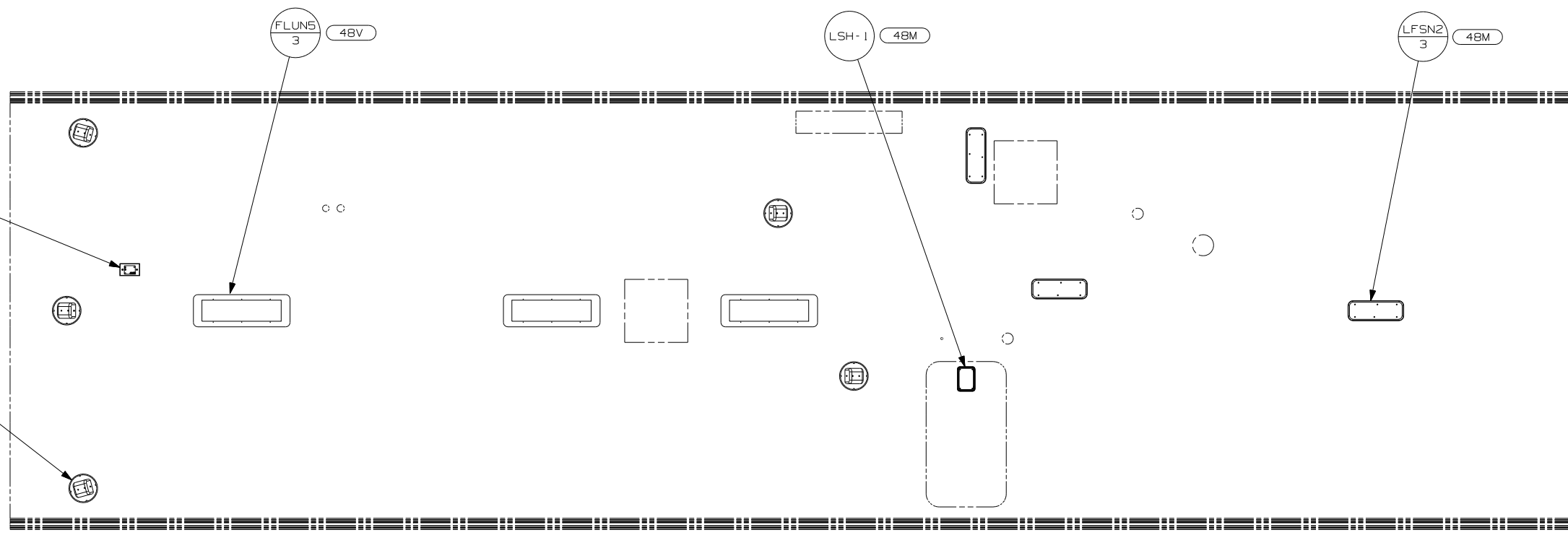
- 4 WITHOUT (1B2) OR (53D)
- 3 FOR SWITCH ORIENTATION SEE DETAIL EM.
- 2 WITHOUT (52N)

NOTES:  
1. SWITCHES ARE TO BE INSTALLED AS SHOWN ON THIS DRAWING.

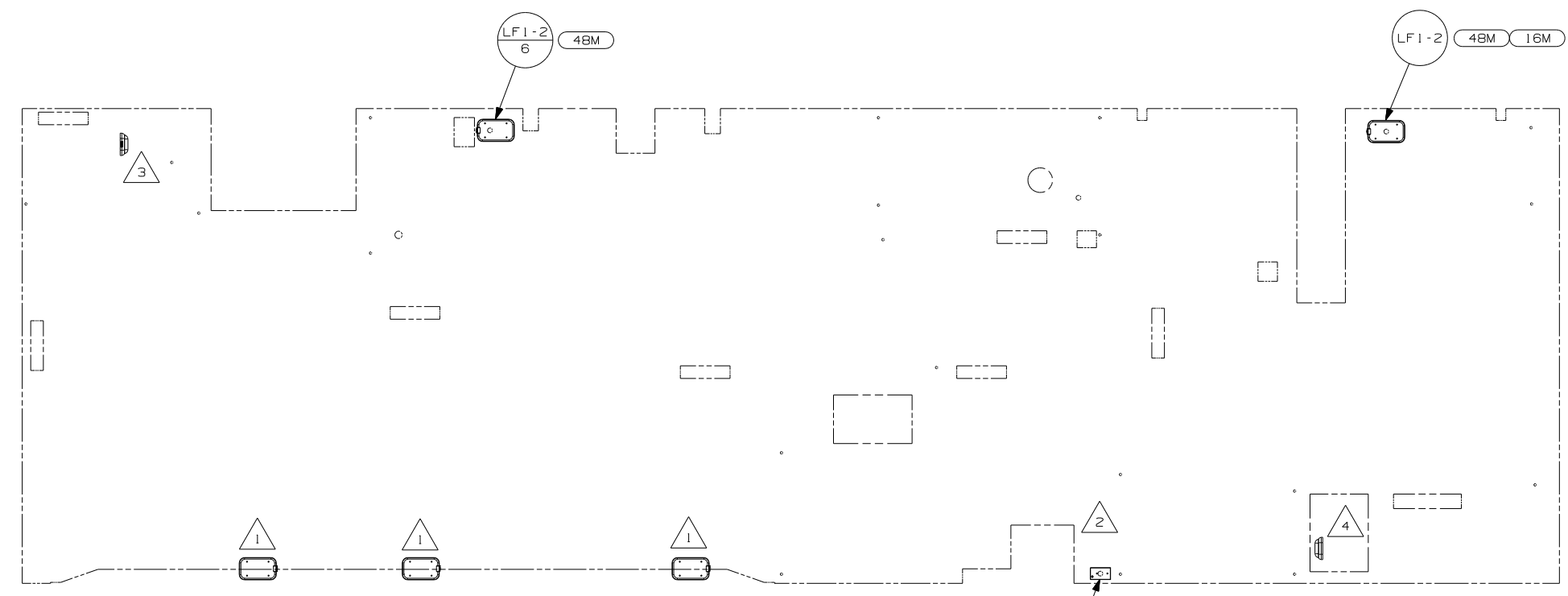
FOR ELECTRICAL  
TORQUE  
SPECIFICATIONS  
SEE DWG NO.  
128783-01-000

(X-X)  
FOR  
ELECTRICAL  
CALLOUTS  
SEE DWG NO.  
121339-01-000

|            |                        |
|------------|------------------------|
| FIRST USED | 06 F33V                |
| TITLE:     | DO NOT SCALE DRAWING   |
|            | WIRING INSLT-BODY, 12V |
| SHEET 5    | PART NO 153310         |



1JM {  
SPEAKER-CUBE  
151314-01-CHT (5)  
SCREW  
668-06-12U (20)



48M LAMP  
86280-01-000  
SCREW  
667-10-12U (4)  
CONNECTOR  
58028-01-000 (2)  
WASHER-PLASTIC  
87080-02-CHT  
SCREW  
611-08-08U (2)

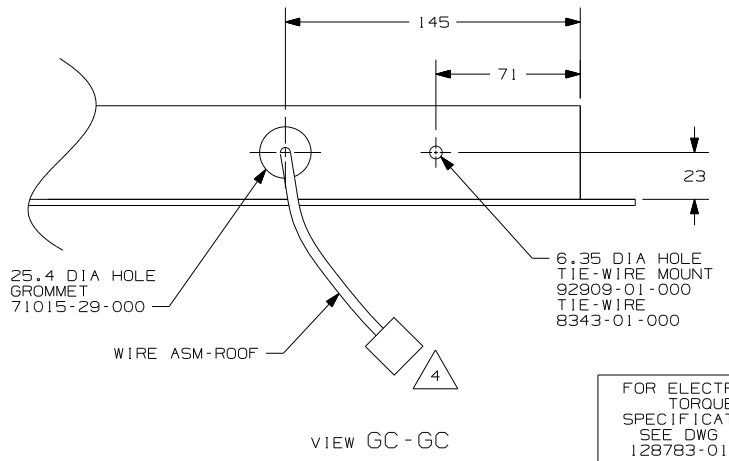
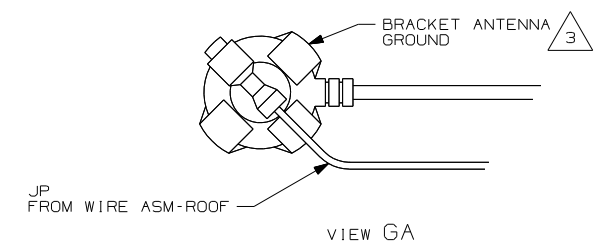
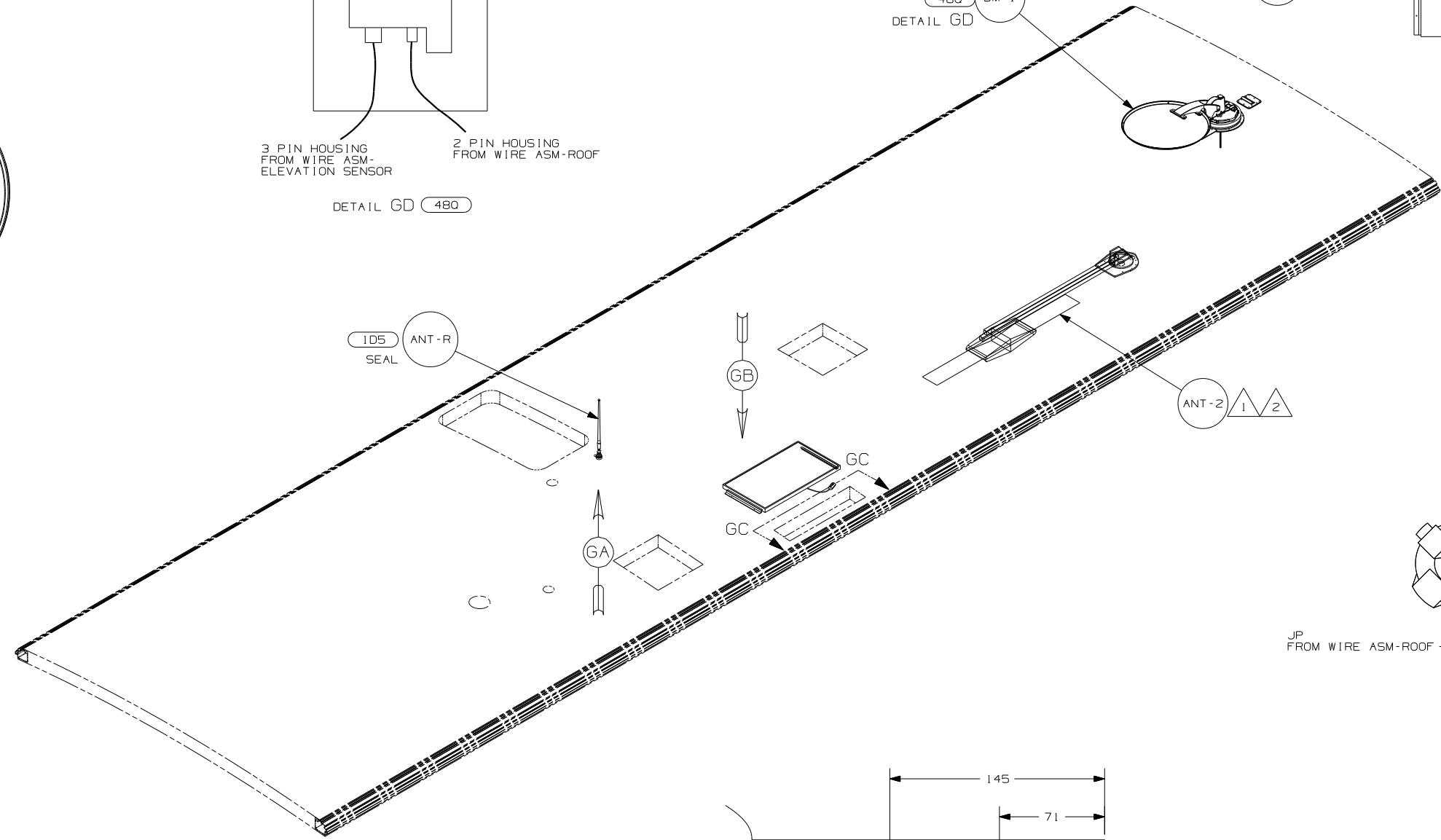
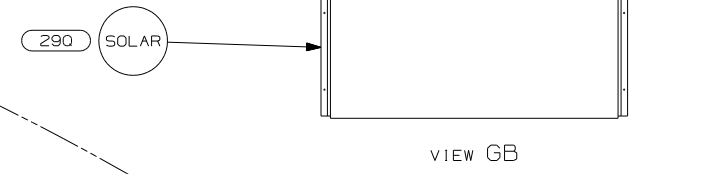
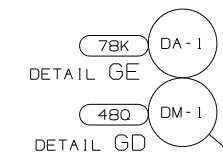
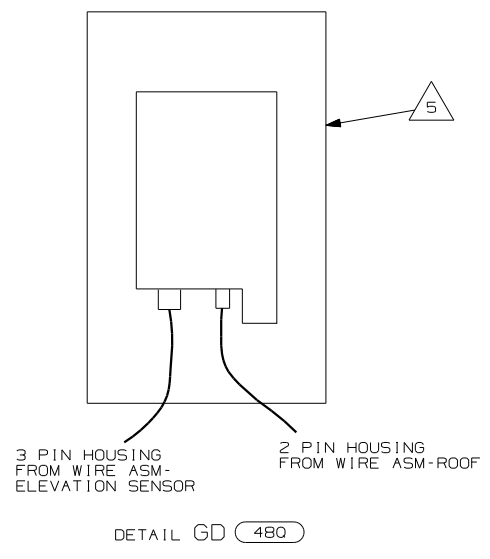
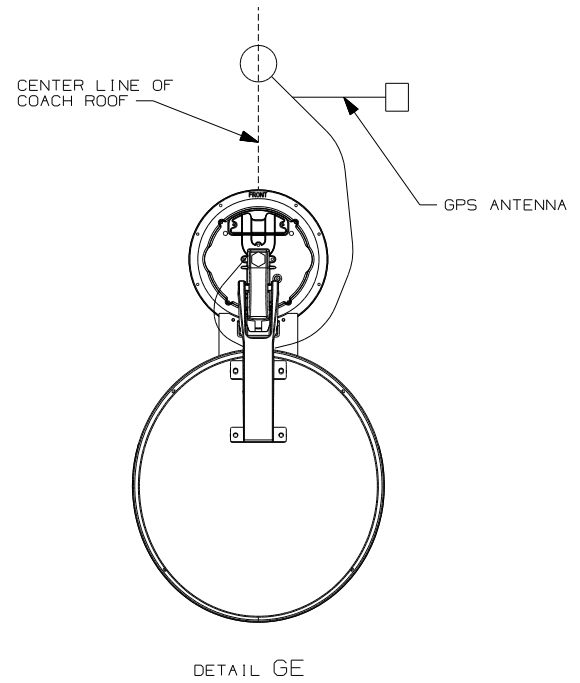
FOR ELECTRICAL  
TORQUE  
SPECIFICATIONS  
SEE DWG NO.  
128783-01-000

FOR  
ELECTRICAL  
CALLOUTS  
SEE DWG NO.  
121339-01-000

- 48V LIGHTS-FLUORESCENT
- 48M LIGHTS-INCANDESCENT
- 1JM HOME THEATER SOUND SYSTEM
- 16M FORD CHASSIS 20,500# GVWR
- 265 CODES/STANDARDS - CSA/CMVSS
- 1B1 CODES/STANDARDS - USA

- NOTES:
- 4 LAMP LOCATED IN POWER CORD COMPARTMENT.
  - 3 LAMP LOCATED IN WATER HEATER COMPARTMENT.
  - 2 LAMP LOCATED IN SERVICE COMPARTMENT.
  - 1 LAMP LOCATED IN SLIDEOUT.

|                      |                        |
|----------------------|------------------------|
| FIRST USED           | 06 F33V                |
| DO NOT SCALE DRAWING |                        |
| TITLE:               | WIRING INSLT-BODY, 12V |
| SHEET 6              | PART NO 153310         |



- NOTES:
- 5 SENSOR SUPPLIED WITH SATELLITE ASSEMBLY.
  - 4 FASTEN TO VENT.
  - 3 WRAP BRACKET LEGS AROUND ANTENNA BASE.
  - 2 ADD RUBBER BUMPERS TO ROOF UNDER EACH END OF ANTENNA TO PREVENT CONTACT WITH THE ROOF.
  - 1 SEE DWG 76319-01-000 FOR INSTALLATION OF TV ANTENNA.

- 480 SATELLITE DISH & ELEV. SENSOR
- 290 SOLAR PANEL - 10 WATT
- ID5 ENTERTAINMENT CENTER/EXT W/CD
- 265 CODES/STANDARDS - CSA/CMVSS
- IB1 CODES/STANDARDS - USA

|                      |                        |
|----------------------|------------------------|
| FIRST USED           | 06 F33V                |
| DO NOT SCALE DRAWING |                        |
| TITLE:               | WIRING INSLT-BODY, 12V |
| SHEET 7              | PART NO 153310         |

FOR ELECTRICAL TORQUE SPECIFICATIONS SEE DWG NO. 128783-01-000

FOR ELECTRICAL CALLOUTS SEE DWG NO. 121339-01-000



FROM WIRE ASM-COACH  
8 PIN HSG  
CIRCUITS  
DS,DU,GGD,GGE,  
DR,GGF,DY

FROM WIRE ASM-COACH  
6 PIN HSG  
CIRCUITS  
GGH,GGG,GGJ  
GGL,GGK,GGM

FRONT LEFT SLIDEOUT MODULE  
CONTROL-DIGISYNC,HIGH SPEED  
149825-01-000  
SCREW  
G39-08-08U (4)

WIRE ASM-SLIDEOUT RAM,FRONT  
149553-01-000  
4 PIN HSG  
CIRCUITS  
LLS,LLT,LLW,LLU

FROM WIRE ASM-SLIDEOUT POWER  
4 PIN HSG  
CIRCUITS  
LLK,LLL,LLN,LLM

4 BRACKET-INVERTER MOUNT (REF)

AWNING MODULE (REF)

SECTION HA-HA

WIRE ASM-SLIDEOUT RAM,REAR  
149897-01-000  
4 PIN HSG  
CIRCUITS  
LLV,LLX

FROM WIRE ASM-COACH  
6 PIN HSG  
CIRCUITS  
LLY,LLZ,MMA,MMB  
MMC,MMD,DY

CONTROL SINGLE HIGH SPEED  
149828-01-000  
SCREW  
G39-08-08U (4)

FROM WIRE ASM-SLIDEOUT POWER  
4 PIN HSG  
CIRCUITS  
LLP,LLR

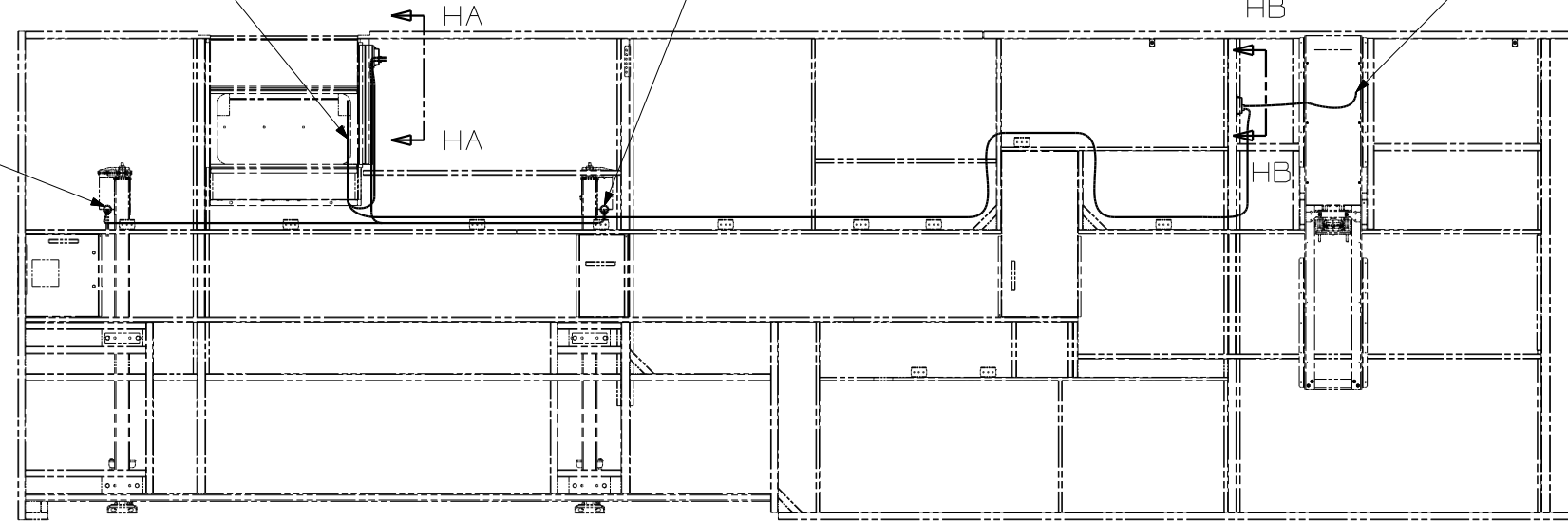
SECTION HB-HB

3 WIRE ASM-SLIDEOUT POWER  
FROM STEP BOX

FRONT LEFT FRONT RAM  
2 PIN HSG  
TO SLIDEOUT RAM MOTOR  
FROM WIRE ASM-SLIDEOUT RAM,FRONT  
CIRCUITS LLS,LLT  
3 PIN HSG  
TO SLIDEOUT RAM ENCODER  
FROM WIRE ASM-COACH  
CIRCUITS GGG,GGJ,GGH

FRONT LEFT REAR RAM  
2 PIN HSG  
TO SLIDEOUT RAM MOTOR  
FROM WIRE ASM-SLIDEOUT RAM,FRONT  
CIRCUITS LLU,LLW  
3 PIN HSG  
TO SLIDEOUT RAM ENCODER  
FROM WIRE ASM-COACH  
CIRCUITS GGK,GGM,GGL

REAR BDRM RAM  
2 PIN HSG  
TO SLIDEOUT RAM MOTOR  
FROM WIRE ASM-SLIDEOUT RAM, REAR  
CIRCUITS LLV,LLX



4 SEE WIRING INSTL-BODY,110V FOR ADDITIONAL INFORMATION.

3 SEE WIRE ASM-CHASSIS ELECTRICAL BOX FOR ADDITIONAL INFORMATION.

2. SEE WIRING DIAGRAM-BODY,12V FOR ADDITIONAL INFORMATION.

1. ALL WIRES TO BE CLAMPED WITH CLAMP 10495-01-000  
OR WIRE TIE 8343-02-000 EVERY 600MM, UNLESS OTHERWISE  
SPECIFIED.

NOTES:

- 40A INVERTER-DC/AC WITHOUT
- 265 CODES/STANDARDS-CSA/CMVSS
- 1B1 CODES/STANDARDS USA

1B1 265

|            |                       |
|------------|-----------------------|
| FIRST USED | 06 F33V               |
| TITLE      | DO NOT SCALE DRAWING  |
| TITLE      | WIRING INSTL-BODY,12V |
| SHEET 8    | PART NO 153310        |

FOR ELECTRICAL  
TORQUE  
SPECIFICATIONS  
SEE DWG NO.  
128783-01-000

FOR  
ELECTRICAL  
CALLOUTS  
SEE DWG NO.  
121339-01-000