



DANGER

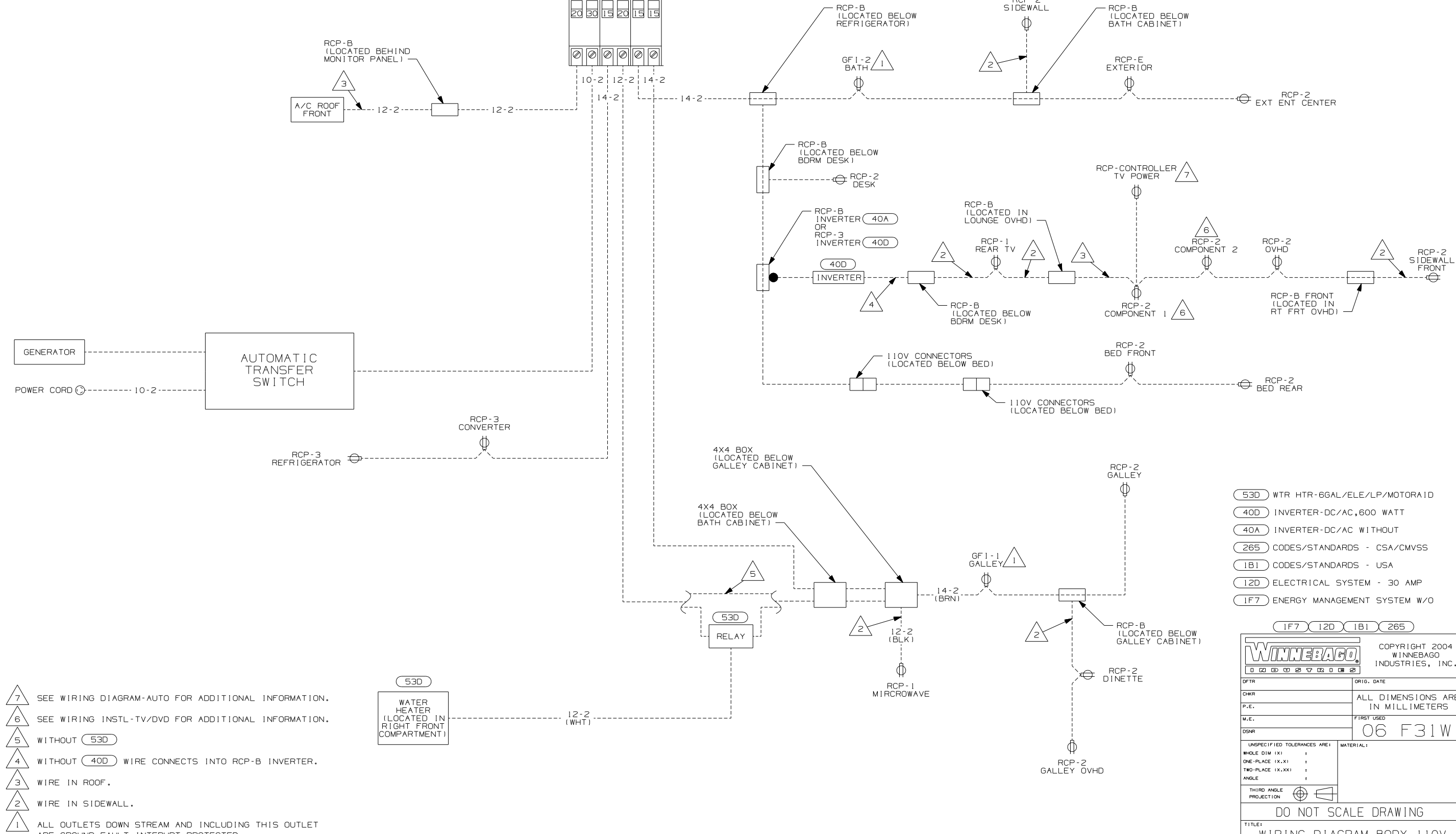
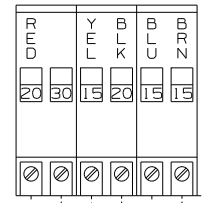
Danger of electrical shock, burns or death. Always remove all power sources before attempting any repair, service or diagnostic work. Power can be present from shore power, generator, inverter or battery. All power sources must be disabled and secured before performing any service.



CAUTION

If you lack the skills, tools or equipment to perform diagnostic or repair work leave such work to an authorized Winnebago Industries dealer or other qualified shop.

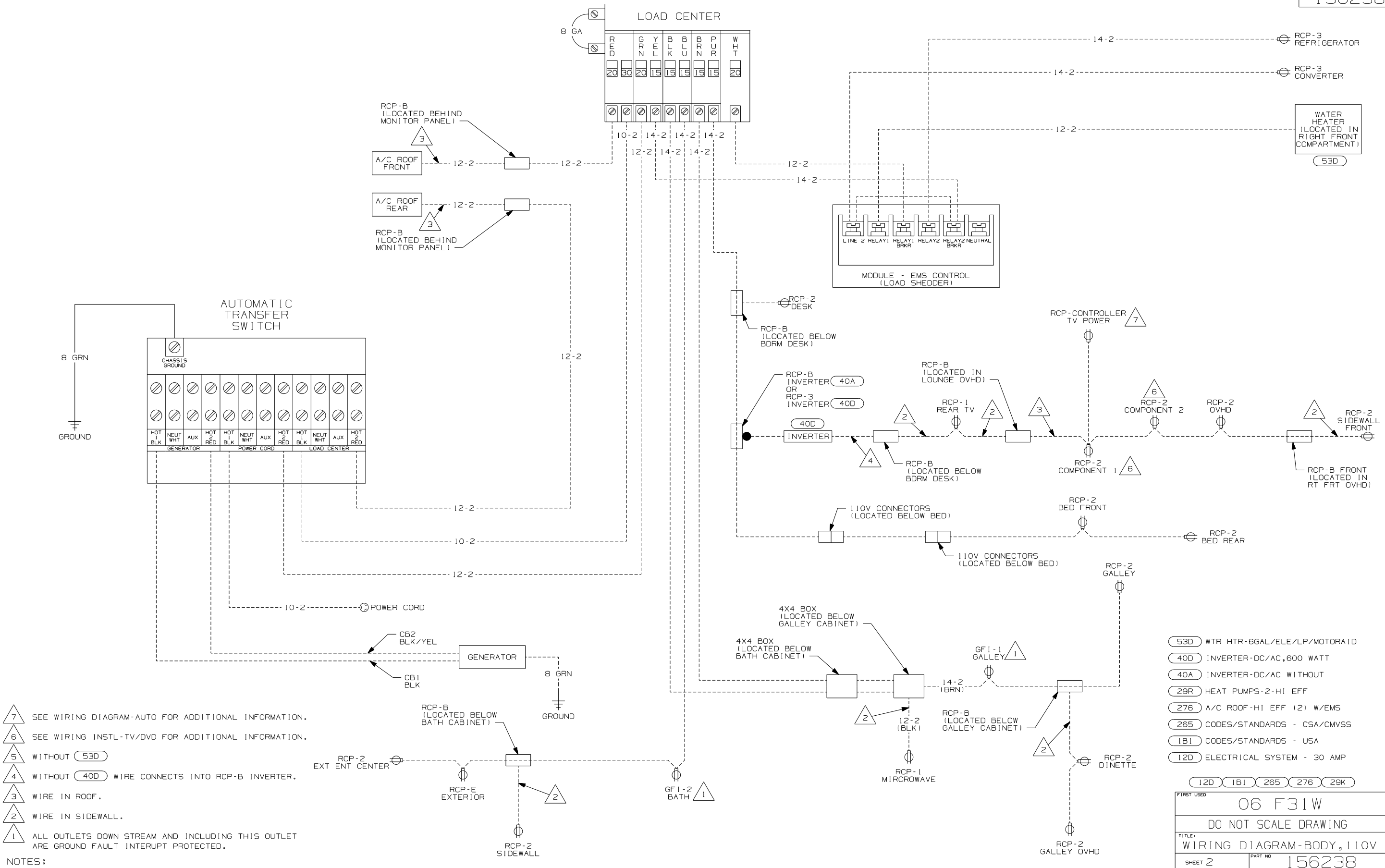
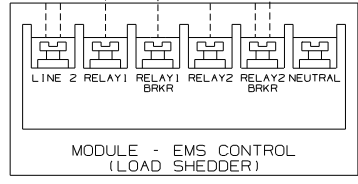
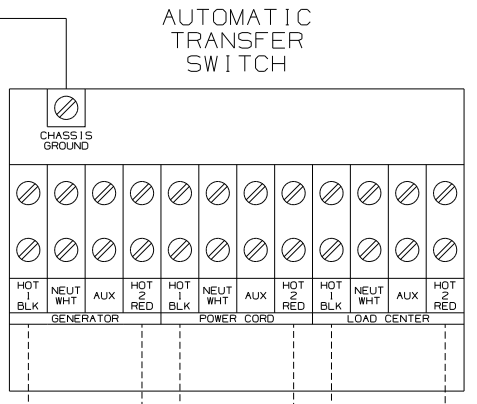
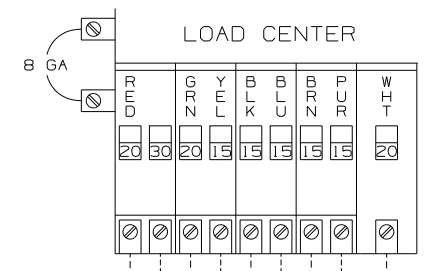
LOAD CENTER



- NOTES:
- △7 SEE WIRING DIAGRAM-AUTO FOR ADDITIONAL INFORMATION.
 - △6 SEE WIRING INSTL-TV/DVD FOR ADDITIONAL INFORMATION.
 - △5 WITHOUT (53D)
 - △4 WITHOUT (40D) WIRE CONNECTS INTO RCP-B INVERTER.
 - △3 WIRE IN ROOF.
 - △2 WIRE IN SIDEWALL.
 - △1 ALL OUTLETS DOWN STREAM AND INCLUDING THIS OUTLET ARE GROUND FAULT INTERRUPT PROTECTED.

- (53D) WTR HTR-6GAL/ELE/LP/MOTORAID
- (40D) INVERTER-DC/AC,600 WATT
- (40A) INVERTER-DC/AC WITHOUT
- (265) CODES/STANDARDS - CSA/CMVSS
- (1B1) CODES/STANDARDS - USA
- (12D) ELECTRICAL SYSTEM - 30 AMP
- (1F7) ENERGY MANAGEMENT SYSTEM W/O

| | | | |
|-------------------------------------|--------------------------------------|---|--|
| WINNEBAGO | | COPYRIGHT 2004 WINNEBAGO INDUSTRIES, INC. | |
| DFTR | ORIG. DATE | | |
| CHKR | ALL DIMENSIONS ARE IN MILLIMETERS | | |
| P.E. | | | |
| M.E. | FIRST USED | | |
| DSNR | 06 F31W | | |
| UNSPECIFIED TOLERANCES ARE: | | MATERIAL: | |
| WHOLE DIM (X) | : | | |
| ONE-PLACE (X.X) | : | | |
| TWO-PLACE (X.XX) | : | | |
| ANGLE | : | | |
| THIRD ANGLE PROJECTION | | | |
| DO NOT SCALE DRAWING | | | |
| TITLE: WIRING DIAGRAM-BODY, 110V | | | |
| SHEET 1 OF 2 | PART NO | 156238 | |
| REF: | | 1 7/29/2005 | |



- NOTES:
- 7 SEE WIRING DIAGRAM-AUTO FOR ADDITIONAL INFORMATION.
 - 6 SEE WIRING INSTL-TV/DVD FOR ADDITIONAL INFORMATION.
 - 5 WITHOUT (53D)
 - 4 WITHOUT (40D) WIRE CONNECTS INTO RCP-B INVERTER.
 - 3 WIRE IN ROOF.
 - 2 WIRE IN SIDEWALL.
 - 1 ALL OUTLETS DOWN STREAM AND INCLUDING THIS OUTLET ARE GROUND FAULT INTERRUPT PROTECTED.

- (53D) WTR HTR-6GAL/ELE/LP/MOTORA 1D
- (40D) INVERTER-DC/AC,600 WATT
- (40A) INVERTER-DC/AC WITHOUT
- (29R) HEAT PUMPS-2-HI EFF
- (276) A/C ROOF-HI EFF (2) W/EMS
- (265) CODES/STANDARDS - CSA/CMVSS
- (1B1) CODES/STANDARDS - USA
- (12D) ELECTRICAL SYSTEM - 30 AMP

| | |
|-------------------------------------|-------------------|
| FIRST USED | |
| 06 F31W | |
| DO NOT SCALE DRAWING | |
| TITLE: WIRING DIAGRAM-BODY, 110V | |
| SHEET 2 | PART NO 156238 |