



**DANGER**

**Danger of electrical shock, burns or death.** Always remove all power sources before attempting any repair, service or diagnostic work. Power can be present from shore power, generator, inverter or battery. All power sources must be disabled and secured before performing any service.

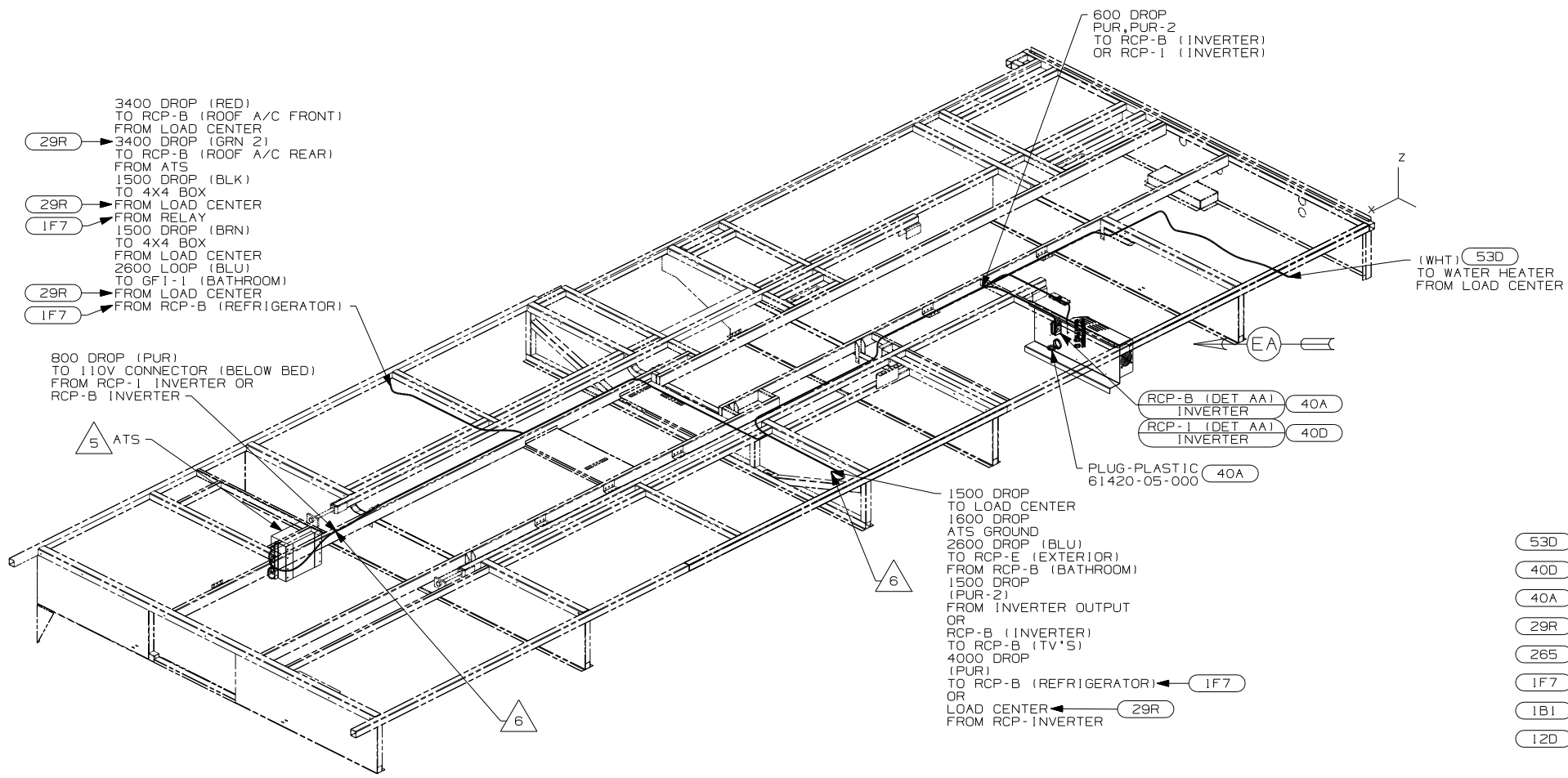


**CAUTION**

If you lack the skills, tools or equipment to perform diagnostic or repair work leave such work to an authorized Winnebago Industries dealer or other qualified shop.

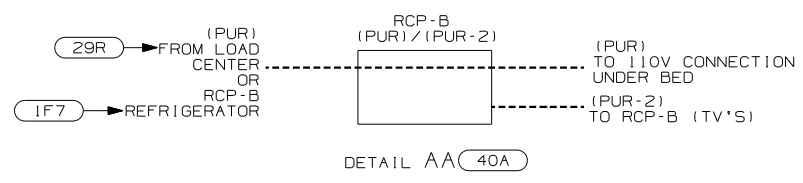
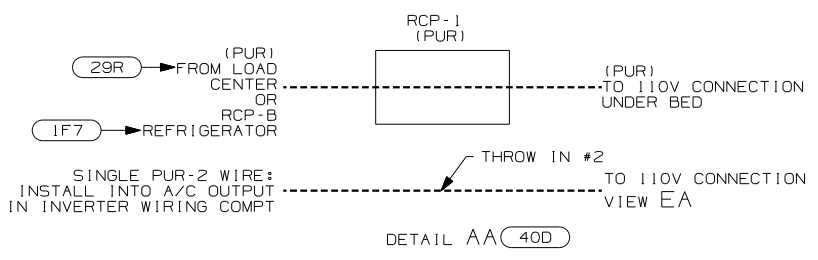
DRAWING NO.	FEATURE
156235-01	-----
156235-11	(1B1) (12D)
156235-15	(265) (12D)
156235-19	(1B1) (12D) (29R)
156235-20	(265) (12D) (29R)

RELEASE	REV DATE	DWG NO
	A	156235
REV ZONE	REVISION RECORD	DATE
		DFTR-0016



- (53D) WTR HTR - 6GAL/ELE/LP/MOTORAID
- (40D) INVERTER-DC/AC, 600 WATT
- (40A) A/C HEAT PUMP-2 HI EFFICIENCY
- (29R) A/C HEAT PUMP-2 HI EFFICIENCY
- (265) CODES/STANDARDS - CSA/CMVSS
- (1F7) ENERGY MANAGEMENT SYSTEM W/O
- (1B1) CODES/STANDARDS - USA
- (12D) ELECTRICAL SYSTEM - 30 AMP

- 7 MOUNT 4X4 BOX ON BACK OF COMPARTMENT OVER HOLES.
- 6 WIRE PASSES THROUGH FLOOR AT THIS POINT.
- 5 FOR MORE INFORMATION SEE LOAD CENTER/ATS ASM.
- 4. FOR MORE INFORMATION SEE WIRING DIAGRAM-BODY, 110V.
- 3. ALL GROUND WIRE TO BE COVERED WITH TUBING 8041-02-000.
- 2. ALL 110V WIRE TO BE CLAMPED WITH CLAMP 10497-05-000 WITHIN 200MM OF OUTLET BOXES, USE SCREW G67-10-12B.
- 1. ALL WIRES TO BE SECURED WITH CLAMP 10495-01-000 OR CLIP 80734-01-000 EVERY 600MM. USE SCREW G67-10-12B UNLESS OTHERWISE SPECIFIED.



FOR ELECTRICAL TORQUE SPECIFICATIONS SEE DWG NO. 128783-01-000

(X-X) FOR ELECTRICAL CALLOUTS SEE DWG NO. 121339-01-000

(12D) (1B1) (265)

**WINNEBAGO** COPYRIGHT 2004 WINNEBAGO INDUSTRIES, INC.

DFTR	ORIG. DATE
CHKR	ALL DIMENSIONS ARE IN MILLIMETERS
P.E.	
M.E.	FIRST USED
DSNR	06 F31W

UNSPECIFIED TOLERANCES ARE: MATERIAL:

WHOLE DIM (X) :  
ONE-PLACE (X.X) :  
TWO-PLACE (X.XX) :  
ANGLE :

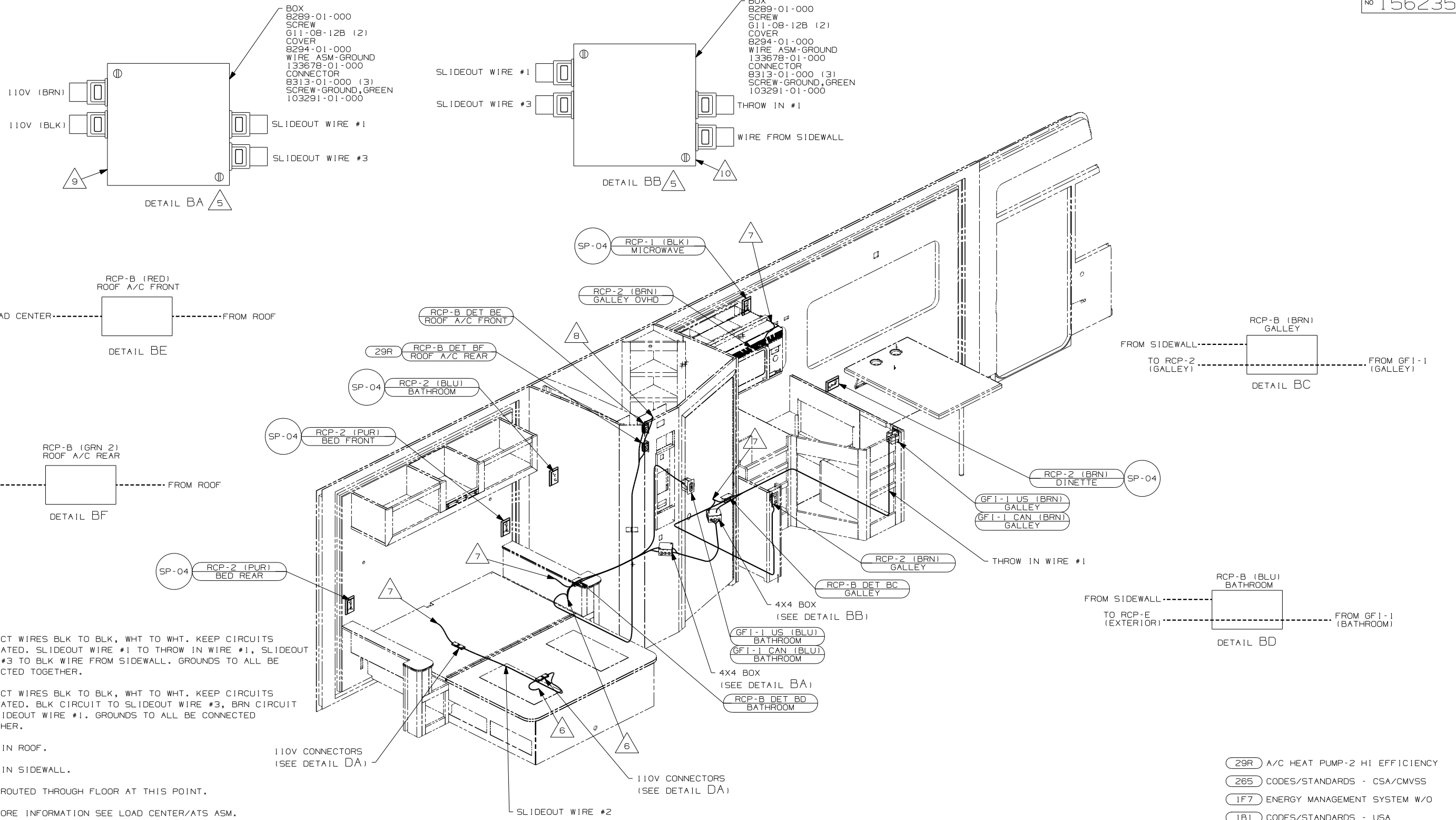
THIRD ANGLE PROJECTION

DO NOT SCALE DRAWING

TITLE: WIRING INSTL-BODY, 110V

SHEET 1 OF 5 PART NO 156235

REF: 1 11/8/2005



- BOX 8289-01-000
- SCREW 611-08-12B (2)
- COVER 8294-01-000
- WIRE ASM-GROUND 133678-01-000
- CONNECTOR 8313-01-000 (3)
- SCREW-GROUND, GREEN 103291-01-000

- BOX 8289-01-000
- SCREW 611-08-12B (2)
- COVER 8294-01-000
- WIRE ASM-GROUND 133678-01-000
- CONNECTOR 8313-01-000 (3)
- SCREW-GROUND, GREEN 103291-01-000

- 10 CONNECT WIRES BLK TO BLK, WHT TO WHT. KEEP CIRCUITS SEPARATED. SLIDEOUT WIRE #1 TO THROW IN WIRE #1, SLIDEOUT WIRE #3 TO BLK WIRE FROM SIDEWALL. GROUNDS TO ALL BE CONNECTED TOGETHER.
- 9 CONNECT WIRES BLK TO BLK, WHT TO WHT. KEEP CIRCUITS SEPARATED. BLK CIRCUIT TO SLIDEOUT WIRE #3, BRN CIRCUIT TO SLIDEOUT WIRE #1. GROUNDS TO ALL BE CONNECTED TOGETHER.
- 8 WIRE IN ROOF.
- 7 WIRE IN SIDEWALL.
- 6 WIRE ROUTED THROUGH FLOOR AT THIS POINT.
- 5 FOR MORE INFORMATION SEE LOAD CENTER/ATS ASM.

- 4. FOR MORE INFORMATION SEE WIRING DIAGRAM-BODY, 110V.
- 3. ALL GROUND WIRES TO BE COVERED WITH TUBING 8041-02-000.
- 2. ALL 110V WIRE TO BE CLAMPED WITH CLAMP 10497-05-000 WITHIN 200MM OF OUTLET BOXES, USE SCREW 667-10-12B.
- 1. ALL WIRES TO BE SECURED WITH CLAMP 10495-01-000 OR CLIP 80734-01-000 EVERY 600MM. USE SCREW 667-10-12B UNLESS OTHERWISE SPECIFIED.

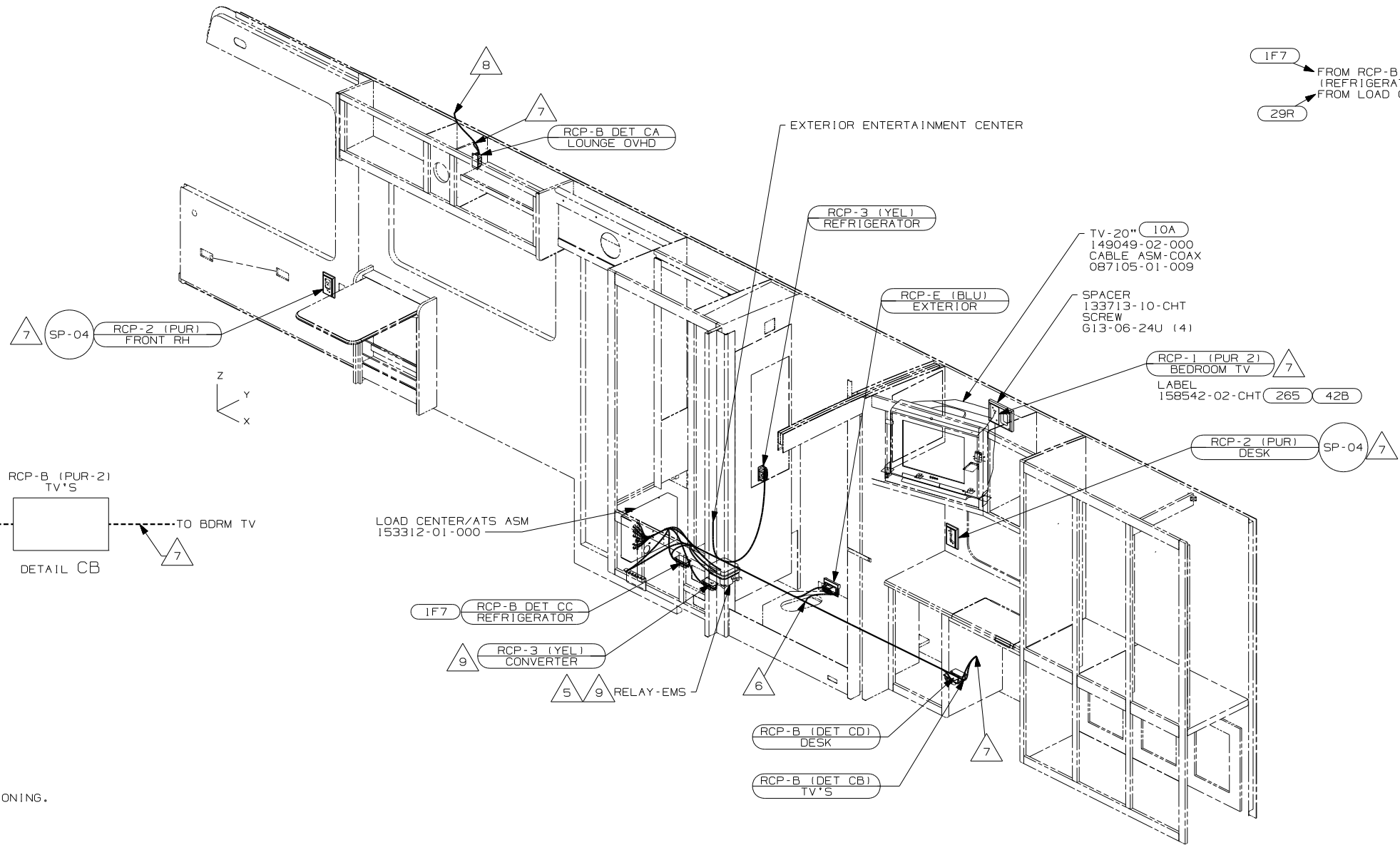
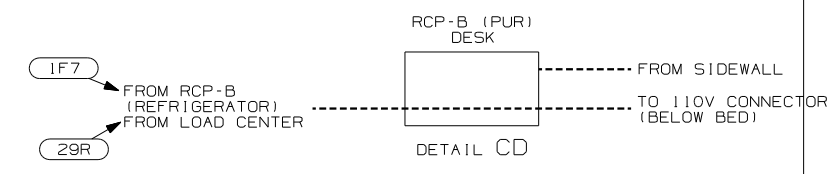
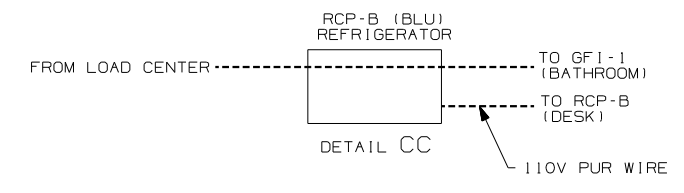
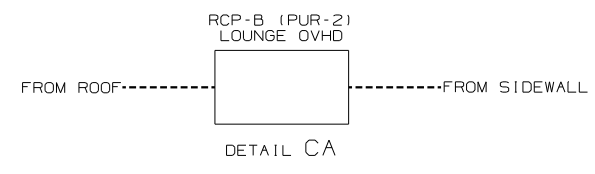
NOTES:

- 29R A/C HEAT PUMP-2 HI EFFICIENCY
- 265 CODES/STANDARDS - CSA/CMVSS
- IF7 ENERGY MANAGEMENT SYSTEM W/O
- 1B1 CODES/STANDARDS - USA
- 12D ELECTRICAL SYSTEM - 30 AMP

FOR ELECTRICAL TORQUE SPECIFICATIONS SEE DWG NO. 128783-01-000

FOR ELECTRICAL CALLOUTS SEE DWG NO. 121339-01-000

FIRST USED	
06 F31W	
DO NOT SCALE DRAWING	
TITLE: WIRING INSTL-BODY, 110V	
SHEET 2	PART NO 156235



- 9 SEE DETAIL DB FOR POSITIONING.
- 8 WIRE IN ROOF.
- 7 WIRE IN SIDEWALL.
- 6 WIRE ROUTED THROUGH FLOOR AT THIS POINT.
- 5 FOR MORE INFORMATION SEE LOAD CENTER/ATS ASM.
4. FOR MORE INFORMATION SEE WIRING DIAGRAM-BODY,110V.
3. ALL GROUND WIRES TO BE COVERED WITH TUBING 8041-02-000.
2. ALL 110V WIRE TO BE CLAMPED WITH CLAMP 10497-05-000 WITHIN 200MM OF OUTLET BOXES, USE SCREW G67-10-12B.
1. ALL WIRES TO BE SECURED WITH CLAMP 10495-01-000 OR CLIP 80734-01-000 EVERY 600MM. USE SCREW G67-10-12B UNLESS OTHERWISE SPECIFIED.

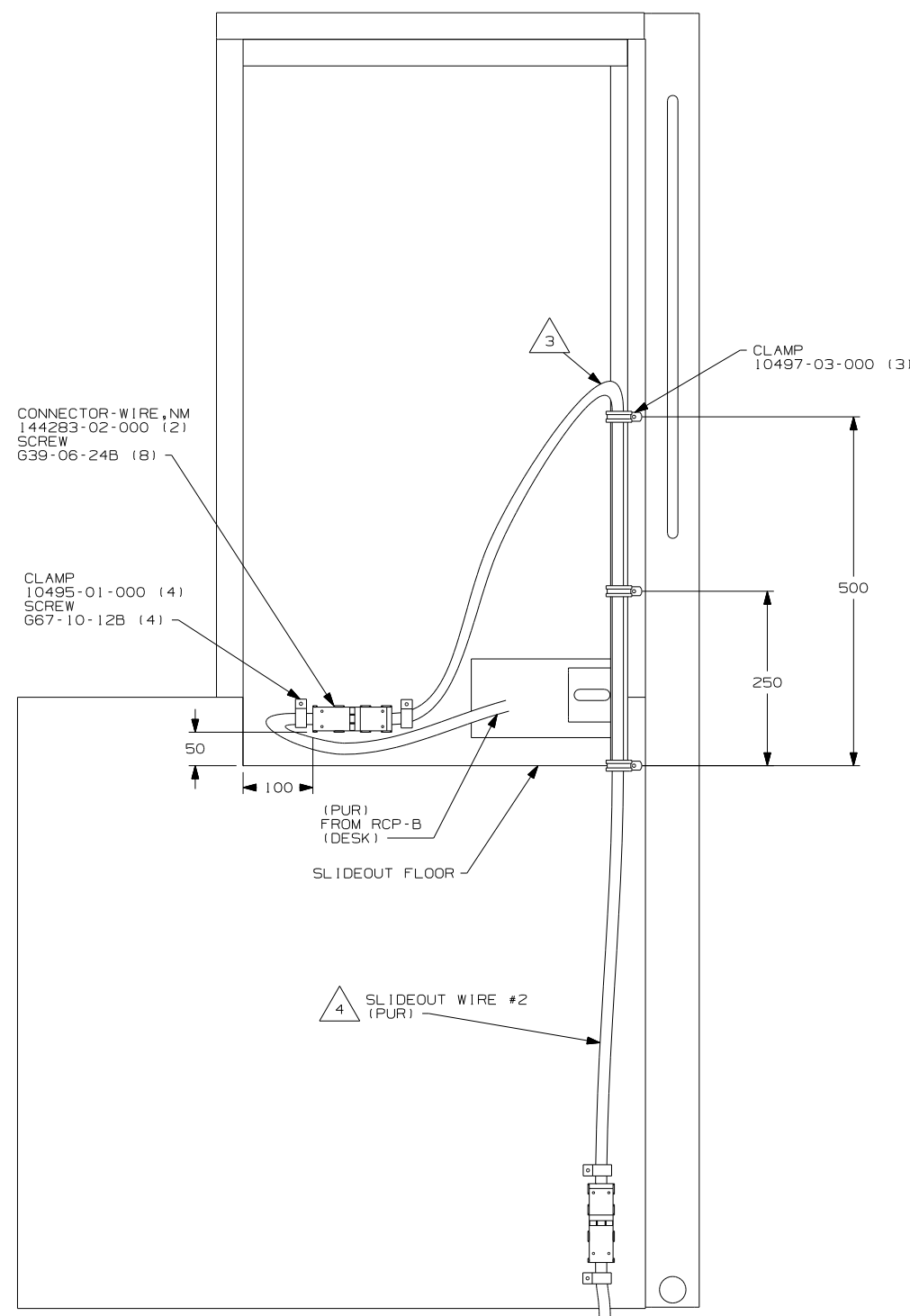
- 42B TV, REAR-WITHOUT
- 29R A/C HEAT PUMP-2 HI EFFICIENCY
- 265 CODES/STANDARDS - CSA/CMVSS
- 1F7 ENERGY MANAGEMENT SYSTEM W/O
- 1B1 CODES/STANDARDS - USA
- 12D ELECTRICAL SYSTEM - 30 AMP
- 10A TV (REAR) - 20" COLOR, STEREO

NOTES:

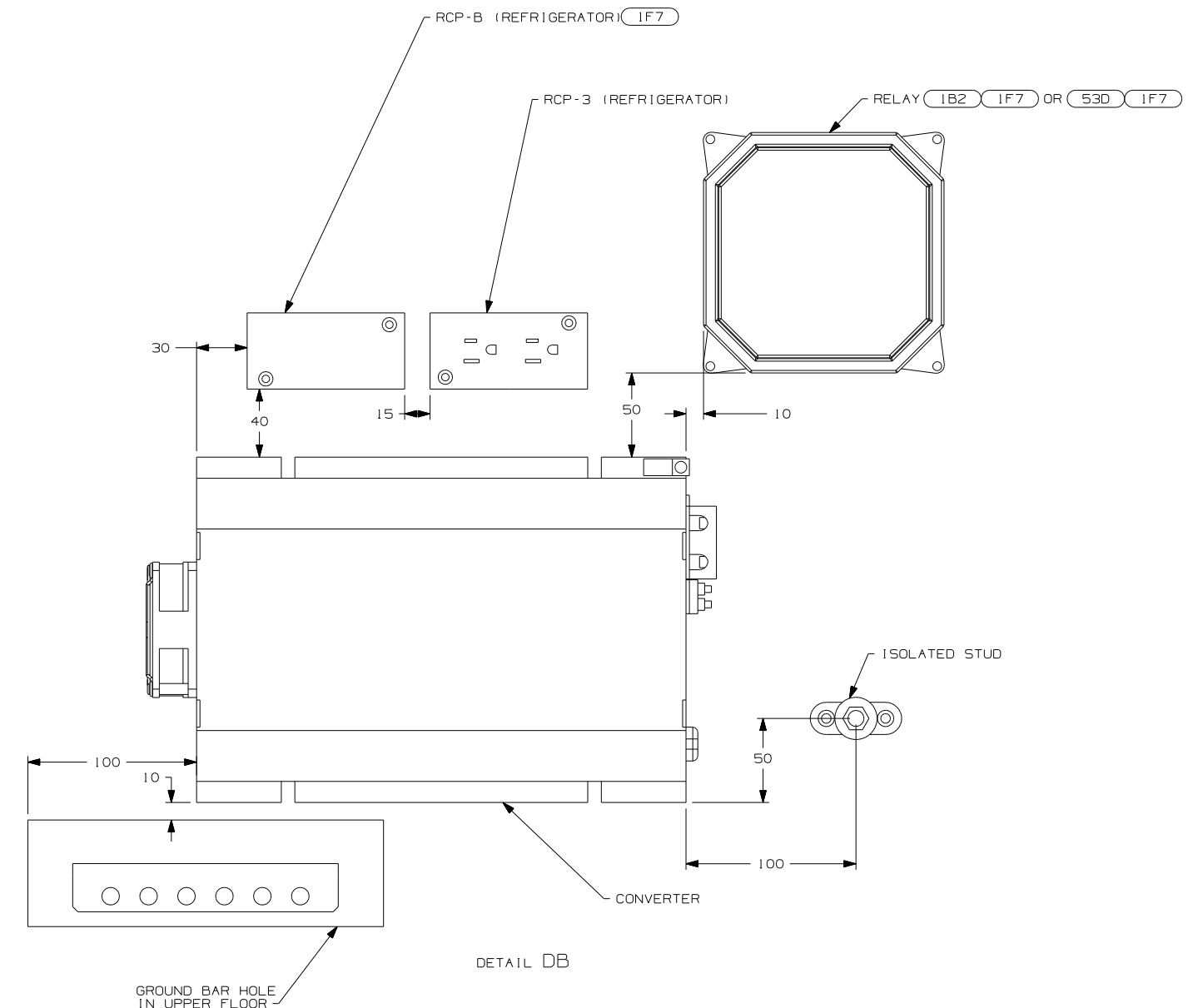
FOR ELECTRICAL TORQUE SPECIFICATIONS SEE DWG NO. 128783-01-000

FOR ELECTRICAL CALLOUTS SEE DWG NO. 121339-01-000

FIRST USED	
06 F31W	
DO NOT SCALE DRAWING	
TITLE: WIRING INSTL-BODY, 110V	
SHEET 3	PART NO 156235



DETAIL DA



DETAIL DB

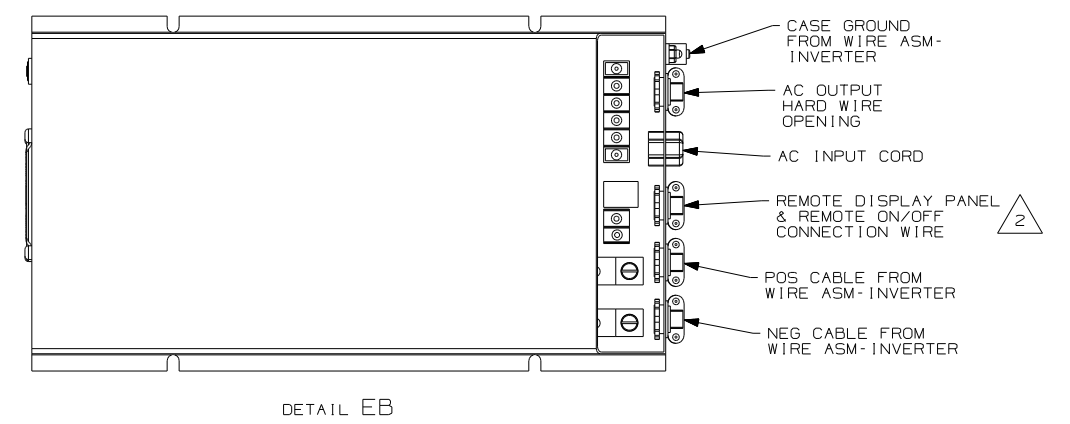
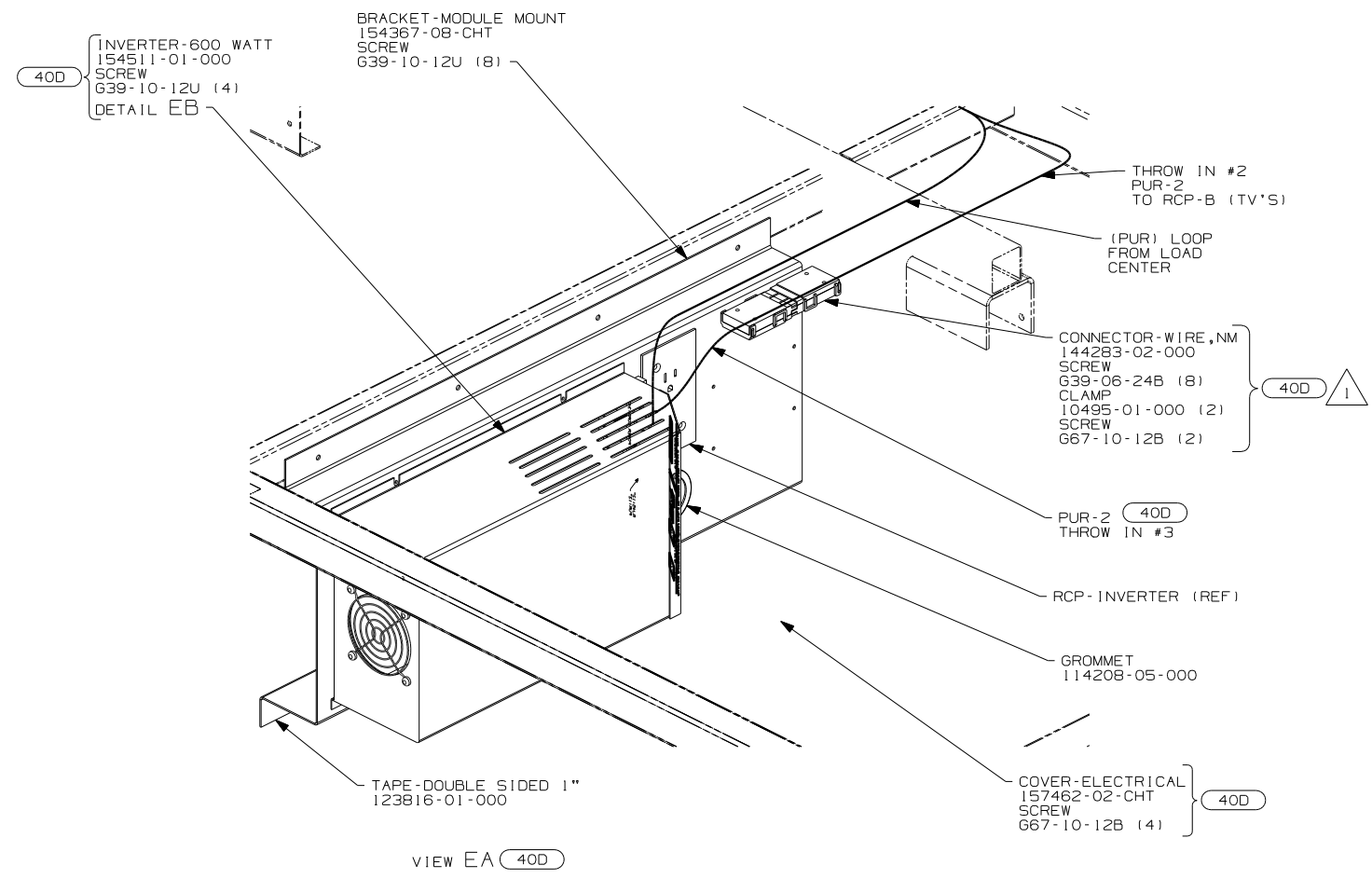
- NOTES:
- 1. WIRE MUST BE ROUTED THROUGH CLAMPS AS SHOWN.
  - 2. RUN 12V WIRE ALONG WITH SLIDEOUT WIRE.
  - 3. MAKE LOOP AS SMALL AS POSSIBLE WHEN SLIDEOUT IS COMPLETELY RETRACTED.
  - 4. FOR MORE INFORMATION SEE LOAD CENTER/ATS ASM.

- (53D) WTR HTR-6GAL/ELE/LP/MOTORA1D
- (265) CODES/STANDARDS - CSA/CMVSS
- (1F7) ENERGY MANAGEMENT SYSTEM W/O
- (1B2) WTR HTR-10GAL/ELEC/LP/MTRA1D
- (1B1) CODES/STANDARDS - USA
- (12D) ELECTRICAL SYSTEM - 30 AMP

FOR ELECTRICAL TORQUE SPECIFICATIONS SEE DWG NO. 128783-01-000

FOR ELECTRICAL CALLOUTS SEE DWG NO. 121339-01-000

FIRST USED	
(12D) (1B1) (265)	
06 F31W	
DO NOT SCALE DRAWING	
TITLE:	
WIRING INSTL-BODY, 110V	
SHEET 4	PART NO
	156235



NOTES:

2 WB FROM WIRE ASM-COACH TO PUR WIRE FROM INVERTER.

1 FOR MORE INFORMATION SEE LOAD CENTER/ATS ASM.

FIRST USED	06 F31W
TITLE	DO NOT SCALE DRAWING
SHEET 5	WIRING INSTL-BODY,110V
PART NO	156235