



DANGER

Danger of electrical shock, burns or death. Always remove all power sources before attempting any repair, service or diagnostic work. Power can be present from shore power, generator, inverter or battery. All power sources must be disabled and secured before performing any service.



CAUTION

If you lack the skills, tools or equipment to perform diagnostic or repair work leave such work to an authorized Winnebago Industries dealer or other qualified shop.

	8	7	6	5	4	3	2	1
	F31W	F33V	F35A	F35D	F36M	F38J		
BLK	14-UL	136131-06-070	136131-06-035	136131-06-060	136131-06-035	136131-06-119	136131-06-040	(276) (29H) (29R)
	14-CA	136134-06-070	136134-06-035	136134-06-060	136134-06-035	136134-06-119	136134-06-040	(276) (29H) (29R)
BLK	12-UL	136135-06-070	N/A	N/A	N/A	N/A	N/A	(1F7)
	12-CA	136136-06-070	N/A	N/A	N/A	N/A	N/A	(1F7)
BLU	14-UL	136131-02-157	136131-02-080	136131-02-140	136131-02-080	136131-02-200	136131-02-115	
	14-CA	136134-02-157	136134-02-080	136134-02-140	136134-02-080	136134-02-200	136134-02-115	
BRN	14-UL	136131-03-070	136131-03-090	136131-03-070	136131-03-120	136131-03-171	136131-03-045	
	14-CA	136134-03-070	136134-03-090	136134-03-070	136134-03-120	136134-03-171	136134-03-045	
GLD	12-UL	N/A	N/A	136135-10-065	N/A	136135-10-112	136135-10-068	(21M) (54E)
	12-CA	N/A	N/A	136136-10-065	N/A	136136-10-112	136136-10-068	(21M) (54E)
GRN	12-UL	N/A	136135-08-118	136135-08-085	136135-08-115	136135-08-085	136135-08-095	(276) (29H) (29R) (78J)
	12-CA	N/A	136136-08-118	136136-08-085	136136-08-115	136136-08-085	136136-08-095	(276) (29H) (29R) (78J)
	12-UL	136135-08-075	136135-08-100	136135-08-067	136135-08-105	136135-08-056	136135-08-060	(276) (29H) (29R) (12D)
	12-CA	136136-08-075	136136-08-100	136136-08-067	136136-08-105	136136-08-056	136136-08-060	(276) (29H) (29R) (12D)
GRN 2	12-UL	136135-14-067	136135-14-065	136135-14-054	136135-14-054	136135-14-054	136135-14-054	(276) (29H) (29R) (12D)
	12-CA	136136-14-067	136136-14-065	136136-14-054	136136-14-054	136136-14-054	136136-14-054	(276) (29H) (29R) (12D)
PUR	14-UL	136131-04-160	136131-04-180	136131-04-160	136131-04-170	136131-04-170	136131-04-140	
	14-CA	136134-04-160	136134-04-180	136134-04-160	136134-04-170	136134-04-170	136134-04-140	
RED	12-UL	136135-07-096	136135-07-118	136135-07-085	136135-07-115	136135-07-085	136135-07-095	
	12-CA	136136-07-096	136136-07-118	136136-07-085	136136-07-115	136136-07-085	136136-07-095	
WHT	12-UL	136135-09-079	136135-09-075	136135-09-050	136135-09-085	136135-09-075	136135-09-040	(1B2) (53D)
	12-CA	136136-09-079	136136-09-075	136136-09-050	136136-09-085	136136-09-075	136136-09-040	(1B2) (53D)
YEL	14-UL	136131-05-028	N/A	N/A	N/A	N/A	N/A	(1F7)
	14-CA	136134-05-028	N/A	N/A	N/A	N/A	N/A	(1F7)
YEL	14-UL	136131-05-014	136131-05-030	136131-05-054	136131-05-030	136131-05-119	136131-05-052	(276) (29H) (29R)
	14-CA	136134-05-014	136134-05-030	136134-05-054	136134-05-030	136134-05-119	136134-05-052	(276) (29H) (29R)
YEL 2	14-UL	136131-13-028	136131-13-055	136131-13-050	136131-13-055	136131-13-101	136131-13-055	(276) (29H) (29R)
	14-CA	136134-13-028	136134-13-055	136134-13-050	136134-13-055	136134-13-101	136134-13-055	(276) (29H) (29R)
MAIN	10-UL	136137-01-075	136137-01-100	136137-01-067	136137-01-105	136137-01-056	136137-01-060	(12D)
	10-CA	136138-01-075	136138-01-100	136138-01-067	136138-01-105	136138-01-056	136138-01-060	(12D)
	6-3 UL	N/A	136139-01-100	136139-01-067	136139-01-105	136139-01-056	136139-01-060	(78J)
	6-3 CA	N/A	136140-01-100	136140-01-067	136140-01-105	136140-01-056	136140-01-060	(78J)
MAIN GROUND		136145-01-020	136145-01-034	136145-01-045	136145-01-034	136145-01-040	136145-01-045	
ATS GROUND		136145-01-060	136145-01-065	136145-01-048	136145-01-070	136145-01-026	136145-01-061	(276) (29H) (29R)
CONDUIT ASM-CENTRAL A/C		N/A	N/A	151704-01-015	151704-01-015	151704-01-015	151704-01-015	

RELEASE	REV DATE	OWG NO	153312
REV ZONE	REVISION RECORD	DATE	DFTR-ORIG

- (12D) ELECTRICAL SYSTEM 30 AMP
- (29H) A/C CENTRAL HEAT PUMP
- (78J) ELECTRICAL SYSTEM 50 AMP
- (54E) WASHER/DRYER
- (53D) WTR HTR-6GAL/ELE/LP/MOTORAID
- (29R) AC HEAT PUMP-2 HI EFFICIENCY
- (276) A/C ROOF-HI EFF (2) W/EMS
- (21M) WASHER/DRYER PREP
- (1F7) ENERGY MANAGEMENT SYSTEM W/O
- (1B2) WTR HTR-10GAL/ELEC/LP/MTRAID
- (265) CODES/STANDARDS-CSA/CMVSS
- (1B1) CODES/STANDARDS USA

		COPYRIGHT 2004 WINNEBAGO INDUSTRIES, INC.	
DFTR	ORIG. DATE		
CHKR	ALL DIMENSIONS ARE IN MILLIMETERS		
P.E.			
M.E.	FIRST USED		
DSNR	06 F-SERIES		
UNSPECIFIED TOLERANCES ARE:		MATERIAL:	
WHOLE DIM (X)	:		
ONE-PLACE (X.X)	:		
TWO-PLACE (X.XX)	:		
ANGLE	:		
THIRD ANGLE PROJECTION			
DO NOT SCALE DRAWING			
TITLE: LOAD CENTER/ATS ASM			
SHEET 1 of 6	PART NO	153312	
REF: 10/13/2005			

SEE DETAIL FA
NOTES:

	8	7	6	5	4	3	2	1
		F31W	F33V	F35A	F35D	F36M	F38J	
D THROW IN WIRE #1	14-UL	136131-03-080	136131-03-063	136131-03-055	136131-03-068	136131-03-072	136131-03-055	
	14-CA	136134-03-080	136134-03-063	136134-03-055	136134-03-068	136134-03-072	136134-03-055	
D THROW IN WIRE #2	14-UL	136131-12-050	136131-12-080	136131-02-026	136131-12-090	136131-12-006 (40D)	136131-12-158	
	14-CA	136134-12-050	136134-12-080	136134-02-026	136134-12-090	136134-12-006 (40D)	136134-12-158	
D THROW IN WIRE #3	14-UL	136131-12-006 (40D)	136131-12-006 (40D)	136131-02-021	136131-12-006 (40D)	136131-12-105	136131-03-006	
	14-CA	136134-12-006 (40D)	136134-12-006 (40D)	136134-02-021	136134-12-006 (40D)	136134-12-105	136134-03-006	
D THROW IN WIRE #4	14-UL	N/A	N/A	136131-12-075	----	N/A	136131-12-030	
	14-CA	N/A	N/A	136134-12-075	----	N/A	136134-12-030	
D THROW IN WIRE #5	14-UL	N/A	N/A	136131-12-006 (40D)	----	N/A	136131-03-075	
	14-CA	N/A	N/A	136134-12-006 (40D)	----	N/A	136134-03-075	
D THROW IN WIRE #6	14-UL	N/A	----	----	----	N/A	136131-12-008 (40D)	
	14-CA	N/A	----	----	----	N/A	136134-12-008 (40D)	
C SLIDEOUT WIRE #1		136151-03-030	136151-03-028	136151-03-030	136135-03-028	136151-03-028	136151-03-038	
C SLIDEOUT WIRE #2		136151-04-026	136151-04-017	136151-04-017	136135-04-017	136151-04-017	136151-04-017	
C SLIDEOUT WIRE #3		136152-06-030	N/A	136151-06-020	----	N/A	136151-06-038	
C SLIDEOUT WIRE #4		N/A	N/A	136151-02-020	----	N/A	136151-12-025	
C SLIDEOUT WIRE #5		N/A	N/A	----	----	N/A	136151-03-025	



NOTES:

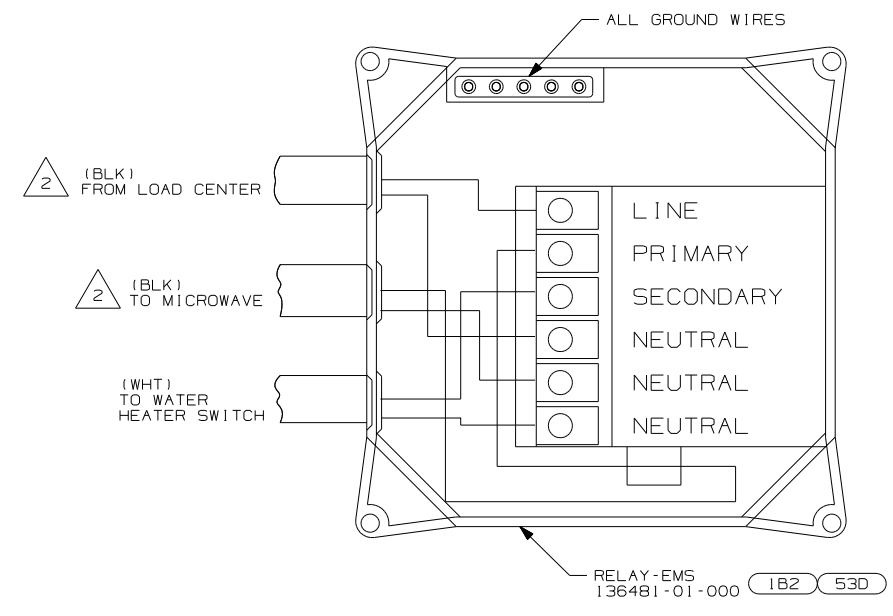
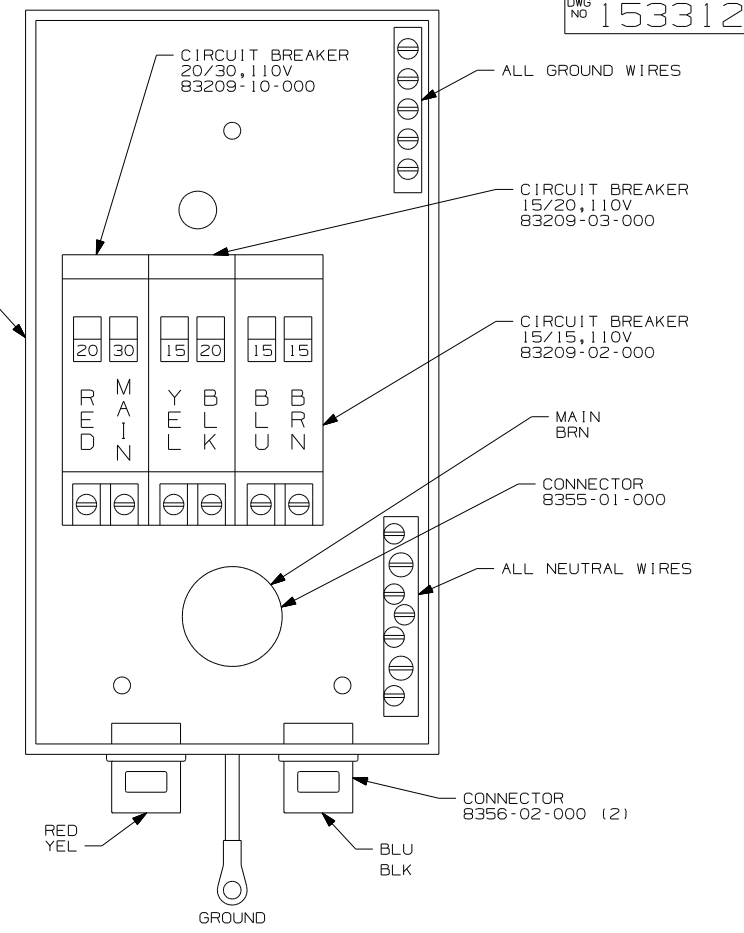
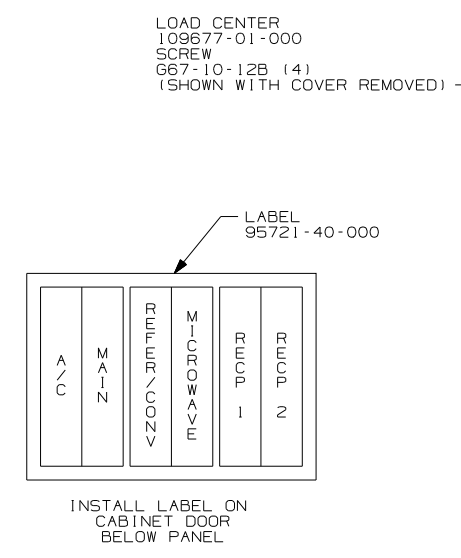
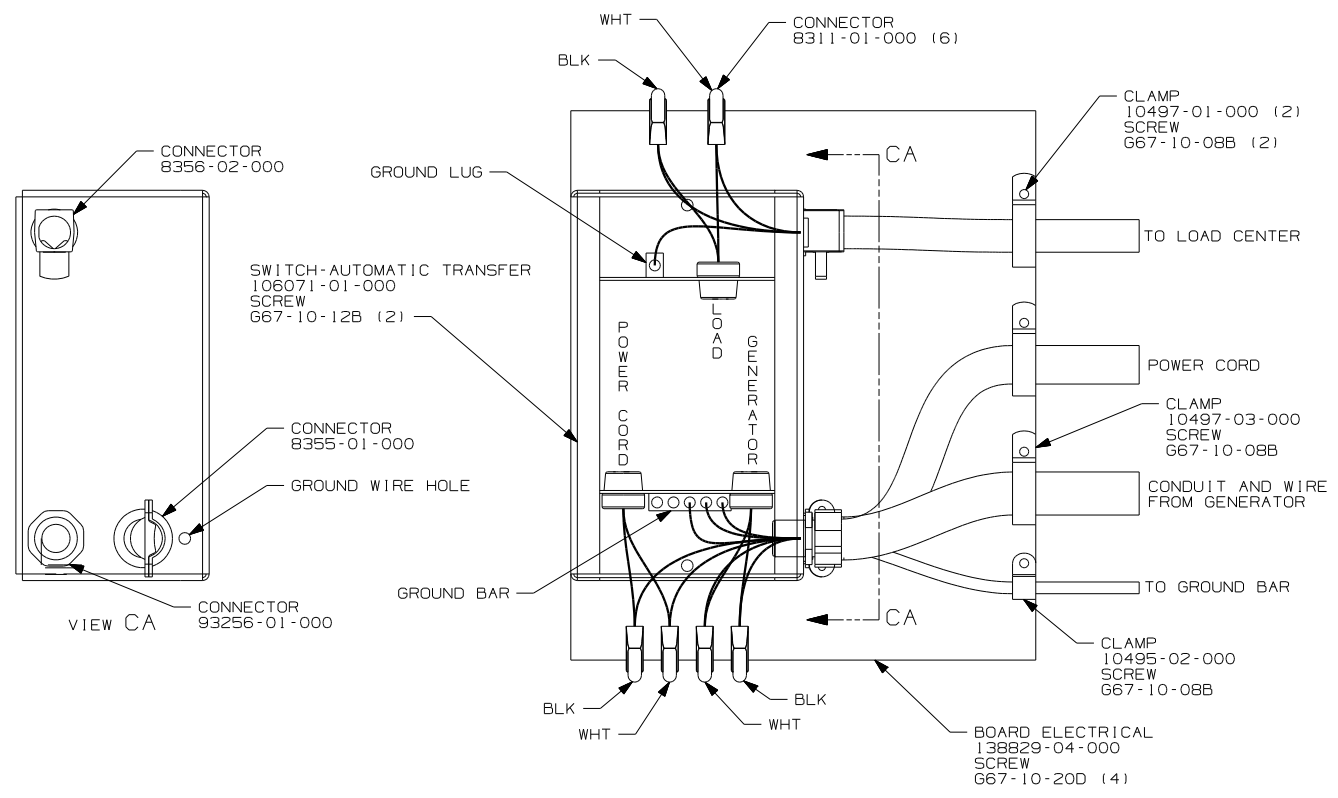
- SEE DETAIL FE
- SEE DETAIL FD
- SEE DETAIL FC
- SEE DETAIL FB
- SEE DETAIL FA

(78J) ELECTRICAL SYSTEM-50 AMP
 (40D) INVERTER-DC/AC,600 WATT
 (12D) ELECTRICAL SYSTEM 30 AMP
 (265) CODES/STANDARDS-CSA/CMVSS
 (1B1) CODES/STANDARDS USA

(1B1) (265) (12D) (78J)

FIRST USED	06 F-SERIES
TITLE:	DO NOT SCALE DRAWING
SHEET 2	PART NO 153312

10/13/2005



- 1B2 WTR HTR-10GAL/ELEC/LP/MTR A1D
- 53D WTR HTR-6GAL/ELE/LP/MOTORA1D
- 12D ELECTRICAL SYSTEM 30 AMP
- 1F7 ENERGY MANAGEMENT SYSTEM W/O
- 265 CODES/STANDARDS-CSA/CMVSS
- 1B1 CODES/STANDARDS USA

△ MEASURE 1000MM FROM THE BACK OF THE LOAD CENTER, LOOP THE BLACK WIRE AND CONNECT AS SHOWN.

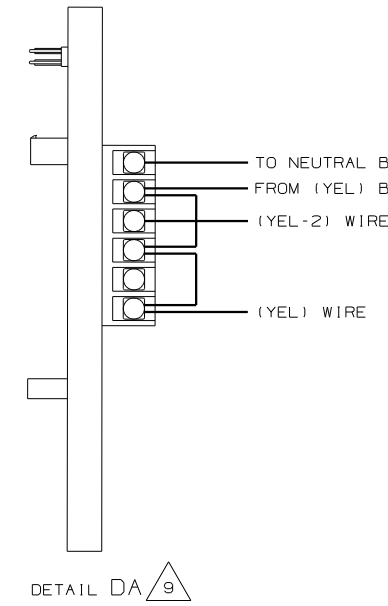
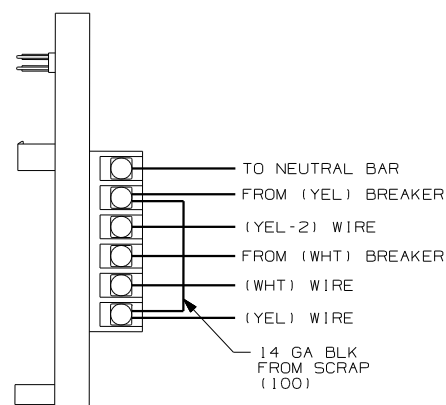
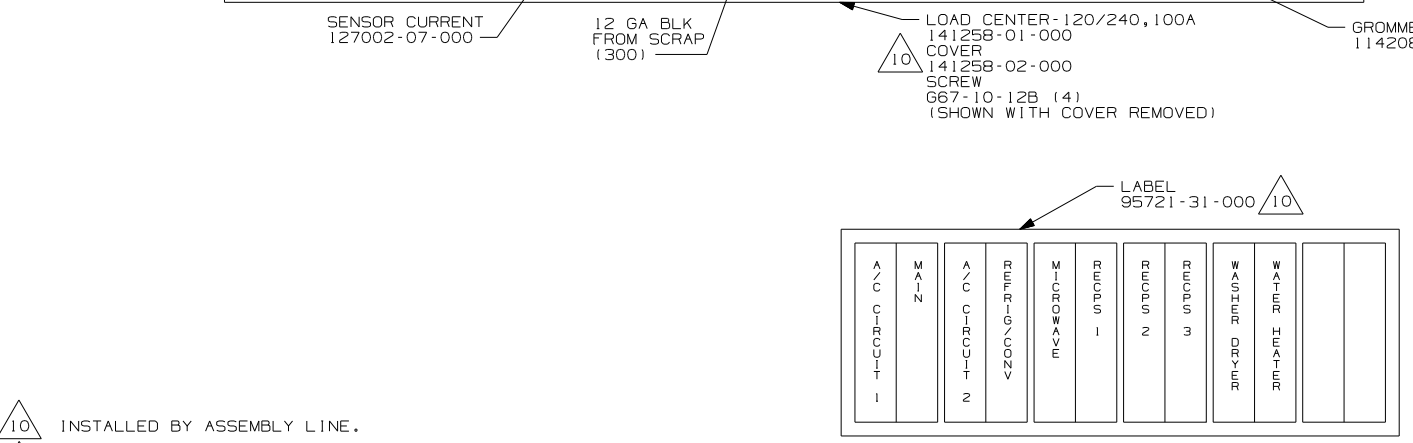
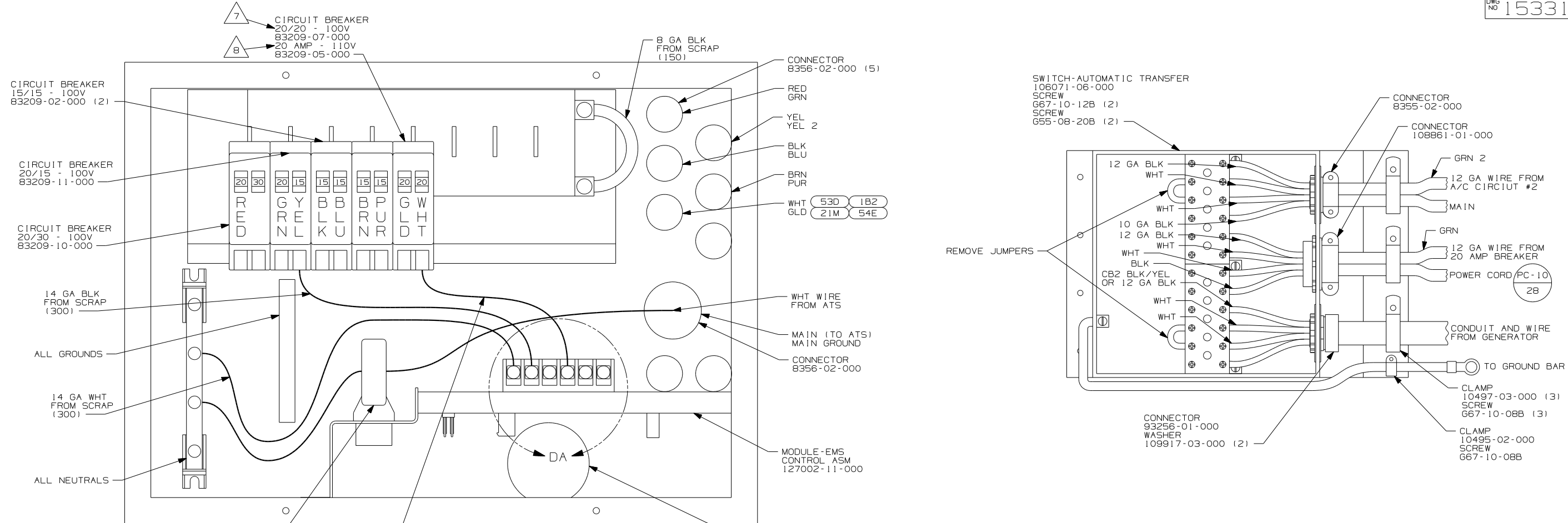
1. ALL GROUND WIRES TO BE COVERED WITH TUBING 8041-02-000.

NOTES:

FOR ELECTRICAL TORQUE SPECIFICATIONS SEE DWG NO. 128783-01-000

FOR ELECTRICAL CALLOUTS SEE DWG NO. 121339-01-000

FIRST USED	
06 F-SERIES	
DO NOT SCALE DRAWING	
TITLE: LOAD CENTER/ATS ASM	
SHEET 3	PART NO 153312



- NOTES:
- 1. ALL GROUND WIRES TO BE COVERED WITH TUBING 8041-02-000.
 - 2. GROUND WIRES ARE NOT SHOWN FOR CLARITY.
 - 3. ALL WIRES TO BE CLAMPED WITHIN 200MM OF ATS.
 - 4. ALL 110V STRANDED WIRE W/O TERMINALS TO BE STRIPPED 10MM AND SOLDER DIPPED.
 - 5. ATTACH WIRES TO BACKSIDE OF LOAD CENTER, USE EXISTING HOLES AND TIE-WIRE 116673-01-000.
 - 6. ALL WIRES MUST BE 500MM LONG INSIDE LOAD CENTER.

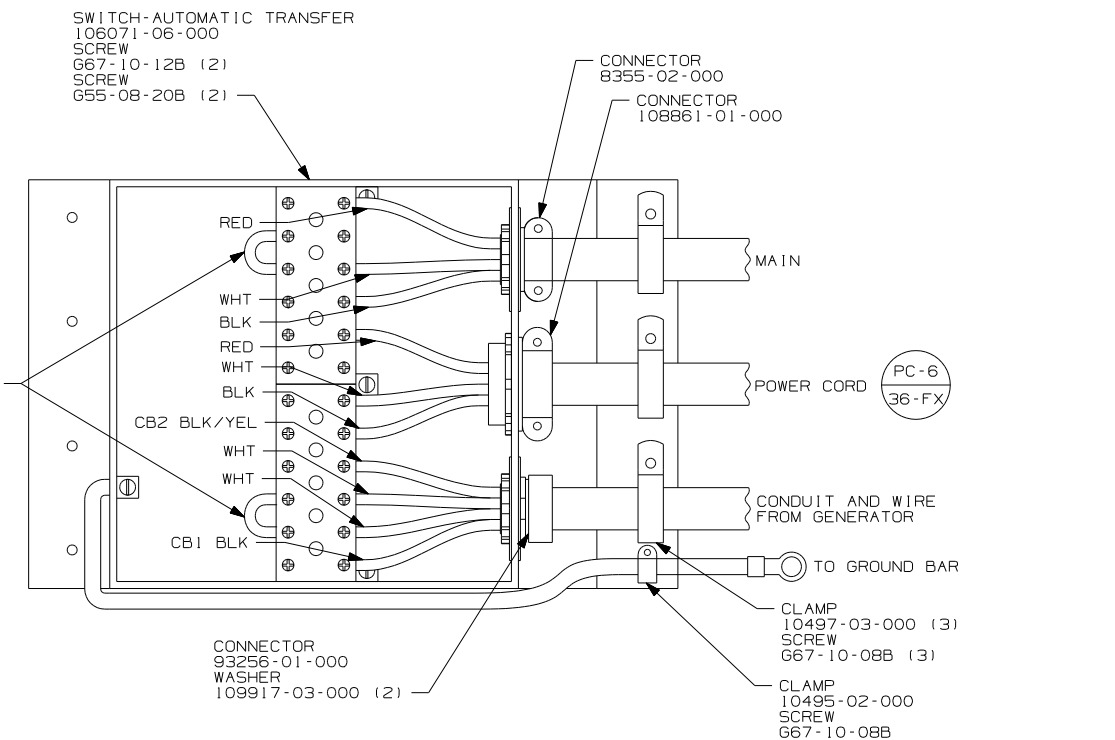
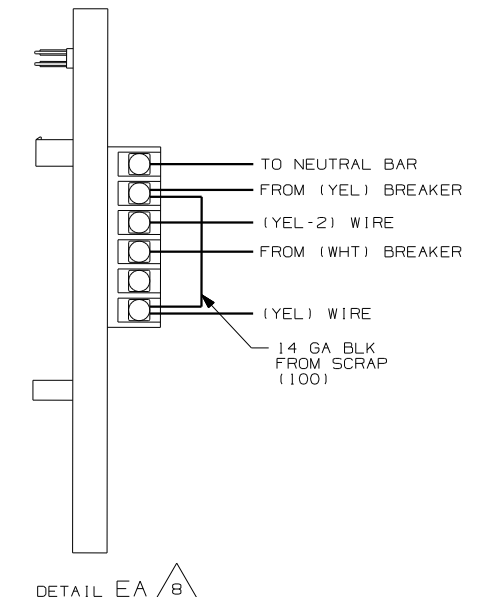
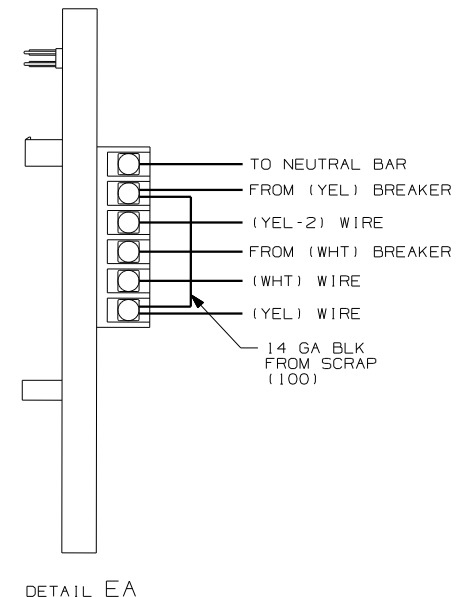
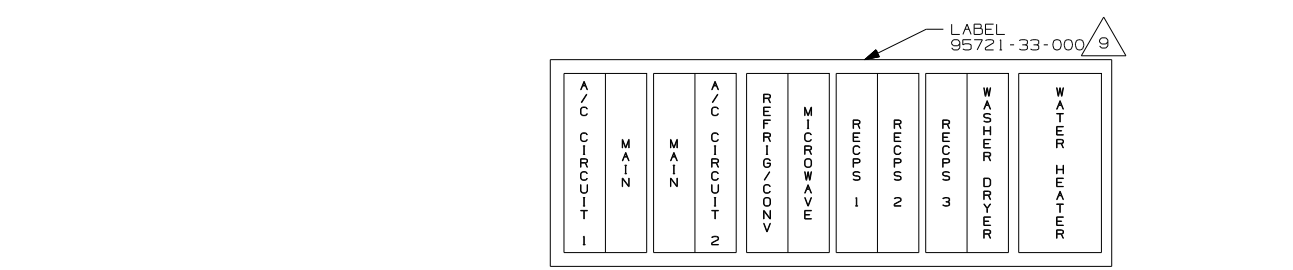
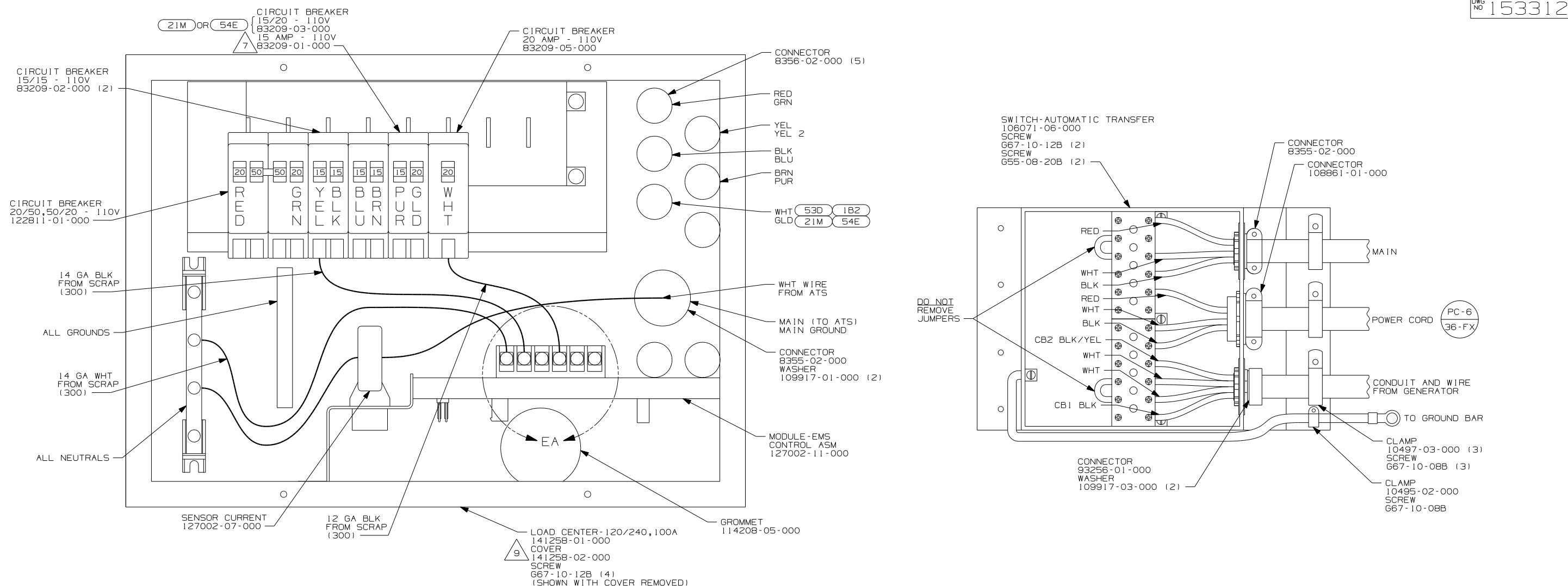
INSTALL LABEL ON FRONT PANEL BELOW BREAKERS BETWEEN MOUNTING HOLES

FOR ELECTRICAL TORQUE SPECIFICATIONS SEE DWG NO. 128783-01-000

FOR ELECTRICAL CALLOUTS SEE DWG NO. 121339-01-000

- (611) WTR HTR-AUX AUTO/MOTORAID
- (1B2) WTR HTR-10GAL/ELEC/LP/MTRAID
- (54E) WASHER/DRYER
- (53D) WTR HTR-6GAL/ELE/LP/MOTORAID
- (21M) WASHER/DRYER PREP
- (29H) A/C CENTRAL HEAT PUMP
- (29R) AC HEAT PUMP-2 HI EFFICIENCY
- (276) A/C ROOF-HI EFF (2) W/EMS
- (12D) ELECTRICAL SYSTEM 30 AMP
- (265) CODES/STANDARDS-CSA/CMVSS
- (1B1) CODES/STANDARDS USA

FIRST USED	06 F-SERIES
TITLE	DO NOT SCALE DRAWING
SHEET 4	PART NO 153312
LOAD CENTER/ATS ASM	



- NOTES:
1. ALL GROUND WIRES TO BE COVERED WITH TUBING 8041-02-000.
 2. GROUND WIRES ARE NOT SHOWN FOR CLARITY.
 3. ALL WIRES TO BE CLAMPED WITHIN 200MM OF ATS.
 4. ALL 110V STRANDED WIRE W/O TERMINALS TO BE STRIPPED 10MM AND SOLDER DIPPED.
 5. ATTACH WIRES TO BACKSIDE OF LOAD CENTER, USE EXISTING HOLES AND TIE-WIRE 116673-01-000.
 6. ALL WIRES MUST BE 500MM LONG INSIDE LOAD CENTER.

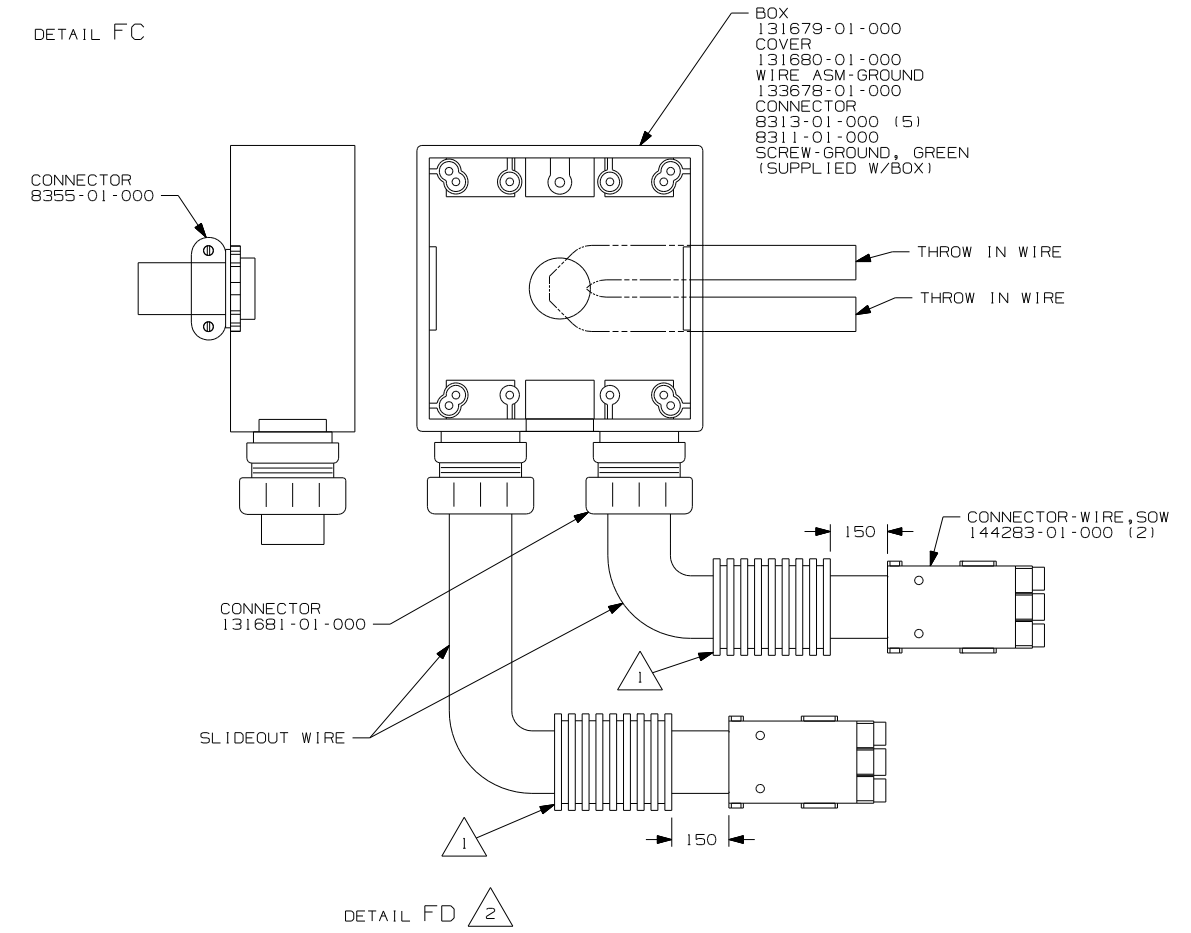
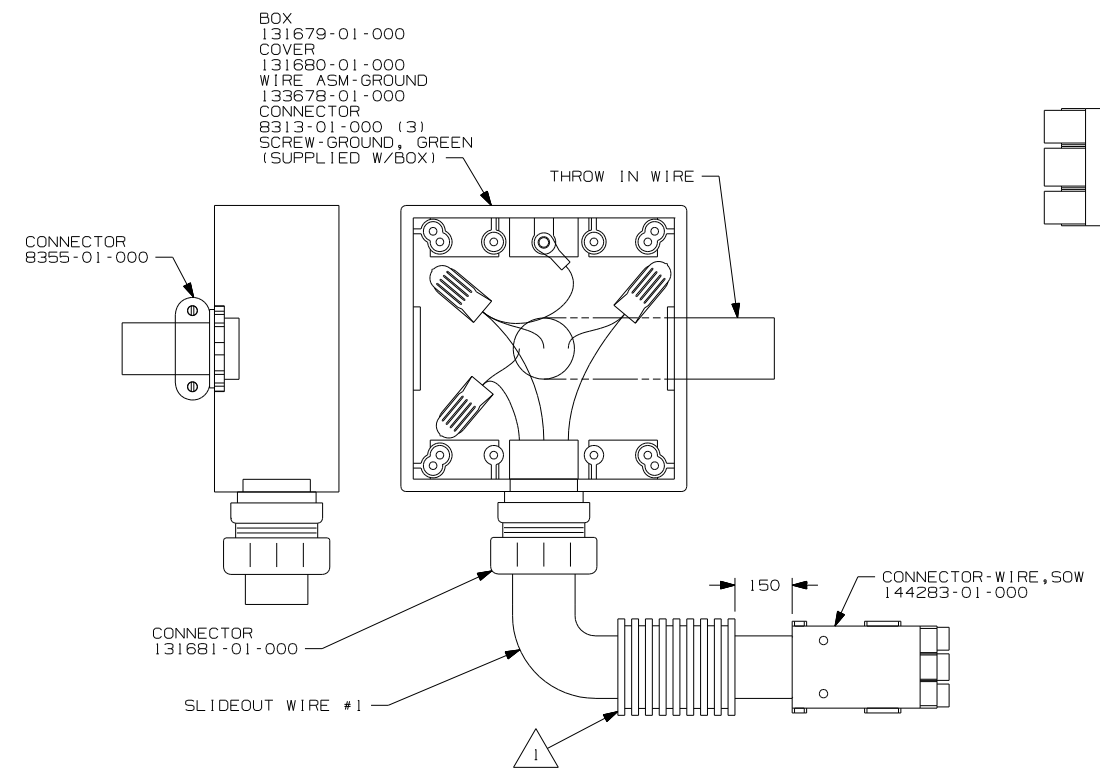
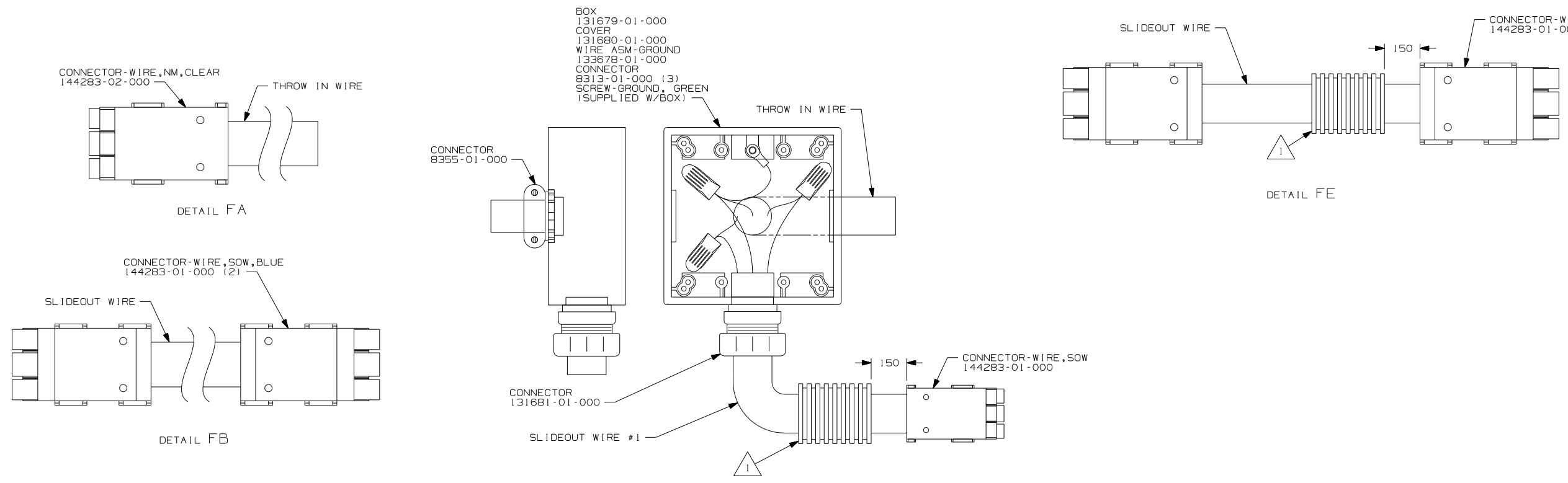
- 9 INSTALLED BY ASSEMBLY LINE.
- 8 WITHOUT (53D) OR (1B2)
- 7 WITHOUT (21M) OR (54E)

FOR ELECTRICAL TORQUE SPECIFICATIONS SEE DWG NO. 128783-01-000

FOR ELECTRICAL CALLOUTS SEE DWG NO. 121339-01-000

- (53D) WTR HTR-6GAL/ELE/LP/MOTORAID
- (1B2) WTR HTR-10GAL/ELEC/LP/MTRAID
- (54E) WASHER/DRYER
- (1F7) ENERGY MANAGEMENT SYSTEM W/O
- (21M) WASHER/DRYER PREP
- (29H) A/C CENTRAL HEAT PUMP
- (29R) AC HEAT PUMP-2 HI EFFICIENCY
- (276) A/C ROOF-HI EFF (2) W/EMS
- (78J) ELECTRICAL SYSTEM-50 AMP
- (265) CODES/STANDARDS-CSA/CMVSS
- (1B1) CODES/STANDARDS USA

FIRST USED	06 F-SERIES
TITLE	DO NOT SCALE DRAWING
TITLE	LOAD CENTER/ATS ASM
SHEET 5	PART NO 153312



2 THE BLACK INDIVIDUAL CONDUCTORS FOR EACH SPECIFIC COLORED CIRCUIT ARE TO BE CONNECTED TOGETHER. THE WHITE INDIVIDUAL CONDUCTORS FOR EACH SPECIFIC COLORED CIRCUIT ARE TO BE CONNECTED TOGETHER. ALL GROUND WIRES ARE TO BE CONNECTED TOGETHER.

1 APPLY 300MM OF CONDUIT-CONVOLUTE 41953-05-000 OVER WIRE AT DIMENSION SHOWN AND SECURE BOTH ENDS OF TUBING TO WIRE WITH TAPE 8363-01-000.

NOTES:

- 78J ELECTRICAL SYSTEM-50 AMP
- 12D ELECTRICAL SYSTEM 30 AMP
- 265 CODES/STANDARDS-CSA/CMVSS
- 1B1 CODES/STANDARDS USA

1B1	265	12D	78J
FIRST USED			
06 F-SERIES			
DO NOT SCALE DRAWING			
TITLE:			
LOAD CENTER/ATS ASM			
SHEET 6		PART NO	
		153312	