



DANGER

Danger of electrical shock, burns or death. Always remove all power sources before attempting any repair, service or diagnostic work. Power can be present from shore power, generator, inverter or battery. All power sources must be disabled and secured before performing any service.

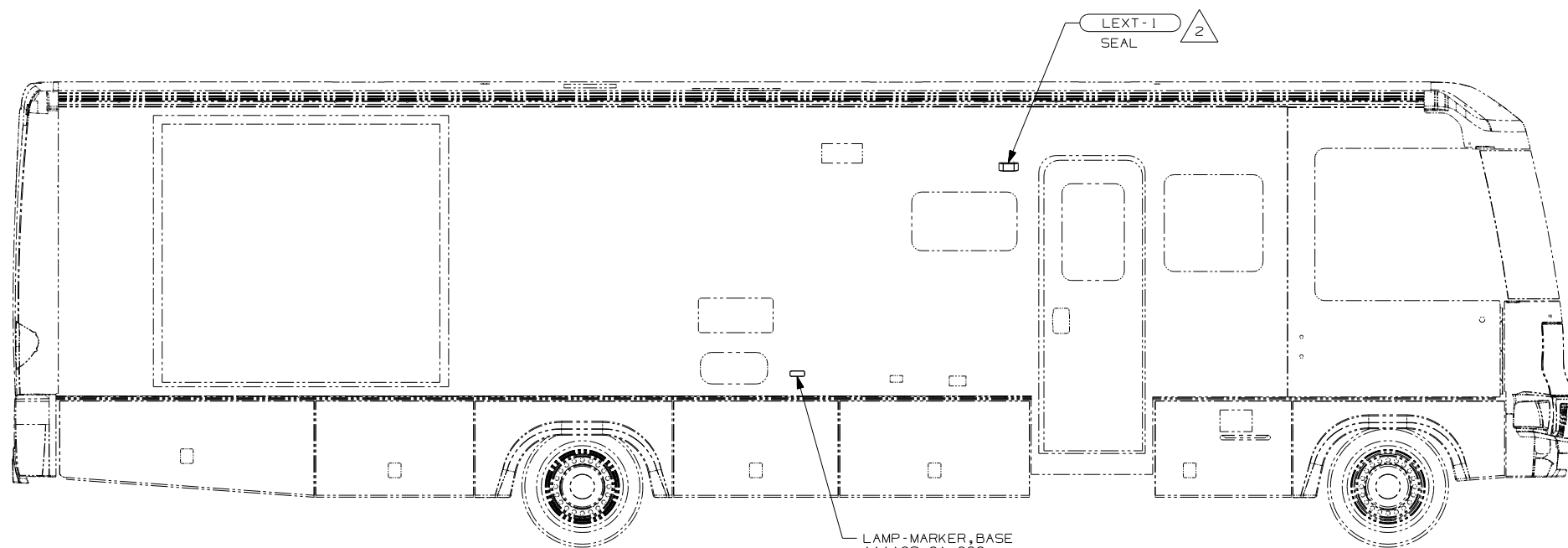


CAUTION

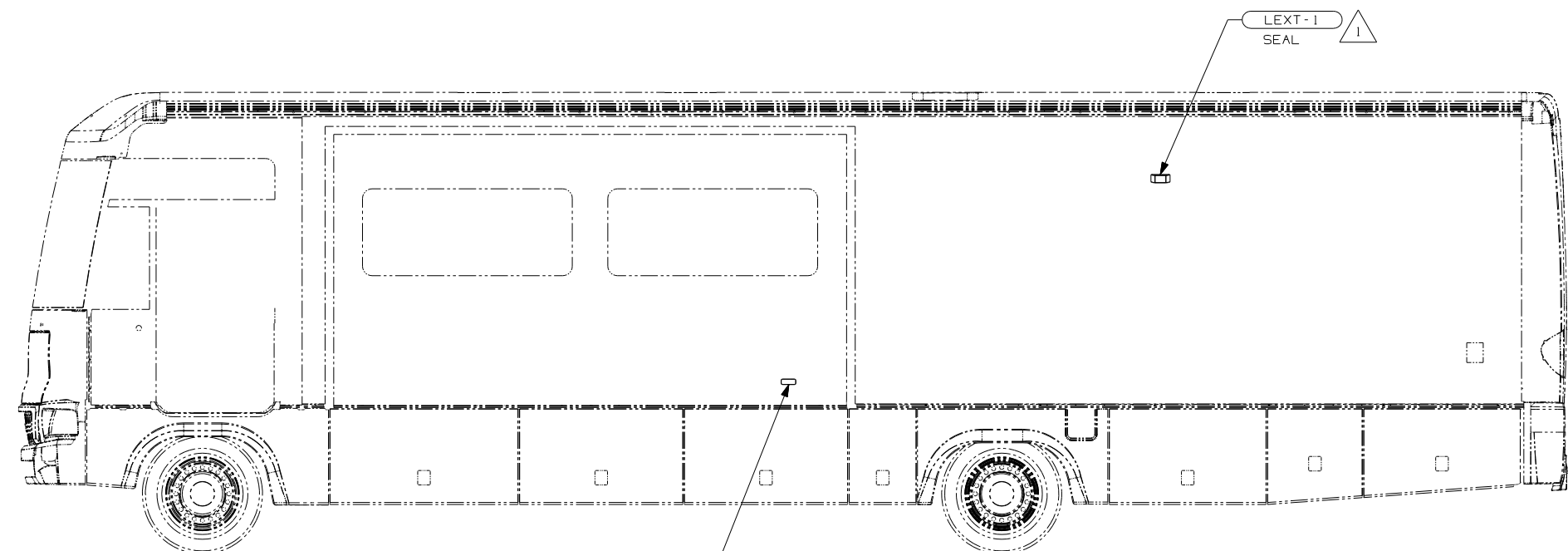
If you lack the skills, tools or equipment to perform diagnostic or repair work leave such work to an authorized Winnebago Industries dealer or other qualified shop.

DRAWING NO.	FEATURE
152104-01	(WIN)
152104-02	(ITA)

RELEASE	REV DATE	DWG NO
A		152104
REV ZONE	REVISION RECORD	DATE DFR-0R16



LAMP-MARKER, BASE
 111102-01-000
 LAMP-MARKER, LENS, AMBER
 111102-02-000
 SCREW
 611-08-12U (EXT) (2)



LAMP-MARKER, BASE
 111102-01-000
 LAMP-MARKER, LENS, AMBER
 111102-02-000
 SCREW
 611-08-12U (EXT) (2)

- (9E1) ELECTRICAL/AC PACKAGE
 - (ITA) ITASCA ONLY
 - (WIN) WINNEBAGO ONLY
 - (265) CODES/STANDARDS-CSA/CMVSS
 - (1B1) CODES/STANDARDS USA
- (1B1) (265)

WINNEBAGO COPYRIGHT 2004 WINNEBAGO INDUSTRIES, INC.

DFTR	ORIG. DATE
CHKR	ALL DIMENSIONS ARE IN MILLIMETERS
P.E.	
M.E.	FIRST USED
DSNR	06 F-SERIES

UNSPECIFIED TOLERANCES ARE: MATERIAL:

HOLE DIM (X)	: 3
ONE-PLACE (X.X)	: 1.5
TWO-PLACE (X.XX)	: 0.50
ANGLE	: 1°

THIRD ANGLE PROJECTION

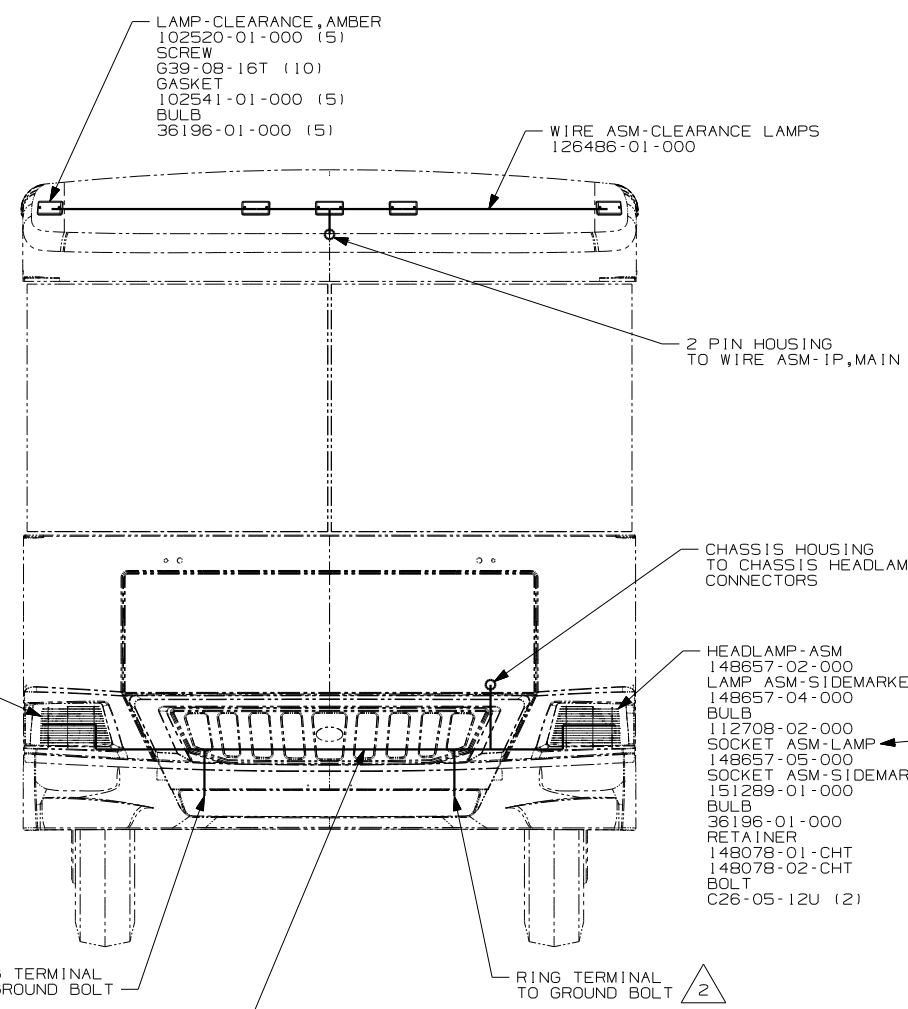
NOTES:

△2 USE ON F-SERIES & F-SHELLS WITH (9E1)

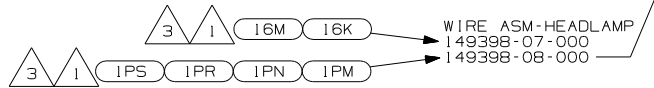
△1 NOT USED ON F-SHELLS.

FOR ELECTRICAL TORQUE SPECIFICATIONS SEE DWG NO. 128783-01-000

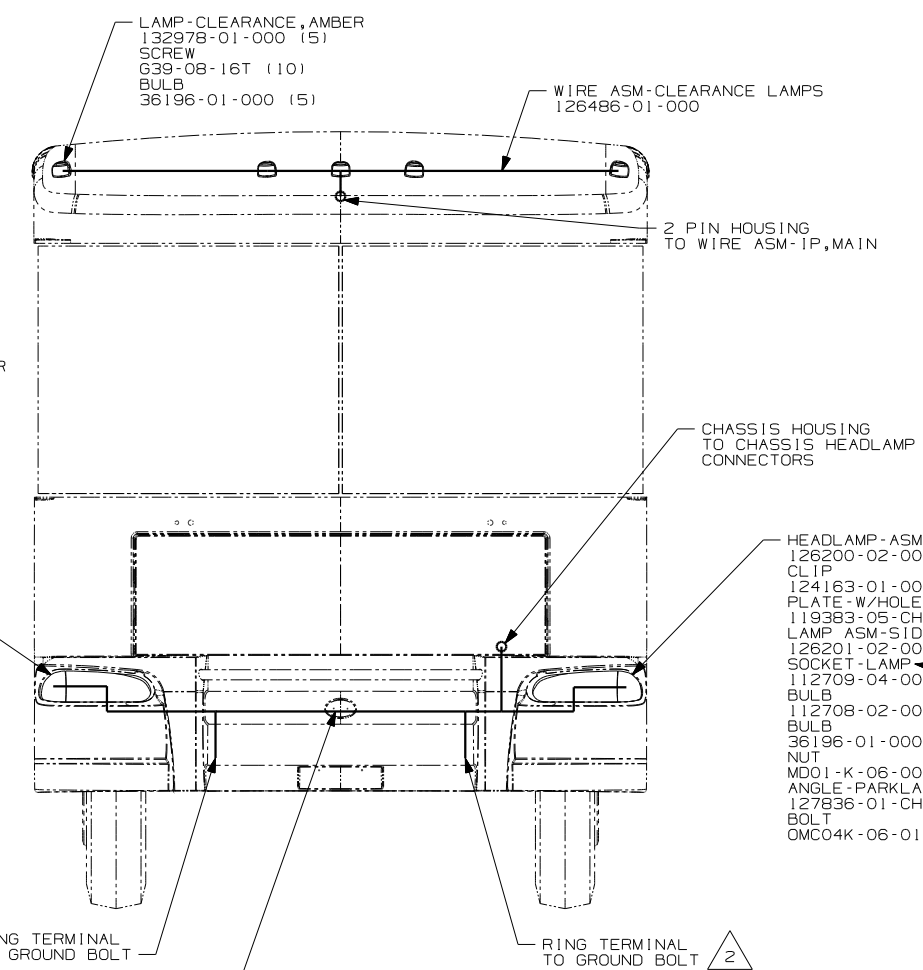
(X-X) FOR ELECTRICAL CALLOUTS SEE DWG NO. 121339-01-000



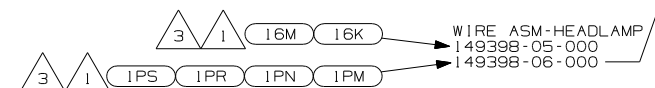
- HEADLAMP-ASM
148657-01-000
- LAMP ASM-SIDEMARKER, AMBER
148657-03-000
- BULB 112708-02-000
- SOCKET ASM-LAMP
148657-05-000
- SOCKET ASM-SIDEMARKER
151289-01-000
- BULB
36196-01-000
- RETAINER
148078-01-CHT
- 148078-02-CHT
- BOLT
C26-05-12U (2)



(WIN)



- HEADLAMP-ASM
126200-01-000
- CLIP
124163-01-00 (3)
- PLATE-W/HOLE
119383-05-CHT (2)
- LAMP ASM-SIDEMARKER, AMBER
126201-01-000
- SOCKET-LAMP
112709-04-000
- BULB
112708-02-000
- BULB
36196-01-000
- NUT
MD01-K-06-000 (4)
- ANGLE-PARKLAMP
127836-01-CHT
- BOLT
OMC04K-06-016



(ITA)

- (IPS) WORKHORSE 22,000#-22.5 TIRE
- (1PR) WORKHORSE 22,000#-19.5 TIRE
- (1PN) WORKHORSE 20,700#
- (1PM) WORKHORSE CHASSIS-18,000LB.
- (16M) FORD CHASSIS 20,500#/V10 ENG
- (16K) FORD CHASSIS 22,000
- (ITA) ITASCA ONLY
- (WIN) WINNEBAGO ONLY
- (265) CODES/STANDARDS-CSA/CMVSS
- (1B1) CODES/STANDARDS USA

- NOTES:
- 4 NOTE! SOCKET BODY ON THE 148657-05-000 IS LONGER THAN 112709-04-000, DO NOT MIX!
 - 3 SECURE WIRE ASM APPROX. EVERY 450 TO BATTERY CABLES AND BRACKETS. USE TIE-WIRE 8343-01-000 OR 93147-01-000 AS APPROPRIATE.
 - 2 CLEAN PAINT OFF METAL (BOLT) BEFORE CONNECTING GROUND TO INSURE CONTACT, ALSO MOUNT CHASSIS SUPPLIED HORN TO GROUND BOLT.
 - 1 GATHER ALL EXCESS WIRE AFTER MAKING ALL CONNECTIONS AND BUNDLE AND SECURE WITH TIE-WIRE 8343-01-000 OR 93147-01-000.

FOR ELECTRICAL TORQUE SPECIFICATIONS SEE DWG NO. 128783-01-000

FOR ELECTRICAL CALLOUTS SEE DWG NO. 121339-01-000

FIRST USED

06 F-SERIES

DO NOT SCALE DRAWING

TITLE: WIRING INSTL-EXTERIOR LAMPS

SHEET 2 PART NO 152104

LAMP-CLEARANCE, RED
102520-02-000 (5)
SCREW
G39-08-16T (10)
GASKET
102541-01-000 (5)
BULB
36196-01-000 (5)

WIRE ASM-TAILLAMPS
149622-03-000
149622-04-000
16K 16M 1 2
1PM 1PN 1PR 1PS 1 2

LIGHT-THIRD BRAKE,LED
151076-01-000 (2)
SCREW
G39-06-16T (4)

TAILLAMP ASM
148658-02-000
NUT-HEX
OMD06K-05-000 (3)
DETAIL DA

6 PIN HOUSING
TO RIGHT TAILLAMP

6 PIN HOUSING
TO RIGHT TAILLAMP

TAILLAMP ASM
148658-01-000
NUT-HEX
OMD06K-05-000 (3)
DETAIL DB

4 TO GROUND STUD
TP
(LOCATED ON BACKSIDE
OF GENERATOR OUTRIGGER)
NUT-GROUND
D39-05-00B

LAMP-LICENSE PLATE
87201-01-000
SCREW
G11-06-12U (EXT) (2)

TO CHASSIS SUPPLIED WIRE ASM

CONNECTOR-SOCKET, TRAILER
SCREW 3

- (240) TRAILER HITCH
- (IPS) WORKHORSE 22,000#-22.5 TIRE
- (1PR) WORKHORSE 22,000#-19.5 TIRE
- (1PN) WORKHORSE 20,700#
- (1PM) WORKHORSE CHASSIS-18,000LB.
- (16M) FORD CHASSIS 20,500#/V10 ENG
- (16K) FORD CHASSIS 22,000
- (ITA) ITASCA ONLY
- (WIN) WINNEBAGO ONLY
- (265) CODES/STANDARDS-CSA/CMVSS
- (1B1) CODES/STANDARDS USA

(1B1) (265) (WIN) (ITA)

4 CLEAN PAINT OFF METAL (BOLT) BEFORE CONNECTING
GROUND TO INSURE CONTACT.

3 CONNECTOR-PLUG, TRAILER 146246-01-000 TO
BE SUPPLIED LOOSE IN COACH WITH (240)

2 SECURE WIRE ASM APPROX. EVERY 450 TO BATTERY CABLES AND BRACKETS.
USE TIE-WIRE 8343-01-000 OR 93147-01-000 AS APPROPRIATE.

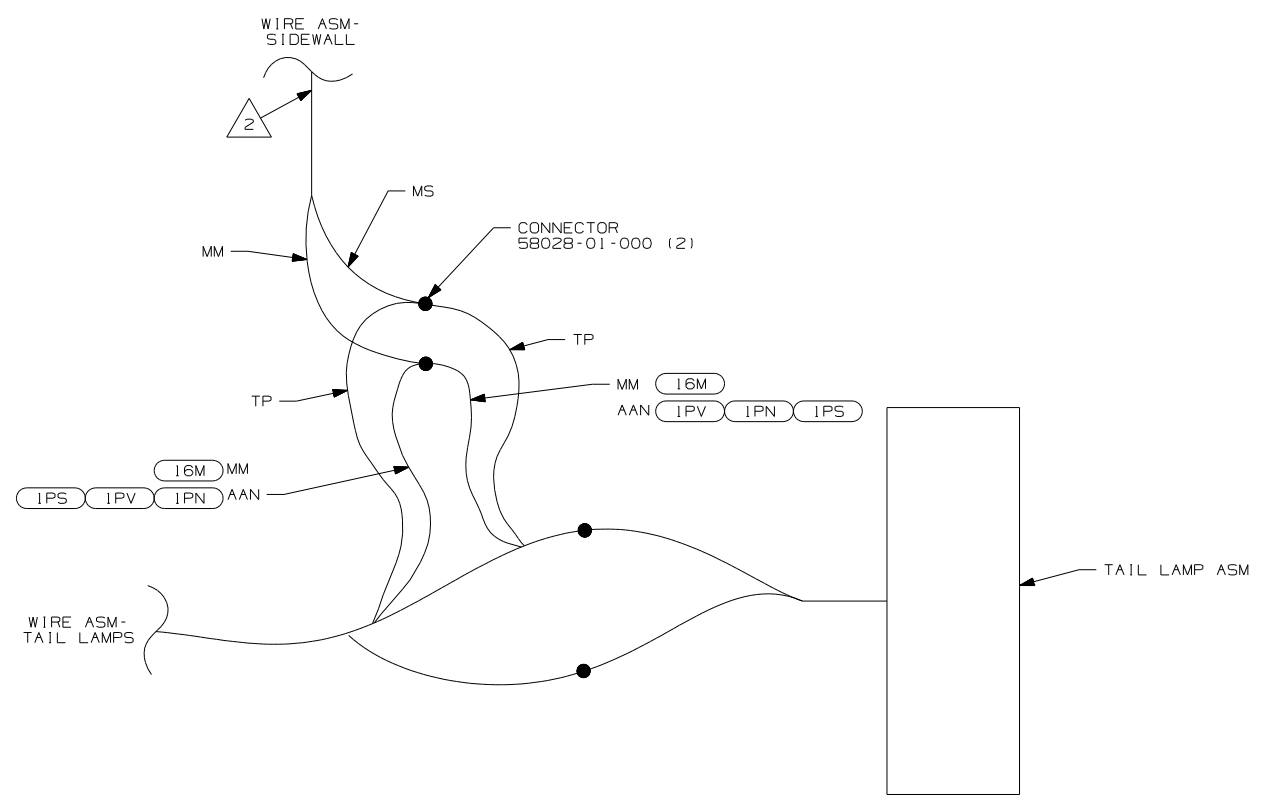
1 GATHER ALL EXCESS WIRE AFTER MAKING ALL CONNECTIONS AND BUNDLE
AND SECURE WITH TIE-WIRE 8343-01-000 OR 93147-01-000.

NOTES:

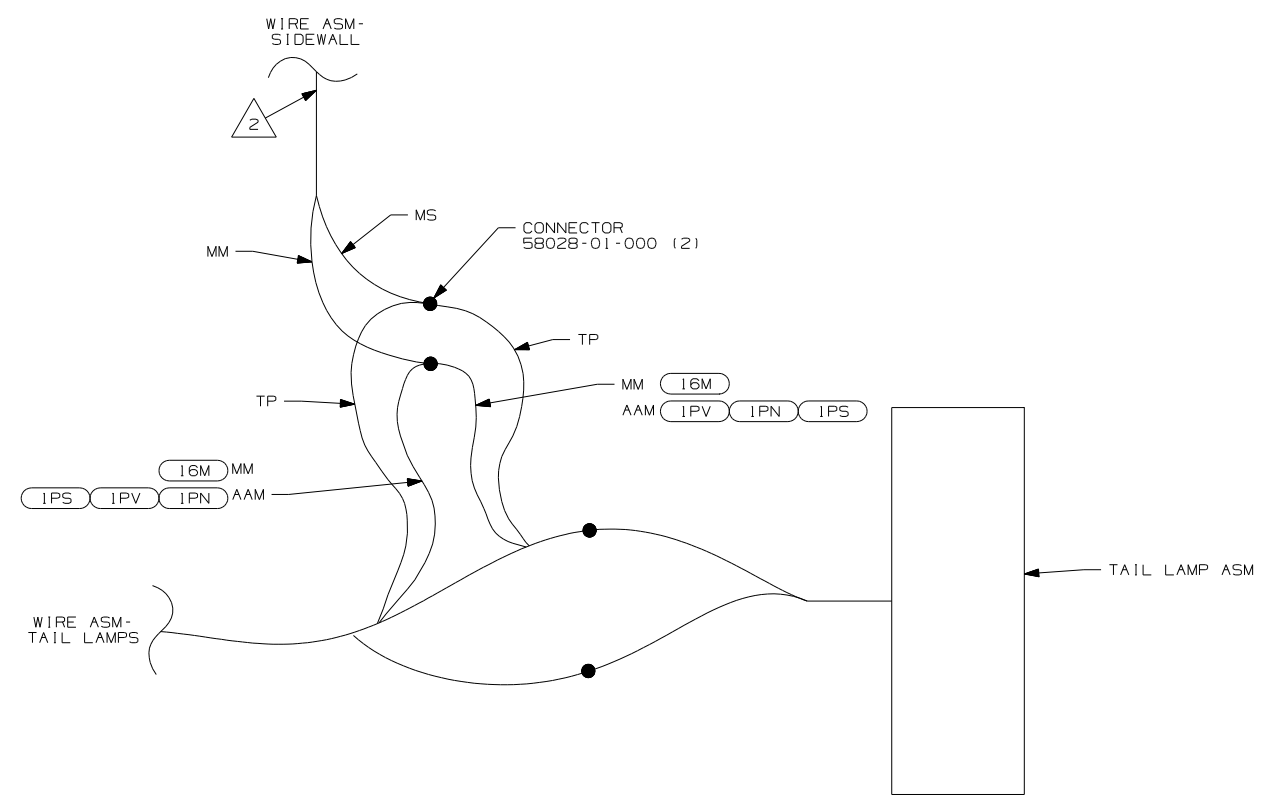
FOR ELECTRICAL
TORQUE
SPECIFICATIONS
SEE DWG NO.
128783-01-000

FOR ELECTRICAL
CALLOUTS
SEE DWG NO.
121339-01-000

FIRST USED	
06 F-SERIES	
DO NOT SCALE DRAWING	
TITLE:	
WIRING INSTL-EXTERIOR LAMPS	
SHEET 3	PART NO
	152104

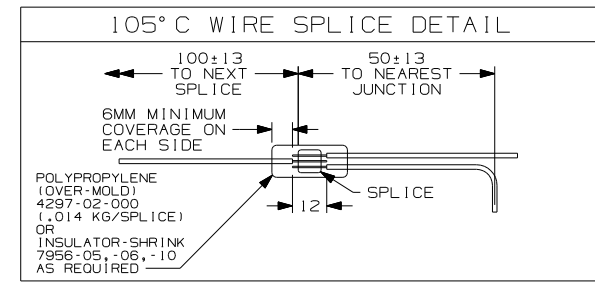


DETAIL DA
(SHELLS ONLY) 1



DETAIL DB
(SHELLS ONLY) 1

- 16M FORD CHASSIS 20,500#/V10 ENG
- 1PV WORKHORSE 24,000#-22.5 TIRE
- 1PS WORKHORSE 22,000#-22.5 TIRE
- 1PN WORKHORSE 20,700#
- 265 FEATURE NOTE
- 1B1 CODES/STANDARDS USA



2 ADD 300MM OF CONVULUTED TUBING 41953-07-000 TO WIRES EXITING SIDEWALL. PUSH TUBING INTO SIDEWALL TO PROTECT WIRES FROM ROUGH EDGES.

1 CUT AND RECONNECT AS SHOWN.

NOTES:

FIRST USED	1B1 265
06 F-SERIES	
DO NOT SCALE DRAWING	
TITLE: WIRING INSTL-EXTERIOR LAMPS	
SHEET 4	PART NO 152104