



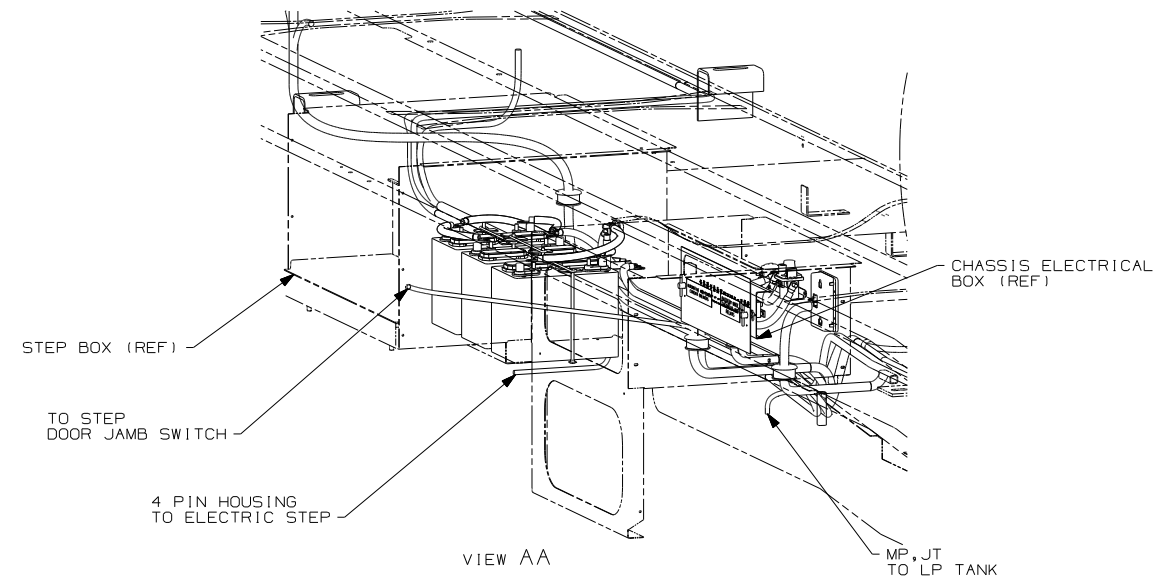
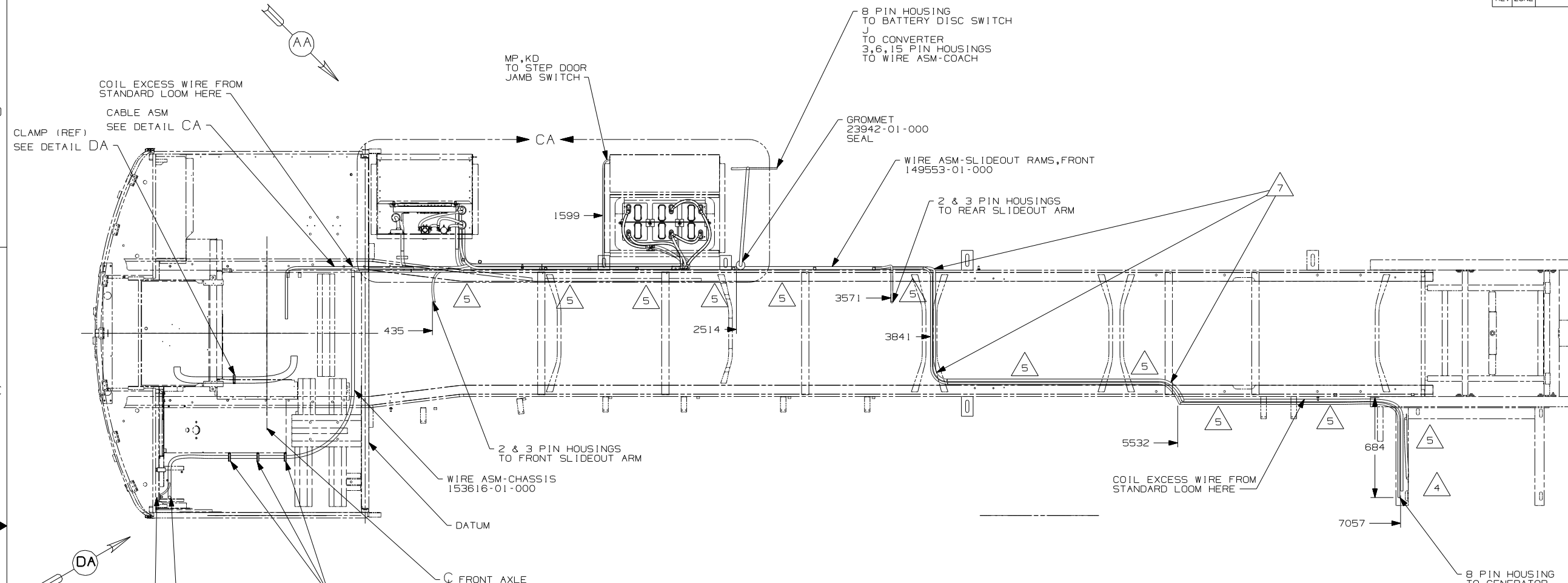
DANGER

Danger of electrical shock, burns or death. Always remove all power sources before attempting any repair, service or diagnostic work. Power can be present from shore power, generator, inverter or battery. All power sources must be disabled and secured before performing any service.



CAUTION

If you lack the skills, tools or equipment to perform diagnostic or repair work leave such work to an authorized Winnebago Industries dealer or other qualified shop.



- 7 COVER SHARP EDGES WHERE WIRE CROSSES FRAME RAIL.
 - 6 SEE WIRING INSTL-FRONT END FOR ADDITIONAL INFORMATION.
 - 5 CLAMP 83610-01-000, SCREW G11-10-16B.
 - 4 WIRE TIE 8343-04-000. FASTEN EVERY 600MM MINIMUM.
3. ALL DIMENSIONS ARE FROM DATUM UNLESS OTHERWISE SPECIFIED.
 2. SECURE CONDUIT 41953, TAB AS REQUIRED, OVER ALL WIRES IN CONTACT WITH SHARP EDGES.
 1. LEGEND: — WINNEBAGO: - - - - - CABLE: - - - - - CHASSIS SUPPLIED WIRING.
- NOTES:

265 CODES/STANDARDS-CSA/CMVSS
 1B1 CODES/STANDARDS USA
 1PM WORKHORSE CHASSIS-18,000LB.
 1PM 1B1 265

WINNEBAGO COPYRIGHT 2004 WINNEBAGO INDUSTRIES, INC.

DFTR	ORIG. DATE
CHKR	ALL DIMENSIONS ARE IN MILLIMETERS
P.E.	
M.E.	FIRST USED
DSNR	06 D33T

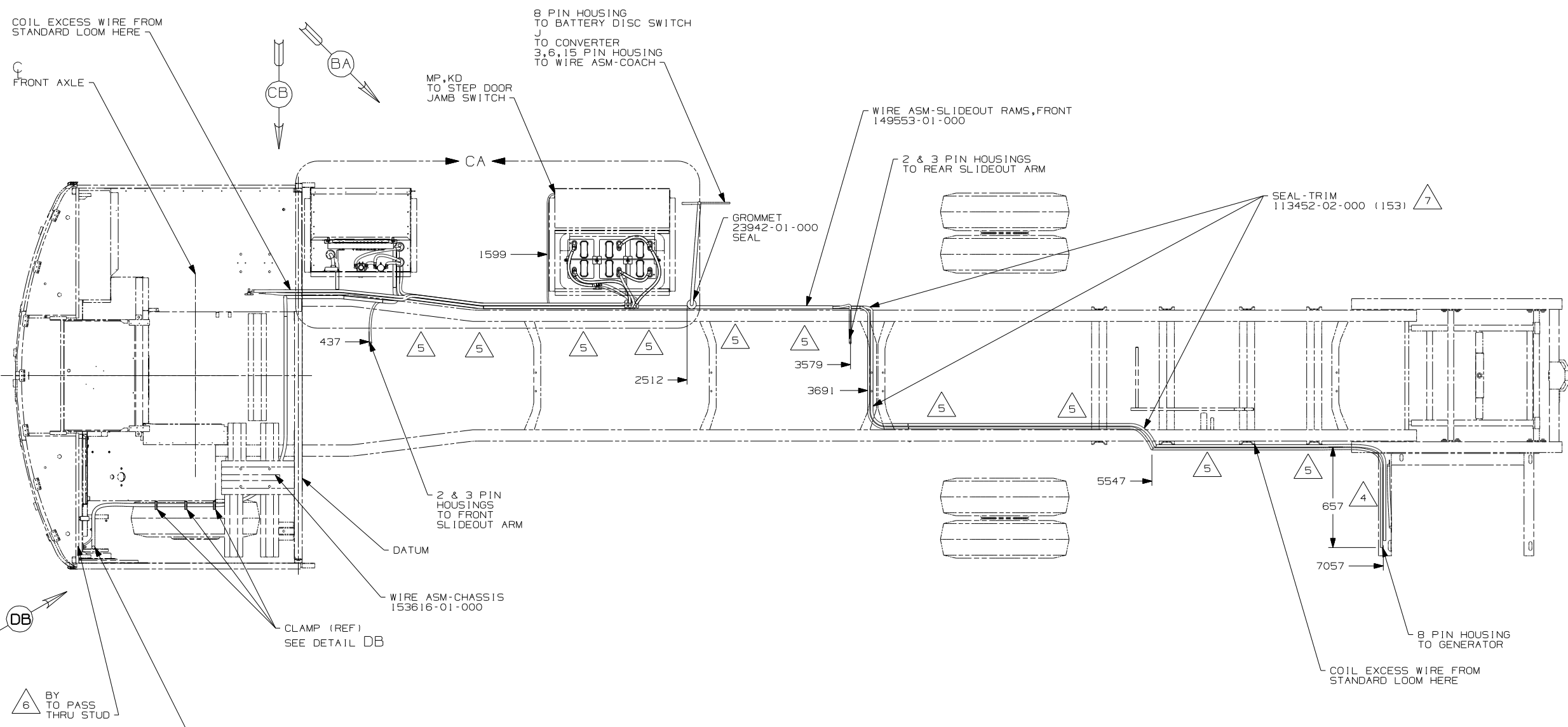
UNSPECIFIED TOLERANCES ARE:	MATERIAL:
HOLE DIM (X)	:
ONE-PLACE (X.X)	:
TWO-PLACE (X.XX)	:
ANGLE	:
THIRD ANGLE PROJECTION	⊕

DO NOT SCALE DRAWING

TITLE: WIRING INSTL-CHASSIS

SHEET 1 OF 4 PART NO 155740

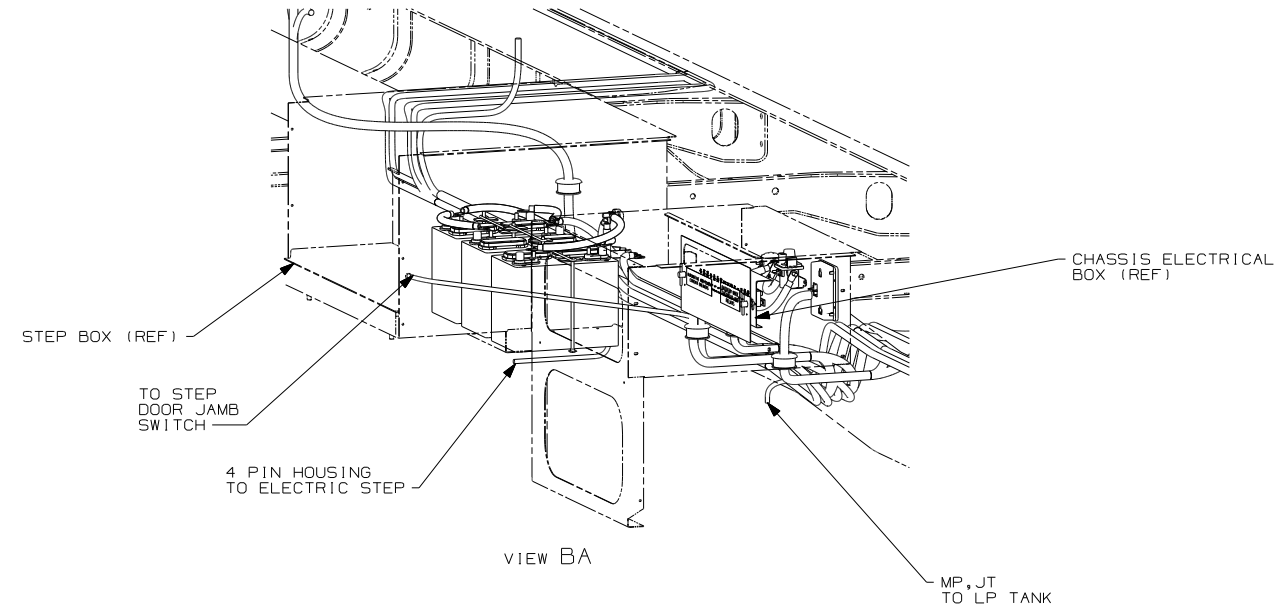
REF: 1 11/14/2005



- 7 COVER SHARP EDGES WHERE WIRE CROSSES FRAME RAILS.
 - 6 SEE WIRING INSTL-FRONT END FOR ADDITIONAL INFORMATION.
 - 5 CLAMP 83610-01-000, SCREW G11-10-16B.
 - 4 WIRE TIE 8343-04-000. FASTEN EVERY 600MM MINIMUM.
3. ALL DIMENSIONS ARE FROM DATUM UNLESS OTHERWISE SPECIFIED.
2. SECURE CONDUIT 41953, TAB AS REQUIRED, OVER ALL WIRES IN CONTACT WITH SHARP EDGES.

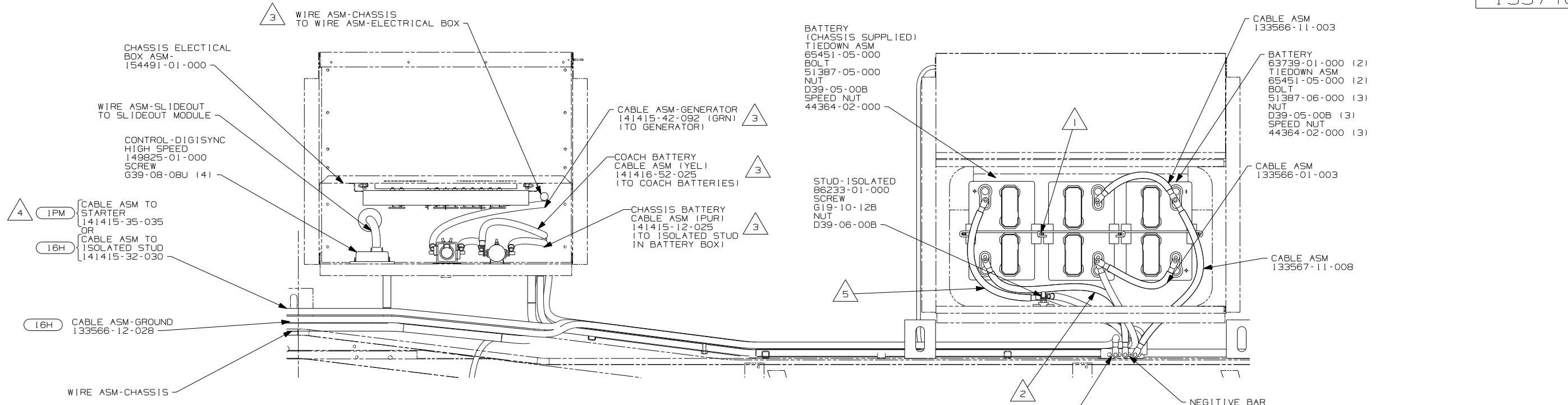
1. LEGEND: — WINNEBAGO: - - - - - CABLE: - - - - - CHASSIS SUPPLIED WIRING.

NOTES:

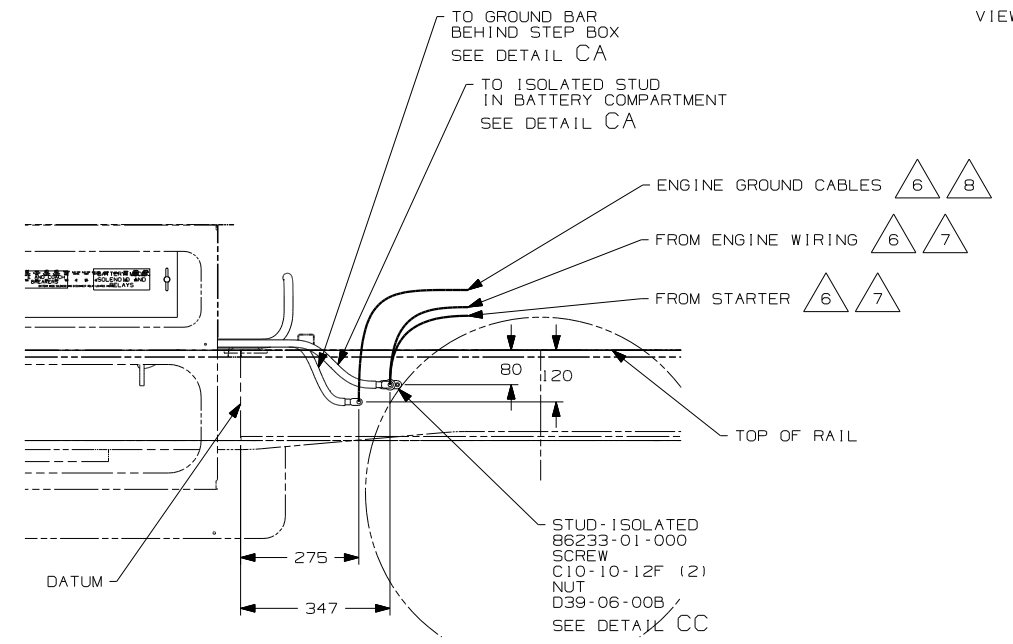


- 265 CODES/STANDARDS-CSA/CMVSS
- 1B1 CODES/STANDARDS USA
- 16H FORD CHASSIS 18,000#/V10 ENG

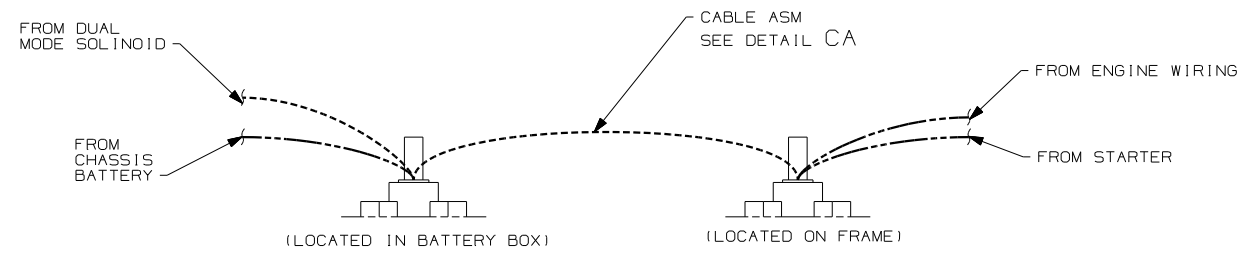
FIRST USED	
06 D33T	
DO NOT SCALE DRAWING	
TITLE:	
WIRING INSTL-CHASSIS	
SHEET 2	PART NO
	155740



VIEW CA



VIEW CB (16H)

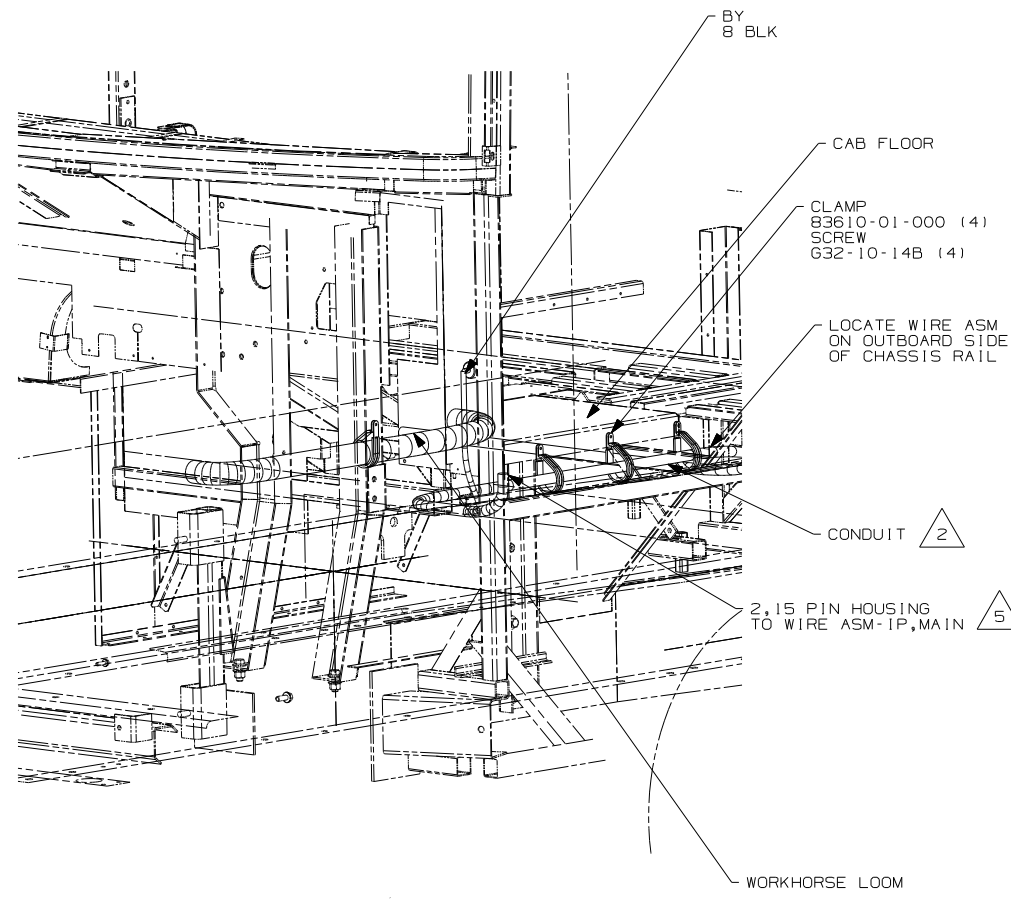


DETAIL CC (16H)

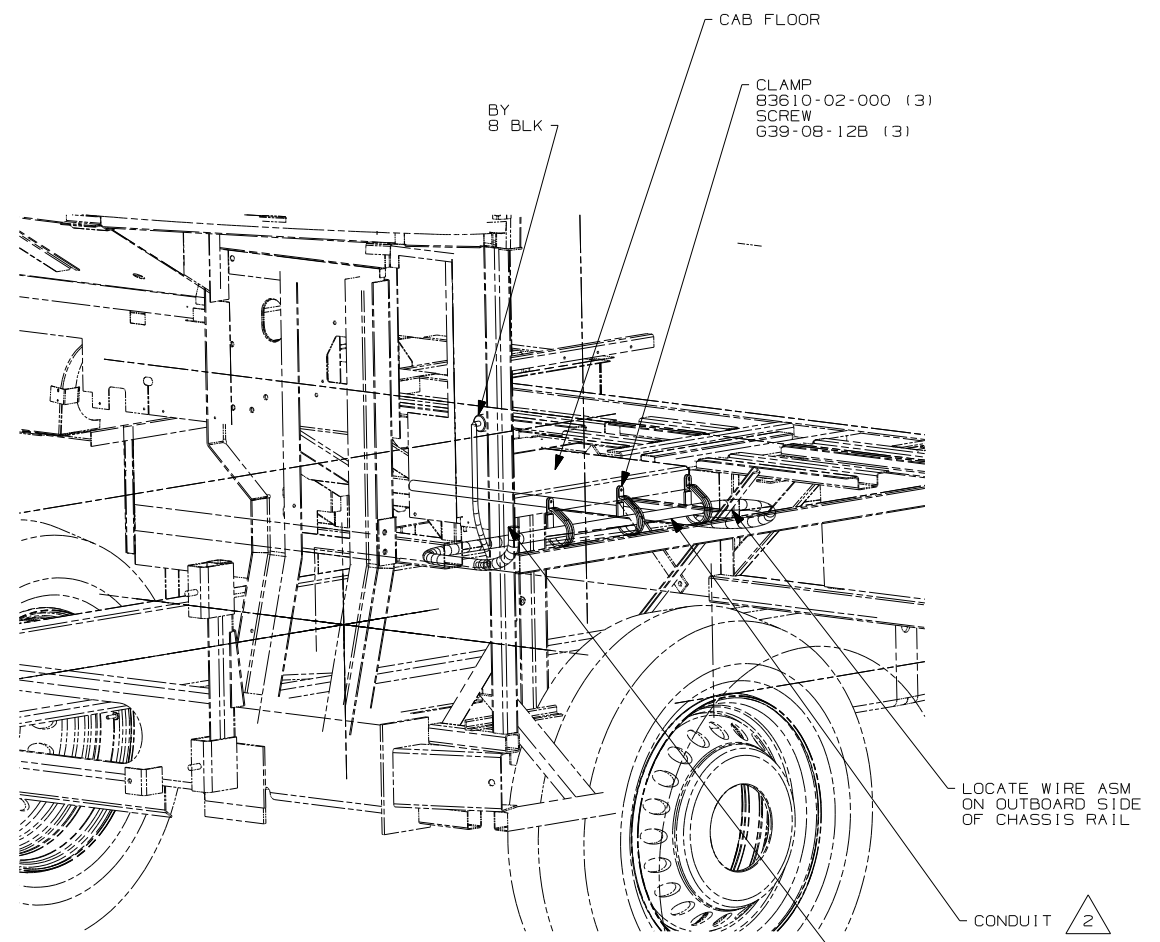
- NOTES:
- 5 SUPPLIED WITH CHASSIS. CUT TO LENGTH AND ADD TERMINALS 68070-01-000 (2)
 - 4 BATTERY CABLES MUST BE INSTALLED TO STARTER MOTOR BEFORE ENGINE WIRING HARNESS AND ROUTED IN SUCH A MANNER AS TO PREVENT ANY POSSIBLE DEGRADATION FROM THE EXHAUST SYSTEM.
 - 3 SEE CHASSIS ELECTRICAL BOX FOR ADDITIONAL INFORMATION.
 - 2 TRIM CABLE TO 500MM, ADD TERMINALS 8348-01-000 (2),
 - 1 USE TWO NUTS HERE TO ACCOUNT FOR BATTERY HEIGHT DIFFERENCE.
 - 8 CUT GROUND CABLES, ADD TERMINAL 8348-01-000 AND CONNECT TO ISOLATED STUD AS SHOWN IN DETAIL.
 - 7 CUT STARTER CABLE AND ENGINE WIRING, ADD TERMINAL 68040-01-000 AND CONNECT TO ISOLATED STUD AS SHOWN IN DETAIL.
 - 6 SUPPLIED WITH CHASSIS.

- (16H) FORD CHASSIS 18,000#/V10 ENG
- (1PM) WORKHORSE CHASSIS-18,000LB.
- (265) CODES/STANDARDS-CSA/CMVSS
- (1B1) CODES/STANDARDS USA

FIRST USED	06 D33T
TITLE	DO NOT SCALE DRAWING
	WIRING INSTL-CHASSIS
SHEET 3	PART NO 155740



VIEW DA-DA (IPM) 3



VIEW DB-DB (16H)

- NOTES:
- 5 ROUTE WIRE THRU HOLE IN CAB FLOOR.
 - 4. CONNECT CABLES TO COACH SIDE OF BATTERY DISCONNECT WHEN BATTERY DISCONNECT IS USED.
 - 3 ALL GROUND WIRE TO BE COVERED WITH TUBING 8041-02-000.
 - 2 NOTECOVER WITH CONDUIT 41953-10-000 AND 41953-11-000 AS REQUIRED.
 - 1. CUT OFF EXCESS END OF WIRE TIE.

- 16H FORD CHASSIS 18,000#/V10 ENG
- IPM WORKHORSE CHASSIS-18,000LB.
- 265 CODES/STANDARDS-CSA/CMVSS
- 1B1 CODES/STANDARDS USA

FIRST USED	
06 D33T	
DO NOT SCALE DRAWING	
TITLE:	
WIRING INSTL-CHASSIS	
SHEET 4	PART NO
	155740