



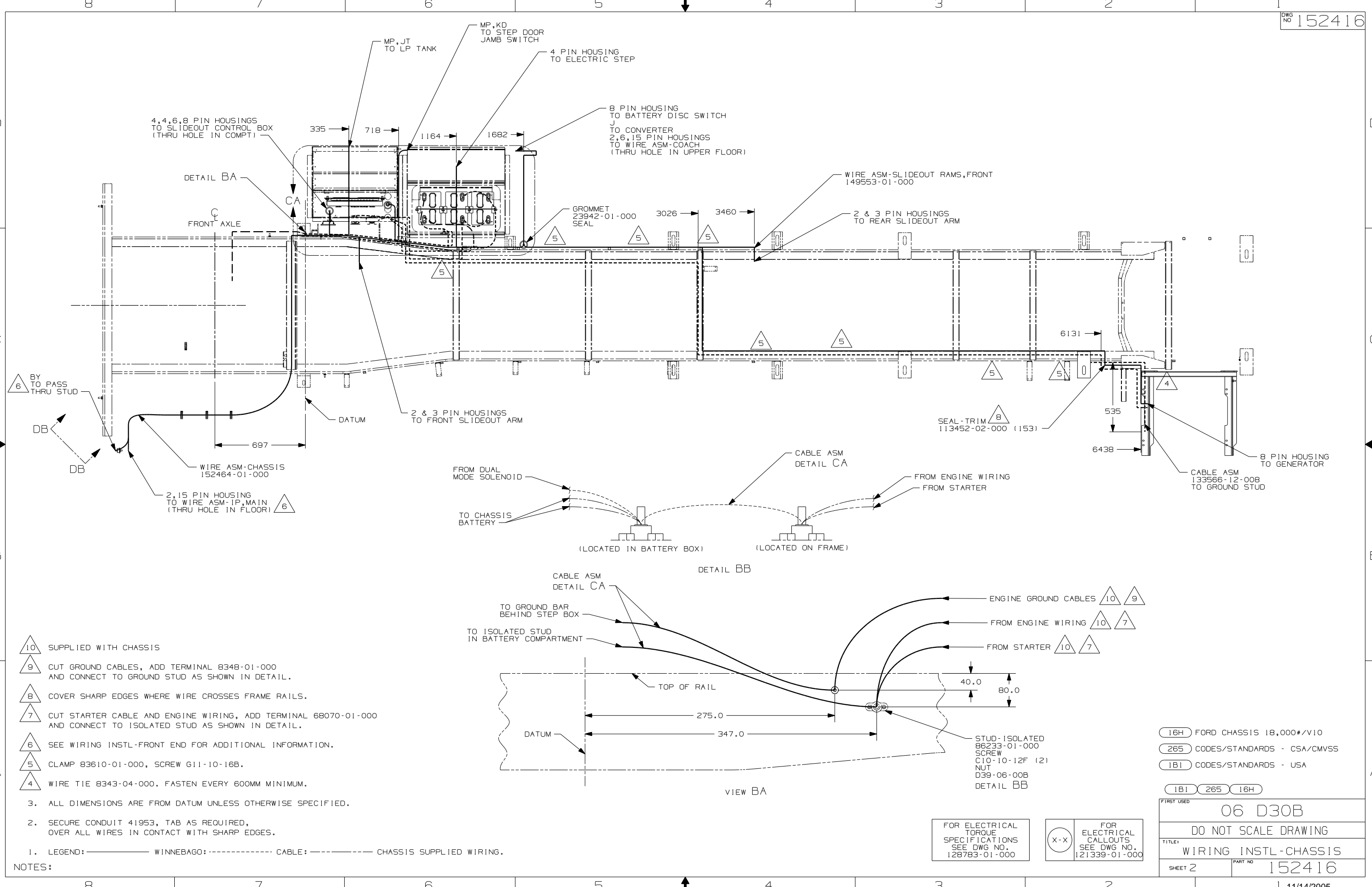
DANGER

Danger of electrical shock, burns or death. Always remove all power sources before attempting any repair, service or diagnostic work. Power can be present from shore power, generator, inverter or battery. All power sources must be disabled and secured before performing any service.



CAUTION

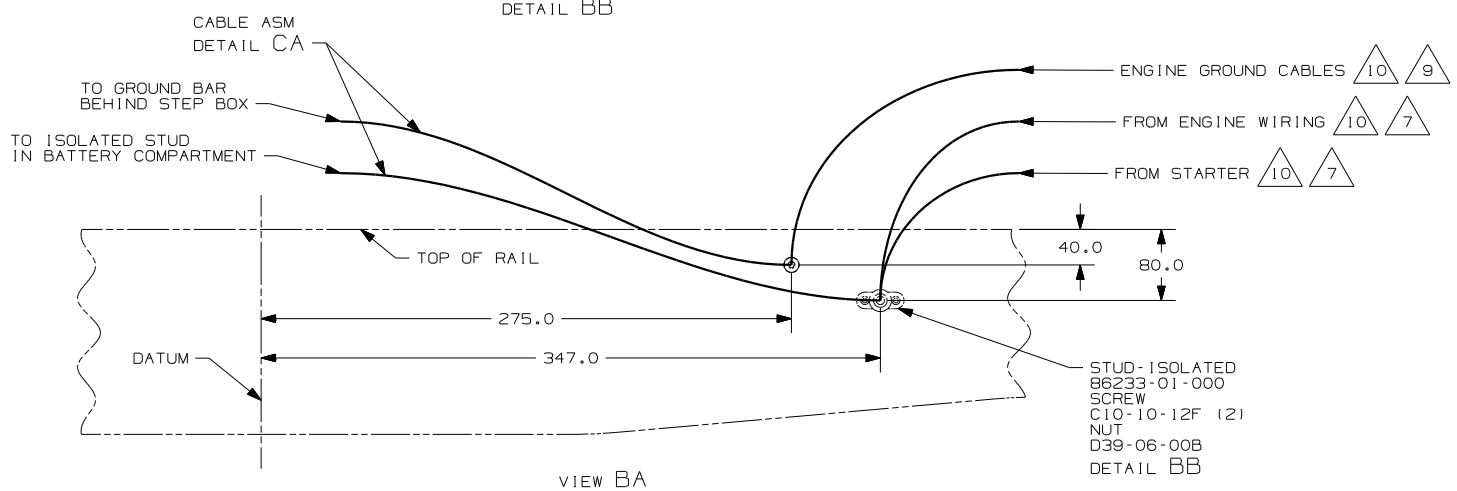
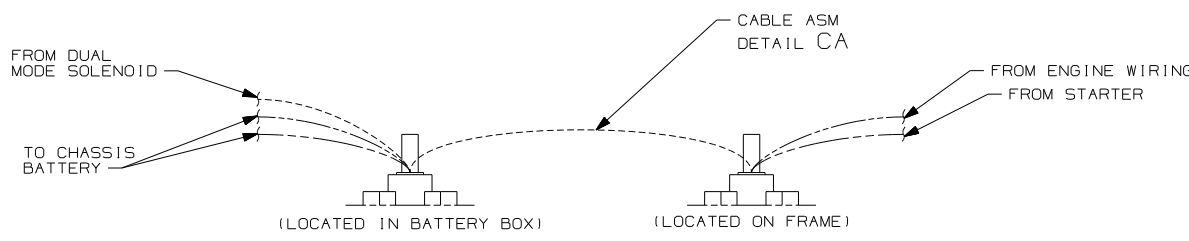
If you lack the skills, tools or equipment to perform diagnostic or repair work leave such work to an authorized Winnebago Industries dealer or other qualified shop.



- 10 SUPPLIED WITH CHASSIS
- 9 CUT GROUND CABLES, ADD TERMINAL 8348-01-000 AND CONNECT TO GROUND STUD AS SHOWN IN DETAIL.
- 8 COVER SHARP EDGES WHERE WIRE CROSSES FRAME RAILS.
- 7 CUT STARTER CABLE AND ENGINE WIRING, ADD TERMINAL 68070-01-000 AND CONNECT TO ISOLATED STUD AS SHOWN IN DETAIL.
- 6 SEE WIRING INSTL-FRONT END FOR ADDITIONAL INFORMATION.
- 5 CLAMP 83610-01-000, SCREW G11-10-16B.
- 4 WIRE TIE 8343-04-000. FASTEN EVERY 600MM MINIMUM.

- 3. ALL DIMENSIONS ARE FROM DATUM UNLESS OTHERWISE SPECIFIED.
- 2. SECURE CONDUIT 41953, TAB AS REQUIRED, OVER ALL WIRES IN CONTACT WITH SHARP EDGES.
- 1. LEGEND: — WINNEBAGO: - - - - - CABLE: - - - - - CHASSIS SUPPLIED WIRING.

NOTES:



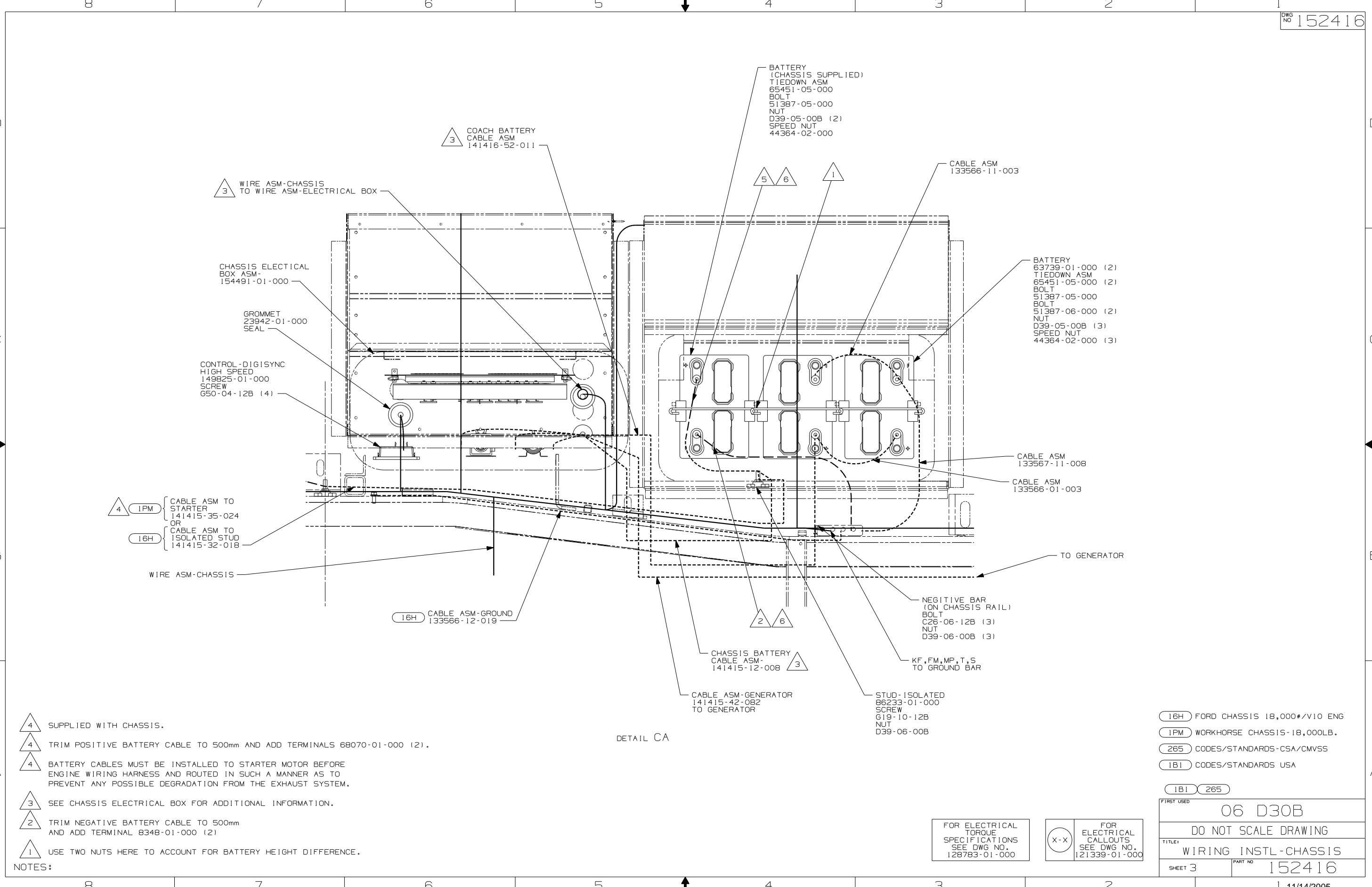
VIEW BA

FOR ELECTRICAL
TORQUE
SPECIFICATIONS
SEE DWG NO.
128783-01-000

FOR
ELECTRICAL
CALLOUTS
SEE DWG NO.
121339-01-000

- 16H FORD CHASSIS 18,000#/V10
- 265 CODES/STANDARDS - CSA/CMVSS
- 1B1 CODES/STANDARDS - USA

FIRST USED	06 D30B
TITLE	DO NOT SCALE DRAWING
TITLE	WIRING INSTL-CHASSIS
SHEET 2	PART NO 152416



3 WIRE ASM-CHASSIS TO WIRE ASM-ELECTRICAL BOX

CHASSIS ELECTRICAL BOX ASM-154491-01-000

GROMMET 23942-01-000 SEAL

CONTROL-DIGISYNC HIGH SPEED 149825-01-000 SCREW G50-04-12B (4)

4 1PM CABLE ASM TO STARTER 141415-35-024 OR 16H CABLE ASM TO ISOLATED STUD 141415-32-018

WIRE ASM-CHASSIS

16H CABLE ASM-GROUND 133566-12-019

3 COACH BATTERY CABLE ASM 141416-52-011

BATTERY (CHASSIS SUPPLIED) TIEDOWN ASM 65451-05-000 BOLT 51387-05-000 NUT D39-05-00B (2) SPEED NUT 44364-02-000

5 6

1

CABLE ASM 133566-11-003

BATTERY 63739-01-000 (2) TIEDOWN ASM 65451-05-000 (2) BOLT 51387-05-000 BOLT 51387-06-000 (2) NUT D39-05-00B (3) SPEED NUT 44364-02-000 (3)

CABLE ASM 133567-11-008

CABLE ASM 133566-01-003

TO GENERATOR

NEGITIVE BAR (ON CHASSIS RAIL) BOLT C26-06-12B (3) NUT D39-06-00B (3)

KF,FM,MP,T,S TO GROUND BAR

CHASSIS BATTERY CABLE ASM-141415-12-008 3

CABLE ASM-GENERATOR 141415-42-082 TO GENERATOR

STUD-ISOLATED 86233-01-000 SCREW G19-10-12B NUT D39-06-00B

DETAIL CA

- 4 SUPPLIED WITH CHASSIS.
- 4 TRIM POSITIVE BATTERY CABLE TO 500mm AND ADD TERMINALS 68070-01-000 (2).
- 4 BATTERY CABLES MUST BE INSTALLED TO STARTER MOTOR BEFORE ENGINE WIRING HARNESS AND ROUTED IN SUCH A MANNER AS TO PREVENT ANY POSSIBLE DEGRADATION FROM THE EXHAUST SYSTEM.
- 3 SEE CHASSIS ELECTRICAL BOX FOR ADDITIONAL INFORMATION.
- 2 TRIM NEGATIVE BATTERY CABLE TO 500mm AND ADD TERMINAL 8348-01-000 (2)
- 1 USE TWO NUTS HERE TO ACCOUNT FOR BATTERY HEIGHT DIFFERENCE.

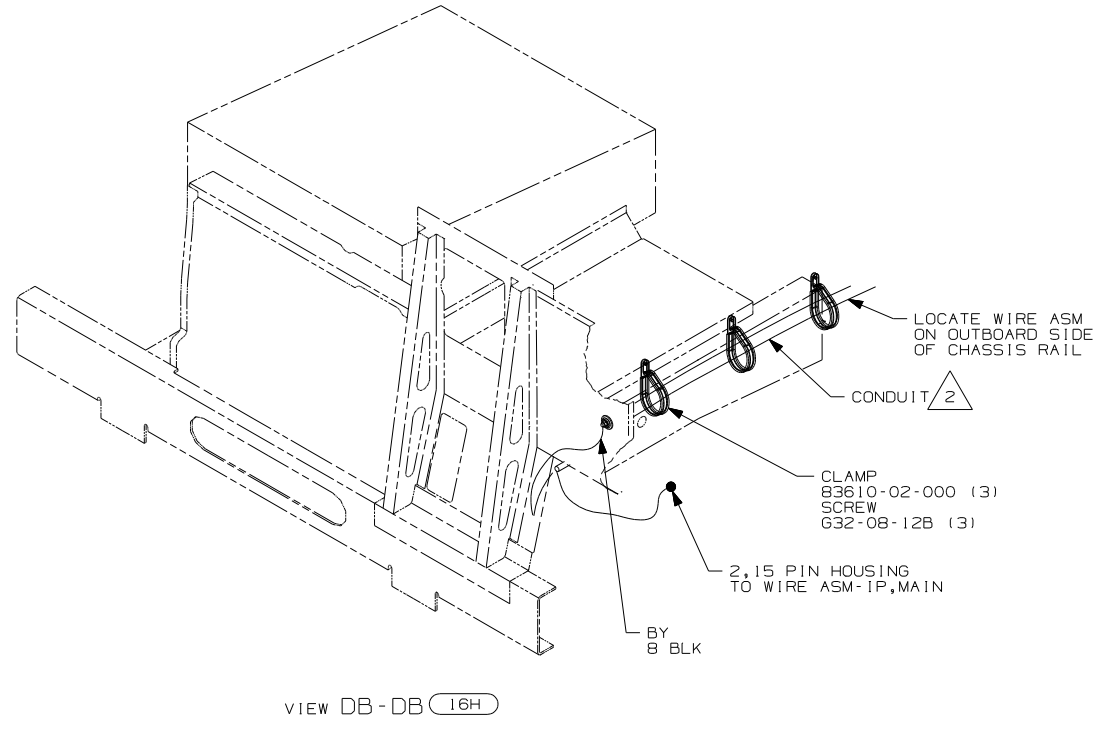
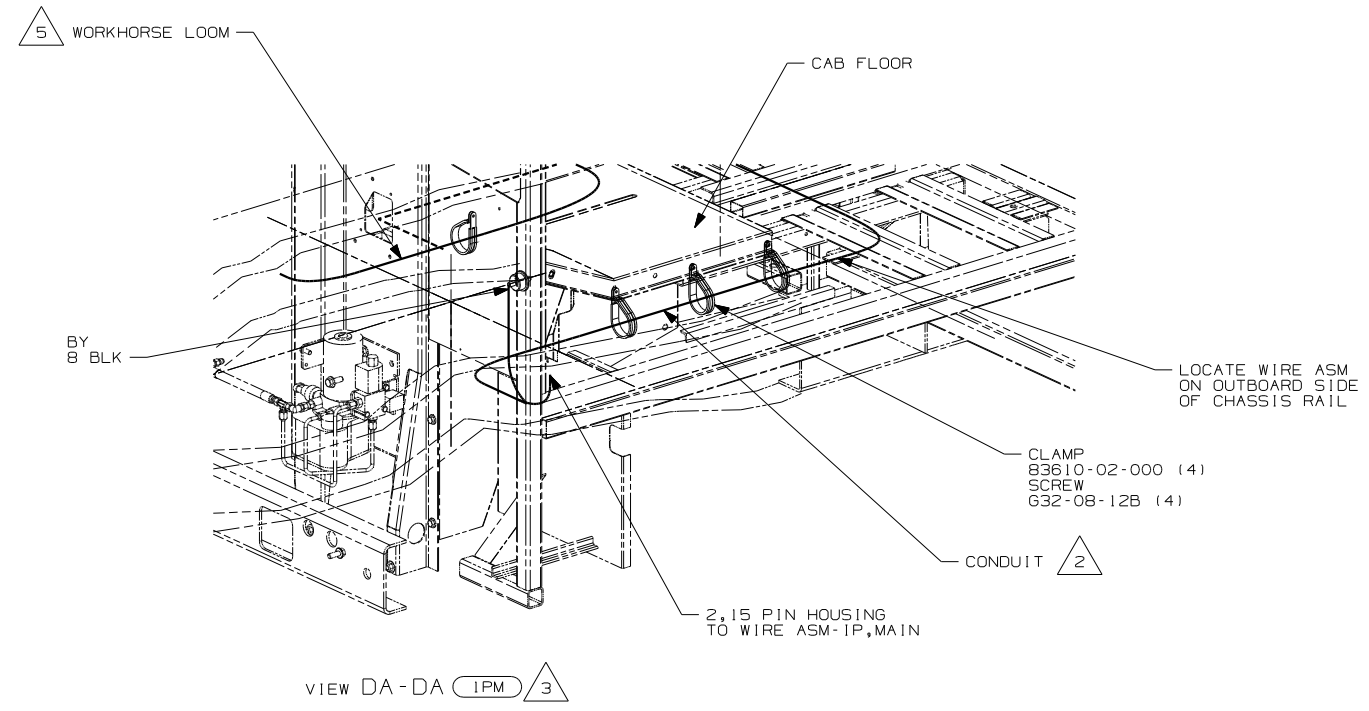
NOTES:

- 16H FORD CHASSIS 18,000#/V10 ENG
- 1PM WORKHORSE CHASSIS-18,000LB.
- 265 CODES/STANDARDS-CSA/CMVSS
- 1B1 CODES/STANDARDS USA

FIRST USED	06 D30B
TITLE	DO NOT SCALE DRAWING
TITLE	WIRING INSTL-CHASSIS
SHEET 3	PART NO 152416

FOR ELECTRICAL TORQUE SPECIFICATIONS SEE DWG NO. 128783-01-000

FOR ELECTRICAL CALLOUTS SEE DWG NO. 121339-01-000



- NOTES:
- 5 CLAMP WORKHORSE ENGINE HARNESS TO CAB DECK TO PROTECT HARNESS FROM DAMAGE.
 - 4. CONNECT CABLES TO COACH SIDE OF BATTERY DISCONNECT WHEN BATTERY DISCONNECT IS USED.
 - 3 ALL GROUND WIRE TO BE COVERED WITH TUBING 8041-02-000.
 - 2 COVER WITH CONDUIT 41953-10-000 AND 41953-11-000 AS REQUIRED.
 - 1. CUT OFF EXCESS END OF WIRE TIE.

- (IPM) WORKHORSE CHASSIS-18,000LB
- (16H) FORD CHASSIS 18,000#V10 ENG
- (265) CODES/STANDARDS-CSA/CMVSS
- (1B1) CODES/STANDARDS USA

FIRST USED	06 D30B
TITLE	DO NOT SCALE DRAWING
	WIRING INSTL-CHASSIS
SHEET 4	PART NO 152416

FOR ELECTRICAL TORQUE SPECIFICATIONS SEE DWG NO. 128783-01-000

(X-X) FOR ELECTRICAL CALLOUTS SEE DWG NO. 121339-01-000