



**DANGER**

**Danger of electrical shock, burns or death.** Always remove all power sources before attempting any repair, service or diagnostic work. Power can be present from shore power, generator, inverter or battery. All power sources must be disabled and secured before performing any service.

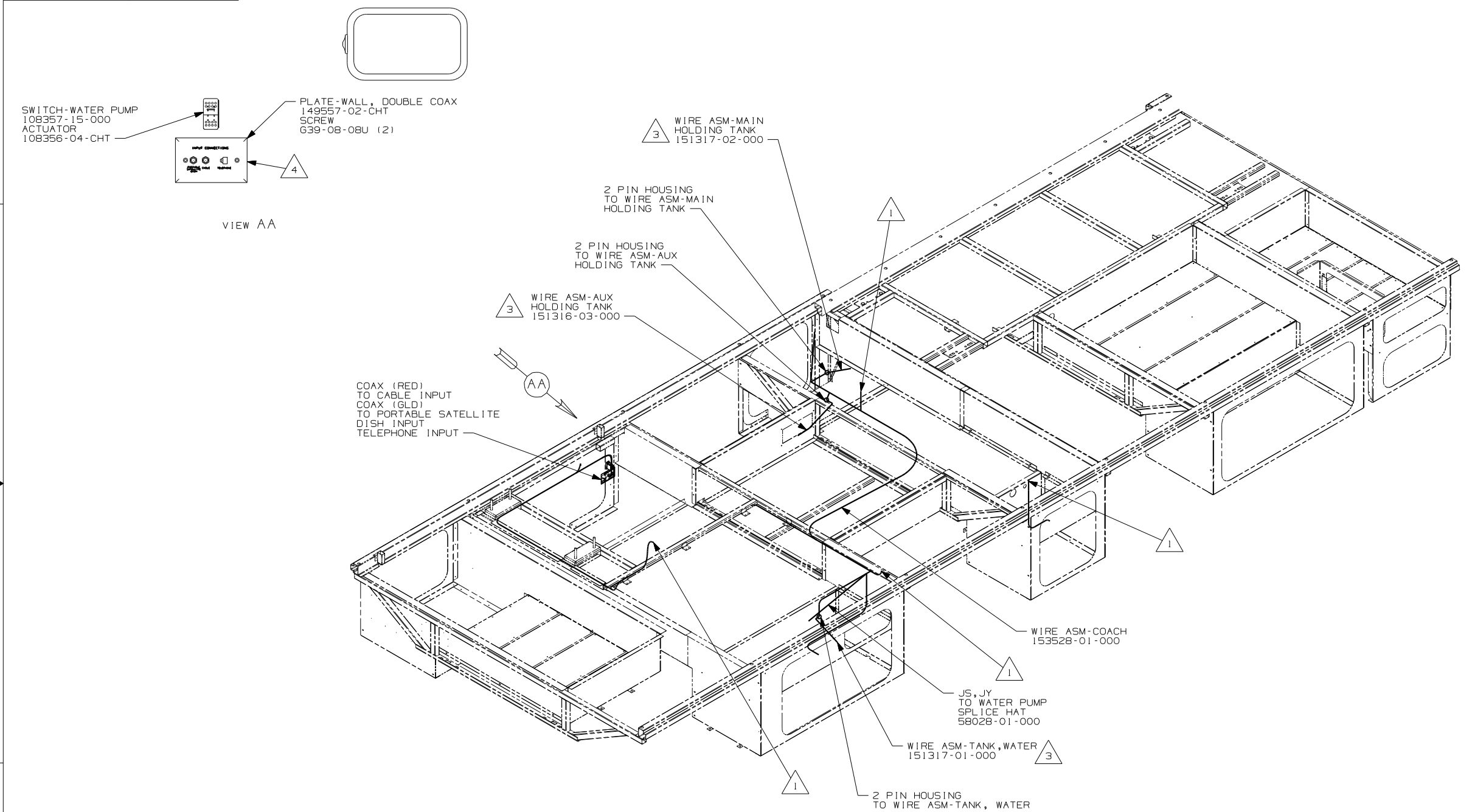


**CAUTION**

If you lack the skills, tools or equipment to perform diagnostic or repair work leave such work to an authorized Winnebago Industries dealer or other qualified shop.

DRAWING NO.	FEATURE
153513-01	WIN
153513-02	ITA


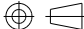
RELEASE	REV DATE	1	DWG NO	153513
REV ZONE	REVISION RECORD		DATE	DFTR-ORIG



- 4 CONNECT TELEPHONE WIRE TO MATCHING COLORS ON PLATE-WALL, PHONE/DUAL COAX.
- 3 PLACE CROSS LOCATOR ON SENSORS OVER DIMPLES ON TANK.
2. ALL WIRES TO BE SECURED WITH CLAMP 10495 OR 10497 OR WIRE TIE 8343 OR 108046 EVERY 600MM, USE SCREW G67-XX-XXX OR G56-XX-XXX AS APPROPRIATE FOR INSTALLATION.
- 1 WIRE ASM-COACH PASSES THROUGH FLOOR IN THIS AREA.

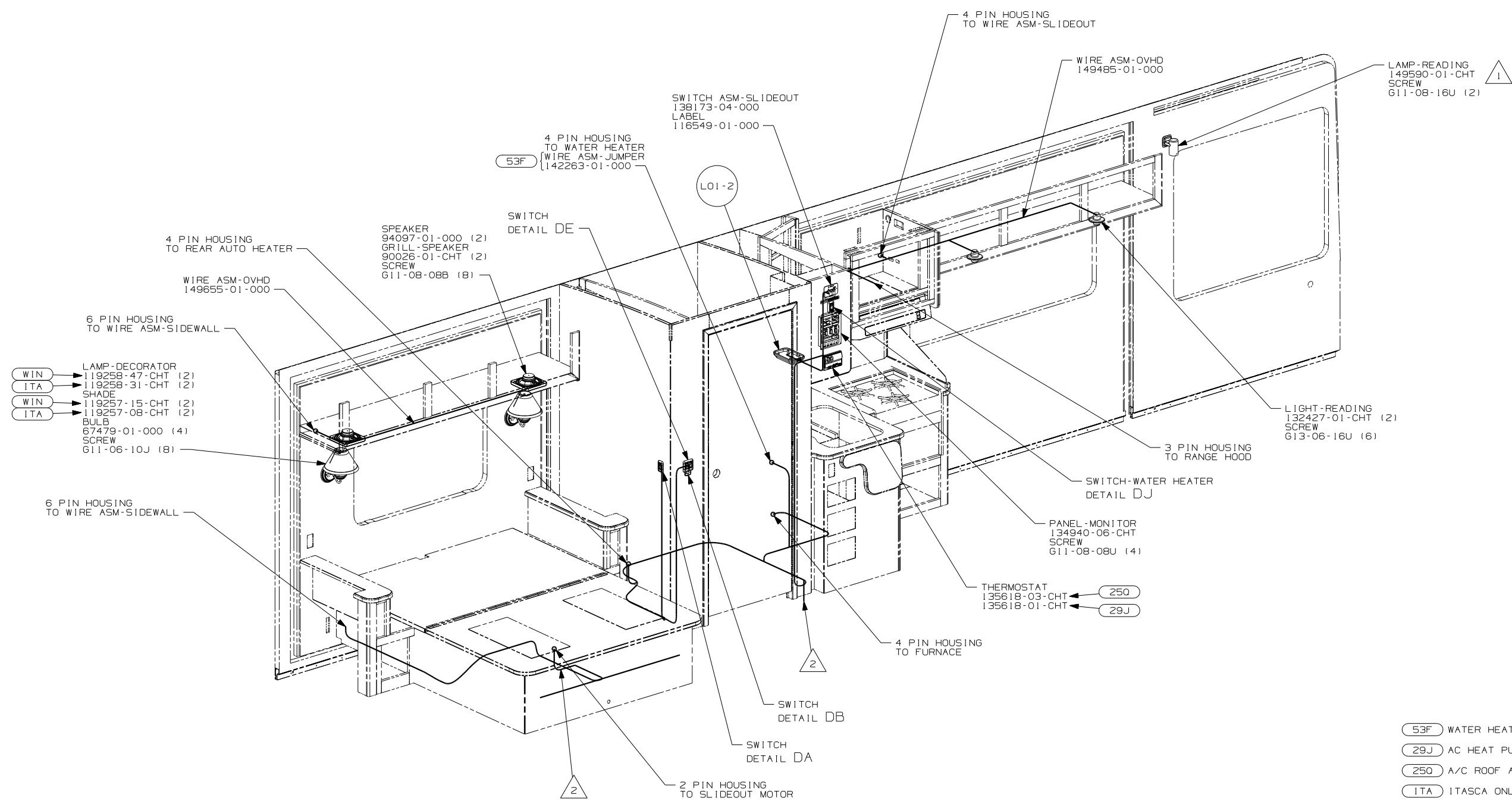
NOTES:

- ITA ITASCA ONLY
- WIN WINNEBAGO ONLY
- 265 CODES/STANDARDS-CSA/CMVSS
- 1B1 CODES/STANDARDS USA
- 1B1 265

		COPYRIGHT 2004 WINNEBAGO INDUSTRIES, INC.	
DFTN		ORIG. DATE	
CHKR		ALL DIMENSIONS ARE IN MILLIMETERS	
P.E.			
M.E.		FIRST USED	
DSNR		06 D29R	
UNSPECIFIED TOLERANCES ARE:		MATERIAL:	
HOLE DIM (X) ±			
ONE-PLACE (X,X) ±			
TWO-PLACE (X,XX) ±			
ANGLE ±			
THIRD ANGLE PROJECTION			
DO NOT SCALE DRAWING			
TITLE: WIRING INSTL-BODY, 12V			
SHEET 1 OF 6		PART NO 153513	
REF :		1 10/17/2005	

FOR ELECTRICAL  
TORQUE  
SPECIFICATIONS  
SEE DWG NO.  
128783-01-000

FOR  
ELECTRICAL  
CALLOUTS  
SEE DWG NO.  
121339-01-000



- |     |                             |
|-----|-----------------------------|
| 53F | WATER HEATER-ELEC. IGNITION |
| 29J | AC HEAT PUMP-1              |
| 25Q | A/C ROOF AIR (1) 14,800 BTU |
| ITA | ITASCA ONLY                 |
| WIN | WINNEBAGO ONLY              |
| 265 | CODES/STANDARDS-CSA/CMVSS   |
| IBI | CODES/STANDARDS USA         |

- |                          |  |         |  |
|--------------------------|--|---------|--|
| 1B1                      |  | 265     |  |
| FIRST USED               |  |         |  |
| 06 D29R                  |  |         |  |
| DO NOT SCALE DRAWING     |  |         |  |
| TITLE:                   |  |         |  |
| WIRING INSTL - BODY, 12V |  |         |  |
| SHEET 2                  |  | PART NO |  |
|                          |  | 153513  |  |

3. ALL WIRES TO BE SECURED WITH CLAMP 10495 OR 10497 OR WIRE TIE 8343 OR 108046 EVERY 600MM, USE SCREW G67-XX-XXX OR G56-XX-XXX AS APPROPRIATE FOR INSTALLATION.

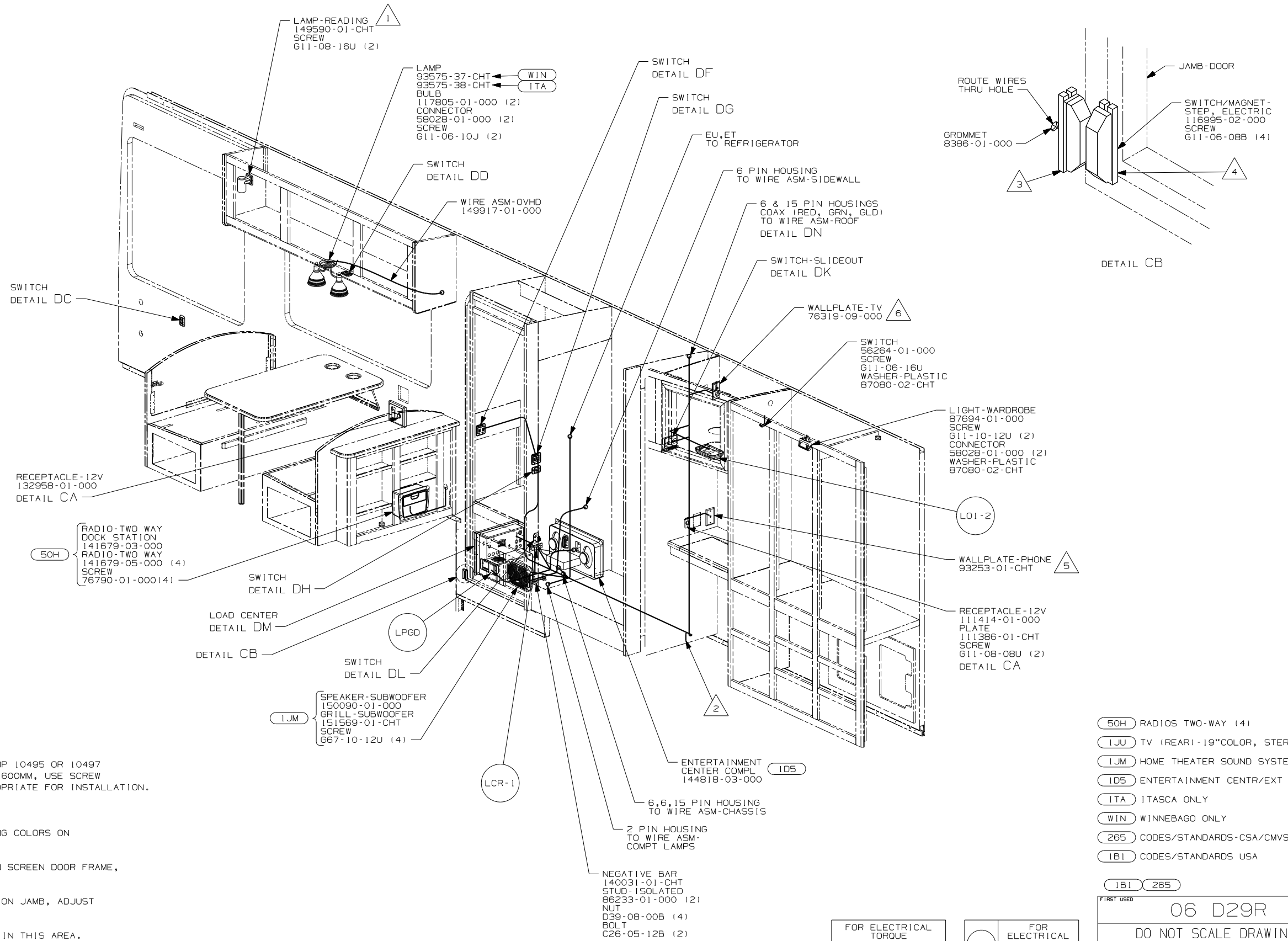
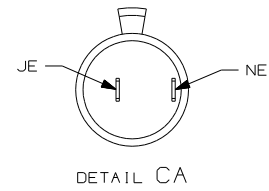
2 WIRE ASM-COACH PASSES THRU FLOOR IN THIS AREA.

1 SEE WIRING INSTL-FRONT END FOR WIRING INFORMATION.

NOTES:

FOR ELECTRICAL  
TORQUE  
SPECIFICATIONS  
SEE DWG NO.  
128783-01-000

	FOR ELECTRICAL CALLOUTS SEE DWG NO. 121339-01-000
---	---



7. ALL WIRES TO BE SECURED WITH CLAMP 10495 OR 10497 OR WIRE TIE 8343 OR 108046 EVERY 600MM, USE SCREW G67-XX-XXX OR G56-XX-XXX AS APPROPRIATE FOR INSTALLATION.

6 NOT USED WITH 1JU

5 CONNECT TELEPHONE WIRE TO MATCHING COLORS ON WALLPLATE - TELEPHONE.

4 MOUNT MAGNET USING PILOT HOLES IN SCREEN DOOR FRAME,  
MOUNT WITH MAGNET TOWARD SWITCH.

3 MOUNT SWITCH AND SPACER TO BLOCK ON JAMB, ADJUST HEIGHT TO MATCH MAGNET.

2 WIRE ASM-COACH PASSES THRU FLOOR IN THIS AREA.

1 SEE WIRING INSTL-FRONT END FOR WIRING INFORMATION.

NOTES:

(50H) RADIOS TWO-WAY (4)  
 (1JU) TV (REAR)-19"COLOR, STEREO  
 (1JM) HOME THEATER SOUND SYSTEM  
 (1D5) ENTERTAINMENT CENTR/EXT W/CD  
 (1TA) ITASCA ONLY  
 (WIN) WINNEBAGO ONLY  
 (265) CODES/STANDARDS-CSA/CMVSS  
 (1B1) CODES/STANDARDS USA

181 265

06 D29R

DO NOT SCALE DRAWING

TITLE: WIRING INSTL-BODY, 12V

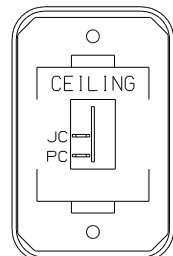
SHEET 3

PART NO 153513

1 10/17/2005

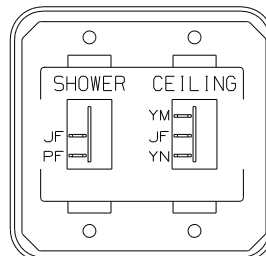
FOR ELECTRICAL  
TORQUE  
SPECIFICATIONS  
SEE DWG NO.  
128783-01-000

	FOR ELECTRICAL CALLOUTS SEE DWG NO. 121339-01-000
---	---



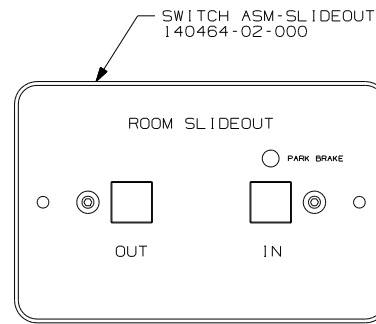
DETAIL DA

SWITCH-ROCKER  
135740-01-CHT  
SWITCH-BASE  
135741-01-CHT  
SWITCH-BEZEL  
135742-07-CHT  
SCREW  
G11-08-08U (2)



DETAIL DE

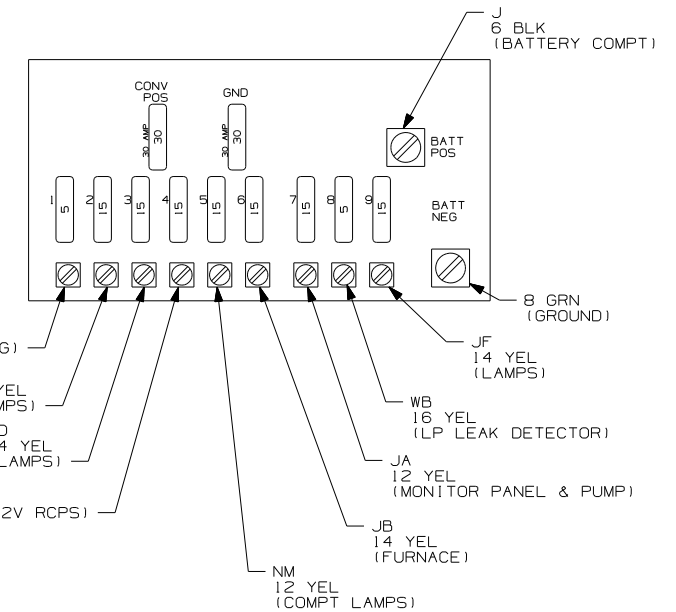
SWITCH-ROCKER  
135740-01-CHT  
135740-02-CHT  
SWITCH-BASE  
135741-02-CHT  
SWITCH-BEZEL  
135742-15-CHT  
SCREW  
G11-08-08U (4)



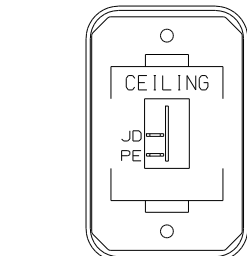
DETAIL DK

WARNING  
UNDERSTAND OPERATOR'S MANUAL BEFORE USING  
KEEP PEOPLE AND OBSTRUCTIONS CLEAR OF  
SLIDEOUT ROOM WHEN OPERATING TO AVOID  
INJURY AND/OR PROPERTY DAMAGE

LABEL-WARNING  
116549-01-000

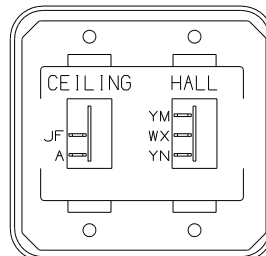


DETAIL DM <sup>3</sup>



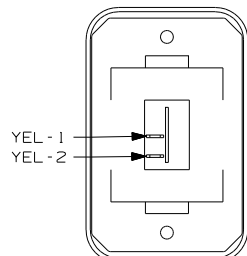
DETAIL DB

SWITCH-ROCKER  
135740-01-CHT  
SWITCH-BASE  
135741-01-CHT  
SWITCH-BEZEL  
135742-07-CHT  
SCREW  
G11-08-08U (2)



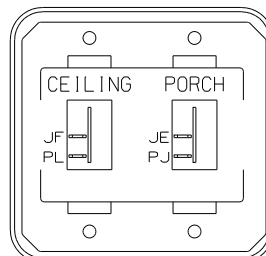
DETAIL DF

SWITCH-ROCKER  
135740-01-CHT  
135740-02-CHT  
SWITCH-BASE  
135741-02-CHT  
SWITCH-BEZEL  
135742-16-CHT  
SCREW  
G11-08-08U (4)



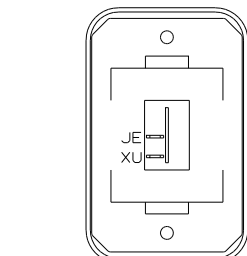
DETAIL DC

SWITCH-ROCKER  
135740-01-CHT  
SWITCH-BASE  
135741-01-CHT  
SWITCH-BEZEL  
135742-01-CHT  
SCREW  
G11-08-08U (2)



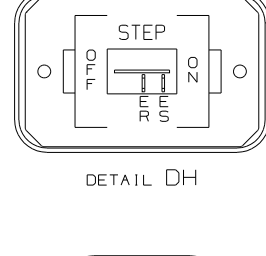
DETAIL DG

SWITCH-ROCKER  
135740-01-CHT (2)  
SWITCH-BASE  
135741-02-CHT  
SWITCH-BEZEL  
135742-19-CHT  
SCREW  
G11-08-08U (4)



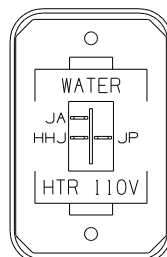
DETAIL DD

SWITCH-ROCKER  
135740-01-CHT  
SWITCH-BASE  
135741-01-CHT  
SWITCH-BEZEL  
135742-01-CHT  
SCREW  
G11-08-08U (2)



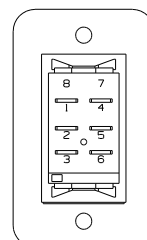
DETAIL DH

SWITCH-ROCKER  
135740-01-CHT  
SWITCH-BASE  
135741-01-CHT  
SWITCH-BEZEL  
135742-11-CHT  
SCREW  
G11-08-08U (2)

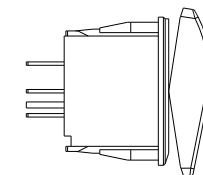


DETAIL DJ <sup>53Z</sup>

SWITCH-ROCKER  
135740-06-CHT  
SWITCH-BASE  
135741-01-CHT  
SWITCH-BEZEL  
135742-35-CHT  
SCREW  
G11-08-08U (2)

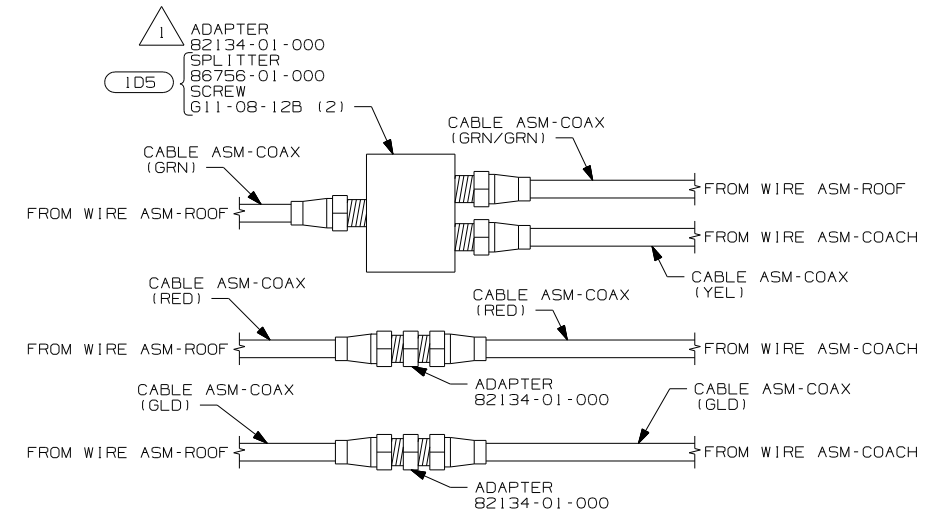


DETAIL DL



SWITCH-BATTERY, DISC  
108357-06-000  
ACTUATOR-SWITCH  
108356-11-CHT  
PLATE-SWITCH  
98351-07-CHT  
SCREW  
G11-06-10U (2)

<sup>2</sup>



DETAIL DN

<sup>53Z</sup> WTR HTR-6GAL/110/LP/MTR/AUTO  
<sup>1D5</sup> ENTERTAINMENT CENTR/EXT W/CD  
<sup>265</sup> CODES/STANDARDS-CSA/CMVSS  
<sup>1B1</sup> CODES/STANDARDS USA

<sup>1B1</sup> <sup>265</sup>

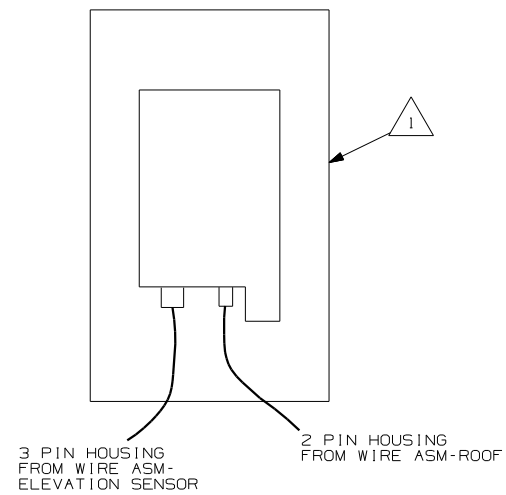
FIRST USED  
06 D29R  
DO NOT SCALE DRAWING  
TITLE:  
WIRING INSTL-BODY, 12V  
SHEET 4 PART NO  
153513

FOR ELECTRICAL  
TORQUE  
SPECIFICATIONS  
SEE DWG NO.  
128783-01-000

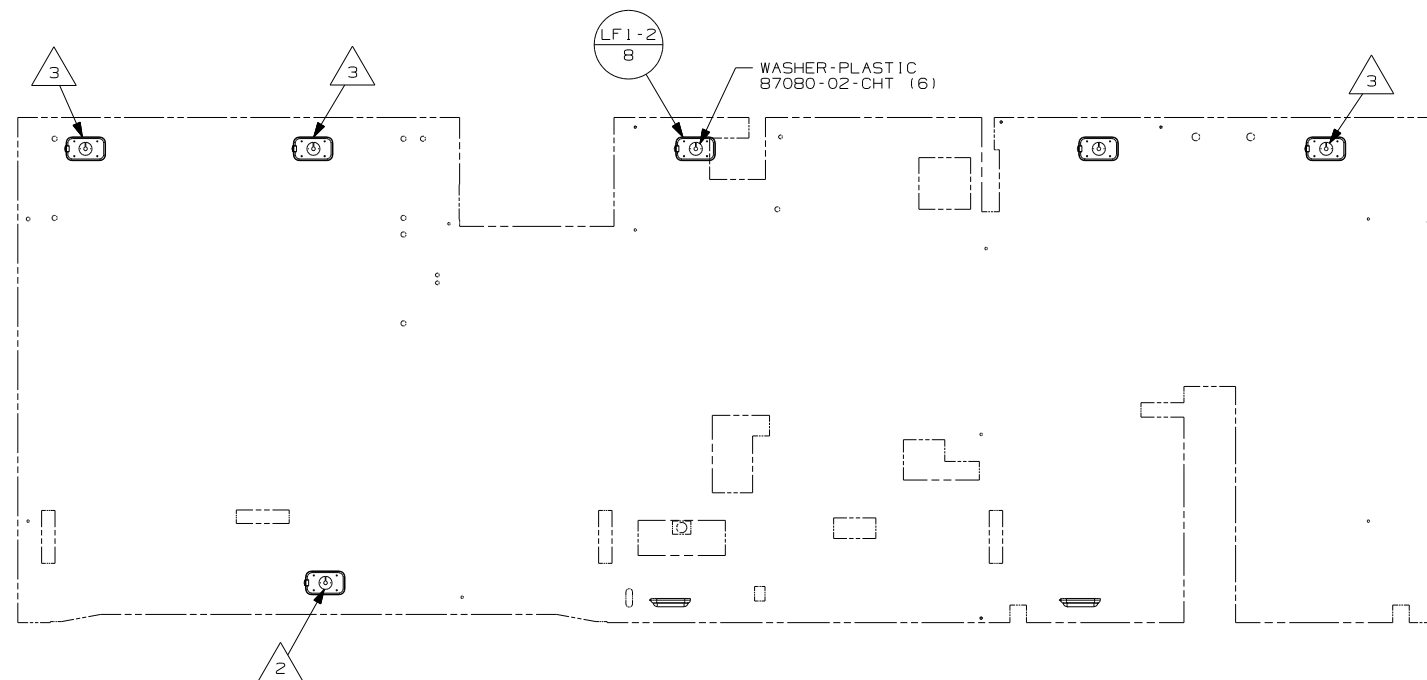
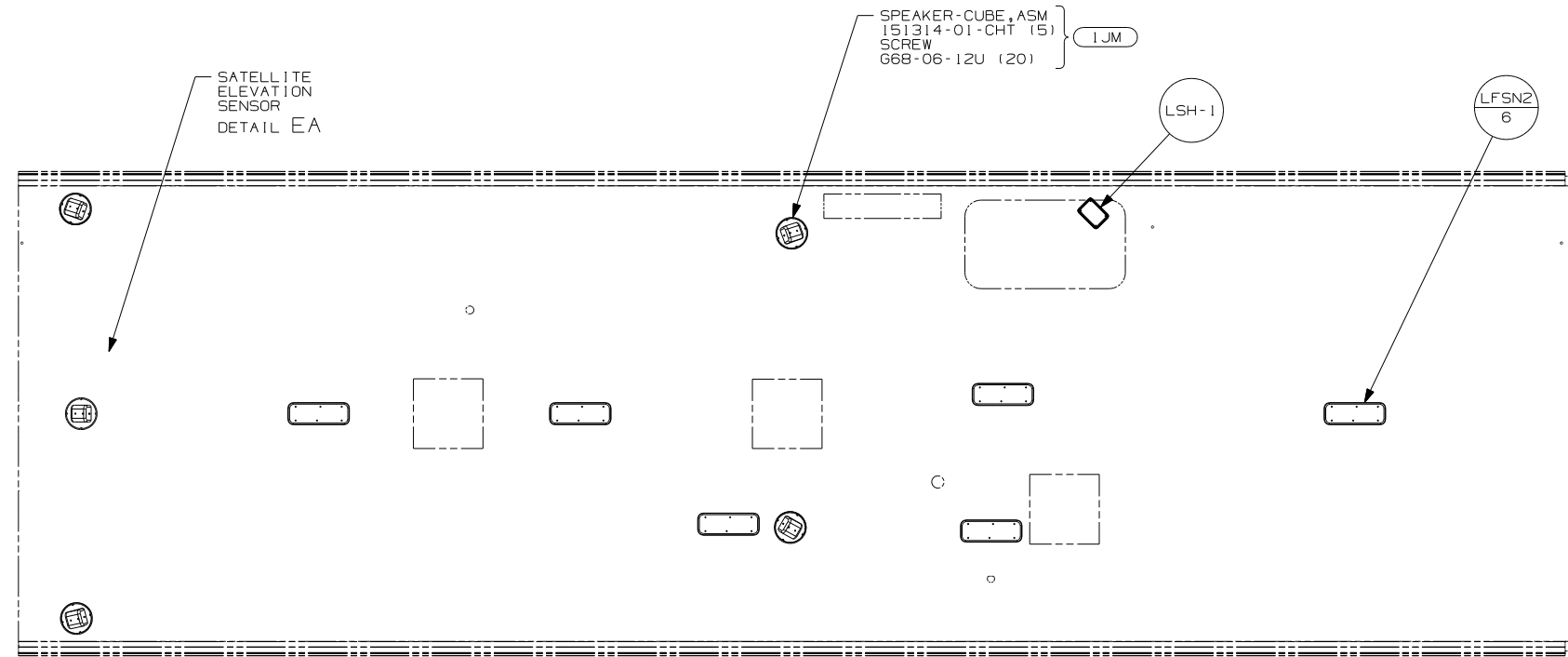
FOR  
ELECTRICAL  
CALLOUTS  
SEE DWG NO.  
121339-01-000

<sup>3</sup> FOR REFERENCE ONLY. SEE LOAD CENTER  
ASM FOR ADDITIONAL INFORMATION.  
<sup>2</sup> SWITCH IS TO MOUNTED WITH HOUSING  
ALIGNMENT POST TO BOTTOM OF CONDUIT.  
<sup>1</sup> WITHOUT <sup>1D5</sup> USE ADAPTOR AND CONNECT  
GRN COAX TO GRN/GRN COAX.

NOTES:



DETAIL EA



- 1JM HOME THEATER SOUND SYSTEM  
265 CODES/STANDARDS-CSA/CMVSS  
1B1 CODES/STANDARDS USA

- 181 265

06 D29R


DO NOT SCALE DRAWING

TITLE: WIRING INSTL-BODY, 12V

SHEET 5	PART NO 153513
---------	----------------

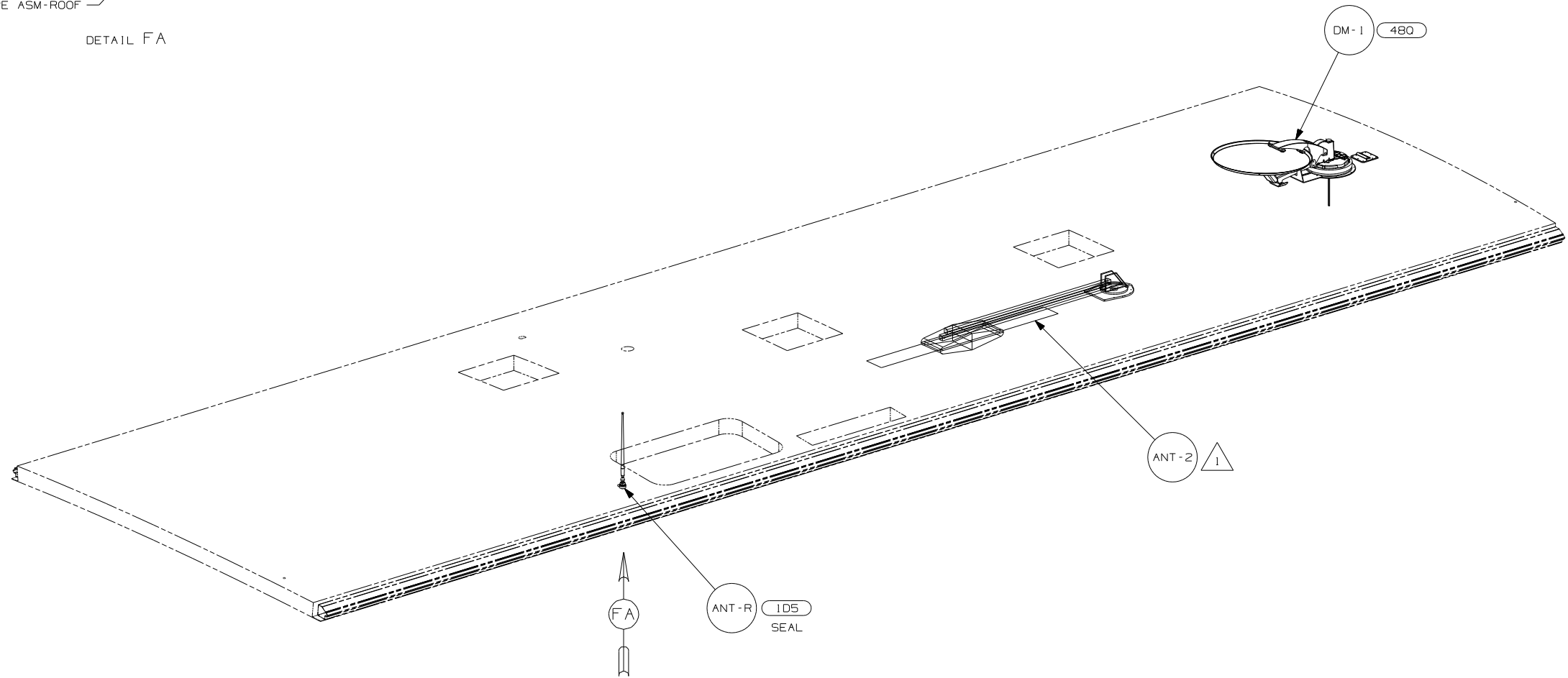
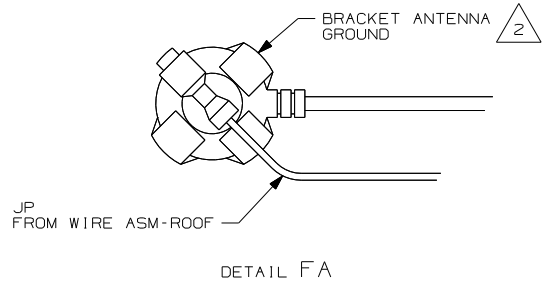
10/17/2005

FOR ELECTRICAL  
TORQUE  
SPECIFICATIONS  
SEE DWG NO.  
128783-01-000

	FOR ELECTRICAL CALLOUTS SEE DWG NO. 121339-01-000
---	---

3	WIRE ROUTED IN FLOOR.
2	SEE WIRING INSTL-CHASSIS FOR WIRING INFORMATION.
1	SENSOR SUPPLIED WITH SATELLITE ASSEMBLY.

NOTES:



NOTES:

2 WRAP BRACKET LEGS AROUND ANTENNA BASE.

1 SEE DWG 76319-01-000 FOR INSTALLATION INSTRUCTIONS.

FOR ELECTRICAL  
TORQUE  
SPECIFICATIONS  
SEE DWG NO.  
128783-01-000

FOR  
ELECTRICAL  
CALLOUTS  
SEE DWG NO.  
121339-01-000

- 480 SATELLITE DISH & ELEV.SENSOR
- 1D5 ENTERTAINMENT CENTR/EXT W/CD
- 265 CODES/STANDARDS-CSA/CMVSS
- 1B1 CODES/STANDARDS USA

FIRST USED		06 D29R
DO NOT SCALE DRAWING		
TITLE:		WIRING INSTL-BODY,12V
SHEET 6	PART NO	153513