



DANGER

Danger of electrical shock, burns or death. Always remove all power sources before attempting any repair, service or diagnostic work. Power can be present from shore power, generator, inverter or battery. All power sources must be disabled and secured before performing any service.

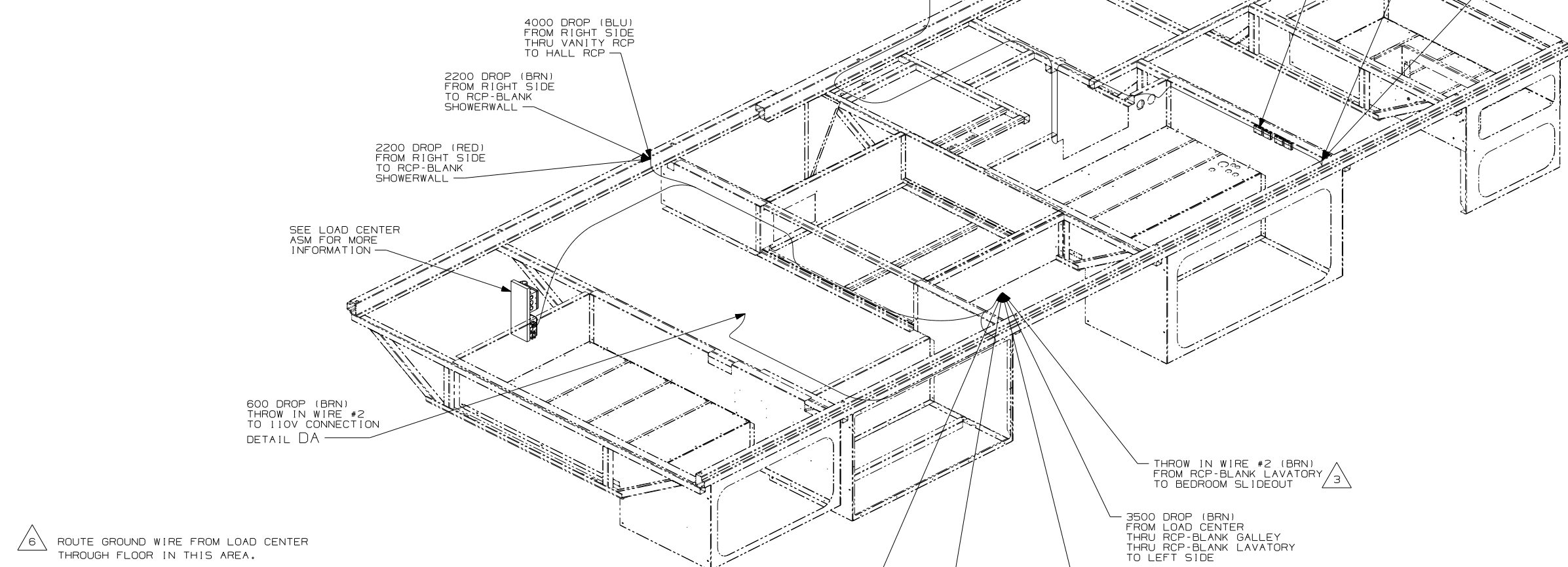
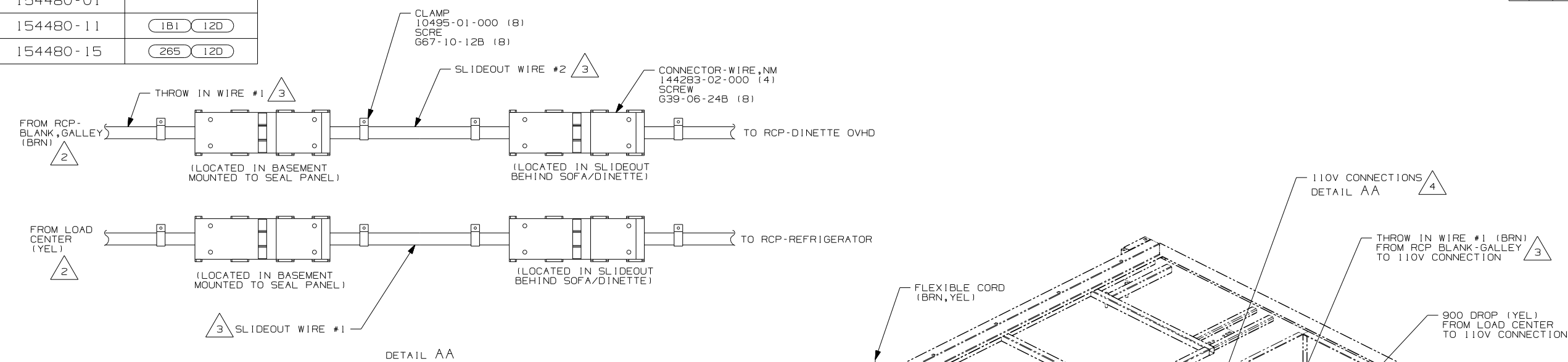


CAUTION

If you lack the skills, tools or equipment to perform diagnostic or repair work leave such work to an authorized Winnebago Industries dealer or other qualified shop.

DRAWING NO.	FEATURE
154480-01	
154480-11	(1B1) (12D)
154480-15	(265) (12D)

RELEASE	REV DATE	154480
REV ZONE	REVISION RECORD	DATE DFR-ORIG



- △ 6 ROUTE GROUND WIRE FROM LOAD CENTER THROUGH FLOOR IN THIS AREA.
- 5. ALL WIRES TO BE SECURED WITH CLAMP 10495 OR 10497 OR WIRE TIE 8343 OR 108046 EVERY 600MM, USE SCREW 667-XX-XXX OR 656-XX-XXX AS APPROPRIATE FOR INTALLATION.
- △ 4 110V CONNECTIONS MUST BE WITHIN 50MM OF THE TOP OF THE FRAME RAIL.
- △ 3 SEE LOAD CENTER ASM FOR ADDITIONAL INFORMATION.
- △ 2 CONNECTOR-WIRE, NM IS INSTALLED ON THIS CIRCUIT IN 110V WIRE PREP.
- 1. WIRES ROUTED UNDER FLOOR.

(12D)	ELECTRICAL SYSTEM 30 AMP
(265)	CODES/STANDARDS-CSA/CMVSS
(1B1)	CODES/STANDARDS USA
(1B1) (265) (12D)	

WINNEBAGO COPYRIGHT 2006 WINNEBAGO INDUSTRIES, INC.

DFTR	ORIG. DATE
CHKR	ALL DIMENSIONS ARE IN MILLIMETERS
P.E.	
M.E.	FIRST USED
DSNR	06 D26P

UNSPECIFIED TOLERANCES ARE: MATERIAL:

HOLE DIM (X)	: 3
ONE-PLACE (X.X)	: 1.5
TWO-PLACE (X.XX)	: 0.50
ANGLE	: 1°

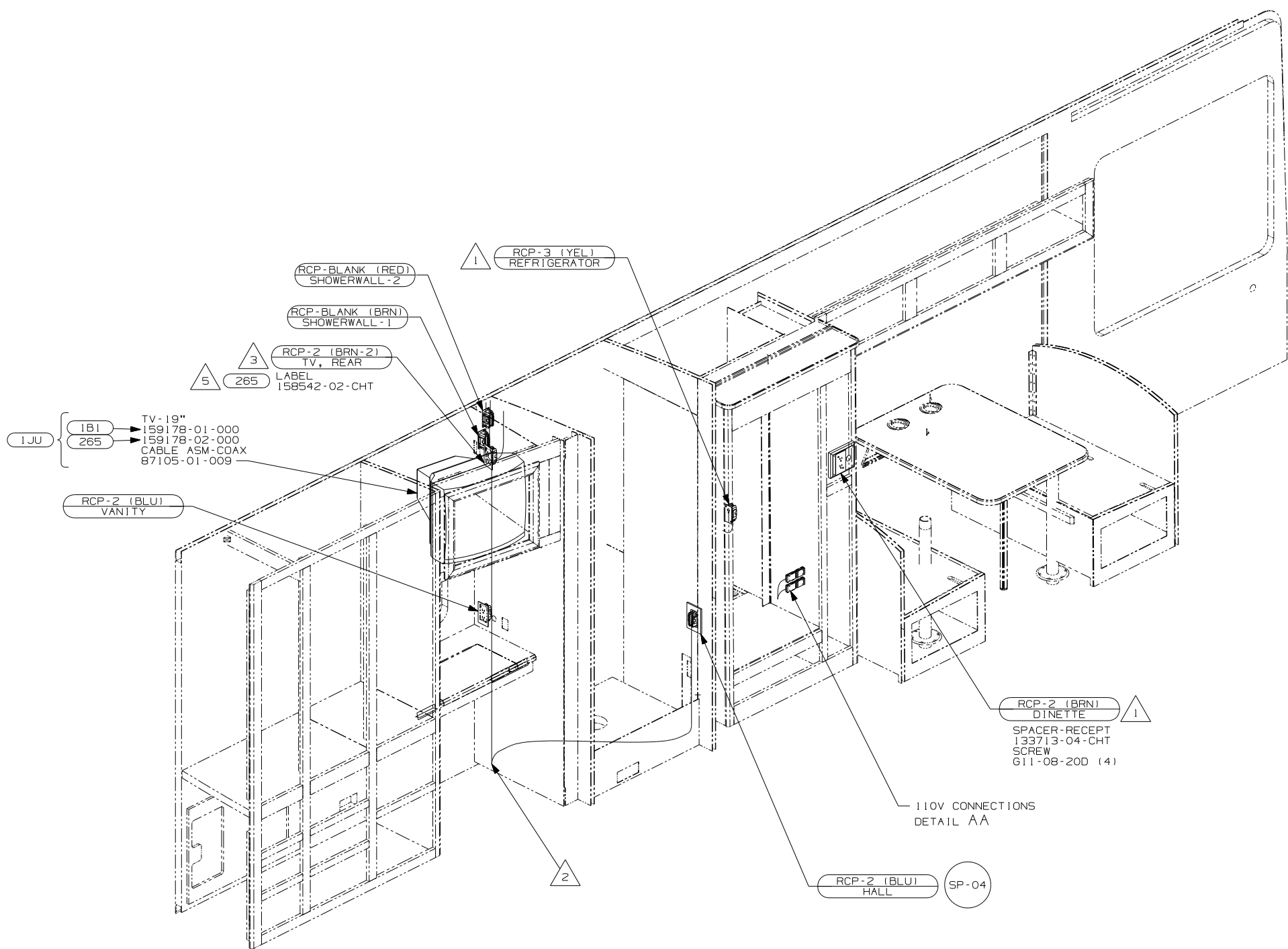
THIRD ANGLE PROJECTION

DO NOT SCALE DRAWING

TITLE: WIRING INSTL-BODY, 110V

SHEET 1 of 4 PART NO 154480 REV

REF: 1 6/16/2006



- 1JU TV-19"
- 1B1 159178-01-000
- 265 159178-02-000
- CABLE ASM-COAX
- 87105-01-009

RCP-2 (BLU) VANITY

RCP-2 (BRN) DINETTE (triangle 1)
 SPACER-RECEPT
 133713-04-CHT
 SCREW
 611-08-20D (4)

110V CONNECTIONS
 DETAIL AA

RCP-2 (BLU) HALL (SP-04)

(triangle 5) WITHOUT 1JU

4. ALL WIRES TO BE SECURED WITH CLAMP 10495 OR 10497 OR WIRE TIE 8343 OR 108046 EVERY 600MM, USE SCREW G67-XX-XXX OR G56-XX-XXX AS APPROPRIATE FOR INTALLATION.

(triangle 3) WIRE ROUTED IN ROOF.

(triangle 2) WIRE ROUTED THRU FLOOR IN THIS AREA.

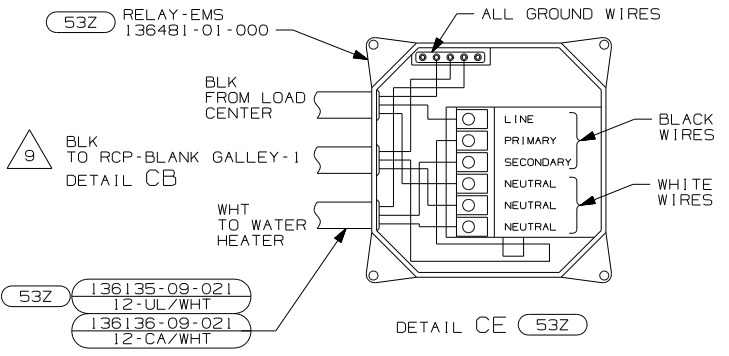
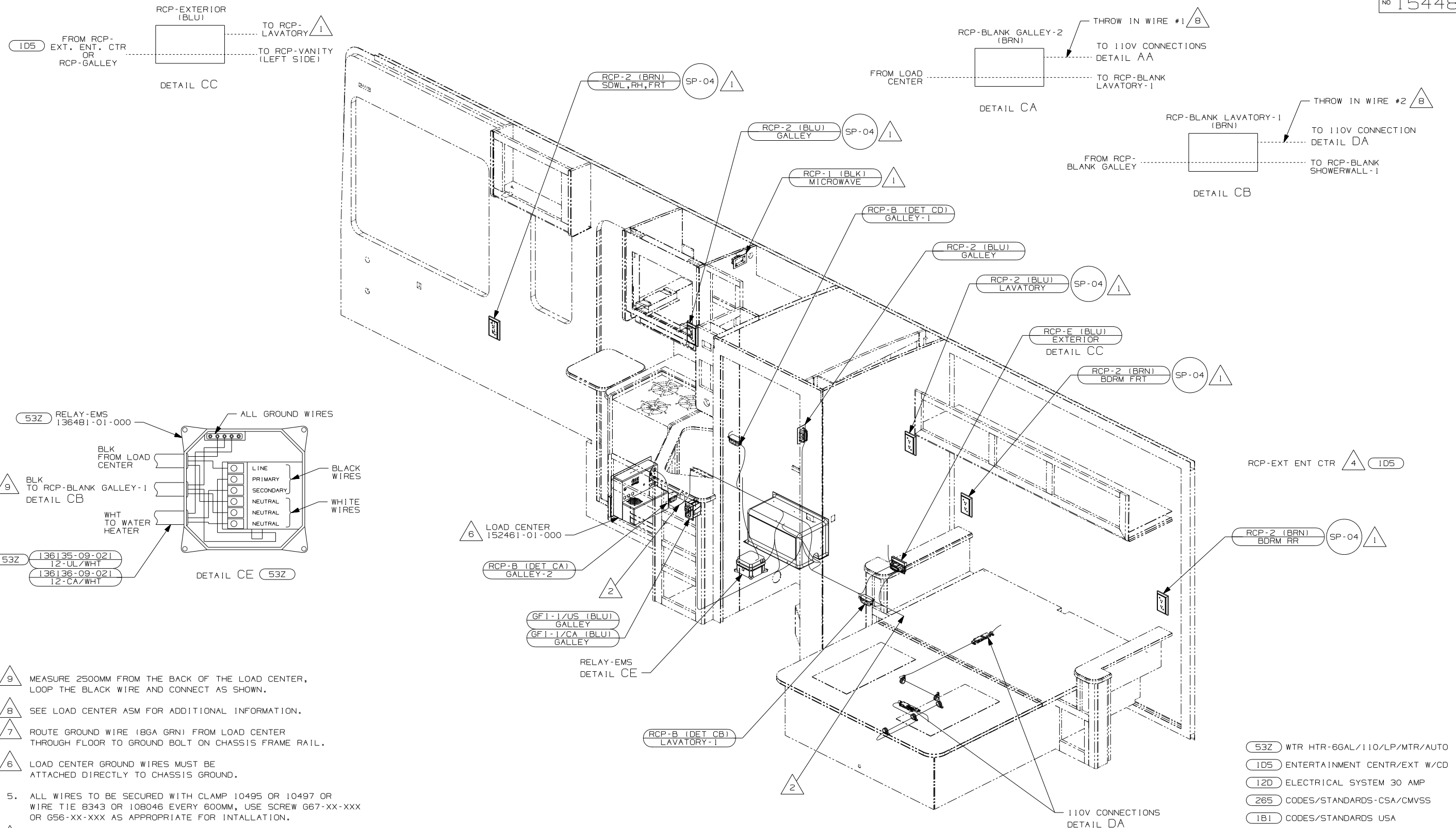
(triangle 1) WIRE ROUTED IN SIDEWALL.

NOTES:

- 1JU TV (REAR)-19"COLOR, STEREO
- 12D ELECTRICAL SYSTEM 30 AMP
- 265 CODES/STANDARDS-CSA/CMVSS
- 1B1 CODES/STANDARDS USA

1B1 265 12D

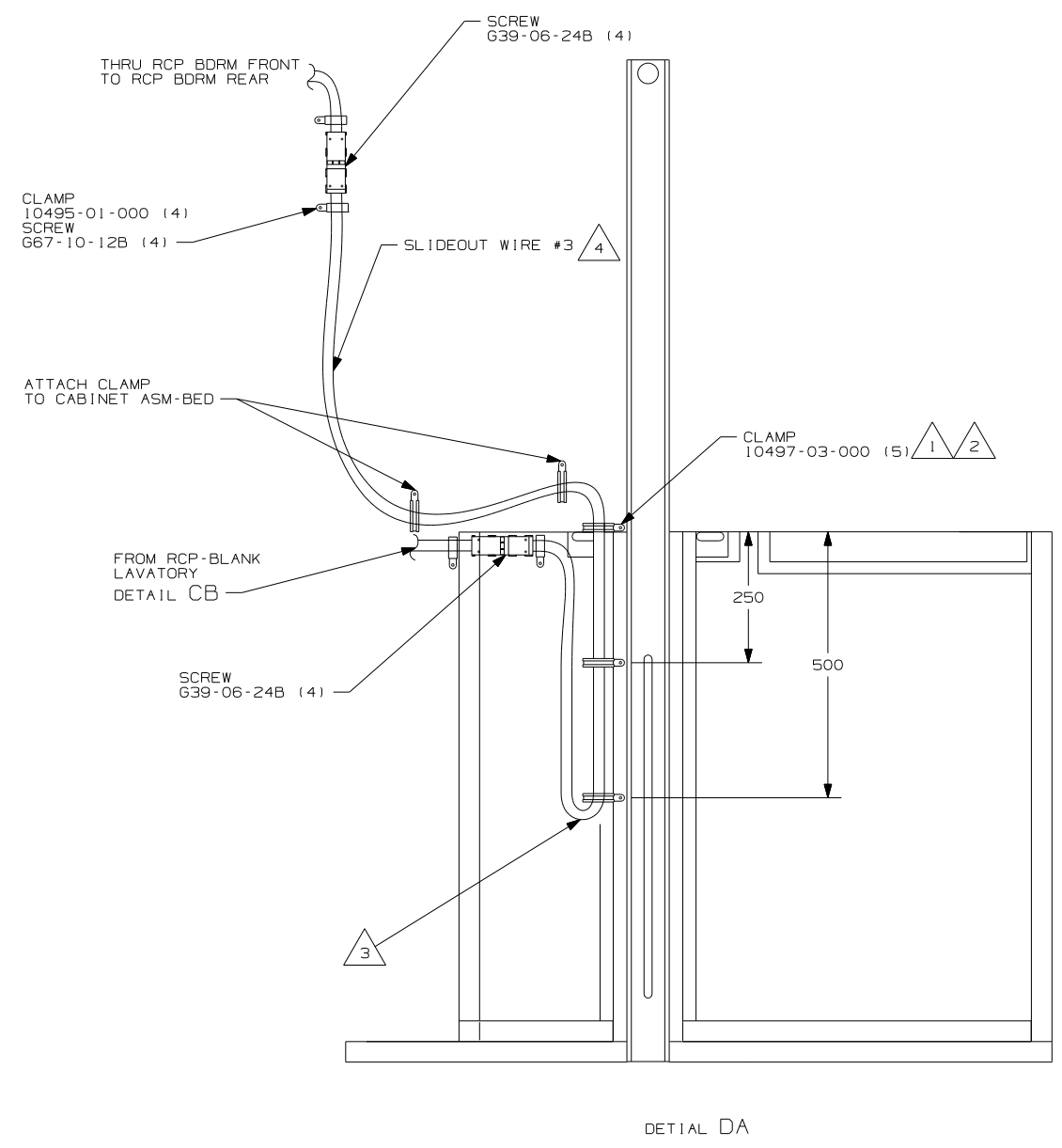
FIRST USED		06 D26P	
DO NOT SCALE DRAWING			
TITLE: WIRING INSTL-BODY, 110V			
SHEET 2	PART NO	154480	REV



- NOTES:
- 9 MEASURE 2500MM FROM THE BACK OF THE LOAD CENTER, LOOP THE BLACK WIRE AND CONNECT AS SHOWN.
 - 8 SEE LOAD CENTER ASM FOR ADDITIONAL INFORMATION.
 - 7 ROUTE GROUND WIRE (8GA GRN) FROM LOAD CENTER THROUGH FLOOR TO GROUND BOLT ON CHASSIS FRAME RAIL.
 - 6 LOAD CENTER GROUND WIRES MUST BE ATTACHED DIRECTLY TO CHASSIS GROUND.
 - 5. ALL WIRES TO BE SECURED WITH CLAMP 10495 OR 10497 OR WIRE TIE 8343 OR 108046 EVERY 600MM, USE SCREW G67-XX-XXX OR G56-XX-XXX AS APPROPRIATE FOR INTALLATION.
 - 4 SEE ENTERTAINMENT CENTER COMPL. FOR ADDITIONAL INFORMATION.
 - 3 WIRE ROUTED IN ROOF.
 - 2 WIRE ROUTED THRU FLOOR IN THIS AREA.
 - 1 WIRE ROUTED IN SIDEWALL.

- 53Z WTR HTR-6GAL/110V/LP/MTR/AUTO
- 1D5 ENTERTAINMENT CENTR/EXT W/CD
- 12D ELECTRICAL SYSTEM 30 AMP
- 265 CODES/STANDARDS-CSA/CMVSS
- 1B1 CODES/STANDARDS USA

FIRST USED		06 D26P	
DO NOT SCALE DRAWING			
TITLE: WIRING INSTL-BODY, 110V			
SHEET 3	PART NO	154480	REV



- NOTES:
- 4 FOR MORE INFORMATION SEE LOAD CENTER/ATS ASM.
 - 3 MAKE THE LOOP AS SMALL AS POSSIBLE WHEN SLIDEOUT IS COMPLETELY RETRACTED.
 - 2 RUN 12V WIRE ALONG WITH SLIDEOUT WIRE #3.
 - 1 WIRE MUST BE ROUTED THROUGH CLAMPS AS SHOWN.

FOR ELECTRICAL TORQUE SPECIFICATIONS SEE DWG NO. 128783-01-000

FOR ELECTRICAL CALLOUTS SEE DWG NO. 121339-01-000

FIRST USED		06 D26P	
DO NOT SCALE DRAWING			
TITLE:		WIRING INSTL-BODY, 110V	
SHEET 4	PART NO	154480	REV