



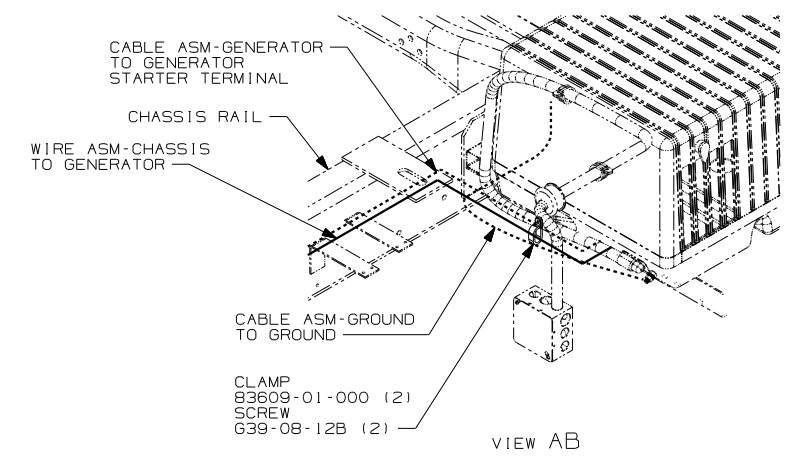
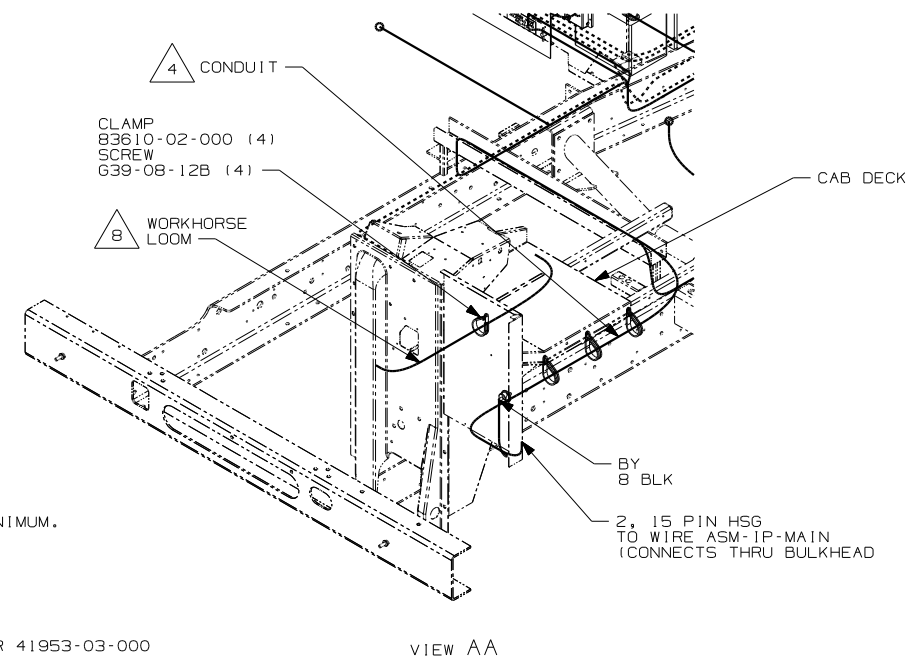
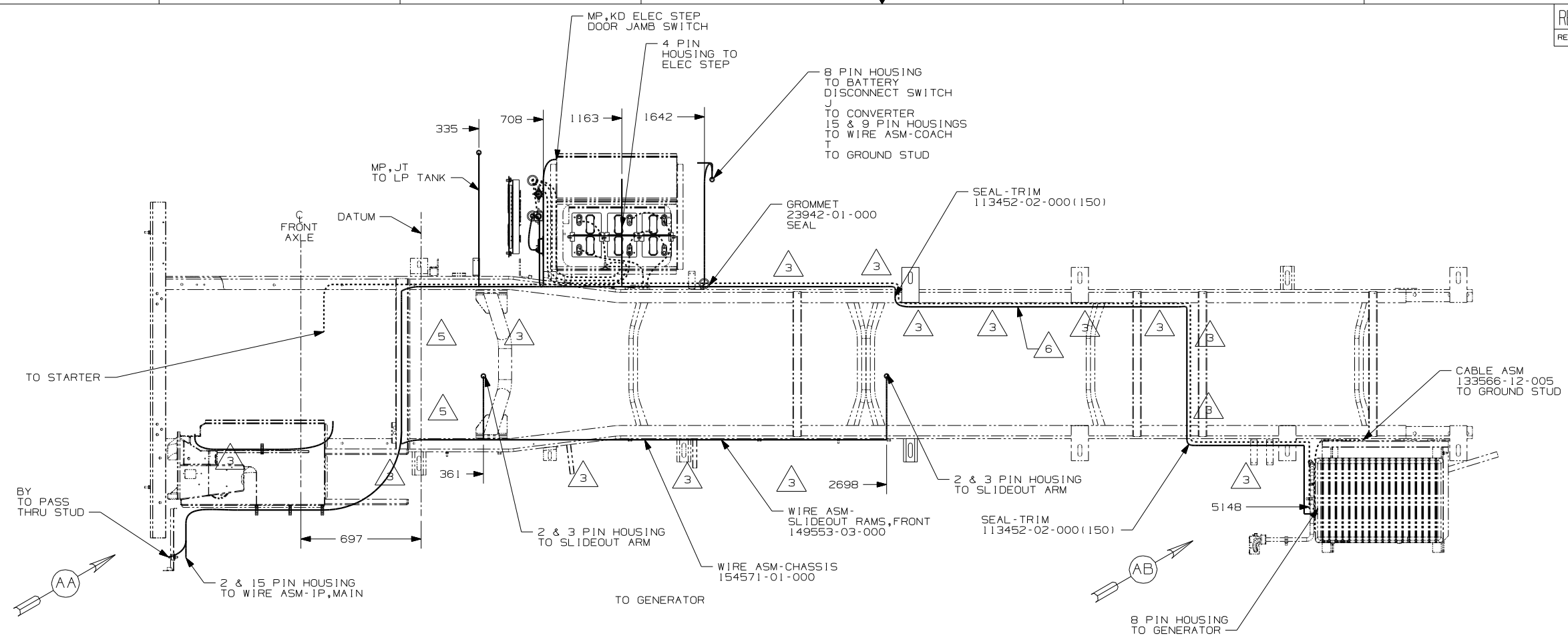
**DANGER**

**Danger of electrical shock, burns or death.** Always remove all power sources before attempting any repair, service or diagnostic work. Power can be present from shore power, generator, inverter or battery. All power sources must be disabled and secured before performing any service.



**CAUTION**

If you lack the skills, tools or equipment to perform diagnostic or repair work leave such work to an authorized Winnebago Industries dealer or other qualified shop.



- 8 CLAMP WORKHORSE ENGINE HARNESS TO CAB DECK TO PROTECT HARNESS FROM DAMAGE.
- 7. WIRE TIE 8343-04-000. FASTEN EVERY 600MM MINIMUM.
- 6 ROUTE WIRES INSIDE OF CHASSIS RAIL.
- 5 CLAMP 10497-03-000, SCREW 639-08-12B.
- 4 SECURE CONDUIT 41953-01-000, 41953-02-000 OR 41953-03-000 OVER ALL WIRES IN CONTACT WITH SHARP EDGES.
- 3 CLAMP 83610-01-000, SCREW 639-08-12B.

2. USE 116673-01-000 TO SECURE WIRES THRU HOLES IN CHASSIS FRAME.

1. LEGEND: — WINNEBAGO, .....CABLE, - - - - -CHASSIS SUPPLIED.

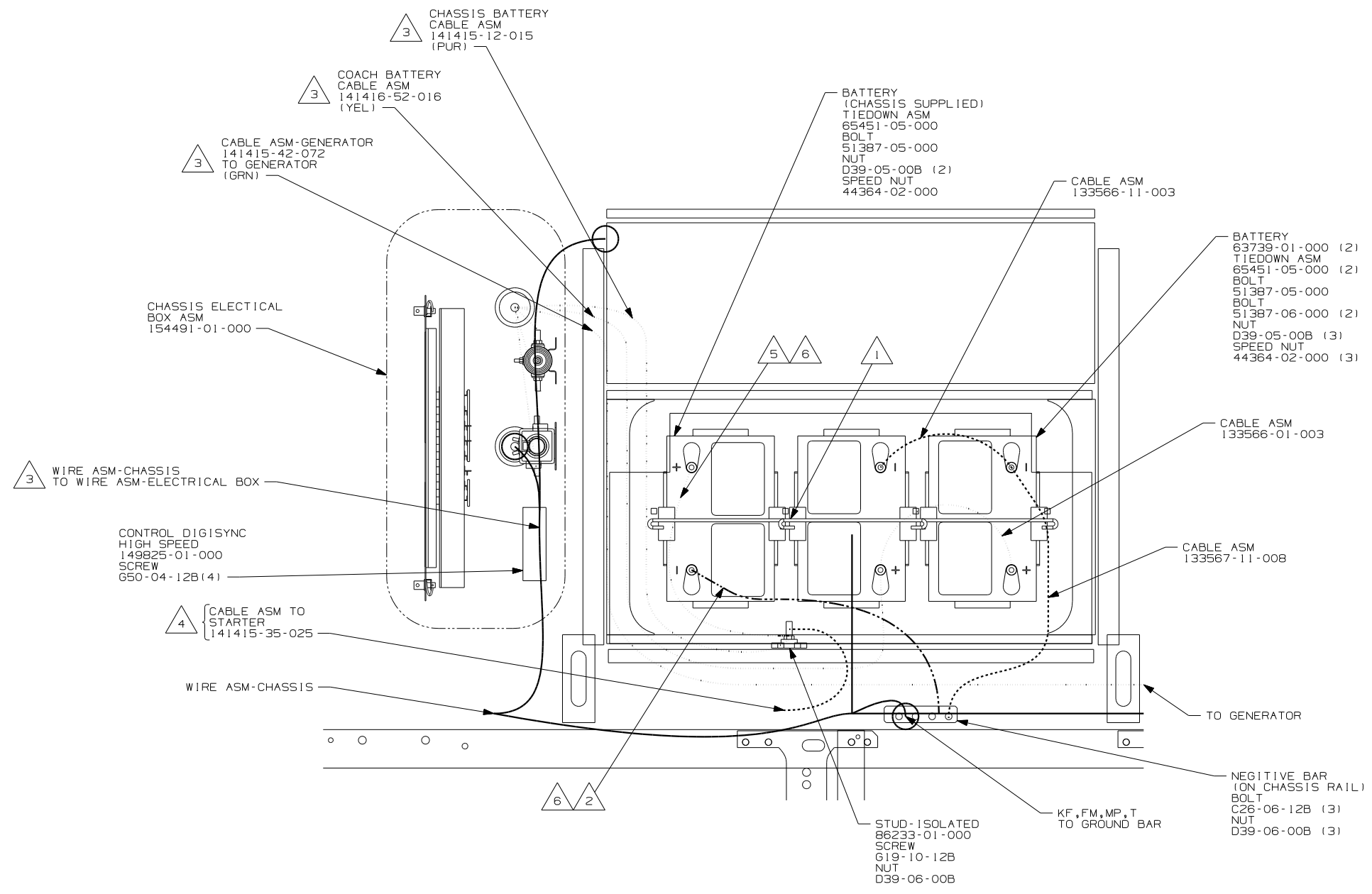
NOTES:

- 1PJ WORKHORSE 16,000# GVWR (W16)
- 1PC WORKHORSE CH. 15,000 LB. GVWR.
- 265 CODES/STANDARDS-CSA/CMVSS
- 1B1 CODES STANDARDS/USA

<b>WINNEBAGO</b>		COPYRIGHT 2004 WINNEBAGO INDUSTRIES, INC.	
DFTR	ORIG. DATE		
CHKR	ALL DIMENSIONS ARE IN MILLIMETERS		
P.E.	FIRST USED	06 D26P	
M.E.			
DSNR			
UNSPECIFIED TOLERANCES ARE:		MATERIAL:	
WHOLE DIM (X)	: 3		
ONE-PLACE (X.X)	: 1.5		
TWO-PLACE (X.XX)	: 0.50		
ANGLE	: 1°		
THIRD ANGLE PROJECTION			

FOR ELECTRICAL TORQUE SPECIFICATIONS SEE DWG NO. 128783-01-000

X-X FOR ELECTRICAL CALLOUTS SEE DWG NO. 121339-01-000



VIEW BA

- 6 SUPPLIED WITH CHASSIS
- 5 TRIM POSITIVE BATTERY CABLE TO 500MM AND ADD TERMINALS 68070-01-000 (2).
- 4 BATTERY CABLES MUST BE INSTALLED TO STARTER MOTOR BEFORE ENGINE WIRING HARNESS AND ROUTED IN SUCH A MANNER AS TO PREVENT ANY POSSIBLE DEGRADATION FROM THE EXHAUST SYSTEM.
- 3 SEE CHASSIS ELECTRICAL BOX FOR ADDITIONAL INFORMATION.
- 2 TRIM NEGATIVE BATTERY CABLE TO 500MM AND ADD TERMINALS 8348-01-000 (2).
- 1 USE TWO NUTS HERE TO ACCOUNT FOR BATTERY HEIGHT DIFFERENCE.

NOTES:

- IPJ WORKHORSE 16,000# GVWR (W16)
- IPC WORKHORSE CH. 15,000LB. GVWR
- 265 CODES/STANDARDS-CSA/CMVSS
- 1B1 CODES/STANDARDS USA

FIRST USED	
06 D26P	
DO NOT SCALE DRAWING	
TITLE: WIRING INSTL-CHASSIS	
SHEET 2	PART NO 154386

FOR ELECTRICAL TORQUE SPECIFICATIONS SEE DWG NO. 128783-01-000

FOR ELECTRICAL CALLOUTS SEE DWG NO. 121339-01-000