



**DANGER**

**Danger of electrical shock, burns or death.** Always remove all power sources before attempting any repair, service or diagnostic work. Power can be present from shore power, generator, inverter or battery. All power sources must be disabled and secured before performing any service.

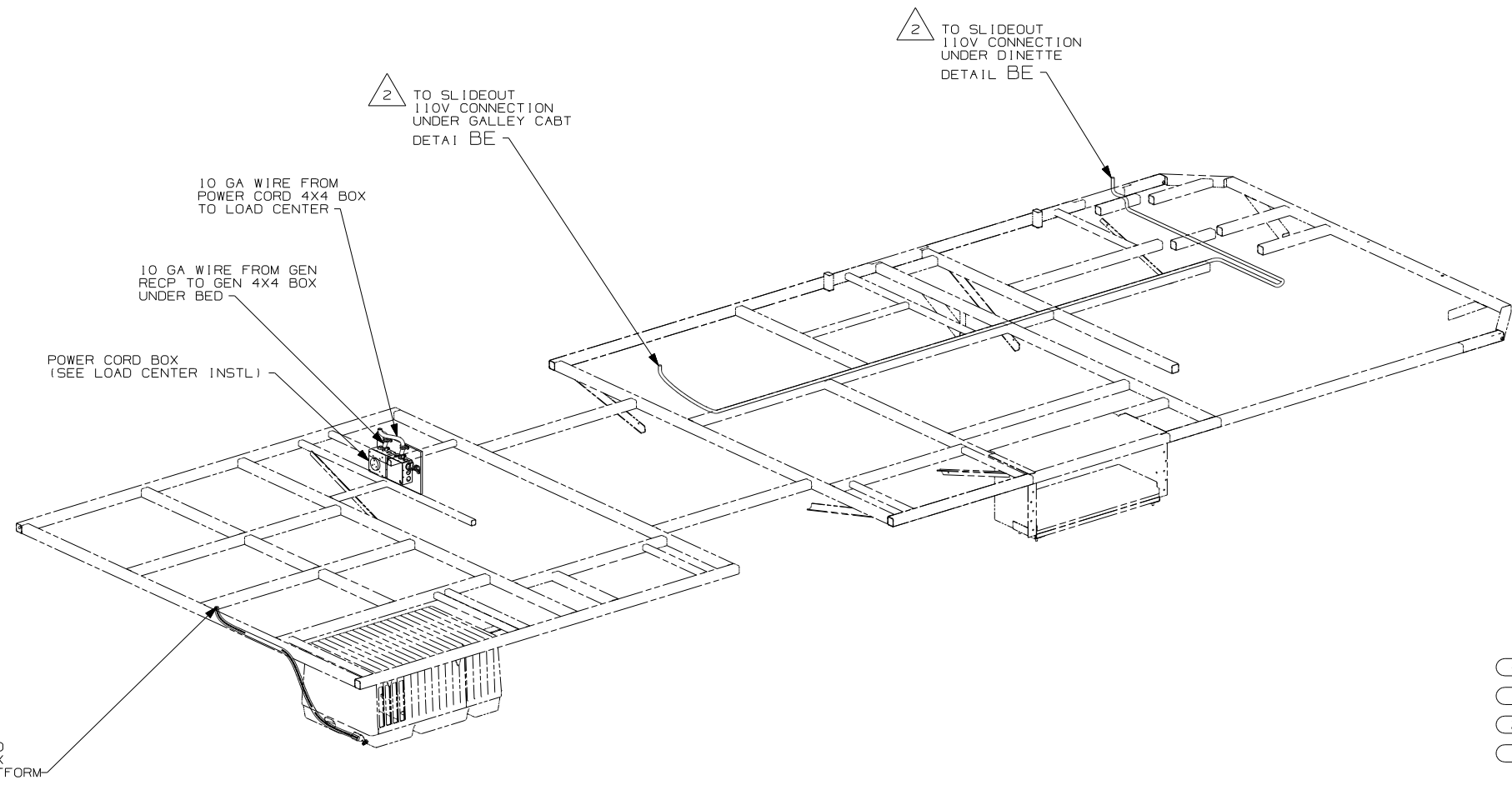


**CAUTION**

If you lack the skills, tools or equipment to perform diagnostic or repair work leave such work to an authorized Winnebago Industries dealer or other qualified shop.

DRAWING NO.	FEATURE
155294-01	-----
155294-11	(12D) (1B1)
155294-15	(12D) (265)

RELEASE	REV DATE	DWG NO	155294
REV ZONE	REVISION RECORD	DATE	DFT-ORIG



1 (40N) 10 GA WIRE FROM GENERATOR TO GENERATOR 4X4 BOX UNDER SHOWER PLATFORM

POWER CORD BOX (SEE LOAD CENTER INSTL)

10 GA WIRE FROM GEN RECP TO GEN 4X4 BOX UNDER BED

10 GA WIRE FROM POWER CORD 4X4 BOX TO LOAD CENTER

2 TO SLIDEOUT 110V CONNECTION UNDER GALLEY CABT DETAIL BE

2 TO SLIDEOUT 110V CONNECTION UNDER DINETTE DETAIL BE

- (40N) GEN-4.0KW-ONANGAS-MICROQUIET
- (12D) ELECTRICAL SYSTEM 30 AMP
- (265) CODES/STANDARDS-CSA/CMVSS
- (1B1) CODES/STANDARDS USA

(1B1) (265) (12D)

**WINNEBAGO** COPYRIGHT 2004 WINNEBAGO INDUSTRIES, INC.

DFT	ORIG. DATE
CHKR	ALL DIMENSIONS ARE IN MILLIMETERS
P.E.	
M.E.	FIRST USED
DSNR	06 729H

UNSPECIFIED TOLERANCES ARE:	MATERIAL:
HOLE DIM (X) :	
ONE-PLACE (X.X) :	
TWO-PLACE (X.XX) :	
ANGLE :	
THIRD ANGLE PROJECTION	

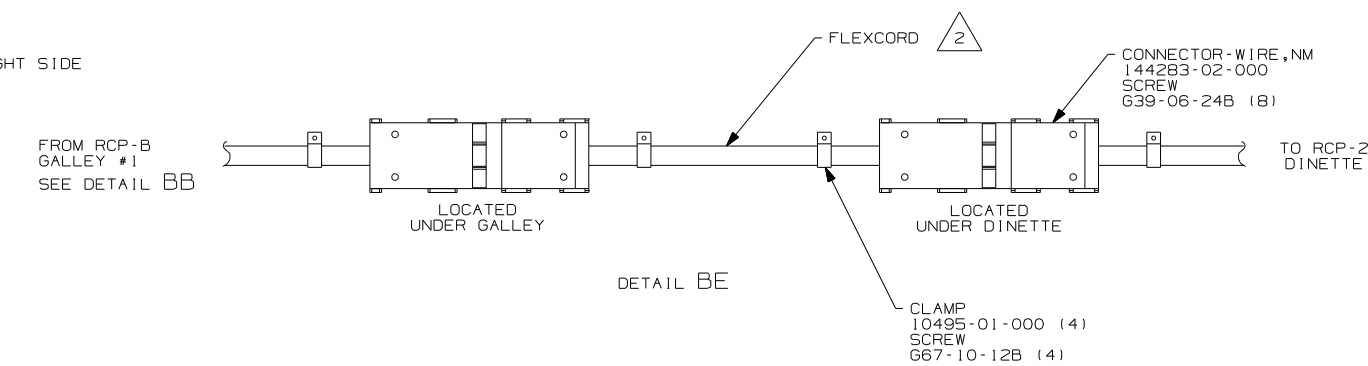
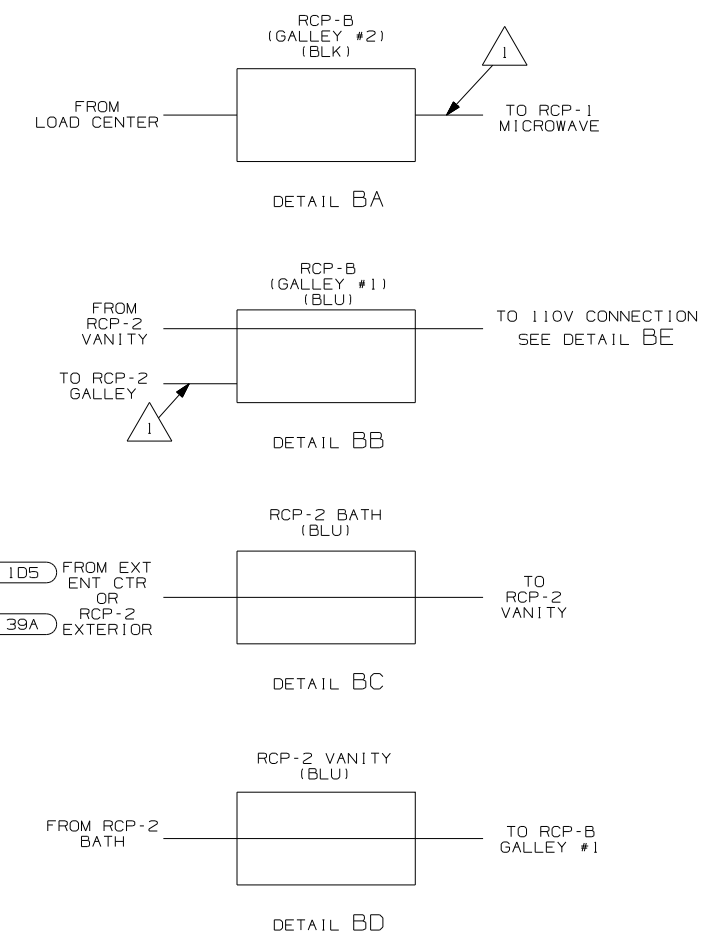
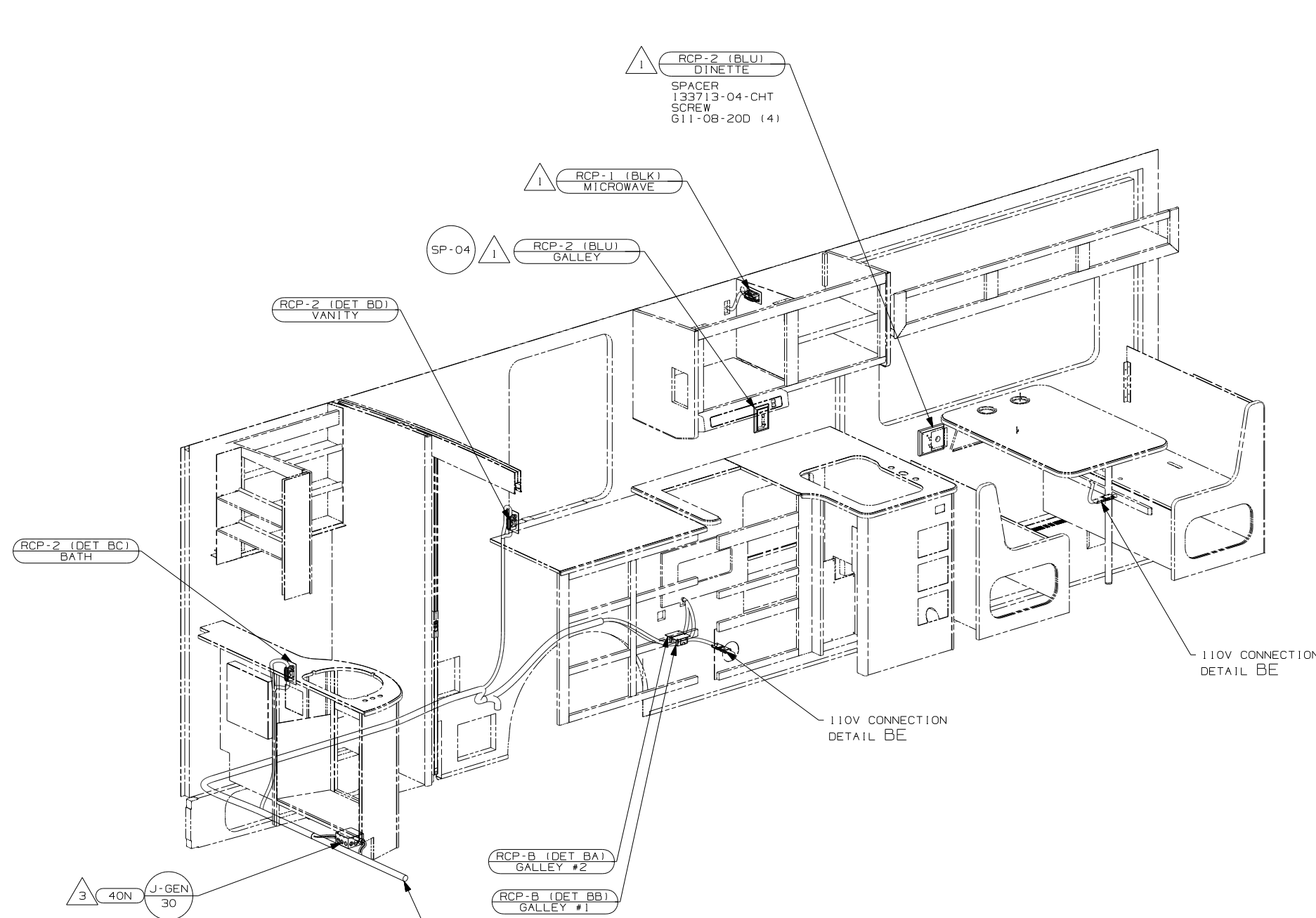
DO NOT SCALE DRAWING

TITLE: WIRING INSTL-BODY, 110V

SHEET 1 of 3 PART NO 155294

REF: 1 8/22/2005

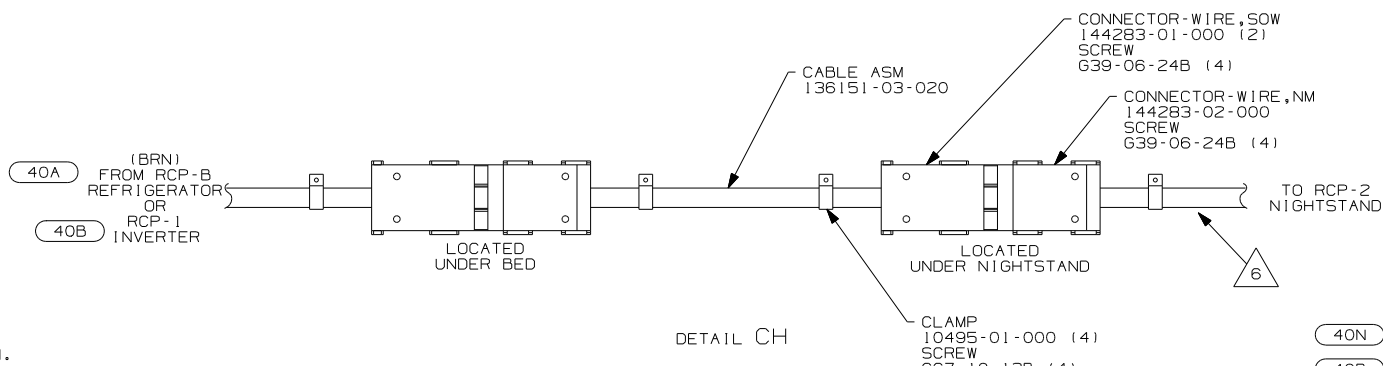
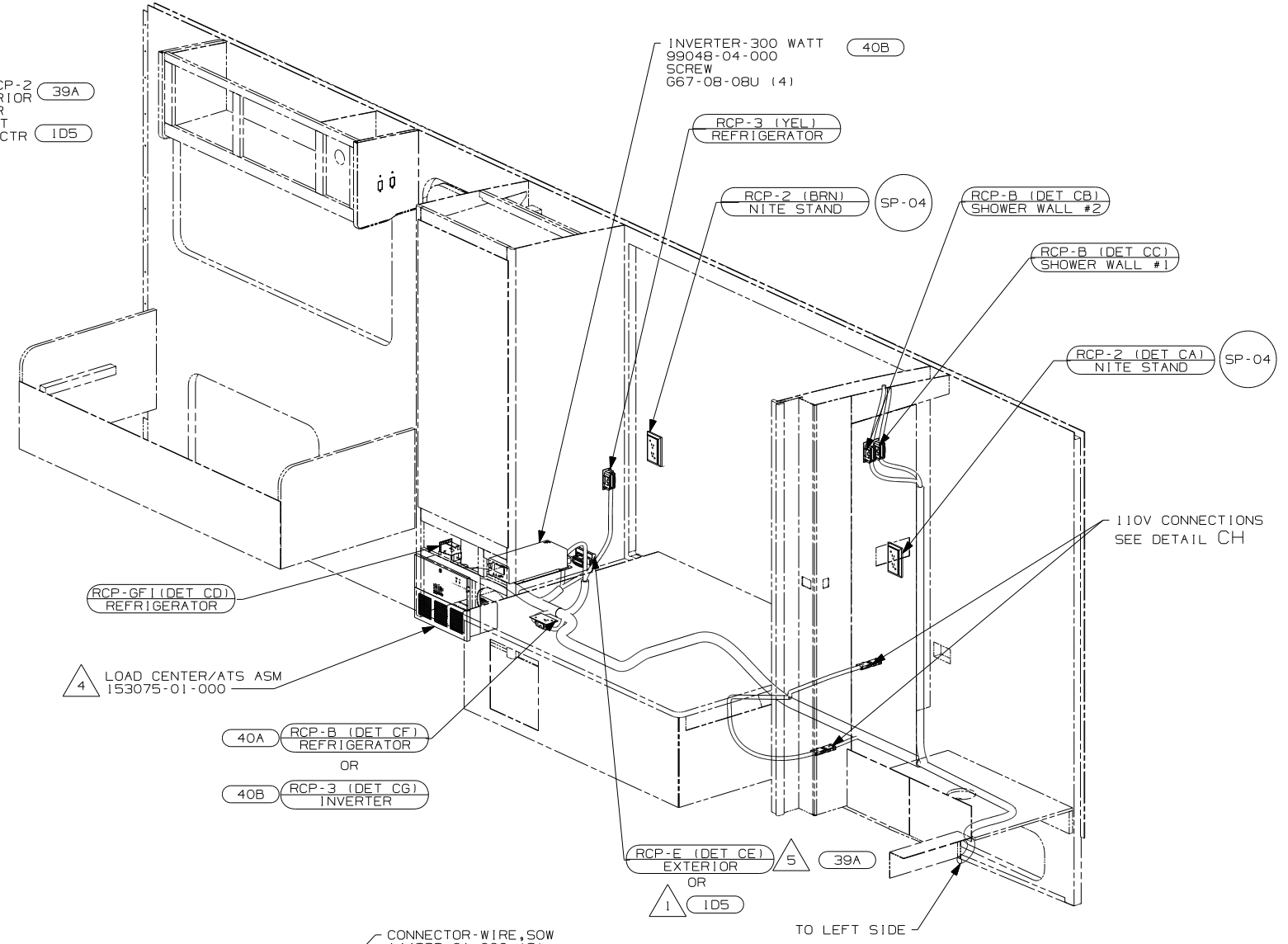
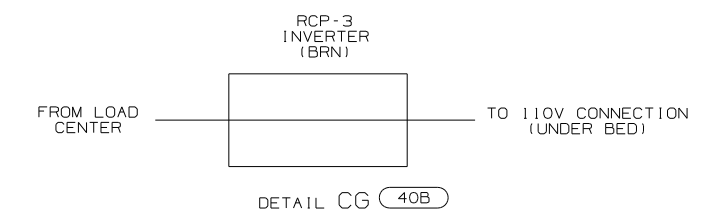
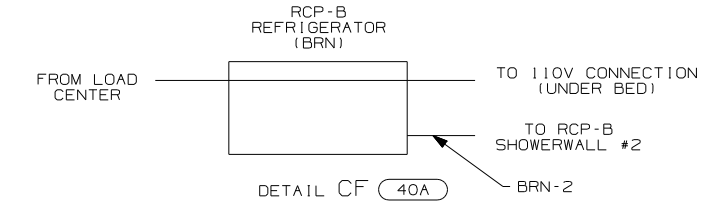
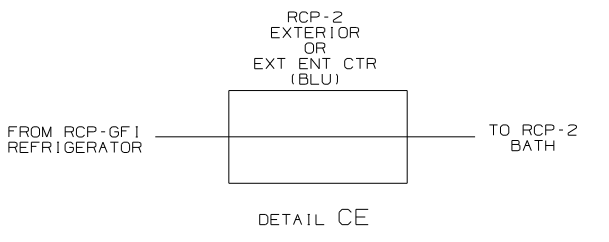
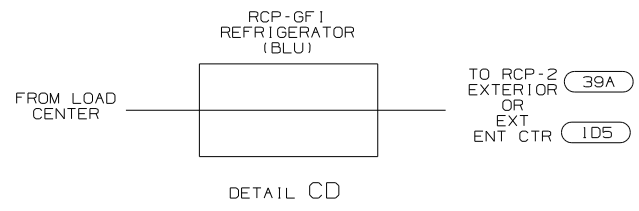
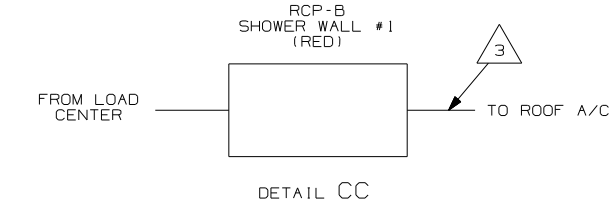
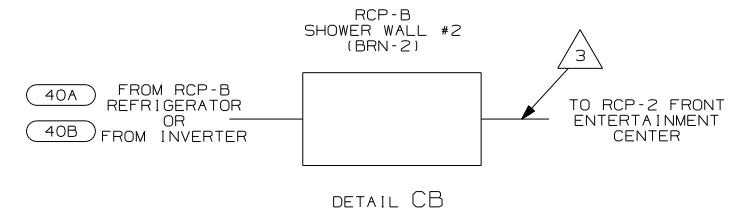
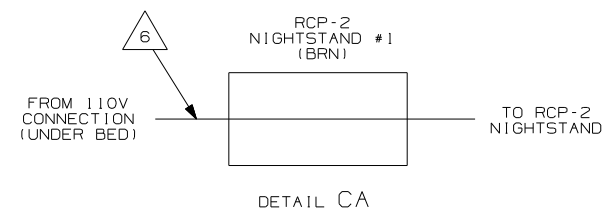
- NOTES:
- 2 FLEX CORD IS PART OF WIRE ASM-CHASSIS.
  - 1 SEE GENERATOR INSTALLATION FOR ADDITIONAL INFORMATION.



- (40N) GEN-4.0KW-ONANGAS-MICROQUIET
- (39A) EXT RECEPTACLE DPLX 120VAC
- (ID5) ENTERTAINMENT CENTR/EXT W/CD
- (I2D) ELECTRICAL SYSTEM 30 AMP
- (265) CODES/STANDARDS-CSA/CMVSS
- (1B1) CODES/STANDARDS USA

- NOTES:
- (3) SEE GENERATOR INSTALLATION FOR ADDITIONAL INFORMATION.
  - (2) FLEXCORD IS PART OF WIRE ASM-CHASSIS.
  - (1) WIRE IN SIDEWALL.

FIRST USED	06 729H
DO NOT SCALE DRAWING	
TITLE: WIRING INSTL-BODY, 110V	
SHEET 2	PART NO 155294



- 6 WIRE IN SIDEWALL.
- 5 NOT USED WITH 1D5.
- 4 SEE LOAD CENTER INSTL FOR ADDITIONAL INFORMATION.
- 3 WIRE ROUTED IN ROOF.
- 2 SEE GENERATOR INSTALLATION FOR ADDITIONAL INFORMATION.
- 1 SEE ENTERTAINMENT CENTER INST FOR ADDITIONAL INFORMATION.

- 39A EXT RECEPTACLE DPLX 120VAC
- 1D5 ENTERTAINMENT CENTR/EXT W/CD
- 12D ELECTRICAL SYSTEM 30 AMP
- 265 CODES/STANDARDS-CSA/CMVSS
- 1B1 CODES/STANDARDS USA

- 40N GEN-4.0KW-ONANGAS-MICROQUIET
- 40B INVERTER-DC/AC, 300 WATT
- 40A INVERTER-DC/AC WITHOUT
- 39A EXT RECEPTACLE DPLX 120VAC

FIRST USED	06 729H
DO NOT SCALE DRAWING	
TITLE	WIRING INSTL-BODY, 110V
SHEET 3	PART NO 155294