



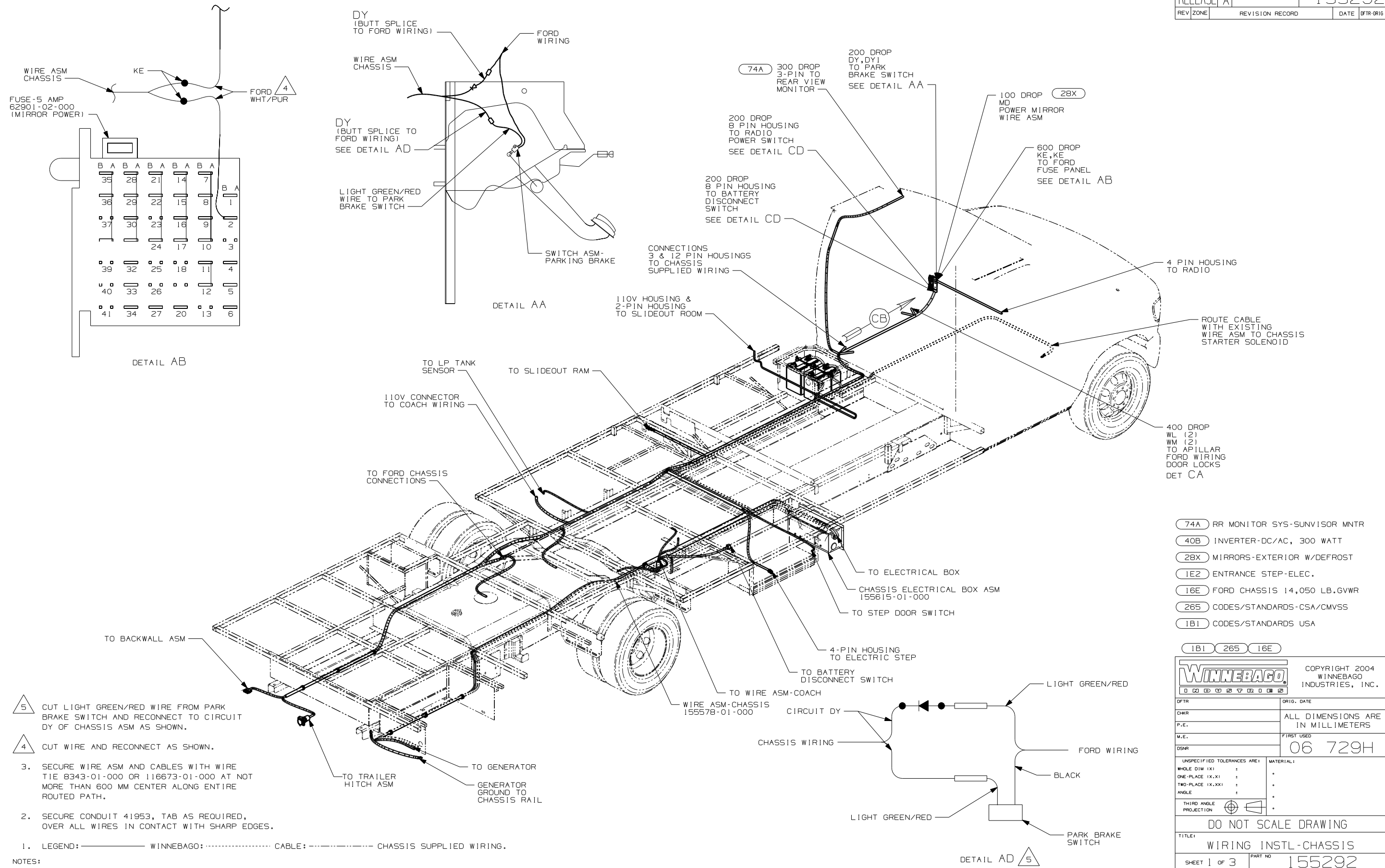
DANGER

Danger of electrical shock, burns or death. Always remove all power sources before attempting any repair, service or diagnostic work. Power can be present from shore power, generator, inverter or battery. All power sources must be disabled and secured before performing any service.



CAUTION

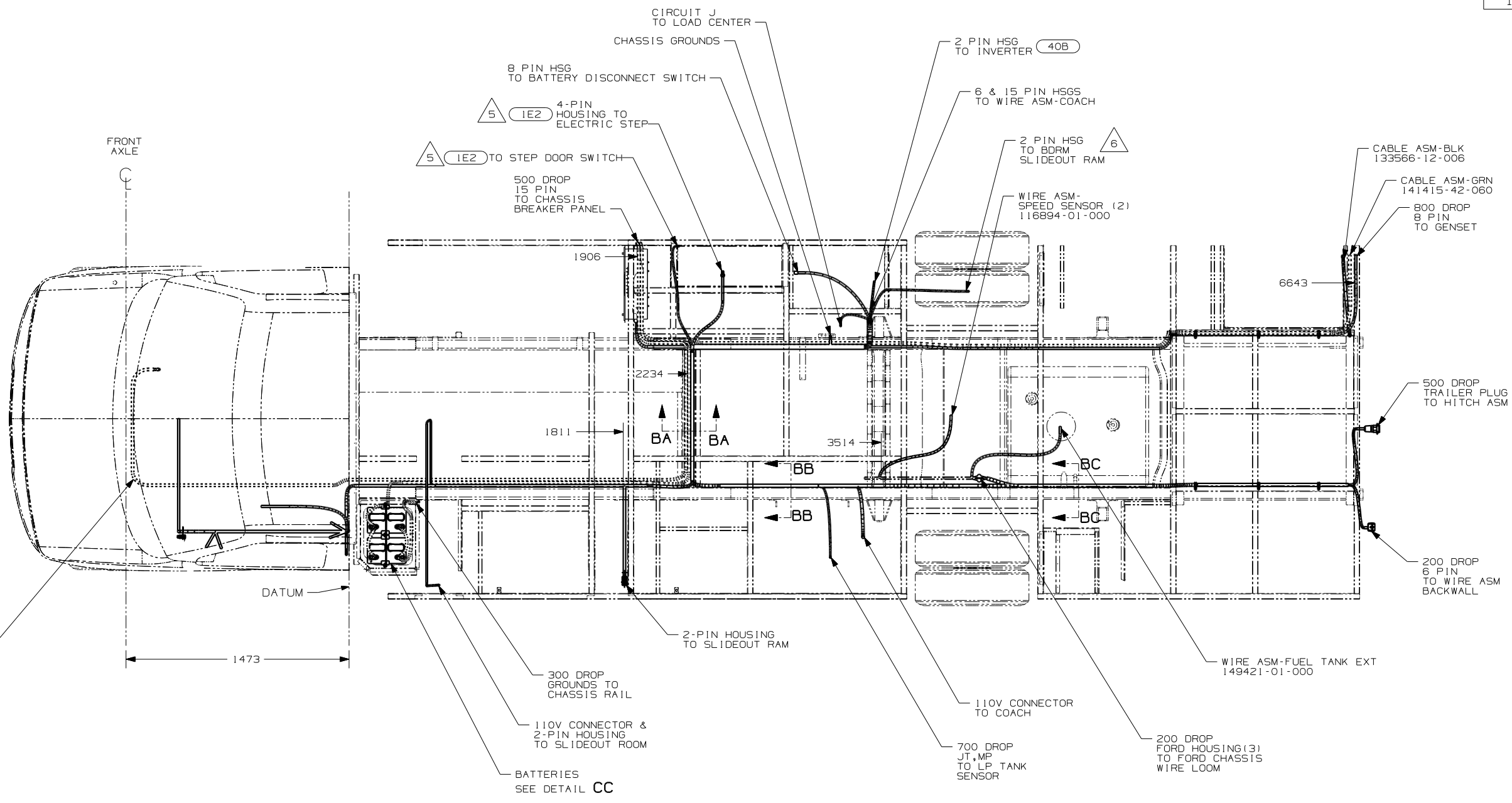
If you lack the skills, tools or equipment to perform diagnostic or repair work leave such work to an authorized Winnebago Industries dealer or other qualified shop.



- 5 CUT LIGHT GREEN/RED WIRE FROM PARK BRAKE SWITCH AND RECONNECT TO CIRCUIT DY OF CHASSIS ASM AS SHOWN.
- 4 CUT WIRE AND RECONNECT AS SHOWN.
3. SECURE WIRE ASM AND CABLES WITH WIRE TIE 8343-01-000 OR 116673-01-000 AT NOT MORE THAN 600 MM CENTER ALONG ENTIRE ROUTED PATH.
2. SECURE CONDUIT 41953, TAB AS REQUIRED, OVER ALL WIRES IN CONTACT WITH SHARP EDGES.
1. LEGEND: — WINNEBAGO: CABLE: - - - - CHASSIS SUPPLIED WIRING.

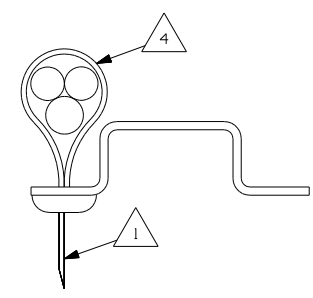
- 74A RR MONITOR SYS-SUNVISOR MNTR
- 40B INVERTER-DC/AC, 300 WATT
- 28X MIRRORS-EXTERIOR W/DEFROST
- 1E2 ENTRANCE STEP-ELEC.
- 16E FORD CHASSIS 14,050 LB.GVWR
- 265 CODES/STANDARDS-CSA/CMVSS
- 1B1 CODES/STANDARDS USA

WINNEBAGO		COPYRIGHT 2004 WINNEBAGO INDUSTRIES, INC.	
DFTR	ORIG. DATE	ALL DIMENSIONS ARE IN MILLIMETERS	
CHKR		FIRST USED 06 729H	
P.E.		UNSPECIFIED TOLERANCES ARE:	
M.E.		WHOLE DIM (X)	:
DSNR		ONE-PLACE (X.X)	:
		TWO-PLACE (X.XX)	:
		ANGLE	:
THIRD ANGLE PROJECTION		MATERIAL:	
DO NOT SCALE DRAWING			
TITLE: WIRING INSTL-CHASSIS			
SHEET 1 of 3	PART NO	155292	
REF:		1 11/14/2005	

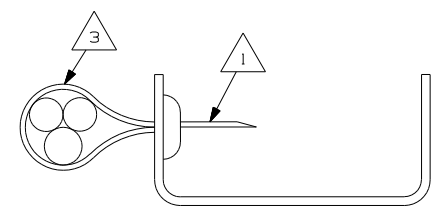


- △6 WIRE ROUTED ABOVE FLOOR.
- △5 SECURE THE DROP BACK TO MAIN WIRE ASM TRUNK WHEN NOT USED.
- △4 WIRES TO BE TIED TO CROSS MEMBER USING EXISTING HOLES.
- △3 WIRES TO BE TIED TO TOP OF RAIL USING EXISTING HOLES.
- △2 WIRES TO BE TIED TO INSIDE OF RAIL USING EXISTING HOLES.
- △1 CUT OFF EXCESS END OF WIRE TIE.

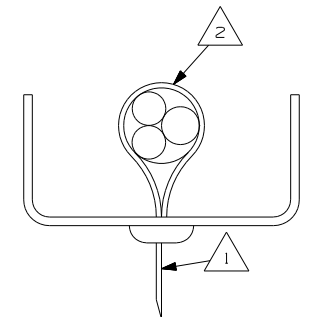
NOTES:



SECTION BA-BA



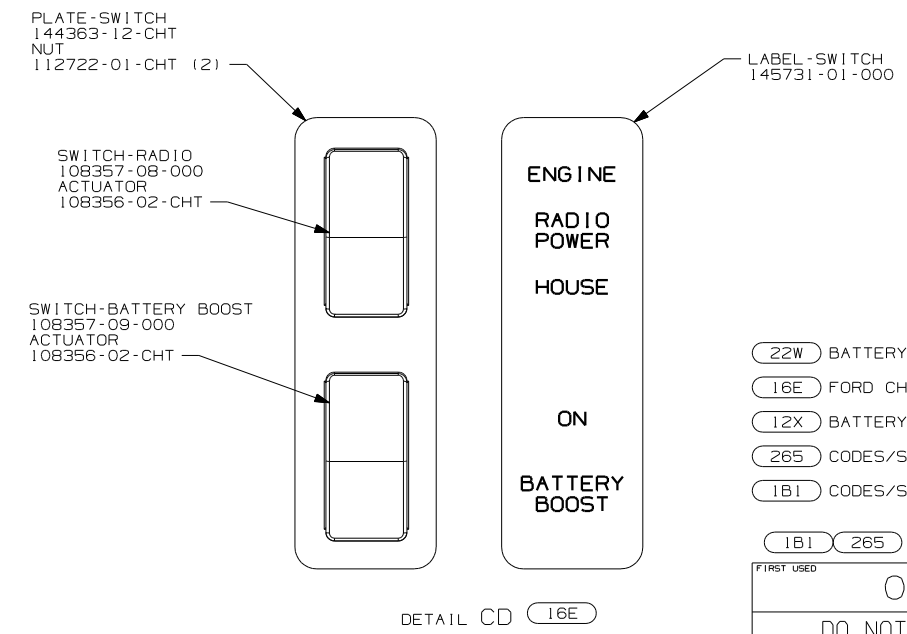
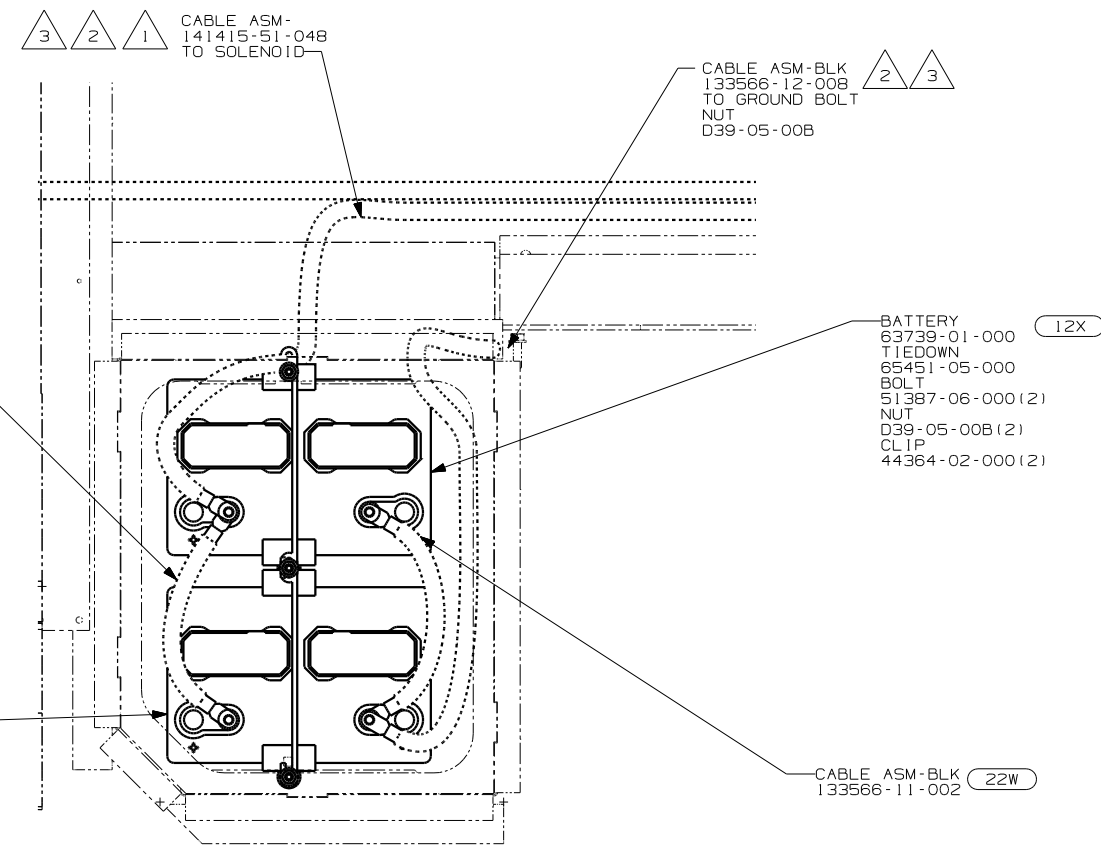
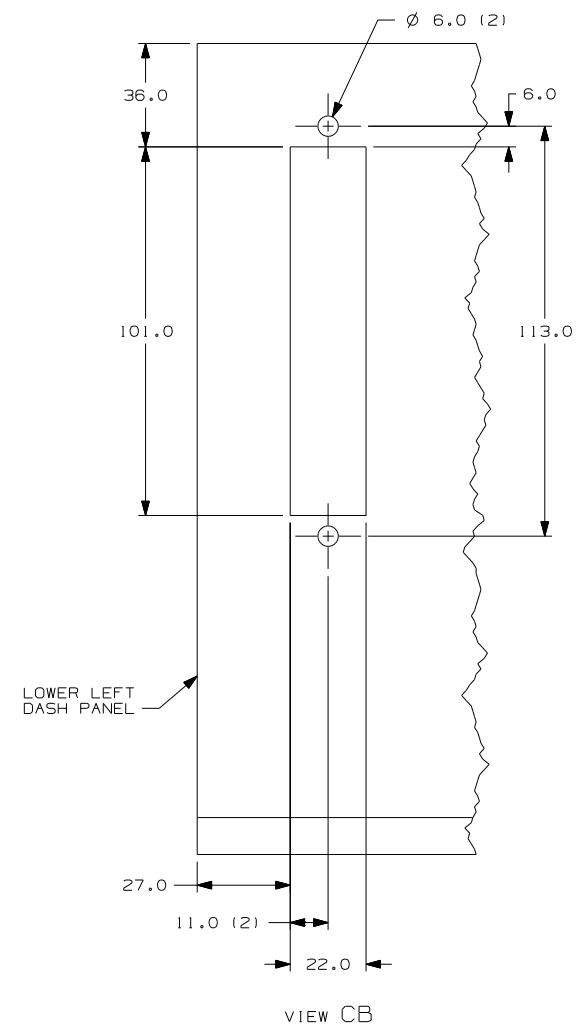
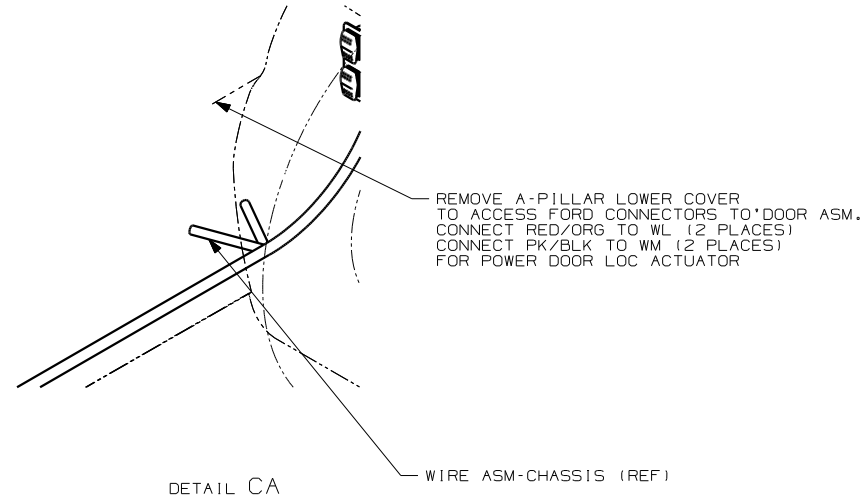
SECTION BB-BB



SECTION BC-BC

- △1E2 ENTRANCE STEP-ELEC.
- △16E FORD CHASSIS 14,050 LB.GVWR
- △265 CODES/STANDARDS-CSA/CMVSS
- △1B1 CODES/STANDARDS USA

FIRST USED	06 729H
TITLE	DO NOT SCALE DRAWING
	WIRING INSTL-CHASSIS
SHEET 2	PART NO 155292



- (22W) BATTERY 63739-01-000 (2)
- TIEDOWN 65451-05-000 (2)
- BOLT 51387-06-000 (3)
- NUT D39-05-00B (3)
- CLIP 44364-02-000 (3)

- (22W) BATTERY-SECOND
- (16E) FORD CHASSIS 14,050 LB.GVWR
- (12X) BATTERY-ONE
- (265) CODES/STANDARDS-CSA/CMVSS
- (1B1) CODES/STANDARDS USA

NOTES:

- 3 WITH (12X) BOTH POSITIVE AND NEGATIVE BATTERY CABLES ARE TO BE TERMINATED ON THE SAME BATTERY. DETAIL CC
- 2 WITH (22W) THE POSITIVE AND NEGATIVE BATTERY CABLES ARE TO BE TERMINATED ON OPPOSITE BATTERIES AS SHOWN IN DETAIL.
- 1 LEAD IS MARKED WITH YELLOW TAPE.

FIRST USED	06 729H
TITLE	DO NOT SCALE DRAWING
	WIRING INSTL-CHASSIS
SHEET 3	PART NO 155292