



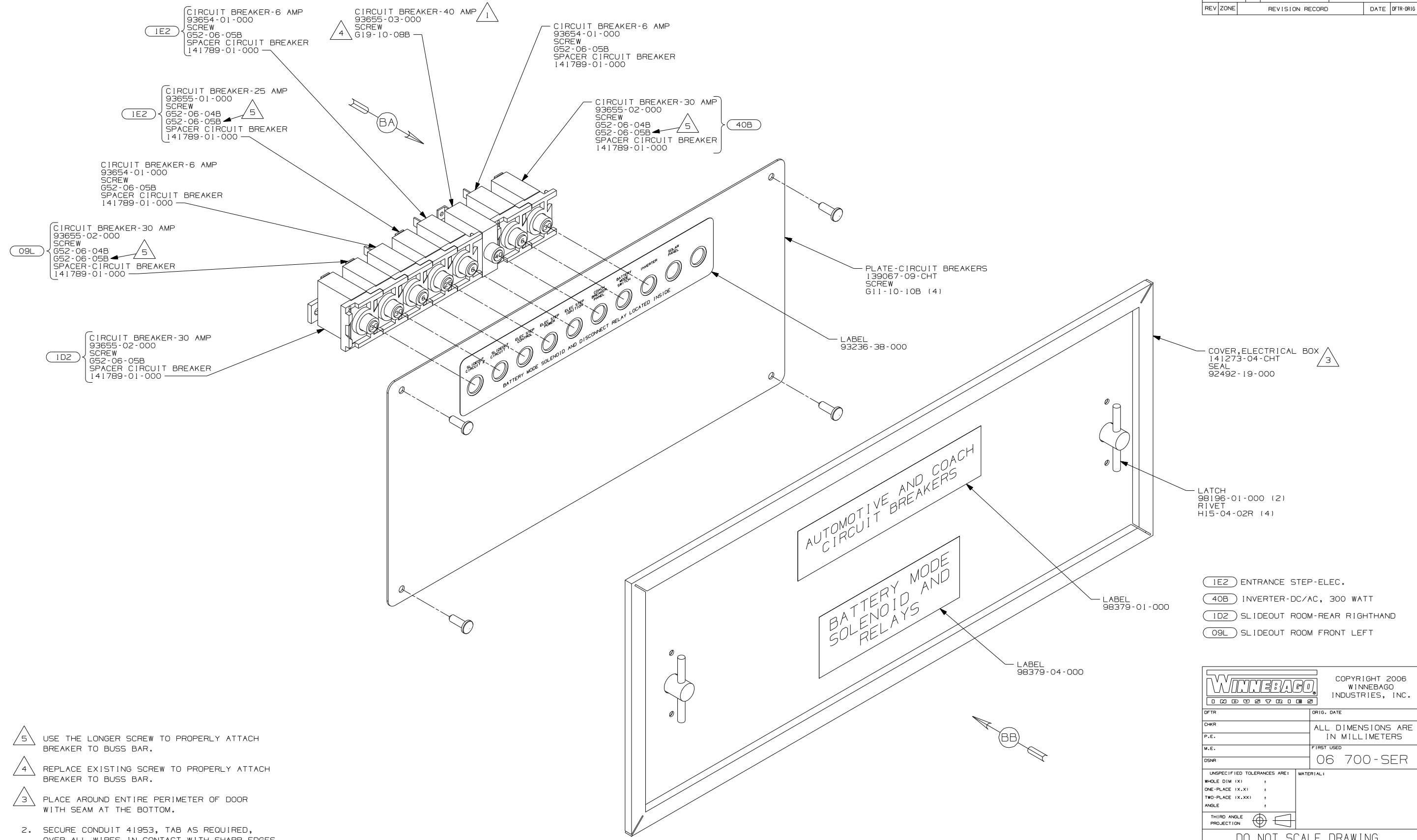
DANGER

Danger of electrical shock, burns or death. Always remove all power sources before attempting any repair, service or diagnostic work. Power can be present from shore power, generator, inverter or battery. All power sources must be disabled and secured before performing any service.



CAUTION

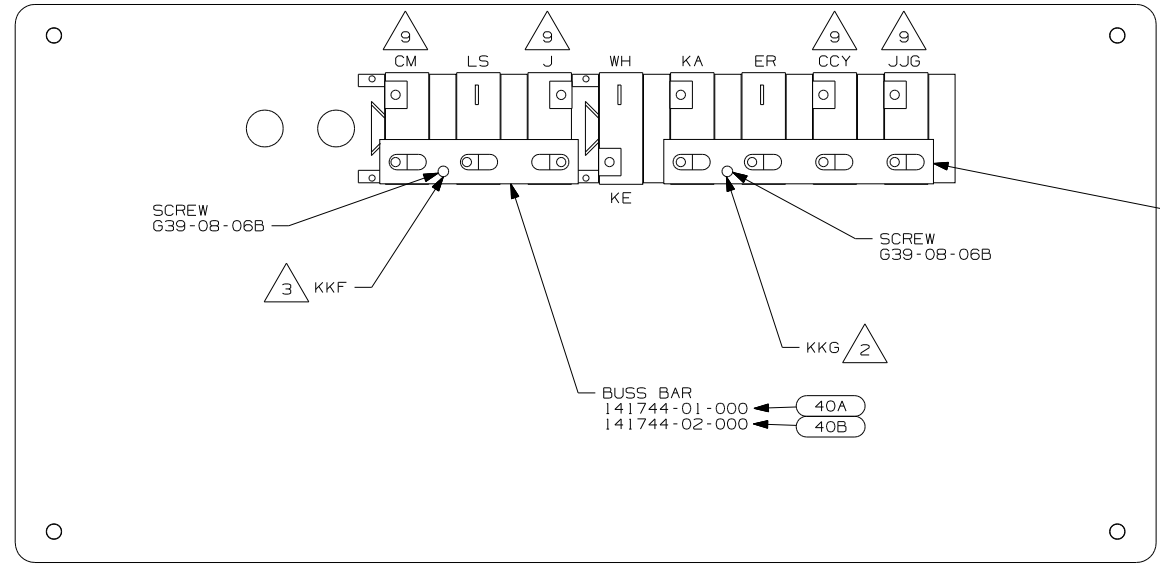
If you lack the skills, tools or equipment to perform diagnostic or repair work leave such work to an authorized Winnebago Industries dealer or other qualified shop.



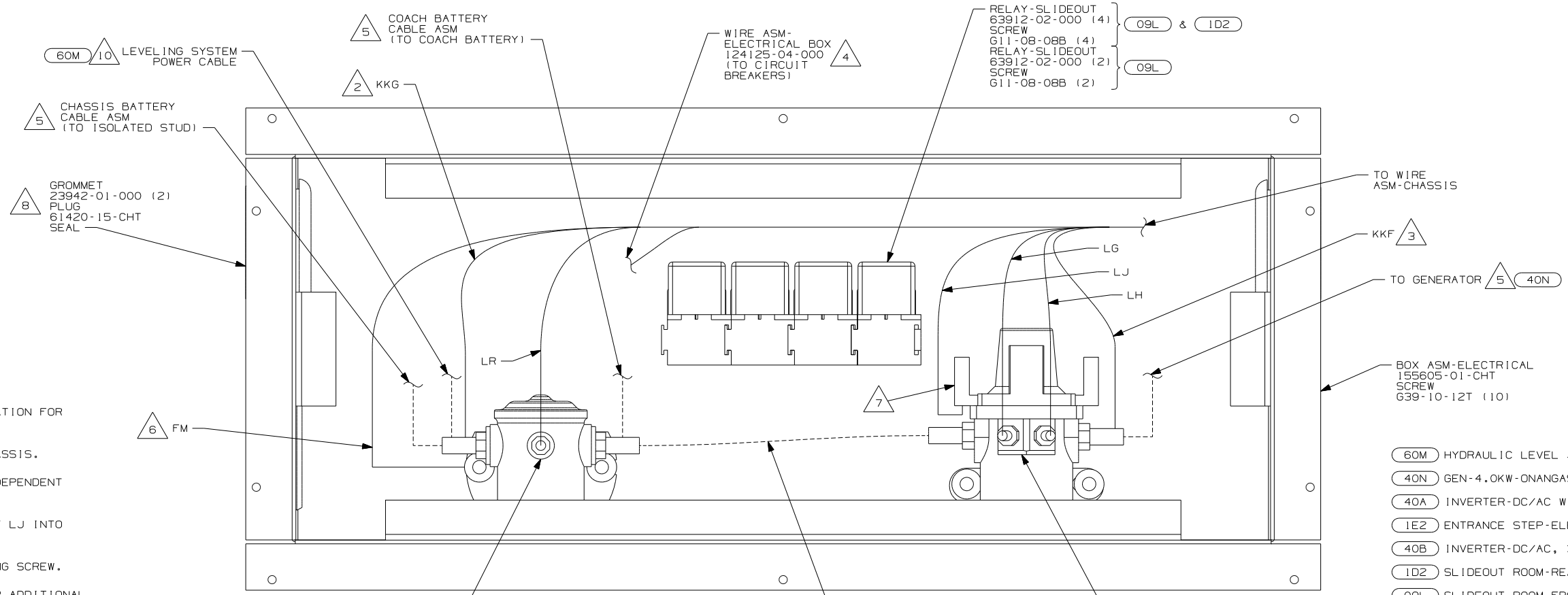
- NOTES:
- 5 USE THE LONGER SCREW TO PROPERLY ATTACH BREAKER TO BUSS BAR.
 - 4 REPLACE EXISTING SCREW TO PROPERLY ATTACH BREAKER TO BUSS BAR.
 - 3 PLACE AROUND ENTIRE PERIMETER OF DOOR WITH SEAM AT THE BOTTOM.
 - 2. SECURE CONDUIT 41953, TAB AS REQUIRED, OVER ALL WIRES IN CONTACT WITH SHARP EDGES.
 - 1 SPACER NOT REQUIRED ON 40 AMP BREAKER.

- 1E2 ENTRANCE STEP-ELEC.
- 40B INVERTER-DC/AC, 300 WATT
- 1D2 SLIDEOUT ROOM-REAR RIGHTHAND
- 09L SLIDEOUT ROOM FRONT LEFT

WINNEBAGO		COPYRIGHT 2006 WINNEBAGO INDUSTRIES, INC.	
DFTR	ORIG. DATE	ALL DIMENSIONS ARE IN MILLIMETERS	
CHKR		FIRST USED	
P.E.		06 700-SER	
M.E.		UNSPECIFIED TOLERANCES ARE:	
DSNR		MATERIAL:	
		WHOLE DIM (X)	:
		ONE-PLACE (X.X)	:
		TWO-PLACE (X.XX)	:
		ANGLE	:
		THIRD ANGLE PROJECTION	
DO NOT SCALE DRAWING			
TITLE: CHASSIS ELECTRICAL BOX ASM			
SHEET 1 OF 2	PART NO	155615	REV
REF:	1 6/16/2006		



VIEW BA \triangle 4



VIEW BB \triangle 4

- \triangle 10 SEE LEVELING SYSTEM INSTALLATION FOR ADDITIONAL INFORMATION
- \triangle 9 CIRCUIT IS FROM WIRE ASM-CHASSIS.
- \triangle 8 LOCATION OF GROMMET & PLUG DEPENDENT ON LOCATION OF BOX.
- \triangle 7 INSERT TERMINAL FROM CIRCUIT LJ INTO FUSE HOLDER SOCKET ON RELAY.
- \triangle 6 SECURE WITH SOLENOID MOUNTING SCREW.
- \triangle 5 SEE WIRING INSTL-CHASSIS FOR ADDITIONAL INFORMATION.
- \triangle 4 TAPE BACK UNUSED WIRES TO HARNESS.
- \triangle 3 WIRE IS MARKED WITH YELLOW TAPE.
- \triangle 2 WIRE IS MARKED WITH PURPLE TAPE.

NOTES: 1. LEGEND: — WINNEBAGO: - - - - - CABLE: - - - - - CHASSIS SUPPLIED WIRING.

- \circ 60M HYDRAULIC LEVEL JACKS-AUTO
- \circ 40N GEN-4.0KW-ONANGAS-MICROQUIET
- \circ 40A INVERTER-DC/AC WITHOUT
- \circ 1E2 ENTRANCE STEP-ELEC.
- \circ 40B INVERTER-DC/AC, 300 WATT
- \circ 1D2 SLIDEOUT ROOM-REAR RIGHTHAND
- \circ 09L SLIDEOUT ROOM FRONT LEFT

FIRST USED	06 700-SER	
TITLE	DO NOT SCALE DRAWING	
	CHASSIS ELECTRICAL BOX ASM	
SHEET 2	PART NO 155615	REV