



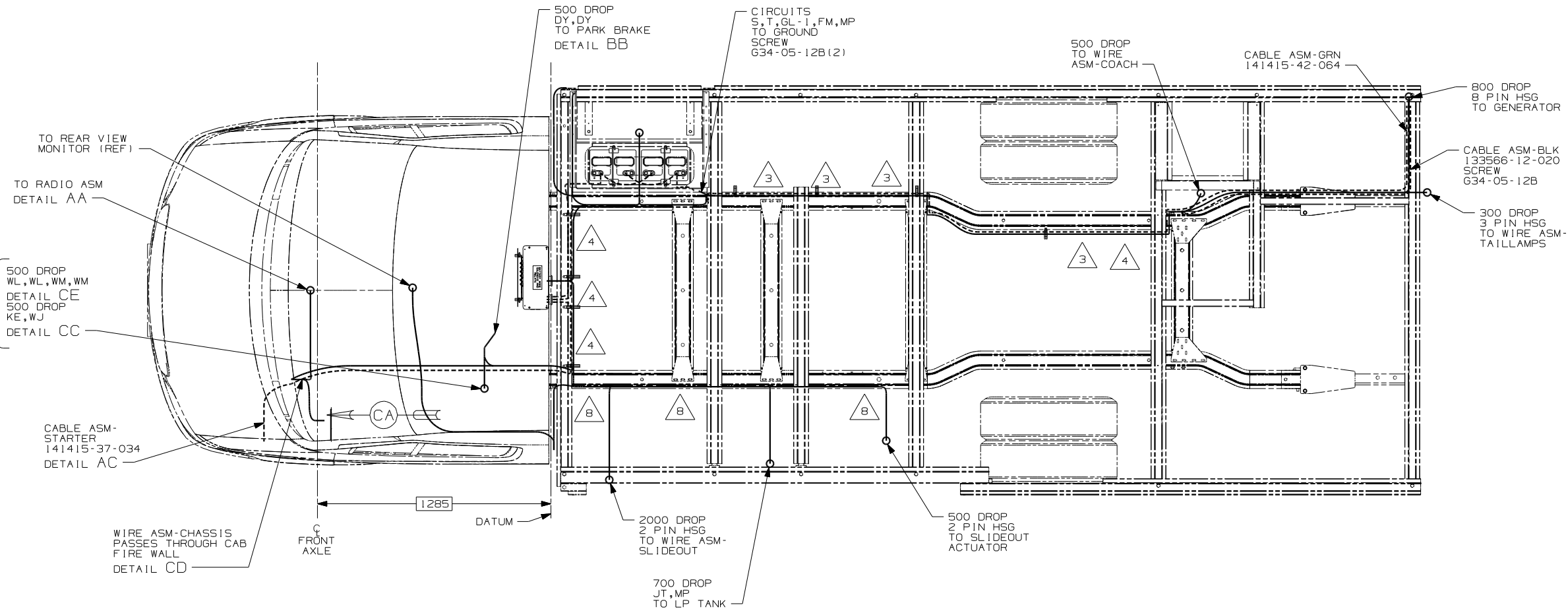
DANGER

Danger of electrical shock, burns or death. Always remove all power sources before attempting any repair, service or diagnostic work. Power can be present from shore power, generator, inverter or battery. All power sources must be disabled and secured before performing any service.



CAUTION

If you lack the skills, tools or equipment to perform diagnostic or repair work leave such work to an authorized Winnebago Industries dealer or other qualified shop.

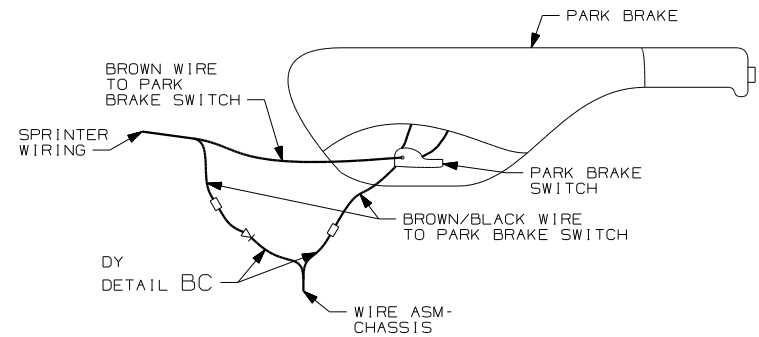
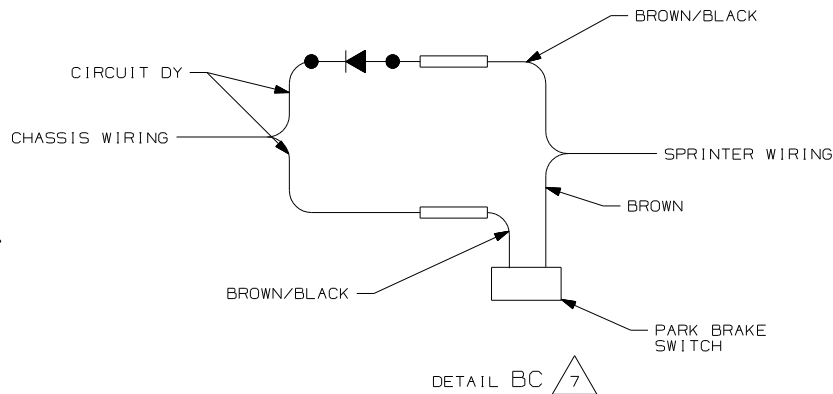


- 8 TIE-WIRE MOUNT 92909-01-000, TIE WIRE 8343-02-000, RIVET 118626-01-CHT. USE EXISTING 6mm HOLES IN SPRINTER FRAME RAILS.
- 7 CUT BROWN/BLACK WIRE FROM PARK BRAKE SWITCH AND RECONNECT TO CIRCUIT DY OF WIRE ASM-CHASSIS AS SHOWN.
- 6 ROUTE WIRES THROUGH CAB FLOOR UNDER DRIVERS SEAT PEDESTAL.
- 5 ROUTE MG, MD WIRES THROUGH U-CHANNELS BETWEEN SEAT PEDESTALS.
- 4 CLAMP 83610-03-000, SCREW 639-08-12B. DO NOT DRILL OR SCREW INTO SPRINTER FRAME. USE ALUMINUM RISERS.
- 3 CLAMP 83610-03-000, RIVET 118626-01-CHT. USE EXISTING 6mm HOLES IN SPRINTER FRAME RAILS.

2. SECURE CONDUIT 41953, TAB AS REQUIRED, OVER ALL WIRES IN CONTACT WITH SHARP EDGES.

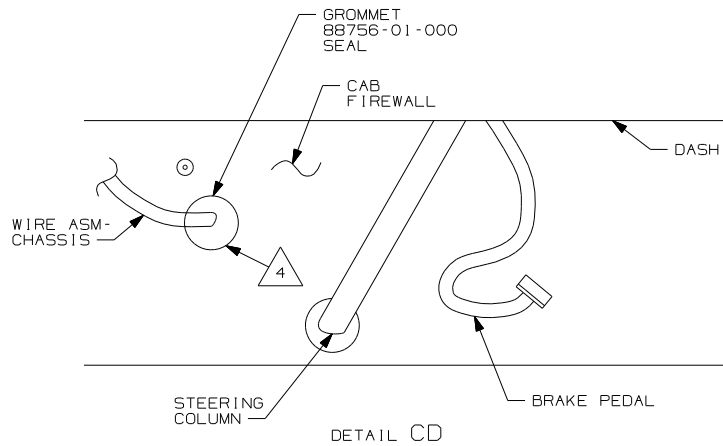
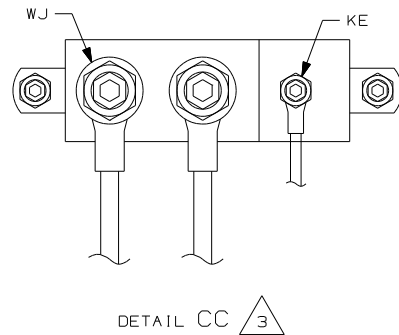
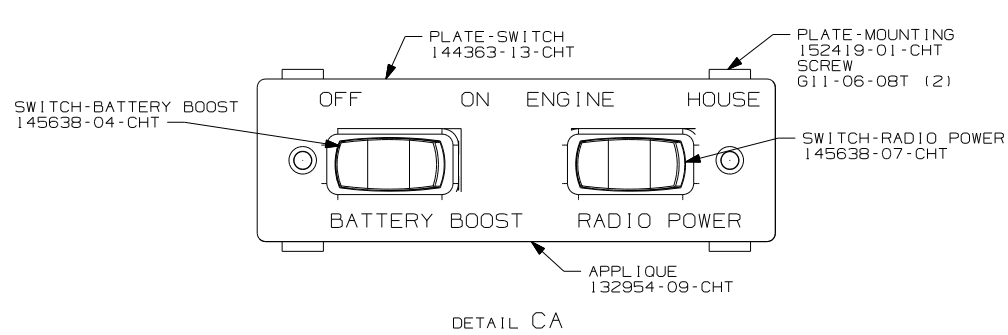
1. LEGEND: — WINNEBAGO: - - - - - CABLE: - - - - - CHASSIS SUPPLIED WIRING.

NOTES:

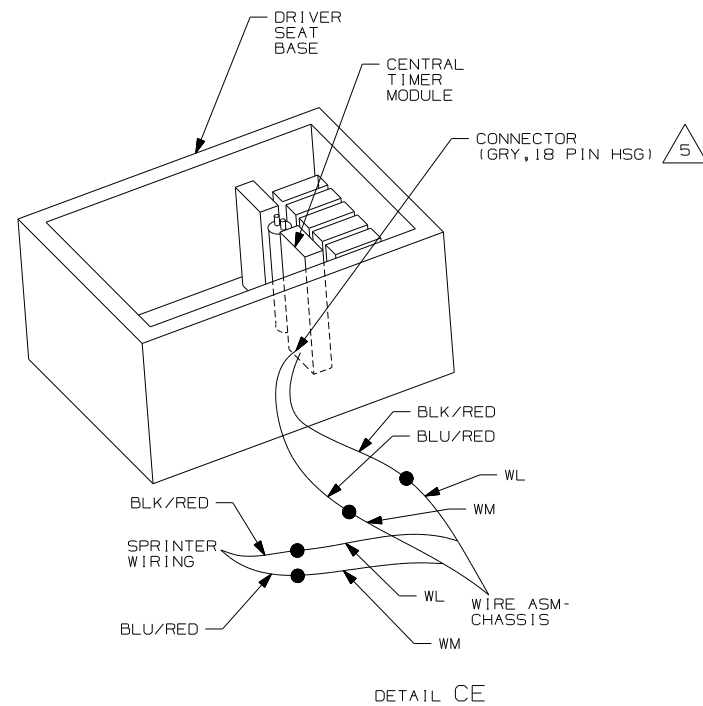
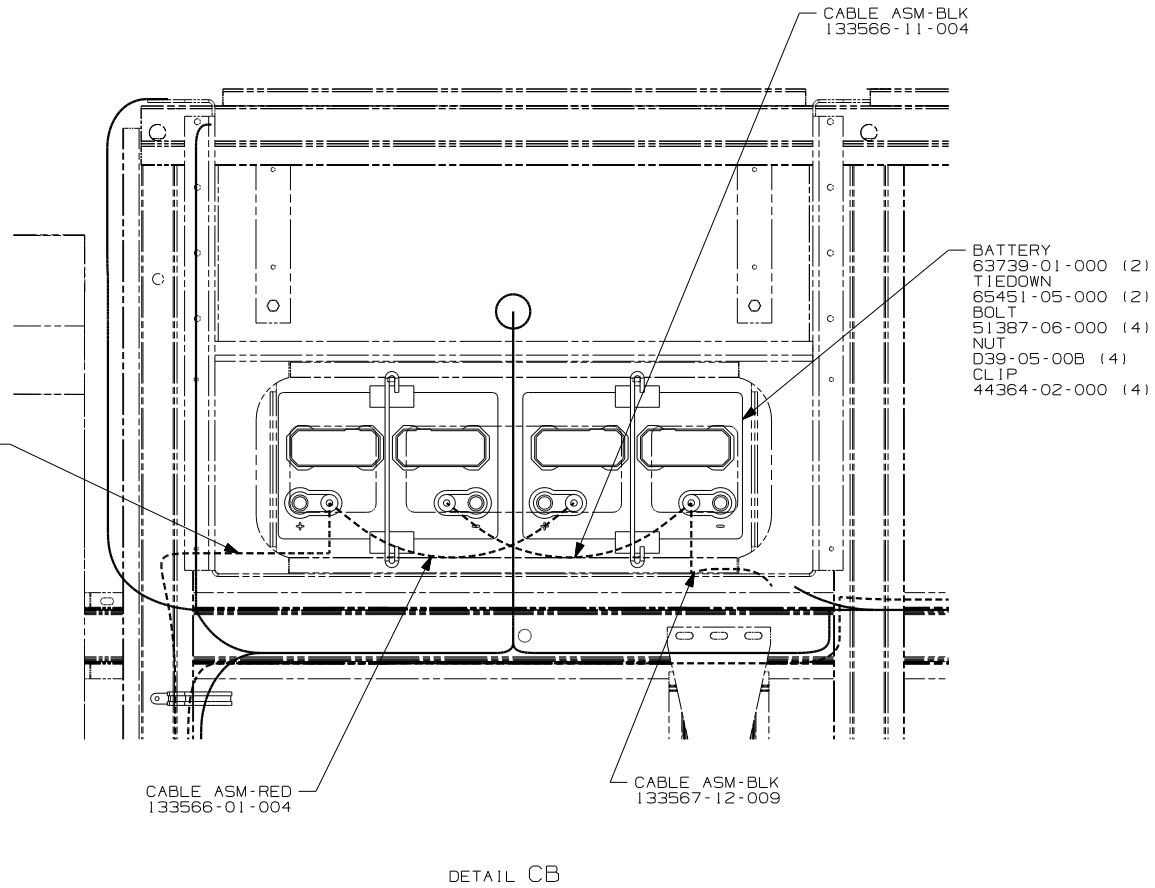


- 1KA DODGE - 10,200 LB. GVWR
- 265 CODES/STANDARDS-CSA/CMVSS
- 1B1 CODES/STANDARDS USA

| | |
|------------|----------------------|
| FIRST USED | 06 523H |
| TITLE | DO NOT SCALE DRAWING |
| | WIRING INSTL-CHASSIS |
| SHEET 2 | PART NO 151356 |



CABLE ASM-YEL
141415-52-020



- 5 FIND THE GRY, 18 PIN CONNECTOR THAT PLUGS INTO THE CENTRAL TIMER MODULE UNDER THE DRIVERS SEAT AND SPLICE THE WM CIRCUIT INTO THE BLU/RED WIRE AND SPLICE THE WL CIRCUIT INTO THE BLK/RED WIRE.
- 4 REMOVE 30MM PLUG IN FIREWALL UNDER DASH. ROUTE WIRE ASM-CHASSIS FROM ENGINE COMPARTMENT THROUGH FIREWALL INTO CAB.
- 3 CONNECTION POINT IS LOCATED UNDER DRIVERS SEAT.
2. SECURE CONDUIT 41953, TAB AS REQUIRED, OVER ALL WIRES IN CONTACT WITH SHARP EDGES.
1. LEGEND: — WINNEBAGO: - - - - - CABLE: - - - - - CHASSIS SUPPLIED WIRING.

NOTES:

1KA DODGE - 10,200 LB. GVWR
265 CODES/STANDARDS-CSA/CMVSS
1B1 CODES/STANDARDS USA

1B1 265 1KA

FIRST USED 06 523H
DO NOT SCALE DRAWING
TITLE: WIRING INSTL-CHASSIS
SHEET 3 PART NO 151356