



DANGER

Danger of electrical shock, burns or death. Always remove all power sources before attempting any repair, service or diagnostic work. Power can be present from shore power, generator, inverter or battery. All power sources must be disabled and secured before performing any service.

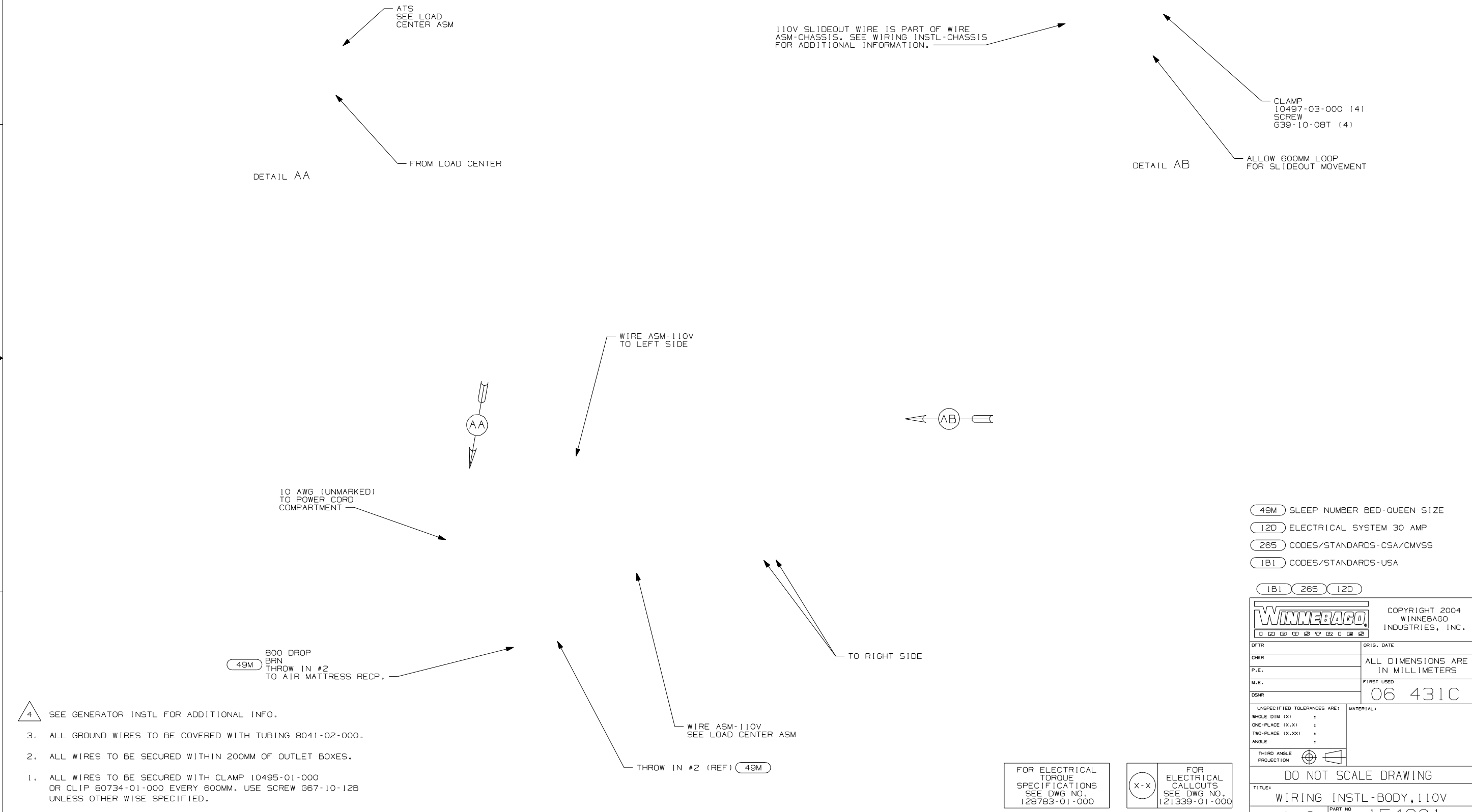


CAUTION

If you lack the skills, tools or equipment to perform diagnostic or repair work leave such work to an authorized Winnebago Industries dealer or other qualified shop.

DRAWING NO.	FEATURE
154601-01	-----
154601-11	(1B1) (12D)
154601-15	(265) (12D)

RELEASE	REV DATE A	DWG NO 154601
REV ZONE	REVISION RECORD	DATE DFR-0R16



- 4 SEE GENERATOR INSTL FOR ADDITIONAL INFO.
3. ALL GROUND WIRES TO BE COVERED WITH TUBING 8041-02-000.
2. ALL WIRES TO BE SECURED WITHIN 200MM OF OUTLET BOXES.
1. ALL WIRES TO BE SECURED WITH CLAMP 10495-01-000 OR CLIP 80734-01-000 EVERY 600MM. USE SCREW G67-10-12B UNLESS OTHER WISE SPECIFIED.

- (49M) SLEEP NUMBER BED-QUEEN SIZE
- (12D) ELECTRICAL SYSTEM 30 AMP
- (265) CODES/STANDARDS-CSA/CMVSS
- (1B1) CODES/STANDARDS-USA

(1B1) (265) (12D)

WINNEBAGO COPYRIGHT 2004
WINNEBAGO
INDUSTRIES, INC.

DFTR	ORIG. DATE
CHKR	ALL DIMENSIONS ARE IN MILLIMETERS
P.E.	
M.E.	FIRST USED
DSNR	06 431C

UNSPECIFIED TOLERANCES ARE: MATERIAL:

WHOLE DIM (X)	:	
ONE-PLACE (X.X)	:	
TWO-PLACE (X.XX)	:	
ANGLE	:	

THIRD ANGLE PROJECTION

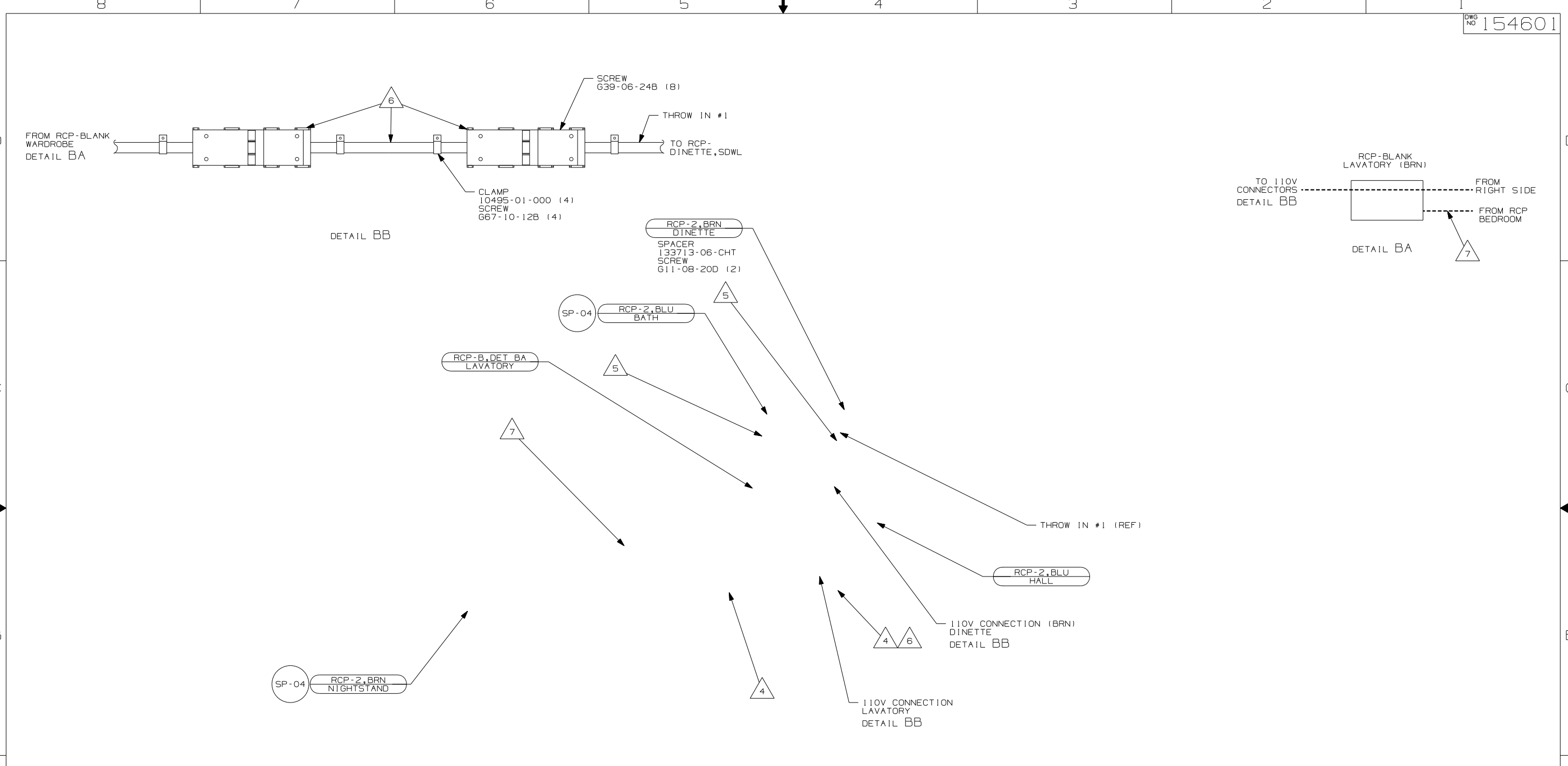
DO NOT SCALE DRAWING

TITLE: WIRING INSTL-BODY, 110V

SHEET 1 OF 3 PART NO 154601

REF: 1 11/8/2005

FOR ELECTRICAL TORQUE SPECIFICATIONS SEE DWG NO. 128783-01-000	(X-X)	FOR ELECTRICAL CALLOUTS SEE DWG NO. 121339-01-000
--	-------	--



- △ 7 WIRE ROUTED IN SIDEWALL.
- △ 6 FLEX CORD & 110V CONNECTORS ARE PART OF WIRE ASM-CHASSIS.
- △ 5 ROUTE WIRE THRU SIDEWALL.
- △ 4 WIRES ROUTED UNDER FLOOR.

3. ALL GROUND WIRES TO BE COVERED WITH TUBING 8041-02-000.
2. ALL WIRES TO BE SECURED WITHIN 200MM OF OUTLET BOXES.
1. ALL WIRES TO BE SECURED WITH CLAMP 10495-01-000 OR CLIP 80734-01-000 EVERY 600MM. USE SCREW G67-10-12B UNLESS OTHER WISE SPECIFIED.

NOTES:

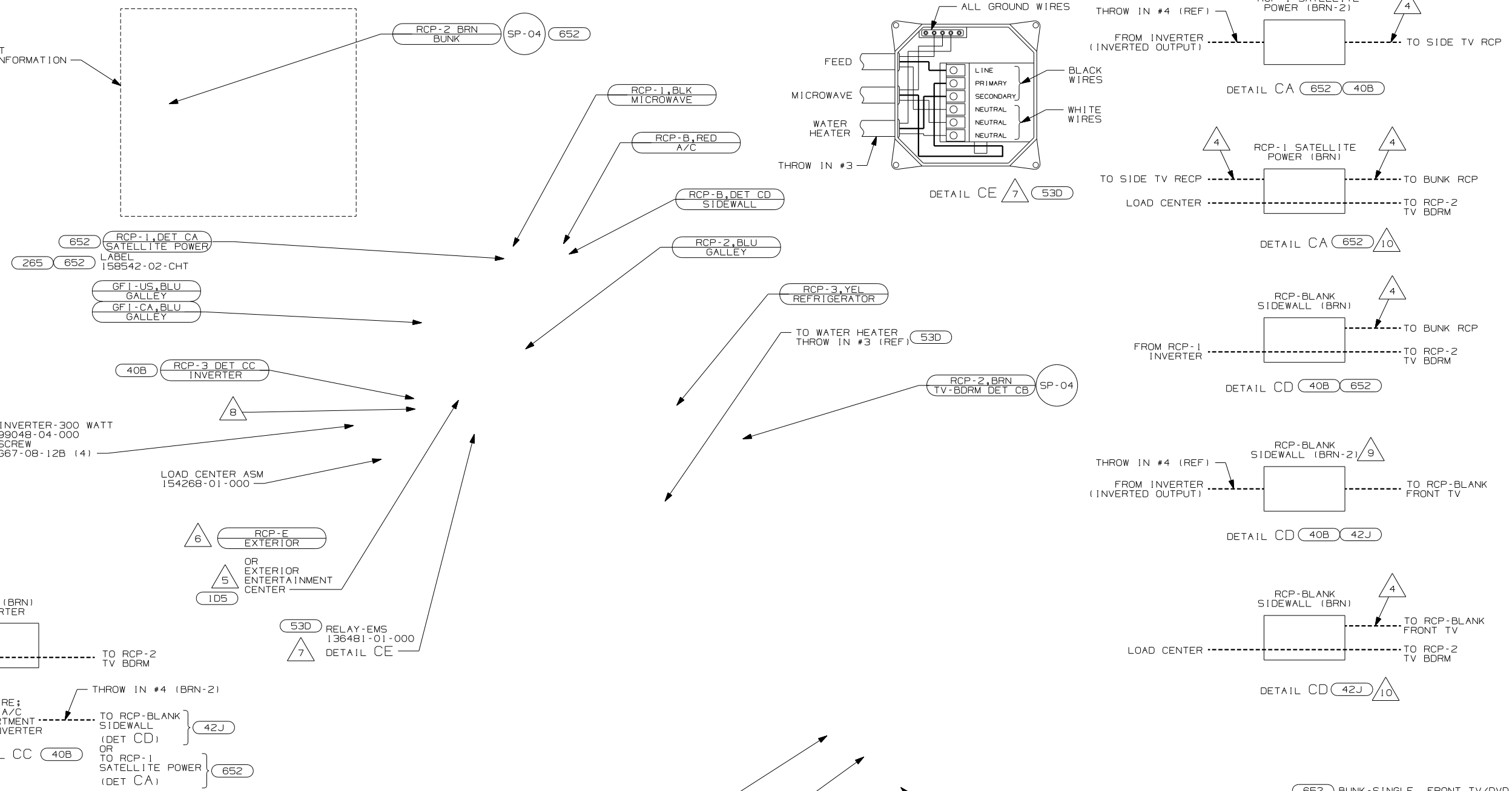
- 12D ELECTRICAL SYSTEM 30 AMP
- 265 CODES/STANDARDS-CSA/CMVSS
- 1B1 CODES/STANDARDS-USA

FIRST USED	06 431C
DO NOT SCALE DRAWING	
TITLE:	WIRING INSTL-BODY, 110V
SHEET 2	PART NO 154601

FOR ELECTRICAL TORQUE SPECIFICATIONS SEE DWG NO. 128783-01-000

FOR ELECTRICAL CALLOUTS SEE DWG NO. 121339-01-000

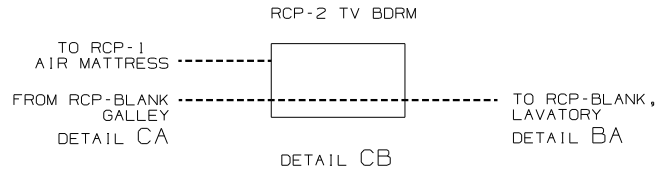
SEE WIRING INSTL-TV FRONT OR SIDE FOR ADDITIONAL INFORMATION



- 10 WITHOUT 40B .
- 9 BRN LOOP NOT USED. TAPE BACK TO HARNESS.
- 8 WITHOUT 40B BRN LOOP IS NOT USED. TAPE BACK TO HARNESS.
- 7 EMS RELAY IS WIRED IN TO BLACK CIRCUIT BY WIRE PREP.
- 6 NOT USED WITH 1D5
- 5 SEE ENTERTAINMENT CENTER COMPLETE FOR ADDITIONAL INFORMATION.
- 4 WIRES INTEGRAL TO SIDEWALL.
- 3 ROUTE WIRES UNDER FLOOR.

2. ALL WIRES TO BE SECURED WITHIN 200MM OF OUTLET BOXES.
1. ALL WIRES TO BE SECURED WITH CLAMP 10495-01-000 OR CLIP 80734-01-000 EVERY 600MM. USE SCREW 667-10-12B UNLESS OTHERWISE SPECIFIED.

NOTES:



FOR ELECTRICAL TORQUE SPECIFICATIONS SEE DWG NO. 128783-01-000

FOR ELECTRICAL CALLOUTS SEE DWG NO. 121339-01-000

- 652 BUNK-SINGLE, FRONT TV/DVD
- 40B INVERTER-DC/AC, 300 WATT
- 49M SLEEP NUMBER BED-QUEEN SIZE
- 53D WTR HTR-6GAL/ELE/LP/MOTORAID
- 1D5 ENTERTAINMENT CENTR/EXT W/CD
- 12D ELECTRICAL SYSTEM 30 AMP
- 265 CODES/STANDARDS-CSA/CMVSS
- 1B1 CODES/STANDARDS-USA

FIRST USED	
06 431C	
DO NOT SCALE DRAWING	
TITLE:	
WIRING INSTL-BODY, 110V	
SHEET 3	PART NO
	154601