



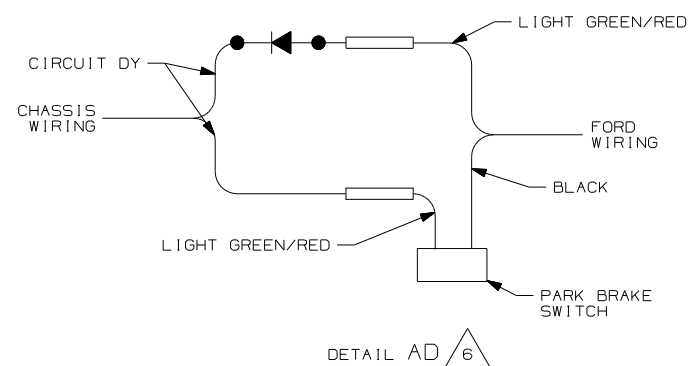
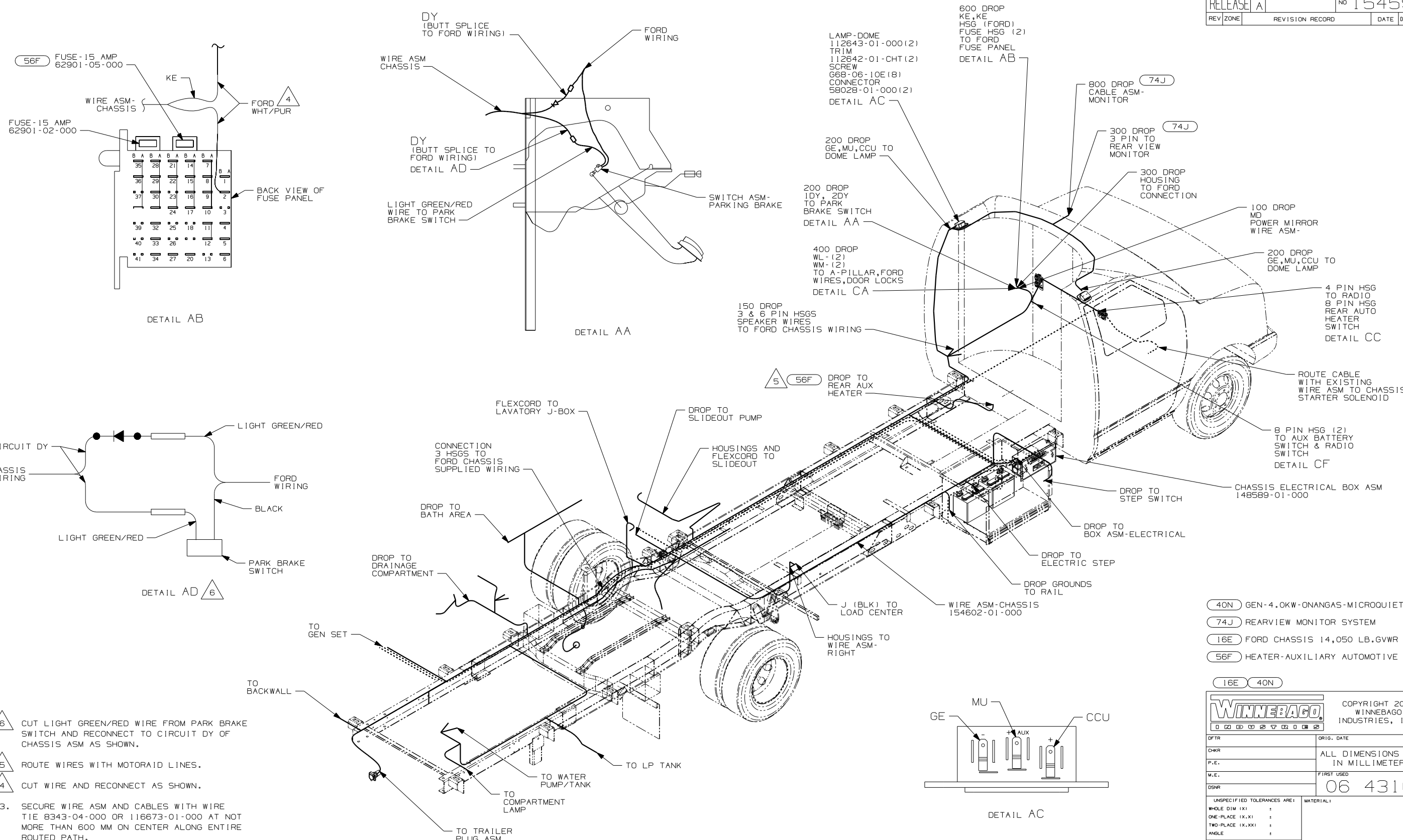
**DANGER**

**Danger of electrical shock, burns or death.** Always remove all power sources before attempting any repair, service or diagnostic work. Power can be present from shore power, generator, inverter or battery. All power sources must be disabled and secured before performing any service.



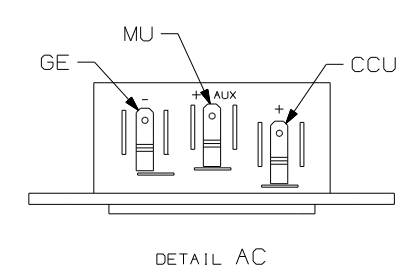
**CAUTION**

If you lack the skills, tools or equipment to perform diagnostic or repair work leave such work to an authorized Winnebago Industries dealer or other qualified shop.



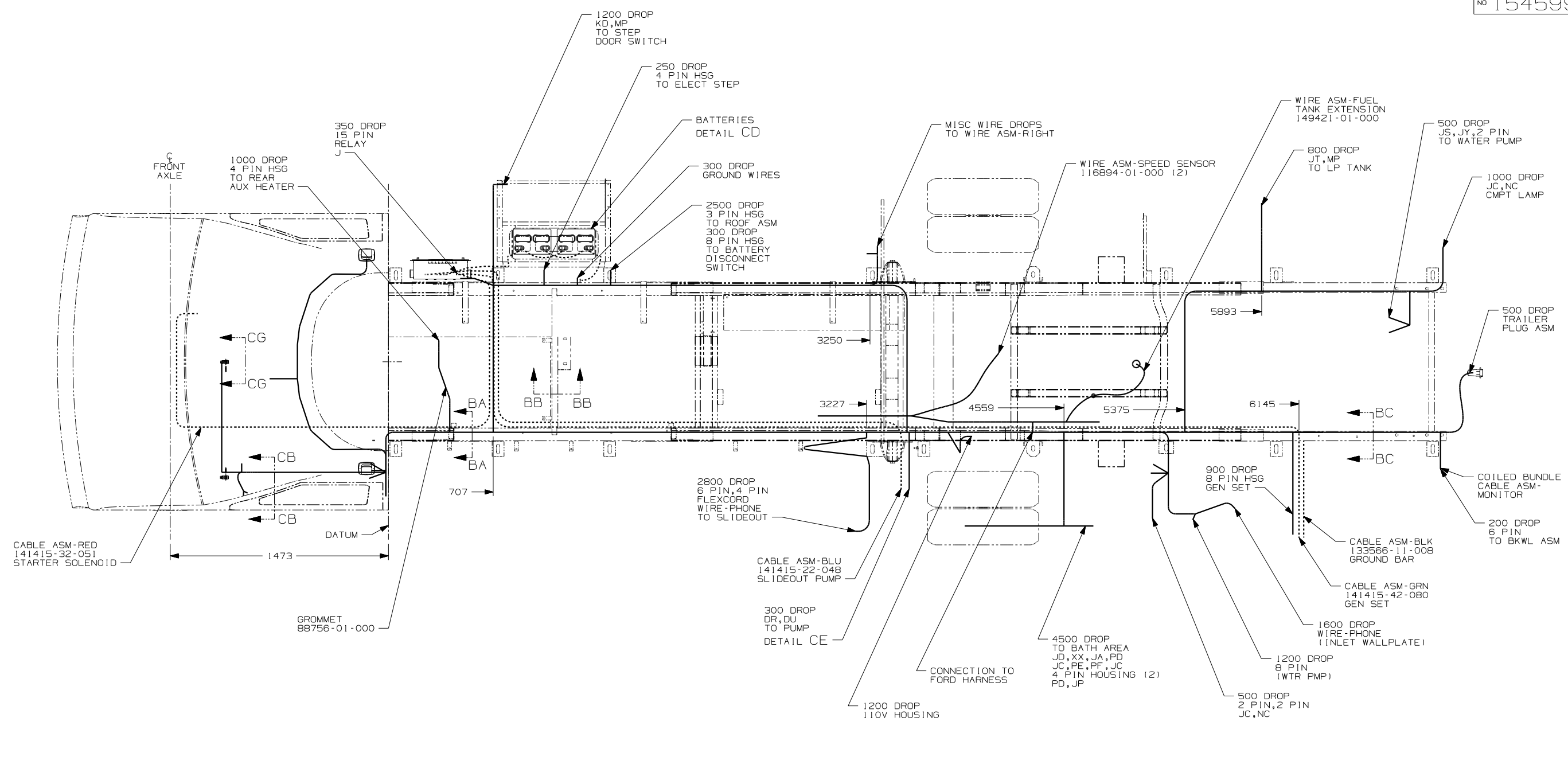
- NOTES:**
- LEGEND: — WINNEBAGO; ..... CABLE; - - - - - CHASSIS SUPPLIED WIRING.
  - SECURE CONDUIT 41953, TAB AS REQUIRED, OVER ALL WIRES IN CONTACT WITH SHARP EDGES.
  - SECURE WIRE ASM AND CABLES WITH WIRE TIE 8343-04-000 OR 116673-01-000 AT NOT MORE THAN 600 MM ON CENTER ALONG ENTIRE ROUTED PATH.
  - CUT WIRE AND RECONNECT AS SHOWN.
  - ROUTE WIRES WITH MOTORAID LINES.
  - CUT LIGHT GREEN/RED WIRE FROM PARK BRAKE SWITCH AND RECONNECT TO CIRCUIT DY OF CHASSIS ASM AS SHOWN.

- 40N GEN-4.0KW-ONANGAS-MICROQUIET
- 74J REARVIEW MONITOR SYSTEM
- 16E FORD CHASSIS 14,050 LB.GVWR
- 56F HEATER-AUXILIARY AUTOMOTIVE

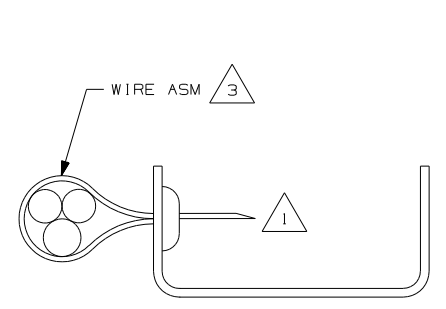


FOR ELECTRICAL TORQUE SPECIFICATIONS SEE DWG NO. 128783-01-000

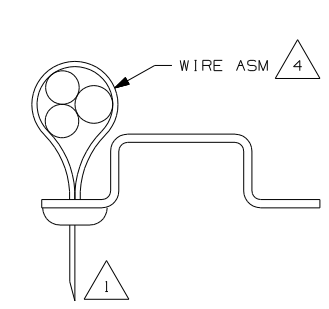
<b>WINNEBAGO</b>		COPYRIGHT 2004 WINNEBAGO INDUSTRIES, INC.	
DFTR	ORIG. DATE	ALL DIMENSIONS ARE IN MILLIMETERS	
CHKR		FIRST USED	
P.E.		06 431C	
M.E.		UNSPECIFIED TOLERANCES ARE:	
DSNR		MATERIAL:	
		WHOLE DIM (X)	:
		ONE-PLACE (X.X)	:
		TWO-PLACE (X.XX)	:
		ANGLE	:
		THIRD ANGLE PROJECTION	
DO NOT SCALE DRAWING			
TITLE: WIRING INSTL-CHASSIS			
SHEET 1 of 3	PART NO	154599	
REF:	1 10/18/2005		



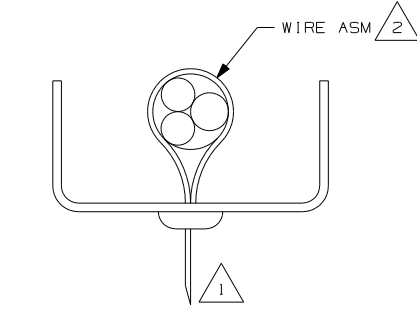
- NOTES:
- 4 WIRES TO BE TIED TO CROSS MEMBER USING EXISTING HOLES.
  - 3 WIRES TO BE TIED ON TOP OF RAIL USING EXISTING HOLES.
  - 2 WIRES TO BE TIED INSIDE RAIL USING EXISTING HOLES.
  - 1 CUT OFF EXCESS END OF WIRE TIE.



DETAIL BA-BA



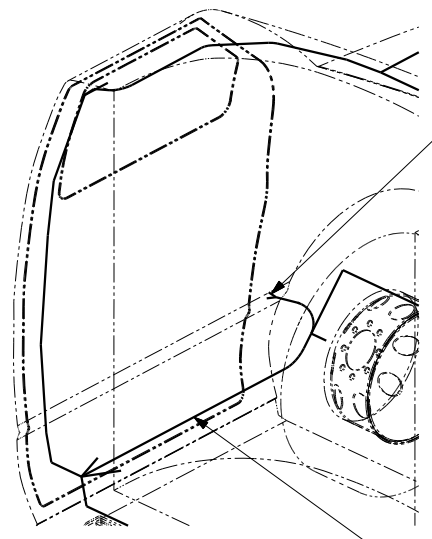
DETAIL BB-BB



DETAIL BC-BC

FOR ELECTRICAL TORQUE SPECIFICATIONS SEE DWG NO. 128783-01-000

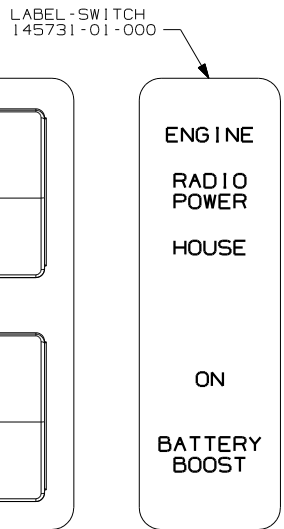
FIRST USED	06 431C
DO NOT SCALE DRAWING	
TITLE:	WIRING INSTL-CHASSIS
SHEET 2	PART NO 154599



REMOVE A-PILLAR, LOWER COVER  
ACCESS FORD CONNECTORS TO  
DOOR ASM.  
CONNECT WL TO PK/OR  
CONNECT WM TO PK/BK  
2 PLACES EACH  
POWER DOOR LOCK ACTUATORS

WIRE ASM-CHASSIS  
(REF)

DETAIL CA

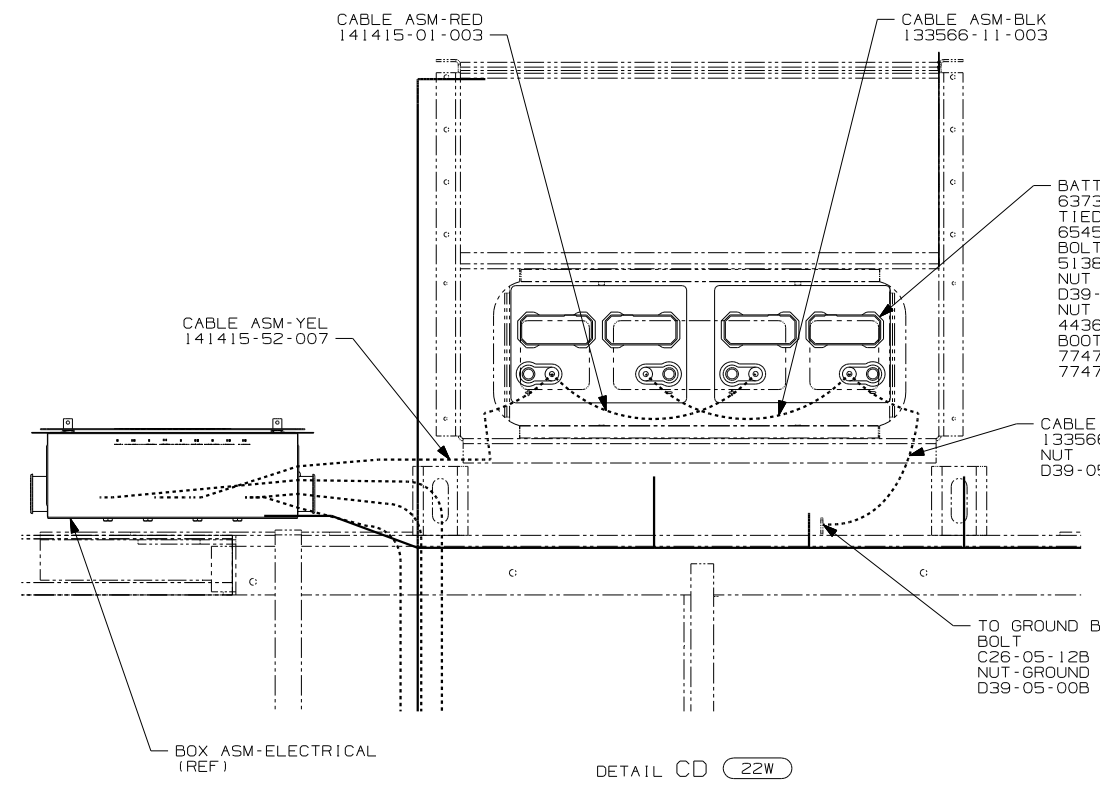


SWITCH-RADIO  
108357-08-000  
ACTUATOR  
108356-02-CHT

PLATE  
144363-12-CHT  
NUT  
112722-01-CHT (2)

SWITCH-AUX START  
108357-09-000  
ACTUATOR  
108356-02-CHT

DETAIL CF

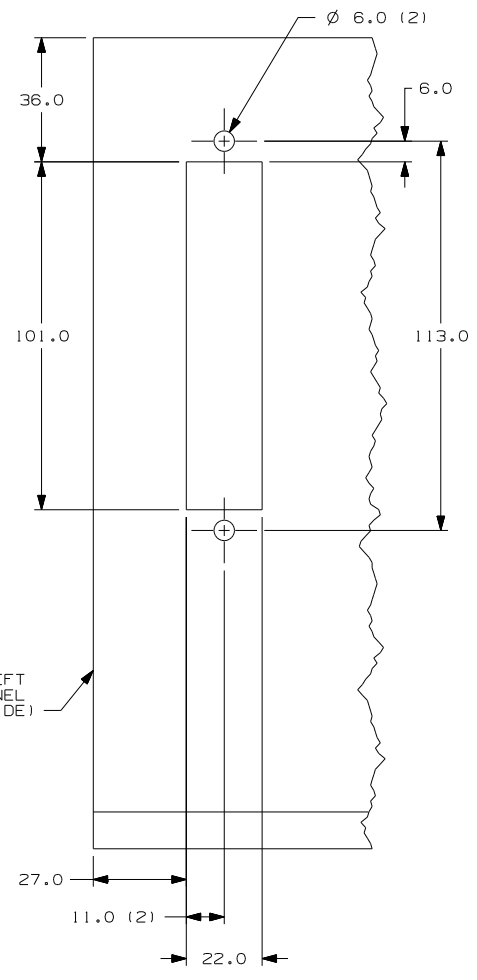


BATTERY  
63739-01-000 (2)  
TIEDOWN  
65451-05-000 (2)  
BOLT  
51387-06-000 (4)  
NUT  
D39-05-00B (4)  
NUT  
44364-02-000 (4)  
BOOT  
77479-01-000  
77479-02-000

CABLE ASM-BLK  
133566-11-008  
NUT  
D39-05-00B

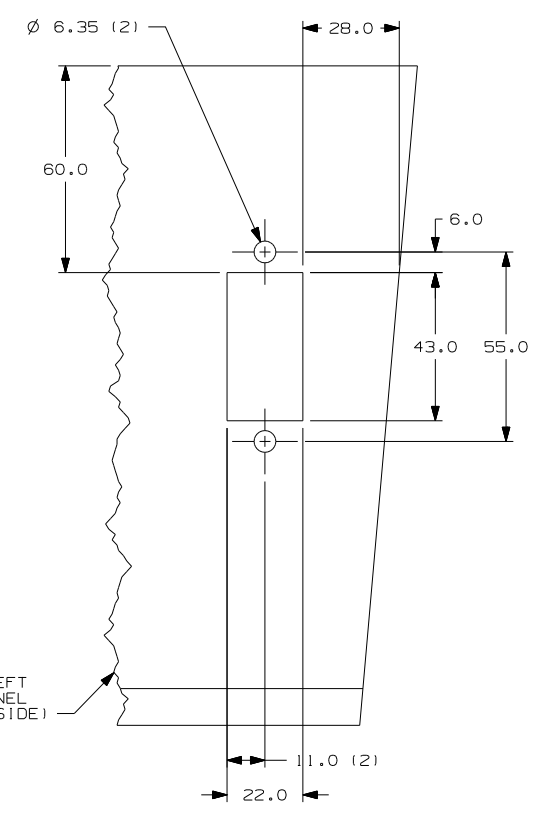
TO GROUND BAR  
BOLT  
C26-05-12B (2)  
NUT-GROUND  
D39-05-00B (2)

DETAIL CD (22W)



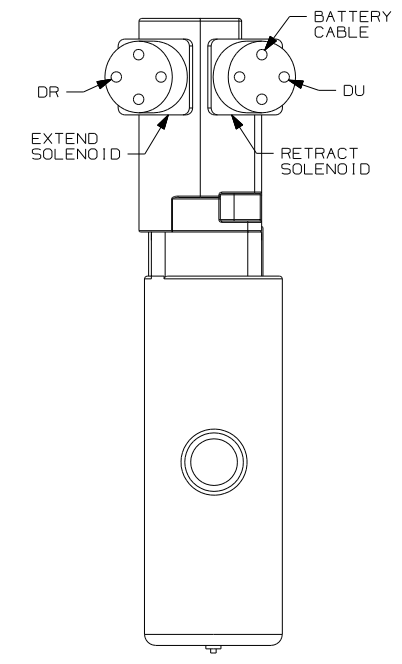
LOWER LEFT  
DASH PANEL  
(LEFT SIDE)

DETAIL CB



LOWER LEFT  
DASH PANEL  
(RIGHT SIDE)

DETAIL CG (56F) (9L1)



BATTERY  
CABLE

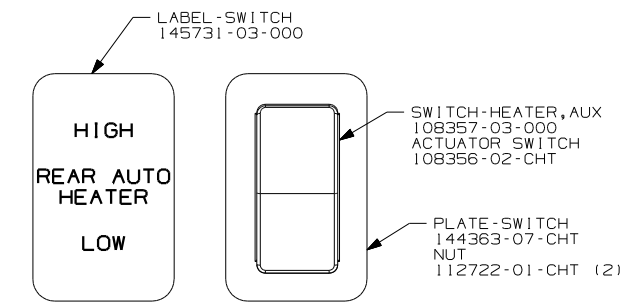
DR

DU

EXTEND  
SOLENOID

RETRACT  
SOLENOID

DETAIL CE



HIGH  
REAR AUTO  
HEATER  
LOW

SWITCH-HEATER, AUX  
108357-03-000  
ACTUATOR SWITCH  
108356-02-CHT

PLATE-SWITCH  
144363-07-CHT  
NUT  
112722-01-CHT (2)

DETAIL CC (56F) (9L1)

- (9L1) HOME COMFORT PLUS PACKAGE
- (56F) HEATER-AUXILIARY AUTOMOTIVE
- (22W) BATTERY-SECOND

FOR ELECTRICAL  
TORQUE  
SPECIFICATIONS  
SEE DWG NO.  
128783-01-000

FIRST USED	06 431C
TITLE	DO NOT SCALE DRAWING
SHEET 3	PART NO 154599
	10/18/2005