



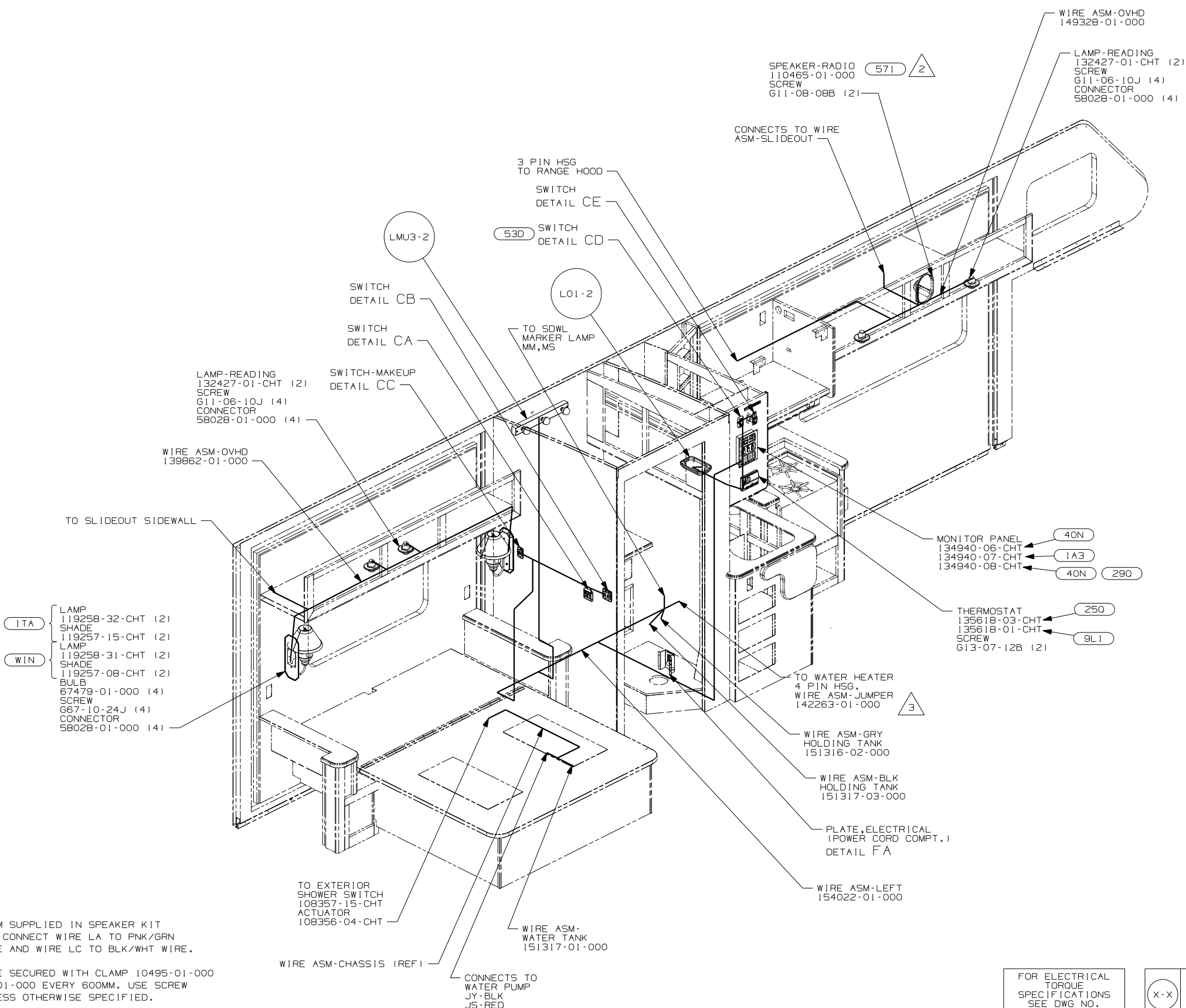
DANGER

Danger of electrical shock, burns or death. Always remove all power sources before attempting any repair, service or diagnostic work. Power can be present from shore power, generator, inverter or battery. All power sources must be disabled and secured before performing any service.



CAUTION

If you lack the skills, tools or equipment to perform diagnostic or repair work leave such work to an authorized Winnebago Industries dealer or other qualified shop.



- (1A3) GENERATOR WITHOUT
- (290) SOLAR PANEL - 10 WATT
- (571) RADIO SPEAKERS
- (53D) WTR HTR-6GAL/ELE/LP/MOTOR AID
- (9L1) HOME COMFORT PLUS PACKAGE
- (40N) GEN-4.0KW-ONAN-GAS-MICROLITE
- (250) A/C ROOF AIR (1) 14,800 BTU
- (WIN) WINNEBAGO ONLY
- (ITA) ITASCA ONLY

WINNEBAGO		COPYRIGHT 2004 WINNEBAGO INDUSTRIES, INC.	
DFTR	ORIG. DATE		
CHKR	ALL DIMENSIONS ARE IN MILLIMETERS		
P.E.	FIRST USED	06 430V	
M.E.			
DSNR			
UNSPECIFIED TOLERANCES ARE:		MATERIAL:	
WHOLE DIM (X)	:		*
ONE-PLACE (X.X)	:		*
TWO-PLACE (X.XX)	:		*
ANGLE	:		*
THIRD ANGLE PROJECTION		DO NOT SCALE DRAWING	
TITLE: WIRING INSTL-BODY, 12V			
SHEET 1 of 6		PART NO 154018	
REF:		1 10/18/2005	

3 WITHOUT (53D)

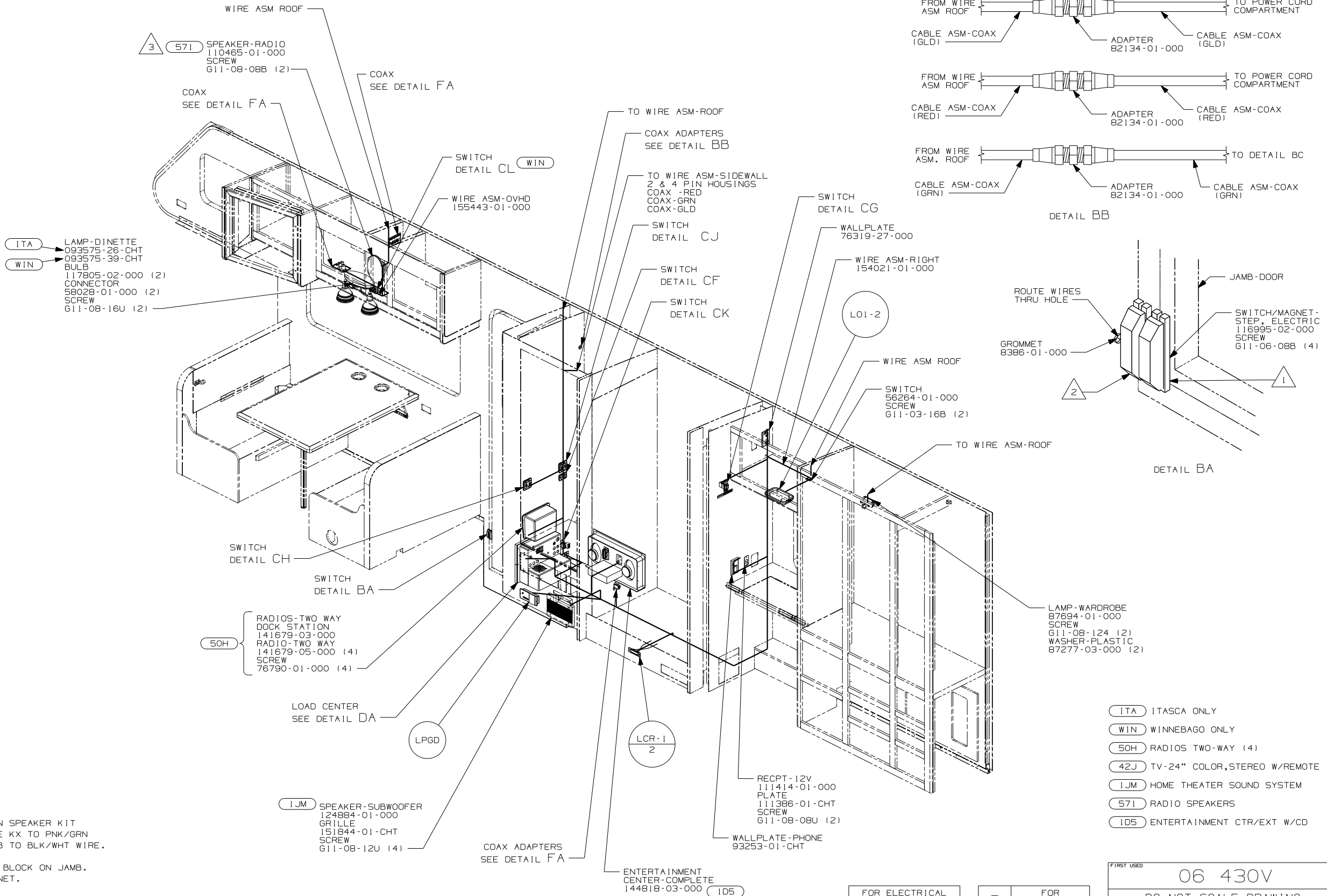
2 USE HOUSING ASM SUPPLIED IN SPEAKER KIT 110465-01-000. CONNECT WIRE LA TO PNK/GRN OR PNK/BLU WIRE AND WIRE LC TO BLK/WHT WIRE.

1. ALL WIRES TO BE SECURED WITH CLAMP 10495-01-000 OR CLIP 80734-01-000 EVERY 600MM. USE SCREW 667-10-12B UNLESS OTHERWISE SPECIFIED.

NOTES:

FOR ELECTRICAL TORQUE SPECIFICATIONS SEE DWG NO. 128783-01-000

(X-X) FOR ELECTRICAL CALLOUTS SEE DWG NO. 121339-01-000



- (ITA) LAMP-DINETTE
093575-26-CHT
- (WIN) LAMP-WARDROBE
093575-39-CHT
- BULB
- 117905-02-000 (2)
- CONNECTOR
- 58028-01-000 (2)
- SCREW
- 611-08-16U (2)

- (50H) RADIO-TWO WAY DOCK STATION
141679-03-000
- RADIO-TWO WAY
141679-05-000 (4)
- SCREW
76790-01-000 (4)

- (1JM) SPEAKER-SUBWOOFER
124884-01-000
- GRILLE
151844-01-CHT
- SCREW
611-08-12U (4)

- (ITA) ITASCA ONLY
- (WIN) WINNEBAGO ONLY
- (50H) RADIOS TWO-WAY (4)
- (42J) TV-24" COLOR, STEREO W/REMOTE
- (1JM) HOME THEATER SOUND SYSTEM
- (571) RADIO SPEAKERS
- (1D5) ENTERTAINMENT CTR/EXT W/CD

3 USE HOUSING ASM SUPPLIED IN SPEAKER KIT 110465-01-000. CONNECT WIRE KX TO PNK/GRN OR PNK/BLU WIRE AND WIRE LB TO BLK/WHT WIRE.

2 MOUNT SWITCH AND SPACER TO BLOCK ON JAMB. ADJUST HEIGHT TO MATCH MAGNET.

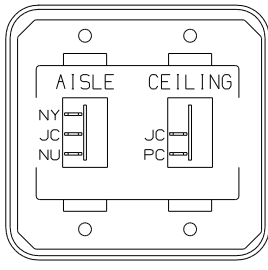
1 MOUNT MAGNET USING PILOT HOLES IN SCREEN DOOR FRAME. MOUNT WITH MAGNET TOWARD SWITCH.

NOTES:

FOR ELECTRICAL TORQUE SPECIFICATIONS SEE DWG NO. 128783-01-000

(X-X) FOR ELECTRICAL CALLOUTS SEE DWG NO. 121339-01-000

FIRST USED	06 430V
DO NOT SCALE DRAWING	
TITLE:	WIRING INSTL-BODY, 12V
SHEET 2	PART NO 154018



SWITCH-ROCKER
135740-01-CHT
135740-02-CHT
SWITCH-BASE
135741-02-CHT
SWITCH-BEZEL
135742-13-CHT
SCREW
G11-08-08U (4)

DETAIL CA

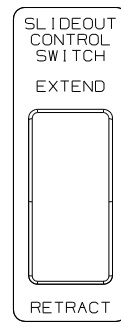
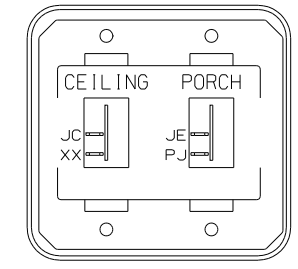


PLATE-SWITCH
144363-10-CHT
SWITCH
108357-06-000
ACTUATOR
108356-02-CHT
NUT
D65-08-00B (2)
LABEL
116220-01-000
DR,EB,DU,1DT,CCY,2DT

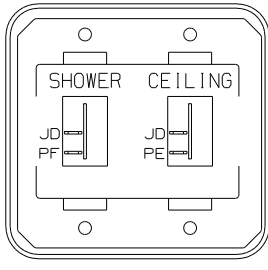
WARNING UNDERSTAND OPERATOR'S MANUAL BEFORE USING
KEEP PEOPLE AND OBSTRUCTIONS CLEAR OF
SLIDEOUT ROOM WHEN OPERATING TO AVOID
INJURY AND/OR PROPERTY DAMAGE

DETAIL CE



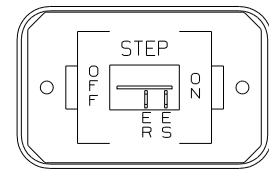
SWITCH-ROCKER
135740-01-CHT (2)
SWITCH-BASE
135741-02-CHT
SWITCH-BEZEL
135742-19-CHT
SCREW
G11-08-08U (4)

DETAIL CJ



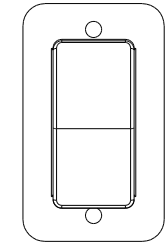
SWITCH-ROCKER
135740-01-CHT (2)
SWITCH-BASE
135741-02-CHT
SWITCH-BEZEL
135742-15-CHT
SCREW
G11-08-08U (4)

DETAIL CB

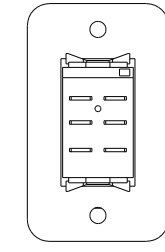


SWITCH-ROCKER
135740-01-CHT
SWITCH-BASE
135741-01-CHT
SWITCH-BEZEL
135742-11-CHT
SCREW
G11-08-08U (2)

DETAIL CF (IE2)

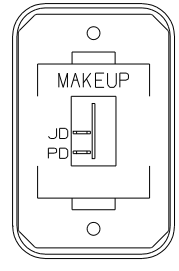


DETAIL CK (FRONT SIDE)



DETAIL CK (BACK SIDE)

SWITCH-BATTERY, DISC
108357-06-000
ACTUATOR-SWITCH
108356-11-CHT
PLATE-SWITCH
98351-07-CHT
SCREW
G11-06-10U (2)



SWITCH-ROCKER
135740-01-CHT
SWITCH-BASE
135741-01-CHT
SWITCH-BEZEL
135742-08-CHT
SCREW
G11-08-08U (2)

DETAIL CC

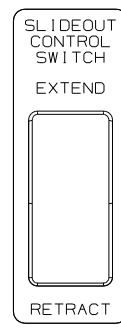
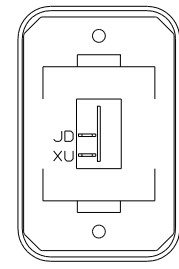


PLATE-SWITCH
144363-09-CHT
SWITCH
108357-06-000
ACTUATOR
108356-02-CHT
NUT
D65-08-00B (2)
LABEL
116220-01-000
BBM,EB,BBN,1DT,CCY,2DT

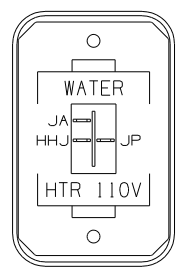
WARNING UNDERSTAND OPERATOR'S MANUAL BEFORE USING
KEEP PEOPLE AND OBSTRUCTIONS CLEAR OF
SLIDEOUT ROOM WHEN OPERATING TO AVOID
INJURY AND/OR PROPERTY DAMAGE

DETAIL CG



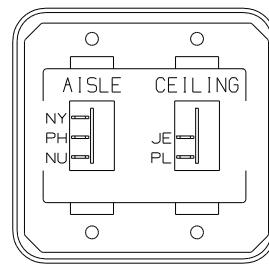
DETAIL CL (WIN)

SWITCH-ROCKER
135740-01-CHT
SWITCH-BASE
135741-01-CHT
SWITCH-BEZEL
135742-01-CHT
SCREW
G11-08-08U (2)



SWITCH-ROCKER
135740-06-CHT
SWITCH-BASE
135741-01-CHT
SWITCH-BEZEL
135742-35-CHT
SCREW
G11-08-08U (2)

DETAIL CD (53D)



SWITCH-ROCKER
135740-01-CHT
135740-02-CHT
SWITCH-BASE
135741-02-CHT
SWITCH-BEZEL
135742-13-CHT
SCREW
G11-08-08U (4)

DETAIL CH

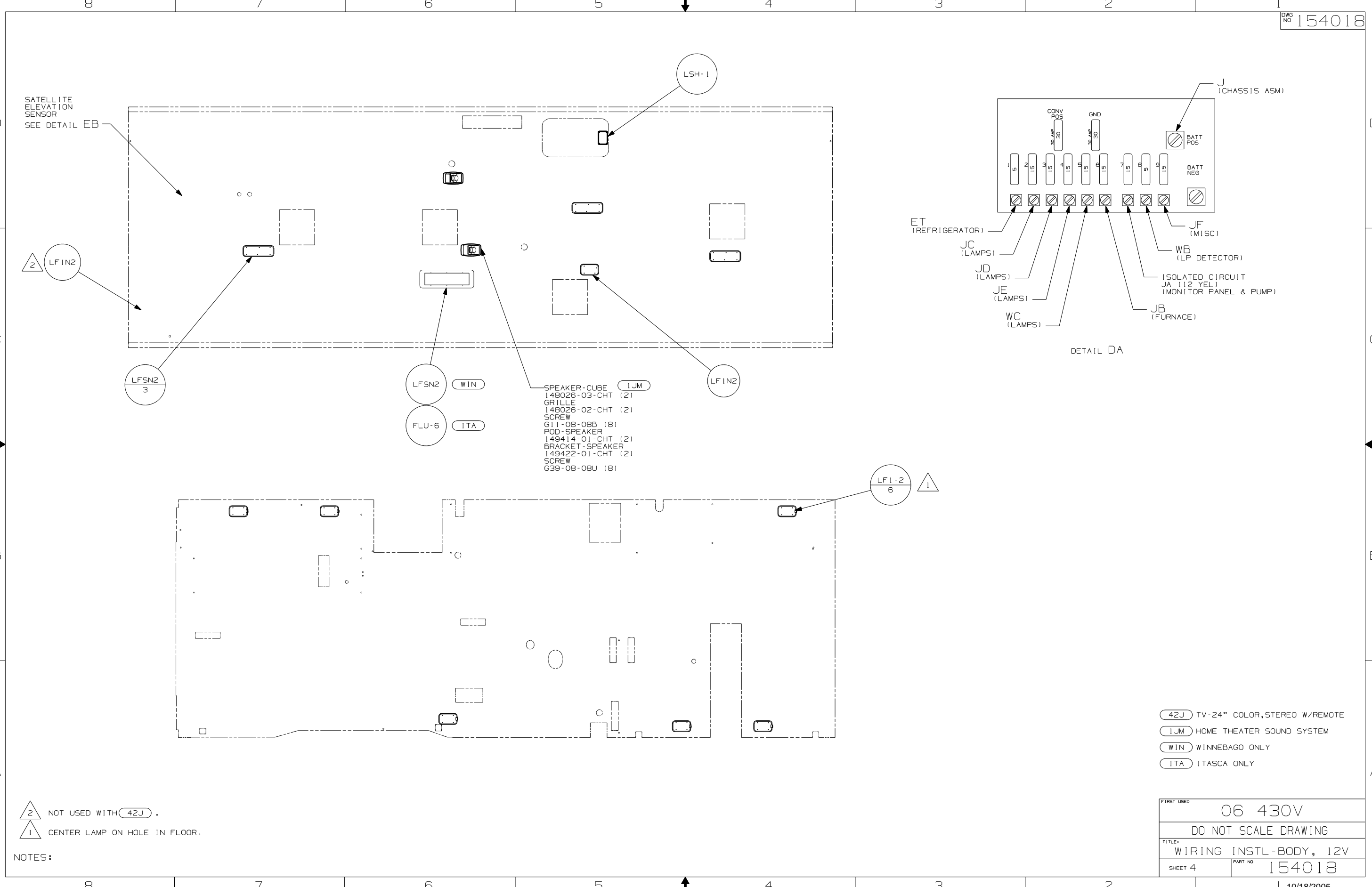
FOR ELECTRICAL
TORQUE
SPECIFICATIONS
SEE DWG NO.
128783-01-000

(X-X)
FOR
ELECTRICAL
CALLOUTS
SEE DWG NO.
121339-01-000

- (WIN) WINNEBAGO ONLY
- (53D) WTR HTR-6GAL/ELE/LP/MOTORA ID
- (IE2) ENTRANCE STEP-ELEC.

FIRST USED	06 430V
TITLE	DO NOT SCALE DRAWING
TITLE	WIRING INSTL-BODY, 12V
SHEET 3	PART NO 154018

NOTES:



SATELLITE ELEVATION SENSOR
SEE DETAIL EB

2 LFIN2

LFSN2
3

LFSN2

WIN

FLU-6

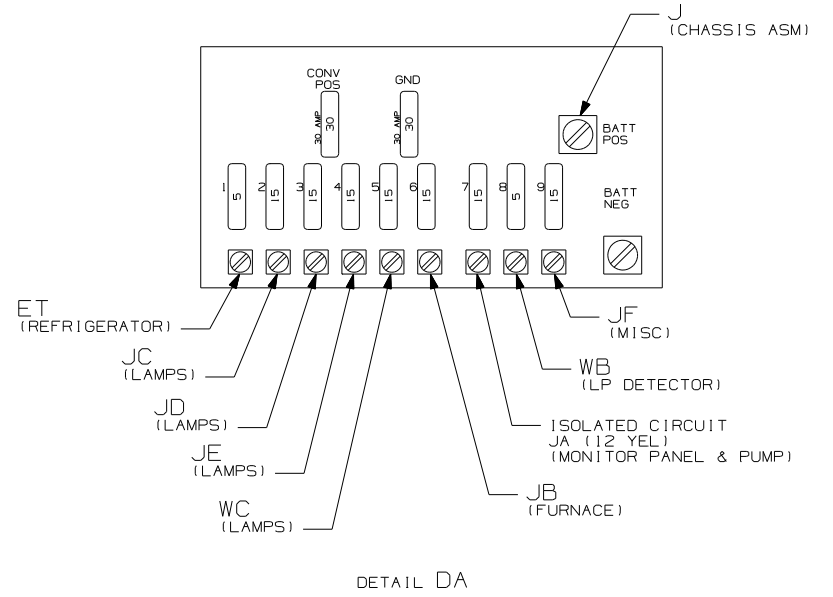
ITA

LSH-1

SPEAKER-CUBE (1JM)
148026-03-CHT (2)
GRILLE
148026-02-CHT (2)
SCREW
G11-08-08B (8)
POD-SPEAKER
149414-01-CHT (2)
BRACKET-SPEAKER
149422-01-CHT (2)
SCREW
G39-08-08U (8)

LFI-2
6

1



- 42J TV-24" COLOR, STEREO W/REMOTE
- 1JM HOME THEATER SOUND SYSTEM
- WIN WINNEBAGO ONLY
- ITA ITASCA ONLY

NOTES:
 2 NOT USED WITH 42J.
 1 CENTER LAMP ON HOLE IN FLOOR.

FIRST USED	06 430V
DO NOT SCALE DRAWING	
TITLE	WIRING INSTL-BODY, 12V
SHEET 4	PART NO 154018

8

7

6

5

4

3

2

1

D

D

C

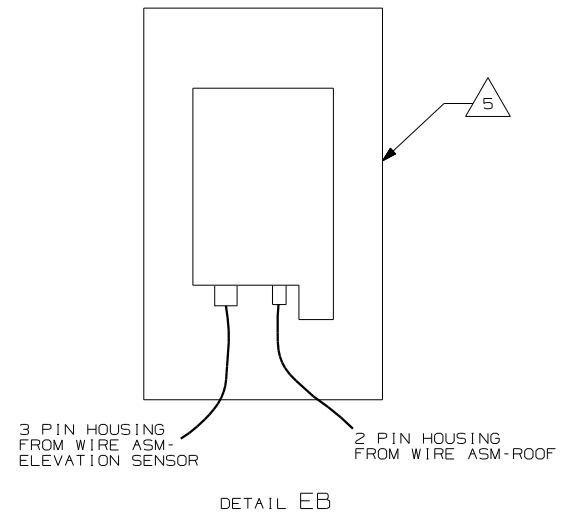
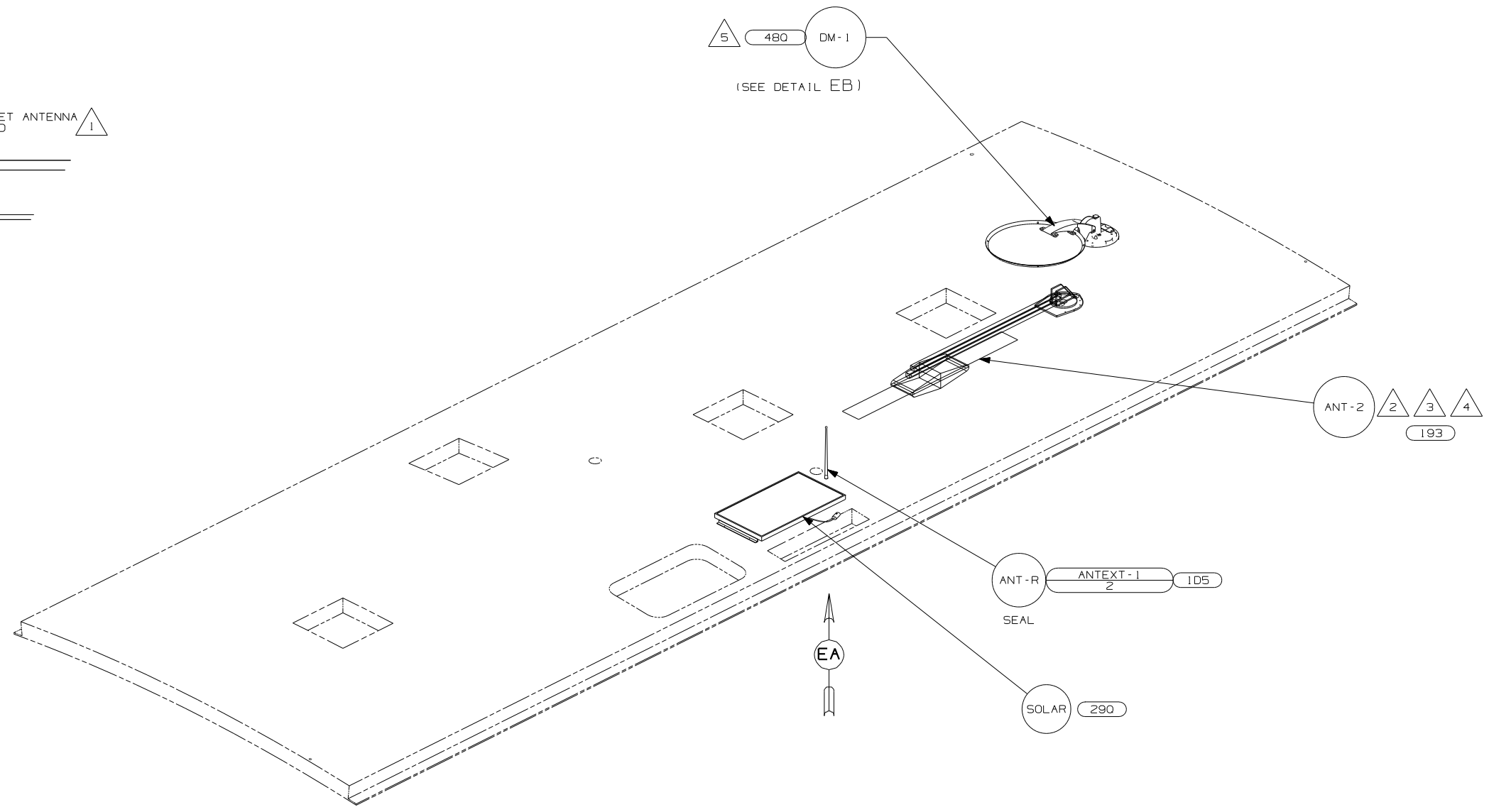
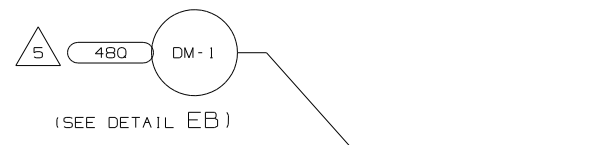
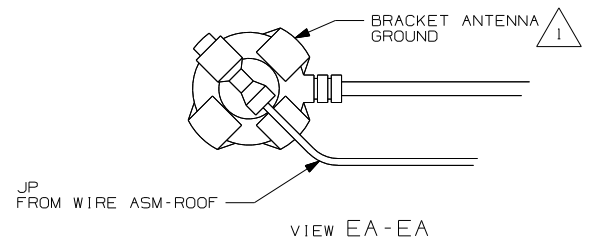
C

B

B

A

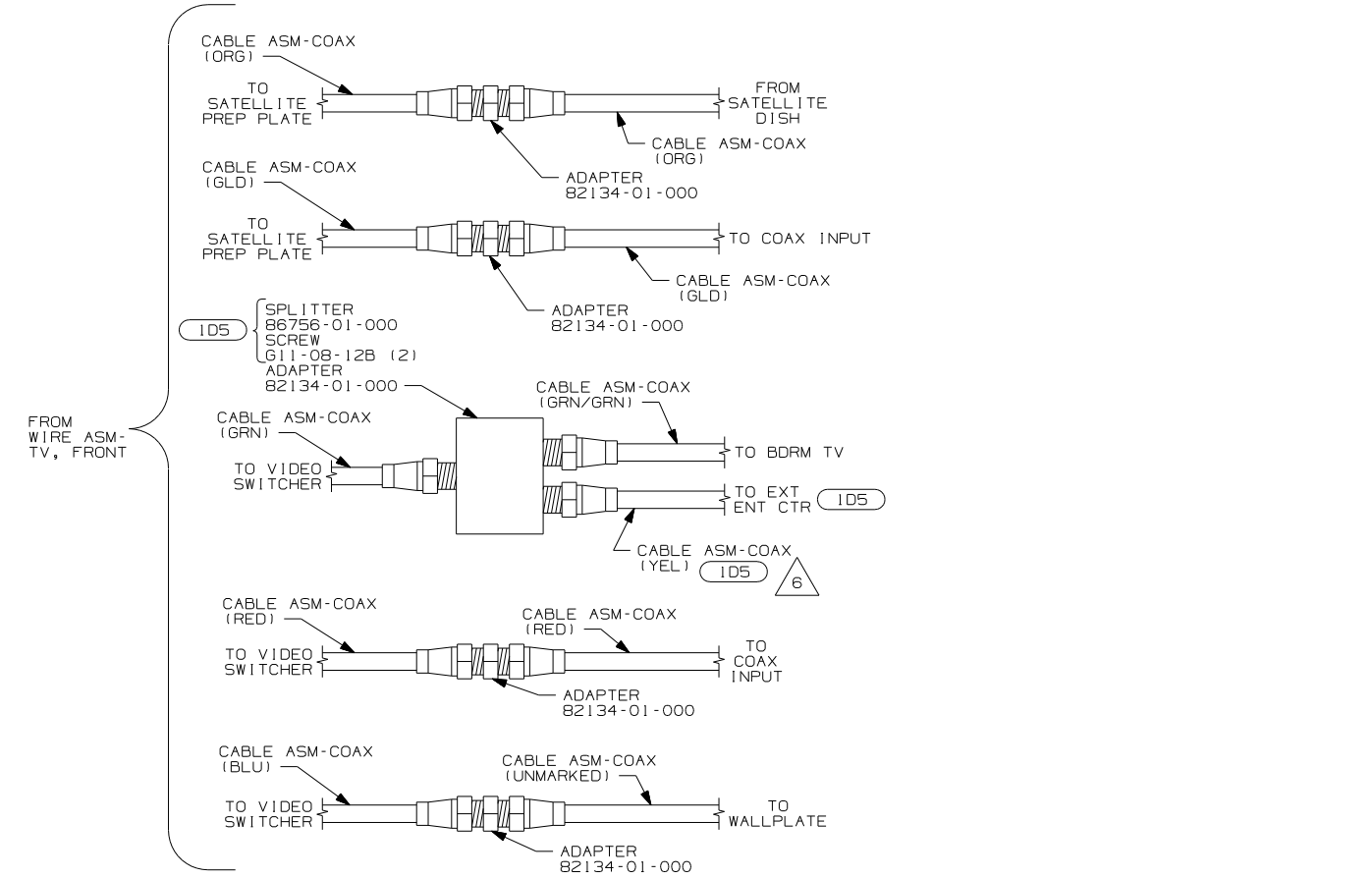
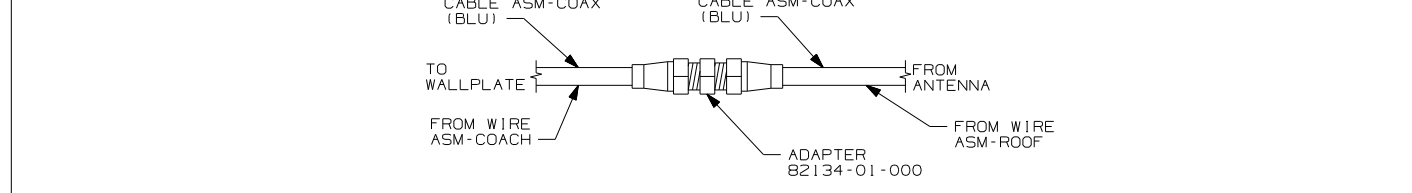
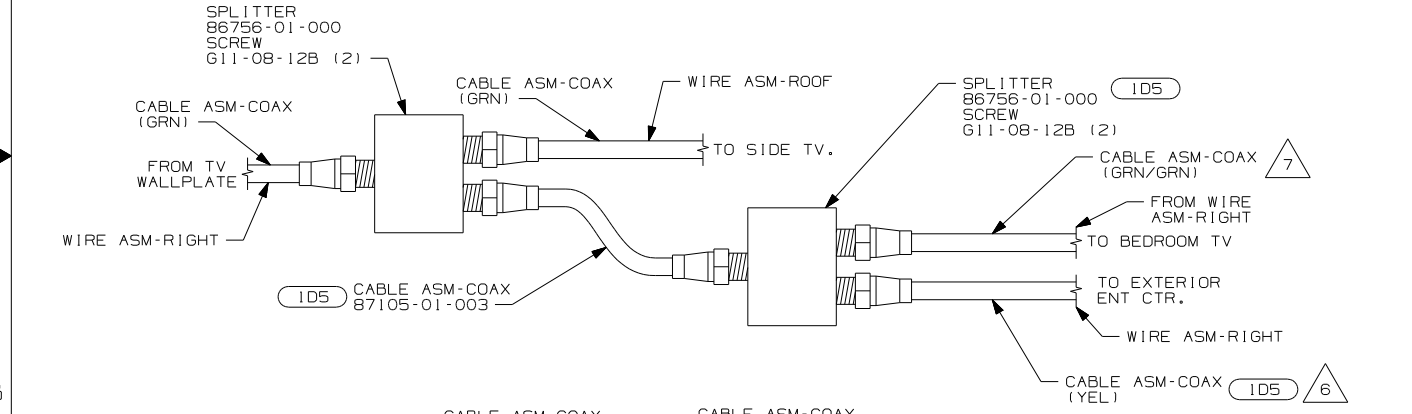
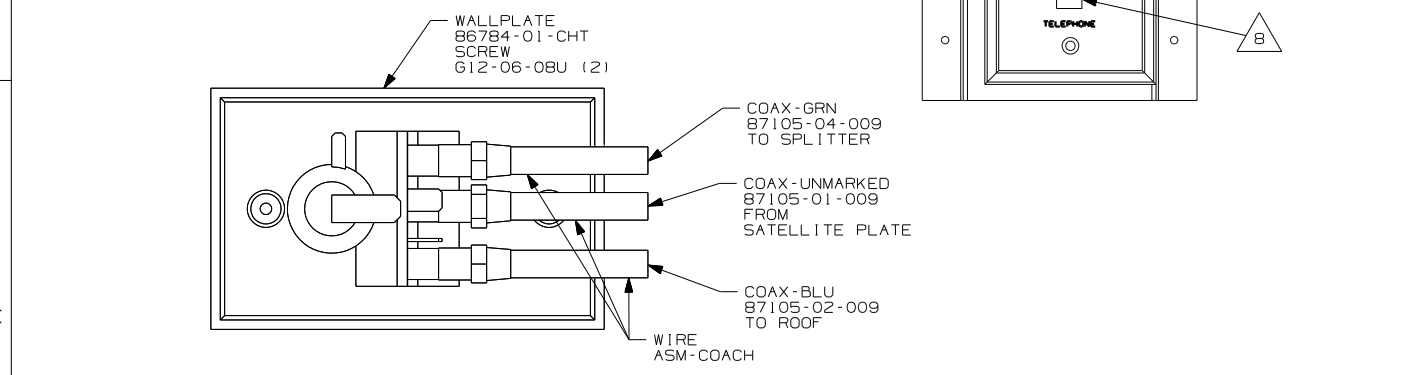
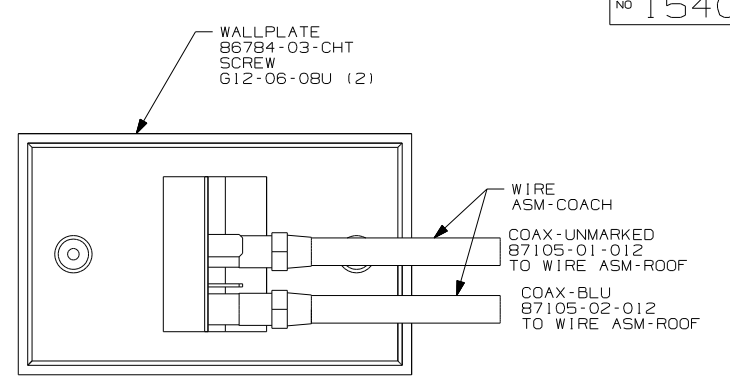
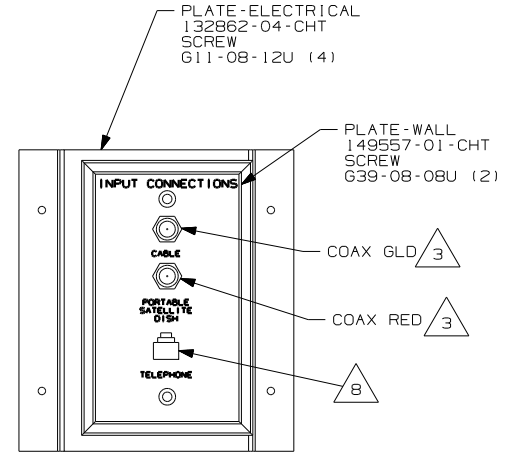
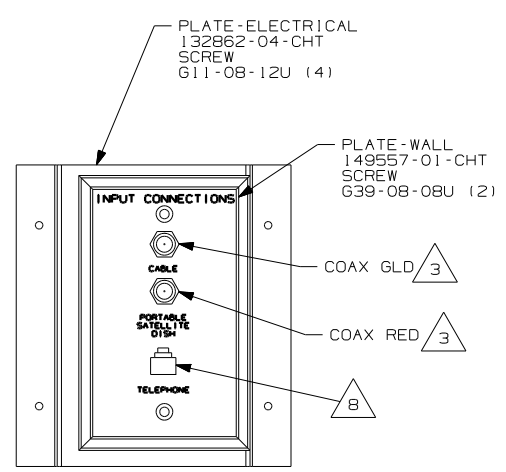
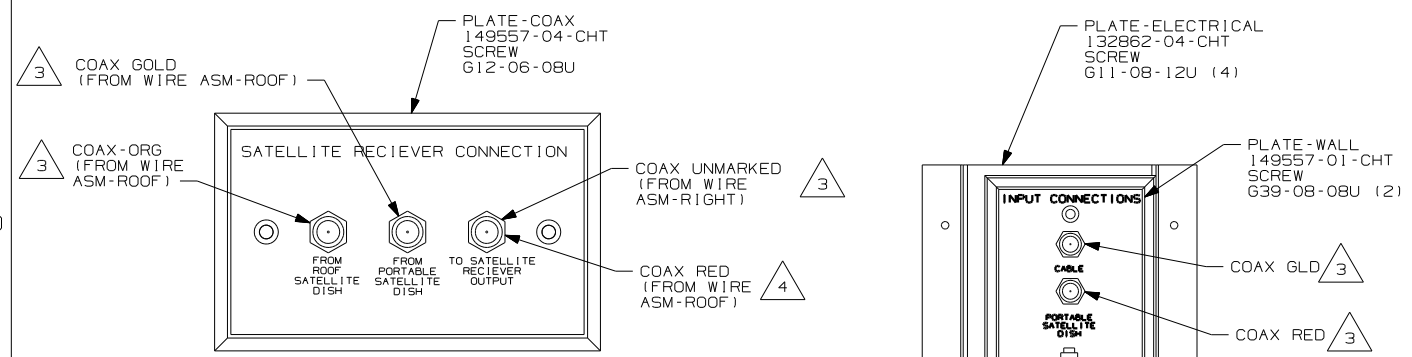
A



- NOTES:
- 5 SENSOR SUPPLIED WITH SATELLITE ASSEMBLY.
 - 4 SEE DRAWING 76319-01-000 FOR INSTALLATION OF TV ANTENNA.
 - 3 LOCATE CLAMP TO RETAIN CABLE BUT NOT TO RESTRICT ANTENNA TRAVEL.
 - 2 ADD RUBBER BUMPER TO ROOF UNDER EACH END OF ANTENNA IN DOWN POSITION WHICH MAY COME INTO CONTACT WITH ROOF.
 - 1 WRAP BRACKET LEGS AROUND ANTENNA BASE.

- 105 ENTERTAINMENT CTR/EXT W/CD
- 480 SATELLITE DISH
- 193 TV ANTENNA-AMPLIFIED SYSTEM
- 290 SOLAR PANEL-10 WATT

FIRST USED	06 430V
DO NOT SCALE DRAWING	
TITLE:	WIRING INSTL-BODY, 12V
SHEET 5	PART NO 154018



- NOTES:
- 8 CONNECT TELEPHONE WIRES TO MATCHING COLORS ON PLATE-WALL.
 - 7 COAX IS CONNECTED TO FIRST SPLITTER WITHOUT ID5
 - 6 COAX NOT USED WITHOUT ID5
 - 5 WITH SIDE ENTERRAINMENT CENTER, SEE WIRING INSTL-TV/VCR, SIDE FOR ADDITIONAL INFORMATION.
 - 4 CONNECT COAX TO FRONT SIDE OF WALLPLATE.
 - 3 CONNECT COAX TO BACKSIDE OF WALLPLATE.
 - 2 WITHOUT 42J
 - 1 WITH FRONT ENTERRAINMENT CENTER, SEE WIRING INSTL-TV/VCR, FRONT FOR ADDITIONAL INFORMATION.

DETAIL FA 2

DETAIL FA 42J 1

- 42J TV-24" COLOR, STEREO W/REMOTE
- ID5 ENTERTAINMENT CENTER/EXT W/CD
- 265 CODES/STANDARDS-CSA/CMVSS
- 1B1 CODES/STANDARDS USA

FIRST USED	06 430V
TITLE	DO NOT SCALE DRAWING
	WIRING INSTL-BODY, 12V
SHEET 6	PART NO 154018