



DANGER

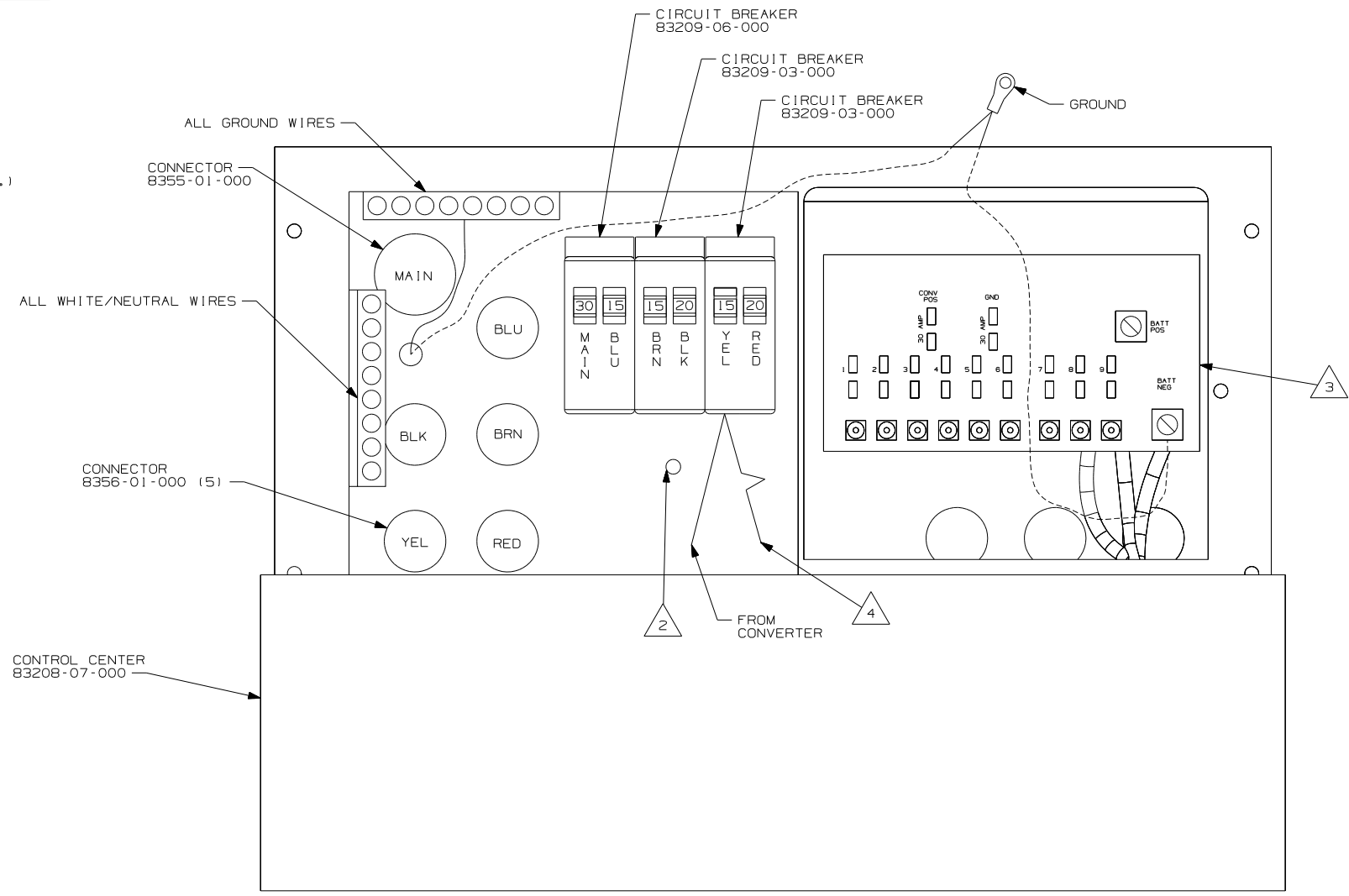
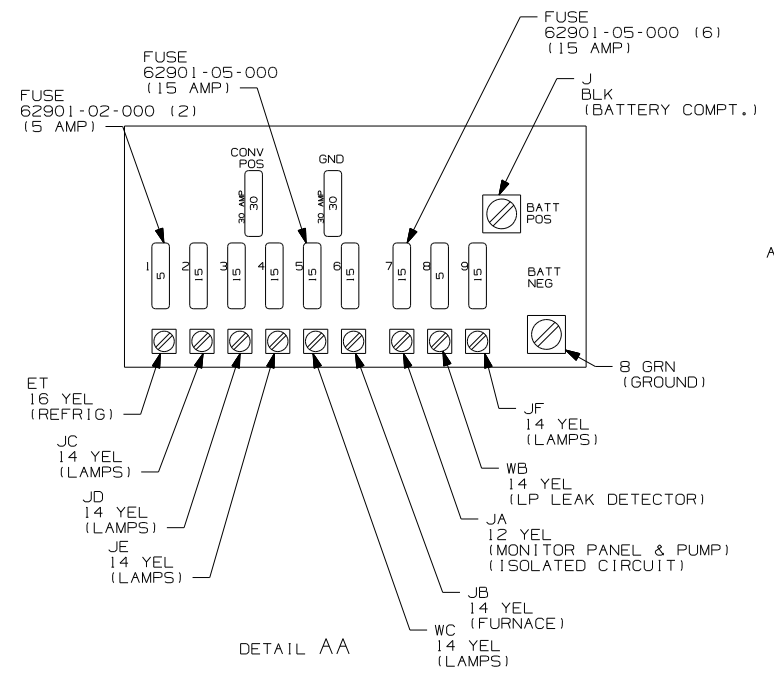
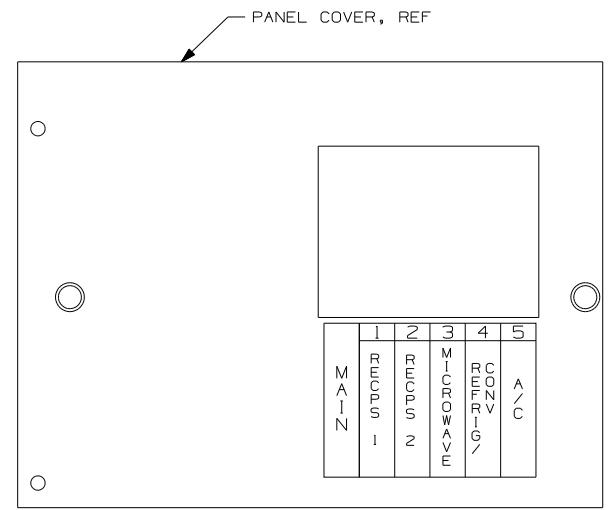
Danger of electrical shock, burns or death. Always remove all power sources before attempting any repair, service or diagnostic work. Power can be present from shore power, generator, inverter or battery. All power sources must be disabled and secured before performing any service.



CAUTION

If you lack the skills, tools or equipment to perform diagnostic or repair work leave such work to an authorized Winnebago Industries dealer or other qualified shop.

8		7		6		5		4		3		2	
		427P		430V		431C							
WIRE ASM-110V US		150747-01-000		154024-01-000		154605-01-000							
WIRE ASM-110V CA		150747-02-000		154024-02-000		154605-02-000							
GROUND		136145-02-026		136145-02-022		136145-02-030							
GENERATOR CABLE ASM	UL	N/A		8022-01-000 4200		N/A							
	CA	N/A		24743-01-000 4200		N/A							
THROW IN #1	14-UL	N/A		N/A		136131-03-008		5					
	14-CA	N/A		N/A		136134-03-008		5					
THROW IN #2	14-UL	N/A		N/A		N/A							
	14-CA	N/A		N/A		N/A							
THROW IN #3	12-UL	N/A		N/A		136135-09-020		53D					
	12-CA	N/A		N/A		136136-09-020		53D					
THROW IN #4	14-UL	N/A		N/A		136131-19-040		40B					
	14-CA	N/A		N/A		136134-19-040		40B					



- 40B INVERTER-DC/AC, 300 WATT
- 12D ELECTRICAL SYSTEM 30 AMP
- 265 CODES/STANDARDS-CSA/CMVSS
- 1B1 CODES/STANDARDS USA

1B1 265 12D

WINNEBAGO COPYRIGHT 2004 WINNEBAGO INDUSTRIES, INC.

DFTR	ORIG. DATE
CHKR	ALL DIMENSIONS ARE IN MILLIMETERS
P.E.	FIRST USED
M.E.	06 400-SER
DSNR	

UNSPECIFIED TOLERANCES ARE: MATERIAL:

WHOLE DIM (X)	:	.
ONE-PLACE (X.X)	:	.
TWO-PLACE (X.XX)	:	.
ANGLE	:	.
THIRD ANGLE PROJECTION		.

DO NOT SCALE DRAWING

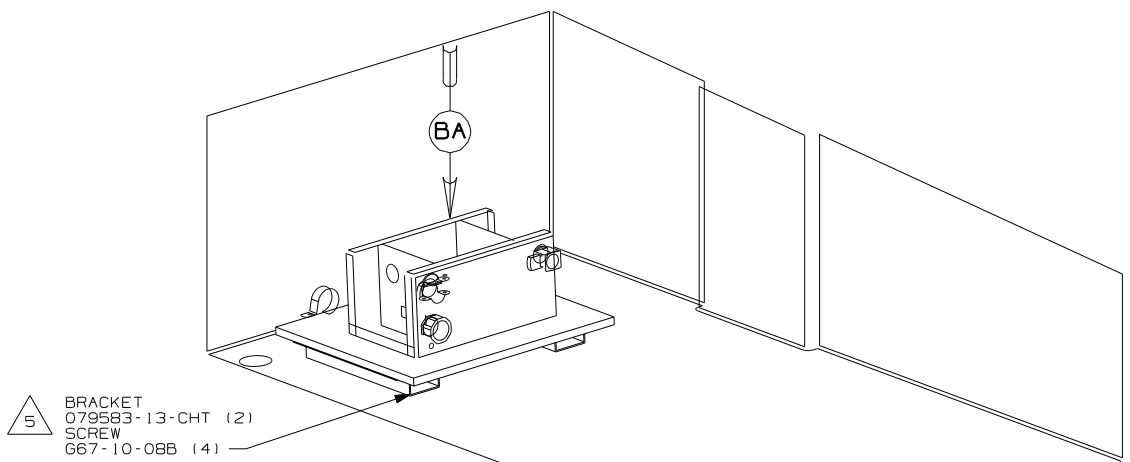
TITLE: LOAD CENTER/ATS ASM

SHEET 1 OF 2 PART NO 154268

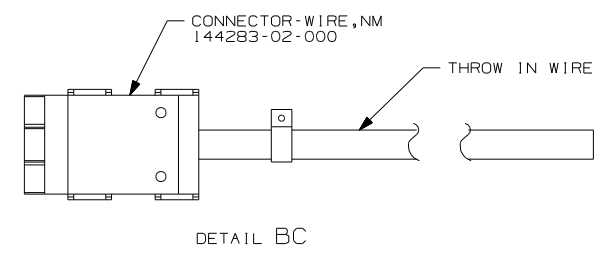
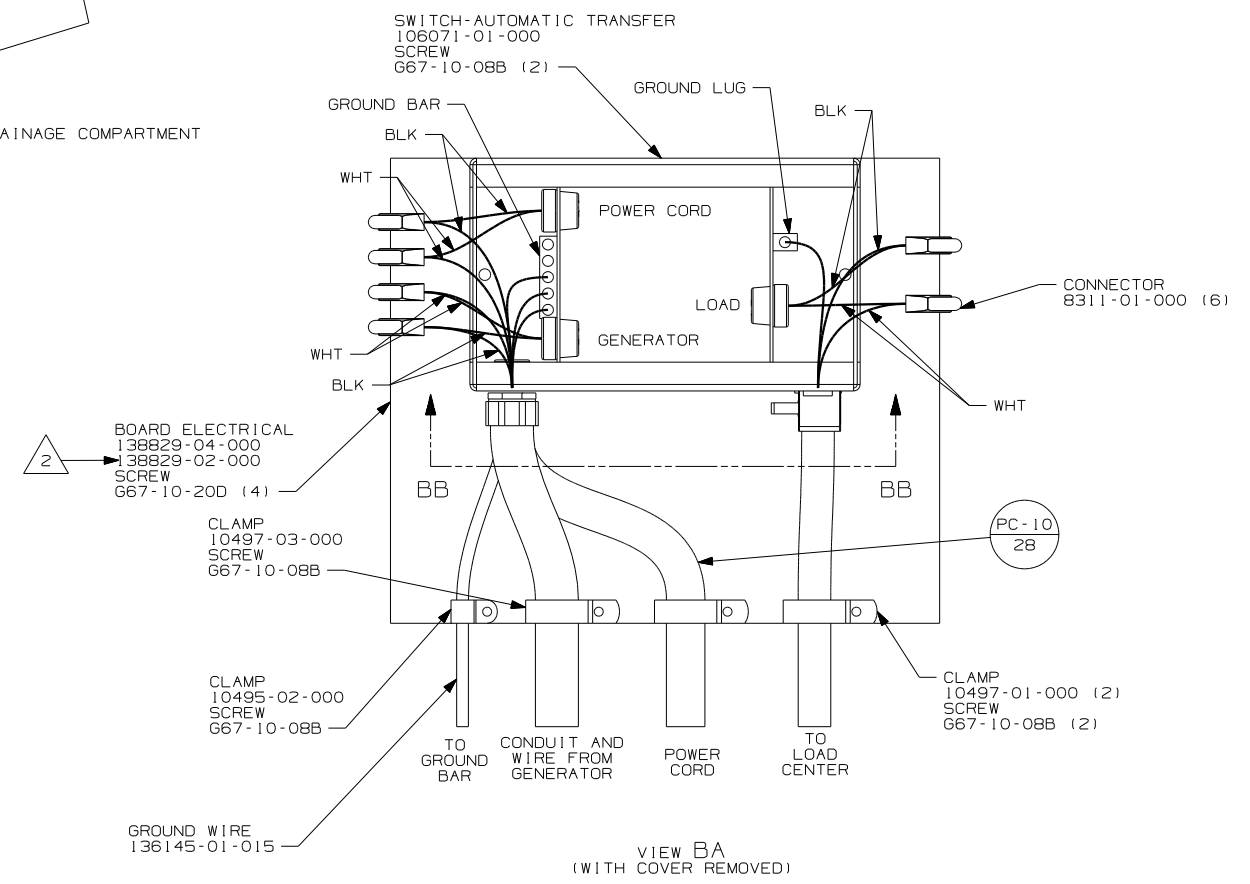
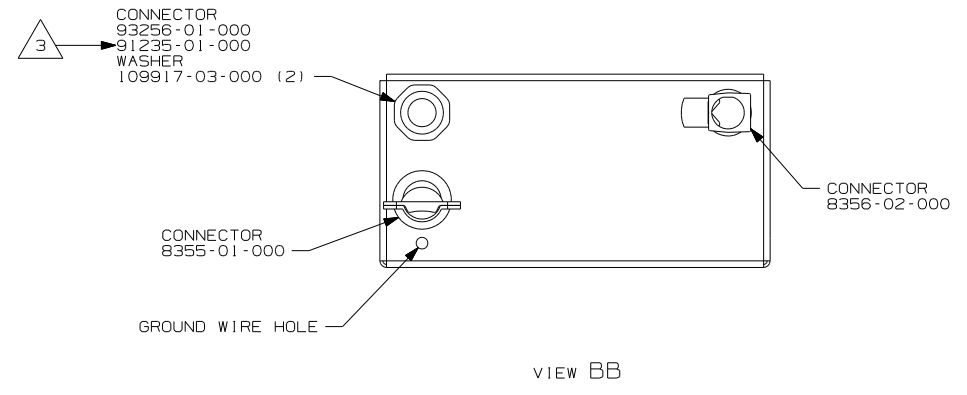
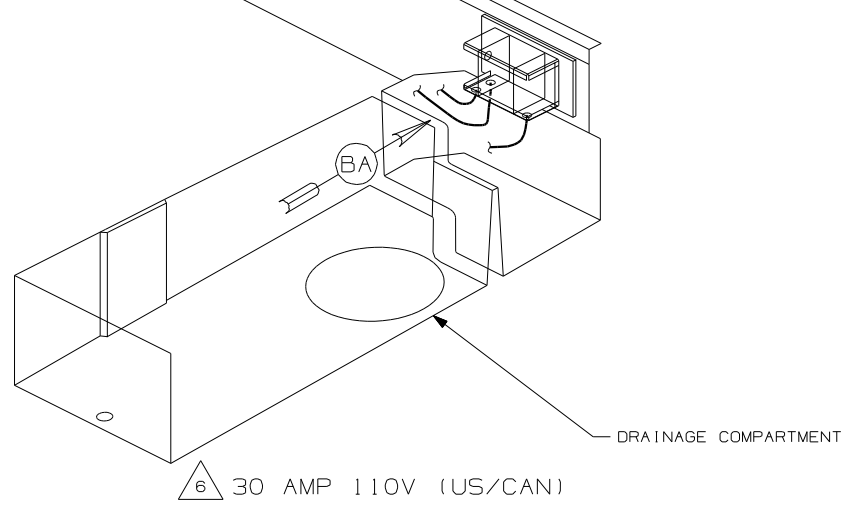
REF: 1 5/9/2005

- 5 FOR CONNECTOR INSTALLATION SEE DETAIL BC.
- 4 MAKE CONNECTION TO PROVIDED CONVERTER LEAD USING SUPPLIED WIRE NUT CONNECTOR
- 3 SEE WIRING INSTL-BODY, 12V FOR ADDITIONAL INFORMATION.
- 2 SECURE WIRES TO BACKSIDE OF LOAD CENTER WITH WIRE TIE 116673-01-000.

1. ALL GROUNDS WIRES TO BE COVERED WITH TUBING 8041-02-000.
NOTES:



4 30 AMP 110V (US/CAN)
DRAINAGE COMPARTMENT



- NOTES:
- 6 USED WITH 430V & 431C.
 - 5 MOUNT BRACKET WITH EDGE OF FLANGE FLUSH WITH EDGE OF PLYWOOD, CENTERED ON PLYWOOD AS SHOWN.
 - 4 USED ONLY WITH 427P.
 - 3 USED ONLY WITH 430V.
 - 2 USED ONLY WITH 431C.
 - 1 ALL WIRES TO BE CLAMPED WITHIN 200 OF BOX.

FOR ELECTRICAL TORQUE SPECIFICATIONS SEE DWG NO. 128783-01-000

FOR ELECTRICAL CALLOUTS SEE DWG NO. 121339-01-000

- 12D ELECTRICAL SYSTEM - 30 AMP
- 265 CODES/STANDARDS-CSA/CMVSS
- 1B1 CODES/STANDARDS USA

FIRST USED	06 400-SER
TITLE	DO NOT SCALE DRAWING
TITLE	LOAD CENTER/ATS ASM
SHEET 2	PART NO 154268