



**DANGER**

**Danger of electrical shock, burns or death.** Always remove all power sources before attempting any repair, service or diagnostic work. Power can be present from shore power, generator, inverter or battery. All power sources must be disabled and secured before performing any service.

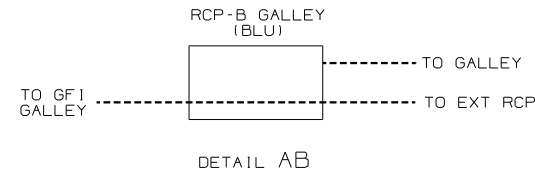
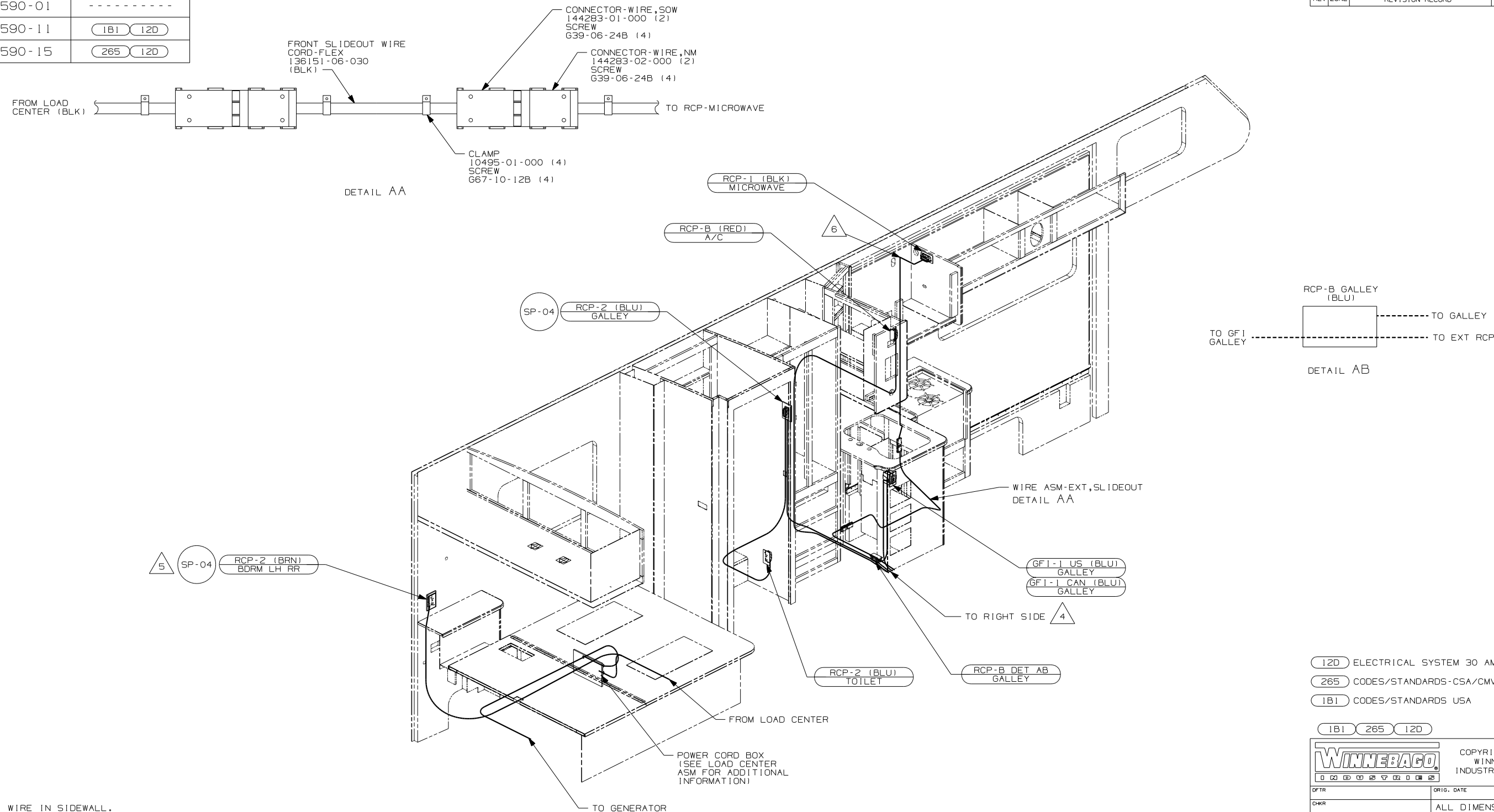


**CAUTION**

If you lack the skills, tools or equipment to perform diagnostic or repair work leave such work to an authorized Winnebago Industries dealer or other qualified shop.

| DRAWING NO. | FEATURE     |
|-------------|-------------|
| 153590-01   | -----       |
| 153590-11   | (1B1) (12D) |
| 153590-15   | (265) (12D) |

|          |                 |        |         |
|----------|-----------------|--------|---------|
| RELEASE  | REV DATE        | DWG NO | 153590  |
| REV ZONE | REVISION RECORD | DATE   | DTR-016 |



- △ 6 WIRE IN SIDEWALL.
- △ 5 ROUTE WIRE THRU SIDEWALL.
- △ 4 ROUTE WIRE THRU FLOOR.

3. ALL GROUND WIRES TO BE COVERED WITH TUBING 8041-02-000.
2. ALL 110V WIRES ARE TO BE CLAMPED WITH CLAMP 10497-01-000 WITHIN 200MM OF OUTLET BOXES. USE SCREW G67-10-12B.
1. ALL WIRES TO BE CLAMPED WITH CLAMP 10495-01-000 OR CLIP 80734-01-000 EVERY 600MM. USE SCREW G67-10-12B UNLESS OTHERWISE SPECIFIED.

NOTES:

- (12D) ELECTRICAL SYSTEM 30 AMP
- (265) CODES/STANDARDS-CSA/CMVSS
- (1B1) CODES/STANDARDS USA

(1B1) (265) (12D)

**WINNEBAGO** COPYRIGHT 2004 WINNEBAGO INDUSTRIES, INC.

|      |                                   |
|------|-----------------------------------|
| DTR  | ORIG. DATE                        |
| CHKR | ALL DIMENSIONS ARE IN MILLIMETERS |
| P.E. |                                   |
| M.E. | FIRST USED                        |
| DSNR | 06 332G                           |

UNSPECIFIED TOLERANCES ARE: MATERIAL:

WHOLE DIM (X) :  
ONE-PLACE (X.X) :  
TWO-PLACE (X.XX) :  
ANGLE :

THIRD ANGLE PROJECTION

DO NOT SCALE DRAWING

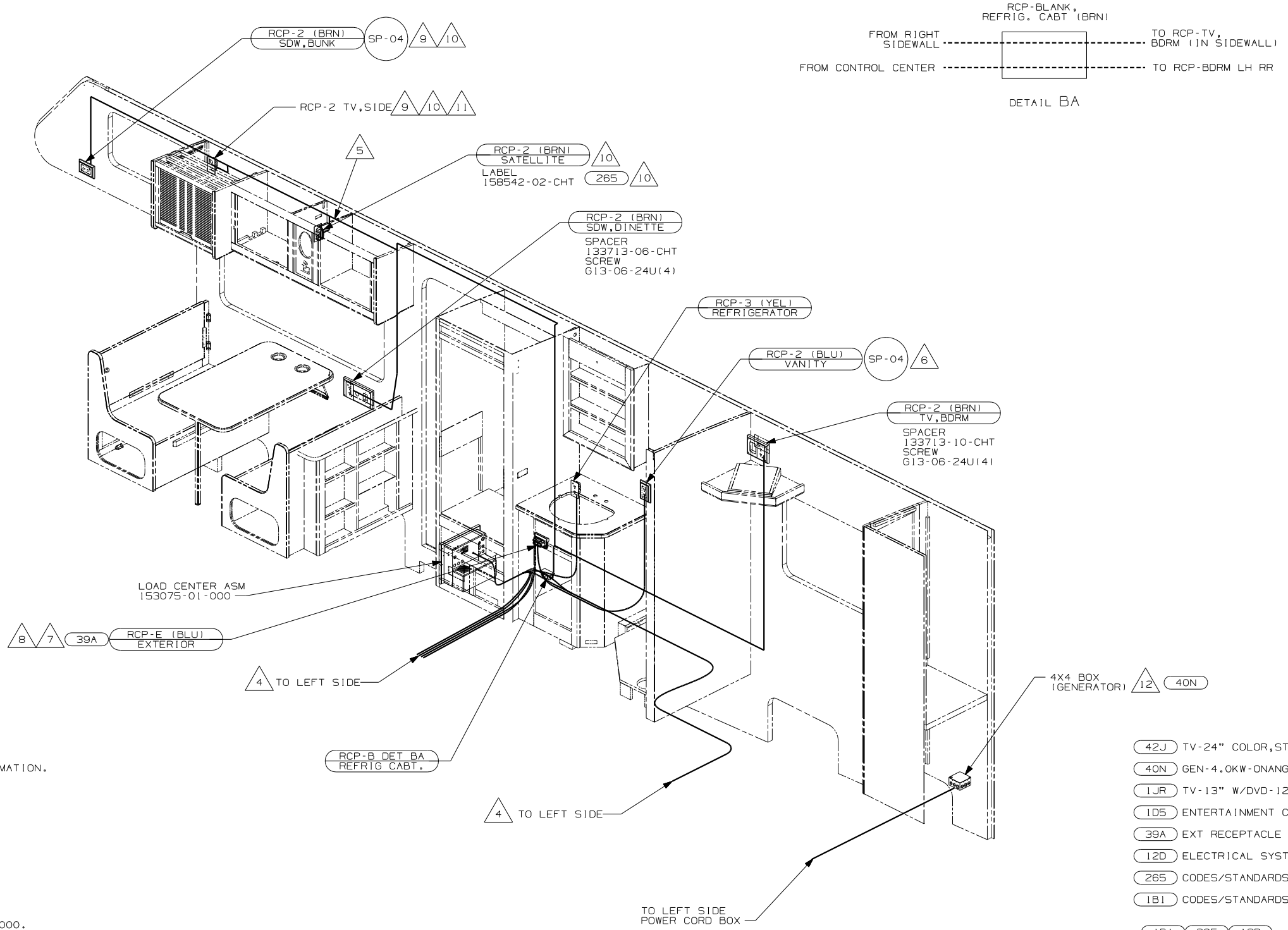
TITLE: WIRING INST-BODY, 110V

SHEET 1 OF 2 PART NO 153590

REF: 1 11/8/2005

FOR ELECTRICAL TORQUE SPECIFICATIONS SEE DWG NO. 128783-01-000

(X-X) FOR ELECTRICAL CALLOUTS SEE DWG NO. 121339-01-000



- 12 SEE GENERATOR INSTALLATION FOR MORE INFORMATION.
  - 11 NOT USED WITH 1JR
  - 10 NOT USED WITH 42J
  - 9 SEE WIRING INSTL-TV/VCR, SIDE FOR ADDITIONAL INFORMATION.
  - 8 NOT USED WITH 1D5
  - 7 SEE ENT CTR INSTL-EXT FOR ADDITIONAL INFORMATION.
  - 6 ROUTE WIRE THRU SIDEWALL
  - 5 WIRE ROUTED IN SIDEWALL.
  - 4 ROUTE WIRE THRU FLOOR.
3. ALL GROUND WIRE TO BE COVERED WITH TUBING 8041-02-000.
  2. ALL 110V WIRE TO BE CLAMPED WITH CLAMP 10497-05-000 WITHIN 200MM OF OUTLET BOXES, USE SCREW G67-10-12B.
  1. ALL WIRES TO BE SECURED WITH CLAMP 10495-01-000 OR CLIP 80734-01-000 EVERY 600MM. USE SCREW G67-10-12B UNLESS OTHERWISE SPECIFIED.

- 42J TV-24" COLOR, STEREO W/REMOTE
- 40N GEN-4.0KW-ONANGAS-MICROQUIET
- 1JR TV-13" W/DVD-12V
- 1D5 ENTERTAINMENT CENTR/EXT W/CD
- 39A EXT RECEPTACLE DPLX 120VAC
- 12D ELECTRICAL SYSTEM 30 AMP
- 265 CODES/STANDARDS-CSA/CMVSS
- 1B1 CODES/STANDARDS USA

FOR ELECTRICAL TORQUE SPECIFICATIONS SEE DWG NO. 128783-01-000

FOR ELECTRICAL CALLOUTS SEE DWG NO. 121339-01-000

|                               |         |         |  |
|-------------------------------|---------|---------|--|
| FIRST USED                    |         | 06 332G |  |
| DO NOT SCALE DRAWING          |         |         |  |
| TITLE: WIRING INST-BODY, 110V |         |         |  |
| SHEET 2                       | PART NO | 153590  |  |