



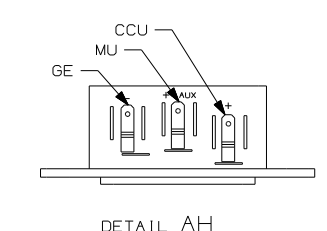
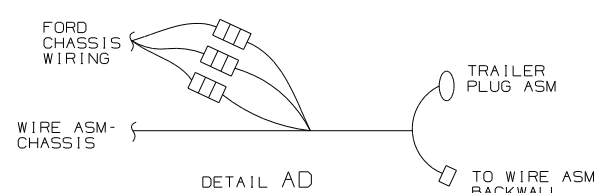
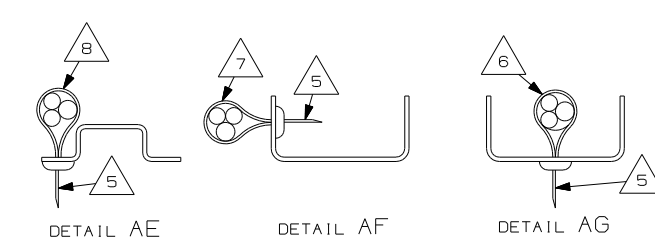
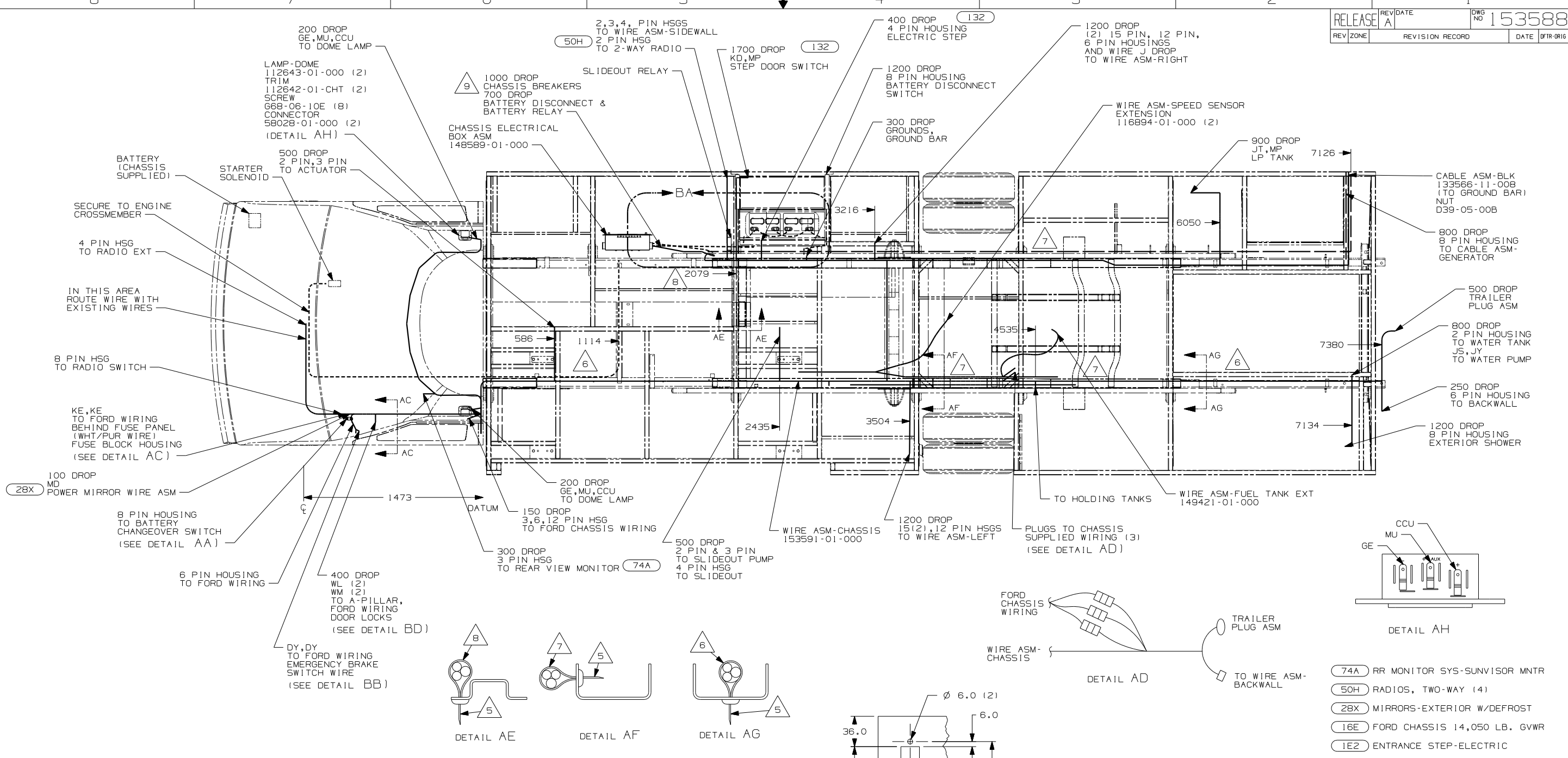
DANGER

Danger of electrical shock, burns or death. Always remove all power sources before attempting any repair, service or diagnostic work. Power can be present from shore power, generator, inverter or battery. All power sources must be disabled and secured before performing any service.



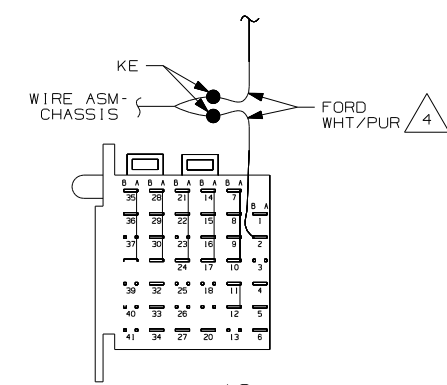
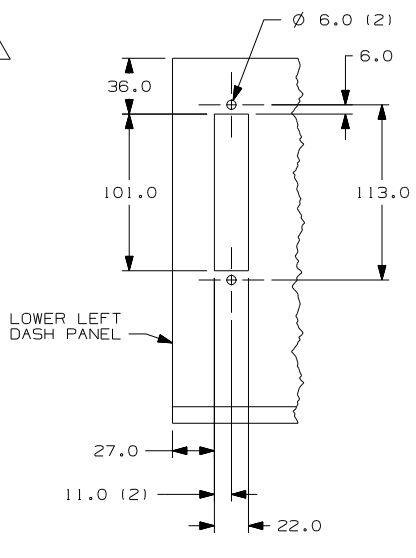
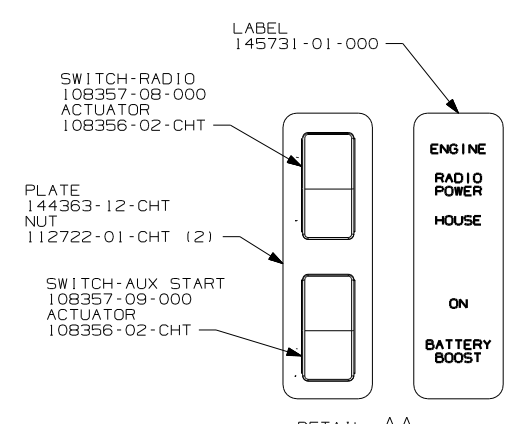
CAUTION

If you lack the skills, tools or equipment to perform diagnostic or repair work leave such work to an authorized Winnebago Industries dealer or other qualified shop.



- (74A) RR MONITOR SYS-SUNVISOR MNTR
- (50H) RADIOS, TWO-WAY (4)
- (28X) MIRRORS-EXTERIOR W/DEFROST
- (16E) FORD CHASSIS 14,050 LB. GVWR
- (1E2) ENTRANCE STEP-ELECTRIC

- 9 SEE DRAWING I48589-01-000 FOR ADDITIONAL INFORMATION.
 - 8 WIRES TO BE TIED TO CROSS MEMBER USING EXISTING HOLES.
 - 7 WIRES TO BE TIED ON TOP OF RAIL USING EXISTING HOLES.
 - 6 WIRES TO BE INSIDE RAIL USING EXISTING HOLES.
 - 5 CUT OFF EXCESS END OF WIRE TIE.
 - 4 CUT WIRE AND RECONNECT AS SHOWN.
3. USE WIRE TIE 8343-04-000 AND I16673-01-000 APPROXIMATELY 600MM ON CENTER UNLESS OTHERWISE SPECIFIED.
 2. SECURE CONDUIT I41953-01-000 OVER ALL WIRE IN CONTACT WITH SHARP EDGES.
 1. LEGEND: _____ FORD WIRING _____ WINNEBAGO WIRING _____ CABLE.



WINNEBAGO COPYRIGHT 2004 WINNEBAGO INDUSTRIES, INC.

| | |
|------|-----------------------------------|
| DFTR | ORIG. DATE |
| CHKR | ALL DIMENSIONS ARE IN MILLIMETERS |
| P.E. | FIRST USED |
| M.E. | 06 332G |
| DSNR | |

UNSPECIFIED TOLERANCES ARE: MATERIAL:

WHOLE DIM (X) :
 ONE-PLACE (X.X) :
 TWO-PLACE (X.XX) :
 ANGLE :

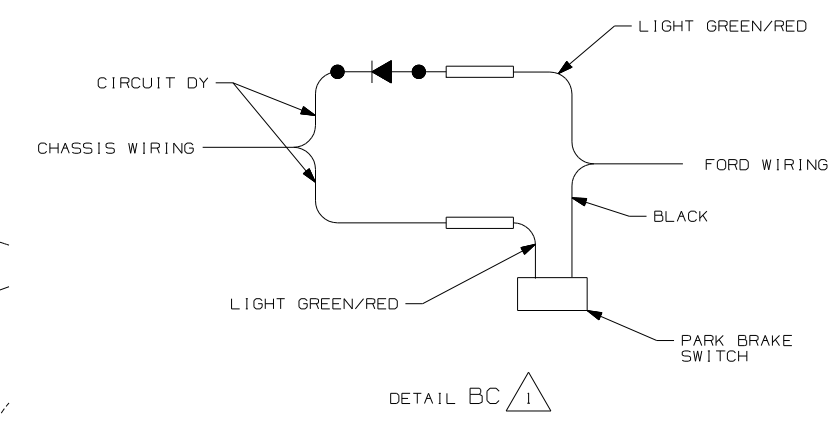
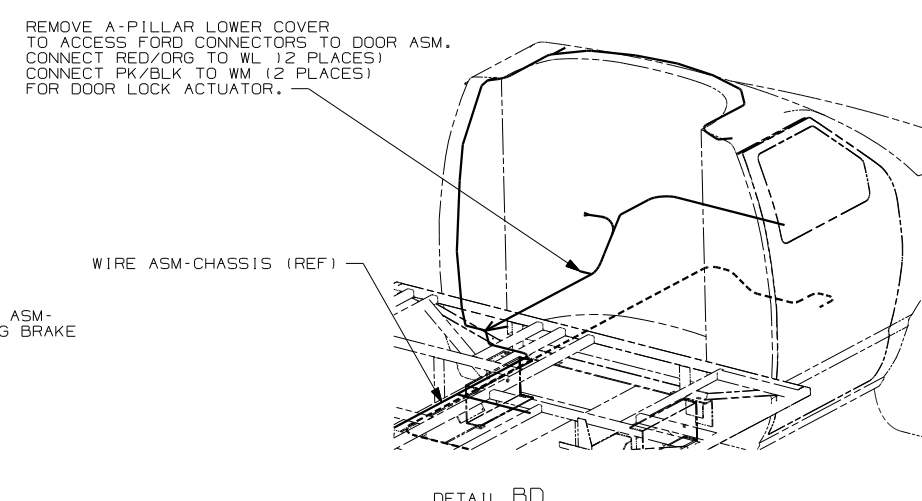
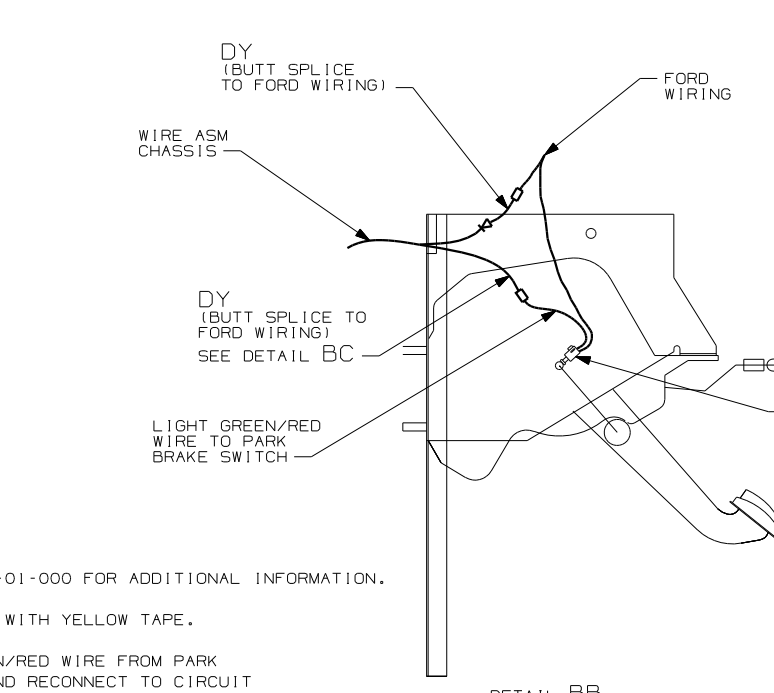
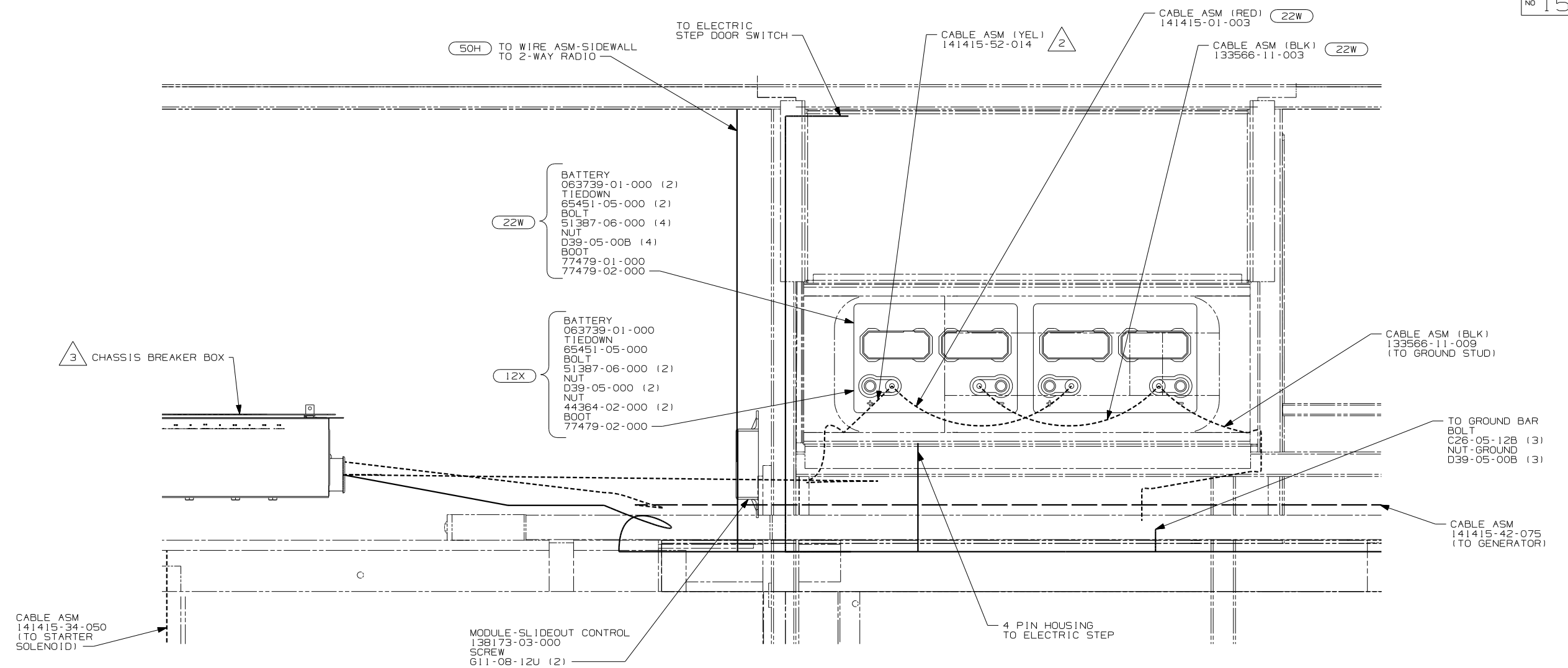
THIRD ANGLE PROJECTION

DO NOT SCALE DRAWING

TITLE: WIRING INSTL-CHASSIS

SHEET 1 OF 2 PART NO 153588

REF: 1 9/28/2005



- NOTES:
- 3 SEE DWG 148589-01-000 FOR ADDITIONAL INFORMATION.
 - 2 LEAD IS MARKED WITH YELLOW TAPE.
 - 1 CUT LIGHT GREEN/RED WIRE FROM PARK BRAKE SWITCH AND RECONNECT TO CIRCUIT DY OF CHASSIS ASM AS SHOWN.

FOR ELECTRICAL TORQUE SPECIFICATIONS SEE DWG NO. 128783-01-000

FOR ELECTRICAL CALLOUTS SEE DWG NO. 121339-01-000

| | |
|----------------------|----------------------|
| FIRST USED | 06 332G |
| DO NOT SCALE DRAWING | |
| TITLE: | WIRING INSTL-CHASSIS |
| SHEET 2 | PART NO 153588 |