



**DANGER**

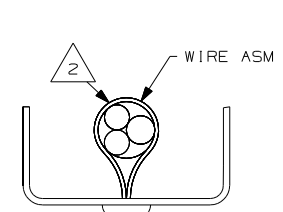
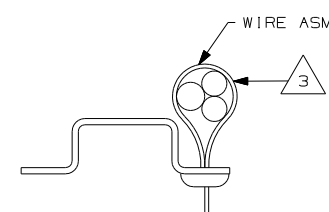
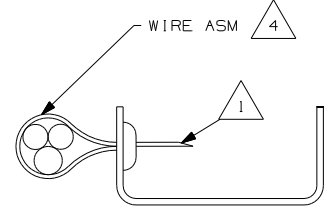
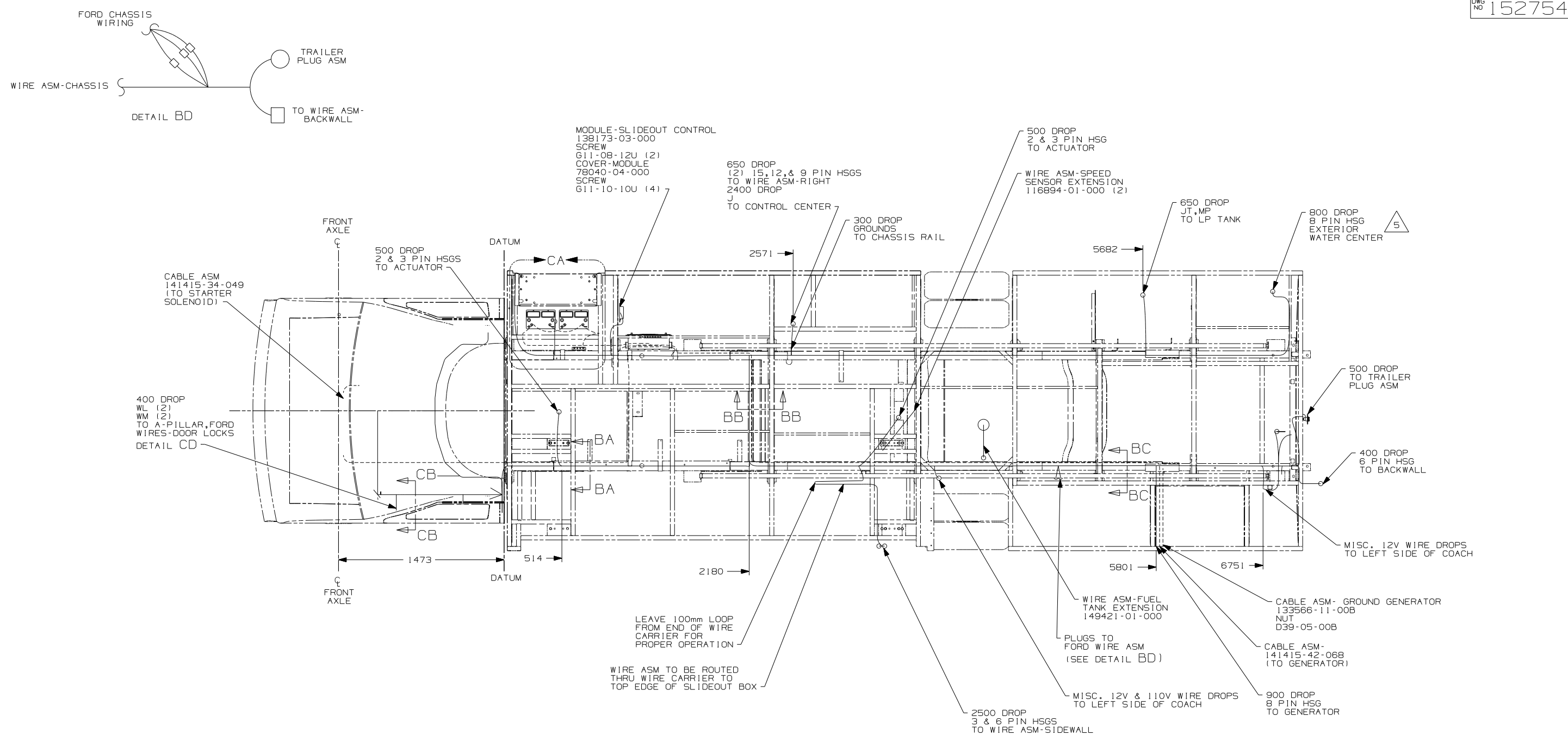
**Danger of electrical shock, burns or death.** Always remove all power sources before attempting any repair, service or diagnostic work. Power can be present from shore power, generator, inverter or battery. All power sources must be disabled and secured before performing any service.



**CAUTION**

If you lack the skills, tools or equipment to perform diagnostic or repair work leave such work to an authorized Winnebago Industries dealer or other qualified shop.





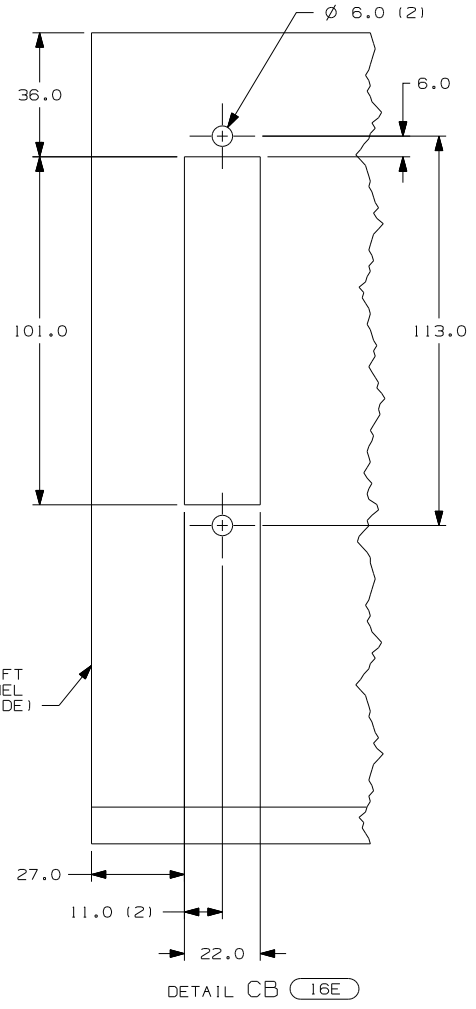
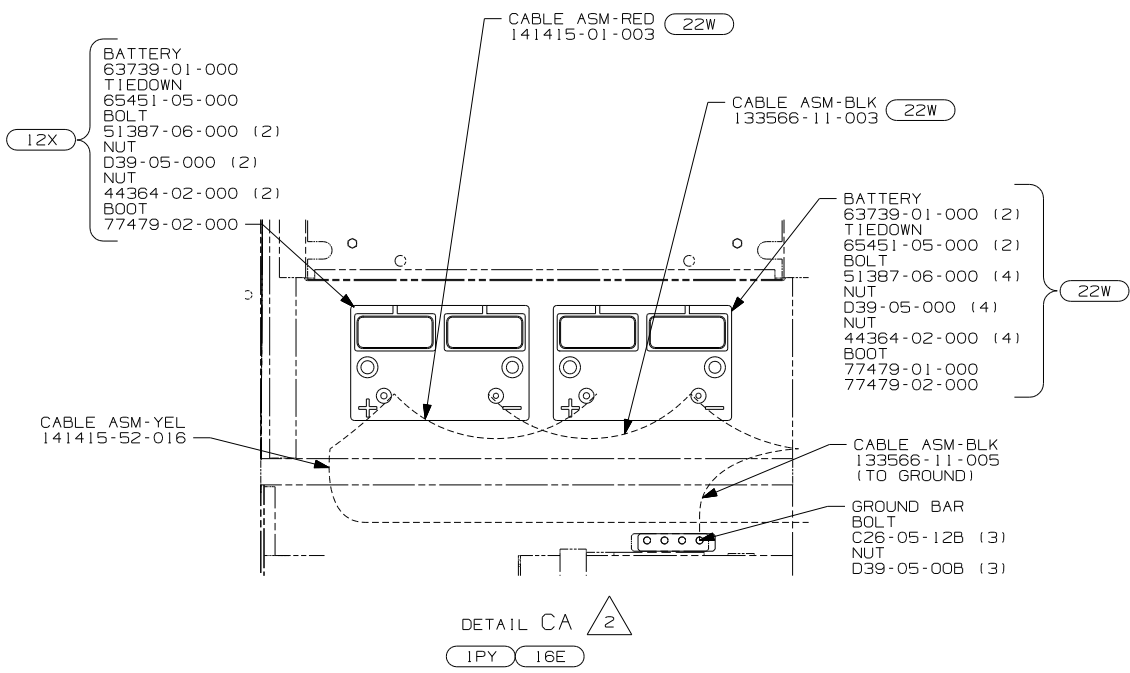
- NOTES:**
- 5 SECURE THE DROP BACK TO MAIN WIRE ASM TRUNK WHEN NOT USED.
  - 4 WIRES TO BE TIED TO CROSS MEMBER USING EXISTING HOLES.
  - 3 WIRES TO BE TIED TO TOP OF RAIL USING EXISTING HOLES.
  - 2 WIRES TO BE TIED TO INSIDE OF RAIL USING EXISTING HOLES.
  - 1 CUT OFF EXCESS END OF WIRE TIE.

- 265 CODES/STANDARDS-CSA/CMVSS
- 16E FORD CHASSIS 14,050 LB.GVWR
- 1B1 CODES/STANDARDS USA

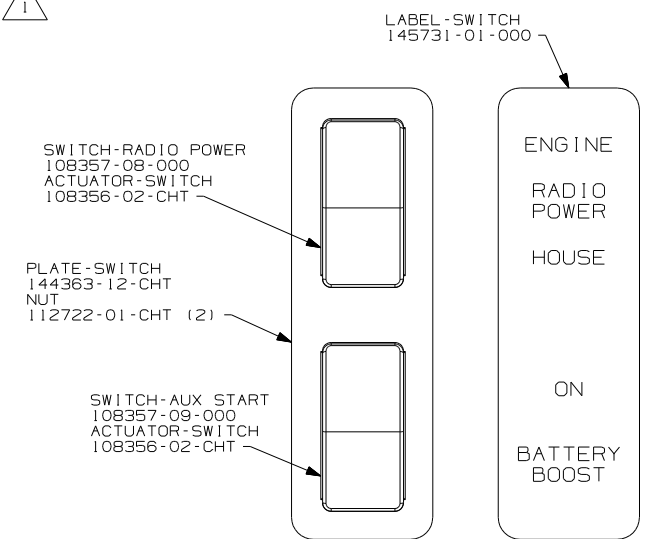
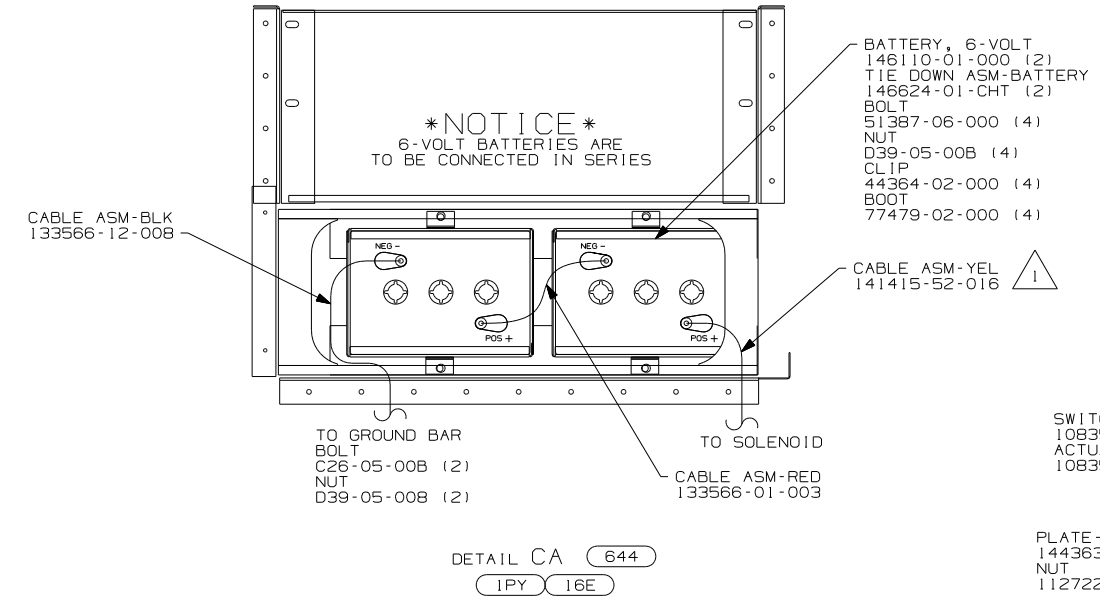
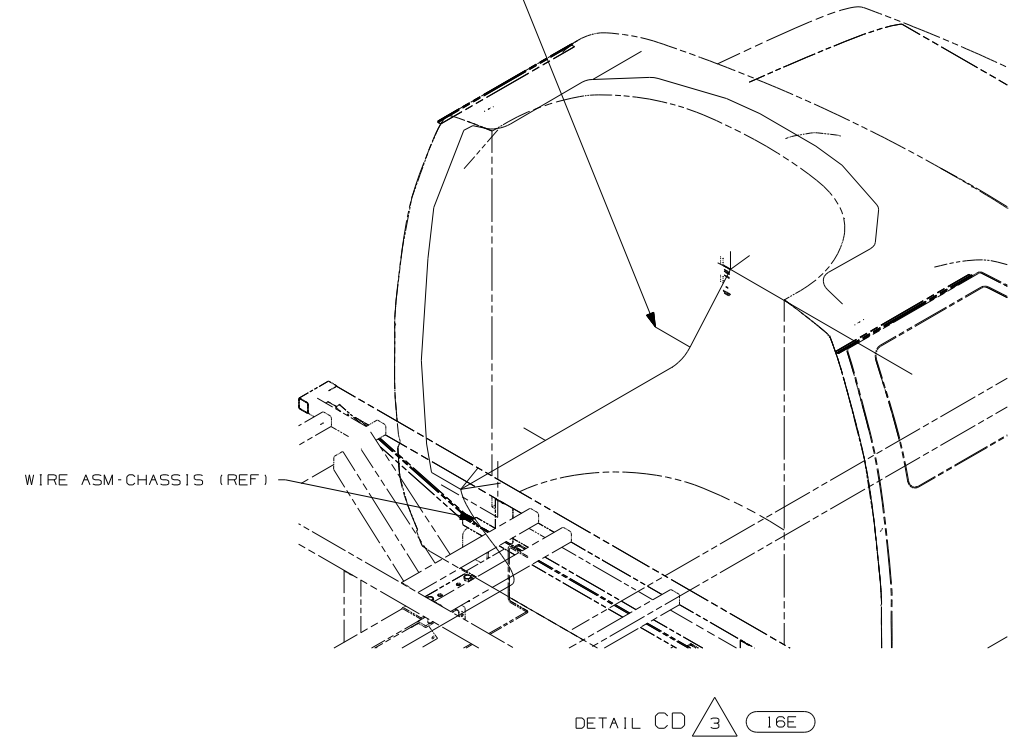
FIRST USED	06 331C/T
TITLE	DO NOT SCALE DRAWING
TITLE	WIRING INSTL-CHASSIS
SHEET 2	PART NO 152754 REV

FOR ELECTRICAL TORQUE SPECIFICATIONS SEE DWG NO. 128783-01-000

FOR ELECTRICAL CALLOUTS SEE DWG NO. 121339-01-000



REMOVE A-PILLAR LOWER COVER TO ACCESS FORD CONNECTORS TO DOOR ASM.  
CONNECT RED/ORG TO WL (2 PLACES)  
CONNECT PK/BLK TO WM (2 PLACES)  
FOR POWER DOOR LOCK ACTUATOR



- NOTES:
- 3 WITH OPTION (644), DO NOT CONNECT POWER DOOR LOCK WIRES. TIE WL & WM BACK TO MAIN HARNESS.
  - 2 WITHOUT (644).
  - 1 LEAD IS MARKED WITH YELLOW TAPE.

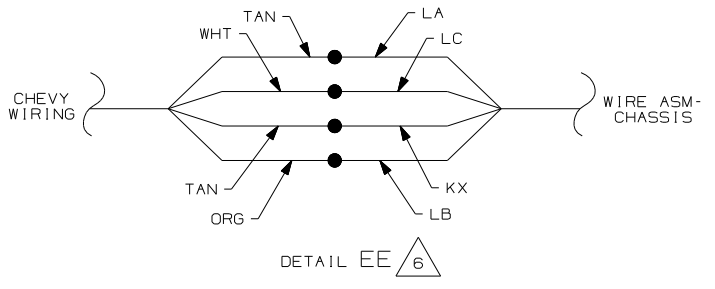
- (644) GREAT ALASKAN RENTAL PACKAGE
- (22W) BATTERY-SECOND
- (16E) FORD CHASSIS 14,050 LB.GVWR
- (12X) BATTERY-ONE
- (IPY) CHEVY CHASSIS 14,050 LB GVWR
- (265) CODES/STANDARDS-CSA/CMVSS
- (1B1) CODES/STANDARDS USA

FOR ELECTRICAL TORQUE SPECIFICATIONS SEE DWG NO. 128783-01-000

(X-X) FOR ELECTRICAL CALLOUTS SEE DWG NO. 121339-01-000

FIRST USED	06 331C/T
TITLE	DO NOT SCALE DRAWING
WIRING INSTL-CHASSIS	
SHEET 3	PART NO 152754 REV





DETAIL EE 6

MODULE-SLIDEOUT CONTROL  
 138173-03-000  
 SCREW  
 611-08-12U (2)  
 COVER-MODULE  
 78040-04-000  
 SCREW  
 611-10-10U (4)

650 DROP  
 (2) 15, 12, & 9 PIN HSGS  
 TO WIRE ASM-RIGHT  
 2400 DROP  
 J  
 TO CONTROL CENTER

500 DROP  
 2 & 3 PIN HSG  
 TO ACTUATOR

650 DROP  
 JT, MP  
 TO LP TANK

800 DROP  
 8 PIN HSG  
 EXTERIOR  
 WATER CENTER

CABLE ASM  
 141415-34-032  
 (TO STARTER  
 SOLENOID)

500 DROP  
 2 & 3 PIN HSGS  
 TO ACTUATOR

300 DROP  
 GROUNDS  
 TO CHASSIS RAIL

500 DROP  
 TO TRAILER  
 PLUG ASM

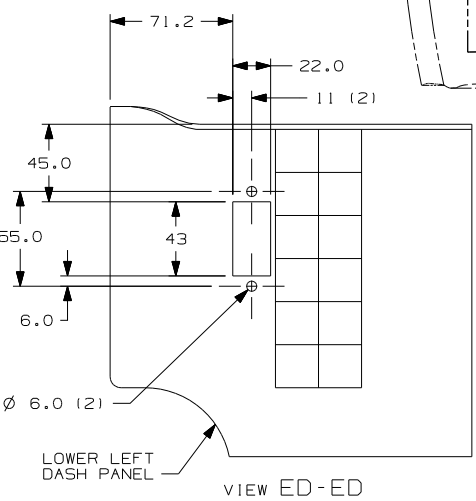
400 DROP  
 6 PIN HSG  
 TO BACKWALL

MISC. 12V WIRE DROPS  
 TO LEFT SIDE OF COACH

CABLE ASM- GROUND GENERATOR  
 133566-11-008  
 NUT  
 D39-05-00B

CABLE ASM-  
 141415-42-068  
 (TO GENERATOR)

900 DROP  
 8 PIN HSG  
 TO GENERATOR



VIEW ED-ED

FRONT AXLE

FRONT AXLE

DATUM

DATUM

SPEAKER WIRE  
 CONNECTIONS  
 DETAIL EE

LEAVE 100mm LOOP  
 FROM END OF WIRE  
 CARRIER FOR  
 PROPER OPERATION

WIRE ASM TO BE ROUTED  
 THRU WIRE CARRIER TO  
 TOP EDGE OF SLIDEOUT BOX

WIRE ASM-FUEL  
 TANK EXTENSION  
 155949-02-000

PLUGS TO  
 CHEVY WIRE ASM

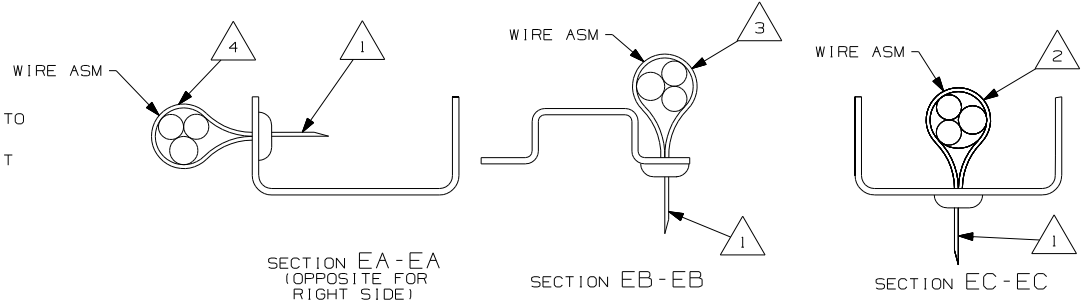
MISC. 12V & 110V WIRE DROPS  
 TO LEFT SIDE OF COACH

2500 DROP  
 3 & 6 PIN HSGS  
 TO WIRE ASM-SLIDEOUT

6 BOTH POSITIVE WIRES ARE TAN. TO TEST, TURN THE RADIO FADE ALL THE WAY TO THE LEFT. CONNECT THE NEGATIVE TERMINAL OF A TEST SPEAKER TO THE WHITE WIRE. THEN ALTERNATE THE TWO TAN WIRES TO THE POSITIVE TERMINAL. WHICH EVER IS LOUDER IS THE ONE THAT CONNECTS TO CIRCUIT LA. THE OTHER TAN WIRE CONNECTS TO CIRCUIT KX.

- 5 SECURE THE DROP BACK TO MAIN WIRE ASM TRUNK WHEN NOT USED.
- 4 WIRES TO BE TIED TO CROSS MEMBER USING EXISTING HOLES.
- 3 WIRES TO BE TIED TO TOP OF RAIL USING EXISTING HOLES.
- 2 WIRES TO BE TIED TO INSIDE OF RAIL USING EXISTING HOLES.
- 1 CUT OFF EXCESS END OF WIRE TIE.

NOTES:



SECTION EA-EA (OPPOSITE FOR RIGHT SIDE)

SECTION EB-EB

SECTION EC-EC

- 265 CODES/STANDARDS-CSA/CMVSS
- 1PY CHEVY CHASSIS 14,050 LB GVWR
- 1B1 CODES/STANDARDS USA

FIRST USED		06 331C/T	
DO NOT SCALE DRAWING			
TITLE: WIRING INSTL-CHASSIS			
SHEET 5	PART NO	152754	REV