



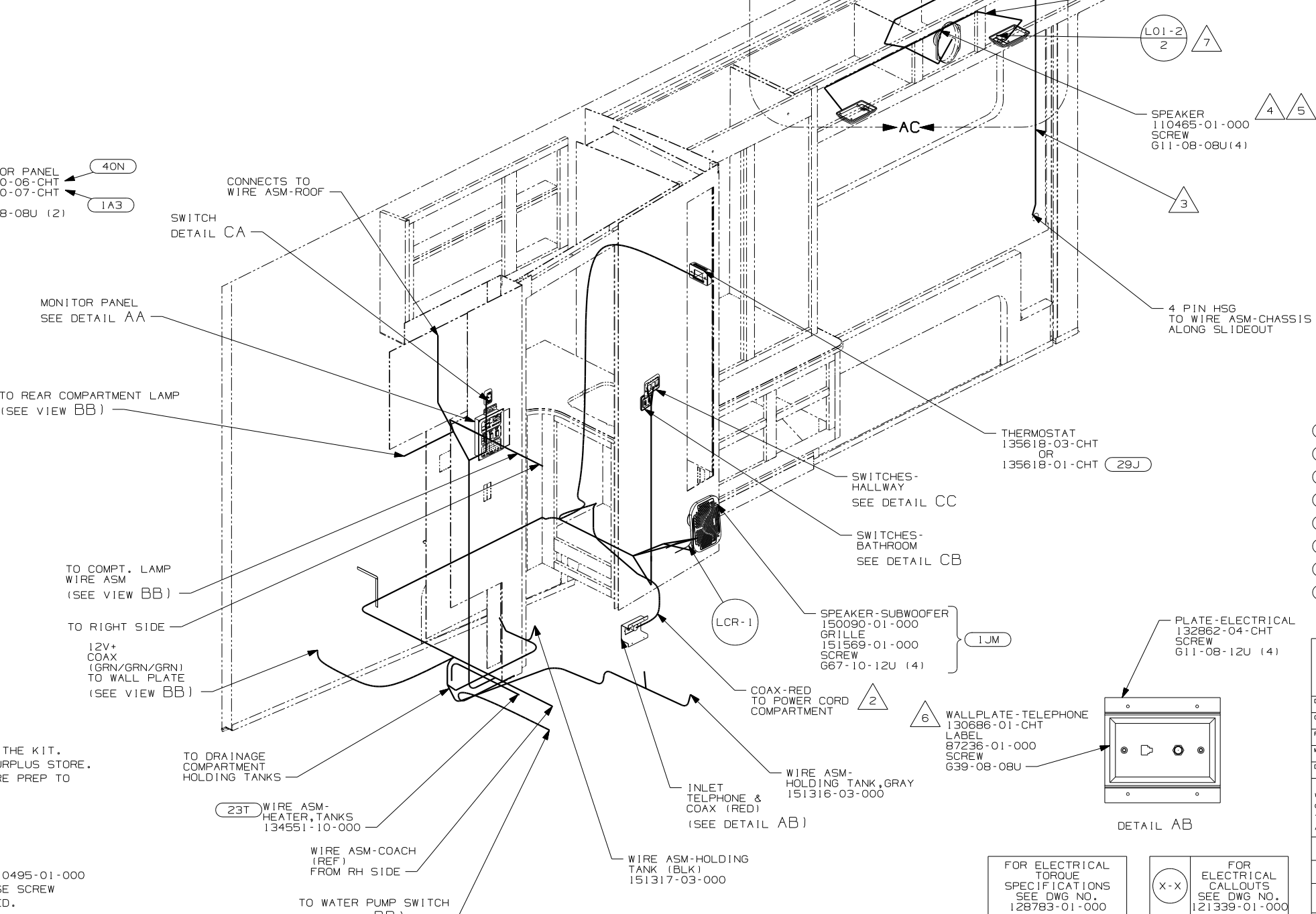
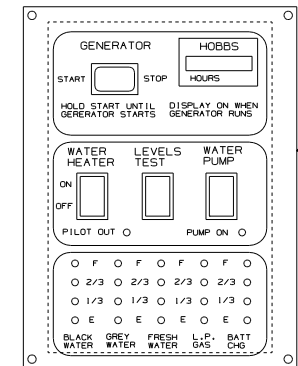
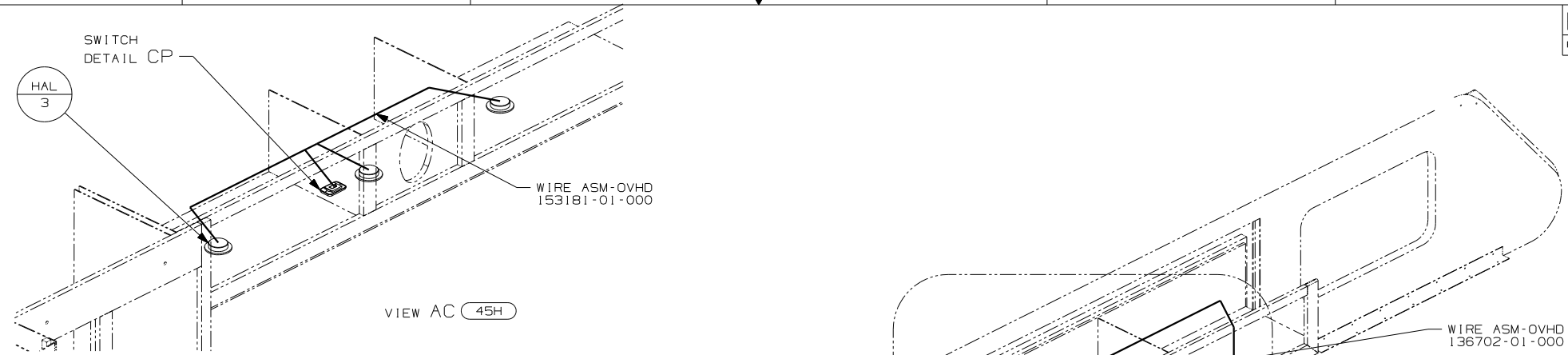
DANGER

Danger of electrical shock, burns or death. Always remove all power sources before attempting any repair, service or diagnostic work. Power can be present from shore power, generator, inverter or battery. All power sources must be disabled and secured before performing any service.



CAUTION

If you lack the skills, tools or equipment to perform diagnostic or repair work leave such work to an authorized Winnebago Industries dealer or other qualified shop.

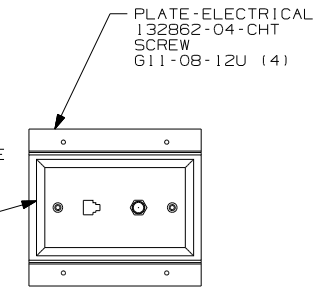


- (45H) DELUXE FEATURE PACKAGE
- (40N) GEN-4.0KW-ONANGAS-MICROQUIET
- (29J) AC HEAT PUMP-1
- (23T) DRAINAGE SYSTEM-HEATED
- (265) CODES/STANDARDS-CSA/CMVSS
- (1JM) HOME THEATER SOUND SYSTEM
- (1B1) CODES/STANDARDS USA
- (1A3) GENERATOR WITHOUT

- 7 NOT USED WITH (45H)
- 6 CONNECT TELEPHONE WIRES TO MATCHING COLORS ON PLATE-TELEPHONE.
- 5 NOT USED WITH (1JM)
- 4 USE ONE OF THE SPEAKERS PROVIDED IN THE KIT. SEND THE SCREWS IN THE KIT TO THE SURPLUS STORE. SEND THE KIT WIRE ASM-PIGTAIL TO WIRE PREP TO BE INCORPORATED INTO A WIRE ASM.
- 3 WIRE INTEGRAL TO SIDEWALL.
- 2 WIRE ROUTE PASSES THRU FLOOR.

1. ALL WIRES TO BE SECURED WITH CLAMP 10495-01-000 OR CLIP 80734-01-000 EVERY 600MM. USE SCREW 667-10-12B UNLESS OTHERWISE SPECIFIED.

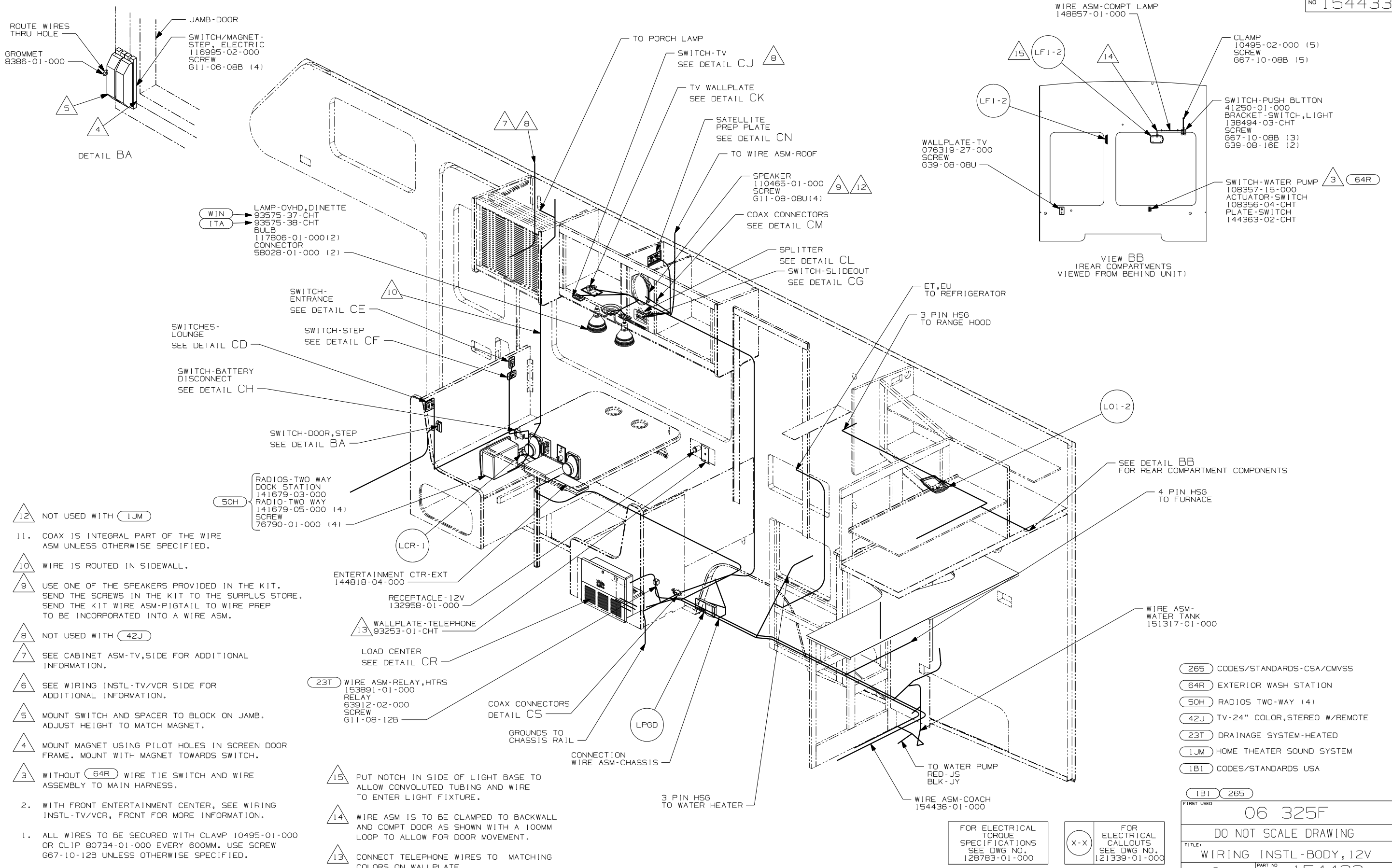
NOTES:



FOR ELECTRICAL TORQUE SPECIFICATIONS SEE DWG NO. 128783-01-000

FOR ELECTRICAL CALLOUTS SEE DWG NO. 121339-01-000

WINNEBAGO		COPYRIGHT 2004 WINNEBAGO INDUSTRIES, INC.	
DFT#	ORIG. DATE	ALL DIMENSIONS ARE IN MILLIMETERS	
CHKR			
P.E.			
M.E.	FIRST USED	06 325F	
DSNR			
UNSPECIFIED TOLERANCES ARE:		MATERIAL:	
WHOLE DIM (X)	:		
ONE-PLACE (X.X)	:		
TWO-PLACE (X.XX)	:		
ANGLE	:		
THIRD ANGLE PROJECTION			
DO NOT SCALE DRAWING			
TITLE: WIRING INSTL-BODY, 12V			
SHEET 1 of 4	PART NO	154433	
REF:		1 11/12005	



- △12 NOT USED WITH 1JM
 - 11. COAX IS INTEGRAL PART OF THE WIRE ASM UNLESS OTHERWISE SPECIFIED.
 - △10 WIRE IS ROUTED IN SIDEWALL.
 - △9 USE ONE OF THE SPEAKERS PROVIDED IN THE KIT. SEND THE SCREWS IN THE KIT TO THE SURPLUS STORE. SEND THE KIT WIRE ASM-PIGTAIL TO WIRE PREP TO BE INCORPORATED INTO A WIRE ASM.
 - △8 NOT USED WITH 42J
 - △7 SEE CABINET ASM-TV, SIDE FOR ADDITIONAL INFORMATION.
 - △6 SEE WIRING INSTL-TV/VCR SIDE FOR ADDITIONAL INFORMATION.
 - △5 MOUNT SWITCH AND SPACER TO BLOCK ON JAMB. ADJUST HEIGHT TO MATCH MAGNET.
 - △4 MOUNT MAGNET USING PILOT HOLES IN SCREEN DOOR FRAME. MOUNT WITH MAGNET TOWARDS SWITCH.
 - △3 WITHOUT 64R WIRE TIE SWITCH AND WIRE ASSEMBLY TO MAIN HARNESS.
- NOTES:
2. WITH FRONT ENTERTAINMENT CENTER, SEE WIRING INSTL-TV/VCR, FRONT FOR MORE INFORMATION.
 1. ALL WIRES TO BE SECURED WITH CLAMP 10495-01-000 OR CLIP 80734-01-000 EVERY 600MM. USE SCREW 667-10-12B UNLESS OTHERWISE SPECIFIED.

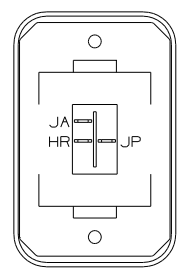
- △15 PUT NOTCH IN SIDE OF LIGHT BASE TO ALLOW CONVOLUTED TUBING AND WIRE TO ENTER LIGHT FIXTURE.
- △14 WIRE ASM IS TO BE CLAMPED TO BACKWALL AND COMPT DOOR AS SHOWN WITH A 100MM LOOP TO ALLOW FOR DOOR MOVEMENT.
- △13 CONNECT TELEPHONE WIRES TO MATCHING COLORS ON WALLPLATE.

- 265 CODES/STANDARDS-CSA/CMVSS
- 64R EXTERIOR WASH STATION
- 50H RADIOS TWO-WAY (4)
- 42J TV-24" COLOR, STEREO W/REMOTE
- 23T DRAINAGE SYSTEM-HEATED
- 1JM HOME THEATER SOUND SYSTEM
- 1B1 CODES/STANDARDS USA

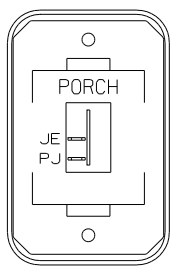
FOR ELECTRICAL TORQUE SPECIFICATIONS SEE DWG NO. 128783-01-000

FOR ELECTRICAL CALLOUTS SEE DWG NO. 121339-01-000

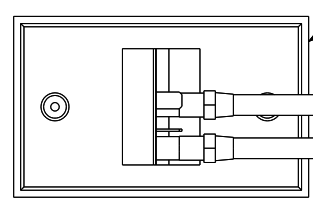
FIRST USED	06 325F
DO NOT SCALE DRAWING	
TITLE:	WIRING INSTL-BODY, 12V
SHEET 2	PART NO 154433



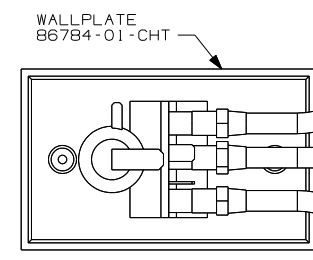
SWITCH-ROCKER
135740-06-CHT
SWITCH-BASE
135741-01-CHT
SWITCH-BEZEL
135742-01-CHT
SCREW
611-08-08U (2)



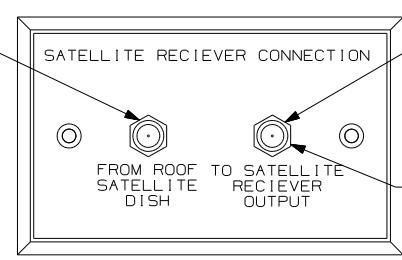
SWITCH-ROCKER
135740-01-CHT
SWITCH-BASE
135741-01-CHT
SWITCH-BEZEL
135742-09-CHT
SCREW
611-08-08U (2)



WALLPLATE
86784-03-CHT
SEE DETAIL CN
COAX-BLU TO FRONT VIDEO SWITCH
COAX-BLU FROM ROOF ASM

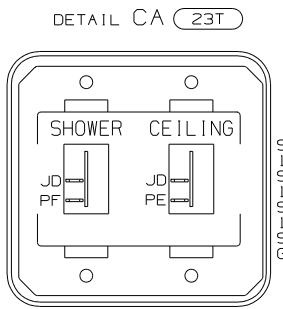


WALLPLATE
86784-01-CHT
COAX-ORG/ORG FROM SATELLITE PREP PLATE
COAX-BLU (ANTENNA)

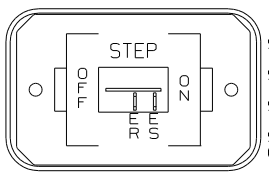


SATELLITE RECIEVER CONNECTION
COAX (RED) 6
PLATE-WALL
149557-05-CHT
SCREW
667-10-08U
COAX (RED/RED) 5
DETAIL CM

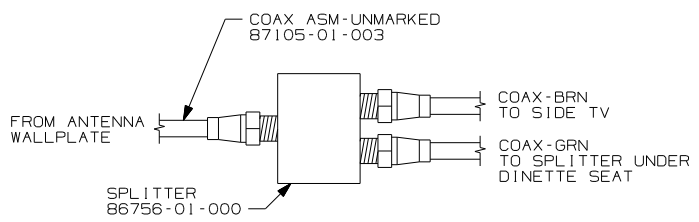
HOLDING TANK HEATER
TURN OFF When Not In Use
SEE OPERATORS MANUAL



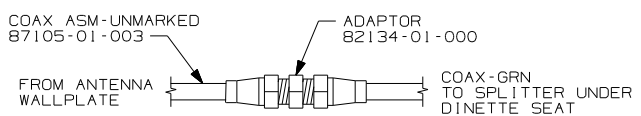
SWITCH-ROCKER
135740-01-CHT (2)
SWITCH-BASE
135741-02-CHT
SWITCH-BEZEL
135742-15-CHT
SCREW
611-08-08U (4)



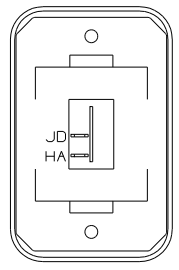
SWITCH-ROCKER
135740-01-CHT
SWITCH-BASE
135741-01-CHT
SWITCH-BEZEL
135742-11-CHT
SCREW
611-08-08U (2)



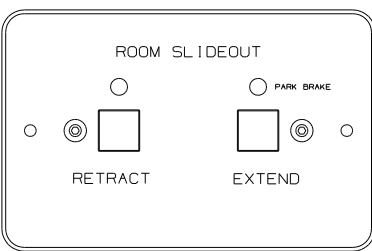
COAX_ASM-UNMARKED
87105-01-003
FROM ANTENNA WALLPLATE
SPLITTER
86756-01-000
COAX-BRN TO SIDE TV
COAX-GRN TO SPLITTER UNDER DINETTE SEAT



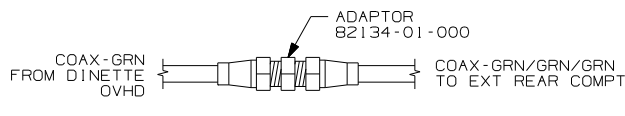
COAX_ASM-UNMARKED
87105-01-003
ADAPTOR
82134-01-000
FROM ANTENNA WALLPLATE
COAX-GRN TO SPLITTER UNDER DINETTE SEAT



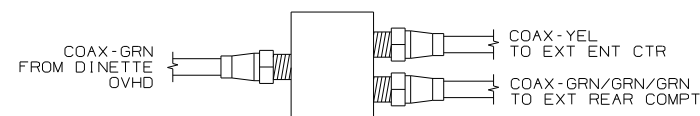
SWITCH-ROCKER
135740-01-CHT
SWITCH-BASE
135741-01-CHT
SWITCH-BEZEL
135742-01-CHT
SCREW
611-08-08U (2)



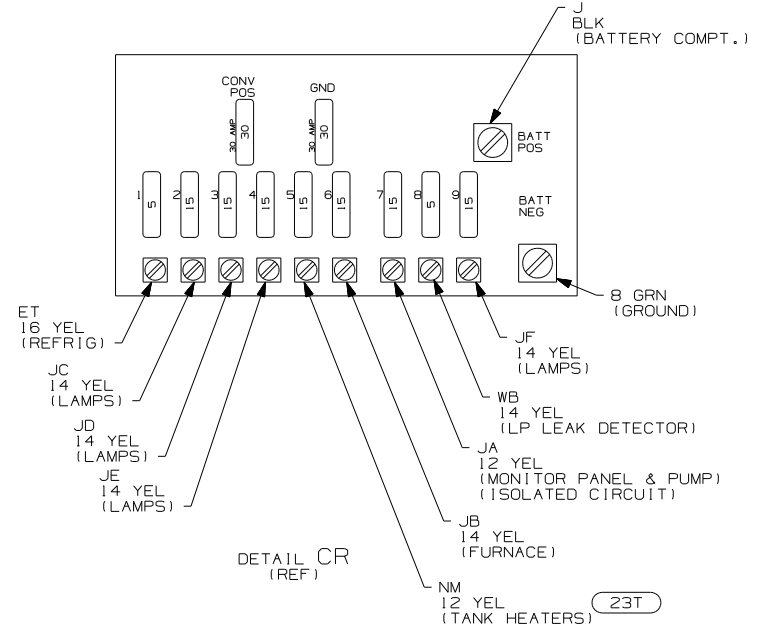
ROOM SLIDEOUT
RETRACT EXTEND
PARK BRAKE
SWITCH-ASM
SLIDEOUT
138173-04-000
LABEL
116549-01-000



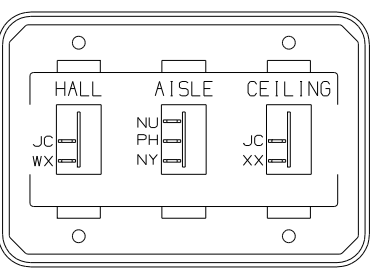
ADAPTOR
82134-01-000
COAX-GRN FROM DINETTE OVHD
COAX-GRN/GRN/GRN TO EXT REAR COMPT



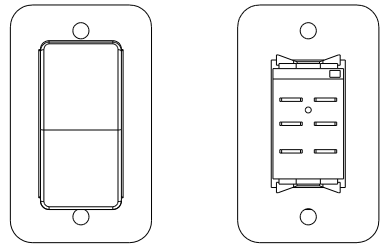
ADAPTOR
82134-01-000
COAX-GRN FROM DINETTE OVHD
SPLITTER
86756-01-000
COAX-YEL TO EXT ENT CTR
COAX-GRN/GRN/GRN TO EXT REAR COMPT



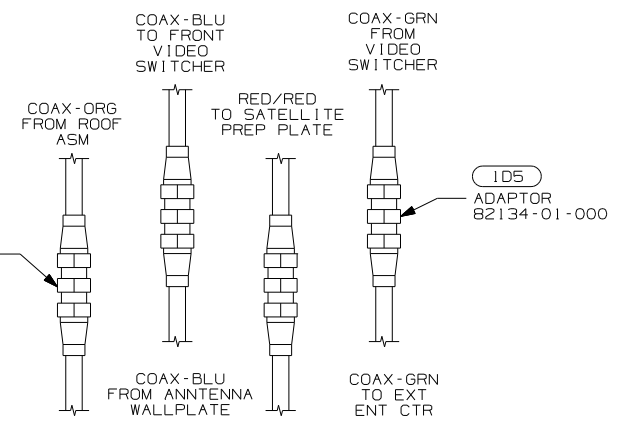
J BLK (BATTERY COMPT.)
CONV POS 30 AMP
GND 30 AMP
BATT POS
BATT NEG
8 GRN (GROUND)
ET 16 YEL (REFRIG)
JC 14 YEL (LAMPS)
JD 14 YEL (LAMPS)
JE 14 YEL (LAMPS)
JF 14 YEL (LAMPS)
JB 14 YEL (FURNACE)
NM 12 YEL (TANK HEATERS)
WB 14 YEL (LP LEAK DETECTOR)
JA 12 YEL (MONITOR PANEL & PUMP) (ISOLATED CIRCUIT)



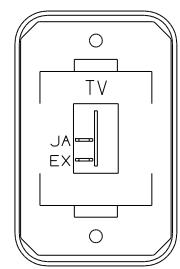
SWITCH-ROCKER
135740-01-CHT (2)
135740-02-CHT
SWITCH-BASE
135741-03-CHT
SWITCH-BEZEL
135742-25-CHT
SCREW
611-08-08U (4)



SWITCH-BATTERY, DISC
108357-06-000
ACTUATOR-SWITCH
108356-11-CHT
PLATE-SWITCH
98351-07-CHT
SCREW
611-06-10U (2)



ADAPTOR
82134-01-000 (3)
COAX-BLU TO FRONT VIDEO SWITCHER
COAX-GRN FROM VIDEO SWITCHER
COAX-BLU FROM ANTENNA WALLPLATE
COAX-GRN TO EXT ENT CTR
COAX-ORG FROM ROOF ASM
RED/RED TO SATELLITE PREP PLATE
COAX-ORG TO SATELLITE PREP PLATE
RED FROM POWER CORD COMPT



SWITCH-ROCKER
135740-01-CHT
SWITCH-BASE
135741-01-CHT
SWITCH-BEZEL
135742-45-CHT
SCREW
611-08-08U (2)

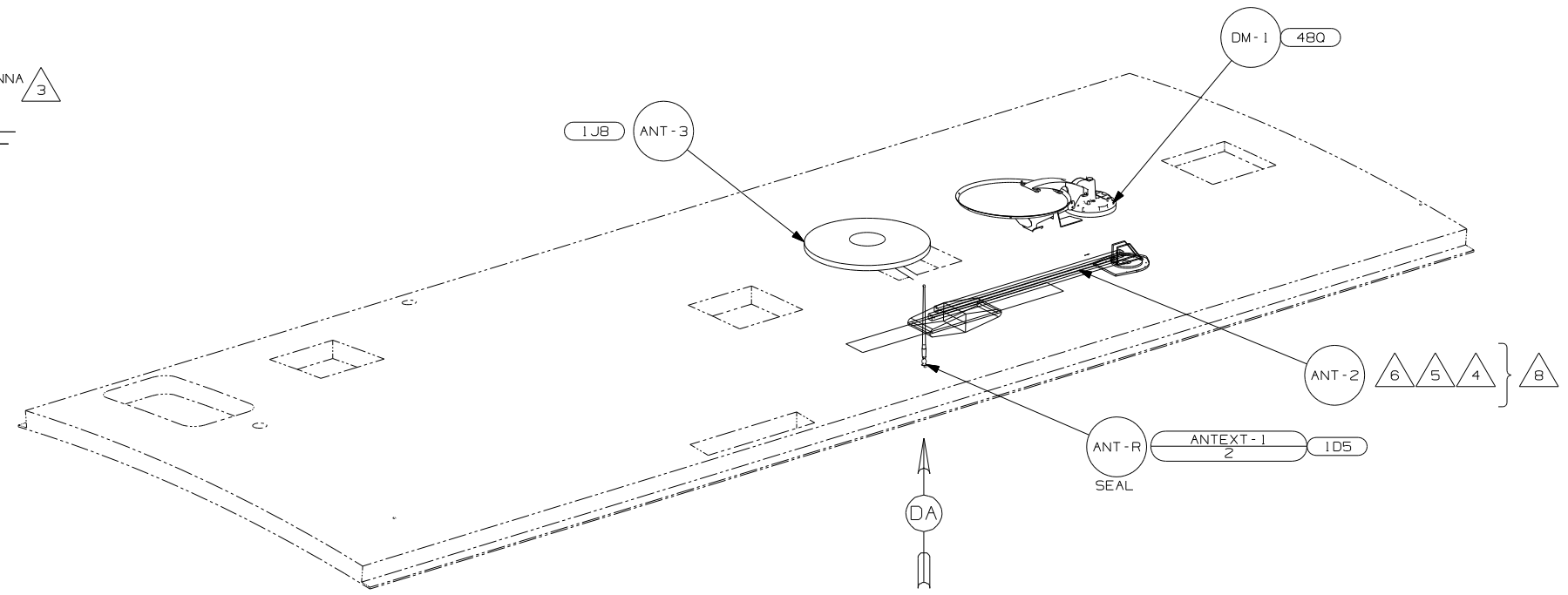
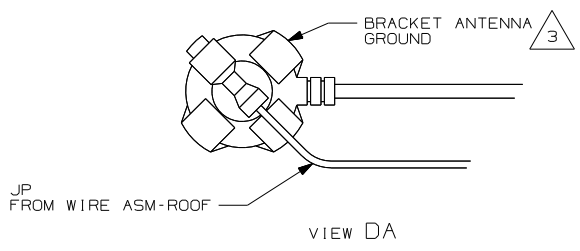
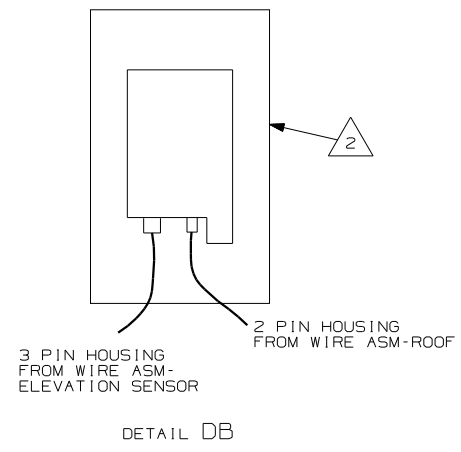
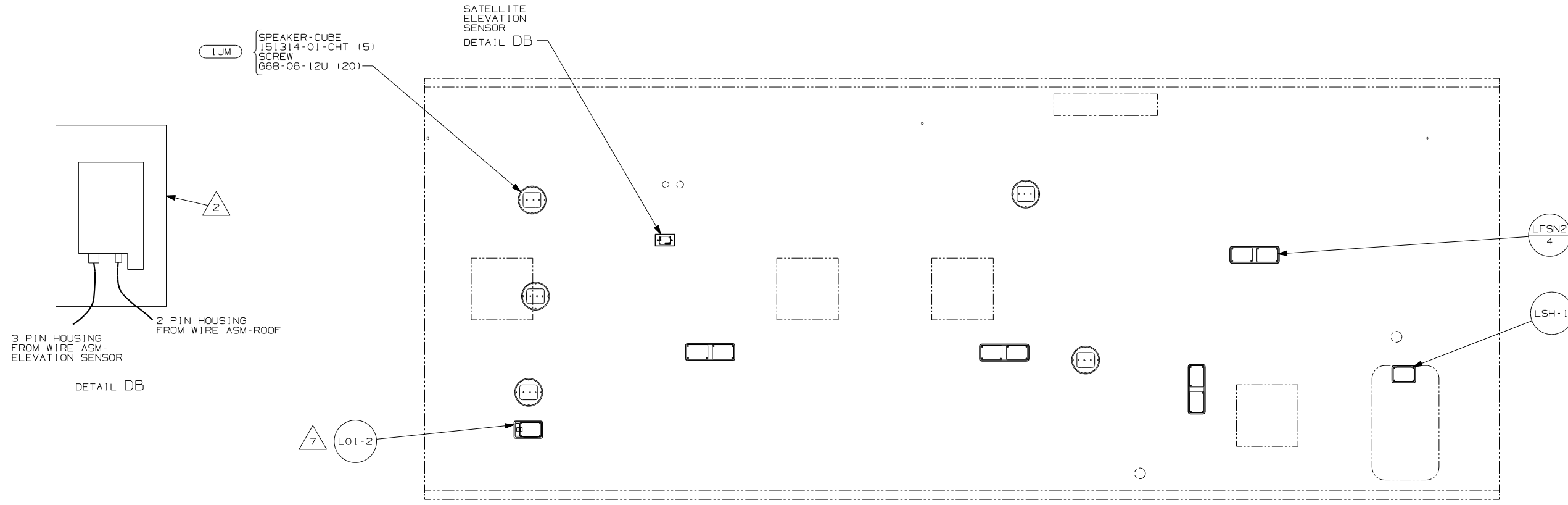
- NOTES:
- 6 CONNECT COAX TO FRONTSIDE OF WALLPLATE.
 - 5 CONNECT COAX TO BACKSIDE OF WALLPLATE.
 - 4 WITHOUT (ID5)
 - 3 SENSOR SUPPLIED WITH SATELLITE ASSEMBLY
 - 2 SEE WIRING INSTL-TV/VCR,FRONT FOR ADDITIONAL INFORMATION.
 - 1 NOT USED WITH (42J)

- (480) SATELLITE DISH & ELEV.SENSOR
- (42J) TV-24" COLOR,STEREO W/REMOTE
- (40N) GEN-4.0KW-ONANGAS-MICROQUIET
- (23T) DRAINAGE SYSTEM-HEATED
- (ID5) ENTERTAINMENT CENTR/EXT W/CD
- (1A3) GENERATOR WITHOUT
- (1E2) ENTRANCE STEP-ELEC.
- (1JR) TV-13" W/DVD-12V

FOR ELECTRICAL TORQUE SPECIFICATIONS SEE DWG NO. 128783-01-000

FOR ELECTRICAL CALLOUTS SEE DWG NO. 121339-01-000

FIRST USED	06 325F
DO NOT SCALE DRAWING	
TITLE:	WIRING INSTL-BODY,12V
SHEET 3	PART NO 154433



- △ 8 NOT USED WITH 1JB.
- △ 7 NOT USED WITH 42J.
- △ 6 ADD RUBBER BUMPER TO ROOF UNDER EACH END OF ANTENNA IN DOWN POSITION WHICH MAY COME INTO CONTACT WITH ROOF.
- △ 5 LOCATE CLAMP TO RETAIN CABLE BUT NOT TO RESTRICT ANTENNA TRAVEL.
- △ 4 SEE DRAWING 76319-01-000 FOR INSTALLATION OF TV ANTENNA.
- △ 3 WRAP BRACKET LEGS AROUND ANTENNA BASE.
- △ 2 SENSOR SUPPLIED WITH SATELLITE ASSEMBLY.

NOTES:
1. SEE ROOF ASSEMBLY FOR ADDITIONAL INFORMATION.

- 480 SATELLITE DISH & ELEV.SENSOR
- 42J TV-24" COLOR,STEREO W/REMOTE
- 265 CODES/STANDARDS-CSA/CMVSS
- 1JB TV ANTENNA-OMNIDIRECTIONAL
- 1JM HOME THEATER SOUND SYSTEM
- 1D5 ENTERTAINMENT CENTER/EXT W/CD
- 1B1 CODES/STANDARDS USA
- 1B1 265

FOR ELECTRICAL TORQUE SPECIFICATIONS SEE DWG NO. 128783-01-000

FOR ELECTRICAL CALLOUTS SEE DWG NO. 121339-01-000

FIRST USED	06 325F
DO NOT SCALE DRAWING	
TITLE:	WIRING INSTL-BODY,12V
SHEET 4	PART NO 154433